

Expertise

Protocol number: 46258377
Order No. / Reference: 26591600
Inspection date: 1 Jul 2026

Manufacturer: Ford

Model: Transit 310 L2H3 Lkw VA Trend

VIN: WF0EXXTTREL66720



Vehicle details

Manufacturer / Type / Model / Equipment

Ford Transit 310 L2H3 Lkw VA Trend

Vehicle Identification number WF0EXXTTREL66720

Mileage (Read) 121,633 km

First registration 9 Apr 2020

Number of holders 1

Power / Engine displacement 79 kw / 1,995 ccm

Fuel type / Cylinder Diesel / 4

Gearbox / Number of gears Manual / 6

Type of drive Front drive

Type of vehicle Van

Colour / colour code Silber-Metallic

Doors / Seats 4 / 3

Upholstery type Cloth

Colour of upholstery Black-Anthracite



Vehicle details

Maintenance booklet / proof	Non-existent	Next maintenance in	25,000 km
Key is / should be	4 / 4	FZG documents	ZB#2 (B) was available (copy), ZB#1 (S) was not available.
		Letter No.	FS966933
Previous damage / Accident	Detectable	Repainting	None detectable
Inspection conditions	sufficient	Lifting equipment / pit	yes
Test drive	Not performed	Engine function test	Performed
Manufacturer key number/ type code number	8566 / BSB 00253		
Emission standard	EURO6;WLTP;CI;PI/CI;N1 III, N2	fine dust sticker	
Permitted total weight	3,140 kg	Empty weight	

Tyres

Mounted tyres

#	Tyre size	Type of tyre	Manufacturer	Tread depth
1)	215/65 R15 102T	Summer tyres on Steel rim with wheel cover	Continental	4mm / 4mm
2)	215/65 R15 102T	Summer tyres on Steel rim with wheel cover	Continental	4mm / 4mm

Additional tyres

#	Tyre size	Type of tyre	Manufacturer	Tread depth
1)	215/65 R16 107R	Winter tyres on Steel	Continental	5mm / 5mm
2)	215/65 R16 107R	Winter tyres on Steel	Continental	5mm / 5mm

Replacement

Typ	Tyre size	Type of tyre	Manufacturer	Tread depth
E	215/65 R15 102T C	Summer tyres on Steel	Continental	6 mm

Legend: Tread depth information for the left tire is listed first, for the right tire it is listed second on the axle in the direction of travel.



Equipment

Standard equipment

- 1 battery
- Anti-lock braking system with electronic brake force distribution (EBD)
- roof, high
- Double-leaf rear door with 180° opening angle (without window)
- Electronic Stability Program (ESP) with Traction Control System (TCS)
- Generator, high-performance version
- Transmission: 6-speed transmission
- Interior lighting with delay circuit
- Cargo area lighting
- Steering column, adjustable in height and reach
- MyKey key system
- Emergency brake assist including emergency brake light
- Particulate filter: diesel particulate filter
- Wheels: Steel wheels 6.5 J x 15 with 215/65 R 15 tires
- Headlights with delayed shut-off
- Sliding door: Sliding door, right
- Rear mud flaps
- Side wall cladding up to the roof
- Seat belts
- Start-stop system
- Partition wall to the cargo area without window
- Immobiliser
- Central locking with remote control
- Front overhead storage compartment

Extra equipment

- 2 batteries
- Paint finish: Metallic
- Wheels/Tires: Spare wheel, steel wheel
- Seats: Seat Package 15 (Driver's seat, 4-way adjustable (forward/backward, backrest, seat cushion tilt, height) - Double passenger seat with storage compartment under individually foldable seat cushions - Height-adjustable headrests - Integrated (fold-out) tray in the double passenger seat - Heated driver's seat - Heated passenger seat - Interior armrest for driver - Manual lumbar support (driver's seat) - Seat upholstery: fabric)
- Parking heater package 1 (parking heater (fuel-operated auxiliary heater), programmable, incl. remote control)
- Long version rear step made of steel

- Driver's side airbag
- Exterior mirrors, electrically adjustable and heated
- On-board computer
- Headliner in driver's cab
- Tachometer
- Third brake light
- Front electric windows
- Ford Easy Fuel
- Cruise control including leather steering wheel
- Lockable glove compartment with lid
- Front air conditioning
- Cargo area floor: Vinyl floor covering "Easy Clean" including wheel arch lining
- Fog light
- Front and rear parking pilot system
- Wheels: Wheel trims
- Headlights with static cornering lights
- Sliding door entry light automatically illuminates when the door is opened
- Side protection strips
- Power steering
- Seats: Seat package 13
- Daytime running light
- Lashing eyes
- Heat-insulating glazing, lightly tinted
- Second key with remote control

- 3rd and 4th master keys (dealer accessories)
- Radio: Audio System 24: Ford audio system including Ford SYNC 3 with AppLink, DAB/DAB+, navigation system. (Radio (FM/AM) 8" touchscreen multifunction display (20.32 cm), 4 speakers, FordPass Connect Wi-Fi hotspot, integrated control panel and audio remote control on the steering wheel, Ford SYNC 3 with touchscreen (hands-free system with voice control, SMS readout/sending function, Bluetooth, Emergency Assistance...), AppLink (advanced voice control, privacy mode, Android Auto and Apple CarPlay support, capacitive touchscreen technology,...), dynamic navigation, lane guidance, road map for Western Europe)



Brief expert findings

Documents submitted	At the time of the inspection, the vehicle registration certificate Part 2 (title) was available, but the vehicle registration certificate Part 1 (document) was not. (Copy)
VIN comparison	The vehicle identification number (VIN) was read from the vehicle and its conformity with the submitted documents was confirmed by the undersigned during the inspection.
Inspection	The inspection conditions were sufficient for the assessment of the vehicle. Lifting equipment and/or a pit were available for examining the vehicle.
Test drive	No test drive/shunting maneuver was carried out during the inspection of the vehicle.
Engine function test	An engine test run was performed.

Value reducing factors

No.	Component group	Description
1	Misc.	Main inspection - No evidence - No deduction
2	Misc.	Inspection / maintenance - No evidence - No deduction
3	Boot lid / rear door	Rear door - left side - Paint defect - Smart repair
4	Door - rear right side	Door - Dent / paintcoat damage - Smart repair
5	Front bumper	Front bumper - Scratch(es) - Paint

Wear and tear

No.	Component group	Description
1	Rear of vehicle	Foot plate - Corrosion - No deduction
2	Bonnet	Bonnet - Stone chips - No deduction
3	Vehicle glazing	Windscreen - Stone chips - No deduction
4	Interior	Interior - Scratch(es) - No deduction

The vehicle shows signs of wear and tear commensurate with its age and use.

Missing parts

Description

Documents - Log book

Accident damages

No. Accident

1 Rear, Side right

Order/Scope of Order

An order was placed to prepare a sales report for the described vehicle. This report includes the following:

- Description of key vehicle information
- Documentation of equipment features
(*Delivery by third-party service providers*)
- Documentation of damage, defects, missing parts
- Documentation of prior damage, unrepaired prior damage, repainting
- A brief visual or functional inspection of the equipment details, if possible.
(*Functional testing of driver assistance systems is not included in the scope of services!*)
- a photographic documentation of the vehicle



Basis for the order

This product is based on the guidelines for vehicle returns and valuations of light commercial vehicles published by Alphabet Fleet Management GmbH. The expert makes the specific findings in each individual case objectively, within the framework of the prescribed standards, based on their own expertise.

The vehicle inspection takes place in a fully assembled, unassembled state.

Damage or defects that can only be detected during disassembly/diagnostic work or through further investigation remain within the realm of prognostic risk. An increased risk exists due to concealed defects caused by fraudulent misrepresentation and which were not identifiable by the expert.

Damage or defects resulting from normal use or wear and tear of the vehicle will be accepted in accordance with the applicable standard.

There was no explicit identification or monetary consideration of the expected features within the product.

Features which, in their nature and extent, slightly exceed normal use but do not constitute unacceptable damage, will be documented and indicated as signs of wear, if applicable.

Damage or defects that, according to the applicable standard, can no longer be attributed to normal use or wear and tear are listed under "Value Reducing Factors" in the product description.

Depending on the product specification, a monetary ID can be provided. If this takes place, the costs can be 100% d or pro rata depending on the vehicle's age and mileage.

Previous damages

Non-repaired previous damages were found at the vehicle. The necessary repair costs are listed in the expert report or if necessary, are listed in detail in a separately enclosed repair cost calculation.

Comments

Die beigefügte Reparaturkostenkalkulation wurde nach bestem Wissen und Gewissen unter eingeschränkten Besichtigungsbedingung im demontagefreien Zustand erstellt. Es können aufgrund verdeckter Beschädigung erhebliche Mehrkosten und somit Abweichung der für den Unfall ausgewiesenen Reparaturkosten nicht ausgeschlossen werden.



Figure 1: Diagonal front (left)



Figure 2: Diagonal front (right)



Figure 3: Diagonal rear (left)



Figure 4: Diagonal rear (right)



Figure 5: Interior - front



Figure 6: Interior - rear



Figure 7: Instrument cluster



Figure 8: Instrument panel



Figure 9: Interior 360° view



Figure 10: Cargo area



Figure 11: VIN



Figure 12: Mounted tyres



Figure 13: Documents



Figure 14: Documents



Figure 15: Additional tyres



Figure 16: Navigation

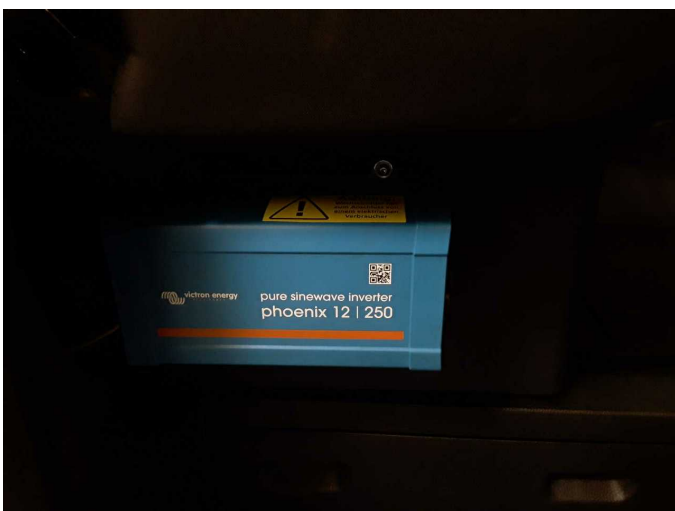


Figure 17: Misc.

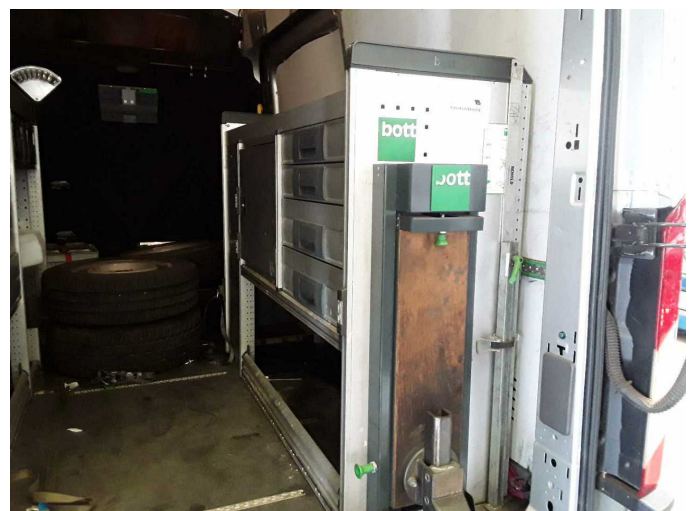


Figure 18: Misc.



Figure 19: Misc.



Figure 20: Misc.



Figure 21: Misc.



Figure 22: Misc.

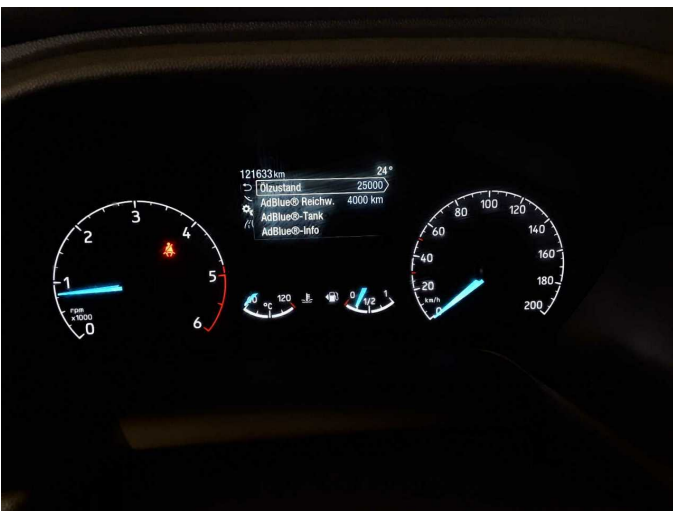


Figure 23: Misc.



Figure 24: Misc.



Figure 25: Misc.



Figure 26: Misc.



Figure 27: Misc.



Figure 28: Misc.



Figure 29: Misc.



Damage 3: Boot lid / rear door: Rear door - left side - Paint defect - Smart repair



Damage 3: Boot lid / rear door: Rear door - left side - Paint defect - Smart repair



Damage 3: Boot lid / rear door: Rear door - left side - Paint defect - Smart repair



Damage 3: Boot lid / rear door: Rear door - left side - Paint defect - Smart repair



Damage 4: Door - rear right side: Door - Dent / paintcoat damage - Smart repair



Damage 4: Door - rear right side: Door - Dent / paintcoat damage - Smart repair



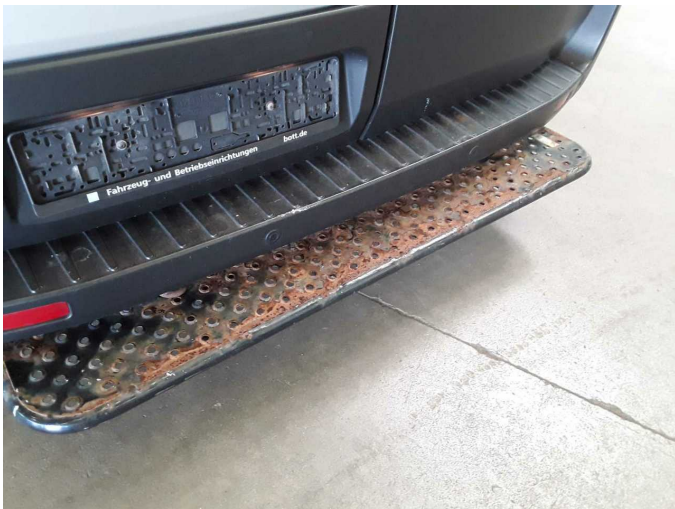
Damage 4: Door - rear right side: Door - Dent / paintcoat damage - Smart repair



Damage 5: Front bumper: Front bumper - Scratch(es) - Paint



Damage 5: Front bumper: Front bumper - Scratch(es) - Paint



Wear and tear 1: Rear of vehicle: Foot plate - Corrosion - No deduction



Wear and tear 2: Bonnet: Bonnet - Stone chips - No deduction



Wear and tear 2: Bonnet: Bonnet - Stone chips - No deduction



Accident 1: Rear, Side right



Accident 1: Rear, Side right



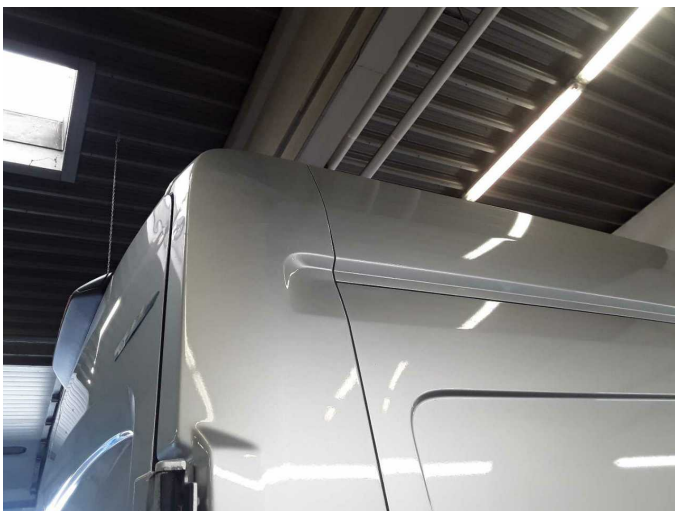
Accident 1: Rear, Side right



Accident 1: Rear, Side right



Accident 1: Rear, Side right



Accident 1: Rear, Side right