

## Expertise

Protocol number: 45798445  
Order No. / Reference: 26383284  
Inspection date: 3 Jun 2026

Manufacturer: Mercedes-Benz

Model: E 220 d T 9G-TRONIC Avantgarde

VIN: W1KZH0EB0PB169160



### Vehicle details

#### Manufacturer / Type / Model / Equipment

Mercedes-Benz E 220 d T 9G-TRONIC Avantgarde

<b>Vehicle Identification number</b>	W1KZH0EB0PB169160
<b>Mileage (Read)</b>	70,249 km
<b>First registration</b>	24 Jul 2023
<b>Number of holders</b>	1
<b>Next periodical technical inspection</b>	07/2026

<b>Power / Engine displacement</b>	147 kw / 1,993 ccm
<b>Fuel type / Cylinder</b>	Hybrid Diesel / E / 4
<b>Gearbox / Number of gears</b>	Automatic / 9
<b>Type of drive</b>	Rear drive
<b>Type of vehicle</b>	Station wagon

<b>Colour / colour code</b>	Selenitgrau metallic
<b>Doors / Seats</b>	5 / 5
<b>Upholstery type</b>	Leather
<b>Colour of upholstery</b>	Black

<b>Re-import</b>	no
<b>readiness to drive</b>	Roadworthy



## Vehicle details

<b>Maintenance booklet / proof</b>	digital evidence / incomplete	<b>Next maintenance in</b>	-29 Tag(e)
<b>Last service on / at</b>	05/2025 at 47,652 km		
<b>Key is / should be</b>	2 / 2	<b>FZG documents</b>	ZB#2 (B) was available (copy), ZB#1 (S) was not available.
		<b>Letter No.</b>	GV726490
<b>Previous damage / Accident</b>	None detectable	<b>Repainting</b>	None detectable
<b>Inspection conditions</b>	sufficient	<b>Lifting equipment / pit</b>	No
<b>Test drive</b>	Not performed	<b>Engine function test</b>	Performed
<b>readiness to drive</b>	Roadworthy		
<b>Manufacturer key number/ type code number</b>	2222 / BEG 00109		
<b>Emission standard</b>	EURO6;WLTP;AP;PI/CI; M, N1 I	<b>fine dust sticker</b>	
<b>Permitted total weight</b>	2,525 kg	<b>Empty weight</b>	

## Tyres

### Mounted tyres

#	Tyre size	Type of tyre	Manufacturer	Tread depth
1)	225/55 R17 97Y	Summer tyres on Light alloy	Goodyear	5mm / 5mm
2)	225/55 R17 97Y	Summer tyres on Light alloy	Goodyear	5mm / 5mm

### Additional tyres

#	Tyre size	Type of tyre	Manufacturer	Tread depth
1)	225/55 R17 97H	Winter tyres on Light alloy	Bridgestone	4mm / 4mm
2)	225/55 R17 97H	Winter tyres on Light alloy	Bridgestone	5mm / 5mm

### Replacement

Typ	Tyre size	Type of tyre	Manufacturer	Tread depth
Tirefit		Expiration date 08/2028		

**Legend: Tread depth information for the left tire is listed first, for the right tire it is listed second on the axle in the direction of travel.**

TÜV SÜD Auto Partner GmbH  
Wiesenring 2  
04159 Leipzig

Inspection location  
Hartmann Fleet Professionals GmbH  
Leerenstraße 25  
29683 Bad Fallingbommel



## Equipment



## Standard equipment

- ADAPTIVE BRAKE with hill start assist, pre-filling and drying braking in wet conditions
- Airbag: Automatic passenger airbag deactivation (The system automatically deactivates the passenger airbag as soon as it detects a rear-facing child seat or registers that the passenger seat is unoccupied. A transponder in the child seat is not necessary. If it detects that an adult is taking the seat, the airbag is automatically activated, reducing the risk of incorrect operation.)
- Anti-lock braking system (ABS)
- Foldable armrest for driver and front passenger
- Exterior mirrors, left and right, heated and electrically adjustable, painted in car color (with aspherical curved mirror glass and integrated LED turn signal)
- Basic services (breakdown management, maintenance management, accident management, telediagnosis, remote vehicle diagnostics)
- On-board computer
- Brake Assist, active (can help you avoid rear-end collisions with vehicles ahead, whether moving or stationary, as well as collisions with moving pedestrians or cyclists. In addition to distance and collision warnings, the system primarily offers situation-appropriate brake boosting – up to and including autonomous emergency braking.)
- EASY-PACK cargo cover including EASY-PACK safety net
- EASY-PACK tailgate (makes loading and unloading the luggage compartment even more convenient. You can easily start opening and closing with the push of a button and interrupt it at any time by pressing the control again.)
- Chassis: AGILITY CONTROL chassis with selective damping system and lowered suspension (offers optimal road holding without compromising driving comfort. The passive selective damping system ensures a confident driving experience on any road surface because it automatically optimizes rolling behavior, damping effect and stabilization.)
- Heated rear window with timer
- rear window wiper
- KEYLESS START
- Headrests 5-way adjustable for driver and front passenger, 4-way adjustable, and 2-way adjustable in the rear.
- LED High Performance headlights (low beam in LED reflection technology - high beam in LED reflection technology - signal light with trifunctional torch for daytime running light, position light and direction indicator in LED technology - adaptive full-LED taillights)
- Steering wheel: Multifunction steering wheel in Nappa leather in a 3-spoke design (spokes in high-gloss black with silver chrome trim - shift paddles in silver chrome - control via touch panels: left: instrument cluster, cruise control and speed limiter or Active Distance Assist DISTRONIC; right: multimedia system (e.g., audio volume and track selection, telephony and navigation); touch sensitivity adjustable via media display)
- AdBlue tank with a capacity of 23.5 liters
- Airbag for driver and front passenger
- Airbag: Kneebag for driver
- Airbag: Sidebag for driver and front passenger (combined thorax/pelvisbag)
- Airbag: Windowbags left/right
- Premium ambient lighting with 64 colors and 3 color zones
- AMG sports pedal assembly made of brushed stainless steel with rubber studs
- Traction control (ASR)
- Attention Assist (can detect typical signs of fatigue based on driver behavior and warn the driver of increasing tiredness or inattentiveness. This system can increase driving safety, especially on long journeys and at night. ATTENTION ASSIST detects typical signs of fatigue and severe inattentiveness based on steering behavior and warns the driver visually and audibly of impending microsleep.)
- Diesel particulate filter
- Tachometer
- Third brake light
- DYNAMIC SELECT (The DYNAMIC SELECT driving programs change the driving behavior of your Mercedes at the touch of a button. For example, you can control the characteristics of the engine, transmission, suspension and steering to suit the driving situation: whether dynamic in Sport mode, completely relaxed in Comfort mode or particularly economical in Eco mode. You determine the style of your drive.)
- Electronic Stability Program (ESP) (with traction control (ASR))
- Chassis: Air suspension on the rear axle with level control
- Electric window regulator with comfort operation and anti-pinch protection, 4-way
- Velour floor mats (in interior color)
- Transmission: 9-speed automatic, 9G-TRONIC (including DIRECT SELECT gear selector and DIRECT SELECT steering wheel shift paddles)
- Interior headliner in nevaugrau fabric
- THERMATIC automatic climate control (2-zone automatic climate control: allows individually adjustable temperature for driver and front passenger - climate settings can be controlled via the multimedia system or the climate control unit in the center console - automatic recirculation (only in conjunction with navigation) - fine dust activated carbon filter for filtering dust, soot and pollen as well as reducing pollutants and odors - dew point sensor, continuous defrost nozzle under the windshield and central defrost outlet)
- Steering column mechanically adjustable in height and length



- Center console piano black finish
- Center console with spontaneous storage (storage compartment under the armrest with 2 USB ports (Type C) and open storage on the back -cupholders front and rear -storage compartments in the door panels with cup holders -lockable, air-conditioned glove compartment -glasses compartment in the overhead control unit (not included with MBUX Interior Assistant))
- Package: Storage (Double cup holder in the center console - Map pockets on the back of the front seats - Net on the boot floor - Folding box under the boot/cargo area floor)
- Package: AVANTGARDE Exterior (43.2 cm (17") light-alloy wheels in 5-twin-spoke design, painted high-gloss black and polished with 225/55 R 17 tires on 7.5 J x 17 ET 40 rims - Radiator grille with integrated Mercedes star - Hood with pronounced power domes - Front bumper with chrome trim strip, chrome front splitter - Side skirts and window surrounds in polished aluminum - Side sills painted in body color - Roof rails in polished aluminum - Rear bumper with chrome trim strip - Exhaust system with two tailpipe trims)
- PRE-SAFE system (This system can detect critical driving situations in advance and initiate preventive measures to protect the occupants if an accident is imminent. In addition to reversible seatbelt tensioning and other measures, PRE-SAFE Sound is now also included in its range of functions.)
- Radio accessories: Digital radio (For the DAB, DMB and DAB+ standards. The digital radio offers noise-free, CD-quality sound via DAB (including DAB+ and DMB) and program-related additional information, e.g., album art, weather maps, news and traffic maps. Three DAB tuners ensure the best possible reception quality for the selected station in the background.)
- Tire pressure monitoring system (continuously monitors the inflation pressure of all four tires)
- Remote Services Plus (Communication module - Mercedes me services: remote vehicle status query, programming of auxiliary heating/ventilation, remote door locking and unlocking, sunroof/windows with remote locking and opening including ventilation remote control, personalization, vehicle location, vehicle tracking, geographic vehicle monitoring, parking service monitoring, finder function (Remote Vehicle Finder), notification in case of exceeding the driving speed, Send2Car-Fun, accident and breakdown management, maintenance management, telediagnosis, remote vehicle diagnostics, software updates)
- Power steering
- Seats: Rear seat backrests foldable 40/20/40 split (EASY-PACK Quickfold - double cupholder - storage compartment)
- Power outlet: 12V socket in the cargo area (For connecting notebooks, MP3 players, mobile phones, coolers and other electrical devices.)
- High-visibility vest for drivers
- Electronic immobilizer (including locking system with 3-channel radio remote control in the electronic key in chrome look, optical locking feedback and emergency opening (approved by AZT and TÜV))
- Mercedes-Benz Emergency Call System (can provide a crucial time advantage in an emergency. A communication module with its own SIM card automatically triggers an emergency call in the event of an accident, which can shorten the time until emergency services arrive. The emergency call can also be triggered manually to organize rapid assistance.)
- Navigation accessories: Pre-installation for Live Traffic Information
- Navigation: Hard drive navigation (Mercedes-Benz look and feel of navigation, all map data stored on hard drive, fast hard drive navigation, up-to-date map data through 3 years of free map updates (from initial registration, vehicle-specific), destination input via touch function or voice control, route calculation including waypoints, numerous route options (Eco, Trailer, Fast, Short, Automatic, etc.) as well as avoidance options (motorways, ferries, tunnels, toll roads, unpaved roads, car trains, vignette roads))
- Package: Seating comfort (various electric and manual adjustment options for the front seats to adapt to the specific body and comfort requirements of the driver and front passenger - electro-pneumatic 4-way lumbar support with control element on the seat - electric seat cushion tilt adjustment - electric height adjustment - electric backrest adjustment - mechanical seat cushion depth adjustment by 6 cm with leg rest pad - mechanical longitudinal adjustment - mechanical headrest adjustment)
- Radio: Extended MBUX functions (personalization (profiles) and prediction functions - LINGUATRONIC with natural language understanding - activation via Hey Mercedes - Wi-Fi hotspot - internet radio)
- Radio: MBUX Multimedia System (Enjoy the beauty and intelligence of a digitized multimedia system. You decide which information it displays. Look forward to a fully digital cockpit consisting of two 10.25-inch displays with touch functionality for the media display. - Bluetooth interface - USB - SD card / SDHC card - Dual tuner radio - Online-enabled multimedia system)
- Radio accessory: Communication module (LTE) for using Mercedes me connect services (The communication module (LTE) offers you a clear increase in comfort and safety. It constantly connects the vehicle to the internet – so that you can use helpful services such as the Live Traffic Information from Mercedes me connect. Two mobile antennas and an LTE-enabled SIM card ensure a fast connection.)
- Windscreen wipers with rain sensor (with 2 sensitivity levels - the electronically controlled rain sensor makes driving more relaxed in adverse weather conditions - the system detects whether the windscreen is wet and, when intermittent wiping is activated, automatically adjusts the wiper frequency to the appropriate level depending on the amount of precipitation)
- Seats: i-Size child seat attachment (on the outer rear seats - The system allows for quick and secure attachment of i-Size and ISOFIX child seats in the rear for the best possible protection of the child in the event of an accident. Top tether attachment points offer additional safety by anchoring the child seat behind the rear headrests.)



- Central locking
- Decorative elements: aluminum with longitudinal brushing, light finish

- Touchpad (integrated into the center console, including a palm rest - single and multi-finger gestures, swipe movements and zoom gestures by spreading and pinching the fingers - recognizes handwritten characters: letters, special characters and numbers - clear haptic feedback)
- Green heat-insulating glass all around (including rear window made of single-pane safety glass)

### Extra equipment

- Adaptive High Beam Assist (You activate the system with one operation and then benefit from the long beam range.)
- Upholstery: Leather
- Auxiliary heater (including auxiliary ventilation in summer) - The auxiliary heater ensures ice-free visibility and pleasant interior temperatures all year round from the start of the journey and can also be controlled via smartphone. This provides a noticeable increase in comfort and safety, especially when a garage is not available.
- TIREFIT with tire inflation compressor
- Paint finish: Metallic
- Package: Business (MBUX High-End Package - Connectivity Package Navigation - Traffic Sign Assist - Smartphone Integration (Apple CarPlay and Android Auto) - Preparation for Digital Key Handover - Widescreen Cockpit - Wireless Charging System for Mobile Devices - MBUX Augmented Reality for Navigation - Heated Seats for Driver and Front Passenger - Parking Package with Rearview Camera - Fuel Tank with 66 Liter Capacity (916) (60l for Diesel Plug-in Hybrids).)

## Brief expert findings

Documents submitted	At the time of the inspection, the vehicle registration certificate Part 2 (title) was available, but the vehicle registration certificate Part 1 (document) was not. (Copy)
VIN comparison	The vehicle identification number (VIN) was read from the vehicle and its conformity with the submitted documents was confirmed by the undersigned during the inspection.
Inspection	The inspection conditions were sufficient for the assessment of the vehicle. No lifting equipment or pit was available for inspecting the vehicle. Therefore, inspection of the vehicle's underside was only possible to a limited extent.
Test drive	No test drive/shunting maneuver was carried out during the inspection of the vehicle.
Engine function test	An engine test run was performed.
readiness to drive	The vehicle was roadworthy at the time of inspection.

## Value reducing factors

No.	Component group	Description
1	Roof	Roof rail - left side - Scratch(es) - Loss in value
2	Roof	Roof rail - right side - Scratch(es) - Loss in value
3	Sill - left side	Sill - Dent / paintcoat damage - Smart repair
4	Seat - front	Seat cover - left side - Scratch(es) - Smart repair
5	Seat - front	Seat cover - right side - Scratch(es) - Smart repair
6	Seat - rear	Upholstery - Scratch(es) - Smart repair
7	Mudguard - right side	Mudguard - right side - Scratch(es) - Smart repair
8	Misc.	Inspection / maintenance - Due - Perform
9	Wheel / tyres	Alloy rim - front right side - Scratch(es) - Replace
10	Front bumper	Front bumper - Scratch(es) - Paint
11	Roof	Roof rail - left side (Anätzung) - Paint defect - Repair and paint
12	Side panel - rear left side	Side panel - Dent / paintcoat damage - Repair and paint
13	Roof	Roof (Anätzung) - Paint defect - Repair and paint



## Wear and tear

No.	Component group	Description
1	Instrument panel	Centre console - front - Scratch(es) - No deduction
2	2nd wheel set	1 alloy rim - Scratch(es) - No deduction
3	Boot lid / rear door	Boot lid - Scratch(es) - No deduction
4	Vehicle glazing	Windscreen - Stone chips - No deduction

The vehicle shows signs of wear and tear commensurate with its age and use.

## Missing parts

### Description

Heating system - Remote control auxiliary heating

## Order/Scope of Order

An order was placed to prepare a sales report for the described vehicle. This report includes the following:

- Description of key vehicle information
- Documentation of equipment features  
*(Delivery by third-party service providers)*
- Documentation of damage, defects, missing parts
- Documentation of prior damage, unrepaired prior damage, repainting
- A brief visual or functional inspection of the equipment details, if possible.  
*(Functional testing of driver assistance systems is not included in the scope of services!)*
- a photographic documentation of the vehicle

## Basis for the order

This product is based on the guidelines for vehicle returns and valuations published by Alphabet Fleet GmbH. The expert makes the specific findings in each individual case objectively, within the framework of the prescribed standards, based on their own expertise.

The vehicle inspection takes place in a fully assembled, unassembled state.

Damage or defects that can only be detected during disassembly/diagnostic work or through further investigation remain within the realm of prognostic risk. An increased risk exists due to concealed defects caused by fraudulent misrepresentation and which were not identifiable by the expert.

Damage or defects resulting from normal use or wear and tear of the vehicle will be accepted in accordance with the applicable standard.

There was no explicit identification or monetary consideration of the expected features within the product.

Features which, in their nature and extent, slightly exceed normal use but do not constitute unacceptable damage, will be documented and indicated as signs of wear, if applicable.

Damage or defects that, according to the applicable standard, can no longer be attributed to normal use or wear and tear are listed under "Value Reducing Factors" in the product description.

Depending on the product specification, a monetary ID can be provided. If this takes place, the costs can be 100% d or pro rata depending on the vehicle's age and mileage.

## Previous damages

No apparent prior damage that had been repaired could be found on the vehicle.

## Comments

- Winterradsatz ist kein Bestandteil des Auslieferungsumfangs.



Figure 1: Diagonal front (left)



Figure 2: Diagonal front (right)



Figure 3: Diagonal rear (left)



Figure 4: Diagonal rear (right)



Figure 5: Interior - front



Figure 6: Interior - rear





Figure 13: Documents



Figure 14: Additional tyres



Figure 15: Additional tyres



Figure 16: Additional tyres

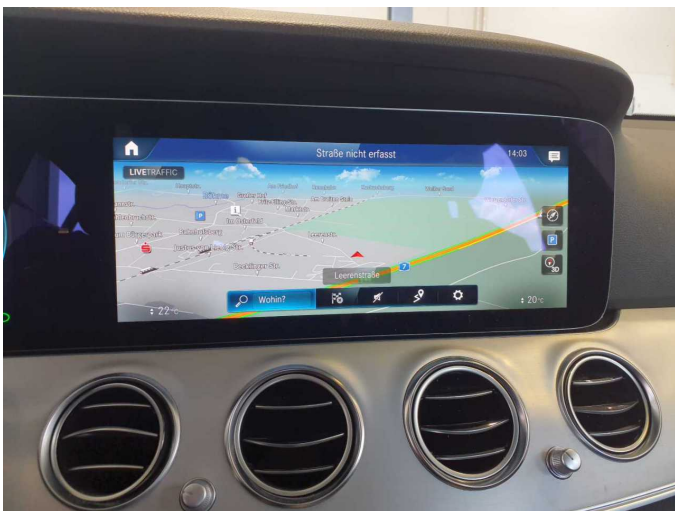


Figure 17: Navigation



Figure 18: Misc.



Figure 19: Misc.



Figure 20: Misc.

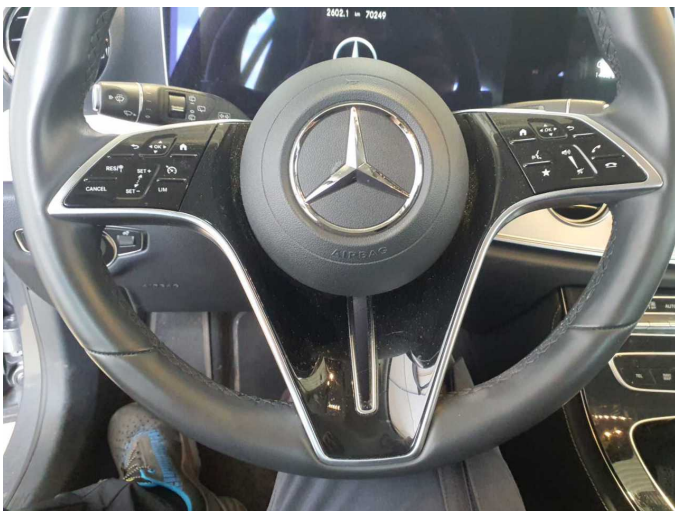


Figure 21: Misc.



Figure 22: Misc.



Figure 23: Misc.



Figure 24: Misc.



Figure 25: Misc.



Figure 26: Misc.



Figure 27: Misc.



Figure 28: Misc.

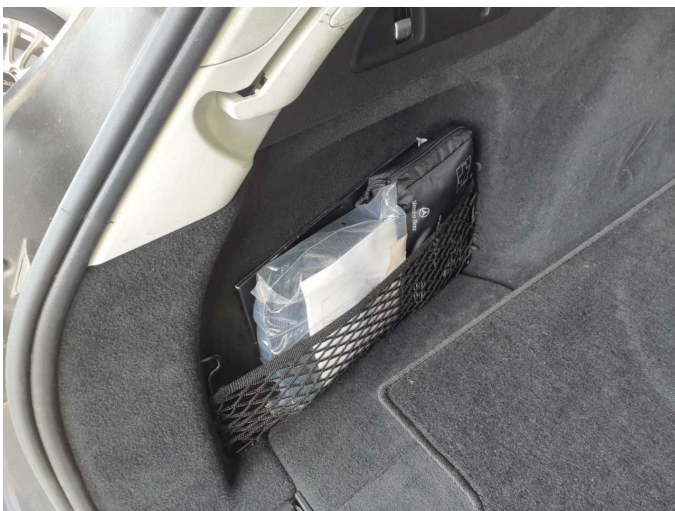


Figure 29: Misc.



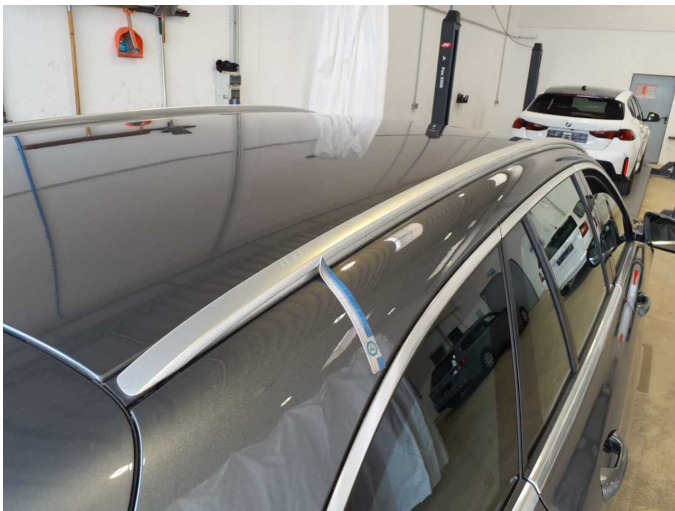
Figure 30: Misc.



**Damage 1:** Roof: Roof rail - left side - Scratch(es) - Loss in value



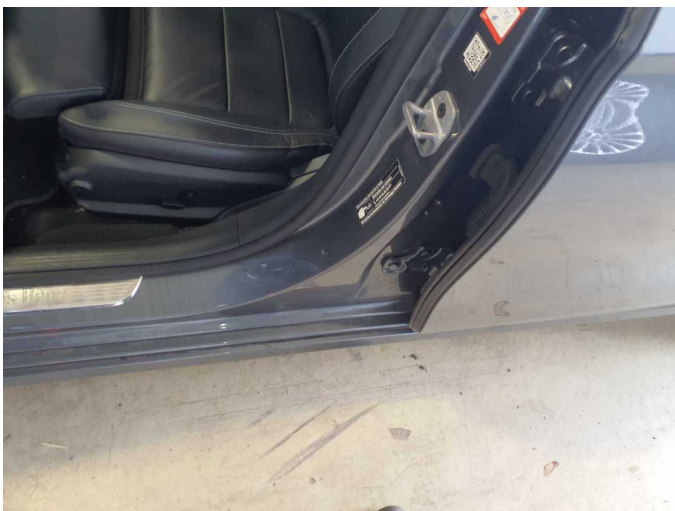
**Damage 1:** Roof: Roof rail - left side - Scratch(es) - Loss in value



**Damage 2:** Roof: Roof rail - right side - Scratch(es) - Loss in value



**Damage 2:** Roof: Roof rail - right side - Scratch(es) - Loss in value



**Damage 3:** Sill - left side: Sill - Dent / paintcoat damage - Smart repair



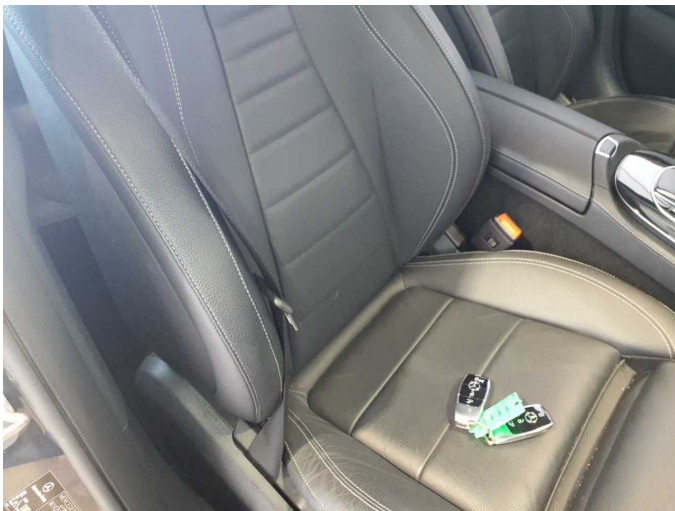
**Damage 3:** Sill - left side: Sill - Dent / paintcoat damage - Smart repair



**Damage 4:** Seat - front: Seat cover - left side - Scratch(es) - Smart repair



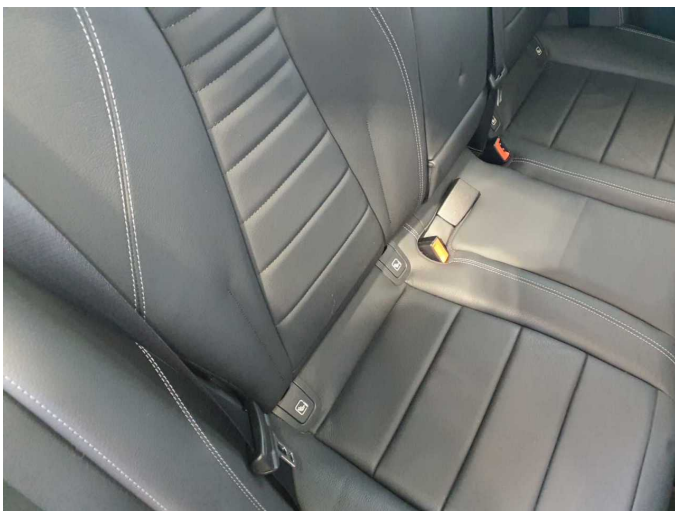
**Damage 4:** Seat - front: Seat cover - left side - Scratch(es) - Smart repair



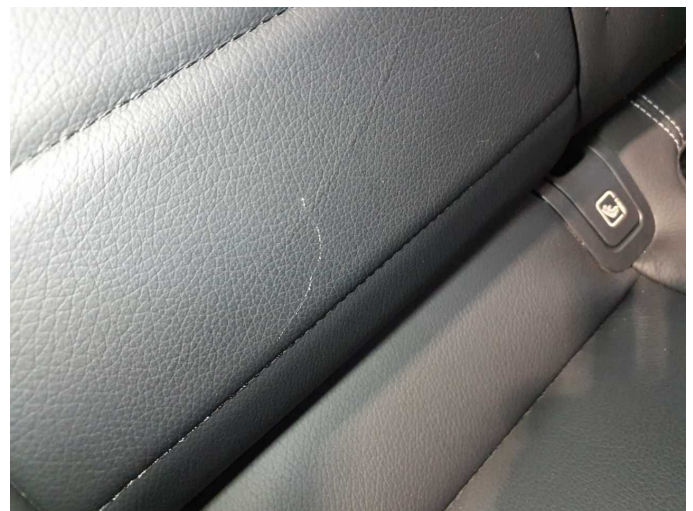
**Damage 5:** Seat - front: Seat cover - right side - Scratch(es) - Smart repair



**Damage 5:** Seat - front: Seat cover - right side - Scratch(es) - Smart repair



**Damage 6:** Seat - rear: Upholstery - Scratch(es) - Smart repair



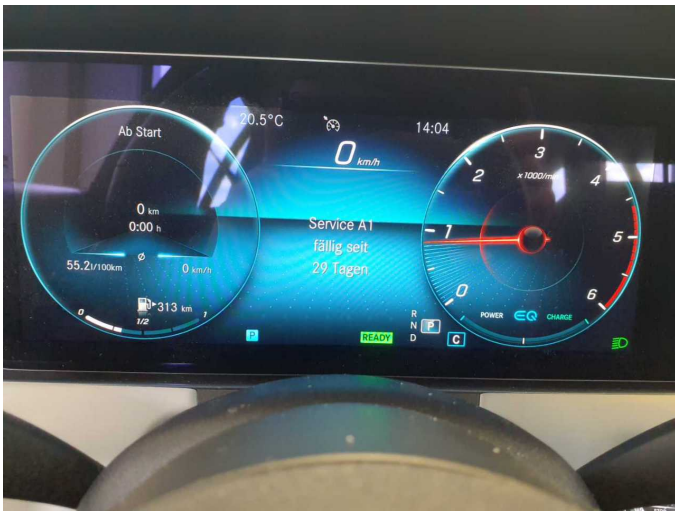
**Damage 6:** Seat - rear: Upholstery - Scratch(es) - Smart repair



**Damage 7:** Mudguard - right side: Mudguard - right side - Scratch(es) - Smart repair



**Damage 7:** Mudguard - right side: Mudguard - right side - Scratch(es) - Smart repair



**Damage 8:** Misc.: Inspection / maintenance - Due - Perform



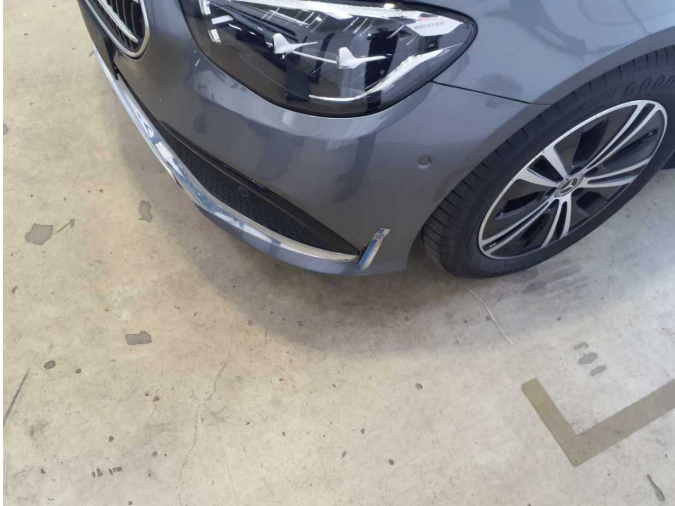
**Damage 9:** Wheel / tyres: Alloy rim - front right side - Scratch(es) - Replace



**Damage 9:** Wheel / tyres: Alloy rim - front right side - Scratch(es) - Replace



**Damage 9:** Wheel / tyres: Alloy rim - front right side - Scratch(es) - Replace



**Damage 10:** Front bumper: Front bumper - Scratch(es) - Paint



**Damage 10:** Front bumper: Front bumper - Scratch(es) - Paint



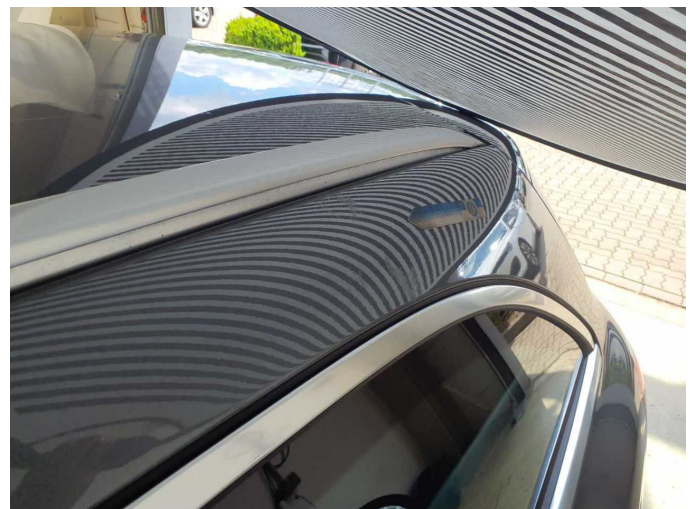
**Damage 10:** Front bumper: Front bumper - Scratch(es) - Paint



**Damage 10:** Front bumper: Front bumper - Scratch(es) - Paint



**Damage 11:** Roof: Roof rail - left side (Anätzung) - Paint defect - Repair and paint



**Damage 11:** Roof: Roof rail - left side (Anätzung) - Paint defect - Repair and paint



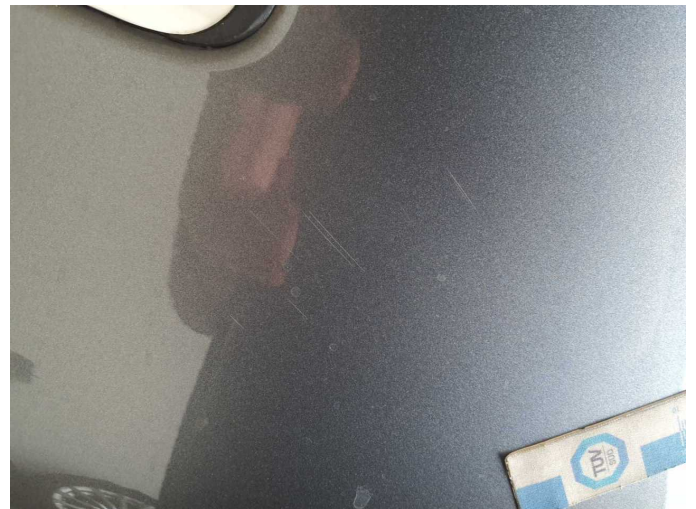
**Damage 12:** Side panel - rear left side: Side panel - Dent / paintcoat damage - Repair and paint



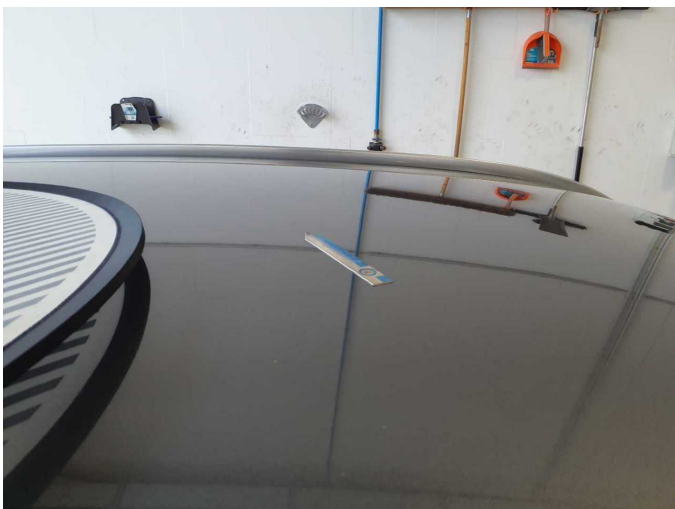
**Damage 12:** Side panel - rear left side: Side panel - Dent / paintcoat damage - Repair and paint



**Damage 12:** Side panel - rear left side: Side panel - Dent / paintcoat damage - Repair and paint



**Damage 12:** Side panel - rear left side: Side panel - Dent / paintcoat damage - Repair and paint



**Damage 13:** Roof: Roof (Anätzung) - Paint defect - Repair and paint



**Damage 13:** Roof: Roof (Anätzung) - Paint defect - Repair and paint