

## Expertise

Protocol number: 45810092  
Order No. / Reference: 26385156  
Inspection date: 3 Jun 2026

Manufacturer: Volvo

Model: XC90 T8 AWD Recharge Plus Bright

VIN: YV1LFH5V7P1947713



### Vehicle details

#### Manufacturer / Type / Model / Equipment

Volvo XC90 T8 AWD Recharge Plus Bright

**Vehicle Identification number** YV1LFH5V7P1947713

**Mileage (Read)** 119,247 km

**First registration** 20 Dec 2022

**Number of holders** 1

**Next periodical technical inspection** 11/2027  
(Report on hand)

**Power / Engine displacement** 228 kw / 1,969 ccm

**Fuel type / Cylinder** Hybr.B/E ext.auf1 / 4

**Gearbox / Number of gears** Automatic / 8

**Type of drive** All-wheel drive

**Type of vehicle** SUV

**Colour / colour code** Bright Dusk Metallic

**Doors / Seats** 5 / 5

**Upholstery type** Leather

**Colour of upholstery** Brown-Anthracite

**Vehicle with smoke odor** no



Vehicle details			
<b>Maintenance booklet / proof</b>	digital proof / complete	<b>Next maintenance in</b>	0 km
<b>Last service on / at</b>	06/2025 at 89,141 km		
<b>Key is / should be</b>	2 / 2	<b>FZG documents</b>	ZB#2 (B) was available (copy), ZB#1 (S) was not available.
		<b>Letter No.</b>	GQ207135
<b>Previous damage / Accident</b>	None detectable	<b>Repainting</b>	None detectable
<b>Inspection conditions</b>	sufficient	<b>Lifting equipment / pit</b>	yes
<b>Test drive</b>	short drive on the company premises	<b>Engine function test</b>	Performed
<b>Manufacturer key number/ type code number</b>	9101 / BUL 00009		
<b>Emission standard</b>	EURO6;WLTP;AP;PI/CI; M, N1 I	<b>fine dust sticker</b>	
<b>Permitted total weight</b>	2,950 kg	<b>Empty weight</b>	

## Tyres

Mounted tyres				
#	Tyre size	Type of tyre	Manufacturer	Tread depth
1)	235/55 R19 105V	Winter tyres on Light alloy	Nokian	5mm / 5mm
2)	235/55 R19 105V	Winter tyres on Light alloy	Nokian	5mm / 5mm
Additional tyres				
#	Tyre size	Type of tyre	Manufacturer	Tread depth
1)	275/40 R21 107V	Summer tyres on Light alloy	Continental	4mm / 4mm
2)	275/40 R21 107V	Summer tyres on Light alloy	Continental	4mm / 4mm
Replacement				
Typ	Tyre size	Type of tyre	Manufacturer	Tread depth
	Tirefit	Expiration date 11/2026		

**Legend: Tread depth information for the left tire is listed first, for the right tire it is listed second on the axle in the direction of travel.**

TÜV SÜD Auto Partner GmbH  
Wiesenring 2  
04159 Leipzig

Inspection location  
Mosolf SE & Co.KG  
Faberweg 25  
73230 Kirchheim unter Teck



## Equipment



## Standard equipment

- ABS - Anti-lock Braking System
- Passenger side airbag can be deactivated
- Active safety belts with belt tensioners
- Aluminum loading sill protector in the luggage compartment
- Dashboard and door trim in leather look with contrasting stitching
- Electrically folding exterior mirrors
- Heated exterior mirrors and rear window (automatic)
- Attachment system for carrier bags in the luggage compartment
- Fog sensor for automatic activation of the defroster function
- On-board computer
- third brake light
- Chrome applications in the front bumper
- Roof edge spoiler
- Aluminum roof rails (integrated)
- Digital services including Google Maps navigation system
- Tachometer
- Driver Awareness
- Aluminum door sill plates with Recharge lettering, front and rear
- Advanced air purification system with fine dust filtration according to air quality standard PM2.5
- Automatic emergency braking
- Front grille in waterfall design in chrome
- Transmission: 8-speed automatic transmission
- Automatic tailgate
- rear window wiper
- Intelligent driver information system
- Keyless Drive (electronic access system)
- Child safety lock for the rear doors (electric)
- Air conditioning for the 3rd row of seats
- Headrests of the 2nd row of seats can be folded down (electrically)
- Charging cable Schuko/Type 2 (Mode 2)
- Steering wheel adjustable for height and reach
- Steering wheel: Multifunction buttons on the steering wheel
- Front center armrest including cup holder
- Package: Seat Comfort Package
- Parking ticket holder
- Upholstery: Leather/leatherette comfort seats
- Radio accessories: Two USB-C ports on the back of the center console
- Tire pressure monitoring system
- Wheels: 20" 5-spoke alloy wheels, diamond cut/high-gloss black
- Safety Assistance
- Speed-sensitive power steering
- Seats: Third row of seats (7-seater)
- Seats: Child seat integrated in the middle rear seat (2nd row).
- Seats: Heated rear seats (outer seats of the 2nd row)
- Sun blinds for the rear side windows (integrated)
- Start/Stop technology
- Phone: Inductive smartphone charging system
- Premium textile floor mats, front and rear
- Acoustic Vehicle Alerting System (AVAS)
- Airbags
- All-wheel drive (AWD)
- Ambient lighting
- Android infotainment system
- Armrests with integrated storage compartment and cup holders for the 3rd row of seats (left and right)
- Electrically adjustable exterior mirrors
- Outdoor temperature display
- Hill Descent Control (HDC)
- Hill Start Assist (HSA)
- LED turn signals integrated into the exterior mirrors
- Brake energy recuperation
- Chrome applications on the rear of the vehicle
- Chrome trim strip in the door sill area with Recharge lettering
- Deactivating the high-voltage battery
- Digital Instrumentation 2nd Gen.
- Driver Assistance
- Parking assistance, front and rear
- Electronic differential lock
- Electronic Stability Control
- Electric windows front and rear
- Chrome window surround
- Bottle holder in the luggage compartment
- Luggage compartment partition net
- Seat belt height adjustment front and rear (2nd row of seats)
- Interior and exterior mirrors automatically dimming
- ISOFIX mounting for the outer rear seats
- Keyless Start
- Automatic climate control with 4-zone temperature control
- Headrests (7)
- Paint finish: Solid
- Charging box under the cargo floor
- Cargo area roller blind (semi-automatic)
- Steering wheel: Steering wheel heating
- Illuminated makeup mirror for driver and front passenger
- Emergency brake lights
- Electric parking brake
- Pollen filter
- Radio: High Performance Sound Pro audio system by Harman/Kardon
- Rain sensor with automatic light function
- Run-off Road Protection
- Wheels: Tire sealant
- Rear view camera
- Whiplash Protection System (WHIPS)
- Safety braking system with disc brakes all around (internally ventilated)
- Seats: Rear bench seat of the 2nd row in a 40/20/40 ratio or completely foldable



- Glazing: Colored glazing
- Preparation for Trailer Stability Assist (TSA)
- Immobiliser
- Central locking system with two remote controls and integrated emergency keys

- Seats: Heated front seats
- Auxiliary heater with timer (fuel-operated)
- Power socket
- Textile floor mat for the 3rd row of seats
- First aid kit and warning triangle
- Lashing eyes in the luggage compartment (foldable)
- Warning tone/indicator when seat belts are not fastened (for all seats)

### Extra equipment

- 19" winter complete wheels, 6-spoke turbine design
- Chassis: Adaptive air suspension with Four-C technology (Continuously Controlled Chassis Concept) with adjustable modes Comfort, Eco, Dynamic, Off Road including automatic leveling and entry/rear lowering (4/5 cm)
- Panoramic glass sliding sunroof with lifting function (electric) (with integrated, continuously adjustable sunshade)
- Parking camera with 360° surround view (including front, side and rear parking aid with automatic braking intervention (rear))
- Upholstery: Nappa leather comfort seats (front seats perforated) Amber Brown (with active ventilation and electrically adjustable side bolsters for driver and front passenger seats including rear center armrest (2nd row) - gearshift lever made of Swedish crystal glass by Orrefors - real wood inlay: Black Ash - headliner: Anthracite)
- Towbar (semi-electric)
- Windscreen, heater
- Paint finish: Metallic paint
- Package: Lighting Package (Headlight cleaning system - Full LED headlights "Thor's Hammer" Active High Beam with extended high beam, dynamic cornering lights, intelligent high beam assist with adaptive headlight range control and integrated LED daytime running lights - Ambient lighting Extended: Ambient lighting front/rear, on the upper dashboard, on the doors Exit lights front/rear Illuminated door pockets - opens front/rear Front entry lights with lettering Rear footwell lighting Work light on the tailgate)
- Wheels: 21" 8-spoke alloy wheels, diamond cut/high-gloss black (tires 275/40 R21; rims 9 x 21")
- Glazing: Side and rear windows tinted (from the B-pillar back)

### Brief expert findings

Documents submitted	At the time of the inspection, the vehicle registration certificate Part 2 (title) was available, but the vehicle registration certificate Part 1 (document) was not. (Copy)
VIN comparison	The vehicle identification number (VIN) was read from the vehicle and its conformity with the submitted documents was confirmed by the undersigned during the inspection.
Inspection	The inspection conditions were sufficient for the assessment of the vehicle. Lifting equipment and/or a pit were available for examining the vehicle.
Test drive	A short maneuvering and shunting exercise was carried out on the company premises.
Engine function test	An engine test run was performed.

### Value reducing factors

No.	Component group	Description
1	Trim / covers	Floor mats - Holes - Replace
2	Door - rear right side	Door - Scratch(es) - Cover / polish
3	Door - rear left side	Door - Scratch(es) - Cover / polish
4	Bonnet	Insulation lining - Holes - Replace
5	Rear bumper	Rear bumper - Scratch(es) - Paint
6	Misc.	Inspection / maintenance - Due - Replace
7	Side panel - rear left side	Side panel - Dent / paintcoat damage - Paint
8	2nd wheel set	1 alloy rim - Scratch(es) - Replace
9	2nd wheel set	1 alloy rim - Scratched - Replace



## Wear and tear

No.	Component group	Description
1	Boot lid / rear door	Boot lid - dent(s) - No deduction
2	Vehicle glazing	Windscreen - Stone chips - No deduction

The vehicle shows signs of wear and tear commensurate with its age and use.

## Order/Scope of Order

An order was placed to prepare a sales report for the described vehicle. This report includes the following:

- Description of key vehicle information
- Documentation of equipment features  
*(Delivery by third-party service providers)*
- Documentation of damage, defects, missing parts
- Documentation of prior damage, unrepaired prior damage, repainting
- A brief visual or functional inspection of the equipment details, if possible.  
*(Functional testing of driver assistance systems is not included in the scope of services!)*
- a photographic documentation of the vehicle

## Basis for the order

This product is based on the guidelines for vehicle returns and valuations published by Alphabet Fleet GmbH. The expert makes the specific findings in each individual case objectively, within the framework of the prescribed standards, based on their own expertise.

The vehicle inspection takes place in a fully assembled, unassembled state.

Damage or defects that can only be detected during disassembly/diagnostic work or through further investigation remain within the realm of prognostic risk. An increased risk exists due to concealed defects caused by fraudulent misrepresentation and which were not identifiable by the expert.

Damage or defects resulting from normal use or wear and tear of the vehicle will be accepted in accordance with the applicable standard.

There was no explicit identification or monetary consideration of the expected features within the product.

Features which, in their nature and extent, slightly exceed normal use but do not constitute unacceptable damage, will be documented and indicated as signs of wear, if applicable.

Damage or defects that, according to the applicable standard, can no longer be attributed to normal use or wear and tear are listed under "Value Reducing Factors" in the product description.

Depending on the product specification, a monetary ID can be provided. If this takes place, the costs can be 100% or pro rata depending on the vehicle's age and mileage.

## Previous damages

No apparent prior damage that had been repaired could be found on the vehicle.



Figure 1: Diagonal front (left)



Figure 2: Diagonal front (right)



Figure 3: Diagonal rear (left)



Figure 4: Diagonal rear (right)



Figure 5: Interior - front



Figure 6: Interior - rear



Figure 7: Instrument cluster



Figure 8: Instrument panel



Figure 9: Interior 360° view

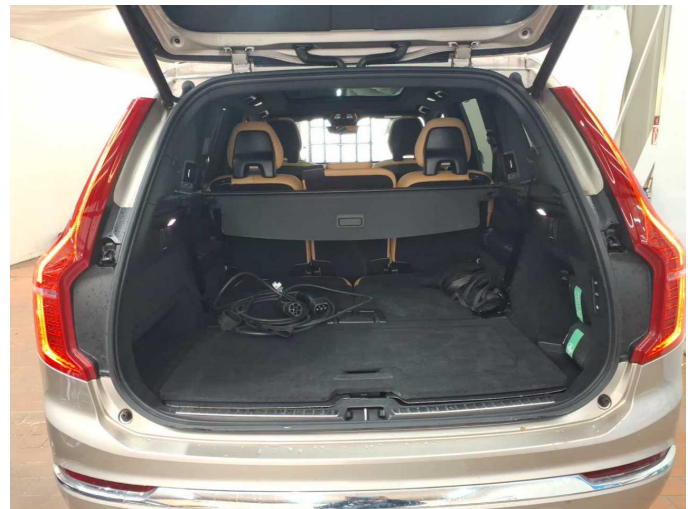


Figure 10: Cargo area



Figure 11: VIN



Figure 12: Mounted tyres

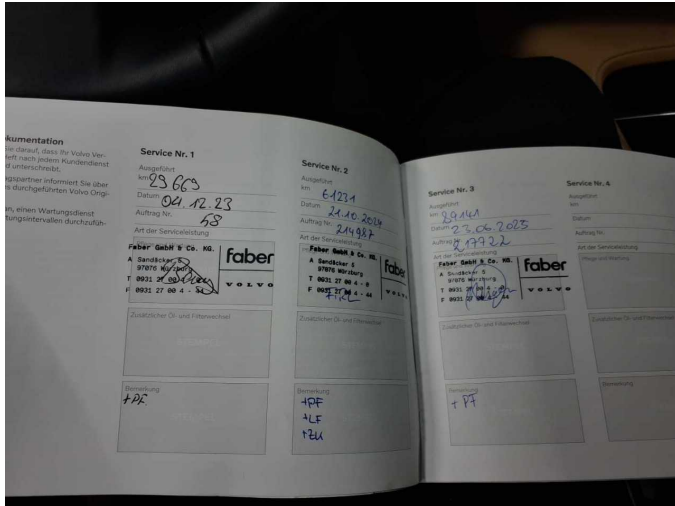


Figure 13: Documents



Figure 14: Documents



Figure 15: Additional tyres



Figure 16: Additional tyres

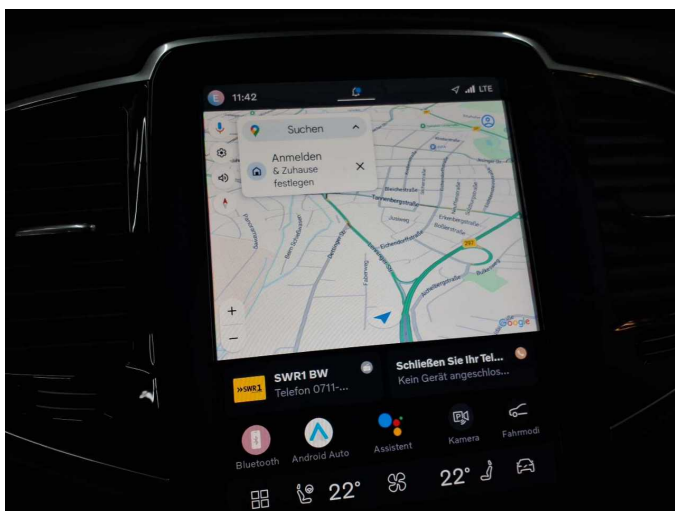


Figure 17: Navigation



Figure 18: Misc.



Figure 19: Misc.



Figure 20: Misc.



Figure 21: Misc.

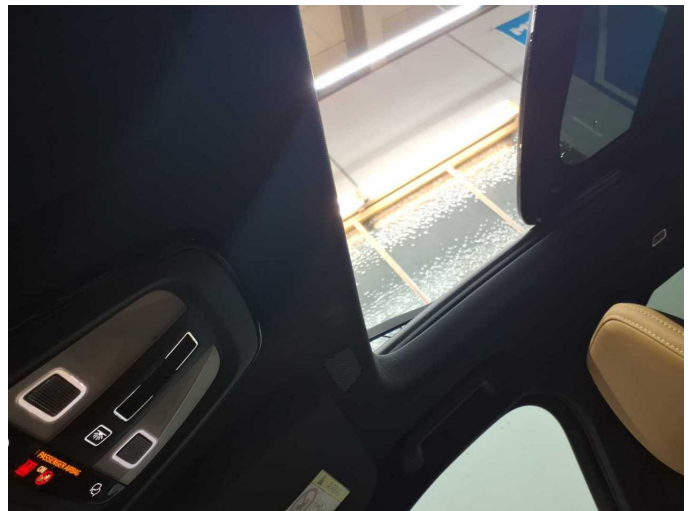


Figure 22: Misc.

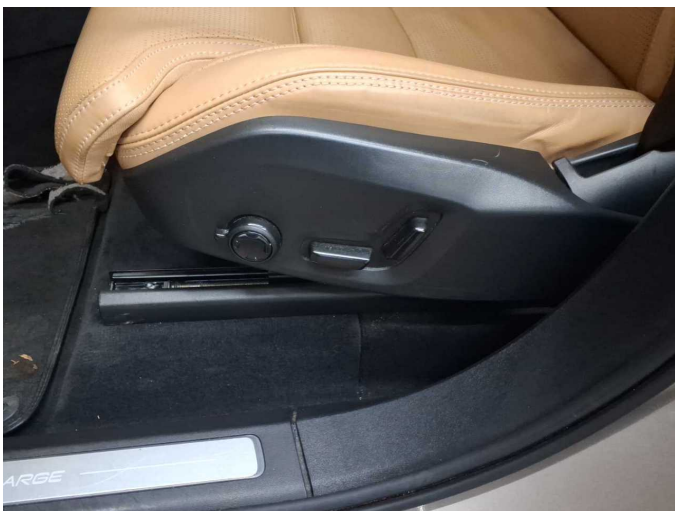


Figure 23: Misc.

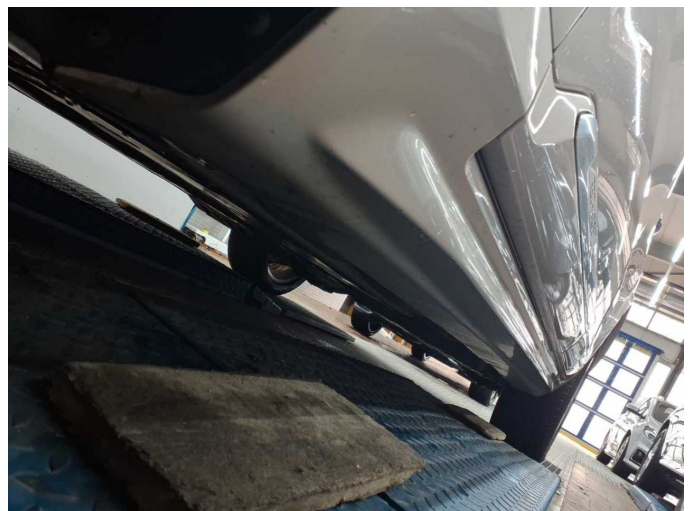


Figure 24: Misc.



Figure 25: Misc.



Figure 26: Misc.



Figure 27: Misc.



Figure 28: Misc.

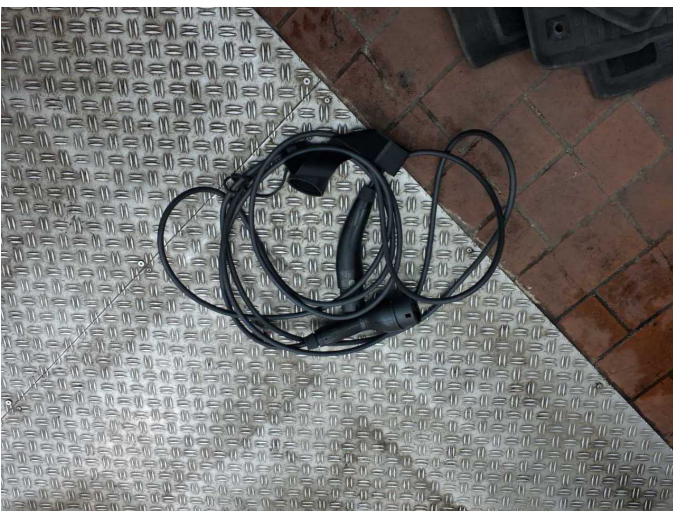


Figure 29: Misc.



Figure 30: Misc.



Figure 31: Misc.



Figure 32: Misc.



Figure 33: Misc.

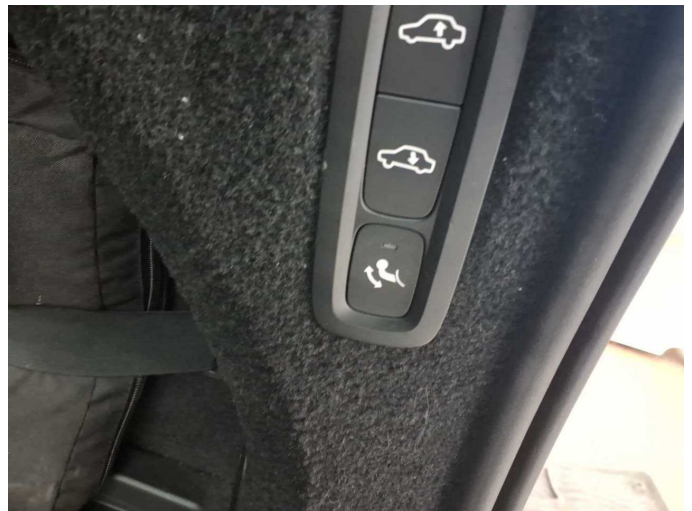


Figure 34: Misc.



Figure 35: Misc.

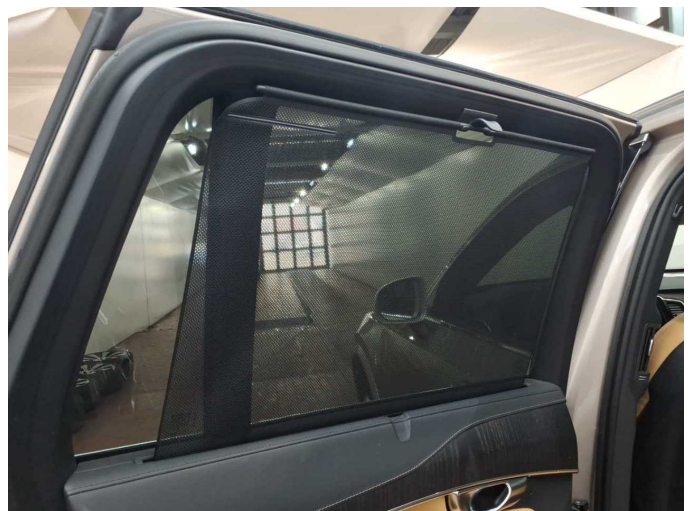


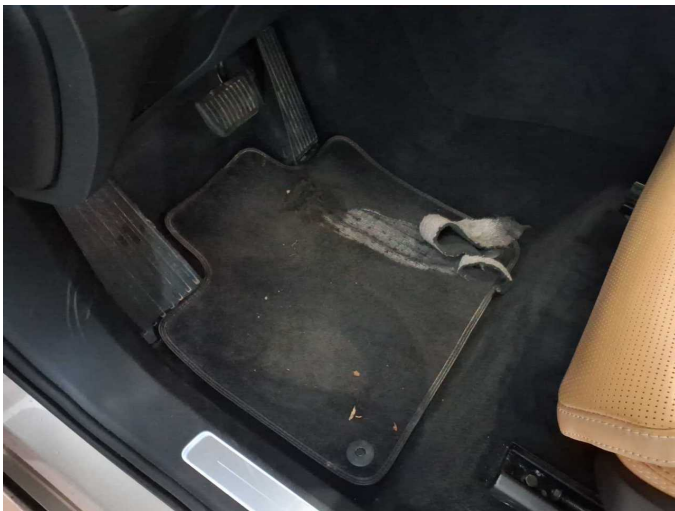
Figure 36: Misc.



Figure 37: Misc.



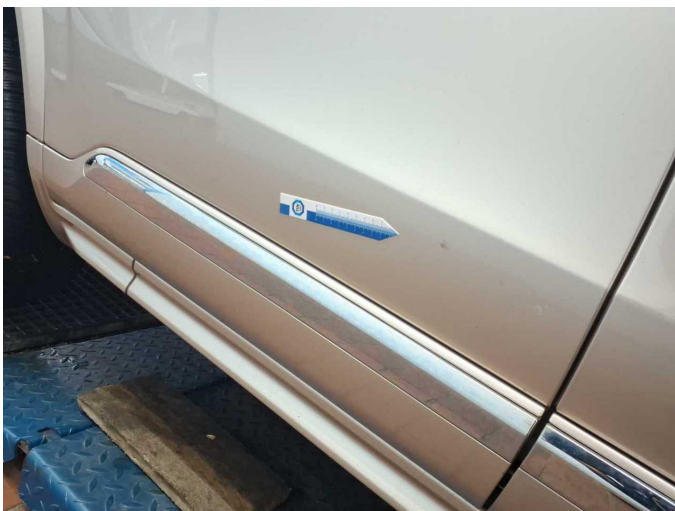
Figure 38: Misc.



Damage 1: Trim / covers: Floor mats - Holes - Replace



Damage 1: Trim / covers: Floor mats - Holes - Replace



Damage 2: Door - rear right side: Door - Scratch(es) - Cover / polish



Damage 2: Door - rear right side: Door - Scratch(es) - Cover / polish



**Damage 2:** Door - rear right side: Door - Scratch(es) - Cover / polish



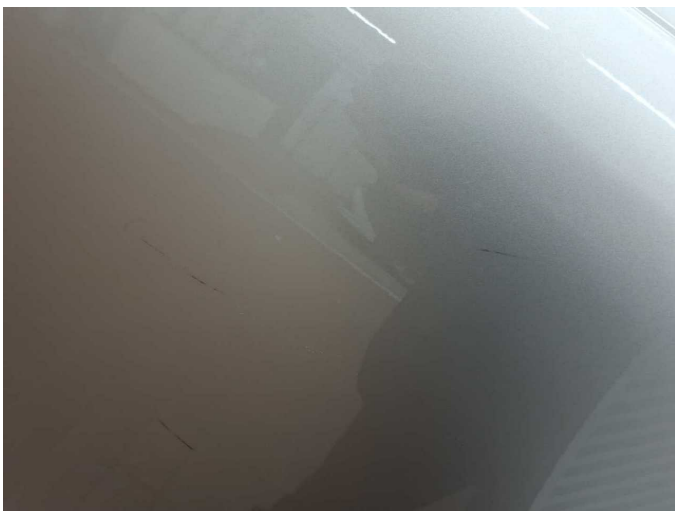
**Damage 2:** Door - rear right side: Door - Scratch(es) - Cover / polish



**Damage 3:** Door - rear left side: Door - Scratch(es) - Cover / polish



**Damage 3:** Door - rear left side: Door - Scratch(es) - Cover / polish



**Damage 3:** Door - rear left side: Door - Scratch(es) - Cover / polish



**Damage 3:** Door - rear left side: Door - Scratch(es) - Cover / polish



**Damage 4:** Bonnet: Insulation lining - Holes - Replace



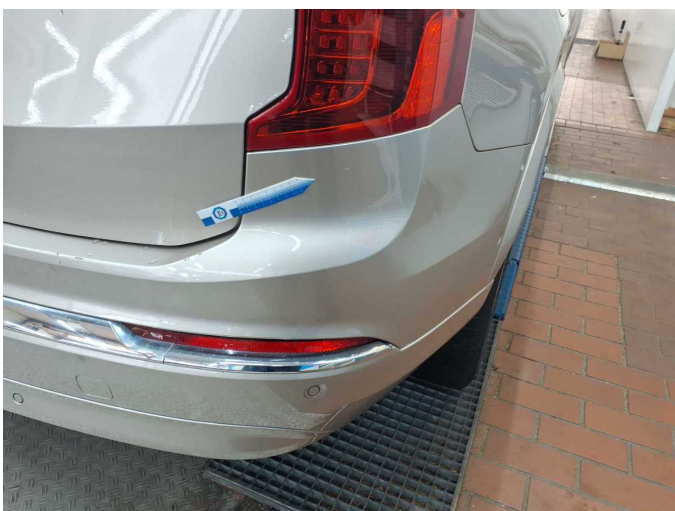
**Damage 4:** Bonnet: Insulation lining - Holes - Replace



**Damage 5:** Rear bumper: Rear bumper - Scratch(es) - Paint



**Damage 5:** Rear bumper: Rear bumper - Scratch(es) - Paint



**Damage 5:** Rear bumper: Rear bumper - Scratch(es) - Paint



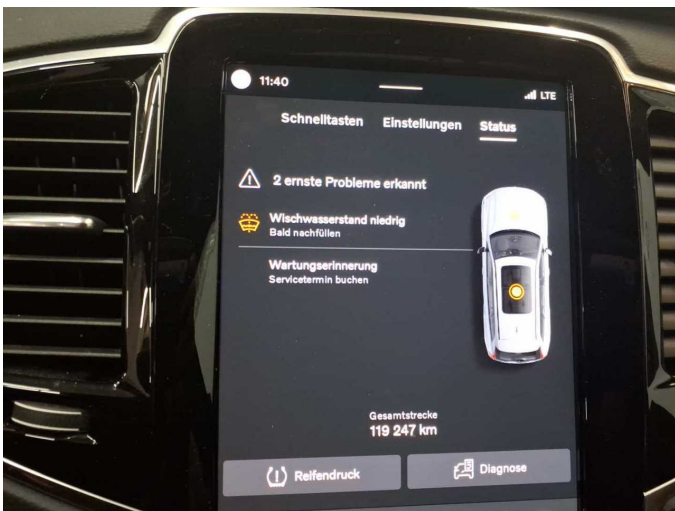
**Damage 5:** Rear bumper: Rear bumper - Scratch(es) - Paint



**Damage 5:** Rear bumper: Rear bumper - Scratch(es) - Paint



**Damage 5:** Rear bumper: Rear bumper - Scratch(es) - Paint



**Damage 6:** Misc.: Inspection / maintenance - Due - Replace



**Damage 7:** Side panel - rear left side: Side panel - Dent / paintcoat damage - Paint



**Damage 7:** Side panel - rear left side: Side panel - Dent / paintcoat damage - Paint



**Damage 7:** Side panel - rear left side: Side panel - Dent / paintcoat damage - Paint



**Damage 7:** Side panel - rear left side: Side panel - Dent / paintcoat damage - Paint



**Damage 7:** Side panel - rear left side: Side panel - Dent / paintcoat damage - Paint



**Damage 7:** Side panel - rear left side: Side panel - Dent / paintcoat damage - Paint



**Damage 7:** Side panel - rear left side: Side panel - Dent / paintcoat damage - Paint



**Damage 7:** Side panel - rear left side: Side panel - Dent / paintcoat damage - Paint



**Damage 7:** Side panel - rear left side: Side panel - Dent / paintcoat damage - Paint



**Damage 8:** 2nd wheel set: 1 alloy rim - Scratch(es) - Replace



**Damage 8:** 2nd wheel set: 1 alloy rim - Scratch(es) - Replace



**Damage 8:** 2nd wheel set: 1 alloy rim - Scratch(es) - Replace



**Damage 8:** 2nd wheel set: 1 alloy rim - Scratch(es) - Replace



**Damage 8:** 2nd wheel set: 1 alloy rim - Scratch(es) - Replace



**Damage 9:** 2nd wheel set: 1 alloy rim - Scratched - Replace



**Damage 9:** 2nd wheel set: 1 alloy rim - Scratched - Replace



**Damage 9:** 2nd wheel set: 1 alloy rim - Scratched - Replace



**Damage 9:** 2nd wheel set: 1 alloy rim - Scratched - Replace



**Wear and tear 1:** Boot lid / rear door: Boot lid - dent(s) - No deduction



**Wear and tear 1:** Boot lid / rear door: Boot lid - dent(s) - No deduction



# Wartungshistorie

(gemäß Auftraggeber Informationen)

Fahrgestellnummer: YV1LFH5V7P1947713

Hersteller / Modell: VOLVO VOLVO XC90 T8 AWD Recharge Plus Bright

Datum	KM-Stand	Beschreibung
24.06.2025	89.141	Motoröl b. Wartung; Ölfilter ern; Regelwartungsdienst; Wartung Sonstiges
21.10.2024	61.231	Luffiltereinsatz ern; Motoröl b. Wartung; Ölfilter ern; Regelwartungsdienst; Reparatur Sonstiges; Wartung Sonstiges; Zündkerzen ern
04.12.2023	29.669	Motoröl b. Wartung; Ölfilter ern; Regelwartungsdienst; Wartung Sonstiges