

## Expertise

Protocol number: 45948116  
Order No. / Reference: 26360219  
Inspection date: 10 Jun 2026

Manufacturer: Ford

Model: Focus Turnier 1.5 EcoBlue Start-Stopp-System Aut. TITANIUM

VIN: WF0PXXGCHPNY34710



### Vehicle details

#### Manufacturer / Type / Model / Equipment

Ford Focus Turnier 1.5 EcoBlue Start-Stopp-System Aut. TITANIUM

**Vehicle Identification number** WF0PXXGCHPNY34710

**Mileage (Read)** 145,070 km

**First registration** 30 Mar 2022

**Number of holders** 1

**Next periodical technical inspection** 03/2027

(Report on hand)

**Power / Engine displacement** 88 kw / 1,499 ccm

**Fuel type / Cylinder** Diesel / 4

**Gearbox / Number of gears** Automatic / 8

**Type of drive** Front drive

**Type of vehicle** Station wagon

**Colour / colour code** Agate Black Metallic

**Doors / Seats** 5 / 5

**Upholstery type** Cloth

**Colour of upholstery** Black

**Vehicle with smoke odor** no

**readiness to drive** Not roadworthy /  
moveable



## Vehicle details

<b>Maintenance booklet / proof</b>	Available / complete	<b>Next maintenance in</b>	83 %
<b>Last service on / at</b>	02/2026 at 143,644 km		
<b>Key is / should be</b>	2 / 2	<b>FZG documents</b>	ZB#2 (B) was available (copy), ZB#1 (S) was not available.
		<b>Letter No.</b>	GK788461
<b>Previous damage / Accident</b>	Detectable	<b>Repainting</b>	None detectable
<b>Inspection conditions</b>	sufficient	<b>Lifting equipment / pit</b>	yes
<b>Test drive</b>	Not performed	<b>Engine function test</b>	With complaint
<b>readiness to drive</b>	Not roadworthy / moveable		
<b>Manufacturer key number/ type code number</b>	8566 / BPV 00636		
<b>Emission standard</b>	EURO6;WLTP;AP;PI/CI; M, N1 I	<b>fine dust sticker</b>	
<b>Permitted total weight</b>	2,035 kg	<b>Empty weight</b>	

## Tyres

**Mounted tyres**

#	Tyre size	Type of tyre	Manufacturer	Tread depth
1)	205/60 R16 96H	Winter tyres on Light alloy	Michelin	5mm / 5mm
2)	205/60 R16 96H	Winter tyres on Light alloy	Continental	7mm / 7mm

**Additional tyres**

#	Tyre size	Type of tyre	Manufacturer	Tread depth
1)	205/60 R16 92V	Summer tyres on Light alloy	Uniroyal	3mm / 3mm
2)	205/60 R16 92V	Summer tyres on Light alloy	Uniroyal	3mm / 3mm

**Replacement**

Typ	Tyre size	Type of tyre	Manufacturer	Tread depth
Tirefit		Expiration date 03/2026		

**Legend: Tread depth information for the left tire is listed first, for the right tire it is listed second on the axle in the direction of travel.**



## Equipment

### Standard equipment

- Airbag: Passenger airbag deactivation
- Electrically folding exterior mirrors
- Exterior mirrors in body color, driver and passenger side, electrically adjustable and heated
- Tires: 6.5 J x 16 design wheels (4) with 205/60 R16 tires
- Fabric headliner
- Roof spoiler painted in car color
- Tachometer
- Electronic Safety and Stability Program (ESP)
- Lane keeping assist including lane keeping assist
- Electric windows front and rear
- Ford Power Start function
- Luggage compartment cover
- Speed limiter
- Transmission: 8-speed automatic transmission
- Back window, heater
- Interior lighting with LED technology
- Intelligent security system
- Air conditioning with automatic temperature control
- Paint finish: Solid
- LED headlights
- Steering wheel: 3-spoke design
- Make-up mirrors in driver and passenger sun visors
- MyKey key system (individually programmable second key)
- Front and rear parking pilot system
- Upholstery: Cloth
- Pre-Collision Assist
- Tire Pressure Monitoring System (TPMS)
- Headlight assistant with day/night sensor
- Seats: Passenger seat height-adjustable, manually
- Seats: Map grid on the driver's and front passenger's seat backrests
- Start-stop system
- Carpet floor mats in the front
- Warning system for unfastened seat belts for the 1st and 2nd rows of seats

### Extra equipment

- Tires: 6.5 J x 16 alloy wheels (4) with 205/60 R16 tires (in 6x2-spoke design)
- Package: Family Package III (Touren) (2 USB ports on the rear center console - electric tailgate, sensor-controlled (opens and closes via foot movement) - 60:40 split-folding rear seat backrest with ski pass-through - inductive charging station for mobile devices - rear center armrest with 2 cup holders - Ford Key Free system (keyless locking/unlocking) - electrically folding exterior mirrors with puddle lights)

- Anti-lock braking system (ABS) with electronic brake force distribution (EBD)
- Attachment points behind the second row of seats for mounting the safety partition net
- Hill start assist
- Roof rails, aluminum
- Diesel particulate filter (DPF)
- Electronic Shifter
- Driver information system with on-board computer, color (10.7 cm screen diagonal)
- Electronic parking brake
- FordPass Connect including eCall, live traffic information (only with navigation) and Wi-Fi hotspot
- Cruise control
- Illuminated glove compartment
- Rear window wiper
- Interior mirror, automatically dimming
- Isofix bracket
- Headrests: 2 front and 3 rear, height adjustable
- LED taillights
- Leather gear knob
- Adjustable steering column
- Center console "Premium" front
- Navigation: Ford SYNC 4 including Ford navigation system with AppLink, 13.2" touchscreen and DAB/DAB+
- Post-Collision Assist
- Tire repair kit
- Windscreen wipers with rain sensor (sensitivity adjustable)
- Electromechanical speed-dependent power steering
- Seats: Driver's seat height adjustable
- Seats: Rear seat backrest
- Seats: Front sports seats with enhanced lateral support
- 12-volt power outlet in the luggage compartment
- Lashing eyes in the luggage compartment
- Electronic immobilizer
- Central locking with remote control and remote luggage compartment release

- Paint finish: Metallic
- Package: Easy Parking (Active Parking Assist with parking and exiting function (in conjunction with 8-speed automatic transmission including semi-automated vehicle guidance) - Door edge protection - Rearview camera with "Split View" technology)
- Side windows from the 2nd row of seats and rear window, dark tinted.
- Safety partition net for luggage compartment
- Seat: Driver/passenger seat heating



## Brief expert findings

Documents submitted	At the time of the inspection, the vehicle registration certificate Part 2 (title) was available, but the vehicle registration certificate Part 1 (document) was not. (Copy)
VIN comparison	The vehicle identification number (VIN) was read from the vehicle and its conformity with the submitted documents was confirmed by the undersigned during the inspection.
Inspection	The inspection conditions were sufficient for the assessment of the vehicle. Lifting equipment and/or a pit were available for examining the vehicle.
Test drive	No test drive/shunting maneuver was carried out during the inspection of the vehicle.
Engine function test	An engine test run was performed, problem has been detected This is due to the following reason.: Mototorkontrolle
readiness to drive	The vehicle was not capable of driving under its own power at the time of inspection, but can be moved on its own axle with the aid of assistance.

## Value reducing factors

No.	Component group	Description
1	Misc.	Inspection / maintenance (Verspätet Durchgeführt) - No deduction
2	Equipment	Tirefit filler - Expired - Replace
3	Door - front right side	Door - Scratch(es) - Smart repair
4	Instrument panel	Indicator light (Bremsanlage) - on - Perform diagnosis
5	Instrument panel	Indicator light (Abs) - on - Perform diagnosis
6	Instrument panel	Indicator light (Motorkontrollleuchte) - on - Perform diagnosis

## Wear and tear

No.	Component group	Description
1	Body	Body - Scratch(es) - No deduction

The vehicle shows signs of wear and tear commensurate with its age and use.

## Previous damages

No.	Previous damage	Extent of damage (Net)
1	Side - left, Provided by user / customer, from 24 Nov 2025	1.110,75 €
2	Front, Provided by user / customer, from 11 Dec 2024	1.378,29 €
3	Side - left, Provided by user / customer, from 2 Sept 2024	1.504,37 €
4	Rear, Provided by user / customer, from 18 Feb 2026	2.295,46 €
5	Side - left, Provided by user / customer, from 29 Jun 2022	3.376,50 €

## Order/Scope of Order

An order was placed to prepare a sales report for the described vehicle. This report includes the following:

- Description of key vehicle information
- Documentation of equipment features  
(*Delivery by third-party service providers*)
- Documentation of damage, defects, missing parts
- Documentation of prior damage, unrepaired prior damage, repainting
- A brief visual or functional inspection of the equipment details, if possible.  
(*Functional testing of driver assistance systems is not included in the scope of services!*)
- a photographic documentation of the vehicle



## Basis for the order

This product is based on the guidelines for vehicle returns and valuations published by Alphabet Fleet GmbH. The expert makes the specific findings in each individual case objectively, within the framework of the prescribed standards, based on their own expertise.

The vehicle inspection takes place in a fully assembled, unassembled state.

Damage or defects that can only be detected during disassembly/diagnostic work or through further investigation remain within the realm of prognostic risk. An increased risk exists due to concealed defects caused by fraudulent misrepresentation and which were not identifiable by the expert.

Damage or defects resulting from normal use or wear and tear of the vehicle will be accepted in accordance with the applicable standard.

There was no explicit identification or monetary consideration of the expected features within the product.

Features which, in their nature and extent, slightly exceed normal use but do not constitute unacceptable damage, will be documented and indicated as signs of wear, if applicable.

Damage or defects that, according to the applicable standard, can no longer be attributed to normal use or wear and tear are listed under "Value Reducing Factors" in the product description.

Depending on the product specification, a monetary ID can be provided. If this takes place, the costs can be 100% d or pro rata depending on the vehicle's age and mileage.

## Previous damages

According to available information previous damages were repaired at the vehicle. Traces of repairs, which allow conclusions about the area of repair, were not recognizable during the inspection.

## Comments

-Der montierte Winterradsatz ist kein Bestandteil des Auslieferungsumfangs.



Figure 1: Diagonal front (left)



Figure 2: Diagonal front (right)



Figure 3: Diagonal rear (left)



Figure 4: Diagonal rear (right)



Figure 5: Interior - front



Figure 6: Interior - rear



Figure 7: Instrument cluster



Figure 8: Instrument panel

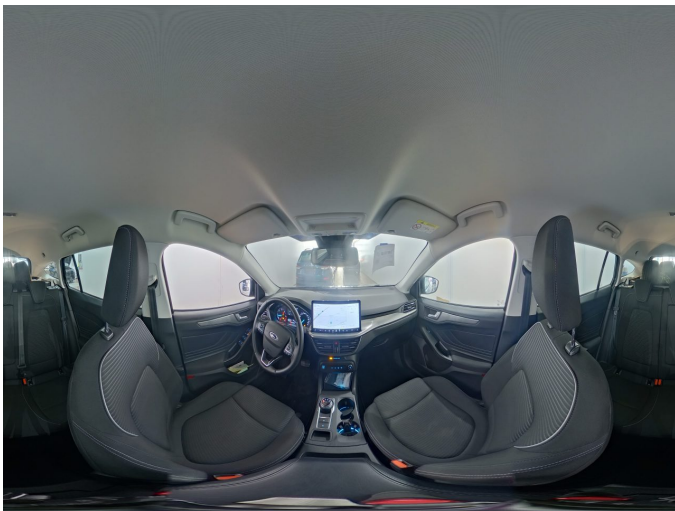


Figure 9: Interior 360° view



Figure 10: Cargo area



Figure 11: VIN



Figure 12: Mounted tyres

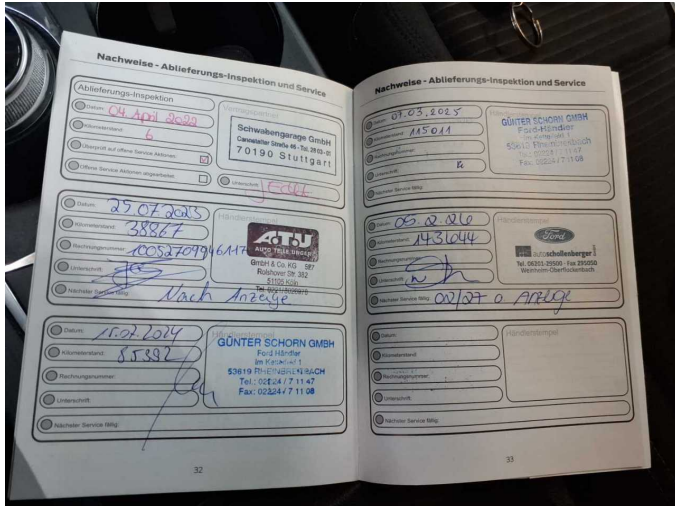


Figure 13: Documents



Figure 14: Documents

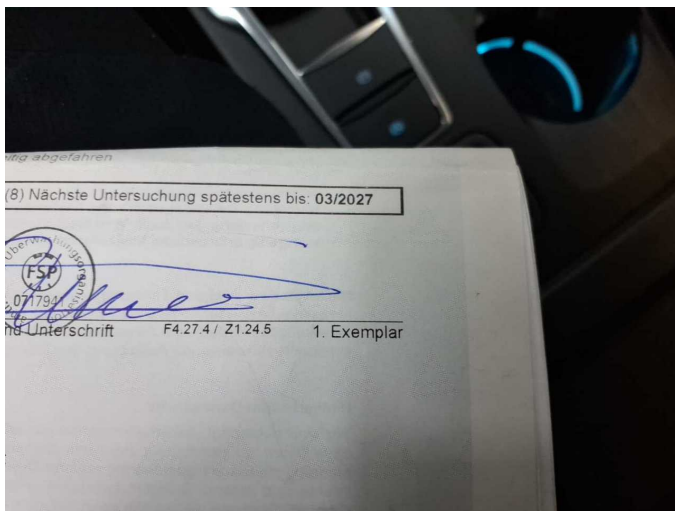


Figure 15: Documents



Figure 16: Documents



Figure 17: Additional tyres



Figure 18: Additional tyres

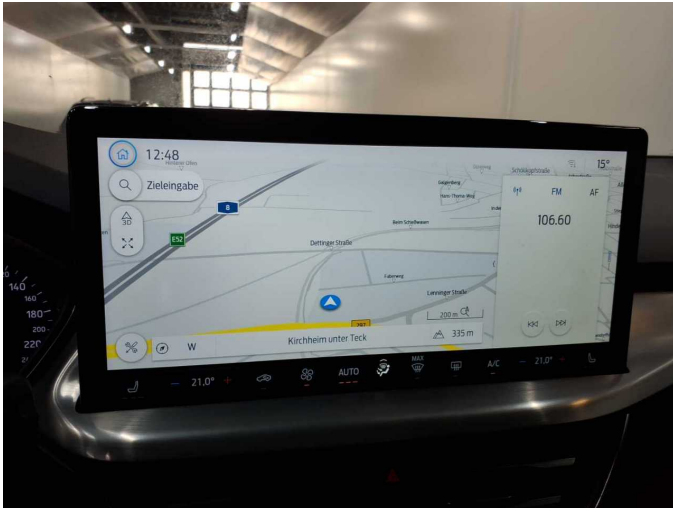


Figure 19: Navigation



Figure 20: Misc.



Figure 21: Misc.

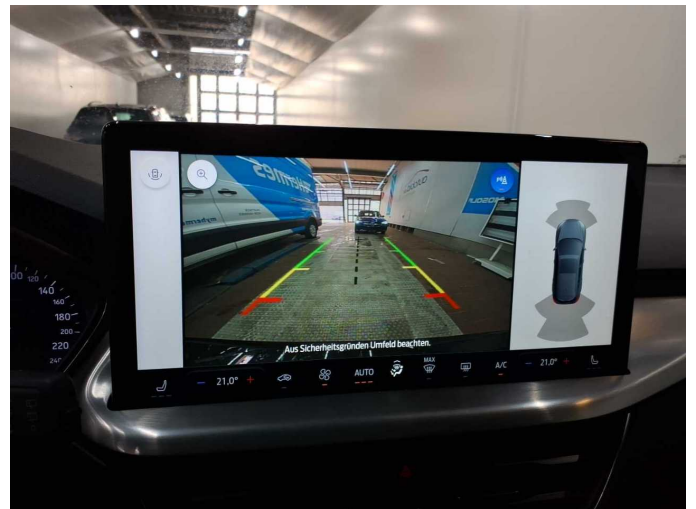


Figure 22: Misc.

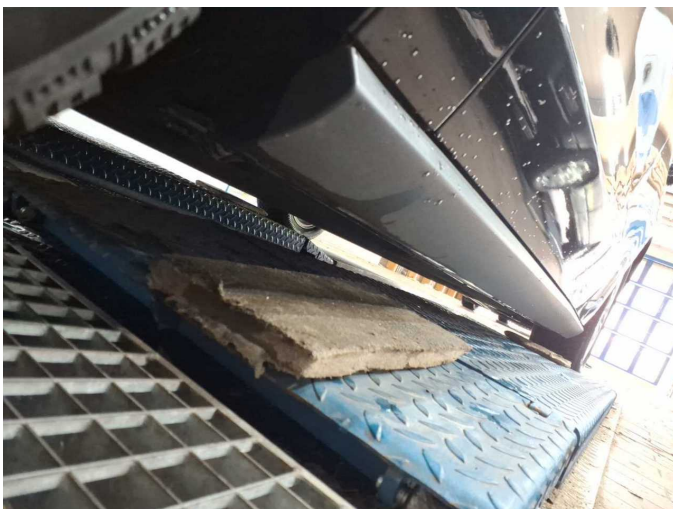


Figure 23: Misc.

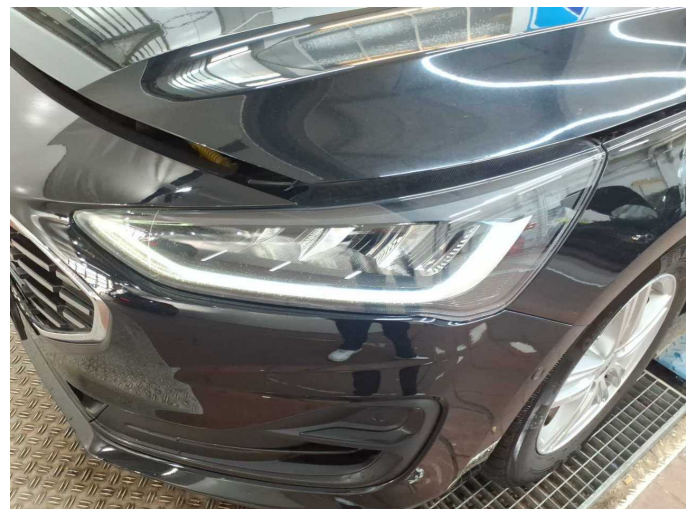


Figure 24: Misc.



Figure 25: Misc.



Figure 26: Misc.



Figure 27: Misc.



Figure 28: Misc.



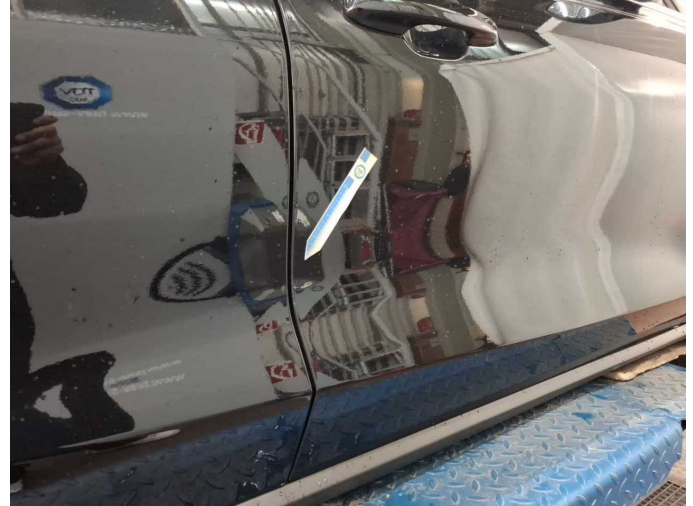
Figure 29: Misc.



Figure 30: Misc.



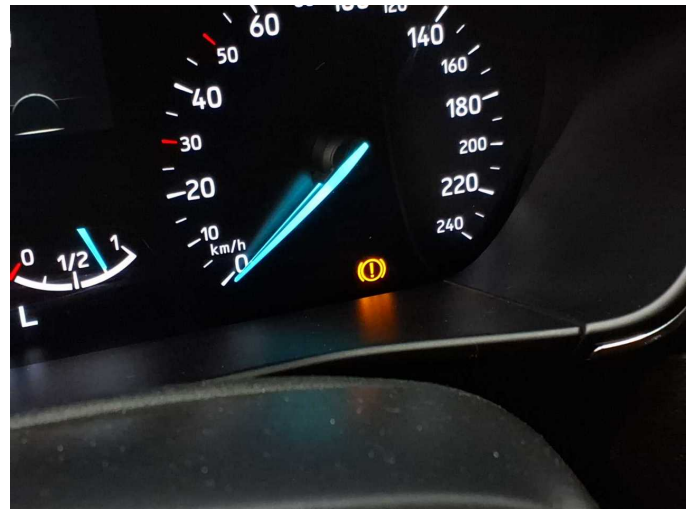
**Damage 2:** Equipment: Tirefit filler - Expired - Replace



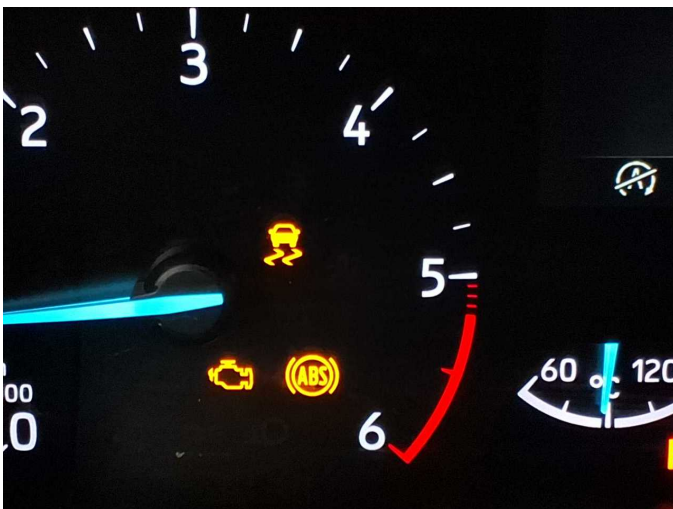
**Damage 3:** Door - front right side: Door - Scratch(es) - Smart repair



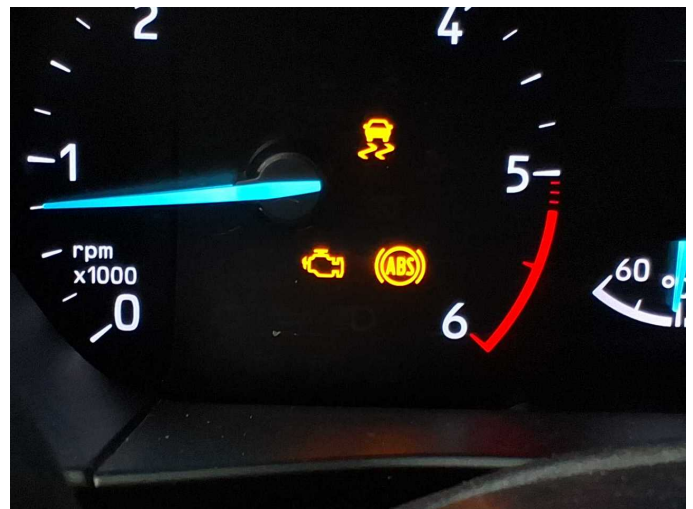
**Damage 3:** Door - front right side: Door - Scratch(es) - Smart repair



**Damage 4:** Instrument panel: Indicator light (Bremsanlage) - on - Perform diagnosis



**Damage 5:** Instrument panel: Indicator light (Abs) - on - Perform diagnosis



**Damage 6:** Instrument panel: Indicator light (Motorkontrollleuchte) - on - Perform diagnosis