

Expertise

Protocol number: 46141235
Order No. / Reference: 26496083
Inspection date: 25 Jun 2026

Manufacturer: Audi

Model: A3 40 TFSIe Sportback S tronic S line

VIN: WAUZZZGY4NA072718



Vehicle details

Manufacturer / Type / Model / Equipment

Audi A3 40 TFSIe Sportback S tronic S line

Vehicle Identification number WAUZZZGY4NA072718

Mileage (Read) 97,428 km

First registration 19 Apr 2022

Number of holders 2

Next periodical technical inspection 04/2027
(Report on hand)

Power / Engine displacement 110 kw / 1,395 ccm

Fuel type / Cylinder Hybr.B/E ext.aufll / 4

Gearbox / Number of gears Automatic / 6

Type of drive Front drive

Type of vehicle Saloon car

Colour / colour code Daytonagrau Perleffekt

Doors / Seats 5 / 5

Upholstery type Alcantara / Leather

Colour of upholstery Grey



Vehicle details

Maintenance booklet / proof	digital proof / complete	Next maintenance in	6,800 km
Last service on / at	02/2026 at 89,070 km		
Key is / should be	2 / 2	FZG documents	ZB#2 (B) was available (copy), ZB#1 (S) was not available.
		Letter No.	GJ103475
Previous damage / Accident	None detectable	Repainting	None detectable
Inspection conditions	sufficient	Lifting equipment / pit	No
Test drive	Not performed	Engine function test	Performed
Manufacturer key number/ type code number	0588 / BWY 00083		
Emission standard	EURO6;WLTP;AP;PI/CI; M, N1 I	fine dust sticker	
Permitted total weight	2,065 kg	Empty weight	

Tyres

Mounted tyres

#	Tyre size	Type of tyre	Manufacturer	Tread depth
1)	225/45 R17 94Y	Summer tyres on Light alloy	Pirelli	6mm / 6mm
2)	225/45 R17 94Y	Summer tyres on Light alloy	Pirelli	6mm / 6mm

Additional tyres

#	Tyre size	Type of tyre	Manufacturer	Tread depth
1)	205/55 R16 94H	Winter tyres on Light alloy	Continental	7mm / 7mm
2)	205/55 R16 94H	Winter tyres on Light alloy	Dunlop	7mm / 7mm

Replacement

Typ	Tyre size	Type of tyre	Manufacturer	Tread depth
	Tirefit	Expiration date 02/2026		

Legend: Tread depth information for the left tire is listed first, for the right tire it is listed second on the axle in the direction of travel.



Equipment

Standard equipment

- Airbag for driver and front passenger
- Anti-lock braking system (ABS)
- Traction control ASR
- Audi drive select
- Audi pre sense front
- Exterior mirror housings in body color
- Headliner in steel grey fabric
- Tachometer
- e-tron compact charging system
- Door sill trims with aluminum inlay at the front, illuminated, with S lettering
- Electronic Stability Control (ESC)
- Chassis: Standard chassis
- Remote key (without Safe-Lock)
- Removable luggage compartment cover
- Transmission: S tronic 6-speed
- PHEV hybrid drive system
- Electrically operated child safety lock
- 2-zone automatic climate control
- Comfort key without Safelock
- Front headrests
- Charging cable: Industrial plug CEE 16 A, 400 V, long and straight (mains connection cable (length 1.6 m) with industrial plug CEE 16 A, 3-phase, red, straight version)
- Steering wheel: Leather steering wheel in 3-spoke design with multifunction and paddle shifters
- Light and rain sensor
- Non-smoking version
- Tire pressure monitoring system
- Headlight
- 3-point automatic seat belts
- Seats: Rear seat backrest foldable
- Stationary air conditioning
- 12-volt power outlet in the rear
- Daytime running light
- Electronic immobilizer
- Airbag: Front side airbags with head airbag system and front interaction airbag
- Audi connect emergency call & service with Audi connect Remote & Control
- Electrically adjustable and heated exterior mirrors
- third brake light
- Digital instrument cluster - fully digital instrument cluster in 10.25 inches
- Rear parking sensors
- Electromechanical parking brake
- Electronic Differential Lock (EDS)
- EV button
- Electric windows front and rear
- front and rear floor mats
- Cruise control
- rear window wiper
- Interior lighting
- i-Size child seat attachment and top tether for the outer rear seats
- Rear headrests (3)
- AC Type 2 charging socket
- Charging cable: Mode 3 charging cable for public charging 11 kW (charging cable for charging at public AC charging stations (Type 2). The cable connects the charging station to the vehicle's AC charging port and enables a charging power of up to 3.6 kW at your vehicle.)
- Illuminated makeup mirror
- Otto particulate filter
- Tire repair kit
- Electromechanical power steering
- Seats: Standard front seats
- Lane Departure Warning
- Start-stop system
- 12V socket
- Glazing: Green tinted thermal insulation glazing



Extra equipment

- Airbags: Front and rear side airbags with head airbag system and front interaction airbag (The so-called interaction airbag deploys between the front seats, providing protection for the driver and front passenger occupants in the event of a side impact within the system's limits. In a side collision, this largely mitigates the impact between the two front occupants and the front passenger seat when driving alone, thus reducing the risk of injury.)
- ISOFIX child seat attachment at the front, Top Tether and i-Size for the outer rear seats (holding device for the practical attachment of i-Size and ISOFIX child seats on the front passenger seat and on the outer seats of the rear bench seat.)
- Steering wheel: Leather steering wheel in a 3-spoke design with multifunction plus and shift paddles (The steering wheel's height and reach are manually adjustable. For convenient operation of the extensive standard and optional infotainment features, the steering wheel is equipped with twelve multifunction buttons. Shift paddles allow manual gear changes.)
- Ambient lighting package (glove box lighting (incandescent bulb) - LED trunk lighting right - front/rear roof module, including reading lights (LED) - illuminated vanity mirrors (LED) - ambient door lighting front/rear (LED) - entry lights on the underside of the front doors (LED) - illuminated storage compartment in the center console (LED) - front footwell lighting (LED))
- Business package in conjunction with assistance package (USB ports with charging function in the rear - Audi connect Navigation & Infotainment plus - Audi phone box - Audi virtual cockpit plus - Audi Smartphone Interface - MMI Navigation plus with MMI touch - Cruise control)
- S line interior package (S tronic) (front sport seats with manual adjustment of seat height, seat fore/aft position, seat tilt, backrest tilt and seat belt height, as well as headrests; fabric Puls/mono.pur 550-K synthetic leather; 3-spoke leather steering wheel with multifunction plus and shift paddles including leather steering wheel grips; front and rear door armrests in synthetic leather; aluminum spectrum dark decorative inlays; illuminated front door sill trims with aluminum inlays and S lettering; black fabric headliner; front center armrest; stainless steel floor mats, pedals and footrest)
- Wheel: Alloy wheels - 17 inch - 5-parallel spokes (8.0 J × 17, tires 225/45 R 17)
- Seats: 4-way lumbar support (electrically adjustable, horizontally and vertically)
- Seats: Rear seat backrest foldable (three-part), with center armrest (split in a 40:20:40 ratio or fully foldable; with center armrest and cupholders)
- Front seat heating (heats seat and backrest center section (standard seats in fabric), otherwise seat and backrest center section as well as seat side bolsters - individually adjustable in 3 stages for driver and front passenger via direct selection button on the climate control unit)
- Phone: LTE support for Audi phone box
- Aluminum look in the interior (frame of the control button strip of the center console, door trim strips front and rear, elements on mirror adjustment buttons, window regulator buttons, control buttons for the parking brake and, if applicable, the hill start assist in aluminum look)
- Hold assist (holds the vehicle after stopping on inclines and declines typical in road traffic for an unlimited time).
- Interior mirror, automatically dimming, frameless
- Paint finish: Daytona Gray Pearl Effect
- LED headlights and LED taillights with dynamic turn signals (daytime running lights, low beam, high beam, position lights, turn signals, cornering lights, all-weather lights (to reduce glare in poor visibility conditions), motorway lights, static cornering lights, maneuvering lights (illumination of the maneuvering area at the front and sides when reversing), automatic dynamic headlight range control, intersection lights (in conjunction with MMI Nav. plus), dynamic rear turn signals, brake lights, tail lights, rear license plate lights, reversing lights)
- Storage and luggage compartment package (lockable glove compartment - storage compartment on driver's side - storage net on the back of the front seatbacks - comfort cupholder - 12-volt socket in the trunk - luggage compartment net - second luggage compartment light on the left in LED (only for A3 Sportback))
- Assistance package with MMI Navigation plus with MMI touch (Audi pre sense front (pedestrian and cyclist detection) - High-beam assistant - Parking assistant with parking aid plus - Adaptive cruise assistant (supports the driver with acceleration, braking, maintaining speed and distance, and lane keeping) - Emergency assistant - Efficiency assistant - Camera-based traffic sign recognition - MMI Navigation plus with MMI touch (10.1-inch color display, natural language interaction, Audi connect Navigation & Info.) - Adaptive cruise control)
- Panoramic glass roof (The glass element can be opened and closed electrically. The sunshades are operated just as conveniently. From the outside, the panoramic glass roof can also be operated using the remote key via comfort opening and closing. When open, the panoramic glass roof improves the interior climate through efficient ventilation. An integrated wind deflector reduces wind noise.)
- Seat covers in microfiber Dinamica/mono.pur 550 synthetic leather combination with S embossing (for front sport seats: - Seat center panels of the front seats and the two outer rear seats in microfiber Dinamica - Seat side bolsters, headrests, middle rear seat and front center armrest (if ordered) in mono.pur 550 synthetic leather - Contrast stitching and diamond quilting - S embossing in the backrests of the front seats)



- Glazing: Privacy glazing (tinted windows) (rear window, rear door and side windows tinted)

- Telephone: Audi Phone Box (universal Bluetooth interface - convenient, integrated hands-free system - coupling antenna for connecting the mobile phone to the external antenna for improved reception quality - reduced radiation in the vehicle interior - LTE support - charging option via USB port or wireless charging (Qi standard) - forget-to-use warning - charging status indicator in the MMI touch display - connection of a second mobile phone)

Brief expert findings

Documents submitted	At the time of the inspection, the vehicle registration certificate Part 2 (title) was available, but the vehicle registration certificate Part 1 (document) was not. (Copy)
VIN comparison	The vehicle identification number (VIN) was read from the vehicle and its conformity with the submitted documents was confirmed by the undersigned during the inspection.
Inspection	The inspection conditions were sufficient for the assessment of the vehicle. No lifting equipment or pit was available for inspecting the vehicle. Therefore, inspection of the vehicle's underside was only possible to a limited extent.
Test drive	No test drive/shunting maneuver was carried out during the inspection of the vehicle.
Engine function test	An engine test run was performed.

Value reducing factors

No.	Component group	Description
1	Equipment	Tirefit filler - Expired - Replace
2	Sill - left side	Sill - dent(s) - Smart repair
3	Rear bumper	Rear bumper - Scratch(es) - Smart repair
4	Trim / covers	Brightware / decorative strip - Paint defect - Smart repair
5	Front bumper	Front bumper - Scratch(es) - Paint

Wear and tear

No.	Component group	Description
1	Vehicle glazing	Windscreen with lane departure assistant - Stone chips - No deduction

The vehicle shows signs of wear and tear commensurate with its age and use.

Order/Scope of Order

An order was placed to prepare a sales report for the described vehicle. This report includes the following:

- Description of key vehicle information
- Documentation of equipment features
(*Delivery by third-party service providers*)
- Documentation of damage, defects, missing parts
- Documentation of prior damage, unrepaired prior damage, repainting
- A brief visual or functional inspection of the equipment details, if possible.
(*Functional testing of driver assistance systems is not included in the scope of services!*)
- a photographic documentation of the vehicle



Basis for the order

This product is based on the guidelines for vehicle returns and valuations published by Alphabet Fleet GmbH. The expert makes the specific findings in each individual case objectively, within the framework of the prescribed standards, based on their own expertise.

The vehicle inspection takes place in a fully assembled, unassembled state.

Damage or defects that can only be detected during disassembly/diagnostic work or through further investigation remain within the realm of prognostic risk. An increased risk exists due to concealed defects caused by fraudulent misrepresentation and which were not identifiable by the expert.

Damage or defects resulting from normal use or wear and tear of the vehicle will be accepted in accordance with the applicable standard.

There was no explicit identification or monetary consideration of the expected features within the product.

Features which, in their nature and extent, slightly exceed normal use but do not constitute unacceptable damage, will be documented and indicated as signs of wear, if applicable.

Damage or defects that, according to the applicable standard, can no longer be attributed to normal use or wear and tear are listed under "Value Reducing Factors" in the product description.

Depending on the product specification, a monetary ID can be provided. If this takes place, the costs can be 100% d or pro rata depending on the vehicle's age and mileage.

Previous damages

No apparent prior damage that had been repaired could be found on the vehicle.

Comments

- Die Unterbodenbesichtigung war nur ebenerdig & eingeschränkt möglich. Mehrkosten möglich.
- Winterradsatz ist kein Bestandteil des Auslieferungsumfangs.



Figure 1: Diagonal front (left)



Figure 2: Diagonal front (right)



Figure 3: Diagonal rear (left)



Figure 4: Diagonal rear (right)



Figure 5: Interior - front



Figure 6: Interior - rear



Figure 7: Instrument cluster



Figure 8: Instrument panel



Figure 9: Interior 360° view



Figure 10: Cargo area

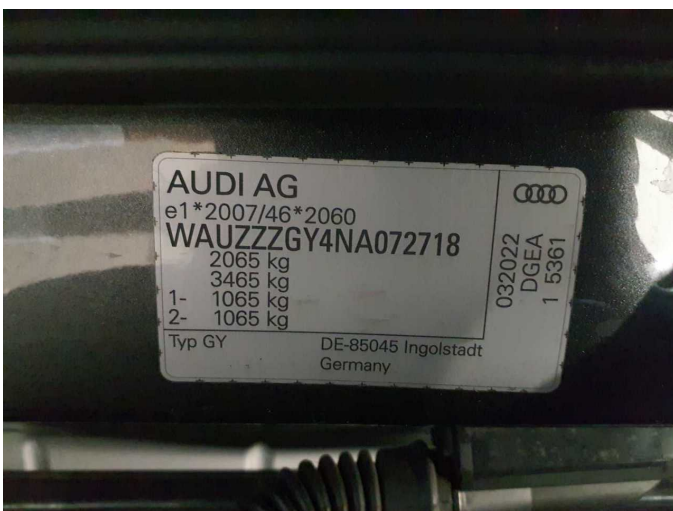


Figure 11: VIN



Figure 12: Mounted tyres



Figure 13: Documents

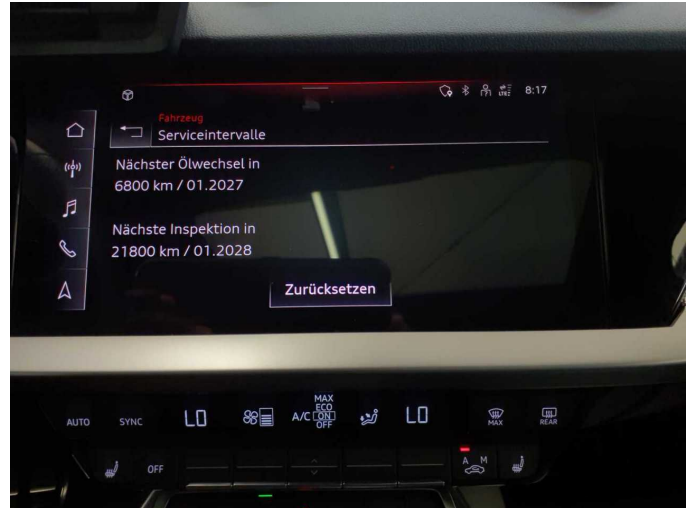


Figure 14: Documents



Figure 15: Documents



Figure 16: Additional tyres

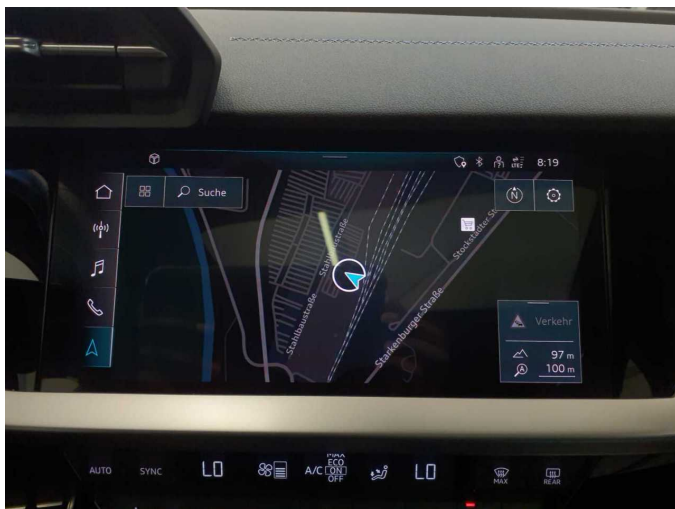


Figure 17: Navigation



Figure 18: Misc.



Figure 19: Misc.



Figure 20: Misc.



Figure 21: Misc.



Figure 22: Misc.



Figure 23: Misc.



Figure 24: Misc.

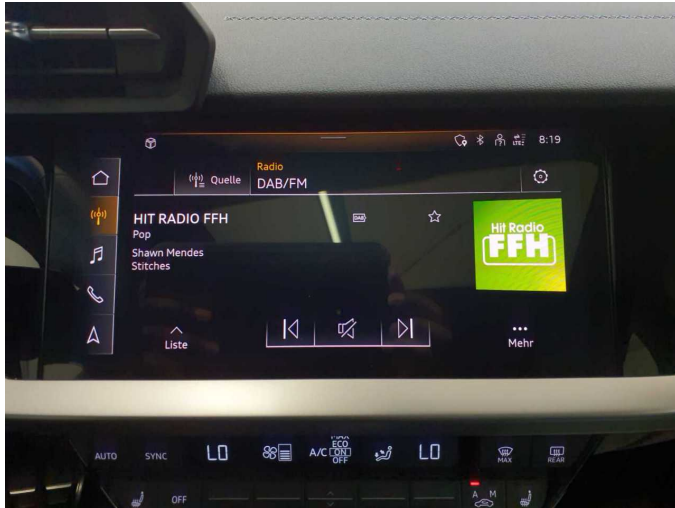


Figure 25: Misc.



Figure 26: Misc.



Figure 27: Misc.

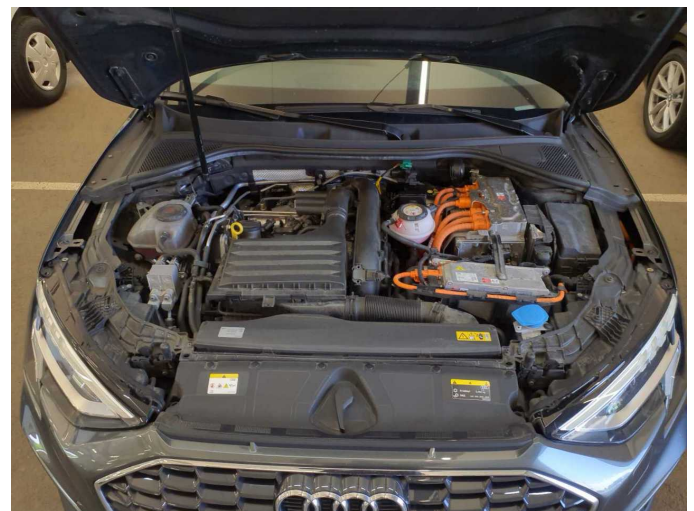


Figure 28: Misc.

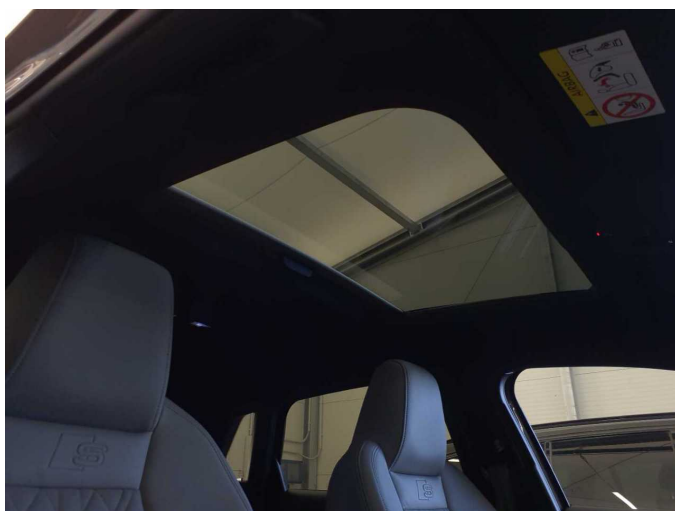


Figure 29: Misc.

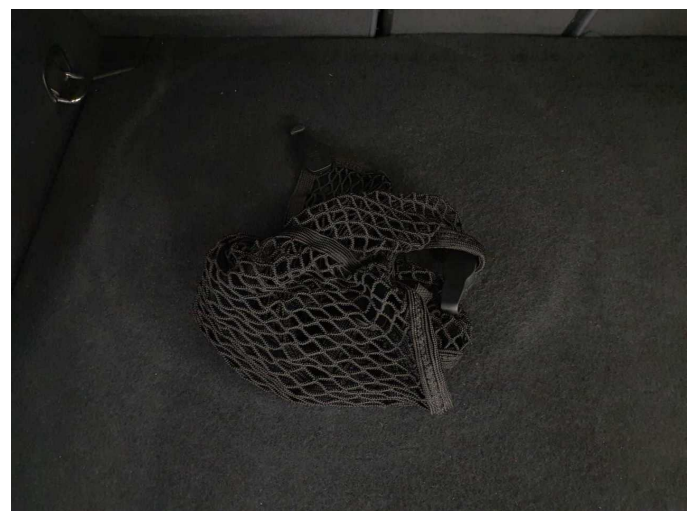


Figure 30: Misc.



Figure 31: Misc.



Figure 32: Misc.

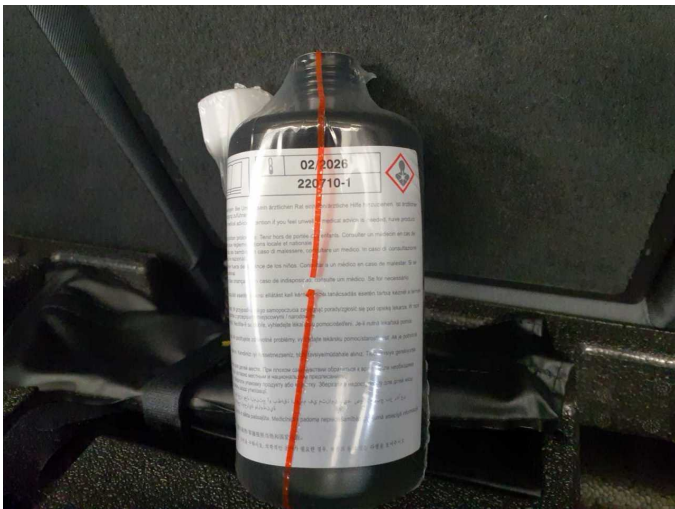


Figure 33: Misc.



Figure 34: Misc.



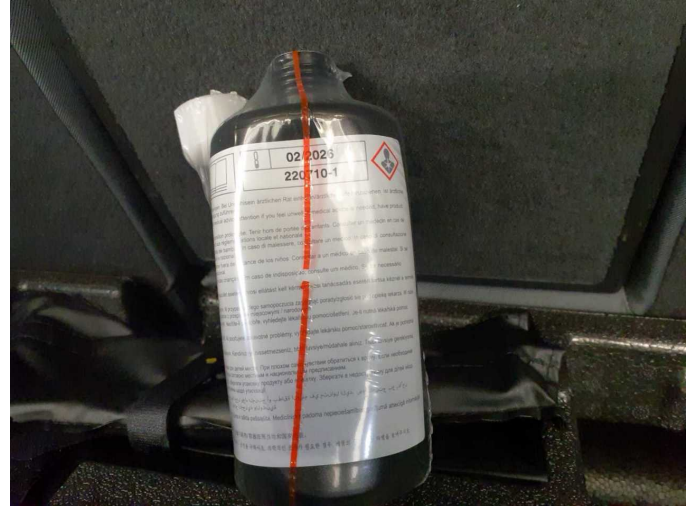
Figure 35: Misc.



Figure 36: Misc.



Figure 37: Misc.



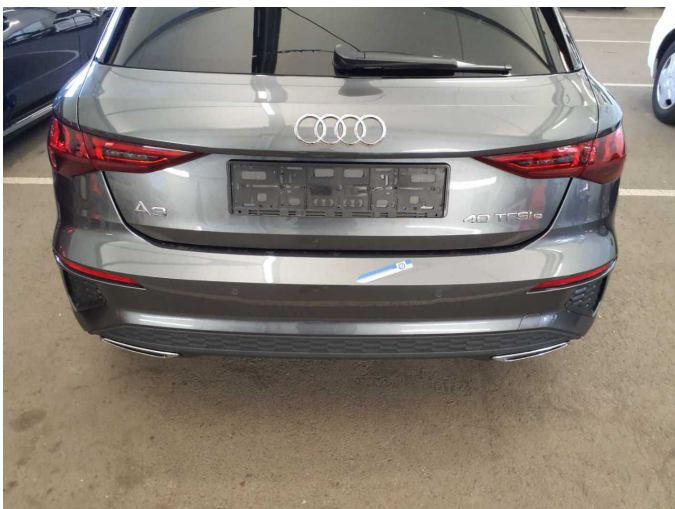
Damage 1: Equipment: Tirefit filler - Expired - Replace



Damage 2: Sill - left side: Sill - dent(s) - Smart repair



Damage 2: Sill - left side: Sill - dent(s) - Smart repair



Damage 3: Rear bumper: Rear bumper - Scratch(es) - Smart repair



Damage 3: Rear bumper: Rear bumper - Scratch(es) - Smart repair



Damage 4: Trim / covers: Brightware / decorative strip - Paint defect - Smart repair



Damage 4: Trim / covers: Brightware / decorative strip - Paint defect - Smart repair



Damage 5: Front bumper: Front bumper - Scratch(es) - Paint



Damage 5: Front bumper: Front bumper - Scratch(es) - Paint



Damage 5: Front bumper: Front bumper - Scratch(es) - Paint



Damage 5: Front bumper: Front bumper - Scratch(es) - Paint



Wartungshistorie

(gemäß Auftraggeber Informationen)

Fahrgestellnummer: WAUZZZGY4NA072718
Hersteller / Modell: AUDI AUDI A3 40 TFSIe Sportback S tronic S line

Datum	KM-Stand	Beschreibung
02.02.2026	89.070	Luftfiltereinsatz ern; Motoröl b. Wartung; Ölfilter ern; Regelwartungsdienst; Wartung Sonstiges
24.04.2025	72.525	AU
13.12.2024	60.015	Getriebeöl ern/prüfen; Motoröl b. Wartung; Ölfilter ern; Regelwartungsdienst; Wartung Sonstiges; Zündkerzen ern
30.04.2024	45.815	Bremsflüssigkeit; Bremsflüssigkeit ern; Motoröl b. Wartung; Ölfilter ern; Ölwechsel; Wartung Sonstiges
27.07.2023	30.180	Motoröl b. Wartung; Ölfilter ern; Regelwartungsdienst; Wartung Sonstiges
16.12.2022	14.979	Motoröl b. Wartung; Ölfilter ern; Ölwechsel; Wartung Sonstiges