

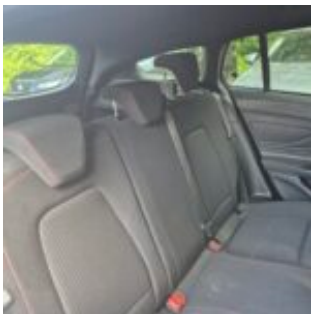
## 2-DKL-558

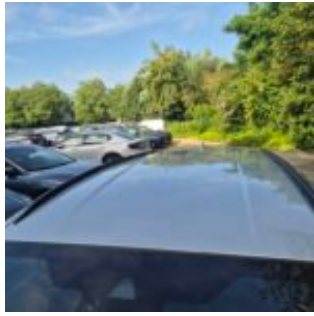
2-DKL-558 · ST-line 125pk 92kw mHEV M6 Clipper · 22 June 2026 · Zaventem (BE)

### Specifications

License Plate Number	2-DKL-558	Fuel Type	Hybrid Gasoline
Manufacturer	FORD	VIN	WF0PXXGCHPPD60827
Model	Focus	Cylinder Capacity	999 <sup>cm<sup>3</sup></sup>
Model Versions	ST-line 125pk 92kw mHEV M6 Clipper	Transmission Type	Handmatig geschakelde transmissie
Body Type	5 door hatchback	First Admission	06-04-2023
Color	Silver	Odometer	73.335 <sup>km</sup>
Paint Type	Metallic	Numer Of Keys	2
Production Year	2023	Interior	Black
KW	92	Number Headrests	5

Images





## Accessories

ABS

Airbags

Alloy wheels

Audio System

Automatic air conditioning

Bluetooth car kit

Central door locking

Centre armrest

Cruise control

Electric rear windows

Electric windows front

Electrically adjustable exterior mirrors

Front & rear parking sensors

Leather steering wheel

Navigation system

Seat heating

Steering wheel multifunction

Steeringwheel - Heated

Windscreen - Heated

## Condition

Condition exterior Adequate

Condition interior Adequate

Last Maintenance Unknown

Previous Repairs Unknown

## Tire Specifications

Tire	Profile	Brand	Width	Aspect Ratio	Radial	Type
Front Left	3 <sup>mm</sup>	Goodyear	215 <sup>mm</sup>	50 <sup>mm</sup>	17 <sup>inch</sup>	All Season
Rear Left	3 <sup>mm</sup>	Goodyear	215 <sup>mm</sup>	50 <sup>mm</sup>	17 <sup>inch</sup>	All Season
Front Right	3 <sup>mm</sup>	Goodyear	215 <sup>mm</sup>	50 <sup>mm</sup>	17 <sup>inch</sup>	All Season
Rear Right	3 <sup>mm</sup>	Goodyear	215 <sup>mm</sup>	50 <sup>mm</sup>	17 <sup>inch</sup>	All Season
Spare Tire Type	Compressor					

## Damages



Damage Part  
Fender - Front Left



Damage Type  
Scratch(es)

Repair Type  
Spray

Acceptable  
No



Damage Part  
Hood



Damage Type  
Stonechipping

Repair Type  
Acceptable

Acceptable  
Yes



Damage Part  
Alloy - Right Front



Damage Type  
Damaged

Repair Type  
Acceptable

Acceptable  
Yes



Damage Part  
Frontdoor - Right



Damage Type  
Door-edge chipped

Repair Type  
Acceptable

Acceptable  
Yes



Damage Part  
Alloy - Right Rear



Damage Type  
Damaged

Repair Type  
Rim repair

Acceptable  
No



Damage Part  
Fender - Rear Right



Damage Type  
Scratch(es)



Repair Type  
Spray

Acceptable  
No



Damage Part

Tailgate



Damage Type

Small dent(s)

Repair Type

Restyle

Acceptable

No



Damage Part

Bumper - Rear



Damage Type

Scratch(es)



Repair Type

Spray

Acceptable

No



Damage Part

Roof



Damage Type

Small dent(s)



Repair Type

Restyle

Acceptable

No



Damage Part

Trunkshelf



Damage Type

Missing

Repair Type

Replace

Acceptable

No



Damage Part

Skirt - Left



Damage Type

Small dent(s)

Repair Type

Restyle

Acceptable

No



Damage Part

Interior



Damage Type

Stains & dirt

Repair Type

Cleaning

Acceptable

No