

Expertise

Protocol number: 46137759
Order No. / Reference: 26488547
Inspection date: 24 Jun 2026

Manufacturer: Polestar

Model: 2 Single Motor 78kWh

VIN: YSMVSEGEXPL153920



Vehicle details

Manufacturer / Type / Model / Equipment

Polestar 2 Single Motor 78kWh

Vehicle Identification number YSMVSEGEXPL153920

Mileage (Read) 87,353 km

First registration 18 Apr 2023

Number of holders 1

Next periodical technical inspection 04/2028
(Report on hand)

Power / Engine displacement 80 kw / 0 ccm

Fuel type / Cylinder Electric / 0

Gearbox / Number of gears Direct drive / 1

Type of drive Front drive

Type of vehicle Saloon car

Colour / colour code Thunder Metallic

Doors / Seats 5 / 5

Upholstery type Cloth

Colour of upholstery Anthracite-Black



Vehicle details

Maintenance booklet / proof	digital proof / complete	Next maintenance in	4,439 km
Last service on / at	07/2025 at 61,792 km		
Key is / should be	2 / 2	FZG documents	ZB#2 (B) was available (copy), ZB#1 (S) was not available.
		Letter No.	GQ220611
Previous damage / Accident	Detectable	Repainting	None detectable
Inspection conditions	sufficient	Lifting equipment / pit	No
Test drive	Not performed	Engine function test	Performed
Manufacturer key number/ type code number	2219 / AAB 00001		
Emission standard	2017/1151;WLTP;reine Elektrofz	fine dust sticker	
Permitted total weight	2,490 kg	Empty weight	

Tyres

Mounted tyres

#	Tyre size	Type of tyre	Manufacturer	Tread depth
1)	245/45 R19 102V	Summer tyres on Light alloy	Michelin	7mm / 7mm
2)	245/45 R19 102V	Summer tyres on Light alloy	Michelin	7mm / 7mm

Additional tyres

#	Tyre size	Type of tyre	Manufacturer	Tread depth
1)	245/45 R19 102V	Winter tyres (Without wheel rim)	Goodyear	6mm / 6mm
2)	245/45 R19 102V	Winter tyres (Without wheel rim)	Goodyear	6mm / 6mm

Replacement

Typ	Tyre size	Type of tyre	Manufacturer	Tread depth
	Tirefit	Expiration date 01/2027		

Legend: Tread depth information for the left tire is listed first, for the right tire it is listed second on the axle in the direction of travel.

TÜV SÜD Auto Partner GmbH
Wiesenring 2
04159 Leipzig

Inspection location
ARS Altmann AG Automobillogistik
Römerstraße 3
64560 Riedstadt



Equipment



Standard equipment

- 12V socket in the trunk
- Acoustic Vehicle Alert System - AVAS
- Airbags: Head/shoulder airbags
- Airbags: SIPS side airbags (including inner side)
- Armrest with cup holder and storage compartment
- Automatic braking after a collision
- Back window, heater
- Charging cable (7 meters) for normal sockets (10A 2.3kW - Schuko plug, Type 2, Mode 2)
- Collision avoidance and mitigation (with braking and steering support - vehicle, cyclist and pedestrian detection)
- Connected Safety (Connected Safety transmits information between your vehicle and other vehicles via the internet. This function can inform the driver if another vehicle on the current route has activated its hazard warning lights or has detected slippery road conditions. Connected Safety communication only works between vehicles equipped with this function and in which it is activated.)
- Electronic Stability Control (ESC) and traction control
- Frameless, electrically adjustable exterior mirrors (automatically dimming exterior mirrors)
- Front storage compartment 41 liters
- Integrated eSIM (with constant internet connectivity)
- Interior rearview mirror with automatic dimming function
- ISOFIX attachment for front passenger seat and outer rear seats
- Keyless opening and starting (remote control for central locking including charging flap - electrically operated trunk lid with extra-wide foot sensor)
- One pedal drive (regenerative braking)
- Polestar Connect (Thanks to Polestar Connect, the driver can communicate with the Polestar 2. For example, the Polestar Connect app allows the driver to switch on the climate control without entering the passenger compartment. The vehicle has buttons for making breakdown or emergency calls. In the event of an accident, the Polestar 2 even automatically makes an emergency call and a call if it is stolen.)
- Rear lights, Full-LED (Full LED rear light with persistent light signature - automatically dimming)
- Rear view camera
- Seats: Semi-electric seats, front (driver's seat memory - lumbar support, front - 4-way electrically adjustable)
- Seats: Split and foldable rear bench seat (40/60)
- Steering wheel: Multifunction steering wheel, height and reach adjustable
- Textile floor mats
- third brake light
- Traffic Sign Information (RSI) (Using a camera or information from the Sensus navigation system, it provides information on speed limits, no-overtaking zones, one-way streets and various supplementary signs. The traffic sign is displayed on the speedometer or in the head-up display.)
- 2 USB ports on the back
- 2 USB ports on the front
- Airbags, driver and front passenger (passenger airbag, deactivatable)
- Alarm system (double locking - Alarm inclination sensor and motion sensor)
- Automatic headlight range control
- Automatically folding exterior mirrors
- Bluetooth
- Charging cable (6 meters) (16A 11kW - Type 2, Mode 3)
- CleanZone (cabin air filter)
- Driver Alert Control
- Driver display 12.3" (progressive digital display)
- ECC 2-zone air conditioning
- Electric child safety lock
- Electric parking brake (with auto-hold function)
- Electric tailgate with soft closing
- electric window regulator
- First aid kit
- Forward Collision Warning
- Front and rear headrests
- Front and rear parking assist
- Hexagonal gear selector with illuminated Polestar symbol
- Hill start assist
- Immobiliser
- Indirect tire pressure monitoring
- Infotainment powered by Android (incl. Google Assistant, Google Maps, Google Play Store -Google service connectivity -Over-the-air (OTA) updates for life)
- Lane Keeping Assist (LKA) (The lane keeping assist steers the vehicle back into the lane and/or warns the driver with steering wheel vibrations.)
- Large, vertical display with touchscreen (11, 15")
- LED headlights, adaptive (Thor's Hammer daytime running lights)
- Navigation system
- Polestar Digital Key
- Radio accessories: Digital radio DAB+
- Rain sensor
- Seat belts (warning for unfastened seat belts, belt tensioners in the front and on the outer rear seats)
- Seats: Front seats with seat heating
- Servotronic
- Speed limiter and cruise control
- Tire repair kit
- Upholstery: embossed fabric with 3D etched decor
- Vehicle Deceleration Control (ABS, Electronic Brake Distribution and Emergency Brake Assist)
- Wheels: 19" alloy wheels with 5 V-spokes, black, diamond cut (with tires 245/45 R19 on 8Jx19 ET50 front, 9Jx19 ET53 rear)



- Transmission: Direct drive

- Whiplash protection system (In the event of a collision, the backrest and headrest of the front seat move as a unit with the occupant to support their neck.)

Extra equipment

- Package: Plus (Panoramic glass roof with projected Polestar logo, heat pump, WeaveTech seats - Black Ash decor, electrically adjustable front seats with 4-way power lumbar support (memory for driver's seat), leg rest and storage nets in the backrest, heated rear seats, steering wheel and windshield washer nozzles, high-level interior lighting, Harman Kardon premium sound system with 13 speakers, 15W wireless smartphone charging, bag holders, tinted rear window, air quality)
- Package: Pilot Little (Pilot Assist: keeps the vehicle in the center of the lane by intervening in the steering - Blind Spot Information system with steer assist - Adaptive Cruise Control - Cross Traffic Alert with brake support - Rear Collision Warning & Mitigation - Emergency Stop Assist - 360° camera - Side parking aid - LED front fog lights - Automatically dimming exterior mirrors)
- Paint finish: Metallic

Brief expert findings

Documents submitted	At the time of the inspection, the vehicle registration certificate Part 2 (title) was available, but the vehicle registration certificate Part 1 (document) was not. (Copy)
VIN comparison	The vehicle identification number (VIN) was read from the vehicle and its conformity with the submitted documents was confirmed by the undersigned during the inspection.
Inspection	The inspection conditions were sufficient for the assessment of the vehicle. No lifting equipment or pit was available for inspecting the vehicle. Therefore, inspection of the vehicle's underside was only possible to a limited extent.
Test drive	No test drive/shunting maneuver was carried out during the inspection of the vehicle.
Engine function test	An engine test run was performed.

Value reducing factors

No.	Component group	Description
1	Misc.	Inspection / maintenance (1. Inspektion 3 Monate überzogen) - No evidence - No deduction
2	Door - rear left side	Door - Scratch(es) - Smart repair
3	Wheel / tyres	Alloy rim - rear right side (Materialabtrag) - Scratched - Replace
4	Body	Body - Damage by hail - repair according to calculation

Wear and tear

No.	Component group	Description
1	Front bumper	Front bumper - Stone chips - No deduction
2	Vehicle glazing	Windscreen - Stone chips - No deduction

The vehicle shows signs of wear and tear commensurate with its age and use.

Previous damages

No.	Previous damage	Extent of damage (Net)
1	Roof, Front, Rear, Provided by user / customer, from 12 May 2026	5.280,73 €



Order/Scope of Order

An order was placed to prepare a sales report for the described vehicle. This report includes the following:

- Description of key vehicle information
- Documentation of equipment features
(Delivery by third-party service providers)
- Documentation of damage, defects, missing parts
- Documentation of prior damage, unrepaired prior damage, repainting
- A brief visual or functional inspection of the equipment details, if possible.
(Functional testing of driver assistance systems is not included in the scope of services!)
- a photographic documentation of the vehicle

Basis for the order

This product is based on the guidelines for vehicle returns and valuations published by Alphabet Fleet GmbH. The expert makes the specific findings in each individual case objectively, within the framework of the prescribed standards, based on their own expertise.

The vehicle inspection takes place in a fully assembled, unassembled state.

Damage or defects that can only be detected during disassembly/diagnostic work or through further investigation remain within the realm of prognostic risk. An increased risk exists due to concealed defects caused by fraudulent misrepresentation and which were not identifiable by the expert.

Damage or defects resulting from normal use or wear and tear of the vehicle will be accepted in accordance with the applicable standard.

There was no explicit identification or monetary consideration of the expected features within the product.

Features which, in their nature and extent, slightly exceed normal use but do not constitute unacceptable damage, will be documented and indicated as signs of wear, if applicable.

Damage or defects that, according to the applicable standard, can no longer be attributed to normal use or wear and tear are listed under "Value Reducing Factors" in the product description.

Depending on the product specification, a monetary ID can be provided. If this takes place, the costs can be 100% d or pro rata depending on the vehicle's age and mileage.

Previous damages

According to available information previous damages were repaired at the vehicle. Traces of repairs, which allow conclusions about the area of repair, were not recognizable during the inspection.

Comments

- Die Unterbodenbesichtigung war nur ebenerdig & eingeschränkt möglich. Mehrkosten möglich.

- Winterreifensatz ist kein Bestandteil des Auslieferungsumfangs.



Figure 1: Diagonal front (left)



Figure 2: Diagonal front (right)



Figure 3: Diagonal rear (left)



Figure 4: Diagonal rear (right)

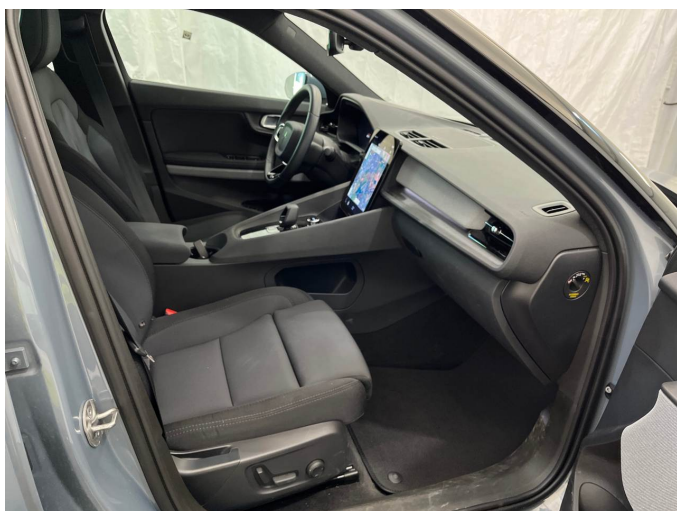


Figure 5: Interior - front



Figure 6: Interior - rear



Figure 7: Instrument cluster



Figure 8: Instrument panel

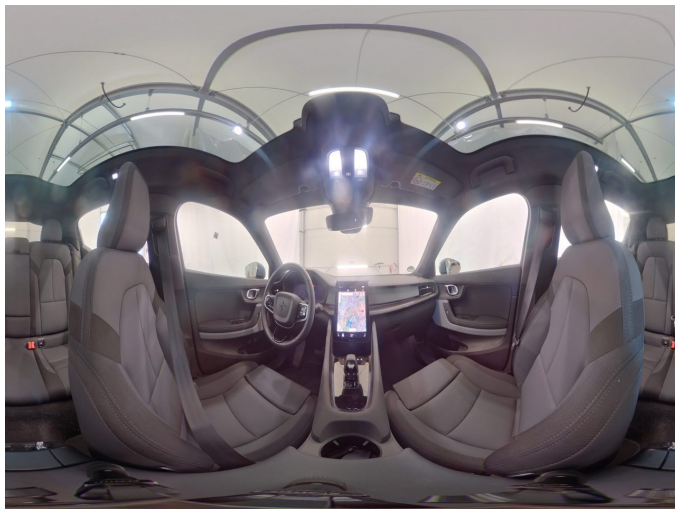


Figure 9: Interior 360° view



Figure 10: Cargo area



Figure 11: VIN



Figure 12: Mounted tyres



Figure 13: Documents

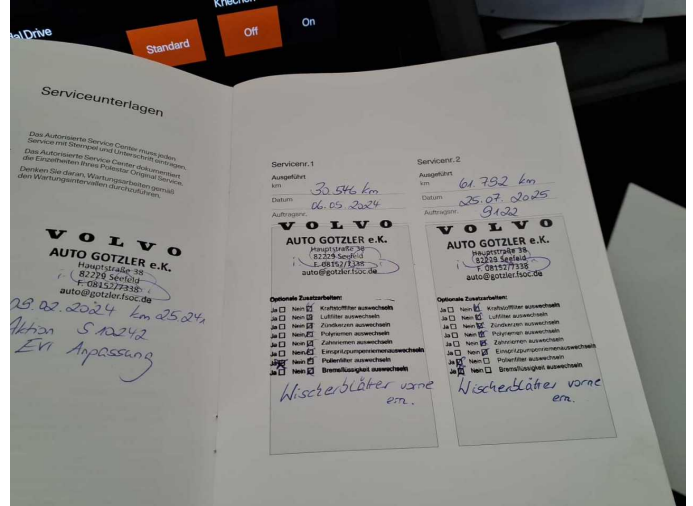


Figure 14: Documents

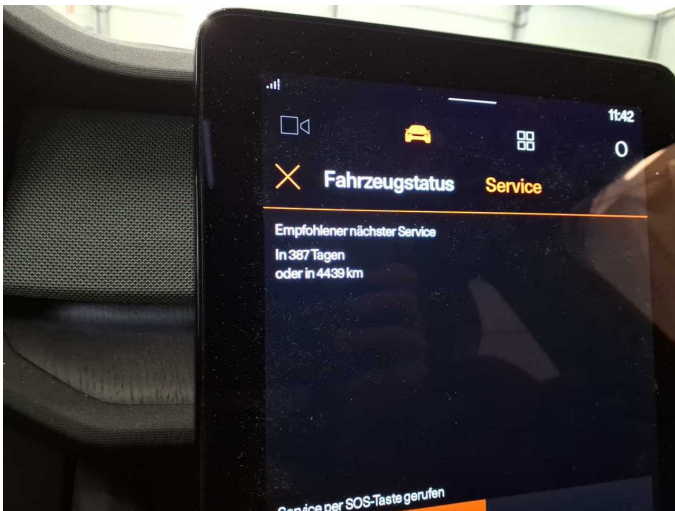


Figure 15: Documents



Figure 16: Additional tyres

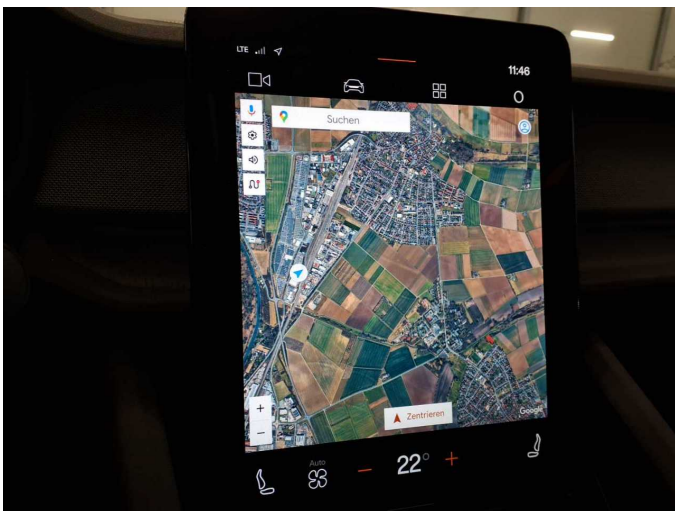


Figure 17: Navigation

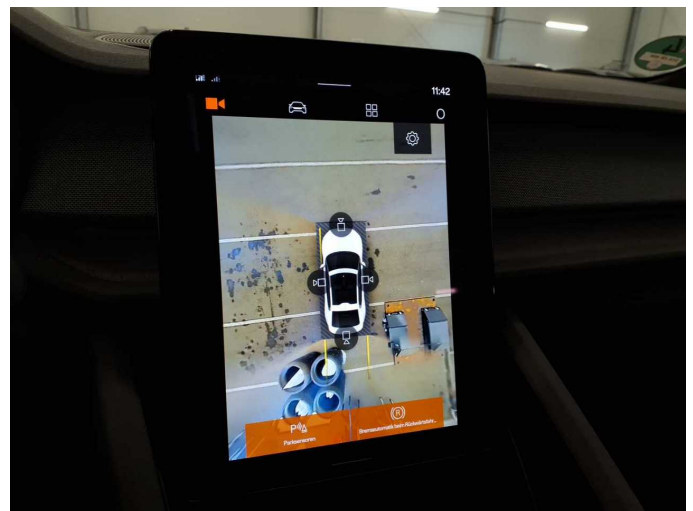


Figure 18: Misc.



Figure 19: Misc.



Figure 20: Misc.



Figure 21: Misc.



Figure 22: Misc.



Figure 23: Misc.



Figure 24: Misc.



Figure 25: Misc.



Figure 26: Misc.



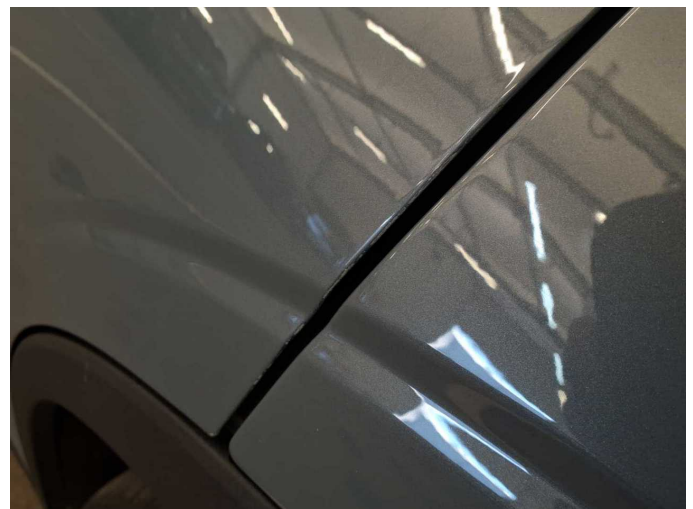
Figure 27: Misc.



Figure 28: Misc.



Damage 2: Door - rear left side: Door - Scratch(es) - Smart repair



Damage 2: Door - rear left side: Door - Scratch(es) - Smart repair



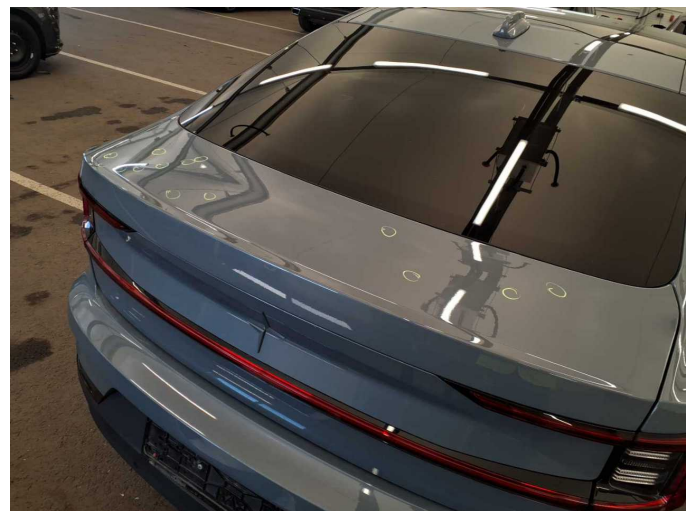
Damage 3: Wheel / tyres: Alloy rim - rear right side (Materialabtrag) - Scratched - Replace



Damage 3: Wheel / tyres: Alloy rim - rear right side (Materialabtrag) - Scratched - Replace



Damage 3: Wheel / tyres: Alloy rim - rear right side (Materialabtrag) - Scratched - Replace



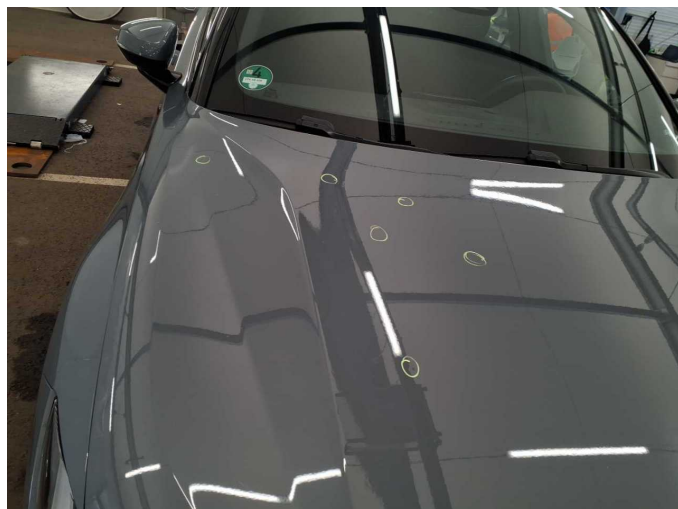
Damage 4: Body: Body - Damage by hail - repair according to calculation



Damage 4: Body: Body - Damage by hail - repair according to calculation



Damage 4: Body: Body - Damage by hail - repair according to calculation



Damage 4: Body: Body - Damage by hail - repair according to calculation

Damage 4: Body: Body - Damage by hail - repair according to calculation



Wartungshistorie

(gemäß Auftraggeber Informationen)

Fahrgestellnummer: YSMVSEGEXPL153920

Hersteller / Modell: POLESTAR POLESTAR Polestar 2 Single Motor 78kWh

Datum	KM-Stand	Beschreibung
25.07.2025	61.792	Bremsflüssigkeit; Bremsflüssigkeit ern; Regelwartungsdienst; Systemtest/ Eigendiagnose; Wartung Sonstiges