

Expertise

Protocol number: 45876909
Order No. / Reference: 26368091
Inspection date: 9 Jun 2026

Manufacturer: Volkswagen

Model: Tiguan Allspace 2.0 TDI SCR 4Motion DSG UNITED

VIN: WVGZZZ5NZMM138989



Vehicle details

Manufacturer / Type / Model / Equipment

Volkswagen Tiguan Allspace 2.0 TDI SCR 4Motion DSG UNITED

Vehicle Identification number WVGZZZ5NZMM138989

Mileage (Read) 130,740 km

First registration 13 Sept 2021

Number of holders 1

Power / Engine displacement 147 kw / 1,968 ccm

Fuel type / Cylinder Diesel / 4

Gearbox / Number of gears Automatic / 7

Type of drive All-wheel drive

Type of vehicle SUV

Colour / colour code Atlantic Blue Metallic

Doors / Seats 5 / 7

Upholstery type Cloth

Colour of upholstery Black-Anthracite



Vehicle details			
Maintenance booklet / proof	digital proof / complete	Next maintenance in	20,300 km
Last service on / at	12/2025 at 120,952 km		
Key is / should be	2 / 2	FZG documents	ZB#2 (B) was available (copy), ZB#1 (S) was not available.
		Letter No.	GC427781
Previous damage / Accident	None detectable	Repainting	Detectable
Inspection conditions	sufficient	Lifting equipment / pit	No
Test drive	Not performed	Engine function test	Performed
Manufacturer key number/ type code number	0603 / CLD 01885		
Emission standard	EURO6;WLTP;AP;PI/CI; M, N1 I	fine dust sticker	
Permitted total weight	2,390 kg	Empty weight	

Tyres

Mounted tyres				
#	Tyre size	Type of tyre	Manufacturer	Tread depth
1)	235/55 R18 100V	Summer tyres on Light alloy	Semperit	7mm / 7mm
2)	235/55 R18 100V	Summer tyres on Light alloy	Pirelli	4mm / 4mm
Additional tyres				
#	Tyre size	Type of tyre	Manufacturer	Tread depth
1)	215/65 R17 99H	Winter tyres on Steel rim with wheel cover	Pirelli	6mm / 6mm
2)	215/65 R17 99H	Winter tyres on Steel rim with wheel cover	Pirelli	6mm / 6mm
Replacement				
Typ	Tyre size	Type of tyre	Manufacturer	Tread depth
	Tirefit	Expiration date 12/2024		

Legend: Tread depth information for the left tire is listed first, for the right tire it is listed second on the axle in the direction of travel.

TÜV SÜD Auto Partner GmbH
Wiesenring 2
04159 Leipzig

Inspection location
Hartmann Fleet Professionals GmbH
Leerenstraße 25
29683 Bad Fallingbommel



Equipment



Standard equipment

- 2 USB-C ports on the front
- Airbag for driver and front passenger including knee airbag on the driver's side
- Ambient lighting (single color), integrated into the door decors
- App-Connect including App-Connect Wireless for Apple CarPlay and Android Auto
- Hill descent control
- Chrome applications on mirror adjustment switches, window regulator switches, door pull handles
- Decorative inlays for special model
- Dual-tone signal horn
- Door sill trims for special edition model
- Electronic Stability Program with counter-steering support
- Driving profile selection
- Electric windows front and rear
- Windscreen made of laminated safety glass, heat and sound insulating
- Luggage compartment lighting
- Transmission: 7-speed DSG
- Halogen dual headlights and indicator lights under a common clear glass cover
- Interior mirror automatically dimming
- Air conditioning system "Air Care Climatronic"
- Rear headrests (3)
- Front headrests
- LED reading lights, 2 in the front and 2 in the rear
- Light in the front footwell
- Manual headlight range adjustment
- Multifunction display "Premium"
- Navigation system "Discover Media" incl. "Streaming & Internet"
- Emergency braking assistant "Front Assist"
- Upholstery: Cloth
- Radio
- Radio accessories: Digital radio reception DAB+
- Tire pressure monitoring system
- Wheels: Tires 215/65 R 17, optimized for low rolling resistance
- Gearshift knob in leather
- Front windshield washer nozzles automatically heated
- Power steering
- Seats: Folding tables on the backs of the front seats
- Seats: Comfort seats in the front
- Seats: Rear bench seat asymmetrically split
- Seats: Front seats with height adjustment
- Lane keeping assistant "Lane Assist"
- 12-volt socket
- Textile floor mats front and rear
- Traffic sign recognition
- Central locking without safe locking, with remote control and 2 remote keys
- Storage compartments in the overhead console
- Airbag, head airbag system including front side airbags
- Permanent 4MOTION all-wheel drive
- Extended warranty, 3 years following the manufacturer's warranty, maximum total mileage 50,000 km
- Aspherical exterior mirror on driver's side
- Exterior mirror housings painted silver
- third brake light
- Chrome trim on the side windows
- Silver anodized roof rails
- Diesel particulate filter
- Parking assistance
- Electronic parking brake including auto-hold function
- Automatic headlight control, with LED daytime running lights
- High beam control Light Assist
- Pedestrian detection
- Luggage compartment cover
- Luggage compartment lid with electric opening and closing
- Rear window heated
- Rear window wiper with intermittent function
- LED license plate lighting
- Combination instrument cluster with electronic speedometer
- Paint finish: Solid
- Steering wheel: Multifunction steering wheel in leather, with paddle shifters
- front center armrest
- Fatigue detection
- Fog lights and cornering lights
- Non-smoking version
- Emergency call service
- Proactive occupant protection system in conjunction with "Front Assist"
- Rain sensor
- Wheels: Light alloy (4) "Dublin" 7 J x 17, in black, polished surface
- Wheels: Tire Mobility Set
- Windows: Rear side windows and rear window tinted
- Headlight cleaning system
- Seat belts: Three-point automatic seat belts at the front with height adjustment and belt tensioner
- Seats: Lumbar support in the front
- Seats: Heated front seats
- Voice control
- Start-stop system with brake energy recuperation
- Bumpers in body color
- First aid kit, warning triangle and high-visibility vest
- Electronic immobilizer



Extra equipment

- Foldable towbar (electric release)
- Wirelessly heated windshield (laminated safety glass windshield, wirelessly heated and infrared-reflecting)
- Package: "Plus" package for special models (black exterior mirror housings - black headliner - Digital Cockpit Pro, multicolor, various info profiles selectable - "Comfort" telephone interface with inductive charging function, hands-free system and Bluetooth audio)
- Seats: 2 individual seats in the 3rd row (2 seats in the 3rd row, including rear bench seat and backrest asymmetrically split and foldable, with center armrest - luggage compartment floor with storage compartment)
- Extended warranty, cancellation
- Paint finish: Metallic
- Mesh partition
- Package: Mirror package (electrically adjustable, folding and heated exterior mirrors with passenger-side mirror lowering function - automatically dimming interior mirror)
- Wheels: Light alloy (4) "Nice" 7 J x 18
- Wheels: Winter wheels (4) (additional), steel, 6.5 J x 17 (AirStop winter tires 215/65 R 17 H - on-board tools and jack)

Brief expert findings

Documents submitted	At the time of the inspection, the vehicle registration certificate Part 2 (title) was available, but the vehicle registration certificate Part 1 (document) was not. (Copy)
VIN comparison	The vehicle identification number (VIN) was read from the vehicle and its conformity with the submitted documents was confirmed by the undersigned during the inspection.
Inspection	The inspection conditions were sufficient for the assessment of the vehicle. No lifting equipment or pit was available for inspecting the vehicle. Therefore, inspection of the vehicle's underside was only possible to a limited extent.
Test drive	No test drive/shunting maneuver was carried out during the inspection of the vehicle.
Engine function test	An engine test run was performed.

Value reducing factors

No.	Component group	Description
1	Equipment	Tirefit filler - Expired - Replace
2	Door - rear left side	Door edge - Scratch(es) - Smart repair
3	Door - rear right side	Door edge - Scratch(es) - Smart repair
4	Door - front right side	Door edge - Scratch(es) - Smart repair
5	Side panel - rear left side	Side panel - dent(s) - Smooth repair work
6	Front bumper	Front bumper - Scratch(es) - Smart repair
7	Wheel / tyres	Alloy rim - front left side - Scratch(es) - Loss in value
8	Door - front left side	Door - Dent / paintcoat damage - Smart repair
9	Door - front left side	Brightware - lower (Kunststoffleiste) - Scratch(es) - Replace
10	Side panel - rear right side	Wheel arch - Scratch(es) - Replace
11	Wing mirror - right side	Cap - Scratch(es) - Replace
12	Rear bumper	Rear bumper - Scratch(es) - Paint
13	Front bumper	Front bumper (Unterteil) - Scratch(es) - Replace
14	Boot lid / rear door	Boot lid - Dent / paintcoat damage - Repair and paint
15	Mudguard - right side	Mudguard - right side - Scratch(es) - Paint



Wear and tear

No.	Component group	Description
1	Vehicle glazing	Windscreen - Stone chips - No deduction
2	Bonnet	Bonnet - Stone chips - No deduction
3	Documents	Service book (Digitaler Ausdruck) - Missing - No deduction

The vehicle shows signs of wear and tear commensurate with its age and use.

Repainting

No. Repainting

- 1 Mudguard - right side, Door - front right side, Professionally carried out, Invoice of repair done Non-existent

Paint coat thickness measurement

Mudguard - right side	200 µm	Door - front right side	206 µm
-----------------------	--------	-------------------------	--------

Order/Scope of Order

An order was placed to prepare a sales report for the described vehicle. This report includes the following:

- Description of key vehicle information
- Documentation of equipment features
(*Delivery by third-party service providers*)
- Documentation of damage, defects, missing parts
- Documentation of prior damage, unrepaired prior damage, repainting
- A brief visual or functional inspection of the equipment details, if possible.
(*Functional testing of driver assistance systems is not included in the scope of services!*)
- a photographic documentation of the vehicle

Basis for the order

This product is based on the guidelines for vehicle returns and valuations published by Alphabet Fleet GmbH. The expert makes the specific findings in each individual case objectively, within the framework of the prescribed standards, based on their own expertise.

The vehicle inspection takes place in a fully assembled, unassembled state.

Damage or defects that can only be detected during disassembly/diagnostic work or through further investigation remain within the realm of prognostic risk. An increased risk exists due to concealed defects caused by fraudulent misrepresentation and which were not identifiable by the expert.

Damage or defects resulting from normal use or wear and tear of the vehicle will be accepted in accordance with the applicable standard.

There was no explicit identification or monetary consideration of the expected features within the product.

Features which, in their nature and extent, slightly exceed normal use but do not constitute unacceptable damage, will be documented and indicated as signs of wear, if applicable.

Damage or defects that, according to the applicable standard, can no longer be attributed to normal use or wear and tear are listed under "Value Reducing Factors" in the product description.

Depending on the product specification, a monetary ID can be provided. If this takes place, the costs can be 100% d or pro rata depending on the vehicle's age and mileage.

Previous damages

No apparent prior damage that had been repaired could be found on the vehicle.



Figure 1: Diagonal front (left)



Figure 2: Diagonal front (right)



Figure 3: Interior - front



Figure 4: Interior - rear



Figure 5: Instrument cluster



Figure 6: Instrument panel



Figure 7: Interior 360° view



Figure 8: Cargo area



Figure 9: VIN



Figure 10: Mounted tyres

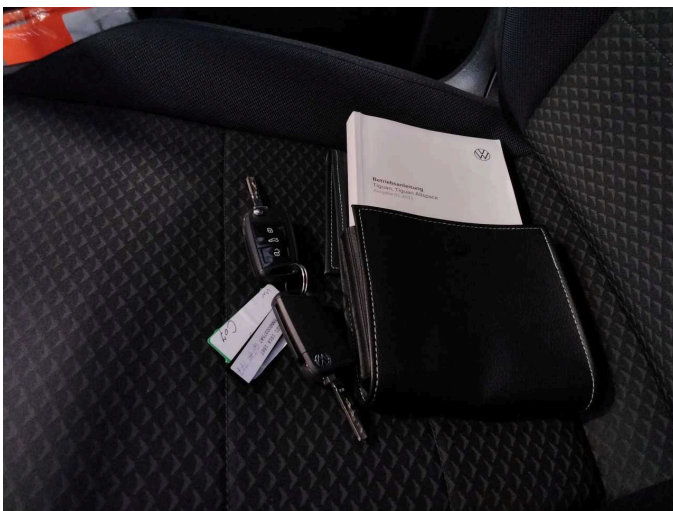


Figure 11: Documents



Figure 12: Additional tyres



Figure 13: Additional tyres



Figure 14: Navigation



Figure 15: Misc.



Figure 16: Misc.



Figure 17: Misc.



Figure 18: Misc.



Figure 19: Misc.



Figure 20: Misc.

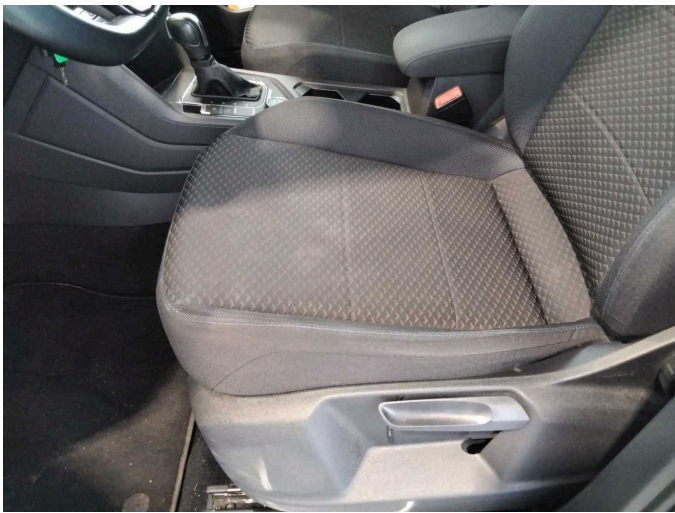


Figure 21: Misc.



Figure 22: Misc.

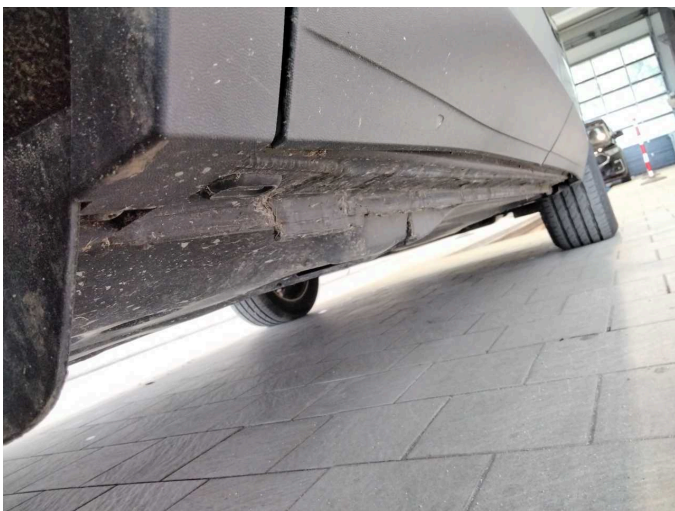


Figure 23: Misc.

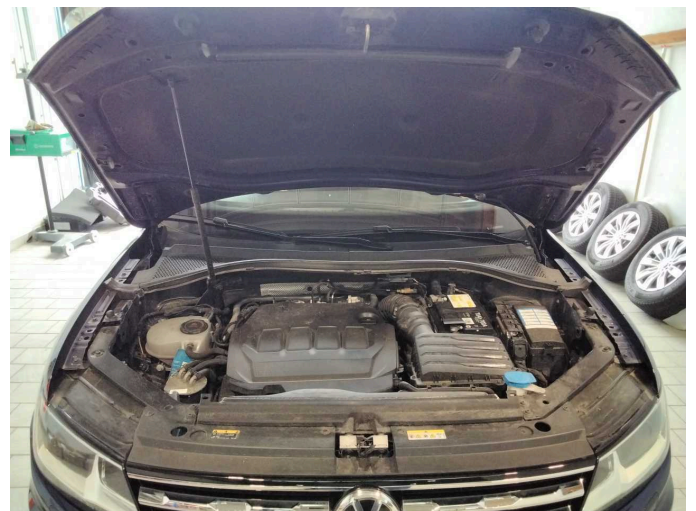


Figure 24: Misc.



Figure 25: Misc.



Figure 26: Misc.

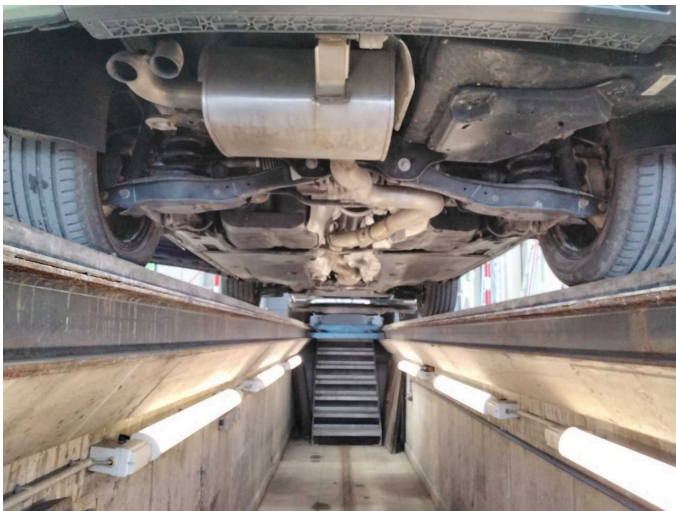


Figure 27: Misc.



Figure 28: Misc.



Figure 29: Misc.



Damage 1: Equipment: Tirefit filler - Expired - Replace



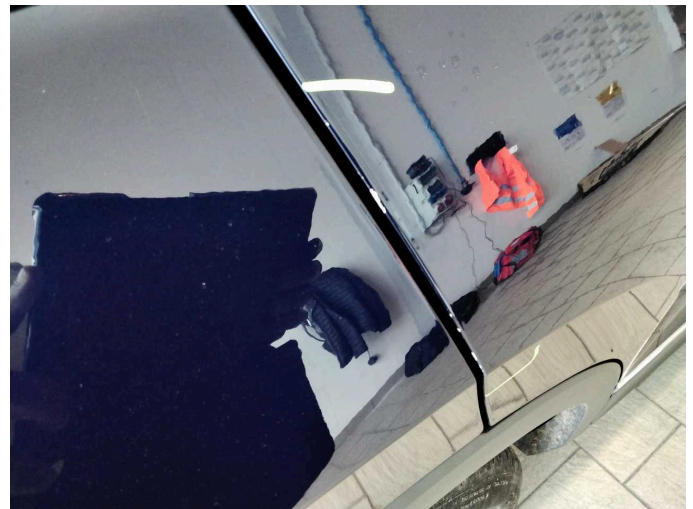
Damage 2: Door - rear left side: Door edge - Scratch(es) - Smart repair



Damage 2: Door - rear left side: Door edge - Scratch(es) - Smart repair



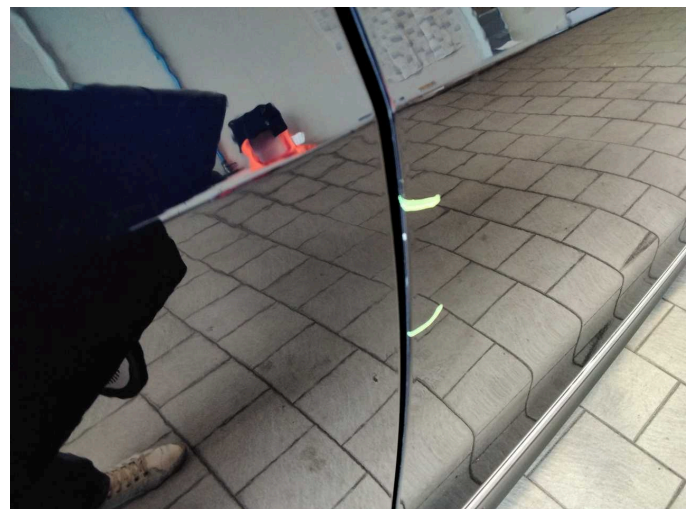
Damage 3: Door - rear right side: Door edge - Scratch(es) - Smart repair



Damage 3: Door - rear right side: Door edge - Scratch(es) - Smart repair



Damage 4: Door - front right side: Door edge - Scratch(es) - Smart repair



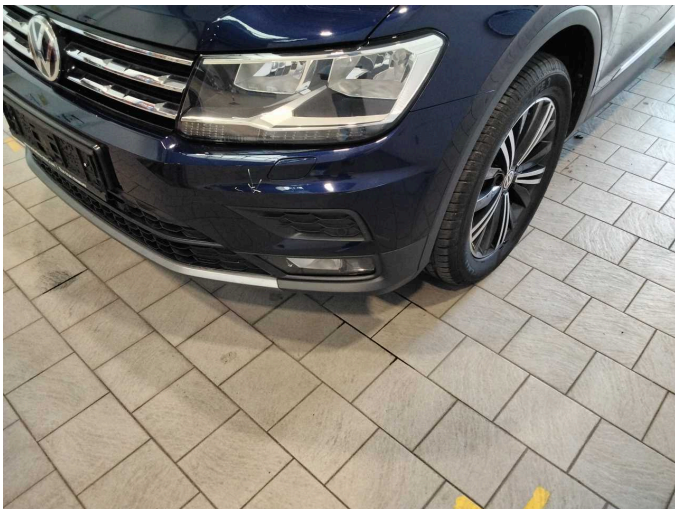
Damage 4: Door - front right side: Door edge - Scratch(es) - Smart repair



Damage 5: Side panel - rear left side: Side panel - dent(s) - Smooth repair work



Damage 5: Side panel - rear left side: Side panel - dent(s) - Smooth repair work



Damage 6: Front bumper: Front bumper - Scratch(es) - Smart repair



Damage 6: Front bumper: Front bumper - Scratch(es) - Smart repair



Damage 7: Wheel / tyres: Alloy rim - front left side - Scratch(es) - Loss in value



Damage 7: Wheel / tyres: Alloy rim - front left side - Scratch(es) - Loss in value



Damage 8: Door - front left side: Door - Dent / paintcoat damage - Smart repair



Damage 8: Door - front left side: Door - Dent / paintcoat damage - Smart repair



Damage 8: Door - front left side: Door - Dent / paintcoat damage - Smart repair



Damage 9: Door - front left side: Brightware - lower (Kunststoffleiste) - Scratch(es) - Replace



Damage 9: Door - front left side: Brightware - lower (Kunststoffleiste) - Scratch(es) - Replace



Damage 10: Side panel - rear right side: Wheel arch - Scratch(es) - Replace



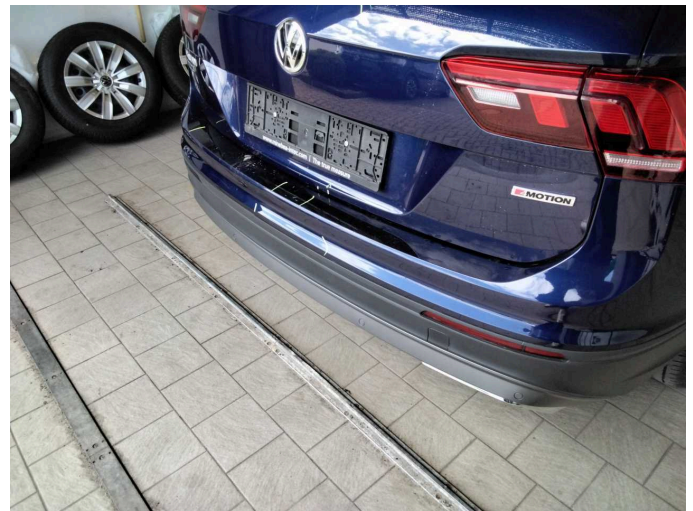
Damage 10: Side panel - rear right side: Wheel arch - Scratch(es) - Replace



Damage 11: Wing mirror - right side: Cap - Scratch(es) - Replace



Damage 11: Wing mirror - right side: Cap - Scratch(es) - Replace



Damage 12: Rear bumper: Rear bumper - Scratch(es) - Paint



Damage 12: Rear bumper: Rear bumper - Scratch(es) - Paint



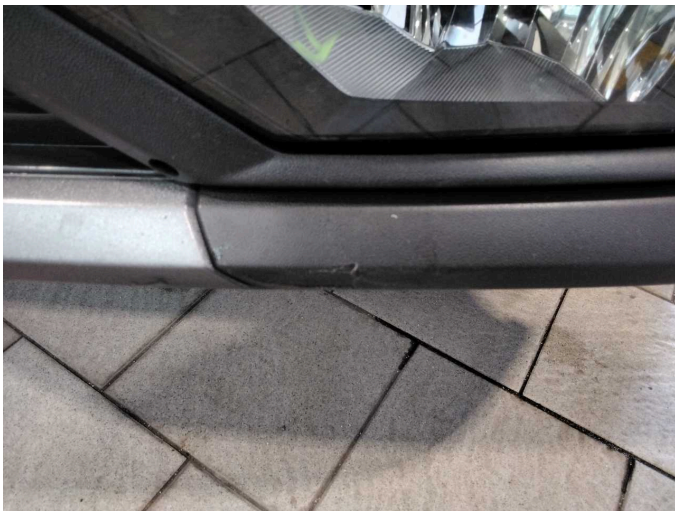
Damage 12: Rear bumper: Rear bumper - Scratch(es) - Paint



Damage 12: Rear bumper: Rear bumper - Scratch(es) - Paint



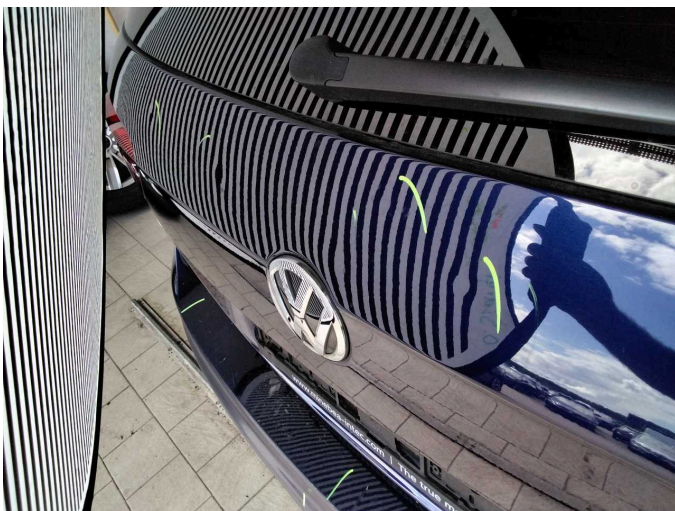
Damage 13: Front bumper: Front bumper (Unterteil) - Scratch(es) - Replace



Damage 13: Front bumper: Front bumper (Unterteil) - Scratch(es) - Replace



Damage 14: Boot lid / rear door: Boot lid - Dent / paintcoat damage - Repair and paint



Damage 14: Boot lid / rear door: Boot lid - Dent / paintcoat damage - Repair and paint



Damage 14: Boot lid / rear door: Boot lid - Dent / paintcoat damage - Repair and paint



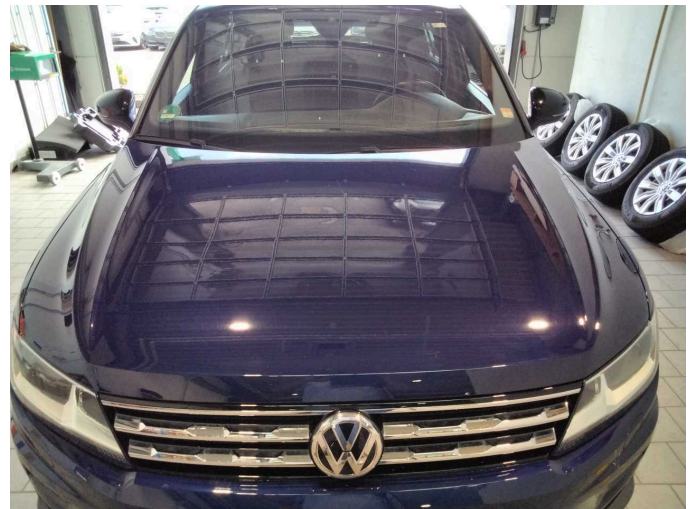
Damage 15: Mudguard - right side: Mudguard - right side - Scratch(es) - Paint



Damage 15: Mudguard - right side: Mudguard - right side - Scratch(es) - Paint



Wear and tear 1: Vehicle glazing: Windscreen - Stone chips - No deduction



Wear and tear 2: Bonnet: Bonnet - Stone chips - No deduction



Mudguard - right side: 200 µm



Mudguard - right side: 200 µm



Door - front right side: 206 μm



Door - front right side: 206 μm



Wartungshistorie

(gemäß Auftraggeber Informationen)

Fahrgestellnummer: WVGZZZ5NZMM138989
Hersteller / Modell: VOLKSWAGEN VOLKSWAGEN Tiguan Allspace 2.0 TDI SCR
4Motion DSG UNITED

Datum	KM-Stand	Beschreibung
12.01.2026	122.324	Batterie ern; Systemtest/Eigendiagnose
07.01.2026	122.150	Systemtest/Eigendiagnose
10.12.2025	120.988	Kraftstoffpumpe ern; Systemtest/Eigendiagnose
01.12.2025	120.952	Bremsflüssigkeit; Bremsflüssigkeit ern; Getriebeöl ern/prüfen; Motoröl b. Wartung; Ölfilter ern; Ölwechsel - Hinterachse; Regelwartungsdienst; Reparatur Sonstiges; Wartung Sonstiges
24.09.2024	90.375	HU + AU; Kraftstofffilter ern; Luftfiltereinsatz ern; Motoröl b. Wartung; Ölfilter ern; Regelwartungsdienst; Systemtest/Eigendiagnose; Wartung Sonstiges
08.02.2024	75.413	Systemtest/Eigendiagnose
15.08.2023	61.609	Bremse Sonstiges; Bremsflüssigkeit; Bremsflüssigkeit ern; Bremsklötze hinten; Bremsklötze vorne; Bremsscheiben hinten; Bremsscheiben vorne; Getriebeöl ern/prüfen; Motoröl b. Wartung; Ölfilter ern; Ölwechsel - Hinterachse; Regelwartungsdienst; Reparatur Sonstiges; Wartung Sonstiges
22.08.2022	30.042	Motoröl b. Wartung; Ölfilter ern; Regelwartungsdienst; Wartung Sonstiges