

Expertise

Protocol number: 46144113
Order No. / Reference: 26488472
Inspection date: 18 Jun 2026

Manufacturer: Ford

Model: Transit Custom 280 L1H1 LKW VA Trend

VIN: WF0YXXTTGYNT01456



Vehicle details

Manufacturer / Type / Model / Equipment

Ford Transit Custom 280 L1H1 LKW VA Trend

Vehicle Identification number WF0YXXTTGYNT01456

Mileage (Read) 102,459 km

First registration 20 Oct 2022

Number of holders 1

Power / Engine displacement 96 kw / 1,996 ccm

Fuel type / Cylinder Diesel / 4

Gearbox / Number of gears Manual / 6

Type of drive Front drive

Type of vehicle Van

Colour / colour code Frozen White

Doors / Seats 4 / 3

Upholstery type Cloth

Colour of upholstery Black-Anthracite



Vehicle details

Maintenance booklet / proof	digital proof / complete	Next maintenance in	25,000 km
Last service on / at	01/2026 at 90,654 km		
Key is / should be	2 / 2	FZG documents	ZB#2 (B) was available (copy), ZB#1 (S) was not available.
		Letter No.	GP458232
Previous damage / Accident	Detectable	Repainting	Detectable
Inspection conditions	sufficient	Lifting equipment / pit	yes
Test drive	Not performed	Engine function test	Performed
Manufacturer key number/ type code number	8566 / BMU 07069		
Emission standard	EURO6;WLTP;AR;PI/CI;N1 III, N2	fine dust sticker	
Permitted total weight	2,800 kg	Empty weight	
Dimensions	- x 2032 x -		

Tyres

Mounted tyres

#	Tyre size	Type of tyre	Manufacturer	Tread depth
1)	215/65 R15 104T	Winter tyres on Steel rim with wheel cover	Goodyear	6mm / 6mm
2)	215/65 R15 104T	Winter tyres on Steel rim with wheel cover	Goodyear	4mm / 4mm

Additional tyres

#	Tyre size	Type of tyre	Manufacturer	Tread depth
1)	215/65 R15 104T	Summer tyres on Steel	Goodyear	5mm / 5mm
2)	215/65 R15 104T	Summer tyres on Steel	Goodyear	7mm / 7mm

Replacement

Typ	Tyre size	Type of tyre	Manufacturer	Tread depth
E	215/65 R15 104T	Summer tyres on Steel	Goodyear	9 mm

Legend: Tread depth information for the left tire is listed first, for the right tire it is listed second on the axle in the direction of travel.



Equipment

Standard equipment

- 1 battery
- Anti-lock braking system with electronic brake force distribution (EBD)
- Exterior mirrors, manually adjustable (2) (with integrated turn signals)
- roof, flat
- Headliner in driver's cab (up to the partition wall to the cargo area)
- Tachometer
- Electronic Stability Program (ESP) with Traction Control System (TCS) (Hill Start Assist - Crosswind Assist - Emergency Brake Assist - Rollover Protection)
- FordPass Connect (including live traffic information, information about the current status or location of the vehicle, and control of selected vehicle functions via smartphone with the FordPass app. Real-time traffic information (in conjunction with audio systems 24 and 25). Further information about FordPass Connect can be found at <https://www.ford.de/fordpass-connect>.)
- Glove compartment with lid
- Interior lighting with delay circuit
- Front air conditioning (including dust and pollen filter)
- Fuel tank 70 l
- Cargo area lighting with activatable switch-off delay (after 30 minutes)
- Steering column, adjustable in height and reach
- Package: Style color package (front and rear bumpers and exterior mirror caps painted in body color)
- Radio: Audio system 13 additionally with DAB/DAB+ (Radio (FM/AM) - Four speakers, antenna - Audio remote control on the steering wheel - Bluetooth, USB port and hands-free system - MyFord Dock - additionally with digital radio reception DAB/DAB+ (Digital Audio Broadcasting))
- Headlight low beam: Halogen headlights with daytime running lights
- Sliding door entry light automatically illuminates when the door is opened
- Mud flaps front and rear
- Half-height side wall cladding
- Seat belts (front seat belt tensioners and force limiters - warning system for unfastened driver's seat belt)
- Seats: Seat Package 4 - Partition, without window (Custom Truck Base MH) (Driver's seat, 4-way adjustable (forward/backward, backrest, seat cushion tilt, height) - Double passenger seat with storage compartment under individually foldable seat cushions - Height-adjustable headrests - Interior armrest for driver - BASIC seat cover: fabric - Partition without window)
- Start-stop system
- Lashing eyes 8
- Heat-insulating glazing, lightly tinted
- Auxiliary heater, electric
- Driver's side airbag
- Exterior mirrors, electrically adjustable and heated (with integrated turn signals)
- On-board computer (with consumption and mileage information (e.g. remaining range) and outside temperature display)
- Double-leaf rear door with 180° opening angle (without window)
- Third brake light
- Front electric windows (with quickdown/up function for driver's side)
- Ford Easy Fuel (comfortable fuel filler cap and misfuelling protection)
- Warranty: 2-year Ford new car warranty including Ford Assistance mobility guarantee
- Generator, 240 A
- Cruise control system including imitation leather steering wheel (with adjustable speed limiter)
- Transmission: 6-speed transmission
- Lockable glove compartment with lid
- Interior lighting with delay function (with reading lights at the front)
- Paint finish: Solid color paint
- Cargo area floor: Vinyl floor covering omitted
- Cargo area floor: Vinyl floor covering, sealed, "Easy Clean"
- Emergency brake assist including emergency brake light
- Front and rear parking pilot system including fog lights
- Particulate filter: diesel particulate filter
- Wheel hub covers
- Wheel trims
- Wheels/Tires: Spare wheel, steel wheel
- Wheels: Steel wheels 6.5 J x 15 with 215/65 R 15 tires (6.5 J x 15 with 215/65 R 15 tires)
- Headlights: Halogen projector headlights (with LED daytime running lights and fog lights with static cornering lights)
- Sliding door: Sliding door, right
- Side protection strips
- Power steering
- Seats: Seat Package 13 - Partition (load-through flap), without window (Custom Truck Trend) (Driver's seat, 4-way adjustable (forward/backward, backrest, seat cushion tilt, height) - Double passenger seat with storage compartment under individually foldable seat cushions - Height-adjustable headrests - Integrated tray in the double passenger seat (fold-out) - Interior armrest for driver - Manual lumbar support (driver's seat) - TREND seat cover: fabric - Partition (load-through flap), without window)
- Power outlet: 12-volt connection
- Immobiliser
- Central locking with remote control



Extra equipment

- Airbag (passenger side)
- Double-leaf rear door with 90° opening angle (with window)
- Front air conditioning
- LED lights in the cargo area
- Visibility Package III (Electrically adjustable and heated exterior mirrors - Heated windscreen - Windscreen washer fluid sensor - Electrically folding exterior mirrors - Rain-sensing wipers - Automatic headlights with day/night sensor - Lane Keeping Assist with Driver Alert and High Beam Assist - Rearview camera - Connected Radio audio system, DAB/DAB+, FordPass Connect 8" touchscreen, antenna control panel and audio remote control on the steering wheel - Android Auto and Apple CarPlay support)
- Radio: Audio System 24: Ford audio system including Ford SYNC 3 with AppLink, DAB/DAB+, navigation system. (Radio (FM/AM) 8" touchscreen multifunction display (20.32 cm), 4 speakers, FordPass Connect Wi-Fi hotspot, integrated control panel and audio remote control on the steering wheel, Ford SYNC 3 with touchscreen (hands-free system with voice control, SMS readout/sending function, Bluetooth, Emergency Assistance...), AppLink (advanced voice control, privacy mode, Android Auto and Apple CarPlay support, capacitive touchscreen technology,...), dynamic navigation, lane guidance, road map for Western Europe)
- Seats: Seat package 2 - partition, without window (Custom truck base MH)
- Voltage converter (230 V/150 Watt (socket))
- Power outlet: 12-volt connection in the cargo area (D-pillar)
- Exterior mirrors, electrically adjustable, heated and foldable
- Rear swing door without window (without interior mirror)
- Paintwork: Special paintwork in standard color
- Package: Service Line (shelving systems (left and right) - vise - ventilation for transporting gas cylinders - HDF wall cladding - screen-printed wooden floor in the cargo area (the standard lashing eyes are omitted))
- Radio: Audio system 21: Ford audio system with 8" multifunction display plus DAB/DAB+ (Connected Radio - FordPass Connect Wi-Fi hotspot (up to 4G/LTE, for up to 10 mobile devices) - 8" touchscreen multifunction display (20.32 cm screen diagonal) - Four speakers, antenna - Integrated control panel and audio remote control on the steering wheel - Support for Android Auto and Apple CarPlay)
- Radio: Audio system 25: Ford audio system including Ford SYNC3 with AppLink, DAB/DAB+, navigation
- Reversing camera with front and rear parking pilot system
- Headlights: Halogen projector headlights
- Seats: Seat Package 14 - Partition without window (Custom Truck Trend) (Driver's seat, 4-way adjustable (forward/backward, backrest, seat cushion tilt, height) - Single passenger seat, 4-way adjustable (forward/backward, backrest, seat cushion tilt, height) - Height-adjustable headrests - Heated driver's seat - Heated passenger seat - Interior armrest for driver - Interior armrest on single passenger seat - Manual lumbar support (driver's seat) - TREND seat cover: fabric - Partition without window)

Brief expert findings

Documents submitted	At the time of the inspection, the vehicle registration certificate Part 2 (title) was available, but the vehicle registration certificate Part 1 (document) was not. (Copy)
VIN comparison	The vehicle identification number (VIN) was read from the vehicle and its conformity with the submitted documents was confirmed by the undersigned during the inspection.
Inspection	The inspection conditions were sufficient for the assessment of the vehicle. Lifting equipment and/or a pit were available for examining the vehicle.
Test drive	No test drive/shunting maneuver was carried out during the inspection of the vehicle.
Engine function test	An engine test run was performed.

Value reducing factors

No.	Component group	Description
1	Misc.	Main inspection - No evidence - No deduction
2	Indicator - front	Mirror - right side (Kappe fehlt) - Differs from the original configuration - Replace
3	Body	Body - Glued / labelled - De-glue / neutralise
4	Sill - left side	Sill - Deformed - Repair and paint
5	Sill - right side	Sill - Deformed - Repair and paint
6	Door - front left side	Door - Dent / paintcoat damage - Repair and paint
7	Vehicle glazing	Windscreen - Broken / torn - repair according to calculation



Wear and tear

No.	Component group	Description
1	Bonnet	Bonnet - Stone chips - No deduction
2	Wing mirror - left side	Cap - Scratch(es) - No deduction
3	Roof	Roof rail - right side - dent(s) - No deduction

The vehicle shows signs of wear and tear commensurate with its age and use.

Previous damages

No.	Previous damage	Extent of damage (Net)
1	Side right, Provided by user / customer, from 12 Jan 2024	2.531,90 €

Repainting

No.	Repainting
1	Door - rear right side, Professionally carried out, Invoice of repair done Non-existent

Paint coat thickness measurement

Door - rear right side 219 µm

Order/Scope of Order

An order was placed to prepare a sales report for the described vehicle. This report includes the following:

- Description of key vehicle information
- Documentation of equipment features
(*Delivery by third-party service providers*)
- Documentation of damage, defects, missing parts
- Documentation of prior damage, unrepaired prior damage, repainting
- A brief visual or functional inspection of the equipment details, if possible.
(*Functional testing of driver assistance systems is not included in the scope of services!*)
- a photographic documentation of the vehicle

Basis for the order

This product is based on the guidelines for vehicle returns and valuations published by Alphabet Fleet GmbH. The expert makes the specific findings in each individual case objectively, within the framework of the prescribed standards, based on their own expertise.

The vehicle inspection takes place in a fully assembled, unassembled state.

Damage or defects that can only be detected during disassembly/diagnostic work or through further investigation remain within the realm of prognostic risk. An increased risk exists due to concealed defects caused by fraudulent misrepresentation and which were not identifiable by the expert.

Damage or defects resulting from normal use or wear and tear of the vehicle will be accepted in accordance with the applicable standard.

There was no explicit identification or monetary consideration of the expected features within the product.

Features which, in their nature and extent, slightly exceed normal use but do not constitute unacceptable damage, will be documented and indicated as signs of wear, if applicable.

Damage or defects that, according to the applicable standard, can no longer be attributed to normal use or wear and tear are listed under "Value Reducing Factors" in the product description.

Depending on the product specification, a monetary ID can be provided. If this takes place, the costs can be 100% d or pro rata depending on the vehicle's age and mileage.



Previous damages

According to available information previous damages were repaired at the vehicle. Traces of repairs, which allow conclusions about the area of repair, were not recognizable during the inspection.



Figure 1: Diagonal front (left)



Figure 2: Diagonal front (right)



Figure 3: Diagonal rear (left)



Figure 4: Diagonal rear (right)

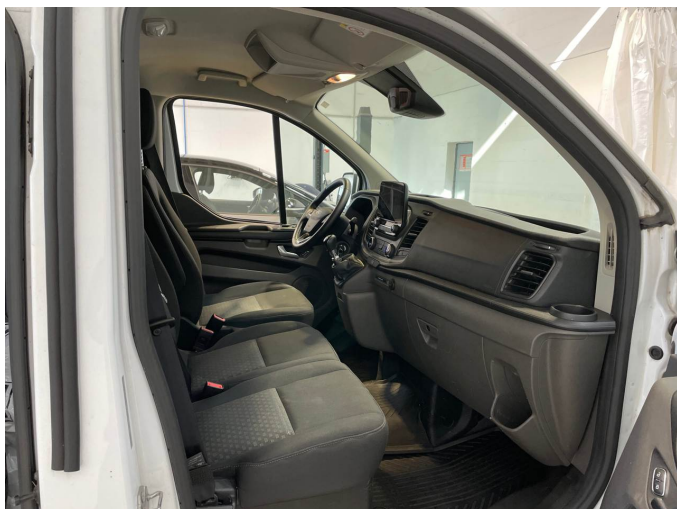


Figure 5: Interior - front



Figure 6: Interior - rear



Figure 7: Instrument cluster



Figure 8: Instrument panel



Figure 9: Interior 360° view



Figure 10: Cargo area



Figure 11: VIN



Figure 12: Mounted tyres



Figure 13: Documents



Figure 14: Documents



Figure 15: Documents



Figure 16: Additional tyres

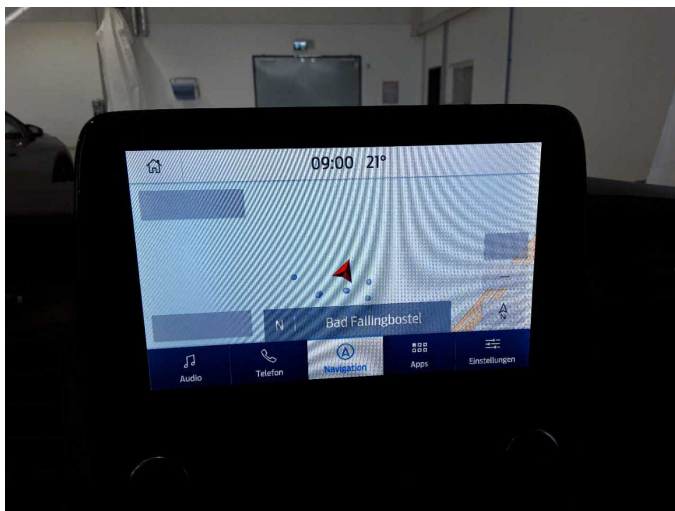


Figure 17: Navigation



Figure 18: Misc.



Figure 19: Misc.



Figure 20: Misc.

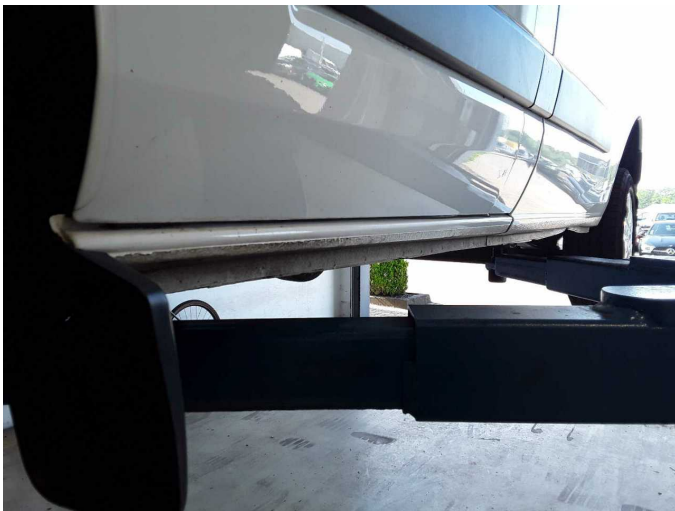


Figure 21: Misc.



Figure 22: Misc.

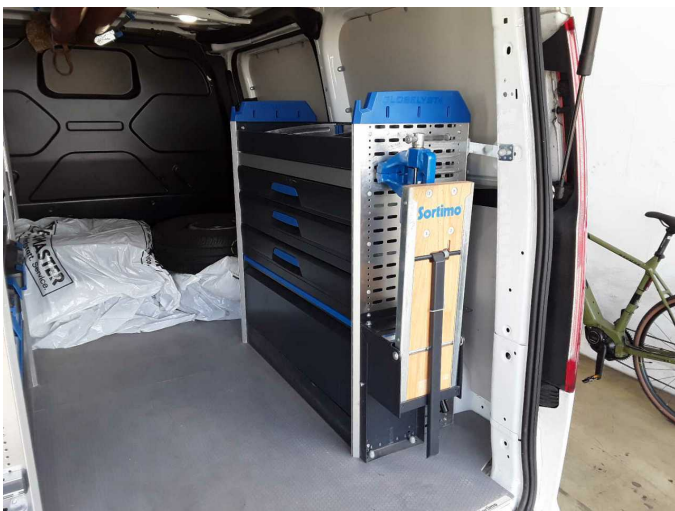


Figure 23: Misc.



Figure 24: Misc.



Figure 25: Misc.



Figure 26: Misc.



Figure 27: Misc.



Damage 2: Indicator - front: Mirror - right side (Kappe fehlt) - Differs from the original configuration - Replace



Damage 2: Indicator - front: Mirror - right side (Kappe fehlt) - Differs from the original configuration - Replace



Damage 3: Body - Body - Glued / labelled - De-glue / neutralise



Damage 3: Body: Body - Glued / labelled - De-glue / neutralise



Damage 4: Sill - left side: Sill - Deformed - Repair and paint



Damage 4: Sill - left side: Sill - Deformed - Repair and paint



Damage 4: Sill - left side: Sill - Deformed - Repair and paint



Damage 5: Sill - right side: Sill - Deformed - Repair and paint



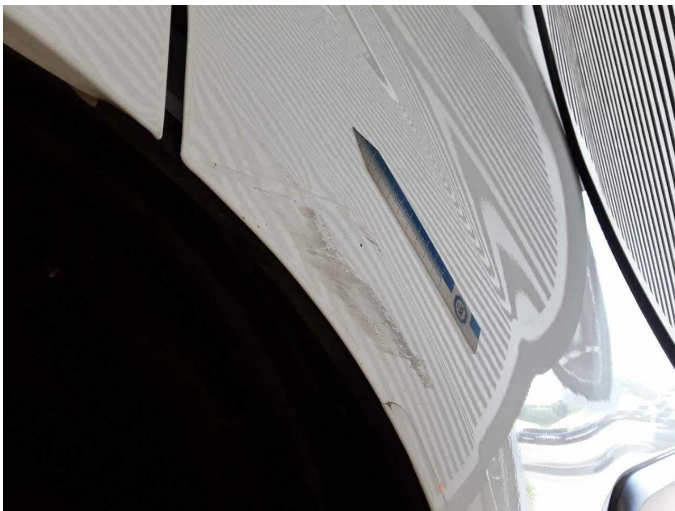
Damage 5: Sill - right side: Sill - Deformed - Repair and paint



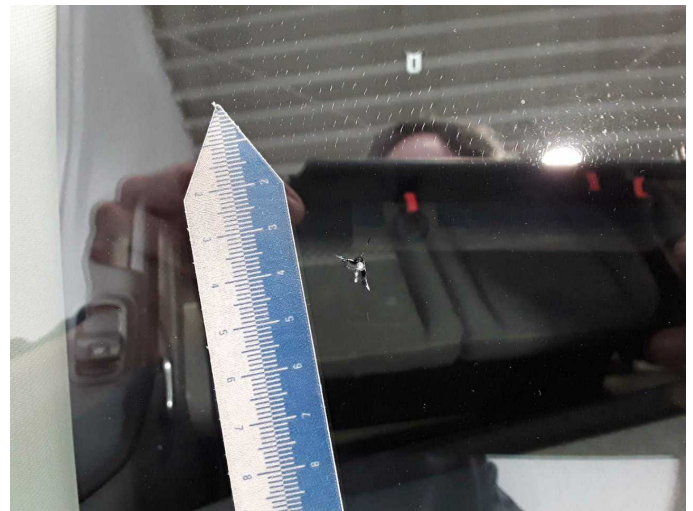
Damage 6: Door - front left side: Door - Dent / paintcoat damage - Repair and paint



Damage 6: Door - front left side: Door - Dent / paintcoat damage - Repair and paint



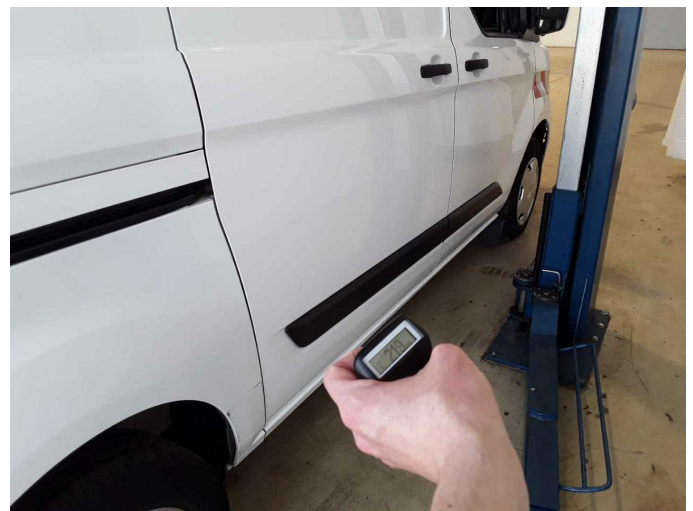
Damage 6: Door - front left side: Door - Dent / paintcoat damage - Repair and paint



Damage 7: Vehicle glazing: Windscreen - Broken / torn - repair according to calculation



Damage 7: Vehicle glazing: Windscreen - Broken / torn - repair according to calculation



Repainting 1: Door - rear right side



Repainting 1: Door - rear right side



Wartungshistorie

(gemäß Auftraggeber Informationen)

Fahrgestellnummer: WF0YXXTTGYNT01456

Hersteller / Modell: FORD FORD Transit Custom 280 L1H1 LKW VA Trend

Datum	KM-Stand	Beschreibung
16.01.2026	90.654	Bremsbelagfühler ern; Bremse Sonstiges; Bremsklötze hinten; Bremsklötze vorne; Bremsscheiben+Beläge v+h; Bremsscheiben hinten; Bremsscheiben vorne; Luftfiltereinsatz ern; Motoröl b. Wartung; Ölfilter ern; Regelwartungsdienst; Wartung Sonstiges
20.12.2024	55.640	Bremsinspektion vo + hi; Bremsbelagfühler ern; Bremse Sonstiges; Bremsklötze hinten; Bremsklötze vorne; Bremsscheiben + Klötze v; Bremsscheiben vorne
18.10.2024	48.655	Bremsflüssigkeit; Bremsflüssigkeit ern; HU + AU; Motoröl b. Wartung; Ölfilter ern; Regelwartungsdienst; Wartung Sonstiges