

Expertise

Protocol number: 46196125
Order No. / Reference: 26520863
Inspection date: 22 Jun 2026

Manufacturer: Ford

Model: S-Max 2.0 EcoBlue Aut. Titanium

VIN: WF0JXXWPCJNS10584



Vehicle details

Manufacturer / Type / Model / Equipment

Ford S-Max 2.0 EcoBlue Aut. Titanium

Vehicle Identification number WF0JXXWPCJNS10584

Mileage (Read) 97,893 km

First registration 8 Jun 2022

Number of holders 1

Power / Engine displacement 140 kw / 1,995 ccm

Fuel type / Cylinder Diesel / 4

Gearbox / Number of gears Automatic / 8

Type of drive Front drive

Type of vehicle Van

Colour / colour code Frozen White

Doors / Seats 5 / 7

Upholstery type Cloth

Colour of upholstery Black-Grey

TÜV SÜD Auto Partner GmbH
Wiesenring 2
04159 Leipzig

Inspection location
Hartmann Fleet Professionals GmbH
Leerenstraße 25
29683 Bad Fallingbommel



Equipment



Standard equipment

- Storage compartments (illuminated glove compartment - map pockets on the driver's and passenger's seat backrests)
- Exterior mirrors in body color, driver and passenger side, electrically adjustable and heated (with integrated turn signals and ambient lighting and electrically foldable)
- Hill start assist
- third brake light
- Dual exhaust system (integrated into the rear bumper)
- Front door sill trim in chrome finish
- Lane Assist including Lane Keeping Assist and Driver Alert (warns the driver of an unintentional lane change via short steering wheel vibrations (without activation of the turn signal) - additionally, active steering support assists in returning to the lane)
- Ford Power Start function (keyless start)
- Luggage compartment cover (removable)
- Luggage compartment lighting
- Transmission: 8-speed automatic transmission (with manual shift option)
- Back window, heater
- Interior lighting with delay circuit
- Isofix mounting (on all seats in the 2nd row)
- Electric child safety lock
- Air conditioning with automatic temperature control (separately adjustable for driver and passenger side (2-zone automatic climate control))
- Radiator grille (upper part) - with chrome decorative trim)
- Radiator grille with chrome trim (lower part)
- Steering wheel: Steering column, adjustable in height and reach
- Steering wheel: Paddle shifters on the steering wheel
- Front center console with padded armrest (storage compartment under the armrest - 2 cup holders - 12-volt socket at the rear)
- Fog lights (with static cornering lights)
- Emergency brake light (pulsating illumination of the brake lights during hard braking)
- Package: Winter (heated windscreen - individually and variably heated front seats)
- Radio equipment: CD audio system including Ford SYNC 3 with AppLink, touchscreen and Ford navigation system (radio/CD player, MP3-compatible, 2 USB ports, 8 speakers, steering wheel remote control, 20.3 cm screen diagonal), communication and entertainment system with extended voice control, Bluetooth interface, integration of various telephony functions and hands-free systems with voice command control, SMS text-to-speech function with display, music playback, Bluetooth audio streaming, emergency call assist, control of selected smartphone apps, support for Android Auto and Apple CarPlay)
- Seats: Front sports seats
- Seats: Front seats can be heated individually and variably.
- Start-stop system
- Storage compartment under driver and passenger seats
- Ambient lighting in the front (including door storage, front door handle and footwell lighting)
- Anti-lock braking system (ABS) (with Electronic Stability Program (ESP), Roll Stability Control (RSC) and Traction Control System (TCS))
- Tires: 7.5 J x 17 alloy wheels (4) with 235/55 R 17 tires (in 10x2-spoke design)
- Diesel particulate filter (DPF)
- Tachometer
- Driver information system display 25.4 cm color (on-board computer with fuel consumption and mileage information as well as outside temperature display)
- Electric front and rear windows (with anti-pinch protection and automatic opening and closing function)
- Electronic parking brake
- Ford Power Start function with Ford Key Free system (keyless starting and locking/unlocking)
- Cruise control system with intelligent speed limiter (interior mirror, automatically dimming - traffic sign recognition system)
- rear window wiper
- Intelligent Protection System (IPS): - Active headrests, front, height-adjustable - Front airbag for driver and front passenger - Knee airbag for driver - Head and shoulder airbags, front and for 2nd row of seats - Side airbag for driver and front passenger - Seat belt tensioners and belt force limiters, front - 3-point seat belts on all seats, height-adjustable in the front)
- Paint finish: Solid
- Steering wheel: Multifunction leather steering wheel and leather gear knob
- Front and rear reading lights (with LED technology)
- MyKey key system (individually programmable second key) (setting options include: - Limiting the maximum speed and radio volume (to max. volume 15 out of 32) - Speed warning (when the set speed limit is exceeded) - Safety assistance systems cannot be deactivated - Extended warning system for unfastened seat belts)
- Front and rear parking pilot system
- Upholstery: Cloth
- Tire repair kit (for use at a maximum speed of 80 km/h)
- Tire Pressure Monitoring System (TPMS)
- Windscreen wipers with rain sensor
- Headlight dipped beam with switch-off delay including "greeting function"
- Headlight assistant with day/night sensor
- Electro-mechanical power steering (EPAS - Electric Power Assisted Steering)
- Seats: Driver and front passenger seats, 4-way manually adjustable (including manually adjustable lumbar support)



- LED daytime running lights
- Premium carpet floor mats (for the 1st and 2nd row of seats)
- Immobiliser

- Seats: Flexible seating system "FoldFlatSystem (FFS)" (2nd row of seats with 3 individual seats - adjustable longitudinally - seat backrests adjustable for tilt and individually foldable - headrests retractable)
- Power outlet: 12-volt connection at the front (and in the first row of seats in the passenger compartment)
- Warning system for unfastened seat belts for the 1st and 2nd rows of seats
- Central locking with remote control (and remote luggage compartment release; door lock only on driver's side)

Extra equipment

- Adaptive LED headlights (Ford Dynamic LED) (Headlights, adaptively steering with cornering lights - LED headlights with glare-free high beam - LED daytime running lights including sequential LED turn signals in the headlights)
- Tires: 7.5 J x 17 alloy wheels (4) with 235/55 R 17 tires
- Roof rails "aluminum look"
- Front camera with split-view technology
- Boot lid
- Heated steering wheel
- Package: Business III with adaptive cruise control (digital radio reception DAB/DAB+ (Digital Audio Broadcasting) - Active Park Assist with parallel and perpendicular parking function - reversing camera - adaptive cruise control (ACC) - pre-collision assist (distance display and distance warning, collision warning system and active emergency braking assist) - traffic jam assist with stop & go function)
- Parking Assist (Active Park Assist)
- Pre-Collision Assist
- Radio equipment: CD audio system including Ford SYNC 3 with AppLink, touchscreen, DAB and Ford navigation system.
- Seats: 3rd row of seats with 2 individual seats (Easy FoldFlat System) (seat backrests can be folded down individually at the touch of a button - headrests can be lowered - easy entry into the 3rd row of seats (Easy Entry))
- Airbag: Side airbags on the outer seats of the 2nd row.
- Detachable towbar
- Electrically swiveling towbar
- Exterior mirrors in body color, driver and passenger side, electrically adjustable and heated
- Anti-theft alarm system with interior monitoring and double locking.
- Paint finish: Frost White
- Sony navigation system including Ford SYNC 3 with AppLink and touchscreen (radio/CD player, MP3-compatible, 2 USB ports, 9 premium speakers, steering wheel remote control, 20.3 cm screen diagonal, communication and entertainment system with extended voice control, Bluetooth interface, integration of various telephony functions and hands-free system with voice command control, SMS text-to-speech function with display, music playback, Bluetooth audio streaming, emergency call assistant, control of selected smartphone apps, support for Android Auto and Apple CarPlay)
- Reversing camera (with display on screen)
- Side windows from the 2nd row of seats and rear window, dark tinted.
- Sunshades in the rear side doors (manual)
- Power outlet: 230-volt connection (150 watts)

Brief expert findings

Documents submitted	At the time of the inspection, the vehicle registration certificate Part 2 (title) was available, but the vehicle registration certificate Part 1 (document) was not. (Copy)
VIN comparison	The vehicle identification number (VIN) was read from the vehicle and its conformity with the submitted documents was confirmed by the undersigned during the inspection.
Inspection	The inspection conditions were sufficient for the assessment of the vehicle. No lifting equipment or pit was available for inspecting the vehicle. Therefore, inspection of the vehicle's underside was only possible to a limited extent.
Test drive	No test drive/shunting maneuver was carried out during the inspection of the vehicle.
Engine function test	An engine test run was performed.



Value reducing factors

No.	Component group	Description
1	Misc.	Inspection / maintenance - Incomplete - No deduction
2	Equipment	Tirefit filler - Expired - Replace
3	Door - rear left side	Door edge - Scratch(es) - Smart repair
4	Trim / covers	Boot lid - interior trim - Scratch(es) - Replace
5	Front bumper	Front bumper - Dent / paintcoat damage - Repair and paint
6	Boot lid / rear door	Rear spoiler - dent(s) - Repair and paint

Wear and tear

No.	Component group	Description
1	Interior	Cargo area floor - Scratched - No deduction
2	Body	Body (Flugrost) - Corrosion - No deduction
3	Vehicle glazing	Windscreen - Stone chips - No deduction
4	Bonnet	Bonnet - Stone chips - No deduction
5	Side panel - rear left side	Sill - Scratch(es) - No deduction
6	Roof	Roof rail - right side - dent(s) - No deduction

The vehicle shows signs of wear and tear commensurate with its age and use.

Missing parts

Description

Interior - Ashtray - front

Previous damages

No.	Previous damage	Extent of damage (Net)
1	Rear, Provided by user / customer, from 29 Sept 2023	886,26 €

Order/Scope of Order

An order was placed to prepare a sales report for the described vehicle. This report includes the following:

- Description of key vehicle information
- Documentation of equipment features
(*Delivery by third-party service providers*)
- Documentation of damage, defects, missing parts
- Documentation of prior damage, unrepaired prior damage, repainting
- A brief visual or functional inspection of the equipment details, if possible.
(*Functional testing of driver assistance systems is not included in the scope of services!*)
- a photographic documentation of the vehicle



Basis for the order

This product is based on the guidelines for vehicle returns and valuations published by Alphabet Fleet GmbH. The expert makes the specific findings in each individual case objectively, within the framework of the prescribed standards, based on their own expertise.

The vehicle inspection takes place in a fully assembled, unassembled state.

Damage or defects that can only be detected during disassembly/diagnostic work or through further investigation remain within the realm of prognostic risk. An increased risk exists due to concealed defects caused by fraudulent misrepresentation and which were not identifiable by the expert.

Damage or defects resulting from normal use or wear and tear of the vehicle will be accepted in accordance with the applicable standard.

There was no explicit identification or monetary consideration of the expected features within the product.

Features which, in their nature and extent, slightly exceed normal use but do not constitute unacceptable damage, will be documented and indicated as signs of wear, if applicable.

Damage or defects that, according to the applicable standard, can no longer be attributed to normal use or wear and tear are listed under "Value Reducing Factors" in the product description.

Depending on the product specification, a monetary ID can be provided. If this takes place, the costs can be 100% d or pro rata depending on the vehicle's age and mileage.

Previous damages

According to available information previous damages were repaired at the vehicle. Traces of repairs, which allow conclusions about the area of repair, were not recognizable during the inspection.

Comments

-Der montierte Winterradsatz ist kein Bestandteil des Auslieferungsumfangs.



Figure 1: Diagonal front (left)



Figure 2: Diagonal front (right)



Figure 3: Diagonal rear (left)



Figure 4: Diagonal rear (right)



Figure 5: Interior - front



Figure 6: Interior - rear



Figure 13: Documents



Figure 14: Documents



Figure 15: Additional tyres

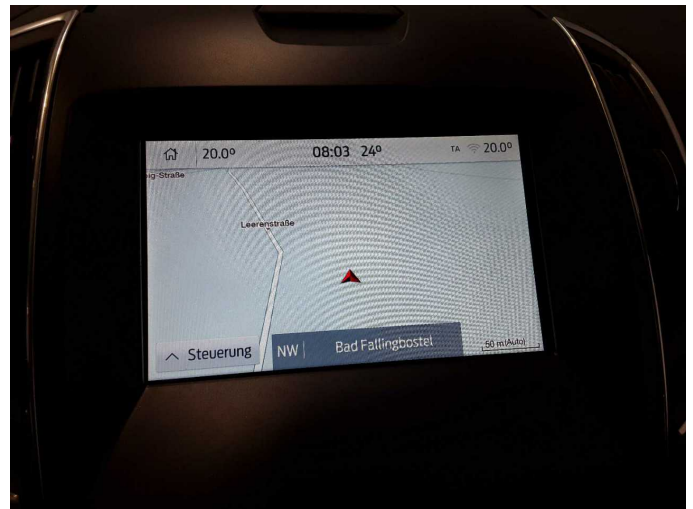


Figure 16: Navigation



Figure 17: Misc.



Figure 18: Misc.



Figure 19: Misc.



Figure 20: Misc.

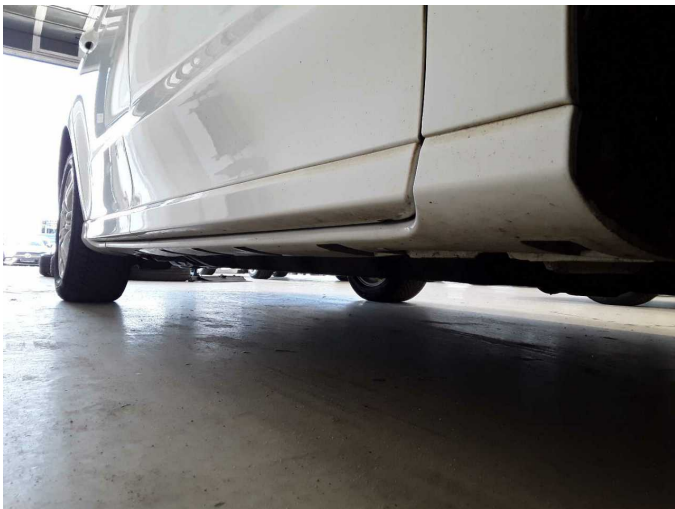


Figure 21: Misc.

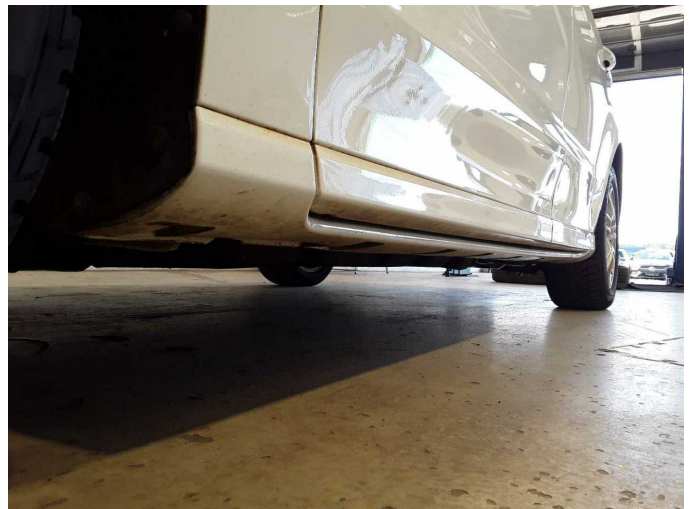


Figure 22: Misc.



Figure 23: Misc.



Figure 24: Misc.



Figure 25: Misc.



Figure 26: Misc.



Damage 2: Equipment: Tirefit filler - Expired - Replace



Damage 3: Door - rear left side: Door edge - Scratch(es) - Smart repair



Damage 3: Door - rear left side: Door edge - Scratch(es) - Smart repair



Damage 4: Trim / covers: Boot lid - interior trim - Scratch(es) - Replace



Damage 4: Trim / covers: Boot lid - interior trim - Scratch(es) - Replace



Damage 4: Trim / covers: Boot lid - interior trim - Scratch(es) - Replace



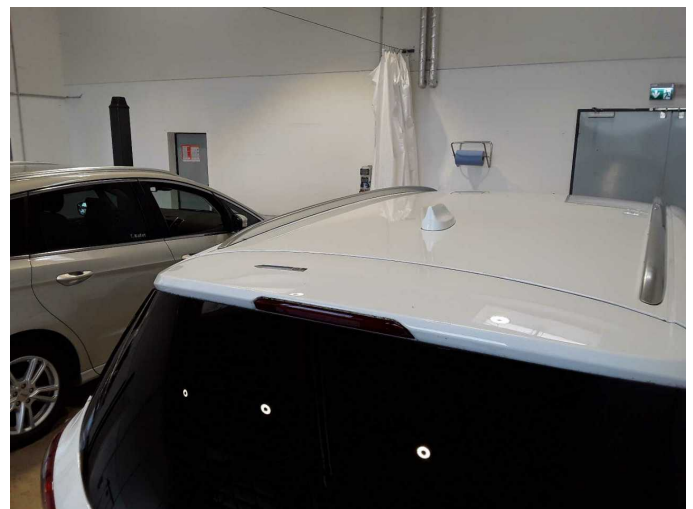
Damage 5: Front bumper: Front bumper - Dent / paintcoat damage - Repair and paint



Damage 5: Front bumper: Front bumper - Dent / paintcoat damage - Repair and paint



Damage 5: Front bumper: Front bumper - Dent / paintcoat damage - Repair and paint



Damage 6: Boot lid / rear door: Rear spoiler - dent(s) - Repair and paint



Damage 6: Boot lid / rear door: Rear spoiler - dent(s) - Repair and paint



Damage 6: Boot lid / rear door: Rear spoiler - dent(s) - Repair and paint



Wartungshistorie

(gemäß Auftraggeber Informationen)

Fahrgestellnummer: WF0JXXWPCJNS10584

Hersteller / Modell: FORD FORD S-Max 2.0 EcoBlue Aut. TITANIUM

Datum	KM-Stand	Beschreibung
29.10.2025	88.852	Ölfilter ern; Regelwartungsdienst
28.08.2025	84.019	Motoröl b. Wartung; Ölwechsel