

2-DNZ-198

2-DNZ-198 · ST-line 125pk 92kw mHEV M6 5d · 7 May 2026 · Zaventem (BE)

Specifications

License Plate Number	2-DNZ-198	Fuel Type	Hybrid Gasoline
Manufacturer	FORD	VIN	WF0NXXGCHNPL84056
Model	Focus	Cylinder Capacity	999 ^{cm³}
Model Versions	ST-line 125pk 92kw mHEV M6 5d	Transmission Type	Handmatig geschakelde transmissie
Body Type	5 door hatchback	First Admission	10-05-2023
Color	Blue	Odometer	87.001 ^{Km}
Paint Type	Metallic	Numer Of Keys	2
Production Year	2023	Interior	Grey
KW	92	Number Headrests	5

Images





Accessories

ABS

Airbags

Alloy wheels

Audio System

Automatic air conditioning

Bluetooth car kit

Central door locking

Centre armrest

Cruise control

Electric rear windows

Electric windows front

Electrically adjustable exterior mirrors

Front & rear parking sensors

Leather steering wheel

Navigation system

Seat heating

Steering wheel multifunction

Steeringwheel - Heated

Windscreen - Heated

Condition

Condition exterior Adequate

Condition interior Adequate

Last Maintenance Unknown

Previous Repairs Unknown

Tire Specifications

Tire	Profile	Brand	Width	Aspect Ratio	Radial	Type
Front Left	6 ^{mm}	Ovation	215 ^{mm}	50 ^{mm}	17 ^{inch}	All Season
Rear Left	5 ^{mm}	Goodyear	215 ^{mm}	50 ^{mm}	17 ^{inch}	All Season
Front Right	6 ^{mm}	Ovation	215 ^{mm}	50 ^{mm}	17 ^{inch}	All Season
Rear Right	5 ^{mm}	Goodyear	215 ^{mm}	50 ^{mm}	17 ^{inch}	All Season
Spare Tire Type	None					

Damages



Damage Part

Damage Type

Repair Type

Acceptable

Alloy - Right Front

Damaged

Rim repair

No



Damage Part

Damage Type

Repair Type

Acceptable

Skirt - Right

Scratch(es)

Spray

No



Damage Part

Damage Type

Repair Type

Acceptable

Frontdoor - Right

Scratch(es)

Spray

No



Damage Part

Damage Type

Repair Type

Acceptable

Reardoor - Right

Scratch(es)

Spray

No



Damage Part

Damage Type

Repair Type

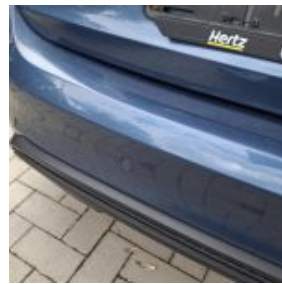
Acceptable

Fender - Rear Right

Scratch(es)

Spray

No



Damage Part

Damage Type

Repair Type

Acceptable

Bumper - Rear

Scratch(es)

Spray

No



Damage Part

Damage Type

Repair Type

Acceptable

Reardoor - Left

Door-edge chipped

Restyle / Touch-up

No



Damage Part

Damage Type

Repair Type

Acceptable

Frontdoor - Left

Scratch(es)

Spray

No



Damage Part	Damage Type	Repair Type	Acceptable
Alloy - Left Front	Damaged	Rim repair	No



Damage Part	Damage Type	Repair Type	Acceptable
Bumper - Front	Scratch(es)	Spray	No



Damage Part	Notes	Repair Type	Acceptable
Other	Scherm reageert niet	to be settled	No



Damage Part	Damage Type	Notes	Repair Type	Acceptable
Other	Missing	Compressor	Replace	No



Damage Part

Damage Type

Repair Type

Acceptable

Trunkshelf

Missing

Replace

No