

## Expertise

Protocol number: 45992107  
Order No. / Reference: 26412313  
Inspection date: 17 Jun 2026

Manufacturer: Ford

Model: Focus Turnier 1.5 EcoBlue Start-Stopp-System Aut. TITANIUM

VIN: WF0PXXGCHPPL83987



### Vehicle details

#### Manufacturer / Type / Model / Equipment

Ford Focus Turnier 1.5 EcoBlue Start-Stopp-System Aut. TITANIUM

**Vehicle Identification number** WF0PXXGCHPPL83987

**Mileage (Read)** 58,003 km

**First registration** 8 May 2023

**Number of holders** 1

**Power / Engine displacement** 85 kw / 1,499 ccm

**Fuel type / Cylinder** Diesel / 4

**Gearbox / Number of gears** Automatic / 8

**Type of drive** Front drive

**Type of vehicle** Station wagon

**Colour / colour code** Moondust Silber Metallic

**Doors / Seats** 5 / 5

**Upholstery type** Cloth

**Colour of upholstery** Anthracite-Black



## Vehicle details

<b>Maintenance booklet / proof</b>	digital proof / complete	<b>Next maintenance in</b>	58 %
<b>Last service on / at</b>	08/2025 at 54,669 km		
<b>Key is / should be</b>	2 / 2	<b>FZG documents</b>	ZB#2 (B) was available (copy), ZB#1 (S) was not available.
		<b>Letter No.</b>	GT913450
<b>Previous damage / Accident</b>	None detectable	<b>Repainting</b>	None detectable
<b>Inspection conditions</b>	sufficient	<b>Lifting equipment / pit</b>	yes
<b>Test drive</b>	Not performed	<b>Engine function test</b>	Performed
<b>Manufacturer key number/ type code number</b>	8566 / BYE 00002		
<b>Emission standard</b>	EURO6;WLTP;AP;PI/CI; M, N1 I	<b>fine dust sticker</b>	
<b>Permitted total weight</b>	2,035 kg	<b>Empty weight</b>	

## Tyres

**Mounted tyres**

#	Tyre size	Type of tyre	Manufacturer	Tread depth
1)	205/60 R16 92H	Winter tyres on Light alloy	Bridgestone	3mm / 3mm
2)	205/60 R16 92H	Winter tyres on Light alloy	Bridgestone	4mm / 4mm

**Additional tyres**

#	Tyre size	Type of tyre	Manufacturer	Tread depth
1)	205/60 R16 92V	Summer tyres on Steel rim with wheel cover	Goodyear	4mm / 4mm
2)	205/60 R16 92V	Summer tyres on Steel rim with wheel cover	Goodyear	4mm / 4mm

**Replacement**

Typ	Tyre size	Type of tyre	Manufacturer	Tread depth
	Tirefit	Expiration date 05/2027		

**Legend: Tread depth information for the left tire is listed first, for the right tire it is listed second on the axle in the direction of travel.**



## Equipment

### Standard equipment

- Airbag: Passenger airbag deactivation
- Exterior mirrors painted in body color, electrically adjustable, heated and foldable
- Tires: 6.5 J x 16 design wheels (4) with 205/60 R16 tires
- Hill start assist
- Roof rails, aluminum
- Diesel particulate filter (DPF)
- Electronic Shifter
- Driver information system with on-board computer, color (10.7 cm screen diagonal)
- Electric parking brake with auto-hold function
- FordPass Connect including live traffic information
- Luggage compartment lighting
- Cruise control
- Illuminated glove compartment
- rear window wiper
- Interior mirror, automatically dimming
- Isofix bracket
- Headrests: 2 front and 3 rear, height adjustable
- LED headlights
- Adjustable steering column
- Center console "Premium" front
- Navigation: Ford SYNC 4 including Ford navigation system with AppLink, 13.2" touchscreen and DAB/DAB+
- Upholstery: Cloth
- Pre-Collision Assist
- Tire Pressure Monitoring System (TMPS)
- Headlight low beam
- Selective driving mode switch
- Seats: Passenger seat height-adjustable, manually
- Seats: Rear seat backrest
- Start-stop system
- Carpet floor mats in the front
- Lashing eyes in the luggage compartment
- Electronic immobilizer
- Central locking with remote control and remote luggage compartment release
- Anti-lock braking system (ABS) with electronic brake force distribution (EBD)
- Attachment points behind the second row of seats for mounting the safety partition net
- Fabric headliner
- Roof spoiler painted in car color
- Tachometer
- Electronic Safety and Stability Program (ESP)
- Lane keeping assist including lane keeping assist
- Electric windows front and rear
- Ford Power Start function
- Luggage compartment cover
- Speed limiter
- Transmission: 8-speed automatic transmission
- Back window, heater
- Interior lighting with LED technology
- Intelligent security system
- Air conditioning with automatic temperature control
- LED taillights
- Steering wheel: 3-spoke design
- Make-up mirrors in driver and passenger sun visors
- MyKey key system (individually programmable second key)
- Emergency call assistant
- Front and rear parking pilot system
- Post-Collision Assist
- Tire repair kit
- Windscreen wipers with rain sensor (sensitivity adjustable)
- Headlight assistant with day/night sensor
- Electromechanical speed-dependent power steering
- Seats: Driver's seat height adjustable
- Seats: Front sports seats with enhanced lateral support
- 12-volt power outlet in the luggage compartment
- Variable radiator air intake
- Warning system for unfastened seat belts for the 1st and 2nd rows of seats

### Extra equipment

- Paint finish: Metallic
- Side windows from the 2nd row of seats and rear window, dark tinted.
- Package: Winter (heated windscreen - heated steering wheel - individually and variably heated front seats)
- Safety partition net for luggage compartment



## Brief expert findings

Documents submitted	At the time of the inspection, the vehicle registration certificate Part 2 (title) was available, but the vehicle registration certificate Part 1 (document) was not. (Copy)
VIN comparison	The vehicle identification number (VIN) was read from the vehicle and its conformity with the submitted documents was confirmed by the undersigned during the inspection.
Inspection	The inspection conditions were sufficient for the assessment of the vehicle. Lifting equipment and/or a pit were available for examining the vehicle.
Test drive	No test drive/shunting maneuver was carried out during the inspection of the vehicle.
Engine function test	An engine test run was performed.

## Value reducing factors

No.	Component group	Description
1	Bonnet	Insulation lining - Damage caused by marten / rodent - Replace
2	Rear bumper	Rear bumper - Scratch(es) - Smart repair
3	Engine	Engine - Leaking - Diagnosed and repair if necessary
4	Mudguard - right side	Mudguard - right side - Scratched - Paint
5	Side panel - rear right side	Side panel - Scratch(es) - Paint
6	Door - rear right side	Door - Scratch(es) - Paint
7	Door - front right side	Door - Scratched - Paint
8	Vehicle glazing	Windscreen - Broken / torn - Replace

## Wear and tear

No.	Component group	Description
1	Wheel / tyres	Alloy rim - front right side - Scratched - No deduction
2	Wheel / tyres	Alloy rim - rear right side - Scratched - No deduction
3	Bonnet	Bonnet - Stone chips - No deduction
4	Trim / covers	Floor mats - Damaged - No deduction

The vehicle shows signs of wear and tear commensurate with its age and use.

## Order/Scope of Order

An order was placed to prepare a sales report for the described vehicle. This report includes the following:

- Description of key vehicle information
- Documentation of equipment features  
(*Delivery by third-party service providers*)
- Documentation of damage, defects, missing parts
- Documentation of prior damage, unrepaired prior damage, repainting
- A brief visual or functional inspection of the equipment details, if possible.  
(*Functional testing of driver assistance systems is not included in the scope of services!*)
- a photographic documentation of the vehicle



## Basis for the order

This product is based on the guidelines for vehicle returns and valuations published by Alphabet Fleet GmbH. The expert makes the specific findings in each individual case objectively, within the framework of the prescribed standards, based on their own expertise.

The vehicle inspection takes place in a fully assembled, unassembled state.

Damage or defects that can only be detected during disassembly/diagnostic work or through further investigation remain within the realm of prognostic risk. An increased risk exists due to concealed defects caused by fraudulent misrepresentation and which were not identifiable by the expert.

Damage or defects resulting from normal use or wear and tear of the vehicle will be accepted in accordance with the applicable standard.

There was no explicit identification or monetary consideration of the expected features within the product.

Features which, in their nature and extent, slightly exceed normal use but do not constitute unacceptable damage, will be documented and indicated as signs of wear, if applicable.

Damage or defects that, according to the applicable standard, can no longer be attributed to normal use or wear and tear are listed under "Value Reducing Factors" in the product description.

Depending on the product specification, a monetary ID can be provided. If this takes place, the costs can be 100% d or pro rata depending on the vehicle's age and mileage.

## Previous damages

No apparent prior damage that had been repaired could be found on the vehicle.

## Comments

Wartungshistorie gemäß Auftraggeber Informationen.

- Winterradsatz ist kein Bestandteil des Auslieferungsumfangs.



Figure 1: Diagonal front (left)



Figure 2: Diagonal front (right)



Figure 3: Diagonal rear (left)



Figure 4: Convertible with open roof



Figure 5: Interior - front



Figure 6: Interior - rear



Figure 7: Instrument cluster



Figure 8: Instrument panel



Figure 9: Interior 360° view



Figure 10: Cargo area



Figure 11: VIN



Figure 12: Mounted tyres



Figure 13: Documents

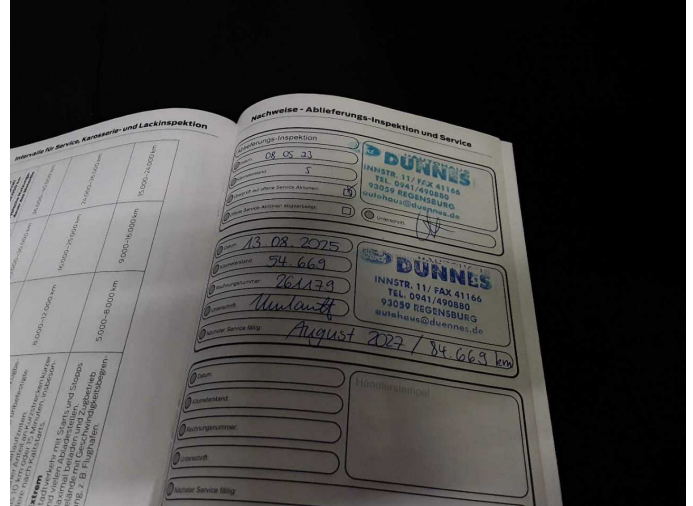


Figure 14: Documents



Figure 15: Additional tyres



Figure 16: Navigation



Figure 17: Misc.



Figure 18: Misc.



Figure 19: Misc.



Figure 20: Misc.



Figure 21: Misc.



Figure 22: Misc.



Figure 23: Misc.

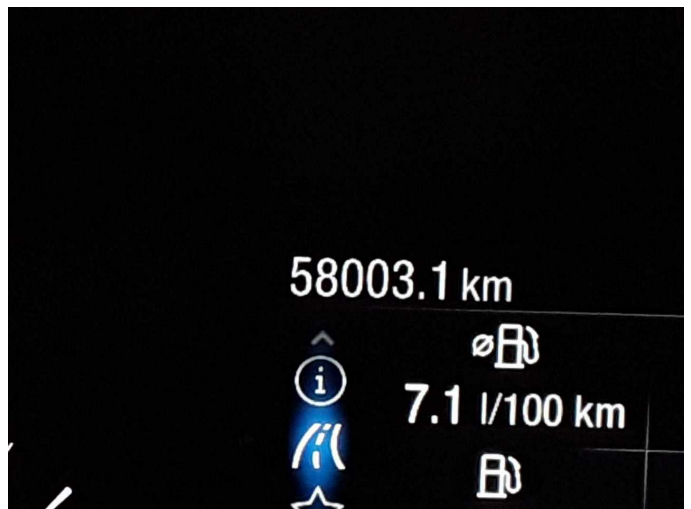


Figure 24: Misc.



Figure 25: Misc.



Figure 26: Misc.



Figure 27: Misc.



Damage 1: Bonnet: Insulation lining - Damage caused by marten / rodent - Replace



Damage 2: Rear bumper: Rear bumper - Scratch(es) - Smart repair



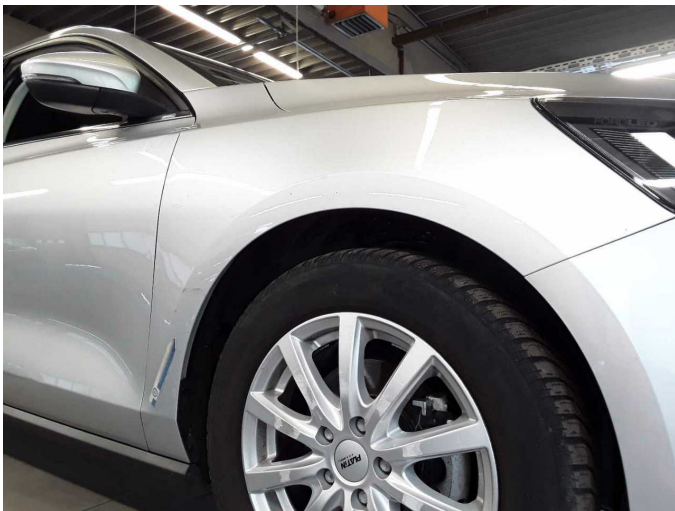
Damage 2: Rear bumper: Rear bumper - Scratch(es) - Smart repair



**Damage 3:** Engine: Engine - Leaking - Diagnosed and repair if necessary



**Damage 3:** Engine: Engine - Leaking - Diagnosed and repair if necessary



**Damage 4:** Mudguard - right side: Mudguard - right side - Scratched - Paint



**Damage 4:** Mudguard - right side: Mudguard - right side - Scratched - Paint



**Damage 5:** Side panel - rear right side: Side panel - Scratch(es) - Paint



**Damage 5:** Side panel - rear right side: Side panel - Scratch(es) - Paint



**Damage 6:** Door - rear right side: Door - Scratch(es) - Paint



**Damage 6:** Door - rear right side: Door - Scratch(es) - Paint



**Damage 6:** Door - rear right side: Door - Scratch(es) - Paint



**Damage 7:** Door - front right side: Door - Scratched - Paint



**Damage 7:** Door - front right side: Door - Scratched - Paint



**Damage 7:** Door - front right side: Door - Scratched - Paint



**Damage 8:** Vehicle glazing: Windscreen - Broken / torn - Replace



**Damage 8:** Vehicle glazing: Windscreen - Broken / torn - Replace



**Damage 8:** Vehicle glazing: Windscreen - Broken / torn - Replace



**Wear and tear 4:** Trim / covers: Floor mats - Damaged - No deduction



**Wear and tear 4:** Trim / covers: Floor mats - Damaged - No deduction



# Wartungshistorie

(gemäß Auftraggeber Informationen)

Fahrgestellnummer: WF0PXXGCHPPL83987  
Hersteller / Modell: FORD FORD Focus Turnier 1.5 EcoBlue Start-Stopp-System Aut.  
TITANIUM

Datum	KM-Stand	Beschreibung
14.08.2025	54.669	Bremsflüssigkeit; Bremsflüssigkeit ern; Kraftstofffilter ern; Luftfiltereinsatz ern; Motoröl b. Wartung; Ölfilter ern; Regelwartungsdienst; Wartung Sonstiges
04.04.2024	26.957	Motoröl b. Wartung; Ölfilter ern; Regelwartungsdienst; Wartung Sonstiges