

## Expertise

Protocol number: 46165102  
Order No. / Reference: 26529369  
Inspection date: 23 Jun 2026

Manufacturer: Ford

Model: S-Max 2.0 EcoBlue Aut. TITANIUM

VIN: WF0JXXWPCJNS08052



### Vehicle details

#### Manufacturer / Type / Model / Equipment

Ford S-Max 2.0 EcoBlue Aut. TITANIUM

**Vehicle Identification number** WF0JXXWPCJNS08052

**Mileage (Read)** 65,674 km

**First registration** 28 Apr 2022

**Number of holders** 1

**Power / Engine displacement** 110 kw / 1,995 ccm

**Fuel type / Cylinder** Diesel / 4

**Gearbox / Number of gears** Automatic / 8

**Type of drive** Front drive

**Type of vehicle** Van

**Colour / colour code** Agate Black Metallic

**Doors / Seats** 5 / 5

**Upholstery type** Cloth

**Colour of upholstery** Black



## Vehicle details

<b>Maintenance booklet / proof</b>	Available / complete	<b>Next maintenance in</b>	
<b>Last service on / at</b>	08/2025 at 53,840 km		
<b>Key is / should be</b>	2 / 2	<b>FZG documents</b>	ZB#2 (B) was available (copy), ZB#1 (S) was not available.
		<b>Letter No.</b>	GK800607
<b>Previous damage / Accident</b>	Detectable	<b>Repainting</b>	Detectable
<b>Inspection conditions</b>	sufficient	<b>Lifting equipment / pit</b>	No
<b>Test drive</b>	Not performed	<b>Engine function test</b>	Performed
<b>Manufacturer key number/ type code number</b>	8566 / BKM 01201		
<b>Emission standard</b>	EURO6;WLTP;AP;PI/CI; M, N1 I	<b>fine dust sticker</b>	
<b>Permitted total weight</b>	2,555 kg	<b>Empty weight</b>	

## Tyres

### Mounted tyres

#	Tyre size	Type of tyre	Manufacturer	Tread depth
1)	235/50 R18 101Y	Summer tyres on Light alloy	Michelin	5mm / 5mm
2)	235/50 R18 101Y	Summer tyres on Light alloy	Michelin	5mm / 5mm

**Legend: Tread depth information for the left tire is listed first, for the right tire it is listed second on the axle in the direction of travel.**

TÜV SÜD Auto Partner GmbH  
Wiesenring 2  
04159 Leipzig

Inspection location  
Hartmann Fleet Professionals GmbH  
Leerenstraße 25  
29683 Bad Fallingbommel



## Equipment



## Standard equipment

- Storage compartments (illuminated glove compartment - map pockets on the driver's and passenger's seat backrests)
- Exterior mirrors in body color, driver and passenger side, electrically adjustable and heated (with integrated turn signals and ambient lighting and electrically foldable)
- Attachment points for safety partition grilles (attachment points 2nd row of seats)
- Hill start assist
- third brake light
- Roof rails "aluminum look"
- Diesel particulate filter (DPF)
- Tachometer
- Driver information system display 25.4 cm color (on-board computer with fuel consumption and mileage information as well as outside temperature display)
- Electric front and rear windows (with anti-pinch protection and automatic opening and closing function)
- High Beam Assist
- Ford Easy Fuel (The Ford Easy Fuel convenience refueling system eliminates the need for a separate internal fuel filler cap and prevents misfueling by detecting the size difference between petrol and diesel nozzles. The filler neck only opens when the correct fuel is used.)
- Luggage compartment cover (removable)
- Cruise control system with intelligent speed limiter (interior mirror, automatically dimming - traffic sign recognition system)
- rear window wiper
- Interior mirror, automatically dimming
- Isofix mounting (on all seats in the 2nd row)
- Electric child safety lock
- Air conditioning with automatic temperature control (separately adjustable for driver and passenger side (2-zone automatic climate control))
- Steering wheel: Steering column, adjustable in height and reach
- Steering wheel: Multifunction leather steering wheel
- Front center console with padded armrest (storage compartment and 2 cup holders)
- Ford navigation system including Ford SYNC 3 with AppLink, touchscreen, DAB/DAB+ and FordPass Connect (communication and entertainment with voice control - Android Auto, Apple CarPlay - Bluetooth hands-free system and audio streaming - eCall emergency call system - live traffic - Wi-Fi hotspot - radio/CD player, 2 USB ports, 8 speakers, steering wheel controls - 20.3 cm screen - DAB/DAB+ - acoustic and visual route guidance, dynamic navigation, lane keeping assist, road map for Europe - extended voice control and voice output - Michelin travel guide for Europe - quick address search)
- Upholstery: Cloth
- Tire Pressure Monitoring System (TPMS)
- Windscreen wipers with rain sensor
- Headlight assistant with day/night sensor
- Ambient lighting in the front (including door storage, front door handle and footwell lighting)
- Anti-lock braking system (ABS) (with Electronic Stability Program (ESP), Roll Stability Control (RSC) and Traction Control System (TCS))
- Attachment points for safety partition grilles (attachment points 1st row of seats)
- Tires: 7.5 J x 17 alloy wheels (4) with 235/55 R 17 tires (in 5x2-spoke design)
- Overhead console (with glasses storage compartment and fold-out additional mirror for eye contact with rear passengers)
- Electronic Shifter
- Lane Assist including Lane Keeping Assist and Driver Alert (warns the driver of an unintentional lane change via short steering wheel vibrations (without activation of the turn signal) - additionally, active steering support assists in returning to the lane)
- Electronic parking brake
- Ford EasyFold: 2nd row seat backrests fold down electrically at the touch of a button.
- Ford Power Start function (keyless start)
- Ford Power Start function with Ford Key Free system (keyless starting and locking/unlocking)
- Luggage compartment lighting
- Transmission: 8-speed automatic transmission (with manual shift option)
- Back window, heater
- Interior lighting with delay circuit
- Intelligent Protection System (IPS): - Front headrests, 4-way height and tilt adjustable - Front airbag for driver and front passenger - Driver's knee airbag - Head and shoulder airbags, front and for 2nd row of seats - Side airbag for driver and front passenger - Side airbag for outer rear seats of the 2nd row - Seat belt tensioners and belt force limiters, front - 3-point seat belts on all seats, height adjustable in the front)
- Front and rear reading lights (with LED technology)
- MyKey key system (individually programmable second key) (setting options include: - Limiting the maximum speed and radio volume (to max. volume 15 out of 32) - Speed warning (when the set speed limit is exceeded) - Safety assistance systems cannot be deactivated - Extended warning system for unfastened seat belts)
- Fog light
- Emergency brake light (pulsating illumination of the brake lights during hard braking)
- Package: Winter (Heated windscreen - Heated leather steering wheel - Individually and variably heated front seats)
- Front and rear parking pilot system
- Tire repair kit (for use at a maximum speed of 80 km/h)
- LED taillights
- Headlight dipped beam with switch-off delay including "greeting function"



- Electro-mechanical power steering (EPAS - Electric Power Assisted Steering)
- Seats: Flexible seating system "FoldFlatSystem (FFS)" (2nd row of seats with 3 individual seats - adjustable longitudinally - seat backrests adjustable for tilt and individually foldable - headrests retractable)
- Power outlet: 12-volt connection in the luggage compartment and in the center console
- LED daytime running lights
- Traffic sign recognition system
- Lashing eyes in the luggage compartment
- Immobiliser
- Central locking with remote control (remote luggage compartment release - second folding vehicle key)

### Extra equipment

- Package: Business II (Ford navigation system incl. Ford SYNC 3, AppLink, 20.3 cm touchscreen, DAB/DAB+, voice control, Android Auto and Apple CarPlay, Bluetooth hands-free system and audio streaming, FordPass Connect, eCall emergency call system, radio/CD player, 2 USB ports, 8 speakers, steering wheel remote control, adaptive LED headlights, cornering lights, automatic headlight range control, automatic headlights, day/night sensor, high beam assist, LED daytime running lights, anti-theft alarm system, reversing camera)
- Seats: Ford ergonomic seat (driver and front passenger seat adjustable in 18 ways: - length, height and tilt of the seat - extendable thigh support - adjustable backrest - lumbar support electrically adjustable in 4 ways)
- Tires: 7.5 J x 18 alloy wheels (4) with 235/50 R 18 tires (10-spoke design in pearl grey premium paint finish, diamond-turned; with glossy black pockets)

- Seats: Driver and front passenger seats, 4-way manually adjustable (including manually adjustable lumbar support)
- Seats: Front sports seats (with enhanced lateral support)
- Seats: Front seats can be heated individually and variably.
- Start-stop system
- 230 volt socket
- Bumpers painted in body color
- Trays on the front seatbacks
- Premium carpet floor mats front and rear (as well as in the 3rd row of seats if ordered as an optional extra)
- Warning system for unfastened seat belts for the 1st and 2nd rows of seats (as well as the 3rd row of seats if ordered as an optional extra)
- Cigarette lighter (and ashtray in the center console)

- Adaptive cruise control with pre-collision assist and pedestrian detection (distance display and distance warning, forward alert system (FA) and active emergency braking assist - intelligent speed limiter - traffic jam assist with stop&go function)
- Paint finish: Metallic
- Safety partition net behind the 2nd row of seats
- Seats: 3rd row of seats with 2 individual seats (Easy FoldFlat System) (seat backrests can be folded down individually at the touch of a button and folded up manually - headrests can be lowered - easy entry to the 3rd row of seats (Easy Entry) - reading lights in the 3rd row of seats, LED)
- Side windows from the 2nd row of seats and rear window, dark tinted.
- Sunshades in the rear side doors (manual)

## Brief expert findings

Documents submitted	At the time of the inspection, the vehicle registration certificate Part 2 (title) was available, but the vehicle registration certificate Part 1 (document) was not. (Copy)
VIN comparison	The vehicle identification number (VIN) was read from the vehicle and its conformity with the submitted documents was confirmed by the undersigned during the inspection.
Inspection	The inspection conditions were sufficient for the assessment of the vehicle. No lifting equipment or pit was available for inspecting the vehicle. Therefore, inspection of the vehicle's underside was only possible to a limited extent.
Test drive	No test drive/shunting maneuver was carried out during the inspection of the vehicle.
Engine function test	An engine test run was performed.



## Value reducing factors

No.	Component group	Description
1	Equipment	Tirefit filler - Expired - Replace
2	Door - front right side	Door edge - Scratch(es) - Smart repair
3	Door - rear left side	Door - Scratch(es) - Smart repair
4	Door - front left side	Door - Scratch(es) - Smart repair
5	Trim / covers	Cargo area - lining - right side (+ links + Heckklappe) - Scratch(es) - Loss in value
6	Rear bumper	Rear bumper - Scratch(es) - Paint
7	Bonnet	Bonnet - Stone chips - Paint
8	Side panel - rear left side	Side panel - Dent / paintcoat damage - Repair and paint
9	Side panel - rear right side	Side panel - Deformed - Repair and paint
10	Vehicle glazing	Windscreen - Broken / torn - Replace

## Wear and tear

No.	Component group	Description
1	Sill - right side	Sill - Dent / paintcoat damage - No deduction
2	Sill - left side	Sill - Dent / paintcoat damage - No deduction

The vehicle shows signs of wear and tear commensurate with its age and use.

## Previous damages

No.	Previous damage	Extent of damage (Net)
1	Side right, Provided by user / customer, from 7 Jan 2026	2.023,64 €
2	Front, Provided by user / customer, from 30 Dec 2025	2.037,11 €

## Repainting

No.	Repainting
1	Side panel - rear right side, Door - rear right side, Professionally carried out

## Order/Scope of Order

An order was placed to prepare a sales report for the described vehicle. This report includes the following:

- Description of key vehicle information
- Documentation of equipment features  
(*Delivery by third-party service providers*)
- Documentation of damage, defects, missing parts
- Documentation of prior damage, unrepaired prior damage, repainting
- A brief visual or functional inspection of the equipment details, if possible.  
(*Functional testing of driver assistance systems is not included in the scope of services!*)
- a photographic documentation of the vehicle



## Basis for the order

This product is based on the guidelines for vehicle returns and valuations published by Alphabet Fleet GmbH. The expert makes the specific findings in each individual case objectively, within the framework of the prescribed standards, based on their own expertise.

The vehicle inspection takes place in a fully assembled, unassembled state.

Damage or defects that can only be detected during disassembly/diagnostic work or through further investigation remain within the realm of prognostic risk. An increased risk exists due to concealed defects caused by fraudulent misrepresentation and which were not identifiable by the expert.

Damage or defects resulting from normal use or wear and tear of the vehicle will be accepted in accordance with the applicable standard.

There was no explicit identification or monetary consideration of the expected features within the product.

Features which, in their nature and extent, slightly exceed normal use but do not constitute unacceptable damage, will be documented and indicated as signs of wear, if applicable.

Damage or defects that, according to the applicable standard, can no longer be attributed to normal use or wear and tear are listed under "Value Reducing Factors" in the product description.

Depending on the product specification, a monetary ID can be provided. If this takes place, the costs can be 100% d or pro rata depending on the vehicle's age and mileage.

## Previous damages

According to available information previous damages were repaired at the vehicle. Traces of repairs, which allow conclusions about the area of repair, were not recognizable during the inspection.



Figure 1: Diagonal front (left)



Figure 2: Diagonal front (right)



Figure 3: Diagonal rear (left)



Figure 4: Diagonal rear (right)

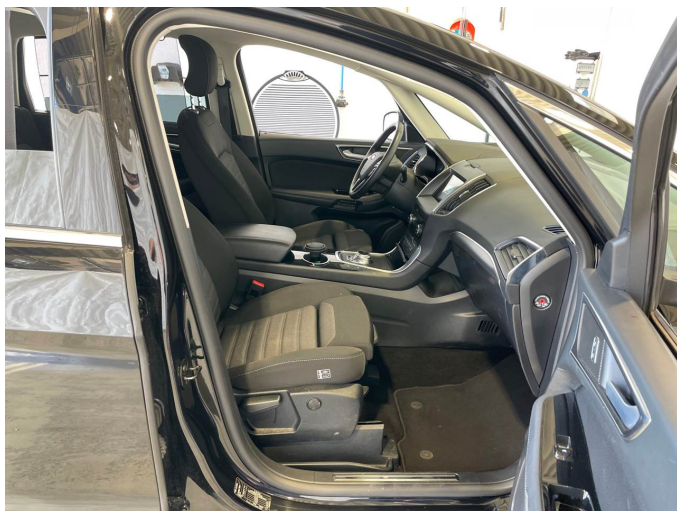


Figure 5: Interior - front



Figure 6: Interior - rear



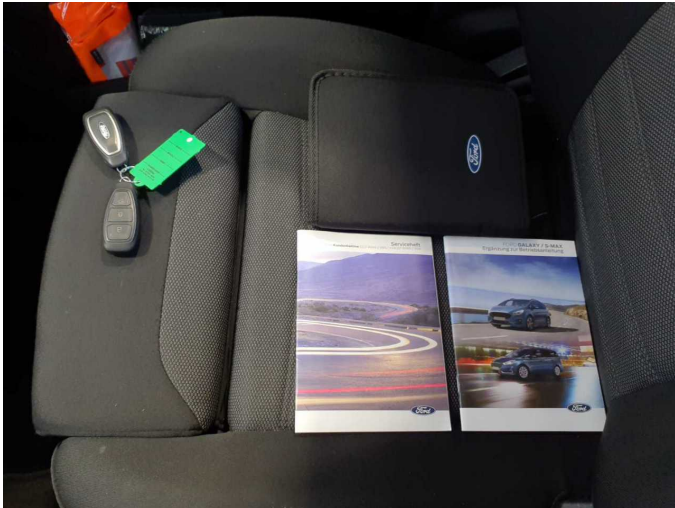


Figure 13: Documents



Figure 14: Navigation



Figure 15: Misc.



Figure 16: Misc.

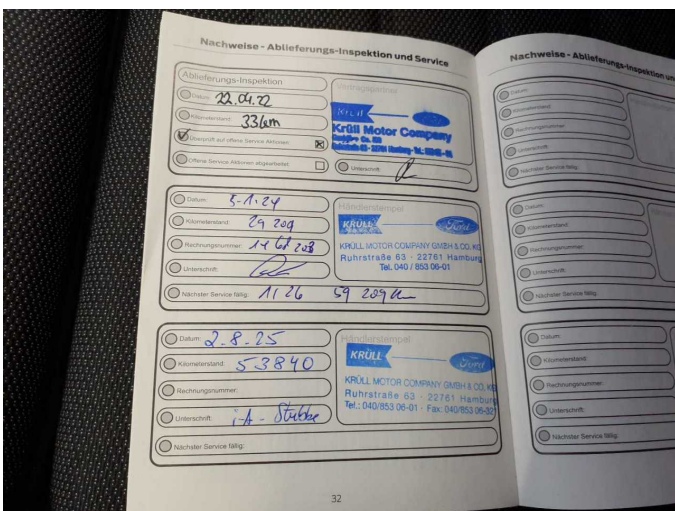


Figure 17: Misc.



Figure 18: Misc.



Figure 19: Misc.



Figure 20: Misc.



Figure 21: Misc.



Figure 22: Misc.



Figure 23: Misc.



Figure 24: Misc.



Figure 25: Misc.



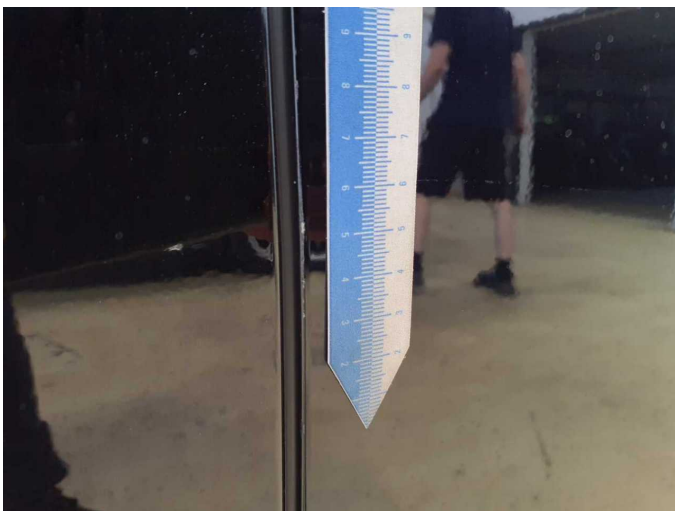
Figure 26: Misc.



Damage 1: Equipment: Tirefit filler - Expired - Replace



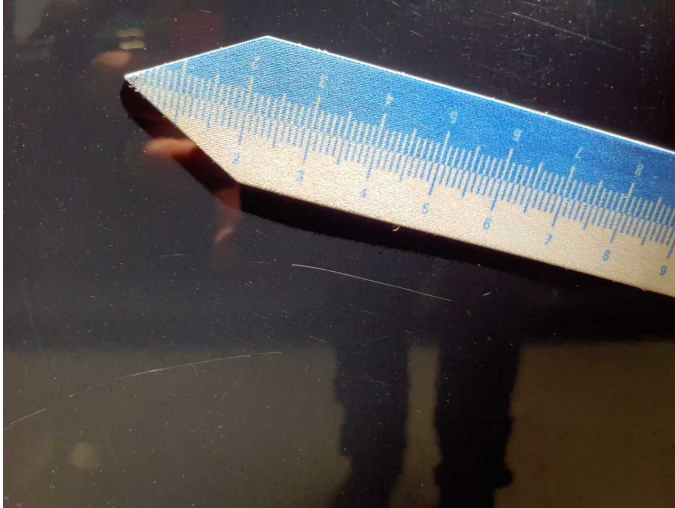
Damage 2: Door - front right side: Door edge - Scratch(es) - Smart repair



Damage 2: Door - front right side: Door edge - Scratch(es) - Smart repair



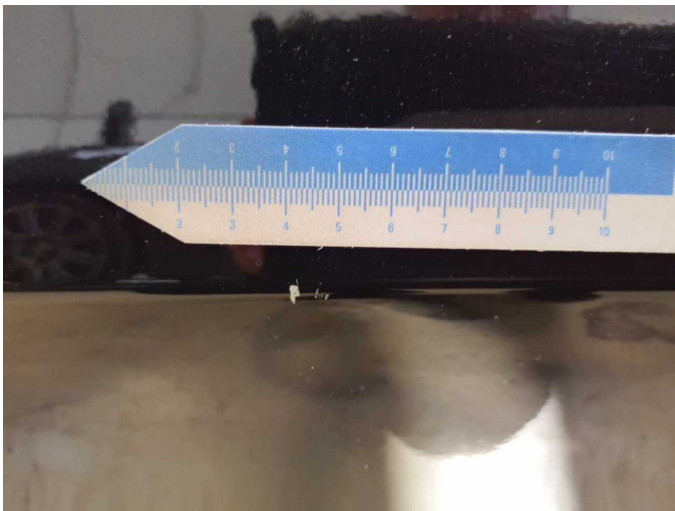
Damage 2: Door - front right side: Door edge - Scratch(es) - Smart repair



**Damage 3:** Door - rear left side: Door - Scratch(es) - Smart repair



**Damage 3:** Door - rear left side: Door - Scratch(es) - Smart repair



**Damage 4:** Door - front left side: Door - Scratch(es) - Smart repair



**Damage 5:** Trim / covers: Cargo area - lining - right side (+ links + Heckklappe) - Scratch(es) - Loss in value



**Damage 5:** Trim / covers: Cargo area - lining - right side (+ links + Heckklappe) - Scratch(es) - Loss in value



**Damage 5:** Trim / covers: Cargo area - lining - right side (+ links + Heckklappe) - Scratch(es) - Loss in value



**Damage 5:** Trim / covers: Cargo area - lining - right side (+ links + Heckklappe) - Scratch(es) - Loss in value



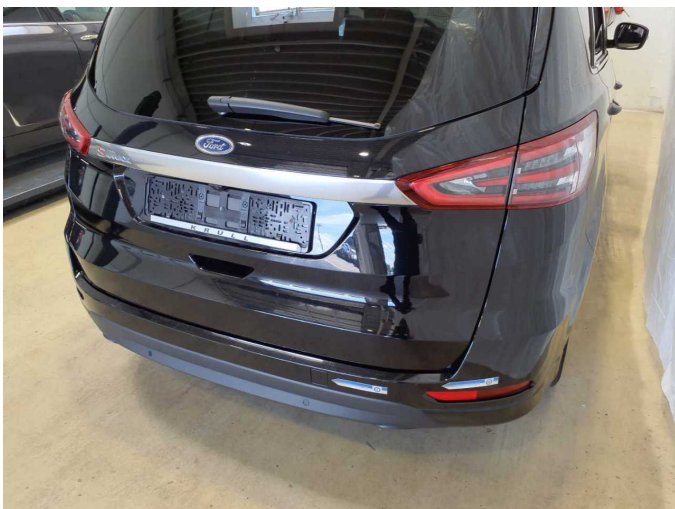
**Damage 5:** Trim / covers: Cargo area - lining - right side (+ links + Heckklappe) - Scratch(es) - Loss in value



**Damage 5:** Trim / covers: Cargo area - lining - right side (+ links + Heckklappe) - Scratch(es) - Loss in value



**Damage 5:** Trim / covers: Cargo area - lining - right side (+ links + Heckklappe) - Scratch(es) - Loss in value



**Damage 6:** Rear bumper: Rear bumper - Scratch(es) - Paint



**Damage 6:** Rear bumper: Rear bumper - Scratch(es) - Paint



**Damage 6:** Rear bumper: Rear bumper - Scratch(es) - Paint



**Damage 6:** Rear bumper: Rear bumper - Scratch(es) - Paint



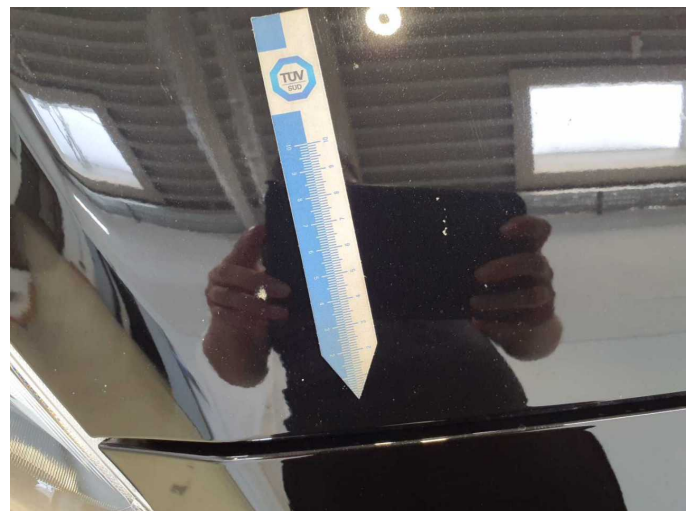
**Damage 6:** Rear bumper: Rear bumper - Scratch(es) - Paint



**Damage 6:** Rear bumper: Rear bumper - Scratch(es) - Paint



**Damage 7:** Bonnet: Bonnet - Stone chips - Paint



**Damage 7:** Bonnet: Bonnet - Stone chips - Paint



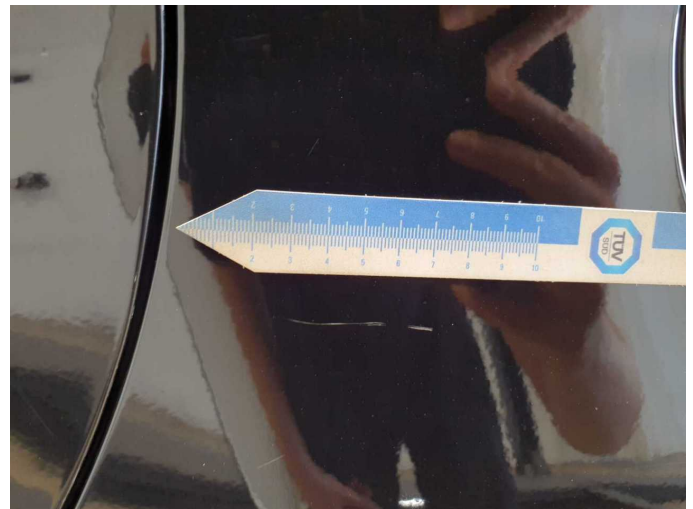
**Damage 7:** Bonnet: Bonnet - Stone chips - Paint



**Damage 7:** Bonnet: Bonnet - Stone chips - Paint



**Damage 8:** Side panel - rear left side: Side panel - Dent / paintcoat damage - Repair and paint



**Damage 8:** Side panel - rear left side: Side panel - Dent / paintcoat damage - Repair and paint



**Damage 8:** Side panel - rear left side: Side panel - Dent / paintcoat damage - Repair and paint



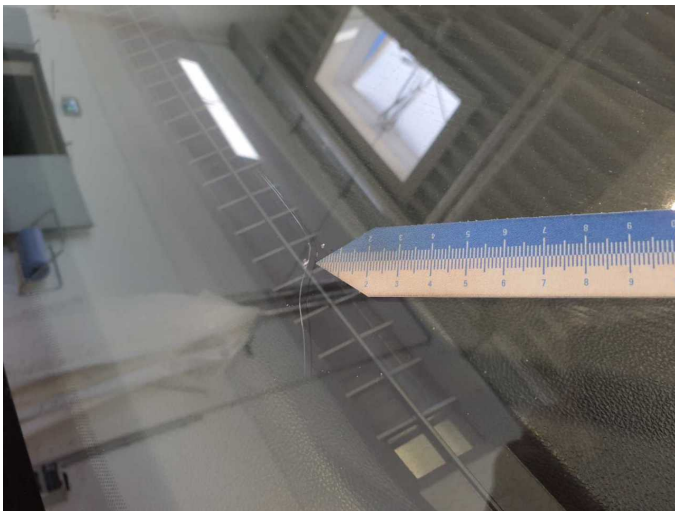
**Damage 9:** Side panel - rear right side: Side panel - Deformed - Repair and paint



**Damage 9:** Side panel - rear right side: Side panel - Deformed - Repair and paint



**Damage 9:** Side panel - rear right side: Side panel - Deformed - Repair and paint



**Damage 10:** Vehicle glazing: Windscreen - Broken / torn - Replace



**Damage 10:** Vehicle glazing: Windscreen - Broken / torn - Replace



**Repainting 1:** Side panel - rear right side, Door - rear right side



**Repainting 1:** Side panel - rear right side, Door - rear right side



**Repainting 1:** Side panel - rear right side, Door - rear right side



**Repainting 1:** Side panel - rear right side, Door - rear right side