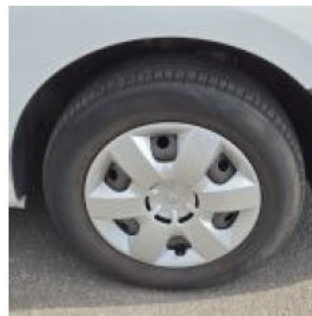
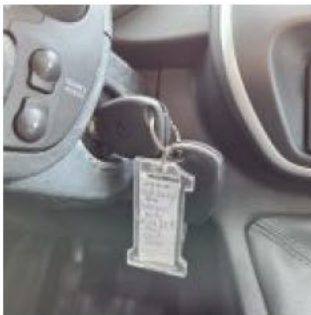


· 1.5 Energy dCi 90pk Start & Stop Work Edition · 8 May 2026 ·

Specifications

License Plate Number		Cylinder Capacity	1.461 ^{cm³}
Manufacturer	RENAULT	Transmission Type	Handmatig geschakelde transmissie5
Model	Kangoo	MOT	08-10-2026
Model Versions	1.5 Energy dCi 90pk Start & Stop Work Edition	First Admission	04-07-2019
Body Type	VAN	First Registration	29-01-2021
Color	White	License Plate 1a Available	
Paint Type	Matte	VAT/Marge	BTW
Production Year	2019	Odometer	117.144 ^{Km}
KW	66	Numer Of Keys	2
Fuel Type	Diesel	Interior	Darkgrey - Cloth
VIN	VF1FWD1J163728307	Number Headrests	2

Images





Accessories

ABS

Airbags

ASR

Audio System

Bluetooth car kit

Central door locking

Cruise control

Electric windows front

Electrically adjustable exterior mirrors

ESP

Floor plate

Manual air conditioning

Slat to slat paneling

Steering wheel multifunction

Condition

Condition exterior Adequate

Condition interior Adequate

Last Maintenance Unknown

Previous Repairs Unknown

Tire Specifications

Tire	Profile	Brand	Width	Aspect Ratio	Radial	Type
Front Left	5 ^{mm}	Landsail	195 ^{mm}	65 ^{mm}	15 ^{inch}	Summer
Rear Left	4 ^{mm}	Laufenn	195 ^{mm}	65 ^{mm}	15 ^{inch}	All Season
Front Right	5 ^{mm}	Landsail	195 ^{mm}	65 ^{mm}	15 ^{inch}	All Season
Rear Right	4 ^{mm}	Laufenn	195 ^{mm}	65 ^{mm}	15 ^{inch}	All Season
Spare Tire Type	Fully Fledged					
Spare Tire Profile	3 ^{mm}					

Damages



Damage Part

Damage Type

Repair Type

Acceptable

Wheelcover - Right Rear

Scratch(es)

Replace

No



Damage Part

Damage Type

Repair Type

Acceptable

Cargodoor - Right

Dent(s) & Scratch(es)

Panelbeating & Spray

No



Damage Part

Damage Type

Repair Type

Acceptable

Fender - Rear Left

Dent(s)

Panelbeating & Spray

No



Damage Part

Damage Type

Repair Type

Acceptable

Cargohold

Damaged

Spray

No



Damage Part

Damage Type

Repair Type

Acceptable

Other

Stickers

Remove

No



Damage Part

Damage Type

Repair Type

Acceptable

Wheelcover - Left Rear

Scratch(es)

Replace

No



Damage Part

Frontdoor - Left

Damage Type

Dent(s)

Repair Type

Panelbeating & Spray

Acceptable

No



Damage Part

Wheelcover - Left Front

Damage Type

Scratch(es)

Repair Type

Replace

Acceptable

No