

Expertise

Protocol number: 45445492
Order No. / Reference: 26215620
Inspection date: 12 May 2026

Manufacturer: Kia

Model: Niro 1.6 GDI PHEV 2WD OPF Aut. Vision

VIN: KNACS81FGP5054203



Vehicle details

Manufacturer / Type / Model / Equipment

Kia Niro 1.6 GDI PHEV 2WD OPF Aut. Vision

Vehicle Identification number KNACS81FGP5054203

Mileage (Read) 79,296 km

First registration 12 Dec 2022

Number of holders 1

Power / Engine displacement 77 kw / 1,580 ccm

Fuel type / Cylinder Hybr.B/E ext.aufll / 3

Gearbox / Number of gears Automatic / 6

Type of drive Front drive

Type of vehicle Saloon car

Colour / colour code Stahlgrau Metallic

Doors / Seats 5 / 5

Upholstery type Cloth / leather
combination

Colour of upholstery Black-Grey



Vehicle details

Maintenance booklet / proof	digital proof / complete	Next maintenance in	218 Tag(e)
Last service on / at	12/2025 at 75,783 km		
Key is / should be	2 / 2	FZG documents	ZB#2 (B) was available (copy), ZB#1 (S) was not available.
		Letter No.	GS805940
Previous damage / Accident	Detectable	Repainting	None detectable
Inspection conditions	sufficient	Lifting equipment / pit	yes
Test drive	Not performed	Engine function test	Performed
Manufacturer key number/ type code number	2233 / ABO 00002		
Emission standard	EURO6;WLTP;AP;PI/CI; M, N1 I	fine dust sticker	
Permitted total weight	2,060 kg	Empty weight	

Tyres

Mounted tyres

#	Tyre size	Type of tyre	Manufacturer	Tread depth
1)	205/60 R16 96V	All-season tyres on Light alloy	Goodyear	6mm / 6mm
2)	205/60 R16 96V	All-season tyres on Light alloy	Goodyear	6mm / 6mm

Replacement

Typ	Tyre size	Type of tyre	Manufacturer	Tread depth
	Tirefit	Expiration date 08/2027		

Legend: Tread depth information for the left tire is listed first, for the right tire it is listed second on the axle in the direction of travel.



Equipment

Standard equipment

- Airbag: 1 knee airbag (driver's side)
- Airbag: 2 side airbags
- Airbag: Center airbag
- Anti-lock braking system (ABS)
- Electrically folding exterior mirrors
- Electrically adjustable exterior mirrors
- Hill start assist
- Front overhead console with reading lights
- Third brake light with LED
- twilight sensor
- Electric windows, front and rear
- High Beam Assist (HBA)
- Front collision warning system, extended with turning function
- Floor mats
- Luggage net loops in the luggage compartment
- Luggage compartment lighting
- Cruise control, adaptive and navigation-based
- Back window, heater
- Interior rearview mirror self-dimming (electrochromatic)
- Intelligent speed assistant
- ISOFIX mounts on outer rear seats
- Kia map navigation with a 26 cm (10.25 inch) screen diagonal
- Headrests on all seats are height-adjustable.
- Steering wheel: Steering wheel adjustable for height and reach
- front center armrest
- LED fog lights
- Kia Connect online services
- Electronic parking brake with auto-hold function
- Front parking sensors
- Cross-traffic alert
- Radio accessories: 6 speakers
- Radio accessories: Digital radio reception (DAB/DAB+)
- Radio accessories: Smartphone interface Apple CarPlay and Android Auto
- Tire pressure monitoring system (TPMS)
- Wheels: Tire repair kit
- LED taillights
- Power steering
- Seat: Passenger seat height adjustable
- Seat: Front seat heating
- Sun visors with illuminated makeup mirrors
- Lane keeping assist with visual/acoustic warning signal
- LED daytime running lights
- USB charging ports on the sides of the front seats (one each)
- thermal insulation glazing
- Auxiliary heater, electric
- Airbag: 2 front airbags
- Airbag: 2 curtain airbags
- Ambient lighting in the dashboard
- Highway assistant
- Electrically heated exterior mirrors
- Exterior mirrors with integrated LED turn signals
- On-board computer
- Decorative inlays, marble look (grey)
- Drive Mode Select
- Electronic Stability Program (ESP) with TCS (Traction Control)
- Forward Collision Warning (FCA) with brake intervention and pedestrian and cyclist detection
- Headlights with halogen technology
- Gear selector rotary switch (shift by wire)
- luggage compartment cover
- Speed limiter
- 6-speed dual-clutch transmission
- rear window wiper
- Integrated panoramic display with fully digital instrument cluster
- Insulating glazing for the windshield
- Child safety locks on the rear doors
- Automatic air conditioning
- Steering wheel in high-quality imitation leather
- Steering wheel: Heated multifunction steering wheel
- Armrest - centre, rear
- Driver Alert System (DAW)
- Emergency call service eCall
- Gasoline particulate filter (GPF)
- Rear parking sensors
- Upholstery: Fabric-leather combination (with high-quality imitation leather)
- Radio accessories: Bluetooth hands-free system with voice recognition
- Radio accessories: USB port
- Rain sensor
- Wheels: 16" alloy wheels
- Rear view camera
- Rear seat backrest asymmetrically split (60:40), foldable
- Seat belts
- Seat: Driver's seat height adjustable
- Smart key and start button
- Lane Follow Assist (LFA)
- SUV design elements
- Blind spot assist with steering and braking intervention
- USB charging port in the center console
- Electronic immobilizer
- Central locking with remote control



Extra equipment

- All-weather tires including installation
- Charging cable Type 2 to Type 2 plug
- Package: P2 - Style Package (Dual LED headlights (low and high beam) - Privacy glass (dark tinted windows from the B-pillar))
- Paint finish: Metallic paint
- Package: P1 - Comfort Package (Driver's seat with lumbar support, electrically adjustable - Inductive charging station for smartphones)

Brief expert findings

Documents submitted	At the time of the inspection, the vehicle registration certificate Part 2 (title) was available, but the vehicle registration certificate Part 1 (document) was not. (Copy)
VIN comparison	The vehicle identification number (VIN) was read from the vehicle and its conformity with the submitted documents was confirmed by the undersigned during the inspection.
Inspection	The inspection conditions were sufficient for the assessment of the vehicle. Lifting equipment and/or a pit were available for examining the vehicle.
Test drive	No test drive/shunting maneuver was carried out during the inspection of the vehicle.
Engine function test	An engine test run was performed.

Value reducing factors

No.	Component group	Description
1	Door - rear right side	Door - dent(s) - Smooth repair work
2	Boot lid / rear door	Boot lid - Scratch(es) - Smart repair
3	Side panel - rear left side	Side panel - Scratch(es) - Smart repair
4	Side panel - rear right side	Sill - Dent / paintcoat damage - Smart repair
5	Bonnet	Bonnet - Dent / paintcoat damage - Repair and paint

Wear and tear

No.	Component group	Description
1	Body	Underbody panelling - Damaged - No deduction

The vehicle shows signs of wear and tear commensurate with its age and use.

Previous damages

No.	Previous damage	Extent of damage (Net)
1	Rear, Provided by user / customer, from 25 Nov 2025	4.722,64 €

Accident damages

No.	Accident
1	Front, Side right



Order/Scope of Order

An order was placed to prepare a sales report for the described vehicle. This report includes the following:

- Description of key vehicle information
- Documentation of equipment features
(Delivery by third-party service providers)
- Documentation of damage, defects, missing parts
- Documentation of prior damage, unrepaired prior damage, repainting
- A brief visual or functional inspection of the equipment details, if possible.
(Functional testing of driver assistance systems is not included in the scope of services!)
- a photographic documentation of the vehicle

Basis for the order

This product is based on the guidelines for vehicle returns and valuations published by Alphabet Fleet GmbH. The expert makes the specific findings in each individual case objectively, within the framework of the prescribed standards, based on their own expertise.

The vehicle inspection takes place in a fully assembled, unassembled state.

Damage or defects that can only be detected during disassembly/diagnostic work or through further investigation remain within the realm of prognostic risk. An increased risk exists due to concealed defects caused by fraudulent misrepresentation and which were not identifiable by the expert.

Damage or defects resulting from normal use or wear and tear of the vehicle will be accepted in accordance with the applicable standard.

There was no explicit identification or monetary consideration of the expected features within the product.

Features which, in their nature and extent, slightly exceed normal use but do not constitute unacceptable damage, will be documented and indicated as signs of wear, if applicable.

Damage or defects that, according to the applicable standard, can no longer be attributed to normal use or wear and tear are listed under "Value Reducing Factors" in the product description.

Depending on the product specification, a monetary ID can be provided. If this takes place, the costs can be 100% or pro rata depending on the vehicle's age and mileage.

Previous damages

Non-repaired previous damages were found at the vehicle. The necessary repair costs are listed in the expert report or if necessary, are listed in detail in a separately enclosed repair cost calculation.



Figure 1: Diagonal front (left)



Figure 2: Diagonal front (right)



Figure 3: Diagonal rear (left)



Figure 4: Diagonal rear (right)

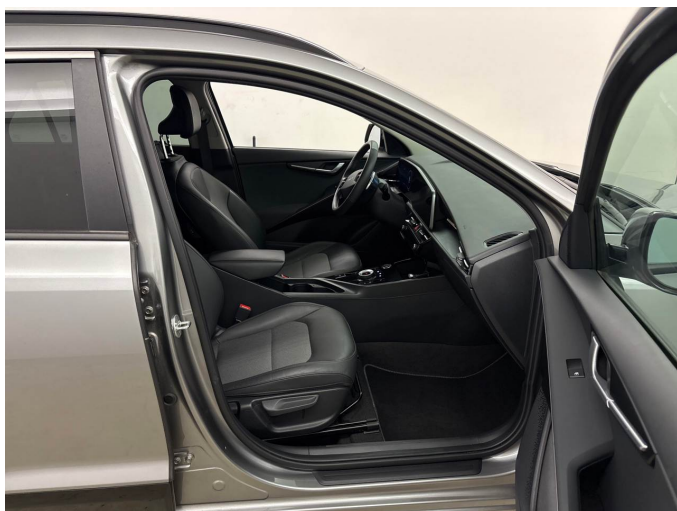


Figure 5: Interior - front



Figure 6: Interior - rear



Figure 7: Instrument cluster



Figure 8: Instrument panel



Figure 9: Interior 360° view

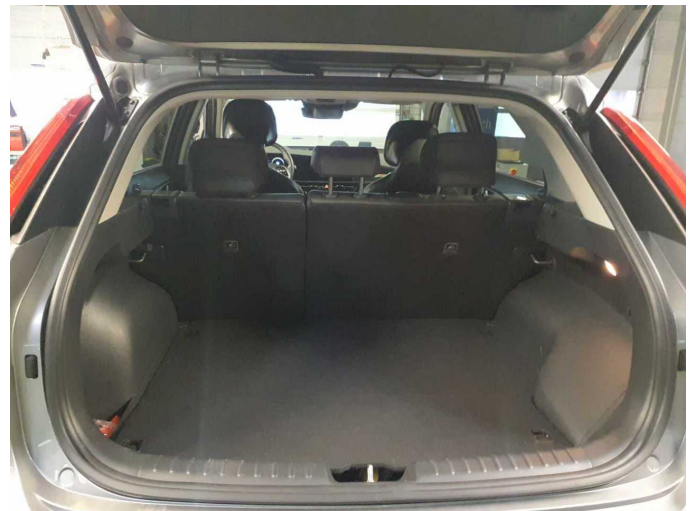


Figure 10: Cargo area



Figure 11: VIN



Figure 12: Mounted tyres



Figure 13: Documents



Figure 14: Navigation



Figure 15: Misc.

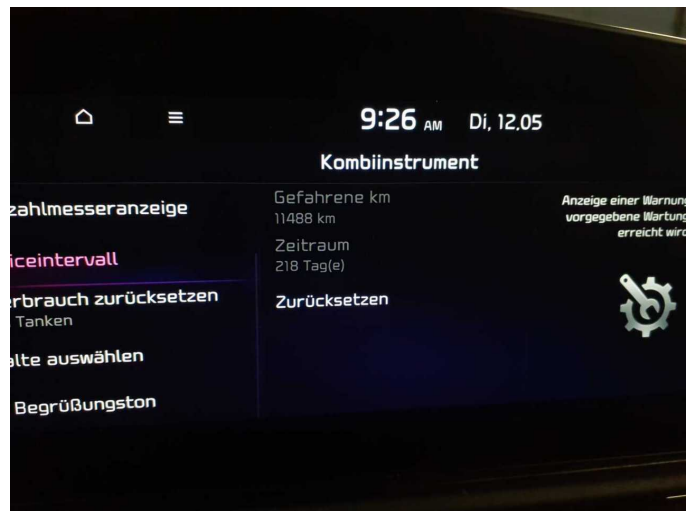


Figure 16: Misc.

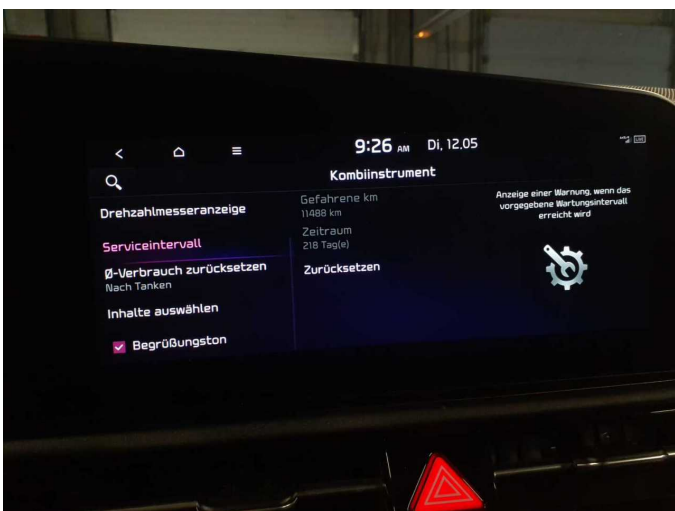


Figure 17: Misc.

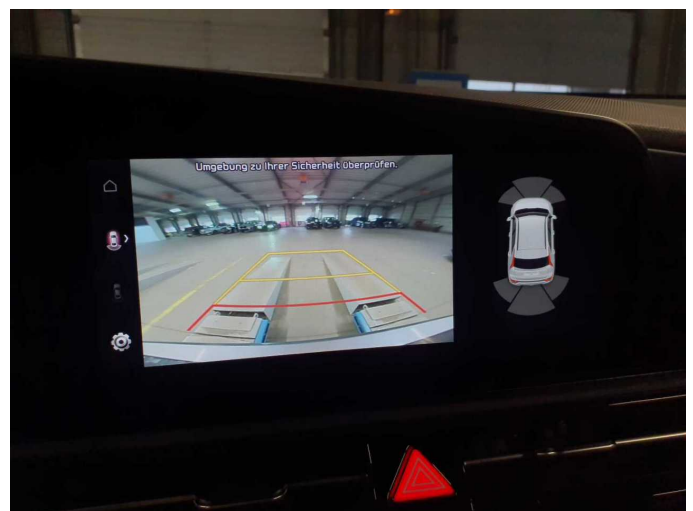


Figure 18: Misc.



Figure 19: Misc.



Figure 20: Misc.



Figure 21: Misc.



Figure 22: Misc.



Figure 23: Misc.

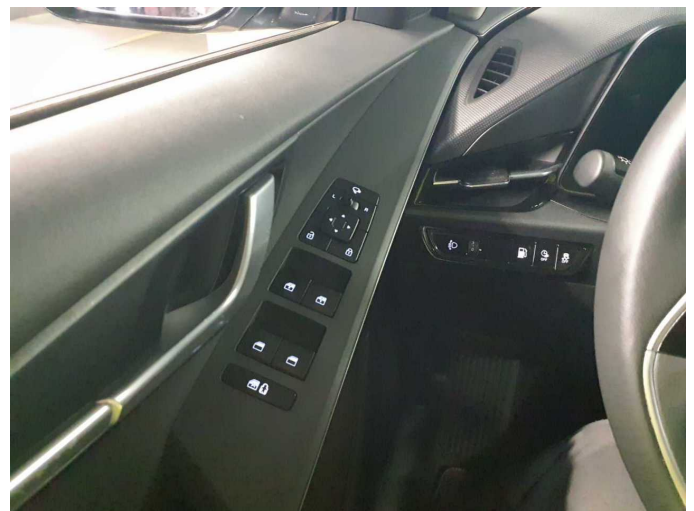


Figure 24: Misc.



Figure 25: Misc.



Figure 26: Misc.

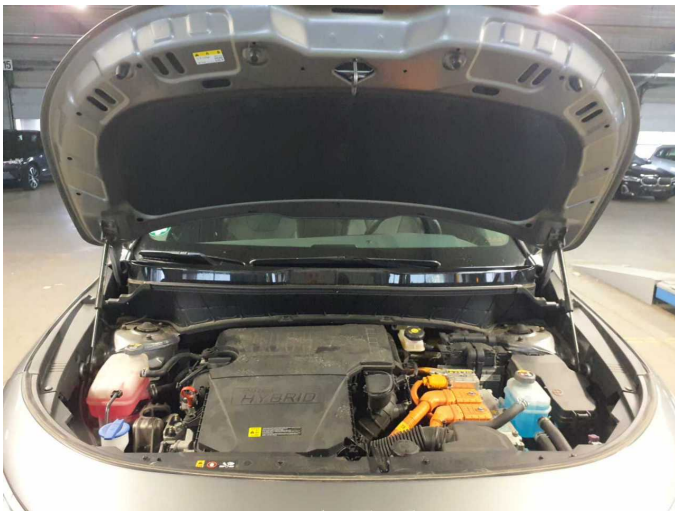


Figure 27: Misc.



Figure 28: Misc.



Figure 29: Misc.



Figure 30: Misc.



Figure 31: Misc.

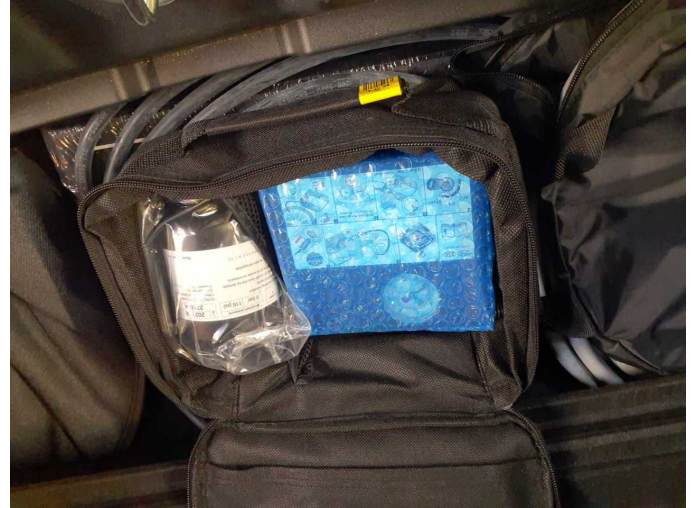


Figure 32: Misc.



Figure 33: Misc.



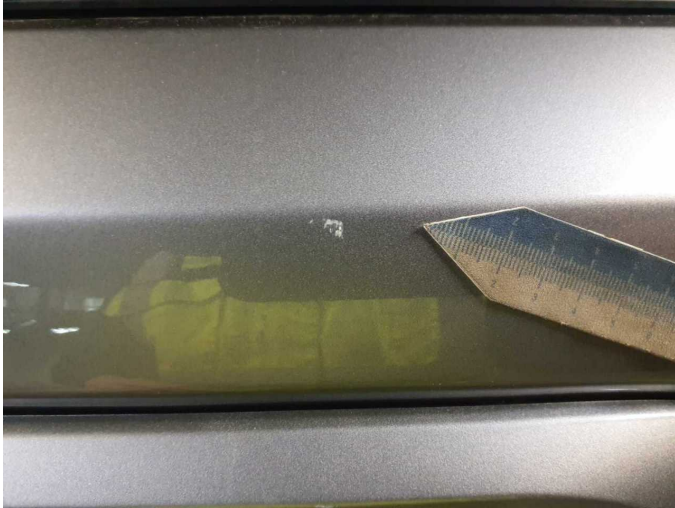
Damage 1: Door - rear right side: Door - dent(s) - Smooth repair work



Damage 1: Door - rear right side: Door - dent(s) - Smooth repair work



Damage 2: Boot lid / rear door: Boot lid - Scratch(es) - Smart repair



Damage 2: Boot lid / rear door: Boot lid - Scratch(es) - Smart repair



Damage 3: Side panel - rear left side: Side panel - Scratch(es) - Smart repair



Damage 3: Side panel - rear left side: Side panel - Scratch(es) - Smart repair



Damage 4: Side panel - rear right side: Sill - Dent / paintcoat damage - Smart repair



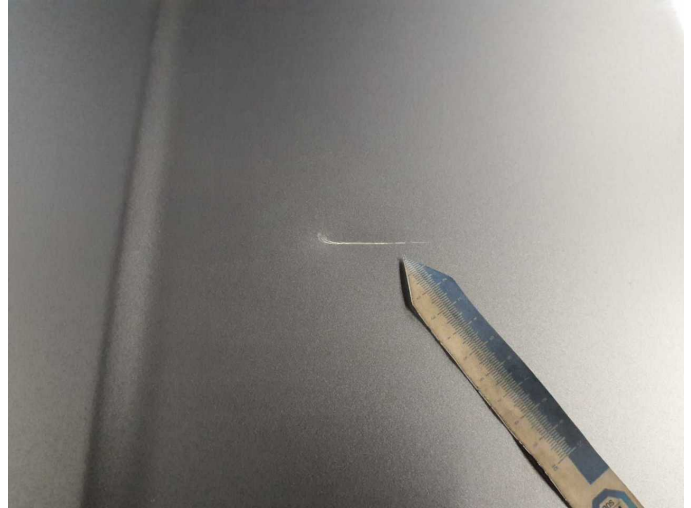
Damage 4: Side panel - rear right side: Sill - Dent / paintcoat damage - Smart repair



Damage 4: Side panel - rear right side: Sill - Dent / paintcoat damage - Smart repair



Damage 5: Bonnet: Bonnet - Dent / paintcoat damage - Repair and paint



Damage 5: Bonnet: Bonnet - Dent / paintcoat damage - Repair and paint



Damage 5: Bonnet: Bonnet - Dent / paintcoat damage - Repair and paint



Damage 5: Bonnet: Bonnet - Dent / paintcoat damage - Repair and paint



Wear and tear 1: Body: Underbody panelling - Damaged - No deduction



Wear and tear 1: Body: Underbody panelling - Damaged - No deduction



Accident 1: Front, Side right



Accident 1: Front, Side right



Accident 1: Front, Side right



Accident 1: Front, Side right



Accident 1: Front, Side right



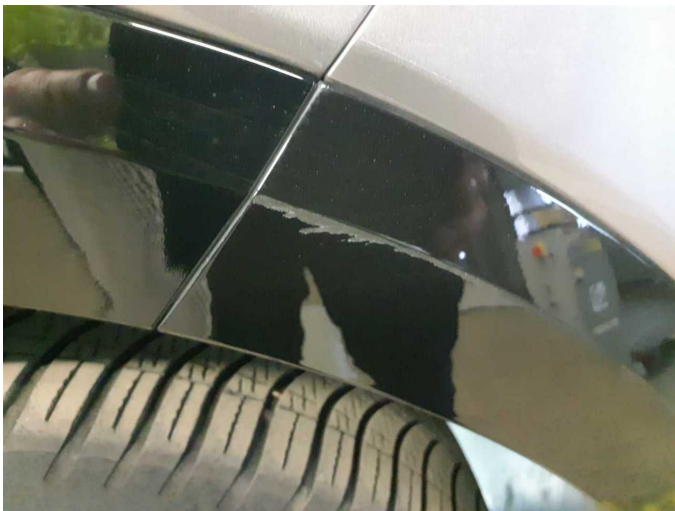
Accident 1: Front, Side right



Accident 1: Front, Side right



Accident 1: Front, Side right



Accident 1: Front, Side right



Accident 1: Front, Side right



Accident 1: Front, Side right



Accident 1: Front, Side right



Accident 1: Front, Side right



Accident 1: Front, Side right



Accident 1: Front, Side right



Accident 1: Front, Side right



Accident 1: Front, Side right



Wartungshistorie

(gemäß Auftraggeber Informationen)

Fahrgestellnummer: KNACS81FGP5054203

Hersteller / Modell: KIA KIA Niro 1.6 GDI PHEV 2WD OPF Aut. Vision

Datum	KM-Stand	Beschreibung
16.12.2025	75.783	Luftfiltereinsatz ern; Motoröl b. Wartung; Ölfilter ern; Regelwartungsdienst; Wartung Sonstiges
11.03.2025	53.546	Motoröl b. Wartung; Regelwartungsdienst
30.04.2024	33.303	Bremsflüssigkeit; Bremsflüssigkeit ern; Motoröl b. Wartung; Ölfilter ern; Regelwartungsdienst; Wartung Sonstiges
18.08.2023	15.575	Motoröl b. Wartung; Ölfilter ern; Regelwartungsdienst; Wartung Sonstiges