

» Overview

Order number: 1002367265
Order completed: 24.04.2026 11:25
Report number: 10499459
VIN: WVVZZZCD8RW846631



Front Left 3/4



Rear Right 3/4



Mileage

» Vehicle Data

Vehicle category:	Passenger Car
Vehicle type:	EstateCar
Make:	Volkswagen
Model:	Golf
Manufacturers and type code:	0603 / CNM
Date of first registration:	15.04.2024
Mileage:	63,267 km
Proof of mileage:	ReadOff
Exterior colour:	Uranograu
Roof colour:	Uranograu
Propulsion:	Front
Fuel:	Diesel
Engine size (cc):	2,000 ccm
Performance:	85 kW (116 PS)
Length:	
Height:	
Width:	
Permitted total weight:	
Wheelbase:	
Number of powered axles:	2
Cylinders:	4
Euronorm:	Euro 6
Number of doors:	4
Number of seats:	5
Gearbox:	Manual 6-speed
Upholstery type:	Lining fabrics
Interior colour:	Soul-Schwarz/Soul-Schwarz/Schwarz/ Storm Grey
Number of keys:	2

» Documents & Maintenance

Statutory inspection date:	04.2027
Registration certificate available:	No
Registration certificate received:	No
License plate:	None
Maintenance book:	Digital
Maintenance:	Not testable
Maintenance last date:	
Maintenance last mileage:	
Remainder until next maintenance:	1,000 KM

10-color ambient lighting	Driving on the right
12-V outlet in luggage compartment	Dynamic headlight range control
2 LED reading lights in front and 2 in rear	Dynamic Road Sign Display
2 USB-C ports in the front, 2 USB-C charging sockets on the center console in rear, charging capacity up to 45 W	Electric auxiliary air heater
3 head restraints in rear	Electromechanical parking brake with Auto Hold function
3-point seat belts for the outer rear seats	Electromechanical speed-sensitive power steering
3-point seat belts in front with height adjustment and seat belt pretensioners	Electronic differential lock XDS
4 alloy wheels "Norfolk" 7J x 16	Electronic engine sound
4-cylinder diesel engine 2.0 l	Electronic immobilizer
4-cylinder diesel engine 2.0 l TDI, 85 kW	Electronic restriction of top speed
6+1 speakers	Electronic Stability Control and electromechanical brake booster
6-speed manual transmission	Elimination of nameplate for engine designation on luggage compartment lid
Air conditioning system Climatronic with enhanced air filter with activated carbon	Emergency call service, 10-year contract duration as of initial delivery, condition: mob. phone network available
Alternator 140 A	Emission standard EU6 AP
App-Connect Wireless for Apple CarPlay and Android Auto	Equipment options subset for Germany
Auto. Emergency Braking Front Assist with Pedestrian and Cyclist Monitoring	Ext. mirrors, power-adjustable and heated, with memory feature and front passenger ext. mirror lowering function
Automatic headlight control with LED separate daytime running light and entry and exit lighting	Extended pedestrian protection
Basic equipment variant	Exterior mirrors: aspherical on driver side, convex on front passenger side
Battery 420 A (70 Ah)	First aid kit, warning triangle and safety vest
Black roof rails	Front center armrest, height- and longitudinally adjustable
Body-colored bumpers	Front seats with height adjustment
Body-colored exterior mirror housings and door handles	Front stabilizer bar
Car2X	Front-wheel drive
Carpet mats in front and rear	Fuel system for diesel engine
Chrome elements on power mirror and window regulator switches, chrome trims on the vents	Gearshift knob in leather
Comfort equipment	Green heat-insulating glass windows on sides and in rear
Comfort seats in front	Headliner
Curtain airbags in front and rear, side airbags in front, center airbag	Highway light
Decorative inserts "Nature Cross Brushed" for dashboard and front door trim panels	Illuminated door handle recesses
Delivery with snow tires	Illuminated vanity mirrors in sun visors
Digital radio reception DAB+	Initial standard fuel filling
Dimming interior rearview mirror	Inserts of front seats and outer rear seats in fabric "Life"
Disc brakes in front	Instrument cluster with electronic speedometer, odometer and trip odometer, tachometer
Disc brakes in rear	ISOFIX anchors for child seats on outer rear bench seats and on front passenger seat, compatible for i-Size
Diversity antenna for FM reception	Keyless Start without SAFELOCK
Door and side trim panel	Laminated safety glass windshield, heat- and sound-insulating
Driver alert system	Lane keeping system Lane Assist
Driver and front passenger airbag with front passenger airbag deactivation	Leather multi-function steering wheel
	LED headlamps

LED rear combination lamps	Standard paint coating
Left-hand drive	Standard pedal cluster
LongLife Service Regime	Standard rear axle
Lumbar supports in front	Standard roof
Manual in German (Germany)	Standard wheel bolts
Manual transmission MQ281	Start-stop system with regenerative braking
Mobile phone interface with inductive charging feature	Surround lighting with welcome light
Multi-color Digital Cockpit Pro, selection of different info profiles possible	Suspension range 06 installation control only, no requirement forecast
Multifunction camera	Tailgate/trunk lid unlocking from outside
Navigation system "Discover Media" incl. Streaming & Internet	Tire Mobility Set: 12-volt compressor and tire sealant
Net partition	Tire Pressure Monitoring System
No special edition	Tires 205/55 R16
No special purpose vehicle, standard equipment	Tool kit and jack
Non-folding front passenger seat backrest	Transport protection film (minimum protection) with additional transport protection measures
Non-smoker's package: Storage compartment and 12-V outlet in front	Two-tone horn
Not hot country	Type approval country Germany
Oncoming vehicle braking when turning and swerve support	Unsplit rear bench seat, asymmetric split folding backrest, with center armrest
Online service, with OCU, with head unit coding, without engine immobilizer interconnection	UWB-capable country and carrier frequency, 433.92 to 434.42 MHz
Operating permit, alteration	Vehicle class differentiation -5H0-
Operating voltage 12 V	Vehicles without special upgrade measures
Park Distance Control - warning signals for obstacles in the front and rear	Wagon
Part set without country-specific prescriptive standard	Warning signal and warning light for front and rear seat belts not fastened
Preparation for We Connect and We Connect Plus or VW Connect and VW Connect Plus	Weight range 7 installation control only, no requirement forecast
Radio	Wheelbase
Rear exhaust tailpipe (standard)	Windshield wiper intermittent control with light sensor
Rear floor panel module, type 4	Winter wheels (additional) 4 steel wheels 6.5J x 16 snow tires 205/55 R16 H
Rear fog light on one side, back-up light on both sides	Winter wheels (additional) 4 steel wheels 6.5J x 16, snow tires 205/55 R16 H, wheel trims
Rear shock absorption, basic version 1	Without activated carbon canister with SCR
Refrigerant R1234yf	Without Adaptive Chassis Control
Regional code " ECE " for radio	Without additional decorative trims
Remote unlocking for rear seat backrest	Without additional front underbody guard
Safety-optimized front head restraints	Without alcohol interlock
Service indicator 30 000 km or 2 years (variable)	Without alternative drive system
Shock absorption in front	Without auxiliary heater/parking heater
Small navigation system M&I (Media & Internet package)	Without camera systems/accident sensors
Special identification label for EC for M1 passenger vehicles	Without charging cable
Speed limiter in combination with online services	Without curb weight range
Standard battery/alternator capacity	Without decals and emblems
Standard climatic zones	Without electric motor (hybrid)
Standard engine starter	Without extended safety system
Standard manufacturing sequence	

Without fire extinguisher
Without headlamp washer system, without washer fluid level indicator
Without head-up display
Without heated washer nozzles
Without hill start assist/hill descent control/comfort driving assist
Without interior light in footwell
Without lane change assist
Without light control
Without locking and starting systems
Without mode 3 charging cable
Without preparation for rotating beacon/siren combination
Without preparation for two-way radio installation
Without rear stabilizer bar
Without seat heater
Without seat ventilation/massage seat
Without second battery
Without special body measures
Without speed limiter
Without trailer hitch
Without UN-ECE cybersecurity & software update
Without voice control

» Tyres

MOUNTED TYRES

Make	Location	Position	Type	Rim	Dimensions	Profile depth
Nexen	Front	Left	Winter	Steel	205/55 R 16 91 H	5.0 mm
Nexen	Front	Right	Winter	Steel	205/55 R 16 91 H	5.0 mm
Nexen	Rear	Left	Winter	Steel	205/55 R 16 91 H	6.0 mm
Nexen	Rear	Right	Winter	Steel	205/55 R 16 91 H	6.0 mm

Roadworthy: Yes

UNMOUNTED TYRES

Make	Location	Position	Type	Rim	Dimensions	Profile depth
Nexen			Summer	Aluminium	205/55 R 16 91 V	5.0 mm
Nexen			Summer	Aluminium	205/55 R 16 91 V	5.0 mm
Nexen			Summer	Aluminium	205/55 R 16 91 V	5.0 mm
Nexen			Summer	Aluminium	205/55 R 16 91 V	5.0 mm

Permitted: Yes

Roadworthy: No

SPARE/EMERGENCY TYRE & ACCESSORIES

Toolkit present: Yes

Repair kit present: Yes

Repair kit expiration date: 01.2028

Compressor present: Yes

Jack present: Yes

» Devaluation Factors

Nr	Location	Damage type	Repair type
1	Tyre FR	Tear	Replace

» Usage Damages

Nr	Location	Damage type	Repair type
1	Bumper F	Stone chip(s)	Acceptable
2	Boot lid covering R	Scratch(es)	Acceptable

» Commercial devaluation

Known previous damages:	No
Previous damages detectable:	No
Repainting present:	No
Paint thickness measurement performed:	Yes - no abnormalities/deviations

PAINTHICKNESS MEASUREMENT RESULTS

The measured values were in the usual range.

At least 3 measurements were carried out per component.

» Notes On The Assessment

Details of the assignment and the scope of the assessment:

The order was placed to prepare a condition report on the described vehicle.

The vehicle condition assessment was carried out in accordance with the order on the basis of the standards for vehicle assessments specified by the client. The expert makes the findings in the individual case on the basis of his own expertise and at his own expert discretion.

Vehicle identification:

WVWZZZCD8RW846631

VIN checked and matches documentation

Vehicle condition:

Cleaned

Inspection condition:

Sufficient

Lifting platform/lifting equipment used:

No

Testdrive carried out:

No

Engine test carried out:

Yes

» **Remarks**

This copy was generated electronically. It is valid without an original signature.

» Commercial Pictures



Front Left 3/4



Front Right 3/4



Rear Left 3/4



Rear Right 3/4



Mileage



Tools



Sill outer L



Sill outer R



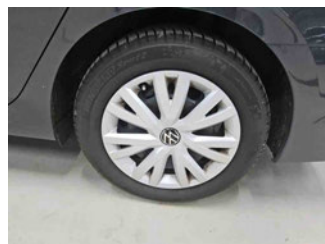
Chassis nr



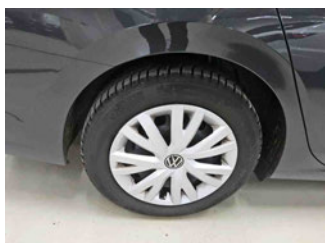
Wheel FL



Wheel FR



Wheel RL



Wheel RR



Additional wheel 1



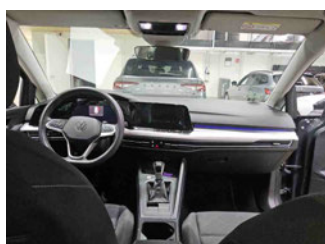
Additional wheel 2



Additional wheel 3



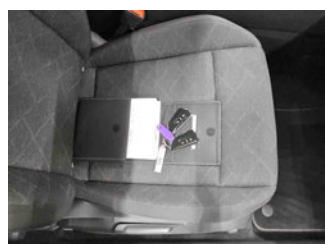
Additional wheel 4



Central console



Engine compartment



Documents



Interior arrangement



Tyres in vehicle



History Maintenance



Interior - front



Interior - rear



Tirefit expiration date



GPS/Radio

» Devaluation Damages

DEVALUATION FACTORS

1 - Tyre FR - Tear - Replace



USAGE DAMAGES

1 - Bumper F - Stone chip(s) - Acceptable



2 - Boot lid covering R - Scratch(es) - Acceptable

