

## Expertise

Protocol number: 46083644  
Order No. / Reference: 26451694  
Inspection date: 19 Jun 2026

Manufacturer: Opel

Model: Vivaro 2.0 D Cargo L EHZ Autm. Elegance

VIN: VXEVFEHZ7N7039901



### Vehicle details

#### Manufacturer / Type / Model / Equipment

Opel Vivaro 2.0 D Cargo L EHZ Autm. Elegance

**Vehicle Identification number** VXEVFEHZ7N7039901

**Mileage (Read)** 46,235 km

**First registration** 29 Jul 2022

**Number of holders** 1

**Power / Engine displacement** 130 kw / 1,997 ccm

**Fuel type / Cylinder** Diesel / 4

**Gearbox / Number of gears** Automatic / 8

**Type of drive** Front drive

**Type of vehicle** Van

**Colour / colour code** TYPE HABILLAGE  
EXTERIEUR PLATE  
STANDARD

**Doors / Seats** 4 / 3

**Upholstery type** Cloth

**Colour of upholstery** Black-Anthracite



## Vehicle details

<b>Maintenance booklet / proof</b>	digital proof / complete	<b>Next maintenance in</b>	34,100 km
<b>Last service on / at</b>	11/2025 at 42,561 km		
<b>Key is / should be</b>	2 / 2	<b>FZG documents</b>	ZB#2 (B) was available (copy), ZB#1 (S) was not available.
		<b>Letter No.</b>	GN168778
<b>Previous damage / Accident</b>	None detectable	<b>Repainting</b>	None detectable
<b>Inspection conditions</b>	sufficient	<b>Lifting equipment / pit</b>	yes
<b>Test drive</b>	Not performed	<b>Engine function test</b>	Performed
<b>Manufacturer key number/ type code number</b>	3003 / AXZ 01227		
<b>Emission standard</b>	EURO6;WLTP;AR;PI/CI;N1 III, N2	<b>fine dust sticker</b>	
<b>Permitted total weight</b>	3,100 kg	<b>Empty weight</b>	

## Tyres

### Mounted tyres

#	Tyre size	Type of tyre	Manufacturer	Tread depth
1)	215/65 R16 106T	Winter tyres on Light alloy	Hankook	6mm / 6mm
2)	215/65 R16 106T	Winter tyres on Light alloy	Hankook	8mm / 8mm

### Additional tyres

#	Tyre size	Type of tyre	Manufacturer	Tread depth
1)	215/65 R16 109T	Summer tyres on Steel	Continental	7mm / 7mm
2)	215/65 R16 109T	Summer tyres on Steel	Continental	9mm / 9mm

**Legend: Tread depth information for the left tire is listed first, for the right tire it is listed second on the axle in the direction of travel.**



## Equipment

### Standard equipment

- Storage compartments (storage compartment in the center console, front - storage shelf above the windshield, open - storage compartment in the front doors, suitable for 1.5-liter beverage bottles - glove compartment, open - storage compartment on dashboard, passenger side, closed)
- Exterior mirror housings in black
- Hill Start Assist
- On-board computer
- Diesel particulate filter, maintenance-free
- Three-point seat belts on all seats (belt force limiter, front - double belt tensioners, front - warning tone and light for unfastened seat belts, front)
- Speed controller and limiter
- Grab handle in the first row of seats, passenger side
- Air conditioning, front with particle and odor filter (recirculation mode, manual)
- Steering column, adjustable for reach and height
- Fatigue detection level 1 coffee break
- Package: Driver Assistance Package 1 (High Beam Assist - Driver Alert System with Camera Monitoring - Lane Keeping Assist - Traffic Sign Recognition with Intelligent Speed Control - Solar Reflect Windscreen)
- Radio accessories: Digital radio reception DAB+ (Digital Audio Broadcasting) (Offers a wider selection of radio programs. Digitally broadcast radio stations and traffic information can be received.)
- Wheels: Tire repair kit (with tire sealant and 12-volt compressor (without jack))
- Wheels: Steel wheels 7 J x 16 with wheel hub cover (tires 215/65 R 16 C 106T)
- Side impact protection
- Speed-sensitive power steering
- Seats: Comfort driver's seat and double passenger seat (comfort driver's seat adjustable in 6 ways, with armrest and lumbar support - double passenger seat with storage under the seat - height-adjustable headrests, front)
- Daytime running light
- Traction control with engine and brake intervention (TC Plus)
- Doors: Sliding door, passenger side
- Lashing eyes (8) in the cargo area
- Heat-insulating glazing, tinted
- Payload increased by +300 kg
- ABS including brake assist and adaptive brake light
- Driver and passenger side airbags (front airbag, passenger airbag, deactivatable)
- Anti-lock braking system (ABS) with cornering brake control and brake assist
- Exterior mirrors, electrically folding, heated and adjustable
- Battery discharge protection
- Floor covering: Cargo area floor, painted
- third brake light
- Tachometer
- Electric parking brake
- Electronic Stability Program (ESP Plus)
- Electric front windows (with one-touch function)
- Transmission: 8-speed automatic
- Glove compartment closed at the top (cooled and illuminated)
- Steering wheel: Comfort steering wheel (PU), flattened at the bottom
- Fog light
- Park pilot, front and rear parking aid (with acoustic warning signal when parking forwards and backwards - blind spot warning - electrically folding exterior mirrors - fog lights)
- Radio: Multimedia radio with 7" color touchscreen display (Automatic music recognition for audio devices with USB connection, Bluetooth audio streaming, Digital radio reception DAB+, Hands-free system via Bluetooth interface, Display of phonebook and call lists, Up to 10 mobile phones can be paired, Display of pictures/films/videos via USB interface, Smartphone integration, Voice control, 1 USB interface, Dual tuner, Graphic equalizer, 4 speakers (8 in double cab Edition or Elegance))
- Side protection strips (in black)
- Visibility equipment (rain sensor - automatic dipped headlights)
- Sun visors, driver and passenger
- 12-volt power outlet in the center console
- 12V power outlet in the cargo area and in the lower glove compartment (2nd row of seats, left side of cargo area)
- Partition wall: closed, without windows
- Doors: Rear wing doors, sheet metal with a 180° opening angle
- Electronic immobilizer
- Central locking with remote control
- Ignition key (2), foldable



### Extra equipment

- Steering wheel: Multifunction leather steering wheel
- Radio: Multimedia Navi Pro with 7" color touchscreen display and voice control for audio, telephone and navigation (automatic music recognition (title, album, artist, cover) for audio devices with USB connection, Bluetooth audio streaming, hands-free calling via Bluetooth interface, up to 10 mobile phones can be paired, image display via USB interface, navigation system with integrated memory, OpelConnect with telematics services, map of Europe, 3D map display, TMC GPS module, smartphone integration via Apple CarPlay and Android Auto, 1 USB interface, dual tuner, graphic equalizer)
- Heated seats for driver and front passenger (in conjunction with double passenger seat, the middle seat is not heated - side and head airbags, 1st row of seats)
- Doors: Rear wing doors, glazed with a 180° opening angle (and heated rear window wipers)
- Package: Design package (front and rear bumpers in body color - door handles in body color - exterior mirror housings in black - exterior mirrors, electrically adjustable, heated and folding - side protection strip in body color - fog lights - LED daytime running lights)
- 180° panoramic reversing camera (displays the area behind the vehicle up to 180 degrees, including steering guidelines, when reverse gear is engaged, in the color display of the infotainment system.)
- Seats: Comfort driver's seat and multifunctional double passenger seat (comfort driver's seat adjustable in 6 ways, with armrest and lumbar support - multifunctional double passenger seat with pass-through function and DIN A4 desk - headrests, height adjustable)
- Partition wall: closed with window (FlexCargo function)

### Brief expert findings

Documents submitted	At the time of the inspection, the vehicle registration certificate Part 2 (title) was available, but the vehicle registration certificate Part 1 (document) was not. (Copy)
VIN comparison	The vehicle identification number (VIN) was read from the vehicle and its conformity with the submitted documents was confirmed by the undersigned during the inspection.
Inspection	The inspection conditions were sufficient for the assessment of the vehicle. Lifting equipment and/or a pit were available for examining the vehicle.
Test drive	No test drive/shunting maneuver was carried out during the inspection of the vehicle.
Engine function test	An engine test run was performed.

### Value reducing factors

No.	Component group	Description
1	Misc.	Main inspection - No evidence - No deduction
2	Seat - front	Seat cover - left side - Soiled - Clean
3	Seat - front	Seat cover - left side - Soiled - Clean
4	Front bumper	Cover bumper - front - Scratch(es) - Paint
5	Rear bumper	Bumper - rear left side - Scratch(es) - Paint
6	Sliding door, right	Protection strip - Scratch(es) - Replace
7	Door - front left side	Brightware - lower (+Tür hinten) - Damaged - Replace
8	Front bumper	Front bumper - Scratched - Paint



## Wear and tear

No.	Component group	Description
1	Wing mirror - right side	Cap - Scratch(es) - No deduction
2	Vehicle glazing	Windscreen - Stone chips - No deduction
3	Door - front right side	Door - Scratch(es) - No deduction
4	Side panel - rear right side	Side panel - Scratch(es) - No deduction
5	Rear bumper	Rear bumper - Scratch(es) - No deduction
6	Boot lid / rear door	Hinge - lower (Hecktür links) - Scratch(es) - No deduction
7	Sill - left side	Sill - dent(s) - No deduction
8	Side panel - rear right side	Side panel - Scratch(es) - No deduction
9	Wheel / tyres	Alloy rim - rear left side - Scratch(es) - No deduction
10	Wheel / tyres	Alloy rim - front right side - Scratch(es) - No deduction

The vehicle shows signs of wear and tear commensurate with its age and use.

## Order/Scope of Order

An order was placed to prepare a sales report for the described vehicle. This report includes the following:

- Description of key vehicle information
- Documentation of equipment features  
(*Delivery by third-party service providers*)
- Documentation of damage, defects, missing parts
- Documentation of prior damage, unrepaired prior damage, repainting
- A brief visual or functional inspection of the equipment details, if possible.  
(*Functional testing of driver assistance systems is not included in the scope of services!*)
- a photographic documentation of the vehicle

## Basis for the order

This product is based on the guidelines for vehicle returns and valuations of light commercial vehicles published by Alphabet Fleet Management GmbH. The expert makes the specific findings in each individual case objectively, within the framework of the prescribed standards, based on their own expertise.

The vehicle inspection takes place in a fully assembled, unassembled state.

Damage or defects that can only be detected during disassembly/diagnostic work or through further investigation remain within the realm of prognostic risk. An increased risk exists due to concealed defects caused by fraudulent misrepresentation and which were not identifiable by the expert.

Damage or defects resulting from normal use or wear and tear of the vehicle will be accepted in accordance with the applicable standard.

There was no explicit identification or monetary consideration of the expected features within the product.

Features which, in their nature and extent, slightly exceed normal use but do not constitute unacceptable damage, will be documented and indicated as signs of wear, if applicable.

Damage or defects that, according to the applicable standard, can no longer be attributed to normal use or wear and tear are listed under "Value Reducing Factors" in the product description.

Depending on the product specification, a monetary ID can be provided. If this takes place, the costs can be 100% d or pro rata depending on the vehicle's age and mileage.

## Previous damages

No apparent prior damage that had been repaired could be found on the vehicle.



Figure 1: Diagonal front (left)



Figure 2: Diagonal front (right)



Figure 3: Diagonal rear (left)



Figure 4: Diagonal rear (right)



Figure 5: Interior - front

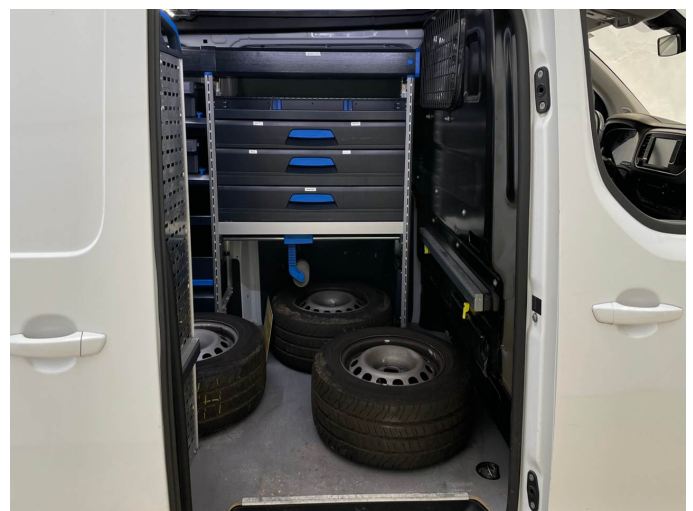


Figure 6: Interior - rear



Figure 7: Instrument cluster



Figure 8: Instrument panel



Figure 9: Interior 360° view



Figure 10: Cargo area



Figure 11: VIN



Figure 12: Mounted tyres



Figure 13: Documents



Figure 14: Documents

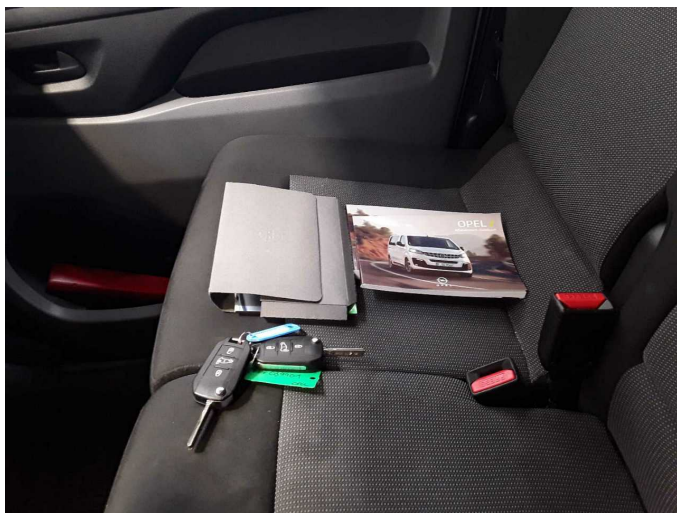


Figure 15: Documents



Figure 16: Additional tyres



Figure 17: Navigation



Figure 18: Misc.



Figure 19: Misc.

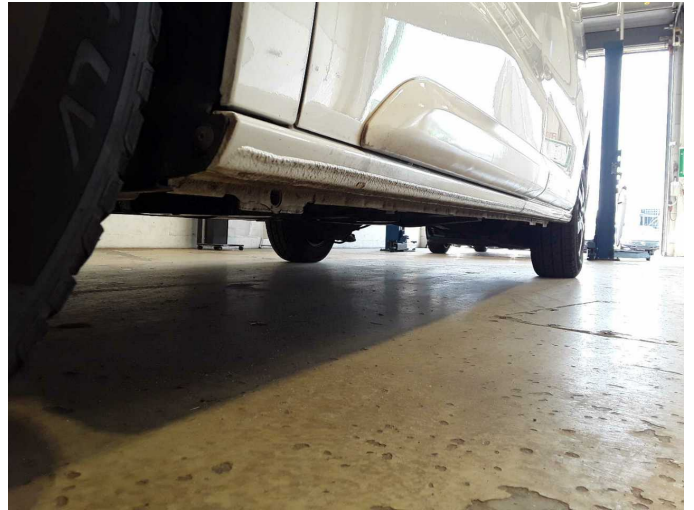


Figure 20: Misc.



Figure 21: Misc.



Figure 22: Misc.



Figure 23: Misc.



Figure 24: Misc.



Figure 25: Misc.



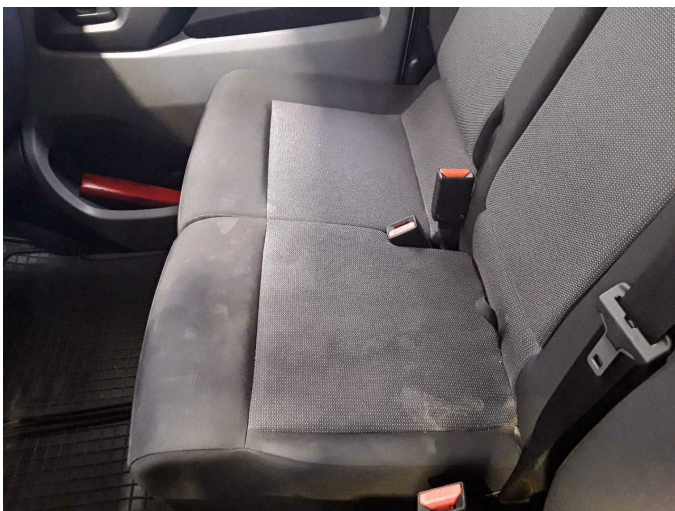
Figure 26: Misc.



Figure 27: Misc.



Damage 2: Seat - front: Seat cover - left side - Soiled - Clean



Damage 3: Seat - front: Seat cover - left side - Soiled - Clean



Damage 4: Front bumper: Cover bumper - front - Scratch(es) - Paint



**Damage 4:** Front bumper: Cover bumper - front - Scratch(es) - Paint



**Damage 5:** Rear bumper: Bumper - rear left side - Scratch(es) - Paint



**Damage 5:** Rear bumper: Bumper - rear left side - Scratch(es) - Paint



**Damage 6:** Sliding door, right: Protection strip - Scratch(es) - Replace



**Damage 6:** Sliding door, right: Protection strip - Scratch(es) - Replace



**Damage 7:** Door - front left side: Brightware - lower (+Tür hinten) - Damaged - Replace



**Damage 7:** Door - front left side: Brightware - lower (+Tür hinten) - Damaged - Replace



**Damage 7:** Door - front left side: Brightware - lower (+Tür hinten) - Damaged - Replace



**Damage 7:** Door - front left side: Brightware - lower (+Tür hinten) - Damaged - Replace



**Damage 7:** Door - front left side: Brightware - lower (+Tür hinten) - Damaged - Replace



**Damage 8:** Front bumper: Front bumper - Scratched - Paint



**Damage 8:** Front bumper: Front bumper - Scratched - Paint



**Damage 8:** Front bumper: Front bumper - Scratched - Paint



**Damage 8:** Front bumper: Front bumper - Scratched - Paint



# Wartungshistorie

(gemäß Auftraggeber Informationen)

Fahrgestellnummer: VXEVFEHZ7N7039901

Hersteller / Modell: OPEL OPEL Vivaro 2.0 D Cargo L EHZ Autm. Elegance

Datum	KM-Stand	Beschreibung
10.11.2025	42.561	Motoröl b. Wartung; Ölfilter ern; Regelwartungsdienst; Wartung Sonstiges
04.12.2024	33.584	Bremsflüssigkeit; Bremsflüssigkeit ern; Motoröl b. Wartung; Ölfilter ern; Regelwartungsdienst; Reparatur Sonstiges; Wartung Sonstiges