

Expertise

Protocol number: 46358777
Order No. / Reference: 26611834
Inspection date: 7 Jul 2026

Manufacturer: Mercedes-Benz

Model: C 220 d T 9G-TRONIC AMG Line

VIN: W1KAH0EB8PF120682



Vehicle details

Manufacturer / Type / Model / Equipment

Mercedes-Benz C 220 d T 9G-TRONIC AMG Line

Vehicle Identification number W1KAH0EB8PF120682

Mileage (Read) 138,870 km

First registration 6 Jul 2023

Number of holders 1

Power / Engine displacement 147 kw / 1,993 ccm

Fuel type / Cylinder Hybrid Diesel / E / 4

Gearbox / Number of gears Automatic / 9

Type of drive Rear drive

Type of vehicle Station wagon

Colour / colour code Schwarz uni

Doors / Seats 5 / 5

Upholstery type Leather

Colour of upholstery Black-Anthracite



Vehicle details

Maintenance booklet / proof	digital proof / complete	Next maintenance in	296 Tag(e)
Last service on / at	04/2026 at 129,942 km		
Key is / should be	2 / 2	FZG documents	ZB#2 (B) was available (copy), ZB#1 (S) was not available.
		Letter No.	GV698982
Previous damage / Accident	None detectable	Repainting	None detectable
Inspection conditions	sufficient	Lifting equipment / pit	yes
Test drive	Not performed	Engine function test	Performed
Manufacturer key number/ type code number	2222 / AYH 00291		
Emission standard	EURO6;WLTP;AP;PI/CI; M, N1 I	fine dust sticker	
Permitted total weight	2,400 kg	Empty weight	

Tyres

Mounted tyres

#	Tyre size	Type of tyre	Manufacturer	Tread depth
1)	225/45 R18 95Y	Summer tyres on Light alloy	Pirelli	3mm / 3mm
2)	245/40 R18 97Y	Summer tyres on Light alloy	Pirelli	4mm / 4mm

Additional tyres

#	Tyre size	Type of tyre	Manufacturer	Tread depth
1)	225/45 R18 95V	Winter tyres on Light alloy	Pirelli	5mm / 5mm
2)	225/45 R18 95V	Winter tyres on Light alloy	Pirelli	6mm / 6mm

Legend: Tread depth information for the left tire is listed first, for the right tire it is listed second on the axle in the direction of travel.



Equipment

Standard equipment

- Ambient lighting with 64 light colors
- AMG sports pedal assembly made of brushed stainless steel with rubber studs
- Basic services
- Brake assist, active
- Diesel particulate filter
- DYNAMIC SELECT
- ECO start/stop function
- Chassis: Sport chassis with sport direct steering
- Speed Limit Assistant
- rear window wiper
- Instrument panel and door sills in ARTICO man-made leather in black nappa look
- Mechanical child safety lock for the rear doors
- Front headrests
- Cargo area cover including EASY-PACK safety net
- Steering wheel: Multifunction sports steering wheel in Nappa leather
- Package: Interior lighting package
- Radio: Extended MBUX functions
- Radio accessories: Digital radio (DAB)
- Radio accessories: Central display
- Tire pressure monitoring system (TPMS)
- Windscreen wipers with rain sensor
- Lane Keeping Assist, active
- High-visibility vest for drivers
- Central locking with remote control
- Airbag: Automatic passenger airbag deactivation
- Airbag: Side airbag for driver and front passenger
- AMG floor mats
- Left and right exterior mirrors are heated and electrically adjustable
- Brake system with larger brake discs on the front axle
- black roof rails
- Double cup holder at the front
- EASY-PACK tailgate
- Electronic Stability Program (ESP)
- Electric windows (4-way)
- Transmission: 9-speed automatic, 9G-TRONIC
- Heated rear window
- ISOFIX child seat attachment with top tether in the rear
- KEYLESS-GO start function
- Rear headrests (3)
- Paint finish: Solid
- LED High Performance Headlights
- Mercedes-Benz emergency call system
- Package: Storage
- Upholstery: ARTICO leatherette/MICROCUT microfiber
- Radio: MBUX
- Radio accessories: Communication module (LTE) for using Mercedes me connect services
- Remote Services Plus
- Seats: Rear seat backrests foldable
- Cruise control
- Electronic immobilizer
- Airbag for driver and front passenger
- Airbag: Center airbag
- Airbag: Windowbag for driver and front passenger



Extra equipment

- Black fabric headliner
- Fuel tank with larger capacity
- Center console diamond pattern silver grey
- Package: Advanced Comfort Package (Heated seats for driver and front passenger - Seat Comfort Package: - Numerous electric and manual adjustment options for the front seats to adapt to the specific body and comfort requirements of the driver and front passenger - Electro-pneumatic 4-way lumbar support and lateral support adjustment with control element on the seat - Electric seat cushion tilt adjustment - Electric height adjustment - Electric backrest adjustment - Electric seat cushion depth adjustment - Mechanical longitudinal adjustment - Mechanical headrest adjustment)
- Package: Assistance (Blind Spot Assist: The system can warn you of side collisions with other road users in your blind spot, especially as soon as you activate the turn signal. Even after driving, the system remains vigilant and warns you if you open the door at the wrong moment. An important safety feature – especially for cyclists.)
- Package: Business (Avant. or AMG Line Ext)
- Package: Night (for T-Model with AMG Line exterior) (Radiator grille: diamond grille with silver pins and high-gloss black louvre (18") AMG light-alloy wheels in 5-spoke design, aerodynamically optimized, black-painted, high-sheen finish, with front axle 225/45 R18 on 7.5Jx18 ET40, rear axle 245/40 R18 on 8Jx18 ET52 AMG front apron with high-gloss black wing trim. Rear bumper with high-gloss black wing trim. Belt trim strip and window surrounds in high-gloss black. Exterior mirror housings in high-gloss black. Heat-insulating dark-tinted rear glass (from the B-pillar). Roof rails in black.)
- Radio accessories: Advanced sound system (with 9 speakers and 225 watts system power)
- Wheels: 45.7 cm (18") AMG light-alloy wheels in 5-spoke design (aerodynamically optimized, painted black and high-sheen finish with front axle 225/45 R 18 on 7.5 J x 18 ET 40, rear axle 245/40 R 18 on 8.5 J x 18 ET 52)
- Decorative elements in diamond pattern, silver-grey
- THERMATIC automatic climate control with 2 climate zones (control via the central display or the climate control unit in the center console; sensor system for detecting, for example, indoor/outdoor temperature, sunlight, humidity, and dew point; automatic recirculation (only in conjunction with navigation system); ventilation system consisting of: 3 center vents and 2 side vents; fine dust activated carbon filter for filtering dust, soot, and pollen; dew point sensor; residual heat function for efficient use of engine waste heat)
- Package: Advanced Parking Package (12 ultrasonic sensors - 360° camera - Active Parking Assist with PARKTRONIC: detects free parking spaces, assisted parking, visual and acoustic warning, display of camera and ultrasonic data in the media display - Cross traffic warning: can provide visual and acoustic warnings when reversing out of a parking space and, if necessary, automatically initiate emergency braking - Reverse maneuvering brake: can trigger a braking process - Drive-away assist)
- Package: High-End Infotainment Package (MBUX Navigation Premium (hard drive navigation, pre-installation for Live Traffic Information), Traffic Sign Assist, Smartphone Integration (connects the mobile phone wirelessly to the multimedia system via Apple CarPlay and Android Auto), Wireless charging system for mobile devices in the front, Driver display - 31.2 cm (12.3") color LCD display, Central display - 30.2 cm (11.9") touch display, MBUX Augmented Reality for navigation.)
- Package: Mirror package (both exterior mirrors electrically folding (button in the driver's door control panel) - interior mirror and exterior mirror on the driver's side automatically dimming continuously - ambient lighting of the exterior mirror to illuminate the entry area with projection of the Mercedes-Benz logo)
- Seats: Sports seats
- Type designation removed from trunk lid
- Heat-insulating dark tinted glass

Brief expert findings

Documents submitted	At the time of the inspection, the vehicle registration certificate Part 2 (title) was available, but the vehicle registration certificate Part 1 (document) was not. (Copy)
VIN comparison	The vehicle identification number (VIN) was read from the vehicle and its conformity with the submitted documents was confirmed by the undersigned during the inspection.
Inspection	The inspection conditions were sufficient for the assessment of the vehicle. Lifting equipment and/or a pit were available for examining the vehicle.
Test drive	No test drive/shunting maneuver was carried out during the inspection of the vehicle.
Engine function test	An engine test run was performed.



Value reducing factors

No.	Component group	Description
1	Misc.	Main inspection - No evidence - No deduction
2	Rear bumper	Rear bumper - Scratched - Paint
3	Front bumper	Front bumper - Scratch(es) - Paint

Wear and tear

No.	Component group	Description
1	2nd wheel set	Alloy rim set - complete - Scratched - No deduction
2	Body	Underbody panelling - Scratched - No deduction
3	Door - rear left side	Door - Stone chips - No deduction
4	Door - front left side	Door - Scratch(es) - No deduction
5	Bonnet	Bonnet - Stone chips - No deduction
6	Vehicle glazing	Windscreen - Stone chips - No deduction
7	Body	A-pillar - right side - Stone chips - No deduction

The vehicle shows signs of wear and tear commensurate with its age and use.

Order/Scope of Order

An order was placed to prepare a sales report for the described vehicle. This report includes the following:

- Description of key vehicle information
- Documentation of equipment features
(Delivery by third-party service providers)
- Documentation of damage, defects, missing parts
- Documentation of prior damage, unrepaired prior damage, repainting
- A brief visual or functional inspection of the equipment details, if possible.
(Functional testing of driver assistance systems is not included in the scope of services!)
- a photographic documentation of the vehicle

Basis for the order

This product is based on the guidelines for vehicle returns and valuations published by Alphabet Fleet GmbH. The expert makes the specific findings in each individual case objectively, within the framework of the prescribed standards, based on their own expertise.

The vehicle inspection takes place in a fully assembled, unassembled state.

Damage or defects that can only be detected during disassembly/diagnostic work or through further investigation remain within the realm of prognostic risk. An increased risk exists due to concealed defects caused by fraudulent misrepresentation and which were not identifiable by the expert.

Damage or defects resulting from normal use or wear and tear of the vehicle will be accepted in accordance with the applicable standard.

There was no explicit identification or monetary consideration of the expected features within the product.

Features which, in their nature and extent, slightly exceed normal use but do not constitute unacceptable damage, will be documented and indicated as signs of wear, if applicable.

Damage or defects that, according to the applicable standard, can no longer be attributed to normal use or wear and tear are listed under "Value Reducing Factors" in the product description.

Depending on the product specification, a monetary ID can be provided. If this takes place, the costs can be 100% d or pro rata depending on the vehicle's age and mileage.

Previous damages

No apparent prior damage that had been repaired could be found on the vehicle.



Comments

Wartungshistorie gemäß Auftraggeber Informationen.



Figure 1: Diagonal front (left)



Figure 2: Diagonal front (right)



Figure 3: Diagonal rear (left)



Figure 4: Diagonal rear (right)



Figure 5: Interior - front

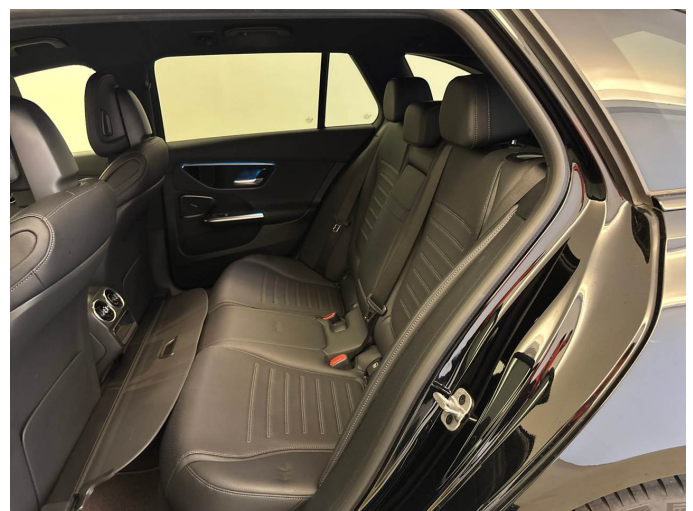


Figure 6: Interior - rear



Figure 7: Instrument cluster



Figure 8: Instrument panel



Figure 9: Interior 360° view



Figure 10: Cargo area



Figure 11: VIN



Figure 12: Mounted tyres

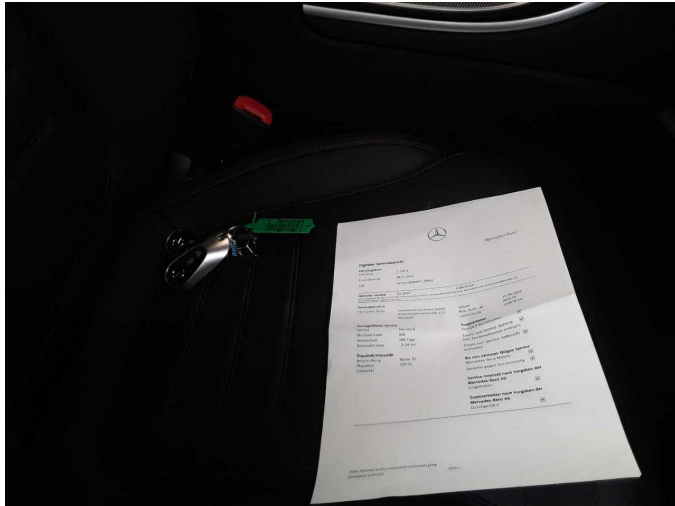


Figure 13: Documents

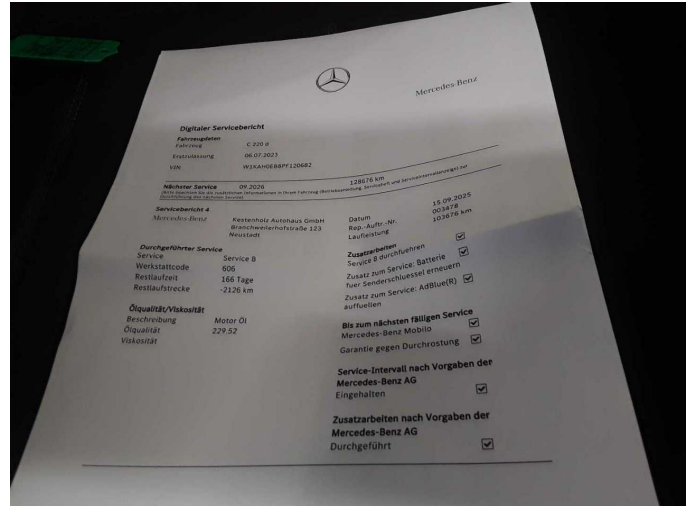


Figure 14: Documents

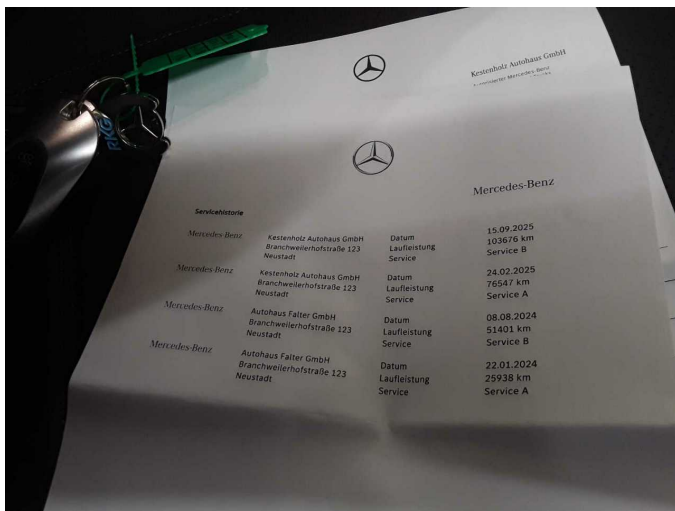


Figure 15: Documents



Figure 16: Documents



Figure 17: Documents



Figure 18: Additional tyres



Figure 19: Navigation



Figure 20: Misc.



Figure 21: Misc.

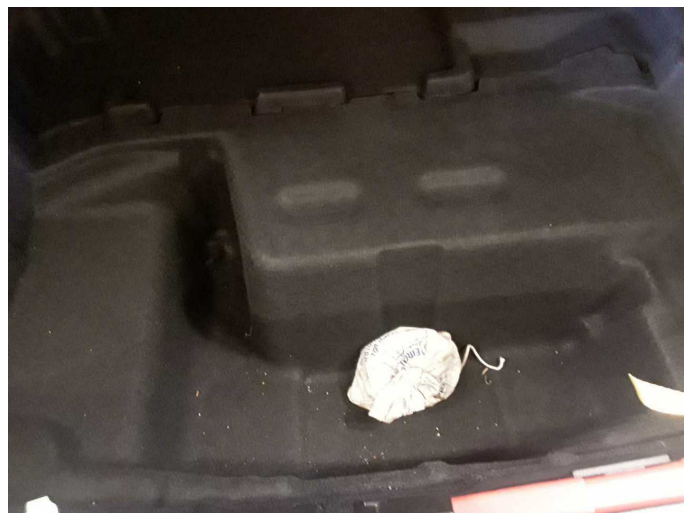


Figure 22: Misc.



Figure 23: Misc.



Figure 24: Misc.



Figure 25: Misc.



Figure 26: Misc.



Figure 27: Misc.



Figure 28: Misc.



Figure 29: Misc.

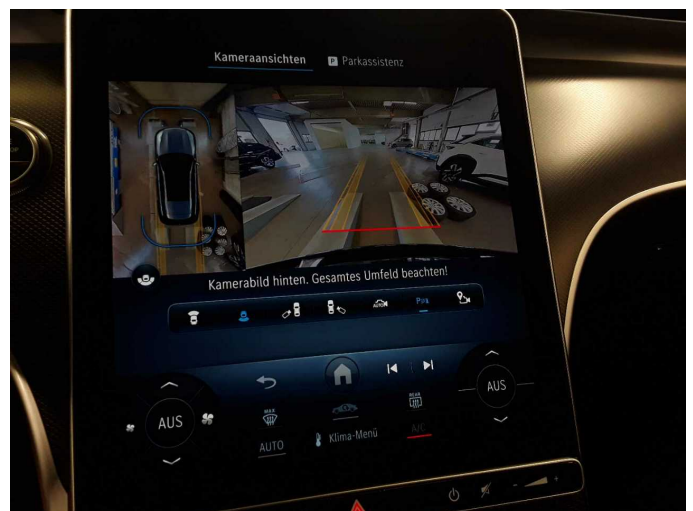


Figure 30: Misc.

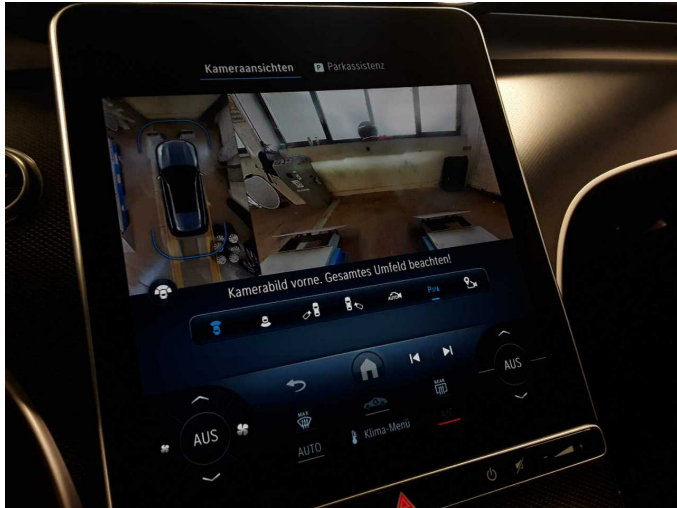


Figure 31: Misc.

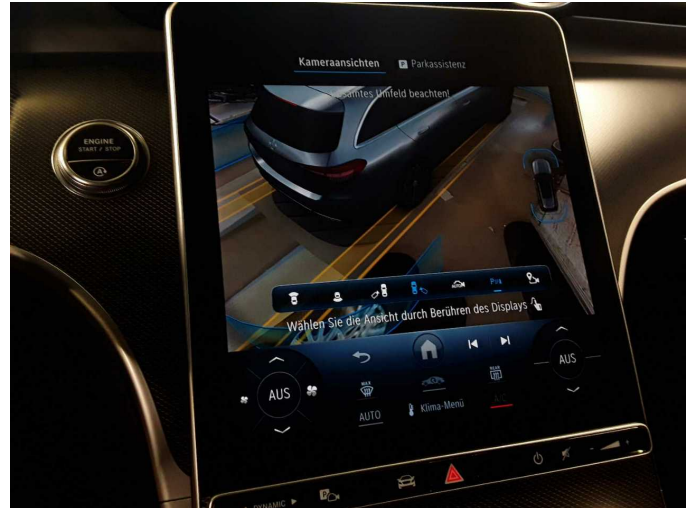
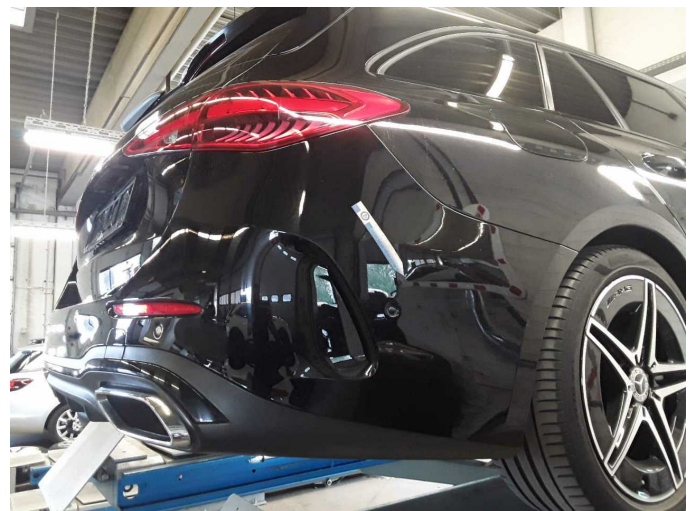


Figure 32: Misc.



Figure 33: Misc.



Damage 2: Rear bumper: Rear bumper - Scratched - Paint



Damage 2: Rear bumper: Rear bumper - Scratched - Paint



Damage 2: Rear bumper: Rear bumper - Scratched - Paint



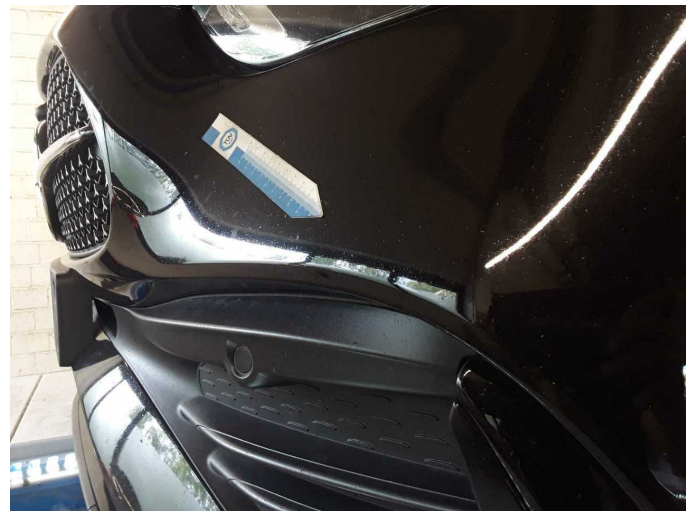
Damage 2: Rear bumper: Rear bumper - Scratched - Paint



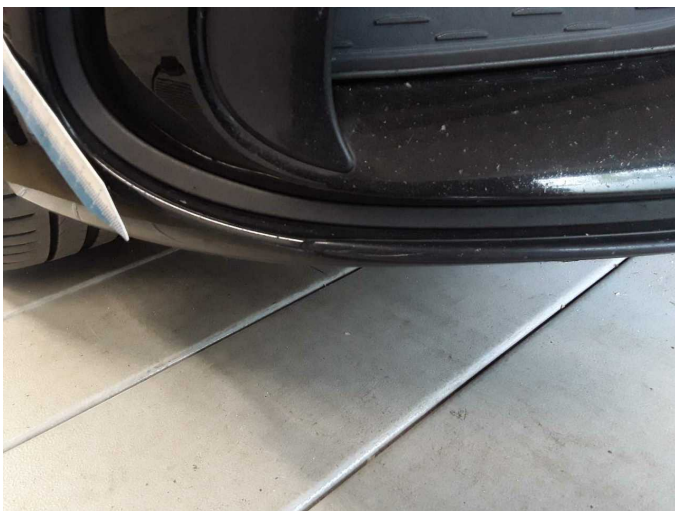
Damage 3: Front bumper: Front bumper - Scratch(es) - Paint



Damage 3: Front bumper: Front bumper - Scratch(es) - Paint



Damage 3: Front bumper: Front bumper - Scratch(es) - Paint



Damage 3: Front bumper: Front bumper - Scratch(es) - Paint



Damage 3: Front bumper: Front bumper - Scratch(es) - Paint



Wartungshistorie

(gemäß Auftraggeber Informationen)

Fahrgestellnummer: W1KAH0EB8PF120682
Hersteller / Modell: MERCEDES-BENZ MERCEDES-BENZ C 220 d T 9G-TRONIC
AMG Line

Datum	KM-Stand	Beschreibung
09.04.2026	129.942	Bremsinspektion vo + hi; Regelwartungsdienst
09.01.2026	116.346	Batterie ern; Systemtest/Eigendiagnose
15.09.2025	103.676	Regelwartungsdienst
24.02.2025	76.547	Regelwartungsdienst
08.08.2024	51.401	Regelwartungsdienst
22.01.2024	25.938	Regelwartungsdienst