

Expertise

Protocol number: 45984064
Order No. / Reference: 26494859
Inspection date: 17 Jun 2026

Manufacturer: Volvo

Model: XC60 T6 AWD Recharge Geartronic Inscription

VIN: LYVUZBFVDMB790085



Vehicle details

Manufacturer / Type / Model / Equipment

Volvo XC60 T6 AWD Recharge Geartronic Inscription

Vehicle Identification number	LYVUZBFVDMB790085
Mileage (Read)	119,046 km
First registration	17 Mar 2021
Number of holders	1
Next periodical technical inspection	04/2028 (Report not on hand)

Power / Engine displacement	186 kw / 1,969 ccm
------------------------------------	--------------------

Fuel type / Cylinder	Hybr.B/E ext.aufll / 4
-----------------------------	------------------------

Gearbox / Number of gears	Automatic / 8
----------------------------------	---------------

Type of drive	All-wheel drive
----------------------	-----------------

Type of vehicle	SUV
------------------------	-----

Colour / colour code	Osmium Grau-Metallic
-----------------------------	----------------------

Doors / Seats	5 / 5
----------------------	-------

Upholstery type	Leather
------------------------	---------

Colour of upholstery	Black
-----------------------------	-------



Vehicle details			
Maintenance booklet / proof	digital proof / complete	Next maintenance in	28,071 km
Last service on / at	04/2026 at 117,117 km		
Key is / should be	2 / 2	FZG documents	ZB#2 (B) was available (copy), ZB#1 (S) was not available.
		Letter No.	GA549212
Previous damage / Accident	Detectable	Repainting	Detectable
Inspection conditions	sufficient	Lifting equipment / pit	yes
Test drive	Not performed	Engine function test	Performed
Manufacturer key number/ type code number	9101 / BRS 00006		
Emission standard	EURO6;WLTP;AP;PI/CI; M, N1 I	fine dust sticker	
Permitted total weight	2,660 kg	Empty weight	

Tyres

Mounted tyres				
#	Tyre size	Type of tyre	Manufacturer	Tread depth
1)	235/55 R19 105H	Summer tyres on Light alloy	Pirelli	6mm / 6mm
2)	235/55 R19 105H	Summer tyres on Light alloy	Pirelli	6mm / 6mm
Additional tyres				
#	Tyre size	Type of tyre	Manufacturer	Tread depth
1)	235/60 R18 103H	Winter tyres on Light alloy	Pirelli	5mm / 5mm
2)	235/60 R18 103H	Winter tyres on Light alloy	Pirelli	5mm / 5mm
Replacement				
Typ	Tyre size	Type of tyre	Manufacturer	Tread depth
	Tirefit	Expiration date 11/2024		

Legend: Tread depth information for the left tire is listed first, for the right tire it is listed second on the axle in the direction of travel.

TÜV SÜD Auto Partner GmbH
Wiesenring 2
04159 Leipzig

Inspection location
Hartmann Compound Professionals
Arnoldschacht 9-11
44894 Bochum



Equipment



Standard equipment

- ABS - Anti-lock Braking System (with EBV)
- Passenger side airbag can be deactivated
- Airbag, driver's knee airbag
- All-wheel drive (AWD) (depending on the driving mode)
- Ambient lighting (Extended interior lighting with: - Ambient lighting (multicoloured) front and rear - Work light on the tailgate - Exit lights front and rear - Illuminated door pockets and door openers front and rear - Illuminated cup holders front - Footwell lighting rear - Reading lights rear)
- Outdoor temperature display
- Hill Descent Control (HDC)
- Hill Start Assist (HSA)
- LED turn signals integrated into the exterior mirrors
- third brake light
- Chrome trim on the side windows
- Chrome trim strip in the door sill area with Recharge lettering
- CleanZone air quality system with activated carbon filter (automatic recirculation and pre-ventilation of the interior when the vehicle is unlocked)
- Connected Safety (Cloud-based warning of slippery road conditions and vehicles with hazard warning lights activated)
- Drive Mode (driving mode settings for engine, transmission, steering, brakes and suspension: Comfort, Eco, Dynamic, Off Road, Individual)
- Rear parking assist
- Electronic differential lock Corner Traction Control (CTC)
- Electric windows front and rear (with auto-down and auto-up function)
- Front grille in waterfall design in chrome
- Luggage compartment partition net
- Transmission: 8-speed Geartronic automatic transmission
- Automatic tailgate (electric)
- Heated rear window
- IDIS - Intelligent Driver Information System (delays incoming calls or vehicle information in potentially dangerous situations)
- Interior and exterior mirrors automatically dimming
- Interior lighting (headliner, front reading lights, front ambient lighting, front footwell, storage compartment behind center console, glove compartment and luggage compartment)
- Child safety lock (rear doors)
- Automatic climate control with separate temperature control for driver and front passenger (and additional air vents for the 2nd row of seats (integrated in the B-pillar) including pre-ventilation and reheating of the interior when the engine is switched off via Volvo On Call smartphone app or menu)
- Lane Keeping Aid (preventive protection system to keep the vehicle in the lane including active steering intervention)
- Steering wheel: Steering wheel heating
- Rear center armrest (foldable) (with cup holders)
- Driver and passenger side airbags with two-stage deployment system
- Airbag, side airbags for driver and front passenger and head/shoulder airbags (iC) for all occupants
- Dashboard in leather look with contrasting stitching
- Exhaust system with two chrome-plated tailpipes (integrated in the rear apron in trapezoidal shape)
- Electrically folding exterior mirrors
- Electrically adjustable and heated exterior mirrors on the left and right (driver and passenger side with wide-angle optics)
- Fog sensor for automatic activation of the defroster function
- On-board computer (with vehicle control functions)
- Chrome applications on the rear
- Chrome applications in the front bumper
- City Safety (automatic emergency braking system with detection of vehicles, cyclists, pedestrians and large animals, including intersection braking assistant, emergency braking assistant for oncoming traffic and steering support during evasive maneuvers)
- Roof edge spoiler
- Aluminum roof rails (integrated)
- Digital instrumentation (12.3" full graphic display (31.2 cm diagonal) with two variable round instruments and information display (e.g. for navigation map view))
- Driver Alert (Attention Warning)
- Aluminum door sill plates with Recharge lettering, front
- ESC - Vehicle Dynamics Control
- Automatic emergency braking (emergency braking mechanism after the deployment of the airbags or seatbelt pretensioners to prevent secondary accidents)
- Cruise control system (and variable speed limiter)
- Standard equipment XC60: Safety equipment (active seat belts with pretensioners, pre-activation of the pretensioners only in conjunction with IntelliSafe Surround - front seat belt height adjustment - warning tone/indicator for unfastened seat belts (for all seats) - emergency brake lights (brake lights flash rapidly during heavy deceleration; hazard warning lights are automatically activated at speeds below 10 km/h) - electric parking brake)
- ISOFIX mounting for the outer rear seats
- Keyless Drive (electronic access system with sensor-controlled tailgate, waterproof micro key and illuminated door handles and puddle lights)
- Headrests (5) front and rear
- Rear headrests foldable (electrically)
- Charging box under the cargo floor
- Stainless steel loading sill protector in the luggage compartment
- Cargo area roller blind
- Steering wheel adjustable for height and reach
- Steering wheel: Leather steering wheel in 3-spoke design (anthracite) (multifunction buttons in high-gloss black)
- Illuminated makeup mirror for driver and front passenger



- Sensus navigation system (3D navigation - destination input via natural voice control - dynamic route guidance with real-time traffic information - local search (surroundings search by keywords with information, ratings and photos) - Volvo Lifetime MapCare)
- Panoramic glass sliding sunroof with lifting function (electric) (with integrated, continuously adjustable sunshade)
- Radio accessories: Digital radio reception (DAB+)
- Radio accessories: Smartphone integration Apple CarPlay and Android Auto (integration of Apple iPhones and Android smartphones into the Sensus operating system)
- Radio accessories: Subwoofer
- Radio accessories: Two USB-C ports on the back of the center console
- Tire pressure monitoring system (with tire-specific pressure loss warning)
- Road Sign Information (RSI) - Traffic Sign Recognition
- Run-off Road Protection (preventive protection system in case of unintentional road leaving or impending rollovers including pre-activation of the seat belt tensioners, deactivation of the battery (plug-in hybrid only), emergency call via Volvo On Call and door unlocking)
- Gearshift lever made of Swedish crystal glass by Orrefors
- Speed-sensitive power steering
- Seats: Adjustable (electric) leg rest for driver and front passenger seats
- Seats: Driver and front passenger seats height adjustable (electrically) (including manual tilt adjustment for the driver's seat)
- Seats: Lumbar support (4-way electrically adjustable) for driver and front passenger seats
- Power outlet (12-volt connection in the luggage compartment)
- Glazing: Colored glazing
- Volvo On Call with Wi-Fi hotspot (including integrated modem, external antenna, and Wi-Fi hotspot for mobile devices). Volvo On Call features: automatic emergency call function with transmission of vehicle position and data, and alerting the Volvo On Call service center at the touch of a button (10-year subscription). Additionally, various convenience services are available via the smartphone app (3-year subscription, extendable upon request; includes extension of the emergency call function).
- Front center armrest with integrated storage compartment and cup holders
- Oncoming Lane Mitigation (preventive protection system when crossing the center line and approaching oncoming traffic, including steering intervention towards one's own lane)
- Electric parking brake
- Radio: Sensus Connect infotainment system with High Performance Sound (22.9 cm touchscreen (9" diagonal) - 330 watts of power - 10 speakers - 2x USB ports (compatible with Apple iPod/iPhone/iPad) - Bluetooth hands-free system incl. audio streaming - Internet access incl. internet radio and apps (via paired smartphone) - Voice control - Digital vehicle owner's manual - Connected Service Booking)
- Rain sensor
- Road Edge Detection (system to protect against unintentional leaving of the roadway through steering and braking interventions)
- Wheels: 19" 10-spoke alloy wheels, diamond cut / graphite look (tires 235/55 R19 with rims 7.5 Jx 19")
- Wheels: Tire sealant (Incl. 12-volt compressor, maximum speed 80 km/h)
- Rear seats in a 40/60 split or completely foldable with pass-through function
- Safety braking system with disc brakes all around (internally ventilated) (automatic brake system pre-tensioning, brake assist and automatic hold function)
- Seats: Driver's seat electrically adjustable (with memory function for driver's seat and exterior mirror settings (stored in the remote control))
- Seats: Heated front seats
- Start/Stop technology
- 12-volt socket at the front
- First aid kit and warning triangle
- Lashing eyes in the luggage compartment (foldable)
- Preparation for Trailer Stability Assist (TSA)
- Immobiliser
- WHIPS whiplash protection system (including immersion protection on all seats and energy-absorbing front seat cushions)
- Heated wiper blades and windshield washer nozzles
- Central locking with two remote controls and integrated emergency keys (automatic locking of doors while driving (can be deactivated) - comfort opening/closing of side windows and, if applicable, sunroof via remote control - panic function integrated into the remote control)



Extra equipment

- Alarm system (with motion/tilt sensor, security locking and private locking (separate trunk lock))
- Paint finish: Metallic paint
- Charging cable Type 2 / Type 2 (Mode 3) (7 m length, single-phase, 16A (for connection to a charging station with Type 2 connector))
- Package: Light Package (Headlight cleaning system - Full LED headlights "Thor's Hammer" Active High Beam with extended high beam, dynamic cornering lights, intelligent high beam assistant with adaptive headlight range control and integrated LED daytime running lights)
- Package: Seat Comfort Package (Electrically adjustable passenger seat - memory function for passenger seat)
- Package: Winter Package Pro (Auxiliary heater with timer (fuel-operated) Remote activation possible via Volvo On Call app - Rear seat heating (outer seats of the 2nd row))
- Upholstery: Nappa leather comfort seats, perforated front seats (with active ventilation and electrically adjustable side bolsters for driver and front passenger seats including storage compartment in the rear center armrest)
- Seats: Massage function for driver and front passenger seats
- Towbar (semi-electric)
- Head-up display: Graphic projection of driving information onto the windshield
- Charging cable: Storage bag for the charging cable
- Package: IntelliSafe Package Pro (Pilot Assist: Adaptive cruise control with distance warning and lane keeping assist up to speeds of 130 km/h - IntelliSafe Surround: Blind Spot Information System (BLIS) including lane change warning for rapidly approaching vehicles and steering intervention; Cross Traffic Alert with braking intervention - cross traffic warning for vehicles, cyclists and pedestrians when reversing out of parking spaces, including braking; rear impact mitigation)
- Package: Xenium Package Pro (Head-up display, graphic projection of driving information onto the windshield - Parking camera with 360° surround view - Front and rear parking aid - Sensus Connect infotainment system with HIGH PERFORMANCE SOUND PRO by Harman Kardon - Enhanced air quality system with fine dust filtration according to PM2.5 air quality standard)
- Seats: Heated rear seats (outer seats of the 2nd row)
- Glazing: Acoustic glazing for the side windows (UV and burglar-resistant laminated glass panes)

Brief expert findings

Documents submitted	At the time of the inspection, the vehicle registration certificate Part 2 (title) was available, but the vehicle registration certificate Part 1 (document) was not. (Copy)
VIN comparison	The vehicle identification number (VIN) was read from the vehicle and its conformity with the submitted documents was confirmed by the undersigned during the inspection.
Inspection	The inspection conditions were sufficient for the assessment of the vehicle. Lifting equipment and/or a pit were available for examining the vehicle.
Test drive	No test drive/shunting maneuver was carried out during the inspection of the vehicle.
Engine function test	An engine test run was performed.

Value reducing factors

No.	Component group	Description
1	Equipment	Tirefit filler - Expired - Replace
2	Side panel - rear right side	Side panel - dent(s) - Smooth repair work
3	Mudguard - left side	Mudguard - left side - dent(s) - Smooth repair work
4	Front bumper	Front bumper - Scratch(es) - Smart repair
5	Rear bumper	Rear bumper (Ladekante) - Scratch(es) - Smart repair
6	Side panel - rear left side	Side panel (Vogelkotverätzung-Mehrkosten möglich) - Paint defect - Conditioning
7	Front axle	Axles / undercarriage (wegen der beschädigten Felge) - Specify findings - Measure
8	Seat - front	Seat cover - left side - Holes - Replace
9	Door - rear left side	Door - Scratch(es) - Paint
10	Wheel / tyres	Alloy rim - front right side - Scratched - Replace



Previous damages

No.	Previous damage	Extent of damage (Net)
1	Rear, Provided by user / customer, from 22 Nov 2021	2.455,25 €
2	Side - left, Professionally repaired, Invoice of repair done Non-existent	

Repainting

No.	Repainting
1	Side panel - rear left side, Door - front left side, Professionally carried out, Invoice of repair done Non-existent

Paint coat thickness measurement

Side panel - rear left side	178 µm	Door - front left side	171 µm
-----------------------------	--------	------------------------	--------

Order/Scope of Order

An order was placed to prepare a sales report for the described vehicle. This report includes the following:

- Description of key vehicle information
- Documentation of equipment features
(*Delivery by third-party service providers*)
- Documentation of damage, defects, missing parts
- Documentation of prior damage, unrepaired prior damage, repainting
- A brief visual or functional inspection of the equipment details, if possible.
(*Functional testing of driver assistance systems is not included in the scope of services!*)
- a photographic documentation of the vehicle

Basis for the order

This product is based on the guidelines for vehicle returns and valuations published by Alphabet Fleet GmbH. The expert makes the specific findings in each individual case objectively, within the framework of the prescribed standards, based on their own expertise.

The vehicle inspection takes place in a fully assembled, unassembled state.

Damage or defects that can only be detected during disassembly/diagnostic work or through further investigation remain within the realm of prognostic risk. An increased risk exists due to concealed defects caused by fraudulent misrepresentation and which were not identifiable by the expert.

Damage or defects resulting from normal use or wear and tear of the vehicle will be accepted in accordance with the applicable standard.

There was no explicit identification or monetary consideration of the expected features within the product.

Features which, in their nature and extent, slightly exceed normal use but do not constitute unacceptable damage, will be documented and indicated as signs of wear, if applicable.

Damage or defects that, according to the applicable standard, can no longer be attributed to normal use or wear and tear are listed under "Value Reducing Factors" in the product description.

Depending on the product specification, a monetary ID can be provided. If this takes place, the costs can be 100% d or pro rata depending on the vehicle's age and mileage.

Previous damages

Professionally repaired previous damages were found at the vehicle.

Comments

Der beiliegende Radsatz gehört nicht zur Ausstattung.



Figure 1: Diagonal front (left)



Figure 2: Diagonal front (right)



Figure 3: Diagonal rear (left)



Figure 4: Diagonal rear (right)



Figure 5: Interior - front



Figure 6: Interior - rear



Figure 7: Instrument cluster



Figure 8: Instrument panel



Figure 9: Interior 360° view



Figure 10: Cargo area



Figure 11: VIN



Figure 12: Mounted tyres



Figure 13: Documents

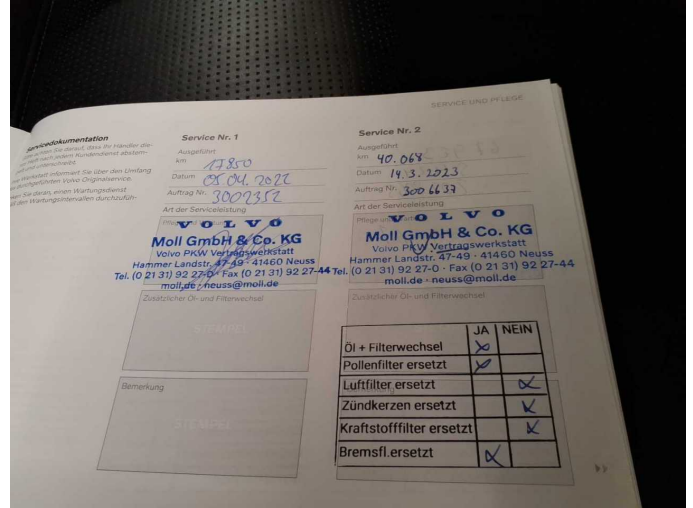


Figure 14: Documents

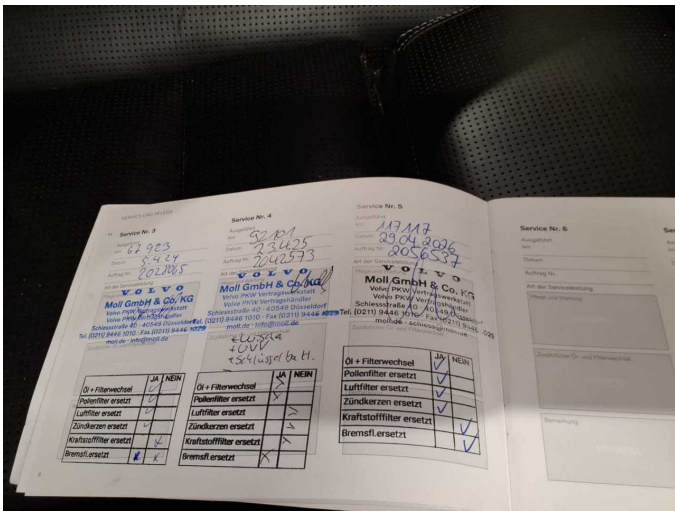


Figure 15: Documents



Figure 16: Additional tyres



Figure 17: Navigation



Figure 18: Misc.



Figure 19: Misc.



Figure 20: Misc.



Figure 21: Misc.



Figure 22: Misc.

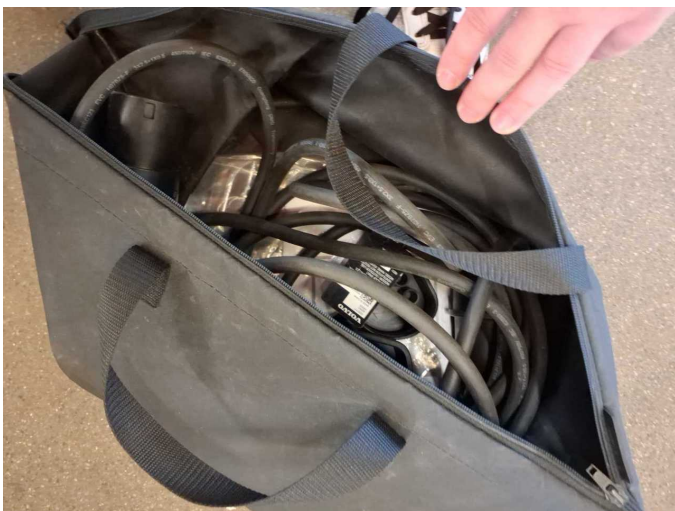


Figure 23: Misc.



Figure 24: Misc.



Figure 25: Misc.



Figure 26: Misc.



Figure 27: Misc.



Figure 28: Misc.



Figure 29: Misc.



Figure 30: Misc.



Figure 31: Misc.



Figure 32: Misc.



Figure 33: Misc.

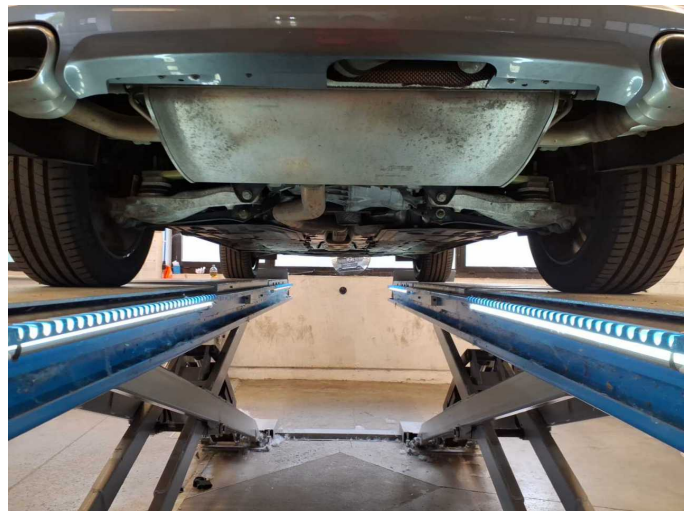


Figure 34: Misc.



Figure 35: Misc.

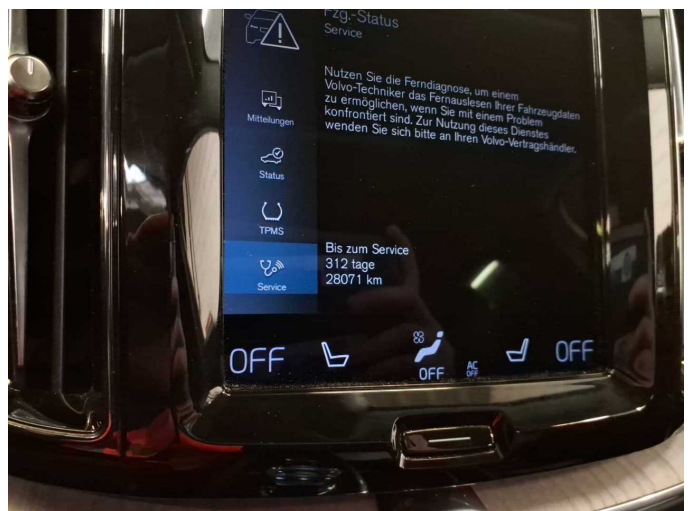


Figure 36: Misc.



Figure 37: Misc.

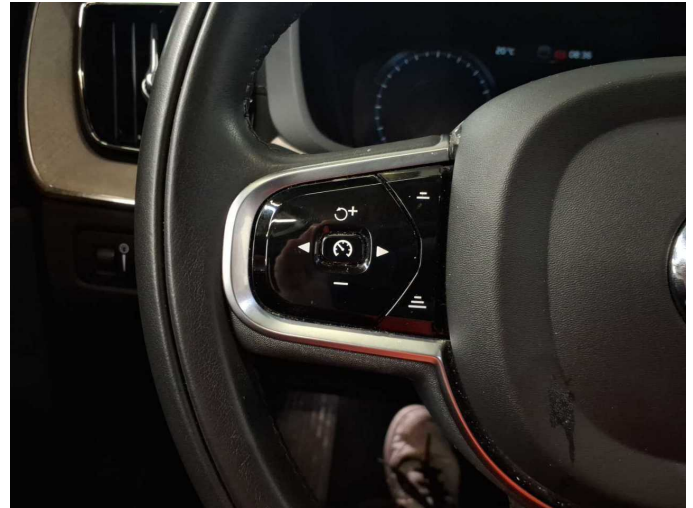


Figure 38: Misc.



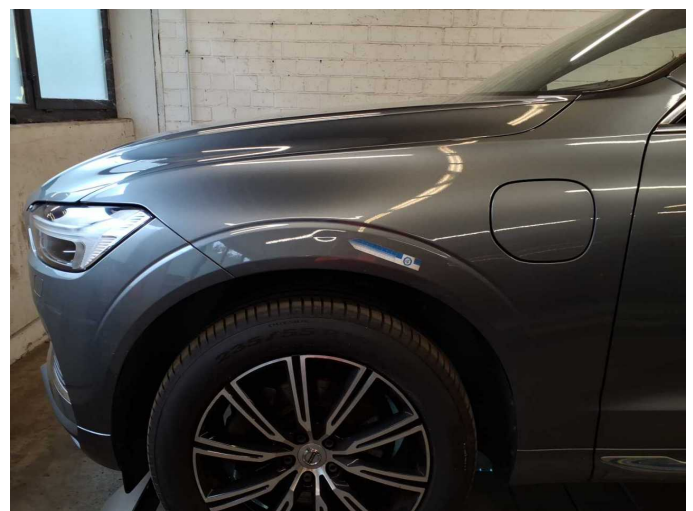
Damage 1: Equipment: Tirefit filler - Expired - Replace



Damage 2: Side panel - rear right side: Side panel - dent(s) - Smooth repair work



Damage 2: Side panel - rear right side: Side panel - dent(s) - Smooth repair work



Damage 3: Mudguard - left side: Mudguard - left side - dent(s) - Smooth repair work



Damage 3: Mudguard - left side: Mudguard - left side - dent(s) - Smooth repair work



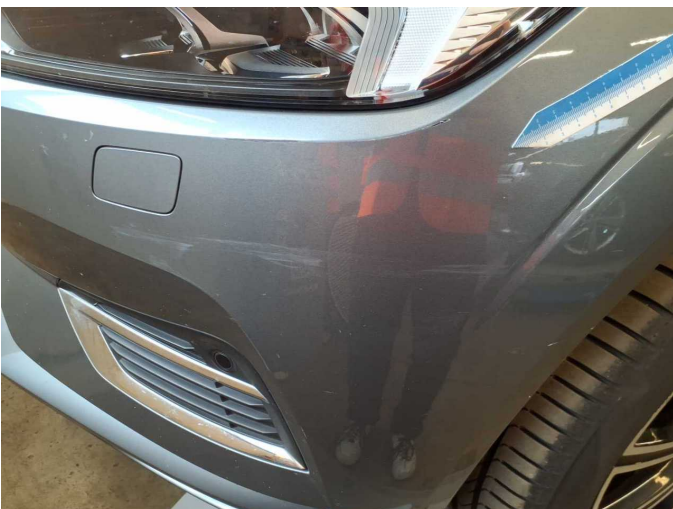
Damage 4: Front bumper: Front bumper - Scratch(es) - Smart repair



Damage 4: Front bumper: Front bumper - Scratch(es) - Smart repair



Damage 4: Front bumper: Front bumper - Scratch(es) - Smart repair



Damage 4: Front bumper: Front bumper - Scratch(es) - Smart repair



Damage 4: Front bumper: Front bumper - Scratch(es) - Smart repair



Damage 5: Rear bumper: Rear bumper (Ladekante) - Scratch(es) - Smart repair



Damage 5: Rear bumper: Rear bumper (Ladekante) - Scratch(es) - Smart repair



Damage 5: Rear bumper: Rear bumper (Ladekante) - Scratch(es) - Smart repair



Damage 6: Side panel - rear left side: Side panel (Vogelkotverätzung-Mehrkosten möglich) - Paint defect - Conditioning



Damage 6: Side panel - rear left side: Side panel (Vogelkotverätzung-Mehrkosten möglich) - Paint defect - Conditioning



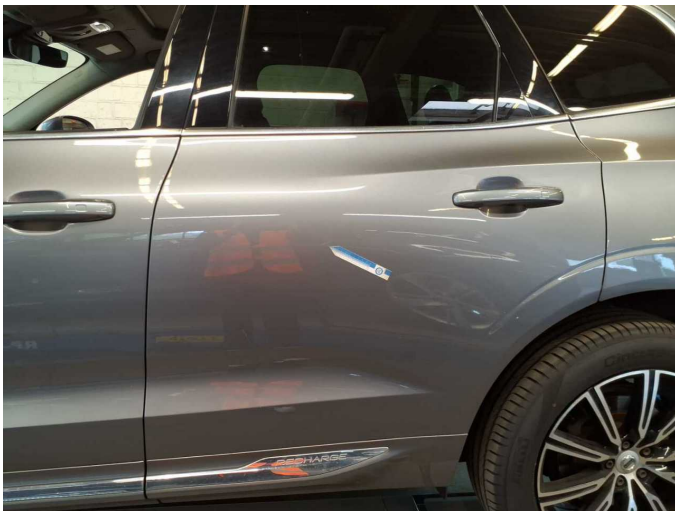
Damage 6: Side panel - rear left side: Side panel (Vogelkotverätzung-Mehrkosten möglich) - Paint defect - Conditioning



Damage 8: Seat - front: Seat cover - left side - Holes - Replace



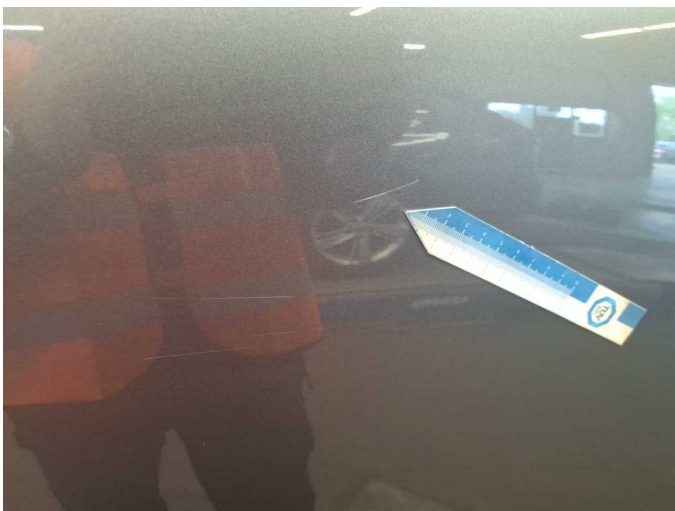
Damage 8: Seat - front: Seat cover - left side - Holes - Replace



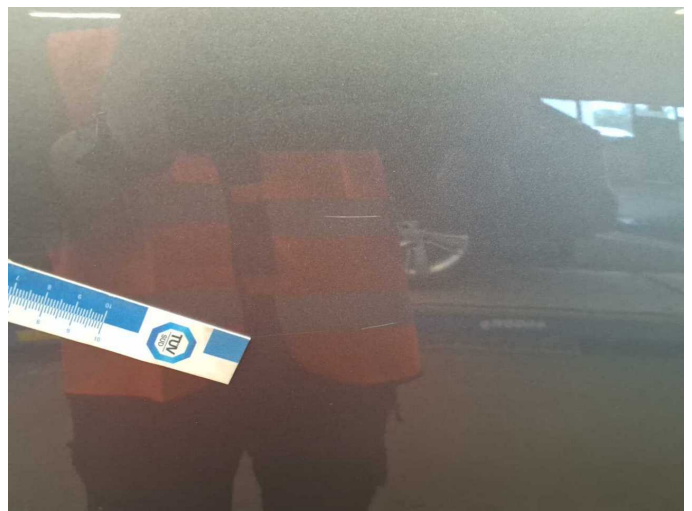
Damage 9: Door - rear left side: Door - Scratch(es) - Paint



Damage 9: Door - rear left side: Door - Scratch(es) - Paint



Damage 9: Door - rear left side: Door - Scratch(es) - Paint



Damage 9: Door - rear left side: Door - Scratch(es) - Paint



Damage 10: Wheel / tyres: Alloy rim - front right side - Scratched - Replace



Damage 10: Wheel / tyres: Alloy rim - front right side - Scratched - Replace



Repainting 1: Side panel - rear left side, Door - front left side



Repainting 1: Side panel - rear left side, Door - front left side



Wartungshistorie

(gemäß Auftraggeber Informationen)

Fahrgestellnummer: LYVUZBFVDMB790085

Hersteller / Modell: VOLVO VOLVO XC60 T6 AWD Recharge Geartronic Inscription

Datum	KM-Stand	Beschreibung
29.04.2026	117.117	AU; Luftfiltereinsatz ern; Motoröl b. Wartung; Ölfilter ern; Regelwartungsdienst; Reparatur Sonstiges; Wartung Sonstiges; Zündkerzen ern
18.08.2025	100.204	Systemtest/Eigendiagnose
23.04.2025	92.101	Bremsflüssigkeit; Bremsflüssigkeit ern; Motoröl b. Wartung; Ölfilter ern; Regelwartungsdienst; Wartung Sonstiges
04.07.2024	74.186	Systemtest/Eigendiagnose
05.04.2024	67.923	AU; Luftfiltereinsatz ern; Motoröl b. Wartung; Ölfilter ern; Regelwartungsdienst; Reparatur Sonstiges; Systemtest/Eigendiagnose; Wartung Sonstiges; Zündkerzen ern
28.07.2023	52.266	Systemtest/Eigendiagnose
14.03.2023	40.068	Bremsflüssigkeit; Bremsflüssigkeit ern; Motoröl b. Wartung; Ölfilter ern; Regelwartungsdienst; Wartung Sonstiges
05.04.2022	17.850	Motoröl b. Wartung; Ölfilter ern; Regelwartungsdienst; Reparatur Sonstiges; Wartung Sonstiges