

Expertise

Protocol number: 46275888
Order No. / Reference: 26652927
Inspection date: 2 Jul 2026

Manufacturer: Peugeot

Model: 308 SW BlueHDi 130 EAT8 Stop & Start GT

VIN: VF3LCYHZKLS293138



Vehicle details

Manufacturer / Type / Model / Equipment

Peugeot 308 SW BlueHDi 130 EAT8 Stop & Start GT

Vehicle Identification number VF3LCYHZKLS293138

Mileage (Read) 83,096 km

First registration 27 Nov 2020

Number of holders 2

Power / Engine displacement 96 kw / 1,499 ccm

Fuel type / Cylinder Diesel / 4

Gearbox / Number of gears Automatic / 8

Type of drive Front drive

Type of vehicle Station wagon

Colour / colour code Perla Nera Schwarz
Metallic

Doors / Seats 5 / 5

Upholstery type Cloth / leather
combination

Colour of upholstery Black-Red

Vehicle with smoke odor no

readiness to drive Not roadworthy /
moveable



Equipment

Standard equipment

- Airbags (6)
- Automatic Cruise Control (ACC)
- Electrically adjustable and heated exterior mirrors
- Hill start assist
- Chrome trim strips on the side windows
- Roof rails in aluminum look
- Digital instrument cluster with high-resolution 10" screen, adjustable and customizable
- Third brake light
- Rear parking aid (acoustic and visual)
- Stainless steel door sill plates
- FAP diesel particulate filter
- Misfueling protection
- electric parking brake
- Front grille in racing flag pattern
- luggage compartment roller blind
- Seat belts: 3-point safety belts in all seats
- Heated rear window
- Interior mirror automatically dimming
- ISOFIX - 2 child seat anchor points on the rear seat
- Keyless system
- Automatic climate control (2-zone), with activated carbon filter
- Paint finish: Snow white
- Steering wheel: Multifunction leather steering wheel
- front center armrest
- Navigation system: 3D navigation system NAC
- Package: Full LED Package
- Package: Comfort Package
- Package: Safety Package Plus
- Upholstery: Faux leather/fabric "Oxford" black with decorative stitching in red
- Radio accessories: Digital radio reception DAB+
- Tire pressure monitoring system
- Wheels: Tire repair kit (compressor + spray)
- paddle shifters on the steering wheel
- Electric, speed-sensitive power steering
- Seats: Driver's seat height adjustable
- Seats: Manual lumbar support for driver
- 12-volt socket in the trunk
- Daytime running lights: LED daytime running lights
- Immobiliser
- Central locking can be activated from inside, with remote control

Extra equipment

- Paint finish: Special metallic paint

- Anti-lock braking system
- Electrically folding exterior mirrors
- Exterior mirrors with mirror caps in Perla Nera Black
- On-board computer
- Black headliner
- Ceiling light - LED at the front, 2 LED reading lights at the front and rear
- Tachometer
- EBV (Electronic Brakeforce Distribution)
- Front parking aid, acoustic and visual
- ESP (Electronic Stability Program) with ASR (Anti-Slip Regulation)
- Electric windows, front and rear
- Follow-me-home function (automatic)
- Floor mats
- Transmission: 8-speed automatic transmission EAT8
- LED taillights
- Rear window and rear side windows are more heavily tinted.
- Map pockets on the front seatbacks
- Child safety locks on the rear doors
- Front headrests (2)
- Rear headrests (3)
- Steering wheel adjustable for height and reach
- light sensor
- Multimedia: Mirror Screen
- Emergency brake assist with automatic activation of the hazard warning lights
- Package: Safety Package
- Package: Sport mode
- Radio: RCC audio system
- Radio: Multifunctional touchscreen with 9.7" color display
- Rain sensor
- Wheels: Alloy wheels "Rubis" 7J x 17"
- Reversing camera with 180° surround view
- Front and rear windscreen wipers with intermittent function
- Seats: Passenger seat height adjustable
- Seats: Manual lumbar support for front passenger
- Seats: Rear bench seat and backrest 40/60 split folding
- Stop&Start system
- Pre-installation for WEBASTO auxiliary heater
- thermal insulation glazing



Brief expert findings

Documents submitted	At the time of the inspection, the vehicle registration certificate Part 2 (title) was available, but the vehicle registration certificate Part 1 (document) was not. (Copy)
VIN comparison	The vehicle identification number (VIN) was read from the vehicle and its conformity with the submitted documents was confirmed by the undersigned during the inspection.
Inspection	The inspection conditions were sufficient for the assessment of the vehicle. Lifting equipment and/or a pit were available for examining the vehicle.
Test drive	A short maneuvering and shunting exercise was carried out on the company premises.
Engine function test	An engine test run was performed.
readiness to drive	The vehicle was not capable of driving under its own power at the time of inspection, but can be moved on its own axle with the aid of assistance.

Value reducing factors

No.	Component group	Description
1	Equipment	Tirefit filler - Due - Replace
2	Wheel / tyres	Tyre - rear right side - Broken / torn - Replace
3	Indicator - front	Mirror - right side - Scratch(es) - Replace
4	Wheel / tyres	Alloy rim - rear right side - Scratched - Loss in value
5	Wing mirror - right side	Mirror housing - Scratch(es) - Replace
6	Misc.	Inspection / maintenance - Due - Perform

Wear and tear

No.	Component group	Description
1	2nd wheel set	1 tyre (4mm) - Does not meet the leasing specifications - No deduction
2	Front bumper	Front bumper - Stone chips - No deduction
3	Rear bumper	Rear bumper - Scratch(es) - No deduction
4	Sill - left side	Sill - Scratch(es) - No deduction
5	Roof	Roof - Scratch(es) - No deduction

The vehicle shows signs of wear and tear commensurate with its age and use.

Repainting

No.	Repainting
1	Bonnet, Professionally carried out, Invoice of repair done Non-existent

Paint coat thickness measurement

Bonnet	207 µm
--------	--------

Order/Scope of Order

An order was placed to prepare a sales report for the described vehicle. This report includes the following:

- Description of key vehicle information
- Documentation of equipment features
(*Delivery by third-party service providers*)
- Documentation of damage, defects, missing parts
- Documentation of prior damage, unrepaired prior damage, repainting
- A brief visual or functional inspection of the equipment details, if possible.
(*Functional testing of driver assistance systems is not included in the scope of services!*)
- a photographic documentation of the vehicle



Basis for the order

This product is based on the guidelines for vehicle returns and valuations published by Alphabet Fleet GmbH. The expert makes the specific findings in each individual case objectively, within the framework of the prescribed standards, based on their own expertise.

The vehicle inspection takes place in a fully assembled, unassembled state.

Damage or defects that can only be detected during disassembly/diagnostic work or through further investigation remain within the realm of prognostic risk. An increased risk exists due to concealed defects caused by fraudulent misrepresentation and which were not identifiable by the expert.

Damage or defects resulting from normal use or wear and tear of the vehicle will be accepted in accordance with the applicable standard.

There was no explicit identification or monetary consideration of the expected features within the product.

Features which, in their nature and extent, slightly exceed normal use but do not constitute unacceptable damage, will be documented and indicated as signs of wear, if applicable.

Damage or defects that, according to the applicable standard, can no longer be attributed to normal use or wear and tear are listed under "Value Reducing Factors" in the product description.

Depending on the product specification, a monetary ID can be provided. If this takes place, the costs can be 100% d or pro rata depending on the vehicle's age and mileage.

Previous damages

No apparent prior damage that had been repaired could be found on the vehicle.

Comments

- Die erste Seite der ZBII wurde nicht übermittelt. Es ist nicht ersichtlich, ob das Fahrzeug vorher als Mietwagen genutzt wurde.
- Winterradsatz ist kein Bestandteil des Auslieferungsumfangs.



Figure 1: Diagonal front (left)



Figure 2: Diagonal front (right)



Figure 3: Diagonal rear (left)



Figure 4: Diagonal rear (right)



Figure 5: Interior - front



Figure 6: Interior - rear



Figure 7: Instrument cluster



Figure 8: Instrument panel



Figure 9: Interior 360° view



Figure 10: Cargo area

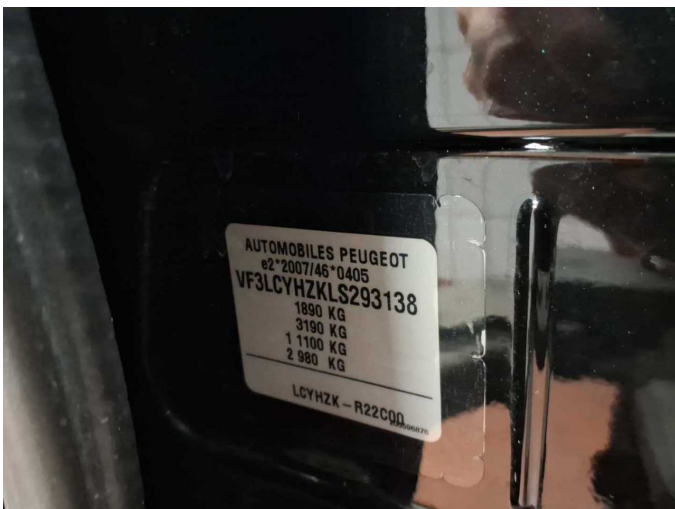


Figure 11: VIN



Figure 12: Mounted tyres



Figure 13: Documents



Figure 14: Documents



Figure 15: Additional tyres



Figure 16: Navigation

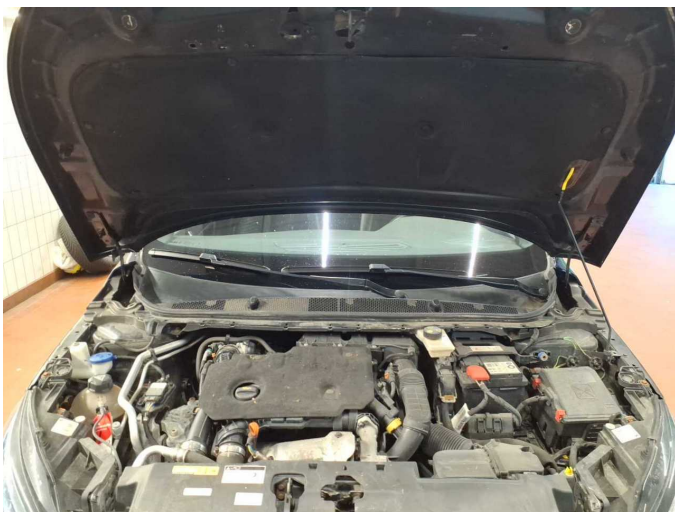


Figure 17: Misc.



Figure 18: Misc.



Figure 19: Misc.



Figure 20: Misc.



Figure 21: Misc.



Figure 22: Misc.



Figure 23: Misc.



Figure 24: Misc.



Figure 25: Misc.



Figure 26: Misc.



Figure 27: Misc.



Figure 28: Misc.

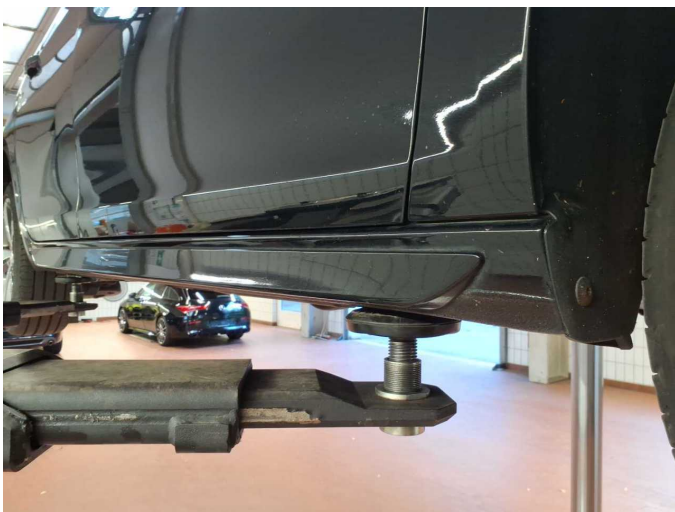


Figure 29: Misc.



Figure 30: Misc.



Damage 1: Equipment: Tirefit filler - Due - Replace



Damage 2: Wheel / tyres: Tyre - rear right side - Broken / torn - Replace



Damage 2: Wheel / tyres: Tyre - rear right side - Broken / torn - Replace



Damage 3: Indicator - front: Mirror - right side - Scratch(es) - Replace



Damage 3: Indicator - front: Mirror - right side - Scratch(es) - Replace



Damage 4: Wheel / tyres: Alloy rim - rear right side - Scratched - Loss in value



Damage 4: Wheel / tyres: Alloy rim - rear right side - Scratched - Loss in value



Damage 4: Wheel / tyres: Alloy rim - rear right side - Scratched - Loss in value



Damage 4: Wheel / tyres: Alloy rim - rear right side - Scratched - Loss in value



Damage 4: Wheel / tyres: Alloy rim - rear right side - Scratched - Loss in value



Damage 5: Wing mirror - right side: Mirror housing - Scratch(es) - Replace



Damage 5: Wing mirror - right side: Mirror housing - Scratch(es) - Replace



Damage 6: Misc.: Inspection / maintenance - Due - Perform



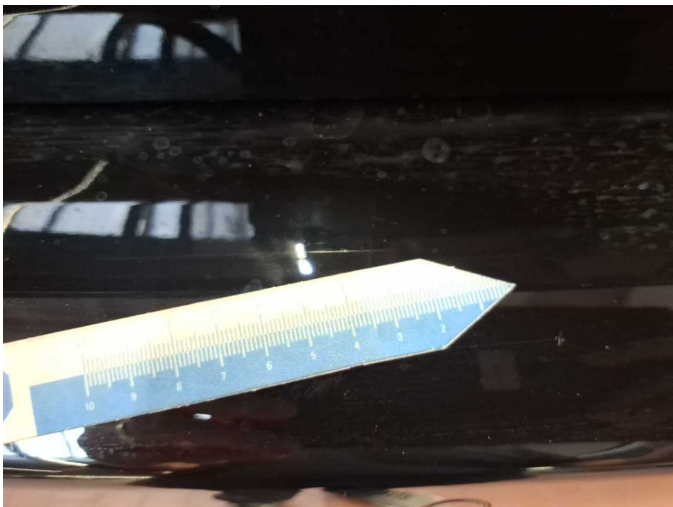
Wear and tear 2: Front bumper: Front bumper - Stone chips - No deduction



Wear and tear 2: Front bumper: Front bumper - Stone chips - No deduction



Wear and tear 2: Front bumper: Front bumper - Stone chips - No deduction



Wear and tear 3: Rear bumper: Rear bumper - Scratch(es) - No deduction



Wear and tear 3: Rear bumper: Rear bumper - Scratch(es) - No deduction



Repainting 1: Bonnet



Wartungshistorie

(gemäß Auftraggeber Informationen)

Fahrgestellnummer: VF3LCYHZKLS293138

Hersteller / Modell: PEUGEOT PEUGEOT 308 SW BlueHDi 130 EAT8 Stop & Start GT

Datum	KM-Stand	Beschreibung
14.03.2025	65.310	Bremsflüssigkeit; Bremsflüssigkeit ern; Kraftstofffilter ern; Luftfiltereinsatz ern; Motoröl b. Wartung; Ölfilter ern; Regelwartungsdienst; Wartung Sonstiges
24.11.2023	46.465	HU + AU; Motoröl b. Wartung; Ölfilter ern; Regelwartungsdienst; Wartung Sonstiges
05.12.2022	23.986	Bremsflüssigkeit ern; Motoröl b. Wartung; Regelwartungsdienst
15.02.2022	14.253	Bremsscheiben + Klötze h; Bremsscheiben + Klötze v
02.12.2021	9.221	Kleine Inspektion; Motoröl b. Wartung