

Expertise

Protocol number: 46318173
Order No. / Reference: 26457323
Inspection date: 3 Jul 2026

Manufacturer: Ford

Model: Focus 1.0 EcoBoost Start-Stop-System TITANIUM

VIN: WF0NXXGCHNPD64536



Vehicle details

Manufacturer / Type / Model / Equipment

Ford Focus 1.0 EcoBoost Start-Stop-System TITANIUM

Vehicle Identification number WF0NXXGCHNPD64536

Mileage (Read) 64,590 km

First registration 4 Apr 2023

Number of holders 1

Next periodical technical inspection 04/2028

(Report on hand)

Power / Engine displacement 92 kw / 999 ccm

Fuel type / Cylinder Petrol / 3

Gearbox / Number of gears Manual / 6

Type of drive Front drive

Type of vehicle Saloon car

Colour / colour code Frozen White

Doors / Seats 5 / 5

Upholstery type Cloth

Colour of upholstery Black



Vehicle details

Maintenance booklet / proof	Available / complete	Next maintenance in	84 %
Last service on / at	04/2026 at 59,734 km		
Key is / should be	1 / 2	FZG documents	ZB#2 (B) was available (copy), ZB#1 (S) was not available.
		Letter No.	GT891157
Previous damage / Accident	None detectable	Repainting	None detectable
Inspection conditions	sufficient	Lifting equipment / pit	No
Test drive	Not performed	Engine function test	Performed
Manufacturer key number/ type code number	8566 / BPO 00638		
Emission standard	EURO6;WLTP;AP;PI/CI; M, N1 I	fine dust sticker	
Permitted total weight	1,895 kg	Empty weight	

Tyres

Mounted tyres

#	Tyre size	Type of tyre	Manufacturer	Tread depth
1)	205/60 R16 92V	Summer tyres on Steel rim with wheel cover	Goodyear	4mm / 4mm
2)	205/60 R16 92V	Summer tyres on Steel rim with wheel cover	Goodyear	4mm / 4mm

Replacement

Typ	Tyre size	Type of tyre	Manufacturer	Tread depth
Tirefit		Expiration date 03/2027		

Legend: Tread depth information for the left tire is listed first, for the right tire it is listed second on the axle in the direction of travel.



Equipment

Standard equipment

- Airbag: Passenger airbag deactivation
- Electrically folding exterior mirrors
- Exterior mirrors in body color, driver and passenger side, electrically adjustable and heated
- Fabric headliner
- Tachometer
- Driver information system with on-board computer, color (10.7 cm screen diagonal)
- Electronic parking brake
- FordPass Connect including eCall, live traffic information (only with navigation) and Wi-Fi hotspot
- Cruise control
- Illuminated glove compartment
- rear window wiper
- Interior mirror, automatically dimming
- Isofix bracket
- Headrests: 2 front and 3 rear, height adjustable
- LED headlights
- Steering wheel: 3-spoke design
- Make-up mirrors in driver and passenger sun visors
- MyKey key system (individually programmable second key)
- Otto particulate filter
- Front and rear parking pilot system
- Post-Collision Assist
- Tire repair kit
- Windscreen wipers with rain sensor (sensitivity adjustable)
- Electromechanical speed-dependent power steering
- Seats: Driver's seat height adjustable
- Seats: Rear seat backrest
- Seats: Front sports seats with enhanced lateral support
- Carpet floor mats in the front
- Electronic immobilizer
- Central locking with remote control and remote luggage compartment release
- Anti-lock braking system (ABS) with electronic brake force distribution (EBD)
- Tires: 6.5 J x 16 design wheels (4) with 205/60 R16 tires
- Hill start assist
- Roof spoiler painted in car color
- Electronic Safety and Stability Program (ESP)
- Lane keeping assist including lane keeping assist
- Electric windows front and rear
- Ford Power Start function
- Luggage compartment cover
- Speed limiter
- Transmission: 6-speed manual transmission
- Back window, heater
- Interior lighting with LED technology
- Intelligent security system
- Air conditioning with automatic temperature control
- LED taillights
- Leather gear knob
- Adjustable steering column
- Center console "Premium" front
- Navigation: Ford SYNC 4 including Ford navigation system with AppLink, 13.2" touchscreen and DAB/DAB+
- Upholstery: Cloth
- Pre-Collision Assist
- Tire Pressure Monitoring System (TMPS)
- Headlight assistant with day/night sensor
- Seats: Passenger seat height-adjustable, manually
- Seats: Map grid on the driver's and front passenger's seat backrests
- Start-stop system
- Warning system for unfastened seat belts for the 1st and 2nd rows of seats

Extra equipment

- Paint finish: Frozen White

Brief expert findings

Documents submitted	At the time of the inspection, the vehicle registration certificate Part 2 (title) was available, but the vehicle registration certificate Part 1 (document) was not. (Copy)
VIN comparison	The vehicle identification number (VIN) was read from the vehicle and its conformity with the submitted documents was confirmed by the undersigned during the inspection.
Inspection	The inspection conditions were sufficient for the assessment of the vehicle. No lifting equipment or pit was available for inspecting the vehicle. Therefore, inspection of the vehicle's underside was only possible to a limited extent.
Test drive	No test drive/shunting maneuver was carried out during the inspection of the vehicle.
Engine function test	An engine test run was performed.



Value reducing factors

No.	Component group	Description
1	Boot lid / rear door	Boot lid - dent(s) - Smooth repair work

Wear and tear

No.	Component group	Description
1	Bonnet	Bonnet - Stone chips - No deduction
2	Vehicle glazing	Windscreen - Stone chips - No deduction
3	Front bumper	Front bumper - Stone chips - No deduction
4	Interior	Interior - Scratch(es) - No deduction
5	Rear bumper	Rear bumper - Scratch(es) - No deduction

The vehicle shows signs of wear and tear commensurate with its age and use.

Missing parts

Description

Equipment - Tirefit compressor

Equipment - Vehicle key

Order/Scope of Order

An order was placed to prepare a sales report for the described vehicle. This report includes the following:

- Description of key vehicle information
- Documentation of equipment features
(*Delivery by third-party service providers*)
- Documentation of damage, defects, missing parts
- Documentation of prior damage, unrepaired prior damage, repainting
- A brief visual or functional inspection of the equipment details, if possible.
(*Functional testing of driver assistance systems is not included in the scope of services!*)
- a photographic documentation of the vehicle

Basis for the order

This product is based on the guidelines for vehicle returns and valuations published by Alphabet Fleet GmbH. The expert makes the specific findings in each individual case objectively, within the framework of the prescribed standards, based on their own expertise.

The vehicle inspection takes place in a fully assembled, unassembled state.

Damage or defects that can only be detected during disassembly/diagnostic work or through further investigation remain within the realm of prognostic risk. An increased risk exists due to concealed defects caused by fraudulent misrepresentation and which were not identifiable by the expert.

Damage or defects resulting from normal use or wear and tear of the vehicle will be accepted in accordance with the applicable standard.

There was no explicit identification or monetary consideration of the expected features within the product.

Features which, in their nature and extent, slightly exceed normal use but do not constitute unacceptable damage, will be documented and indicated as signs of wear, if applicable.

Damage or defects that, according to the applicable standard, can no longer be attributed to normal use or wear and tear are listed under "Value Reducing Factors" in the product description.

Depending on the product specification, a monetary ID can be provided. If this takes place, the costs can be 100% d or pro rata depending on the vehicle's age and mileage.



Previous damages

No apparent prior damage that had been repaired could be found on the vehicle.

Comments

- Die Unterbodenbesichtigung war nur ebenerdig und eingeschränkt möglich.
- Mehrkosten möglich .



Figure 1: Diagonal front (left)



Figure 2: Diagonal front (right)



Figure 3: Diagonal rear (left)



Figure 4: Diagonal rear (right)



Figure 5: Interior - front



Figure 6: Interior - rear



Figure 7: Instrument cluster



Figure 8: Instrument panel



Figure 9: Interior 360° view



Figure 10: Cargo area



Figure 11: VIN

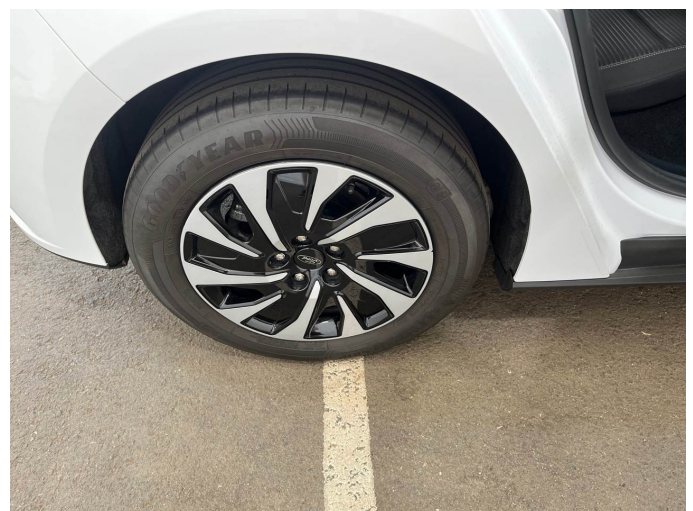


Figure 12: Mounted tyres



Figure 13: Documents

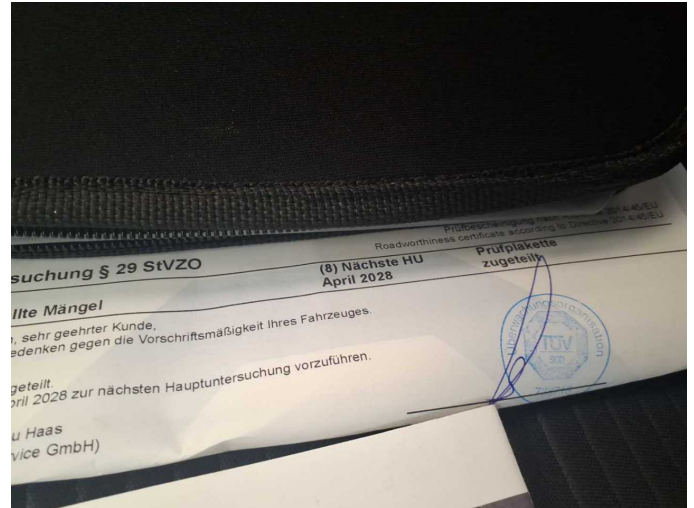


Figure 14: Documents

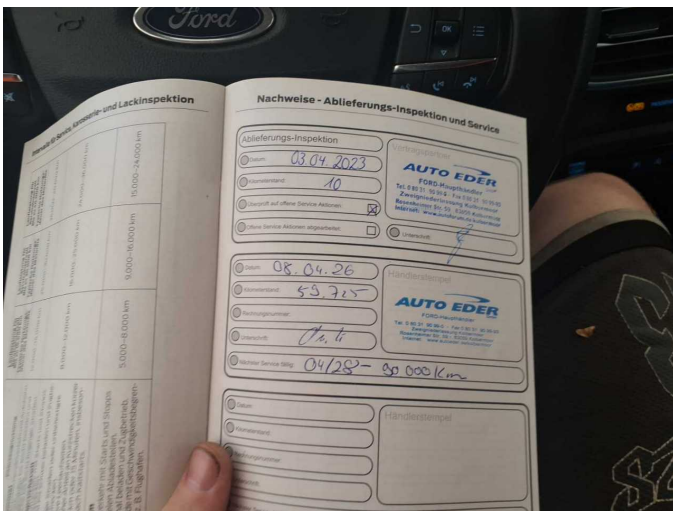


Figure 15: Documents

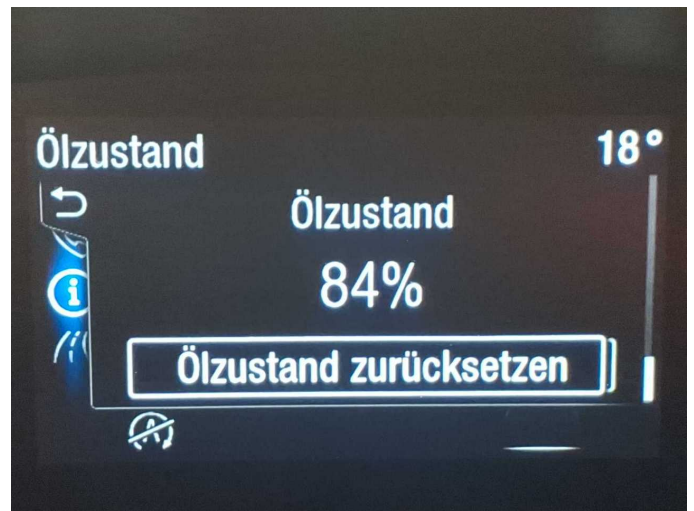


Figure 16: Documents



Figure 17: Navigation

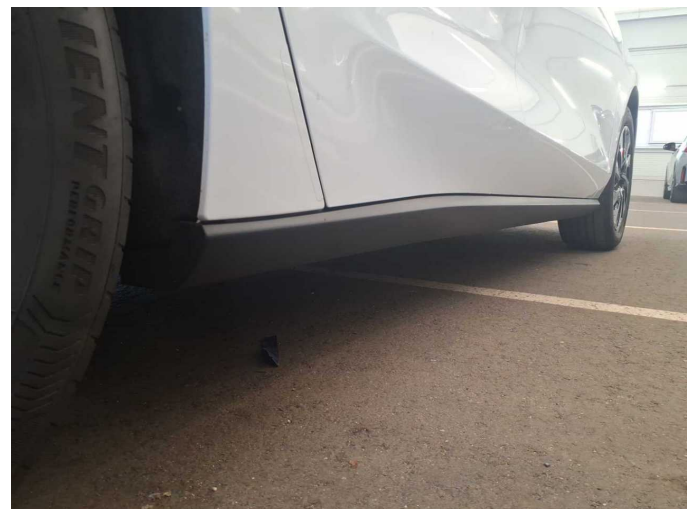


Figure 18: Misc.



Figure 19: Misc.



Figure 20: Misc.



Figure 21: Misc.



Figure 22: Misc.



Figure 23: Misc.



Figure 24: Misc.



Figure 25: Misc.



Figure 26: Misc.



Figure 27: Misc.



Figure 28: Misc.



Figure 29: Misc.



Figure 30: Misc.



Figure 31: Misc.



Figure 32: Misc.



Damage 1: Boot lid / rear door: Boot lid - dent(s) - Smooth repair work



Damage 1: Boot lid / rear door: Boot lid - dent(s) - Smooth repair work



Damage 1: Boot lid / rear door: Boot lid - dent(s) - Smooth repair work



Wear and tear 1: Bonnet: Bonnet - Stone chips - No deduction



Wear and tear 2: Vehicle glazing: Windscreen - Stone chips - No deduction



Wear and tear 3: Front bumper: Front bumper - Stone chips - No deduction



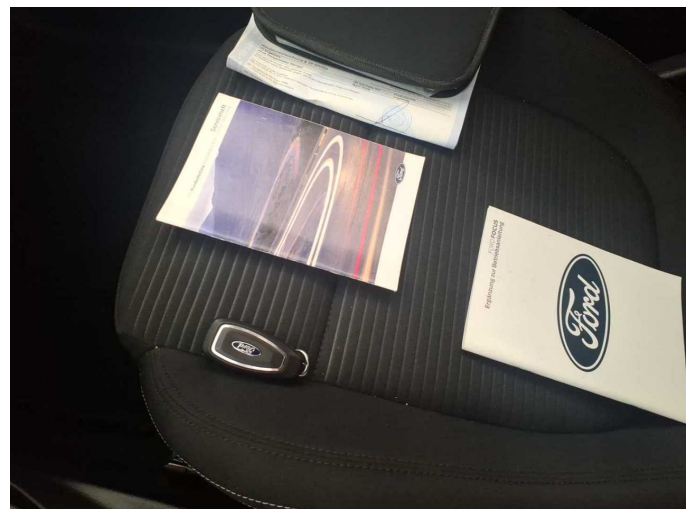
Wear and tear 3: Front bumper: Front bumper - Stone chips - No deduction



Wear and tear 5: Rear bumper: Rear bumper - Scratch(es) - No deduction



Missing part 1: Equipment: Tirefit compressor - Missing - Replace



Missing part 2: Equipment: Vehicle key - Missing - Replace



Wartungshistorie

(gemäß Auftraggeber Informationen)

Fahrgestellnummer: WF0NXXGCHNPD64536

Hersteller / Modell: FORD FORD Focus 1.0 EcoBoost Start-Stopp-System TITANIUM

Datum	KM-Stand	Beschreibung
09.04.2026	59.734	Bremse Sonstiges; Bremsflüssigkeit; Bremsflüssigkeit ern; Bremsklötze hinten; Bremsscheiben + Klötze h; Bremsscheiben hinten; Luftfiltereinsatz ern; Motoröl b. Wartung; Ölfilter ern; Regelwartungsdienst; Wartung Sonstiges; Zündkerzen ern
18.10.2024	29.559	Motoröl b. Wartung; Ölfilter ern; Regelwartungsdienst; Wartung Sonstiges; Wartung Sonstiges