



Assessment

- Vehicle Inspection Report -

Number: 10263824
From: 20.03.2026

» Overview

Type:

Client:

Order number:

Order creation date:

Order completed:

Inspection location:

Visited by:

Present at appraisal:

Report number:

VIN:

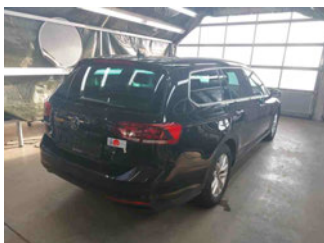
WVWZZZ3CXRE034258

License plate:

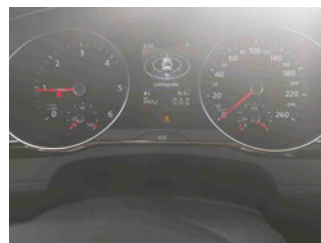
Contract number:



Front Left 3/4



Rear Right 3/4



Mileage

» Costs & Value Summary

	Without tax	19% VAT	Total with tax
Repair costs (estimated)	€ 3,651.75	€ 693.83	€ 4,345.58
Net cost (estimated)	€ 2,982.83	€ 566.74	€ 3,549.57



Assessment

- Vehicle Inspection Report -

Number: 10263824
From: 20.03.2026

» Vehicle Data

Vehicle category:	Passenger Car
Vehicle type:	EstateCar
Make:	Volkswagen
Model:	Passat
Manufacturers and type code:	0603 / BQS
Date of first registration:	08.03.2024
Mileage:	89,552 km
Proof of mileage:	ReadOff
Exterior colour:	Deep Black Perleffekt
Roof colour:	Deep Black Perleffekt
Propulsion:	Front
Fuel:	Diesel
Engine size (cc):	2,000 ccm
Performance:	110 kW (150 PS)
Length:	
Height:	
Width:	
Permitted total weight:	
Wheelbase:	
Number of powered axles:	2
Cylinders:	4
Euronorm:	Euro 6
Number of doors:	4
Number of seats:	5
Gearbox:	Automatic 7-speed
Upholstery type:	Lining fabrics
Interior colour:	Titanschwarz/Titanschwarz/Titanschwarz
Number of keys:	1

» Documents & Maintenance

Statutory inspection date:	
Registration certificate available:	No
Registration certificate received:	No
License plate:	None
Maintenance book:	Digital
Maintenance:	Not testable
Maintenance last date:	
Maintenance last mileage:	
Remainder until next maintenance:	232 Day(s)



Assessment

- Vehicle Inspection Report -

Number: 10263824
From: 20.03.2026

12-V outlet in center console in rear and in luggage compartment	Decorative inserts "Cross Hatch" for dashboard and door trim panels
2 beverage holders in front with cover	Decorative inserts "Piano Black" for center console
2 USB-C ports in the front, charging capacity up to 45 W	Digital radio reception DAB+
3 head restraints in rear	Disc brakes in front
3-point seat belt for center rear seat	Disc brakes in rear
3-point seat belts for outer rear seats	Diversity antenna for FM reception
3-point seat belts in front with height adjustment and seat belt pretensioners	Door and side trim panel in foam film and woven fabric
4 AirStop® all-season tires 215/60 R16	Driver alert system
4 alloy wheels "Sepang" 6.5J x 16	Driver and front passenger airbag with front passenger airbag deactivation
4-cylinder diesel engine 2.0 l	Driving on the right
4-cylinder diesel engine 2.0 l TDI, 110 kW	Dual-clutch transmission DSG DQ381
7-speed automatic transmission or dual-clutch transmission DSG, note: PR family EDF	Dynamic Road Sign Display
8 speakers	Electric auxiliary air heater
Adaptive Cruise Control ACC stop & go incl. speed limiter	Electromechanical parking brake with Auto Hold function
Air Care Climatronic 3 zone automatic climate control with enhanced air filter with activated carbon	Electromechanical speed-sensitive power steering
AirStop® all-season tires 215/60 R16	Electronic engine sound
Alloy spare wheel with original equipment tire	Electronic immobilizer
Alternator 140 A	Electronic Stability Control and electromechanical brake booster
App-Connect Wireless for Apple CarPlay and Android Auto	Elimination of nameplate for model designation on luggage compartment lid
Aspherical exterior mirror on driver side	Emergency call service, 10-year contract duration as of initial delivery, condition: mob. phone network available
Aut. headlight control with separate daytime running light, entry lighting and manual exit lighting	Emission standard EU6 AP
Auto-dimming interior rearview mirror	Equipment options subset for Germany
Automatically-heated washer nozzles in front	Ext. mirror w/surround lighting a. frontpassenger ext. mirror lowering function, folding/heated, auto-dimming on dr. side
Autonomous Emergency Braking Front Assist (for Adaptive Cruise Control ACC up to 210 km/h)	First aid kit, warning triangle and safety vest
Basic equipment variant	Folding luggage compartment floor
Battery 420 A (70 Ah)	Folding trailer hitch, with electric release
Black roof rails	Front center armrest, height- and longitudinally adjustable, w/ storage comp., 2 vents w/ chrome louvers in rear
Body-colored lower side trims	Front seats with height adjustment, ergoComfort seat on driver side, with electrical backrest adjustment
Bumpers with body-colored decorative trims	Front vent and rotary light switch illuminated, with chrome bezel
Business	Front-wheel drive
Carpet mats in front and rear	Fuel system for diesel engine
Carrier frequency 433.92 MHz-434.42 Mhz	Fuel tank with a volume of 66 l
Category 0	Gearshift knob in leather
Child safety lock	Headlight range control
Chrome trims on the side windows	Heated front seats
Comfort seats in front	Hill Start Assist
Curtain airbag system for front and rear passengers incl. side airbags in front	



Assessment

- Vehicle Inspection Report -

Number: 10263824
From: 20.03.2026

Illuminated vanity mirror in sun visors, extractable sun visors	Preparation for We Connect and We Connect Plus or VW Connect and VW Connect Plus
Initial standard fuel filling	Privacy glass for rear side windows and rear window
Inserts of front seats and outer rear seats in fabric "Business"	Proactive passenger protection system in combination with Front Assist
Instrument cluster with electronic speedometer, odometer and trip odometer, tachometer	Radio
Interior lights with switch-off delay and dimmer, 2 LED reading lights in front and 2 in rear	Rain sensor
ISOFIX anchorage points for mounting of 2 child seats on rear bench seat, also for i-Size child seats	Rear exhaust tailpipe (standard)
Keyless Start without SAFELOCK	Rear fog light on one side, back-up light on both sides
Laminated safety glass windshield, heat- and sound-insulating	Rear shock absorption, basic version 1
Lane keeping system Lane Assist	Refrigerant R1234yf
Leather-wrapped multi-function steering wheel with shifting paddles	Regional code " ECE " for radio
LED entry/warning lights in front doors	Remote unlocking for tailgate/trunk lid
LED front fog lamps and cornering light	Right exterior mirror, convex
LED headlamps with LED separate daytime running light	Safety-optimized front head restraints, longitudinally and height adjustable
LED light unit in front footwell	Service indicator 30 000 km or 2 years (variable)
LED rear combination lamps	Shock absorption in front
Left-hand drive	Small navigation system M&I (Media & Internet package)
LongLife Service Regime	Smoker's package: Ashtray and cigarette lighter in front
Luggage compartment cover extractable and removable	Special identification label for EC for M1 passenger vehicles
Lumbar supports in front, power-adjustable on driver side	Standard battery/alternator capacity
Manual in German (Germany)	Standard climatic zones
Mass damper for steering wheel, 36 Hz	Standard engine starter
Mistral Gray headliner	Standard manufacturing sequence
Mobile phone interface "Comfort" with inductive charging feature	Standard paint coating
Multifunction camera	Standard pedal cluster
Multi-function display "Premium" with multi-color display	Standard roof
Navigation system "Discover Media" incl. Streaming & Internet	Standard wheel bolts
Net partition	Start-stop system with regenerative braking
No special edition	Suspension range 34 installation control only, no requirement forecast
No special purpose vehicle, standard equipment	Textile luggage compartment lining
Non-folding front passenger seat backrest	Tire Pressure Monitoring System
Not hot country	Tires without specification of tire brand
Online service, with OCU, with head unit coding, without engine immobilizer interconnection	Tool kit and jack
Operating permit, alteration	Two-tone horn
Operating voltage 12 V	Type approval country Germany
Park Distance Control - warning signals for obstacles in the front and rear	Unsplit rear bench seat, asymmetric folding backrest, center armrest with storage comp. and load-through hatch
Part set without country-specific prescriptive standard	Vehicle class differentiation -3G0-
Pedestrian Monitoring	Vehicles with special upgrade measures
Plastic loading edge protection	Wagon
Plastic scuff plates in door apertures	Warning signal and warning lamp for front and rear seat belts not fastened



Assessment

- Vehicle Inspection Report -

Number: 10263824
From: 20.03.2026

Weight range 4 installation control only, no requirement forecast Without voice control

Wheelbase

Winter package

With electronic steering column lock

Without activated carbon canister with SCR

Without Adaptive Chassis Control

Without add. lights (interior lighting)

Without additional front underbody guard

Without additional tires

Without alternative drive system

Without auxiliary heater/parking heater

Without camera systems/accident sensors

Without CD/DVD for navigation

Without charging cable

Without child seat

Without clock

Without delivery equipment

Without differential lock

Without ECO function

Without electric motor (hybrid)

Without fire extinguisher

Without front passenger seat control

Without garage door opener

Without headlamp washer system

Without head-up display

Without integrated toll system

Without lane change assist

Without light control

Without locking and starting systems

Without preparation for rotating beacon/siren combination

Without preparation for two-way radio installation

Without preparation for VTS (vehicle tracking system)

Without rear spoiler

Without roll-up sunshade

Without seat ventilation/massage seat

Without second battery

Without special body measures

Without surface protection, with additional transport protection measures

Without tie down straps/net/pocket

Without vehicle inlet



Assessment

- Vehicle Inspection Report -

Number: 10263824
From: 20.03.2026

» Tyres

MOUNTED TYRES

Make	Location	Position	Type	Rim	Dimensions	Profile depth
Other	Front	Left	All season	Aluminium	215/60 R 16 99 V	4.0 mm
Other	Front	Right	All season	Aluminium	215/60 R 16 99 V	6.0 mm
Other	Rear	Left	All season	Aluminium	215/60 R 16 99 V	6.0 mm
Other	Rear	Right	All season	Aluminium	215/60 R 16 99 V	6.0 mm

Permitted: Yes

Roadworthy: Yes

SPARE/EMERGENCY TYRE & ACCESSORIES

Spare tyre provided: No

Toolkit present: Yes

Jack present: Yes



Assessment

- Vehicle Inspection Report -

Number: 10263824
From: 20.03.2026

» Devaluation Factors

Nr	Location	Damage type	Repair type	Repair cost	Net cost
1	Roof	Scratch(es)	Repair and paint (complete)	€ 726.00	€ 508.20
2	Bonnet	Dent(s) and scratch(es)	Repair and paint (complete)	€ 507.50	€ 355.25
3	Door RL	Scratch(es)	Repair and paint (complete)	€ 365.00	€ 255.50
4	Bumper R	Scratch(es)	Repair and paint (complete)	€ 360.50	€ 252.35
5	Internal boot lining R	Scratch(es)	Replace	€ 280.50	€ 280.50
6	Internal boot lining L	Scratch(es)	Replace	€ 272.50	€ 272.50
7	Preparationtime bodywork	Paint preparation	Execute	€ 270.75	€ 189.53
8	Boot lid covering R	Scratch(es)	Replace	€ 159.00	€ 159.00
9	Door FL	Scratch(es)	Smart repair	€ 120.00	€ 120.00
10	Outside rear-view mirror housing R	Scratch(es)	Smart repair	€ 120.00	€ 120.00
11	Bodywork	Lettering	Remove lettering	€ 40.00	€ 40.00
Total without VAT:				€ 3,221.75	€ 2,552.83

» Usage Damages

The vehicle shows signs of wear consistent with its age, mileage and purpose.

» Missing Parts

Nr	Location	Damage type	Repair type	Repair cost	Net cost
1	Ignition key	Missing	Replace	€ 250.00	€ 250.00
2	Spare wheel	Missing	Replace	€ 180.00	€ 180.00
Total without VAT:				€ 430.00	€ 430.00



Assessment

- Vehicle Inspection Report -

Number: 10263824
From: 20.03.2026

» Commercial devaluation

Known previous damages:	No
Previous damages detectable:	No
Repainting present:	No
Paint thickness measurement performed:	Yes - no abnormalities/deviations

PAINTHICKNESS MEASUREMENT RESULTS

The measured values were in the usual range.

At least 3 measurements were carried out per component.



Assessment

- Vehicle Inspection Report -

Number: 10263824
From: 20.03.2026

» Notes On The Assessment

Details of the assignment and the scope of the assessment:

The order was placed to prepare a condition report on the described vehicle.

The vehicle condition assessment was carried out in accordance with the order on the basis of the standards for vehicle assessments specified by the client. The expert makes the findings in the individual case on the basis of his own expertise and at his own expert discretion.

Vehicle identification:

WVWZZZ3CXRE034258

VIN checked and matches documentation

Vehicle condition:

Average general condition

Inspection condition:

Insufficient light conditions, Restricted

Lifting platform/lifting equipment used:

No

Testdrive carried out:

No

Engine test carried out:

Yes



Assessment

- Vehicle Inspection Report -

Number: 10263824
From: 20.03.2026

» Remarks

This copy was generated electronically. It is valid without an original signature.

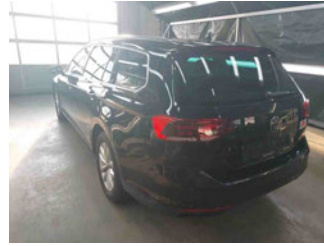
» Commercial Pictures



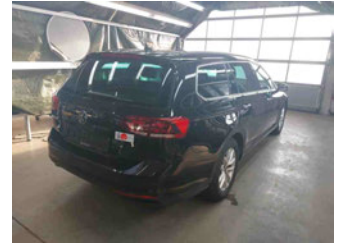
Front Left 3/4



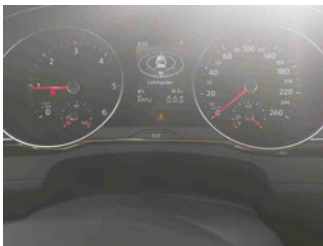
Front Right 3/4



Rear Left 3/4



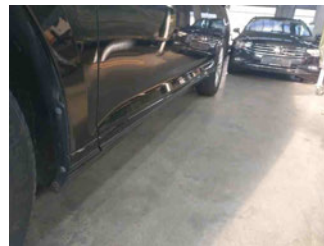
Rear Right 3/4



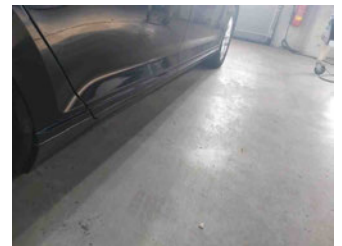
Mileage



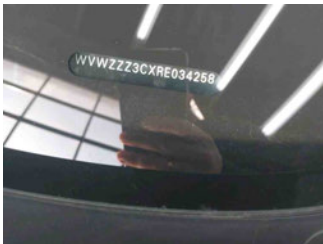
Tools



Sill outer L



Sill outer R



Chassis nr



Wheel FL



Wheel FR



Wheel RL



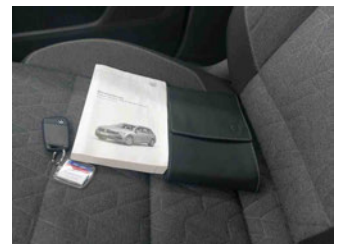
Wheel RR



Central console



Engine compartment



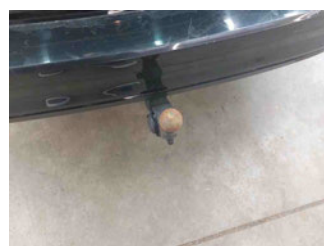
Documents



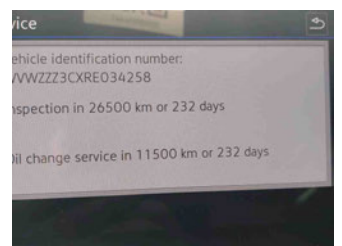
Interior arrangement



Maintenance



Towbar



History Maintenance

Assessment

- Vehicle Inspection Report -

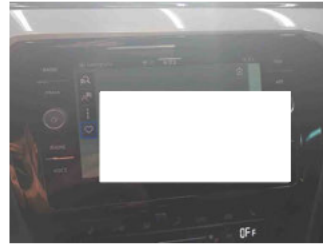
Number: 10263824
From: 20.03.2026



Interior - front



Interior - rear

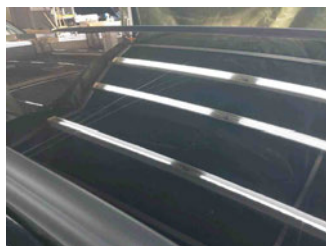
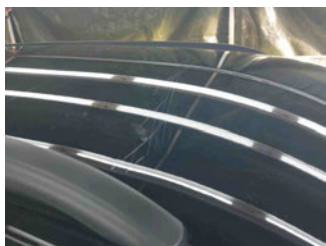


GPS/Radio

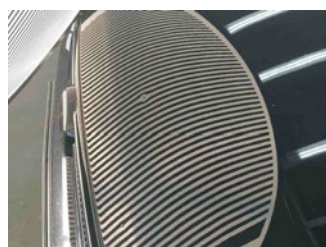
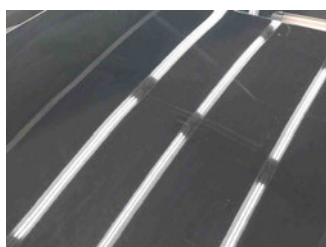
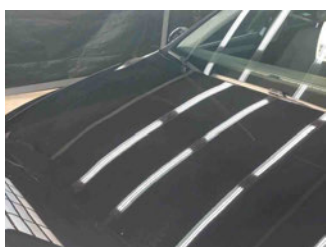
» Devaluation Damages

DEVALUATION FACTORS

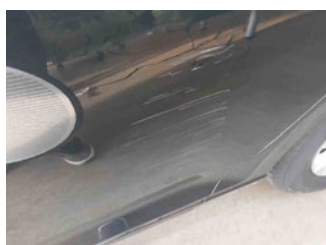
1 - Roof - Scratch(es) - Repair and paint (complete)		Repaircosts:	€ 726.00
		Net cost:	€ 508.20
Paint material			€ 210.00
Paint work	43 WU		€ 516.00



2 - Bonnet - Dent(s) and scratch(es) - Repair and paint (complete)		Repaircosts:	€ 507.50
		Net cost:	€ 355.25
Paint material			€ 147.50
Paint work	30 WU		€ 360.00



3 - Door RL - Scratch(es) - Repair and paint (complete)		Repaircosts:	€ 365.00
		Net cost:	€ 255.50
Paint material			€ 65.00
Paint work	25 WU		€ 300.00



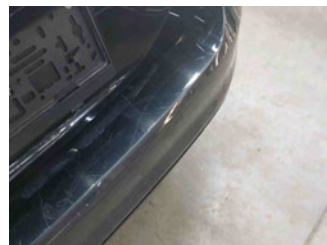
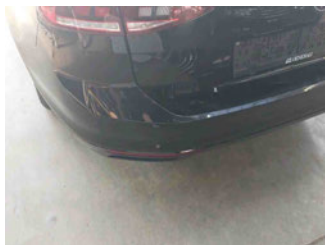


Assessment

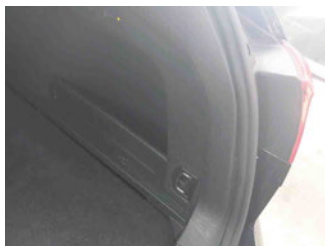
- Vehicle Inspection Report -

Number: 10263824
From: 20.03.2026

4 - Bumper R - Scratch(es) - Repair and paint (complete)		Repaircosts:	€ 360.50
		Net cost:	€ 252.35
Paint material			€ 72.50
Paint work	24 WU		€ 288.00



5 - Internal boot lining R - Scratch(es) - Replace		Repaircosts:	€ 280.50
		Net cost:	€ 280.50
Parts Price			€ 159.50
Body work	11 WU		€ 121.00



6 - Internal boot lining L - Scratch(es) - Replace		Repaircosts:	€ 272.50
		Net cost:	€ 272.50
Parts Price			€ 162.50
Body work	10 WU		€ 110.00



7 - Preparationtime bodywork - Paint preparation - Execute		Repaircosts:	€ 270.75
		Net cost:	€ 189.53
Fixed Price			€ 270.75



Assessment

- Vehicle Inspection Report -

Number: 10263824
From: 20.03.2026

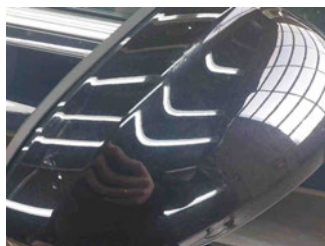
8 - Boot lid covering R - Scratch(es) - Replace		Repaircosts:	€ 159.00
		Net cost:	€ 159.00
Parts Price			€ 115.00
Body work	4 WU		€ 44.00



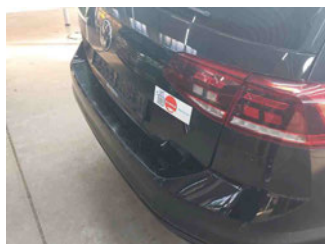
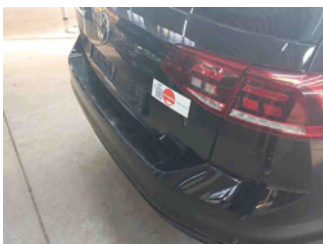
9 - Door FL - Scratch(es) - Smart repair		Repaircosts:	€ 120.00
		Net cost:	€ 120.00
Fixed Price			€ 120.00



10 - Outside rear-view mirror housing R - Scratch(es) - Smart repair		Repaircosts:	€ 120.00
		Net cost:	€ 120.00
Fixed Price			€ 120.00



11 - Bodywork - Lettering - Remove lettering		Repaircosts:	€ 40.00
		Net cost:	€ 40.00
Fixed Price			€ 40.00
Quantity	1		





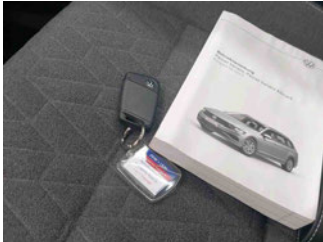
Assessment

- Vehicle Inspection Report -

Number: 10263824
From: 20.03.2026

MISSING PARTS

1 - Ignition key - Missing - Replace		Repaircosts:	€ 250.00
		Net cost:	€ 250.00
Parts Price			€ 250.00
Quantity	1		



2 - Spare wheel - Missing - Replace		Repaircosts:	€ 180.00
		Net cost:	€ 180.00
Parts Price			€ 180.00

