

## Expertise

Protocol number: 45523577  
Order No. / Reference: 26344005  
Inspection date: 20 May 2026

Manufacturer: Mercedes-Benz

Model: GLE 350 de 4Matic 9G-TRONIC AMG Line

VIN: W1N1671171A506329



### Vehicle details

#### Manufacturer / Type / Model / Equipment

Mercedes-Benz GLE 350 de 4Matic 9G-TRONIC AMG Line

<b>Vehicle Identification number</b>	W1N1671171A506329
<b>Mileage (Read)</b>	114,150 km
<b>First registration</b>	15 Sept 2021
<b>Number of holders</b>	1
<b>Next periodical technical inspection</b> (Report on hand)	09/2026

<b>Power / Engine displacement</b>	143 kw / 1,950 ccm
<b>Fuel type / Cylinder</b>	Hybr.D/E ext.aufll / 4
<b>Gearbox / Number of gears</b>	Automatic / 9
<b>Type of drive</b>	All-wheel drive
<b>Type of vehicle</b>	SUV

<b>Colour / colour code</b>	Mojavesilber Metallic
<b>Doors / Seats</b>	5 / 5
<b>Upholstery type</b>	Alcantara / Leather
<b>Colour of upholstery</b>	Black-Anthracite

<b>Vehicle with smoke odor</b>	no
--------------------------------	----



Vehicle details			
<b>Maintenance booklet / proof</b>	digital proof / complete	<b>Next maintenance in</b>	57 Tag(e)
<b>Last service on / at</b>	07/2025 at 94,151 km		
<b>Key is / should be</b>	2 / 2	<b>FZG documents</b>	ZB#2 (B) was available (copy), ZB#1 (S) was not available.
		<b>Letter No.</b>	GC630371
<b>Previous damage / Accident</b>	Detectable	<b>Repainting</b>	None detectable
<b>Inspection conditions</b>	sufficient	<b>Lifting equipment / pit</b>	No
<b>Test drive</b>	Not performed	<b>Engine function test</b>	Performed
<b>Manufacturer key number/ type code number</b>	2222 / AFH 00067		
<b>Emission standard</b>	EURO6;WLTP;AP;PI/CI; M, N1 I	<b>fine dust sticker</b>	
<b>Permitted total weight</b>	3,260 kg	<b>Empty weight</b>	

## Tyres

Mounted tyres				
#	Tyre size	Type of tyre	Manufacturer	Tread depth
1)	275/50 R20 113V	Winter tyres on Light alloy	Goodyear	4mm / 4mm
2)	275/50 R20 113V	Winter tyres on Light alloy	Goodyear	5mm / 5mm
Additional tyres				
#	Tyre size	Type of tyre	Manufacturer	Tread depth
1)	275/50 R20 113W	Summer tyres on Light alloy	Dunlop	4mm / 4mm
2)	275/50 R20 113W	Summer tyres on Light alloy	Dunlop	4mm / 4mm
Replacement				
Typ	Tyre size	Type of tyre	Manufacturer	Tread depth
	Tirefit	Expiration date 02/2026		

**Legend: Tread depth information for the left tire is listed first, for the right tire it is listed second on the axle in the direction of travel.**

TÜV SÜD Auto Partner GmbH  
Wiesenring 2  
04159 Leipzig

Inspection location  
Mosolf SE & Co.KG  
Faberweg 25  
73230 Kirchheim unter Teck



## Equipment



## Standard equipment

- 3-point safety belts (including mechanical belt height adjustment and belt force limiter for driver and front passenger as well as automatic belt height adjustment in the rear outer seats)
- Acoustic environmental protection (To ensure that your vehicle does not become a danger to pedestrians and cyclists even when driving purely electrically and almost silently, the acoustic environmental protection generates a Mercedes-Benz specific sound outside the vehicle up to a speed of 30 km/h.)
- Active Brake Assist
- Adaptive brake light (flashing)
- Adaptive Highbeam Assist
- Airbag: Kneebag for driver
- Airbag: Windowbags
- AMG floor mats in black velour with "AMG" lettering
- AMG sports pedal assembly made of brushed stainless steel with black rubber studs
- Anti-lock braking system
- Automatic passenger airbag deactivation
- Brake Assist BAS (with brake force support during detected emergency braking)
- Charging system: AC on-board charger 7.4 kW
- Chassis with steel springs and lowered suspension (steel springs with passive damping system)
- Communication module (LTE) for using Mercedes me connect services (The communication module (LTE) offers you a clear increase in comfort and safety. It constantly connects the vehicle to the internet – so that you can use helpful services such as the Live Traffic Information from Mercedes me connect. Two mobile antennas and an LTE-enabled SIM card ensure a fast connection.)
- Downhill Speed Regulation (DSR) (Speed setting between 2 and 18 km/h via the cruise control - switch for turning it on and off in the center console - display in the multimedia display)
- EASY-Pack cargo cover (removable)
- Electrically adjustable and heated exterior mirrors
- Foldable armrest for driver and front passenger (with storage compartment)
- Front door sills with "Mercedes-Benz" lettering illuminated in white
- Headrests adjustable in 5 positions (height and tilt)
- Interior headliner fabric crystal grey
- LED High Performance Headlights (Signal light with trifunctional torch for daytime running light, position light and turn indicator in LED light guide technology with thick-walled optics; high beam in LED reflection technology; low beam in LED projection technology; the elements of the rear lights in LED technology: all light functions in full LED technology; tail light; brake light and parking light; rear fog light (only on the left side); turn indicator in the white light strip; reversing light in the white light strip)
- Mechanical child safety locks in the rear doors (and electric locks for the rear window regulators)
- 4MATIC permanent all-wheel drive
- Active Lane Keeping Assist
- ADAPTIVE BRAKE (with HOLD function - including hill start assist and drying brakes in wet conditions)
- Airbag: Driver and passenger side
- Airbag: Sidebag for driver and front passenger (combined thorax/ pelvisbag)
- Ambient lighting (ambient lighting in 64 colors - all colors can be selected individually - brightness of the lighting zones can be selected from 0 to 100% frei - nine color schemes with different color combinations - Dynamic mode: atmospheric color change through slow, continuous transition between different colors - Climate effect: color feedback when the temperature setting is changed - Welcome effect: special lighting when entering the vehicle)
- ATTENTION ASSIST (can detect typical signs of fatigue through driver behavior and warn the driver of increasing fatigue or inattentiveness)
- Central locking with interior switch (including automatic locking (can be deactivated) and crash sensor with emergency opening)
- Charging cable for household socket, 5m, smooth (This charging cable, also called Mode 2 cable, allows you to charge the vehicle battery at the household socket with up to 2.3 kW (230 V, 1-phase, 10 A) and fits sockets of type E/F CEE 7/7.)
- Climate: THERMATIC automatic climate control (2-zone automatic climate control: allows individually adjustable temperature for driver and front passenger - climate settings controlled via the instrument panel controls or the touchscreen - sensor system for detecting, for example, interior/exterior temperature, sunlight, humidity and dew point - combination activated carbon filter for filtering dust, soot and pollen - windshield fogging sensor - recirculation mode activated by pressing the button for 2 seconds (with sunroof closing))
- Cruise control with variable speed limiter
- Diesel particulate filter
- EASY-Pack tailgate with electric operation for opening and closing
- ECO start/stop function
- electric parking brake
- Electric windows, front and rear
- Electronic Stability Program (ESP)
- Electronic traction system for all-wheel drive (4ETS)
- Exhaust system with 2 chrome-plated tailpipe trims
- Heat-insulating glass, all around
- Heated rear window (with timer)
- High-visibility vest for drivers
- Immobiliser
- KEYLESS-GO start function
- Lockable, air-conditioned and illuminated glove compartment
- Mercedes-Benz emergency call system



- Navigation accessories: Extended MBUX functions (personalization (profiles) and prediction functions - LINGUATRONIC with natural language understanding - activation via "Hey Mercedes" - Wi-Fi hotspot - internet radio)
- Navigation: Hard drive navigation (Mercedes-Benz look and feel of the navigation system, all map data stored on the hard drive - fast hard drive navigation - destination input via touch function or voice control - route calculation including waypoints - numerous route options and avoidance options - 3D image of the upcoming driving maneuver and lane recommendation - easy switching between 2D and 3D views - compass - route recording function (prerequisite: a USB device is connected to the multimedia system))
- Package: Mirror package (both exterior mirrors electrically folding (button in the driver's door control panel) - automatic lowering of the passenger-side mirror glass to the parking position when reverse gear is engaged - interior mirror and driver's side exterior mirror automatically dimming - ambient lighting in both exterior mirrors: with projection of the brand logo to illuminate the entry area)
- Phone accessories: Smartphone integration (Android Auto and Apple CarPlay). Smartphone integration merges the mobile phone with the media system via Apple CarPlay and Android Auto.
- Power steering
- Radiator grille with 2 chrome-plated louvers in SUV design
- Rear view camera
- Seats: Rear seat backrests foldable (40/20/40 split ratio)
- Speed Limit Assistant (camera behind the windshield - uses image recognition to determine the maximum permissible speed of the currently driven route based on the corresponding signage - if there are no signs, additional information such as the lane width can be used to determine the maximum permissible speed - display of speed limits including restrictive additional signs in the instrument cluster and in the optionally available display)
- Steering column mechanically adjustable lengthwise and heightwise.
- Tire pressure monitoring system (TPMS)
- Widescreen Cockpit (instrument display and media display as an optical unit under a continuous cover glass - display cluster consisting of two fully digital color displays in flatscreen look with a screen diagonal of 12.3 inches each and a resolution of 1920 x 720 pixels - touchscreen version for the media display - display styles: "Classic", "Sport", "Progressive" and "Discreet")
- Windscreen wipers with rain sensor
- Navigation accessories: Pre-installation for navigation services (Wherever you go, you're always well-informed. Your vehicle answers your questions about your journey and you can find out current fuel prices at your destination, the number of available parking spaces, or the current weather. This makes trip planning even easier.)
- Package: Chrome (window line trim strip, front and rear underride protection, chrome-plated beltline trim strip)
- Package: Chrome Interior Package (controls and trim strip in the door interior in silver chrome - controls to the left of the steering wheel in silver chrome - touchpad, hand rest, control switches and cupholder of the center console in silver chrome - climate control strip in silver chrome)
- Package: Parking package with reversing camera (Active Parking Assist with PARKTRONIC)
- PRE-SAFE system (with reversible belt tensioners for driver and front passenger seats and closing function for side windows)
- Radio accessories: Additional USB ports
- Radio accessories: Digital radio (DAB)
- Rear armrest (foldable)
- Rear window wiper with intermittent function (and automatic activation when reversing)
- Remote Services Plus (The Remote Services Plus package transforms mobility into a new experience, offering greater comfort and safety. Status queries provide information about the remaining range. You can remotely control certain functions and locate your vehicle. Services such as maintenance management coordinate service appointments, saving you valuable time.)
- Roof rails in aluminum look
- Seats: Heated seats for driver and front passenger seats
- Seats: Sports seats for driver and front passenger with specific seat graphics (fully electric seat adjustment)
- Steering wheel: Multifunction sports steering wheel in Nappa leather (The multifunction sports steering wheel in Nappa leather with chrome controls is flattened at the bottom and perforated in the grip area – an excellent feature for sporty driving. You will not only see this, but feel it immediately when you touch the steering wheel. The high-quality, soft Nappa leather is also a premium experience in itself.)
- Tachometer
- Third brake light
- Traction control (ASR)
- Transmission: 9G-TRONIC (9-speed automatic transmission - DIRECT SELECT selector lever - DIRECT SELECT steering wheel shift paddles - DYNAMIC Select)
- Upholstery: ARTICO man-made leather/DINAMICA microfiber (incl. 4-way lumbar support for driver)



## Extra equipment

- Black fabric headliner
- Charging cable for industrial socket, 5m, smooth (This charging cable, also called Mode 2 cable, allows you to charge the vehicle battery at the industrial socket with up to 3.6 kW (230 V, 1-phase, 16 A) and fits sockets of type IEC60309 CEE 16/3.)
- Charging system: DC on-board charger (DC charging)
- Chrome-look loading sill protector
- Heated windshield washer system (including washer fluid reservoir, washer nozzles and washer fluid hoses)
- Navigation accessories: MBUX Augmented Reality for Navigation (To help you find your way in complex traffic situations, MBUX Augmented Reality for Navigation connects the virtual world with the real one. The technology overlays graphical navigation and traffic information onto live images. You reach your destination quickly, safely and stress-free.)
- Package: Driving Assistance Package (Active Distance Assist DISTRONIC - Active Steering Assist - Active Brake Assist - Evasive Steering Assist - Active Lane Keeping Assist - Active Blind Spot Assist - PRE-SAFE PLUS)
- Package: Memory Package (driver and front passenger seat, steering column and exterior mirrors electrically adjustable and storable - seat longitudinal position and headrest height additionally electrically adjustable - 4-way lumbar support for driver and front passenger - seat cushion depth adjustment with gapless cushion - PRE-SAFE positioning function for the front passenger seat - front passenger seat operation for driver)
- Package: Public Charging (Includes charging cable for wallbox and public charging stations, 5m, smooth and Remote and Charging Services Plus)
- Radio accessories: Burmester surround sound system (with 13 speakers and 590 watts system power. Experience enhanced performance and exclusivity with legendary Burmester sound. The high-performance speakers create a first-class surround sound experience. This can be specifically optimized for the front and rear seats, intensifying the listening experience. A quality that is also visible thanks to the high-quality Burmester logos.)
- Seats: Heated rear seats
- Telephone: Multifunctional telephony (wireless connection of mobile phone with external antenna - wireless charging for compatible mobile phones - Bluetooth and WLAN pairing wirelessly via NFC (Near Field Communication) technology)
- URBAN GUARD Vehicle Protection (The URBAN GUARD Vehicle Protection package offers comprehensive monitoring. It includes an anti-theft alarm system and tow-away protection that can detect changes in position. Movements inside the vehicle also trigger visual and audible warnings. The Mercedes me theft and parking collision detection system informs you via the app.)
- Airbag: Sidebags in the rear, left and right
- Cargo area cover (with additional partition net).
- Charging cable for wallbox and public charging stations, 5m, smooth (This charging cable, also called Mode 3 cable, allows you to charge the vehicle battery at the wallbox or at public charging stations with up to 11 kW (Type 2, 3-phase, 20 A).)
- Decorative elements: designo wood ash, figured black, open-pore
- Heat-insulating dark tinted glass
- MULTIBEAM LED (84 individually controllable high-performance LEDs per headlight - low beam and high beam in LED projection technology - Adaptive Highbeam Assist Plus - ULTRA RANGE high beam with a range of 650 m (maximum legally permissible beam range) - cornering light or cornering light with roundabout and intersection function - active curve illumination - extended fog light, city light, country road light, motorway light and bad weather light - off-road light - adaptive full-LED taillights)
- Package: KEYLESS-GO Comfort Package (vehicle key with KEYLESS-GO functionality - KEYLESS-GO access and drive authorization system - start/stop button - comfort opening and closing - door handles with chrome inlay - HANDS-FREE ACCESS - handle recess lighting - remote trunk lid closing - EASY-PACK luggage compartment lid)
- Package: Parking Package with 360° camera (12 sensors: four front, four rear, two on the sides in the front/rear bumper; detects parking spaces up to 35 km/h; steering control; in conjunction with automatic transmission, assists with acceleration, braking, and gear changes; 360° camera; visual/audible warning of detected obstacles in front of/ behind the vehicle up to approx. 10 km/h; Rear Cross Traffic Alert warns of detected cross traffic; Drive Away Assist (only in conjunction with automatic transmission); button on the center console or on the control panel for the assistance systems)
- Paint finish: Metallic
- Protection and preservation (The reversible mat helps in two ways: With its fine velour side, it effectively protects the cargo area from dirt, while its rubberized side prevents cargo from slipping. The foldable zigzag loading sill protector with Velcro fastening can prevent clothing from getting dirty or the paintwork from being scratched during loading and unloading.)
- TIREFIT with tire inflation compressor
- Towbar with ESP trailer stabilization
- Wheels: 50.8 cm (20") light alloy wheels in 5-spoke design (aerodynamically optimized, painted black and polished with front axle 275/50 R 20 on 8.5 J x 20 ET 55, rear axle 275/50 R 20 on 8.5 J x 20 ET 42)



## Brief expert findings

Documents submitted	At the time of the inspection, the vehicle registration certificate Part 2 (title) was available, but the vehicle registration certificate Part 1 (document) was not. (Copy)
VIN comparison	The vehicle identification number (VIN) was read from the vehicle and its conformity with the submitted documents was confirmed by the undersigned during the inspection.
Inspection	The inspection conditions were sufficient for the assessment of the vehicle. No lifting equipment or pit was available for inspecting the vehicle. Therefore, inspection of the vehicle's underside was only possible to a limited extent.
Test drive	No test drive/shunting maneuver was carried out during the inspection of the vehicle.
Engine function test	An engine test run was performed.

## Value reducing factors

No.	Component group	Description
1	Equipment	Tirefit filler - Expired - Replace
2	Door - rear left side	Door - Scratch(es) - Smart repair
3	Body	Identification plate - Scratch(es) - Replace

## Wear and tear

No.	Component group	Description
1	Wheel / tyres	Tyre - front - Does not meet the leasing specifications - No deduction
2	Bonnet	Bonnet - Stone chips - No deduction
3	Vehicle glazing	Windscreen - Stone chips - No deduction
4	Body	Body - Scratch(es) - No deduction

The vehicle shows signs of wear and tear commensurate with its age and use.

## Missing parts

### Description

Documents - Service book (Digitaler Ausdruck)

## Previous damages

No.	Previous damage	Extent of damage (Net)
1	Side - left, Provided by user / customer, from 10 Mar 2023	4.710,98 €

## Paint coat thickness measurement

Door - rear left side	120 µm
-----------------------	--------

## Order/Scope of Order

An order was placed to prepare a sales report for the described vehicle. This report includes the following:

- Description of key vehicle information
- Documentation of equipment features  
*(Delivery by third-party service providers)*
- Documentation of damage, defects, missing parts
- Documentation of prior damage, unrepaired prior damage, repainting
- A brief visual or functional inspection of the equipment details, if possible.  
*(Functional testing of driver assistance systems is not included in the scope of services!)*
- a photographic documentation of the vehicle



## Basis for the order

This product is based on the guidelines for vehicle returns and valuations published by Alphabet Fleet GmbH. The expert makes the specific findings in each individual case objectively, within the framework of the prescribed standards, based on their own expertise.

The vehicle inspection takes place in a fully assembled, unassembled state.

Damage or defects that can only be detected during disassembly/diagnostic work or through further investigation remain within the realm of prognostic risk. An increased risk exists due to concealed defects caused by fraudulent misrepresentation and which were not identifiable by the expert.

Damage or defects resulting from normal use or wear and tear of the vehicle will be accepted in accordance with the applicable standard.

There was no explicit identification or monetary consideration of the expected features within the product.

Features which, in their nature and extent, slightly exceed normal use but do not constitute unacceptable damage, will be documented and indicated as signs of wear, if applicable.

Damage or defects that, according to the applicable standard, can no longer be attributed to normal use or wear and tear are listed under "Value Reducing Factors" in the product description.

Depending on the product specification, a monetary ID can be provided. If this takes place, the costs can be 100% d or pro rata depending on the vehicle's age and mileage.

## Previous damages

According to available information previous damages were repaired at the vehicle. Traces of repairs, which allow conclusions about the area of repair, were not recognizable during the inspection.

## Comments

-Das Fahrzeug kann nicht ordnungsgemäß angehoben werden.

-Keine Besichtigung des Unterbodens, Begutachtung Fahrwerk/Achsen/Aggregate bedingt möglich, Zusatzkosten können entstehen.

-Der montierte Winterradsatz ist kein Bestandteil des Auslieferungsumfangs.



Figure 1: Diagonal front (left)



Figure 2: Diagonal front (right)



Figure 3: Diagonal rear (left)



Figure 4: Diagonal rear (right)



Figure 5: Interior - front



Figure 6: Interior - rear



Figure 7: Instrument cluster



Figure 8: Instrument panel



Figure 9: Interior 360° view

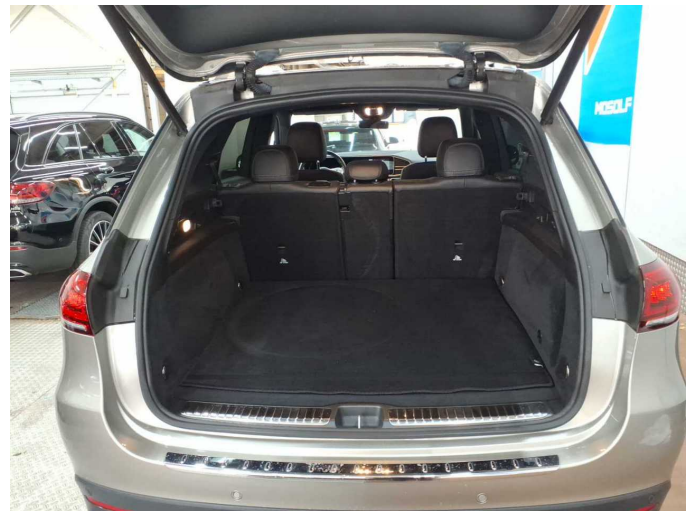


Figure 10: Cargo area



Figure 11: VIN



Figure 12: Mounted tyres



Figure 13: Documents



Figure 14: Documents

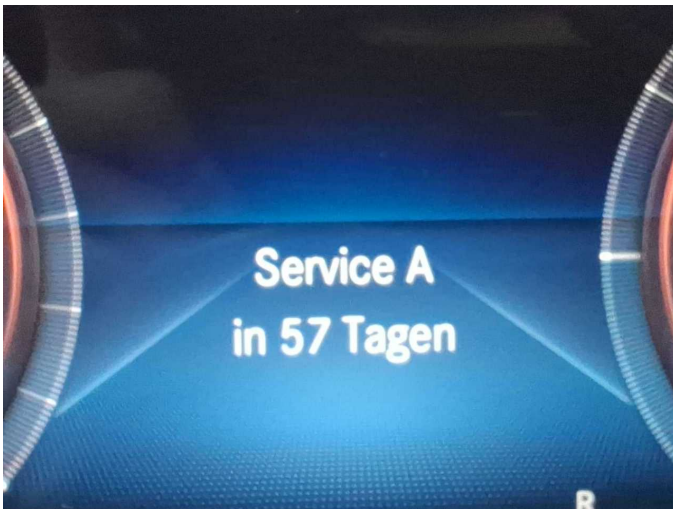


Figure 15: Documents



Figure 16: Additional tyres



Figure 17: Navigation



Figure 18: Misc.



Figure 19: Misc.



Figure 20: Misc.



Figure 21: Misc.



Figure 22: Misc.



Figure 23: Misc.

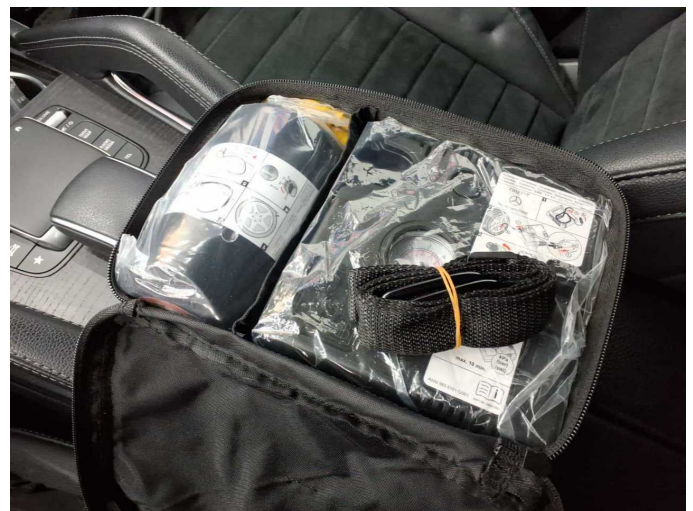


Figure 24: Misc.



Figure 25: Misc.



Figure 26: Misc.



Figure 27: Misc.



Figure 28: Misc.

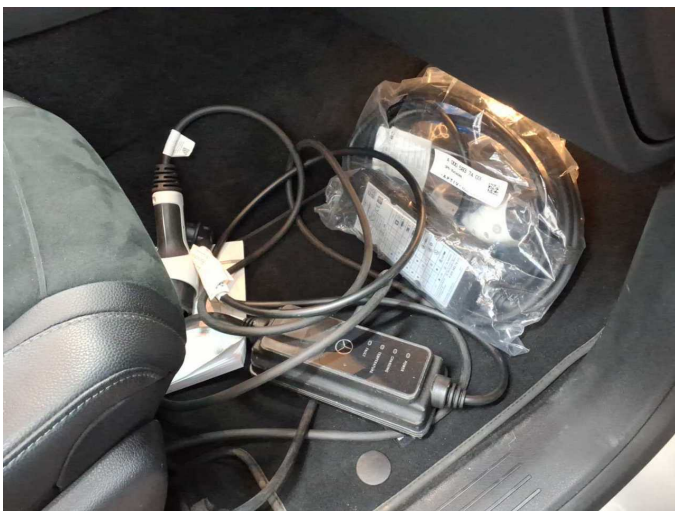


Figure 29: Misc.

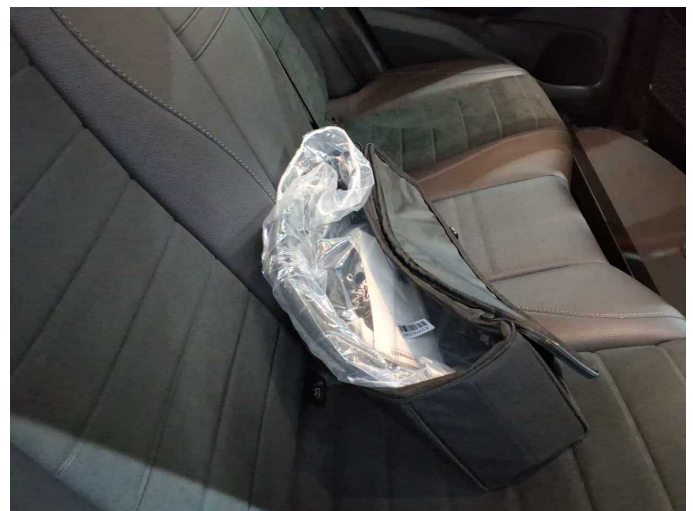


Figure 30: Misc.



Figure 31: Misc.



Figure 32: Misc.



Figure 33: Misc.



Figure 34: Misc.

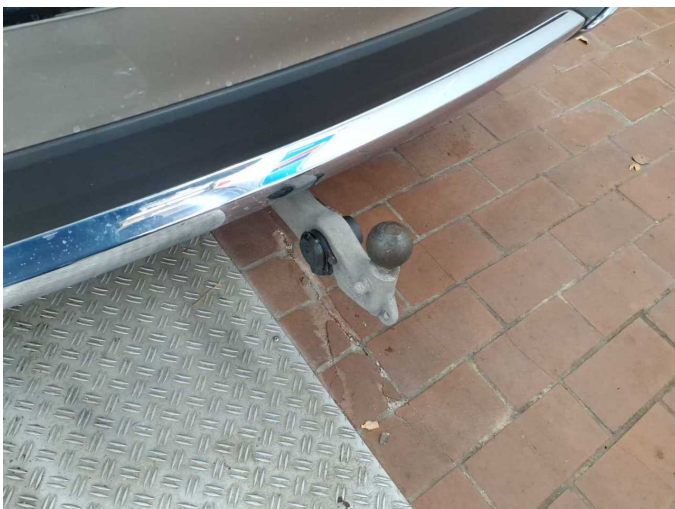


Figure 35: Misc.



Figure 36: Misc.





# Wartungshistorie

(gemäß Auftraggeber Informationen)

Fahrgestellnummer: W1N1671171A506329

Hersteller / Modell: MERCEDES-BENZ MB GLE 350 de 4Matic 9G-TRONIC AMG Line

Datum	KM-Stand	Beschreibung
21.01.2026	109.919	Bremse Sonstiges; Bremsflüssigkeit ern; Ladeluftschlauch ern; Reparatur Sonstiges; Systemtest/Eigendiagnose; Turbolader ern
18.12.2025	108.317	Reparatur Sonstiges; Systemtest/Eigendiagnose
08.07.2025	94.151	Regelwartungsdienst
05.09.2024	69.699	AU
23.08.2024	69.041	Systemtest/Eigendiagnose
01.08.2024	68.111	Regelwartungsdienst
13.03.2024	58.039	Systemtest/Eigendiagnose
17.10.2023	48.856	Systemtest/Eigendiagnose
13.10.2023	46.237	Systemtest/Eigendiagnose
01.08.2023	43.882	Regelwartungsdienst
09.08.2022	20.020	Regelwartungsdienst