

## Expertise

Protocol number: 45446279  
Order No. / Reference: 26332788  
Inspection date: 4 May 2026

Manufacturer: Peugeot

Model: 5008 BlueHDi 180 EAT8 GT Pack

VIN: VF3MJEHZUNS184050



### Vehicle details

#### Manufacturer / Type / Model / Equipment

Peugeot 5008 BlueHDi 180 EAT8 GT Pack

**Vehicle Identification number** VF3MJEHZUNS184050

**Mileage (Read)** 152,312 km

**First registration** 17 Mar 2023

**Number of holders** 1

**Power / Engine displacement** 130 kw / 1,997 ccm

**Fuel type / Cylinder** Diesel / 4

**Gearbox / Number of gears** Automatic / 8

**Type of drive** Front drive

**Type of vehicle** Station wagon

**Colour / colour code** Perlmutter Weiß

**Doors / Seats** 5 / 7

**Upholstery type** Cloth

**Colour of upholstery** Black-Anthracite

**Vehicle with smoke odor** no



Vehicle details			
<b>Maintenance booklet / proof</b>	digital proof / complete	<b>Next maintenance in</b>	2,000 km
<b>Last service on / at</b>	09/2025 at 124,375 km		
<b>Key is / should be</b>	2 / 2	<b>FZG documents</b>	ZB#2 (B) was available (copy), ZB#1 (S) was not available.
		<b>Letter No.</b>	GG053852
<b>Previous damage / Accident</b>	None detectable	<b>Repainting</b>	Detectable
<b>Inspection conditions</b>	sufficient	<b>Lifting equipment / pit</b>	yes
<b>Test drive</b>	short drive on the company premises	<b>Engine function test</b>	Performed
<b>Manufacturer key number/ type code number</b>	3003 / AZF 00092		
<b>Emission standard</b>	EURO6;WLTP;AP;PI/CI; M, N1 I	<b>fine dust sticker</b>	
<b>Permitted total weight</b>	2,280 kg	<b>Empty weight</b>	

## Tyres

Mounted tyres				
#	Tyre size	Type of tyre	Manufacturer	Tread depth
1)	225/55 R18 102V	Winter tyres on Light alloy	Continental	6mm / 6mm
2)	225/55 R18 102V	Winter tyres on Light alloy	Continental	8mm / 8mm
Additional tyres				
#	Tyre size	Type of tyre	Manufacturer	Tread depth
1)	205/55 R19 97V	Summer tyres on Light alloy	Michelin	4mm / 4mm
2)	205/55 R19 97V	Summer tyres on Light alloy	Continental	6mm / 6mm
Replacement				
Typ	Tyre size	Type of tyre	Manufacturer	Tread depth
	Tirefit	Expiration date 02/2027		

**Legend: Tread depth information for the left tire is listed first, for the right tire it is listed second on the axle in the direction of travel.**

TÜV SÜD Auto Partner GmbH  
Wiesenring 2  
04159 Leipzig

Inspection location  
ARS Altmann AG Niederlassung  
Wolnzach  
Feierabendmühle 2  
85283 Wolnzach



## Equipment



## Standard equipment

- ABS (Anti-lock Braking System)
- Airbag: Front and rear side airbags
- Active Blind Spot Assist
- Electrically folding exterior mirrors with LED approach lighting
- Exterior mirrors in Perla Nera Black
- Hill start assist
- Chrome trim strips on the lower part of the doors
- Chrome trim strips below the side windows
- Black headliner
- Ceiling light - LED at the front, in row 2 and in row 3, 2 LED reading lights at the front, in row 2 and in row 3
- Decorative trim on the dashboard and door panels in satin chrome
- EBV (Electronic Brakeforce Distribution)
- Front parking aid, acoustic and visual
- Driving mode selector (Sport - Normal - Eco)
- Misfueling protection
- High beam assist
- Follow-me-home function (automatic)
- Front bumper in chrome look
- Floor mats
- Transmission: 8-speed automatic transmission EAT8
- Seat belts: 3-point safety belts
- Heated rear window
- Interior mirror automatically dimming
- Keyless system
- Automatic climate control (2-zone), with activated carbon filter
- Paint finish: Copper Brown
- White LED ambient lighting in the front footwell
- LED taillights with 3D effect
- Steering wheel: Multifunction leather steering wheel
- Steering wheel: small multifunction steering wheel, flattened at the top and bottom
- Front center armrest, two-piece, with storage compartment, illuminated and climate-controlled
- Fog light
- Package: Easy Package
- Particulate filter: FAP diesel particulate filter
- Peugeot Connect Box
- Radio: RCC audio system
- Radio: FOCAL sound system
- Radio accessories: Digital radio reception DAB+
- Tire pressure monitoring system
- Wheels: Tire repair kit (compressor + tire sealant spray)
- Keyless start system
- Electric power steering
- Seats: 2 additional seats for the 3rd row
- Seats: Passenger seat height adjustable
- Seats: Driver's seat height adjustable
- Lane keeping assist with steering intervention
- Airbag for driver and front passenger
- Airbag: Curtain airbags front and rear
- Adaptive Cruise Control (ACC) with Stop & Go function including lane positioning assistant
- Electrically adjustable and heated exterior mirrors with integrated LED turn signals
- On-board computer
- Chrome trim strips above the side windows
- Black Diamond roof (roof in Perla Nera black)
- Aluminum roof rails
- Alcantara "Grevat" decorative inserts for door panels and dashboard
- Digital instrument cluster with high-resolution 12.3" screen, adjustable and customizable
- Rear parking aid, acoustic and visual
- ESP (Electronic Stability Program) with ASR (Anti-Slip Regulation)
- Electric windows front and rear
- electric parking brake
- Front collision warning
- Full LED headlights with automatic headlight range control
- Cruise control system with speed limiter
- Cup holder in the center console
- tailgate sensor-controlled
- rear window wiper
- Frameless interior mirror
- Child safety locks on the rear doors
- Front headrests (2)
- Rear headrests (3)
- Chrome-plated loading sill protector
- Blue LED lighting on the door panel
- LED daytime running lights and LED turn signals at the front
- light sensor
- makeup mirror
- Fatigue warning
- Navigation system: 3D navigation system NAC
- Emergency brake assist
- Package: Kids' Package (Allure Pack, GT, GT Pack)
- Aluminum pedals and stainless steel door sills
- Upholstery: Faux leather / Alcantara black with red decorative stitching
- Radio: Mirror Screen
- Rain sensor
- Wheels: 19" "San Francisco" alloy wheels, two-tone
- paddle shifters on the steering wheel
- Side windows in the second row and rear window are more heavily tinted.
- Seats: 3 separate individual seats in row 2
- Seats: Passenger seat foldable
- Seats: Heated front seats
- Socket (3) 12 Volt



- Power outlet: Dual USB port (Type A) in row 2
- Traffic sign recognition
- Immobiliser

- Stop&Start system
- Tie-down points in the trunk (4 pieces)
- Central locking system, activatable from inside via remote control

### Extra equipment

- Seats: Ergonomic comfort seats with AGR seal of approval (electrically adjustable driver's seat with memory function - heated front seats - massage function for driver and front passenger seats - extendable thigh support on driver and front passenger sides - electric lumbar support on driver and front passenger sides - electric seat tilt adjustment on the front passenger side - exterior mirrors with projection of the PEUGEOT lion onto the ground)
- Detachable towbar (with removable ball head without tools)
- Night Vision (night vision system with display of the road situation at night in the instrument cluster)
- Paint finish: Special paint finish "Pearl White"

## Brief expert findings

Documents submitted	At the time of the inspection, the vehicle registration certificate Part 2 (title) was available, but the vehicle registration certificate Part 1 (document) was not. (Copy)
VIN comparison	The vehicle identification number (VIN) was read from the vehicle and its conformity with the submitted documents was confirmed by the undersigned during the inspection.
Inspection	The inspection conditions were sufficient for the assessment of the vehicle. Lifting equipment and/or a pit were available for examining the vehicle.
Test drive	A short maneuvering and shunting exercise was carried out on the company premises.
Engine function test	An engine test run was performed.

## Value reducing factors

No.	Component group	Description
1	2nd wheel set	1 tyre - Broken / torn - Replace
2	2nd wheel set	2 alloy rims - Scratched - Replace
3	Front bumper	Front bumper - Scratch(es) - Paint
4	Bonnet	Bonnet - Dent / paintcoat damage - Repair and paint

## Wear and tear

No.	Component group	Description
1	Vehicle glazing	Windscreen - Stone chips - No deduction

The vehicle shows signs of wear and tear commensurate with its age and use.

## Repainting

No.	Repainting
1	Boot lid / rear door, Professionally carried out, Invoice of repair done Non-existent



## Order/Scope of Order

An order was placed to prepare a sales report for the described vehicle. This report includes the following:

- Description of key vehicle information
- Documentation of equipment features  
*(Delivery by third-party service providers)*
- Documentation of damage, defects, missing parts
- Documentation of prior damage, unrepaired prior damage, repainting
- A brief visual or functional inspection of the equipment details, if possible.  
*(Functional testing of driver assistance systems is not included in the scope of services!)*
- a photographic documentation of the vehicle

## Basis for the order

This product is based on the guidelines for vehicle returns and valuations published by Alphabet Fleet GmbH. The expert makes the specific findings in each individual case objectively, within the framework of the prescribed standards, based on their own expertise.

The vehicle inspection takes place in a fully assembled, unassembled state.

Damage or defects that can only be detected during disassembly/diagnostic work or through further investigation remain within the realm of prognostic risk. An increased risk exists due to concealed defects caused by fraudulent misrepresentation and which were not identifiable by the expert.

Damage or defects resulting from normal use or wear and tear of the vehicle will be accepted in accordance with the applicable standard.

There was no explicit identification or monetary consideration of the expected features within the product.

Features which, in their nature and extent, slightly exceed normal use but do not constitute unacceptable damage, will be documented and indicated as signs of wear, if applicable.

Damage or defects that, according to the applicable standard, can no longer be attributed to normal use or wear and tear are listed under "Value Reducing Factors" in the product description.

Depending on the product specification, a monetary ID can be provided. If this takes place, the costs can be 100% d or pro rata depending on the vehicle's age and mileage.

## Previous damages

No apparent prior damage that had been repaired could be found on the vehicle.

## Comments

Der montierte Winterradsatz ist kein Bestandteil der Auslieferungsumfangs.



Figure 1: Diagonal front (left)



Figure 2: Diagonal front (right)



Figure 3: Diagonal rear (left)



Figure 4: Diagonal rear (right)



Figure 5: Interior - front



Figure 6: Interior - rear



Figure 7: Instrument cluster



Figure 8: Instrument panel



Figure 9: Interior 360° view



Figure 10: Cargo area

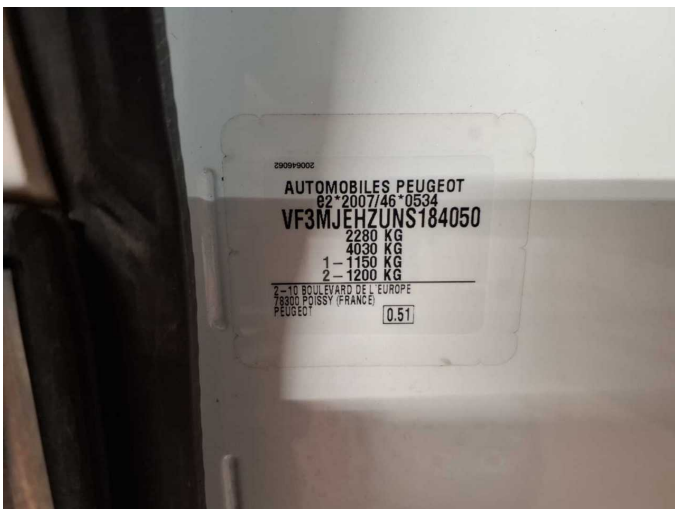


Figure 11: VIN



Figure 12: VIN



Figure 13: Mounted tyres



Figure 14: Documents



Figure 15: Documents



Figure 16: Documents



Figure 17: Additional tyres

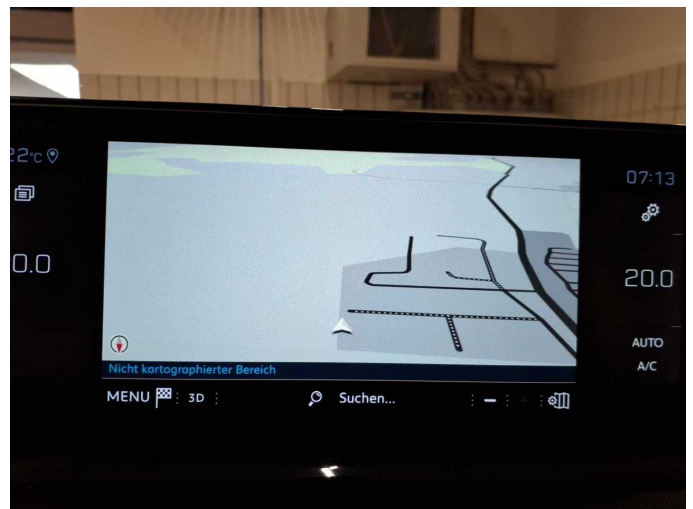


Figure 18: Navigation



Figure 19: Misc.



Figure 20: Misc.

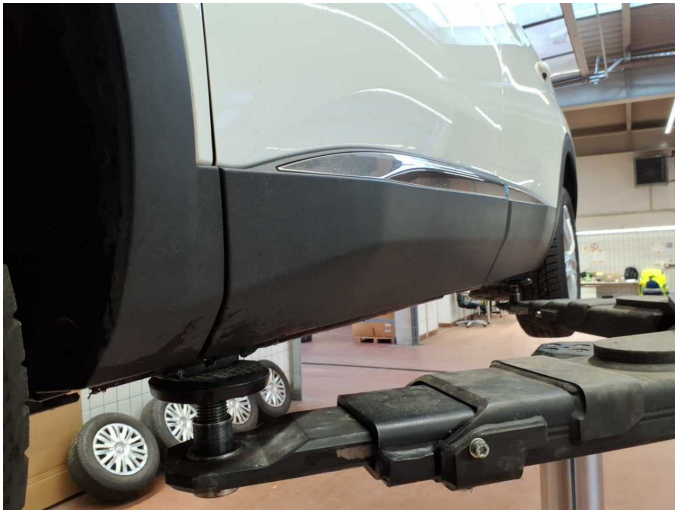


Figure 21: Misc.



Figure 22: Misc.



Figure 23: Misc.



Figure 24: Misc.



Figure 25: Misc.

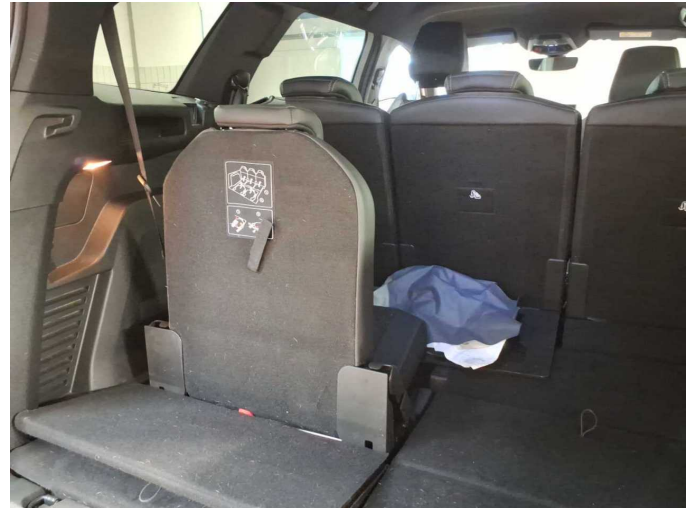


Figure 26: Misc.



Figure 27: Misc.



Figure 28: Misc.



Figure 29: Misc.



Figure 30: Misc.



Figure 31: Misc.



Figure 32: Misc.



Figure 33: Misc.



Figure 34: Misc.



Figure 35: Misc.



Figure 36: Misc.



**Damage 1:** 2nd wheel set: 1 tyre - Broken / torn - Replace



**Damage 1:** 2nd wheel set: 1 tyre - Broken / torn - Replace



**Damage 2:** 2nd wheel set: 2 alloy rims - Scratched - Replace



**Damage 2:** 2nd wheel set: 2 alloy rims - Scratched - Replace



**Damage 2:** 2nd wheel set: 2 alloy rims - Scratched - Replace



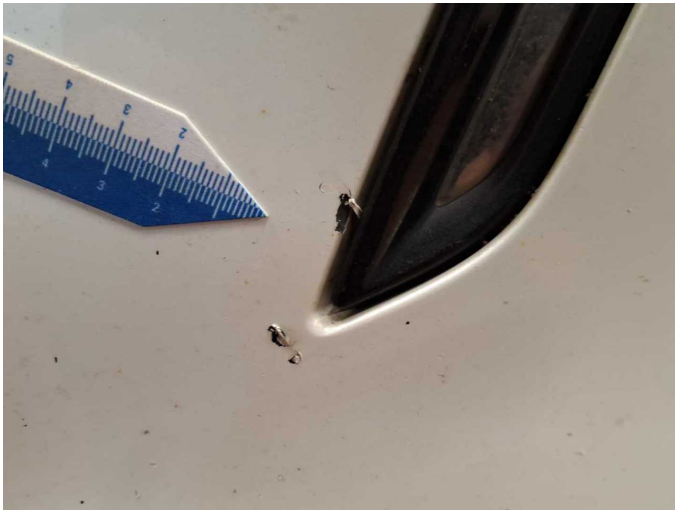
**Damage 2:** 2nd wheel set: 2 alloy rims - Scratched - Replace



**Damage 3:** Front bumper: Front bumper - Scratch(es) - Paint



**Damage 3:** Front bumper: Front bumper - Scratch(es) - Paint



**Damage 3:** Front bumper: Front bumper - Scratch(es) - Paint



**Damage 3:** Front bumper: Front bumper - Scratch(es) - Paint



**Damage 4:** Bonnet: Bonnet - Dent / paintcoat damage - Repair and paint



**Damage 4:** Bonnet: Bonnet - Dent / paintcoat damage - Repair and paint



**Damage 4:** Bonnet: Bonnet - Dent / paintcoat damage - Repair and paint



**Damage 4:** Bonnet: Bonnet - Dent / paintcoat damage - Repair and paint



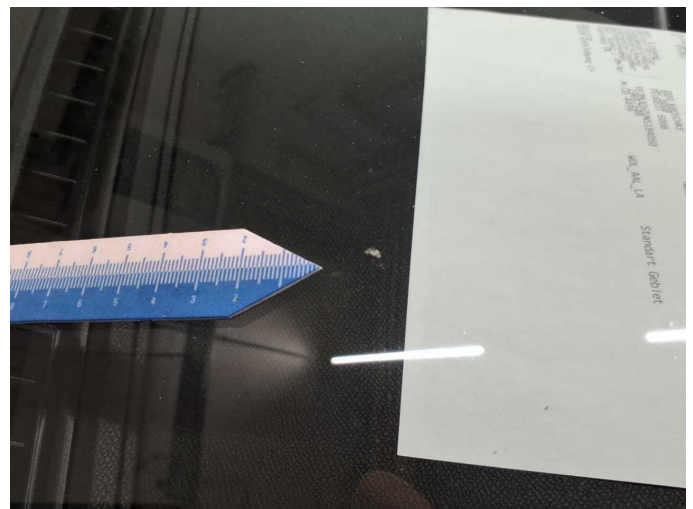
**Damage 4:** Bonnet: Bonnet - Dent / paintcoat damage - Repair and paint



**Wear and tear 1:** Vehicle glazing: Windscreen - Stone chips - No deduction



**Wear and tear 1:** Vehicle glazing: Windscreen - Stone chips - No deduction



**Wear and tear 1:** Vehicle glazing: Windscreen - Stone chips - No deduction



**Wear and tear 1:** Vehicle glazing: Windscreen - Stone chips - No deduction



# Wartungshistorie

(gemäß Auftraggeber Informationen)

Fahrgestellnummer: VF3MJEHZUNS184050  
Hersteller / Modell: PEUGEOT PEUGEOT 5008 BlueHDi 180 EAT8 GT Pack

Datum	KM-Stand	Beschreibung
27.02.2026	145.454	Systemtest/Eigendiagnose
03.09.2025	124.375	Bremsklötze vorne; Bremsscheiben vorne; Keilrippenriemen; Kraftstofffilter ern; Luftfiltereinsatz ern; Motoröl b. Wartung; Ölfilter ern; Regelwartungsdienst; Systemtest/Eigendiagnose; Wartung Sonstiges
03.06.2025	107.922	Ladeluftschlauch ern; Systemtest/Eigendiagnose
13.03.2025	93.916	Bremsklötze hinten; Bremsscheiben hinten; Motoröl b. Wartung; Ölfilter ern; Regelwartungsdienst; Systemtest/Eigendiagnose; Wartung Sonstiges
02.12.2024	80.893	Systemtest/Eigendiagnose
20.08.2024	62.801	Bremse Sonstiges; Bremsklötze vorne; Bremsscheiben vorne; Kraftstofffilter ern; Luftfiltereinsatz ern; Motoröl b. Wartung; Ölfilter ern; Regelwartungsdienst; Wartung Sonstiges
02.05.2024	47.626	Bremse Sonstiges; Bremsklötze hinten; Bremsscheiben hinten
10.11.2023	30.984	Motoröl b. Wartung; Ölfilter ern; Regelwartungsdienst; Wartung Sonstiges