

Expertise

Protocol number: 46012611
Order No. / Reference: 26495150
Inspection date: 18 Jun 2026

Manufacturer: Volkswagen

Model: Golf Variant 2.0 TDI SCR DSG R-Line

VIN: WVVZZZCD7RW807707



Vehicle details

Manufacturer / Type / Model / Equipment

Volkswagen Golf Variant 2.0 TDI SCR DSG R-Line

Vehicle Identification number WVVZZZCD7RW807707

Mileage (Read) 167,396 km

First registration 7 Nov 2023

Number of holders 1

Power / Engine displacement 110 kw / 1,968 ccm

Fuel type / Cylinder Diesel / 4

Gearbox / Number of gears Automatic / 7

Type of drive Front drive

Type of vehicle Station wagon

Colour / colour code Mondsteingrau

Doors / Seats 5 / 5

Upholstery type Cloth

Colour of upholstery Anthracite-Black



Vehicle details

Maintenance booklet / proof	digital proof / complete	Next maintenance in	2,600 km
Last service on / at	01/2026 at 147,469 km		
Key is / should be	2 / 2	FZG documents	ZB#2 (B) was available (copy), ZB#1 (S) was not available.
		Letter No.	GV401602
Previous damage / Accident	Detectable	Repainting	Detectable
Inspection conditions	sufficient	Lifting equipment / pit	yes
Test drive	Not performed	Engine function test	Performed
Manufacturer key number/ type code number	0603 / CNN 02098		
Emission standard	EURO6;WLTP;AP;PI/CI; M, N1 I	fine dust sticker	
Permitted total weight	2,060 kg	Empty weight	

Tyres

Mounted tyres

#	Tyre size	Type of tyre	Manufacturer	Tread depth
1)	225/40 R18 92Y	Summer tyres on Light alloy	Continental	5mm / 5mm
2)	225/40 R18 92Y	Summer tyres on Light alloy	Continental	5mm / 5mm

Additional tyres

#	Tyre size	Type of tyre	Manufacturer	Tread depth
1)	205/55 R16 91H	Winter tyres on Light alloy	Pirelli	5mm / 5mm
2)	205/55 R16 91H	Winter tyres on Light alloy	Pirelli	5mm / 5mm

Replacement

Typ	Tyre size	Type of tyre	Manufacturer	Tread depth
	Tirefit	Expiration date 06/2027		

Legend: Tread depth information for the left tire is listed first, for the right tire it is listed second on the axle in the direction of travel.



Equipment

Standard equipment

- Airbag for driver and front passenger
- 30-color ambient lighting
- App-Connect
- Exterior mirror housings and door handles in body color
- third brake light
- Car2X
- Decorative inlays "Carbon Grey"
- Digital Cockpit Pro, multicolor
- Electronic differential lock XDS
- Electronic stability program and electromechanical brake booster
- Driving profile selection
- Electric windows, front and rear
- Pedestrian protection measures expanded
- luggage compartment cover
- Transmission: 7-speed DSG
- Rear window wiper with intermittent function
- "Climatronic" air conditioning system
- Front headrests
- LED taillights
- Steering wheel: Multifunction sports steering wheel in leather, with touch controls and paddle shifters
- Non-smoking version
- Emergency call service
- Package: Seat Comfort Package
- Progressive steering
- Tire pressure monitoring system (passive)
- Rear bench seat undivided, backrest asymmetrically split and foldable with center armrest
- Seat belts: Three-point automatic seat belts for the outer rear seats
- Seat covers in "R-Line" fabric
- Seats: Lumbar support in the front
- Lane keeping assistant "Lane Assist"
- 12-volt power outlet in the luggage compartment
- Telephone interface with inductive charging function
- Ambient lighting with logo projection
- Green thermal insulation glazing, sides and rear
- Airbags: Front and rear head airbags, front side airbags, center airbag
- Electrically adjustable and heated exterior mirrors with memory function and passenger-side mirror lowering function.
- black roof rails
- Diesel particulate filter and SCR catalyst
- Parking assistance
- Electronic parking brake including auto-hold function
- Automatic headlight control, with LED daytime running lights
- Chassis: Sport chassis
- Windscreen made of laminated safety glass, heat and sound insulating
- Speed limiter
- Rear window heated
- ISOFIX mounting points
- Rear headrests (3)
- LED reading lights at the front (2) and 2 at the rear
- LED headlights
- Dynamic headlight range control
- Fatigue detection
- Emergency braking assistant "Front Assist" with pedestrian and cyclist detection
- Brushed stainless steel pedals
- Radio "Composition"
- Wheels: Tire Mobility Set
- Keyless start system without safe locking
- Seat belts: Three-point automatic seat belt for the middle rear seat
- Seat belts: Three-point automatic seat belts at the front with height adjustment and belt tensioner
- Seats: Top sports seats in the front
- Start-stop system
- Bumpers in body color
- Textile floor mats front and rear
- Electronic immobilizer
- Central locking without safe locking, with remote control and 2 remote folding keys



Extra equipment

- Paint finish: Special color Moonstone Grey
- Wheels: Alloy wheels (4) "Bergamo" 7.5 J x 18 (in black, polished surface - with individual installation - wheel locks with enhanced theft protection - tires 225/40 R 18)
- Rear side windows and rear window tinted
- Package: Business Premium incl. navigation system (R-Line DSG) (6+1 speakers, App-Connect incl. App-Connect Wireless for Apple CarPlay, Android Auto, automatic distance control, adaptive cruise control (ACC) stop/go, speed limiter, emergency brake, pedestrian detection, travel assist, lane assist, emergency assist, multifunction sports steering wheel with LED and heated steering wheel, paddle shifters, multifunction camera, Discover Media navigation incl. streaming & internet (MP3, touchscreen, USB), cargo net, radio, heated windshield washer system, voice control, telephone interface, comfort with inductive charging, textile floor mats, traffic sign recognition, heated front seats)

Brief expert findings

Documents submitted	At the time of the inspection, the vehicle registration certificate Part 2 (title) was available, but the vehicle registration certificate Part 1 (document) was not. (Copy)
VIN comparison	The vehicle identification number (VIN) was read from the vehicle and its conformity with the submitted documents was confirmed by the undersigned during the inspection.
Inspection	The inspection conditions were sufficient for the assessment of the vehicle. Lifting equipment and/or a pit were available for examining the vehicle.
Test drive	No test drive/shunting maneuver was carried out during the inspection of the vehicle.
Engine function test	An engine test run was performed.

Value reducing factors

No.	Component group	Description
1	Door - front left side	Door - Scratch(es) - Smart repair
2	Wheel / tyres	Alloy rim - front right side - Scratched - Loss in value
3	Front bumper	Parking sensors - left side - Damaged - Replace
4	Mudguard - right side	Mudguard - right side - Deformed - Repair and paint
5	Rear bumper	Rear bumper - Scratch(es) - Paint
6	Front bumper	Front bumper - Scratched - Paint
7	Boot lid / rear door	Boot lid - Deformed - Repair and paint
8	Bonnet	Bonnet - Dent / paintcoat damage - Repair and paint

Wear and tear

No.	Component group	Description
1	Vehicle glazing	Windscreen - Stone chips - No deduction

The vehicle shows signs of wear and tear commensurate with its age and use.

Missing parts

Description

Documents - Service book (Digitaler Ausdruck)

Previous damages

No.	Previous damage	Extent of damage (Net)
1	Side right, Provided by user / customer, from 2 Sept 2024	2.393,88 €



Repainting

No. Repainting

1 Side panel - rear right side, Door - rear right side, Professionally carried out, Invoice of repair done Non-existent

Paint coat thickness measurement

Side panel - rear right side	718 µm	Door - rear right side	186 µm
------------------------------	--------	------------------------	--------

Order/Scope of Order

An order was placed to prepare a sales report for the described vehicle. This report includes the following:

- Description of key vehicle information
- Documentation of equipment features
(*Delivery by third-party service providers*)
- Documentation of damage, defects, missing parts
- Documentation of prior damage, unrepaired prior damage, repainting
- A brief visual or functional inspection of the equipment details, if possible.
(*Functional testing of driver assistance systems is not included in the scope of services!*)
- a photographic documentation of the vehicle

Basis for the order

This product is based on the guidelines for vehicle returns and valuations published by Alphabet Fleet GmbH. The expert makes the specific findings in each individual case objectively, within the framework of the prescribed standards, based on their own expertise.

The vehicle inspection takes place in a fully assembled, unassembled state.

Damage or defects that can only be detected during disassembly/diagnostic work or through further investigation remain within the realm of prognostic risk. An increased risk exists due to concealed defects caused by fraudulent misrepresentation and which were not identifiable by the expert.

Damage or defects resulting from normal use or wear and tear of the vehicle will be accepted in accordance with the applicable standard.

There was no explicit identification or monetary consideration of the expected features within the product.

Features which, in their nature and extent, slightly exceed normal use but do not constitute unacceptable damage, will be documented and indicated as signs of wear, if applicable.

Damage or defects that, according to the applicable standard, can no longer be attributed to normal use or wear and tear are listed under "Value Reducing Factors" in the product description.

Depending on the product specification, a monetary ID can be provided. If this takes place, the costs can be 100% d or pro rata depending on the vehicle's age and mileage.

Previous damages

According to available information previous damages were repaired at the vehicle. Traces of repairs, which allow conclusions about the area of repair, were not recognizable during the inspection.

Comments

- Der beiliegende Winterradsatz ist kein Bestandteil des Auslieferungsumfangs.



Figure 1: Diagonal front (left)



Figure 2: Diagonal front (right)



Figure 3: Diagonal rear (left)



Figure 4: Diagonal rear (right)

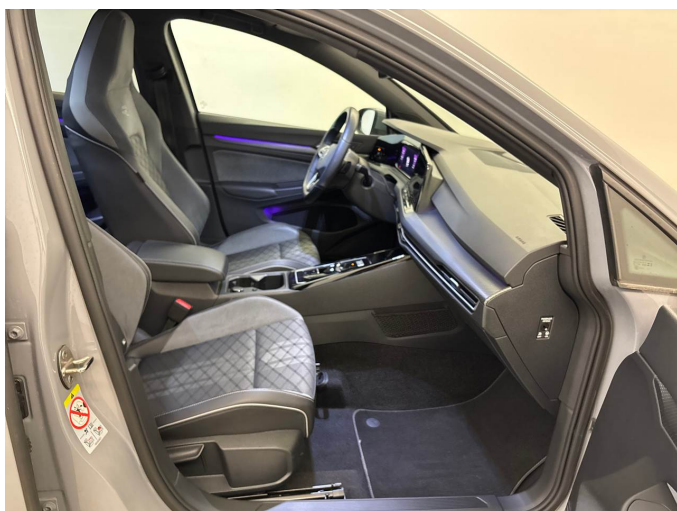


Figure 5: Interior - front

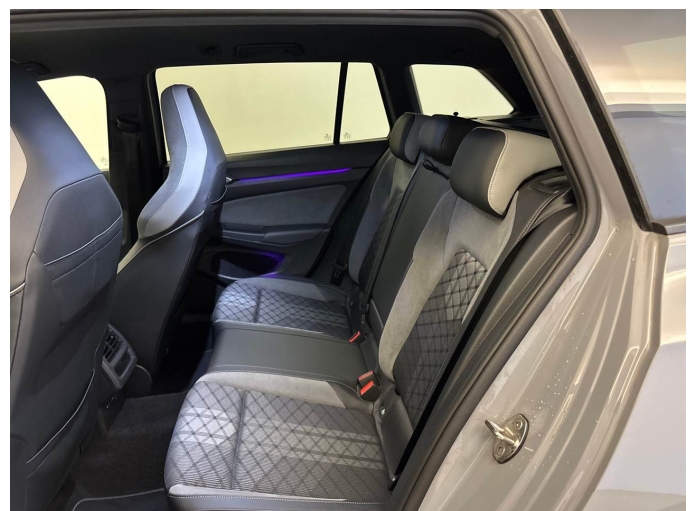


Figure 6: Interior - rear



Figure 7: Instrument cluster



Figure 8: Instrument panel



Figure 9: Interior 360° view



Figure 10: Cargo area



Figure 11: VIN



Figure 12: Mounted tyres



Figure 13: Documents



Figure 14: Additional tyres



Figure 15: Navigation



Figure 16: Misc.



Figure 17: Misc.



Figure 18: Misc.

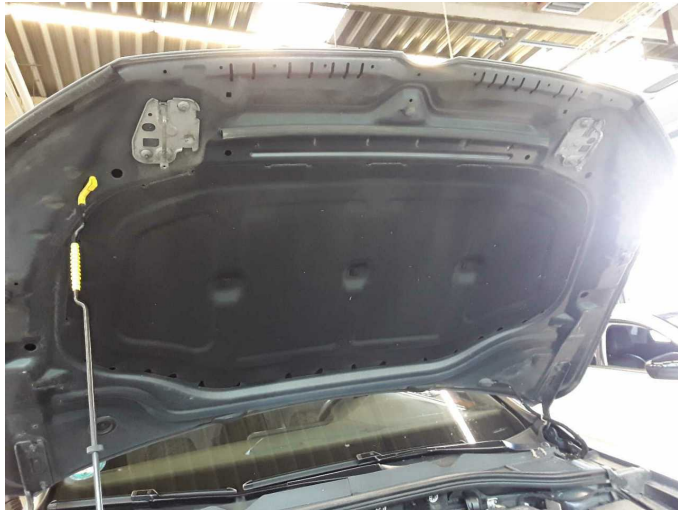


Figure 19: Misc.



Figure 20: Misc.



Figure 21: Misc.



Figure 22: Misc.



Figure 23: Misc.

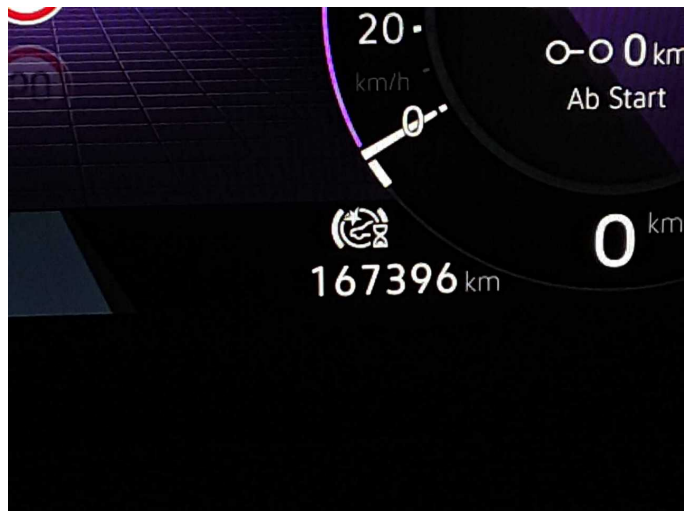


Figure 24: Misc.

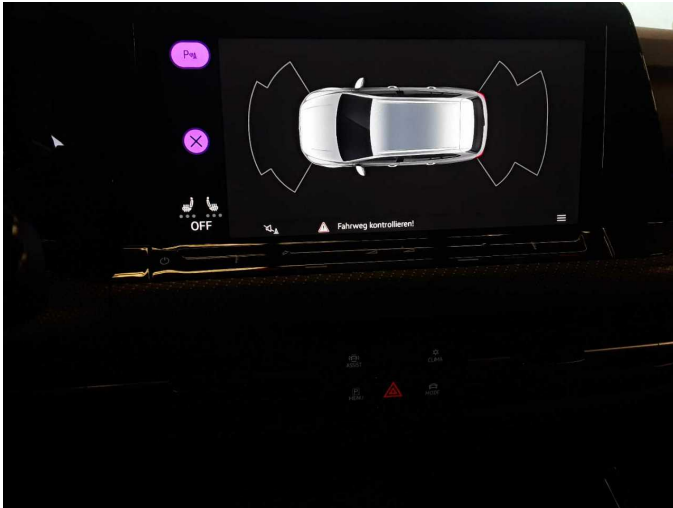


Figure 25: Misc.



Figure 26: Misc.



Figure 27: Misc.



Damage 1: Door - front left side: Door - Scratch(es) - Smart repair



Damage 1: Door - front left side: Door - Scratch(es) - Smart repair



Damage 2: Wheel / tyres: Alloy rim - front right side - Scratched - Loss in value



Damage 2: Wheel / tyres: Alloy rim - front right side - Scratched - Loss in value



Damage 3: Front bumper: Parking sensors - left side - Damaged - Replace



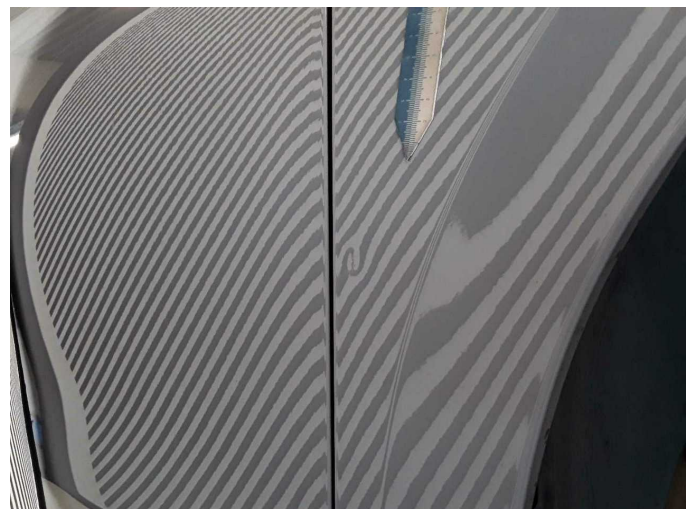
Damage 3: Front bumper: Parking sensors - left side - Damaged - Replace



Damage 4: Mudguard - right side: Mudguard - right side - Deformed - Repair and paint



Damage 4: Mudguard - right side: Mudguard - right side - Deformed - Repair and paint



Damage 4: Mudguard - right side: Mudguard - right side - Deformed - Repair and paint



Damage 5: Rear bumper: Rear bumper - Scratch(es) - Paint



Damage 5: Rear bumper: Rear bumper - Scratch(es) - Paint



Damage 5: Rear bumper: Rear bumper - Scratch(es) - Paint



Damage 6: Front bumper: Front bumper - Scratched - Paint



Damage 6: Front bumper: Front bumper - Scratched - Paint



Damage 6: Front bumper: Front bumper - Scratched - Paint



Damage 7: Boot lid / rear door: Boot lid - Deformed - Repair and paint



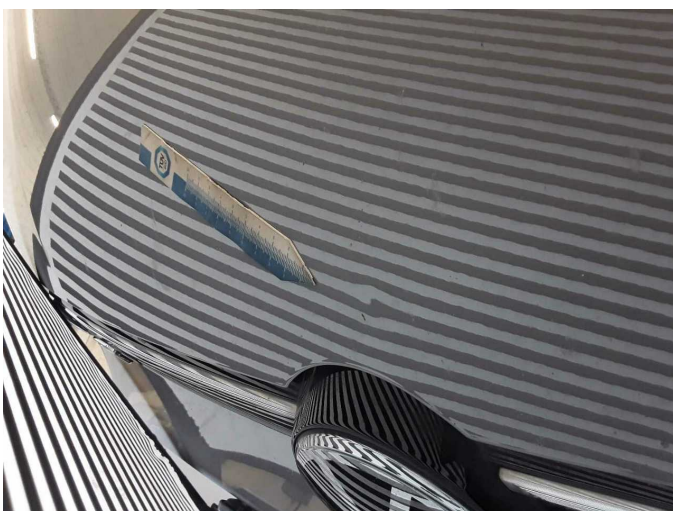
Damage 7: Boot lid / rear door: Boot lid - Deformed - Repair and paint



Damage 7: Boot lid / rear door: Boot lid - Deformed - Repair and paint



Damage 8: Bonnet: Bonnet - Dent / paintcoat damage - Repair and paint



Damage 8: Bonnet: Bonnet - Dent / paintcoat damage - Repair and paint



Damage 8: Bonnet: Bonnet - Dent / paintcoat damage - Repair and paint



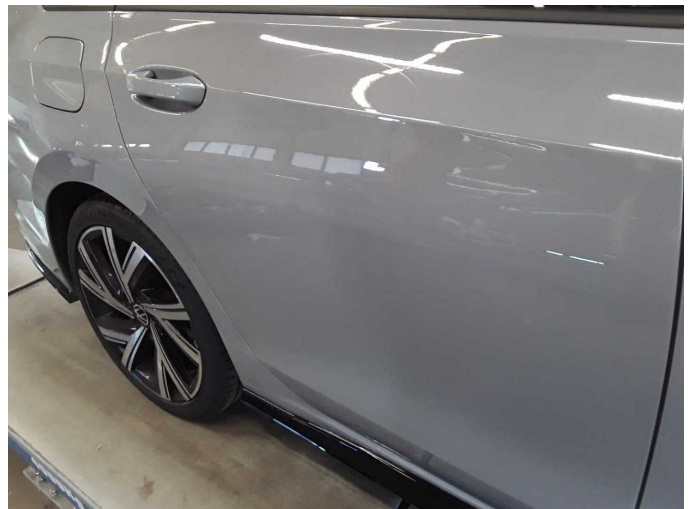
Repainting 1: Side panel - rear right side, Door - rear right side



Repainting 1: Side panel - rear right side, Door - rear right side



Repainting 1: Side panel - rear right side, Door - rear right side



Repainting 1: Side panel - rear right side, Door - rear right side



Wartungshistorie

(gemäß Auftraggeber Informationen)

Fahrgestellnummer: WVVZZZCD7RW807707

Hersteller / Modell: VOLKSWAGEN VW Golf Variant 2.0 TDI SCR DSG R-Line

Datum	KM-Stand	Beschreibung
28.01.2026	147.469	Bremsflüssigkeit; Bremsflüssigkeit ern; Motoröl b. Wartung; Ölfilter ern; Regelwartungsdienst; Wartung Sonstiges
12.08.2025	116.825	Getriebeöl ern/prüfen; Motoröl b. Wartung; Ölfilter ern; Regelwartungsdienst; Wartung Sonstiges
03.03.2025	87.691	Bremse Sonstiges; Bremsklötze hinten; Bremsklötze vorne; Bremsscheiben + Klötze h; Bremsscheiben + Klötze v; Bremsscheiben hinten; Bremsscheiben vorne; Kraftstofffilter ern; Luftfiltereinsatz ern; Motoröl b. Wartung; Ölfilter ern; Regelwartungsdienst; Systemtest/Eigendiagnose; Wartung Sonstiges
16.09.2024	58.056	Motoröl b. Wartung; Ölfilter ern; Regelwartungsdienst; Wartung Sonstiges
15.04.2024	29.493	Motoröl b. Wartung; Ölfilter ern; Regelwartungsdienst; Wartung Sonstiges