



BMW X1: 2

Vinnumber:	WBA31AC0905T20607	Versionname:	sDrive16d (85 kW)
First Registrationdate:	8/02/2021	Fiscalpower:	
Expertise Mileage:	127123	Power Kw:	85
Bodytype:		Body colour:	Grey
Gearbox:	MAN 6 VIT	Type of rims (mounted):	Aluminium
Transmission:		Parking lot:	3233
Fueltype:	Diesel		
Maintenance:	OK		
Maintenance:	3300.0		
Type of rims (mounted):	Aluminium		
Certificate of Conformity:	Yes		
Category:	Passenger Car		
Registration Certificate Car (BE):	Yes		
Registration Certificate Home (BE):	No		

Options

Number of keys total:	2	Luggage cover:	
Cruise Control:		Front parking sensors:	
Steering wheel multifunctional:		Rear parking sensors:	
Seats F heated:		Type of Tow bar:	Tow bar fixed
Radio multimedia:			
Type of headlighting:	Headlighting Halogen		
Type of GPS:	GPS big screen color		
Type of Lining:	Lining leather		
Type of climate control:	Autom climate control		
Type of GPS storage:	HD		

Limited Technical Inspection

Tyres

225/55/17/97 W				
Summer tyres:	Fr.L.	Goodyear: 5 mm	Fr.R.	Goodyear: 5 mm
	Re.L.	Bridgestone: 6 mm	Re.R.	Bridgestone: 6 mm
Tyre profile depth FL				5.0
Tyre profile depth FR				5.0
Tyre profile depth RL				6.0
Tyre profile depth RR				6.0
Tyre size FL				225/55 R 17 97 W
Tyre size FR				225/55 R 17 97 W
Tyre size RL				225/55 R 17 97 W
Tyre size RR				225/55 R 17 97 W
Tyre type FL				Summer
Tyre type FR				Summer
Tyre type RL				Summer
Tyre type RR				Summer
Tyre make FL				259
Tyre make FR				259
Tyre make RL				255
Tyre make RR				255

Assistance equipment

Number of charging cables (normal):	0		
Number of charging cables (rapid charge):	0		
Total cost ex VAT:			3590,56
Bonnet, Chemical polution, Repair and paint (complete):			406,19



Bumper F, Scratch(es), Spot repair 148,33



Door FL, Dent(s), Spot repair 207,84



Alloy rim FL, Scratch(es), Repair and paint (complete) 133,03



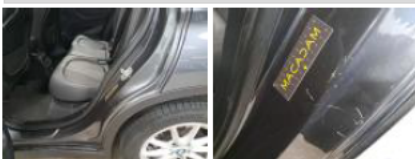
Door FL, Dent(s), Paintless dent repair 95,47



Door RL, Scratch(es), Acceptable 0,00



Step L, Scratch(es), Repair and paint (complete) 161,81



Luggage compartment cover, Damaged, Replace 250,94



Bumper R, Scratch(es), Repair and paint (complete) 296,58



Door FR, Dent(s), Spot repair 207,84



Wing trim RR, Scratch(es), Smart repair 116,69



Door RR, Scratch(es), Repair and paint (complete) 445,79



Door FR, Scratch(es), Repair and paint (complete) 445,79



Roof, Chemical polution, Repair and paint (complete) 674,26

