

Expertise

Protocol number: 46333639
Order No. / Reference: 25934909
Inspection date: 16 Jun 2026

Manufacturer: Mercedes-Benz

Model: Vito 116 CDI Tourer Lang Aut. PRO

VIN: W1VVLFEZ9T4550469



Vehicle details

Manufacturer / Type / Model / Equipment

Mercedes-Benz Vito 116 CDI Tourer Lang Aut. PRO

| | |
|---|-------------------|
| Vehicle Identification number | W1VVLFEZ9T4550469 |
| Mileage (Read) | 16,860 km |
| First registration | 21 Jul 2025 |
| Number of holders | 1 |
| Next periodical technical inspection | 08/2026 |
| (Report not on hand) | |

| | |
|------------------------------------|--------------------|
| Power / Engine displacement | 120 kw / 1,950 ccm |
|------------------------------------|--------------------|

| | |
|-----------------------------|------------|
| Fuel type / Cylinder | Diesel / 4 |
|-----------------------------|------------|

| | |
|----------------------------------|---------------|
| Gearbox / Number of gears | Automatic / 9 |
|----------------------------------|---------------|

| | |
|----------------------|------------|
| Type of drive | Rear drive |
|----------------------|------------|

| | |
|------------------------|-----|
| Type of vehicle | Van |
|------------------------|-----|

| | |
|-----------------------------|-------------------------|
| Colour / colour code | Obsidian black metallic |
|-----------------------------|-------------------------|

| | |
|----------------------|-------|
| Doors / Seats | 5 / 8 |
|----------------------|-------|

| | |
|------------------------|-------|
| Upholstery type | Cloth |
|------------------------|-------|

| | |
|-----------------------------|------------------|
| Colour of upholstery | Black-Anthracite |
|-----------------------------|------------------|

| | |
|--------------------|------------|
| Type of use | rental car |
|--------------------|------------|

| | |
|---------------------------|------------------------------|
| readiness to drive | Not roadworthy / moveable |
|---------------------------|------------------------------|



Vehicle details

| | | | |
|--|-------------------------------|--------------------------------|--|
| Maintenance booklet / proof | digital proof / complete | Next maintenance in | 391 Tag(e) |
| Key is / should be | 2 / 2 | FZG documents | ZB#2 (B) was available (copy), ZB#1 (S) was not available. |
| | | Letter No. | HN430524 |
| Previous damage / Accident | None detectable | Repainting | None detectable |
| Inspection conditions | sufficient | Lifting equipment / pit | yes |
| Test drive | Not performed | Engine function test | With complaint |
| readiness to drive | Not roadworthy / moveable | | |
| Manufacturer key number/ type code number | 2222 / ABB 06762 | | |
| Emission standard | EURO6;WLTP;EB;PI/CI;M, N1, N2 | fine dust sticker | |
| Permitted total weight | 3,100 kg | Empty weight | |

Tyres

Mounted tyres

| # | Tyre size | Type of tyre | Manufacturer | Tread depth |
|----|-----------------|--|--------------|-------------|
| 1) | 225/55 R17 109H | All-season tyres on Steel rim with wheel cover | Goodyear | 6mm / 6mm |
| 2) | 225/55 R17 109H | All-season tyres on Steel rim with wheel cover | Goodyear | 6mm / 6mm |

Legend: Tread depth information for the left tire is listed first, for the right tire it is listed second on the axle in the direction of travel.

TÜV SÜD Auto Partner GmbH
Wiesenring 2
04159 Leipzig

Inspection location
ARS Altmann AG Automobillogistik
Lilienthalstraße 2
29693 Hodenhagen



Equipment



Standard equipment

- ABS, ESP, ASR, EBV, BAS (Anti-lock Braking System (ABS) - Electronic Stability Program (ESP) - Traction Control (ASR) - Electronic Brakeforce Distribution (EBV) - Brake Assist (BAS))
- Airbag: Thorax-pelvis-sidebag for driver
- Airbag: Windowbag for driver and front passenger
- ATTENTION ASSIST (ATTENTION ASSIST can assist the driver on long, monotonous journeys by monitoring attention. If signs of fatigue or increasing inattention are detected, it suggests a break.)
- Battery: fleece battery 12 V / 92 Ah
- Hill start assist
- third brake light
- COC documents
- Roof cladding
- Electronic tachometer
- Driving light assistant (automatically switching on driving lights)
- Window in rear door/taillgate (with wiper/washer system)
- Front left window fixed in SW/ cargo area sliding door
- Electric window regulator driver/passenger (with anti-pinch protection, quick lowering and raising)
- Generator management (Generator management helps reduce fuel consumption and CO2 emissions. The generator is switched off and the vehicle's electrical system is powered by the battery when it is sufficiently charged. This relieves the engine of the burden of charging the battery, for example, during acceleration. - When braking and during coasting downhill, the generator is switched on and the vehicle's kinetic energy is recuperated to charge the battery.)
- Interior mirror (rearview mirror)
- Intelligent speed assistant
- Child safety locks on doors in the passenger compartment
- Instrument cluster with color display
- Communication module (LTE) for digital services
- Large fuel tank, approx. 70 liters
- leather steering wheel
- Steering wheel: Multifunction steering wheel
- Mercedes-Benz emergency call system
- Navigation: Navigation pre-installation
- Package: BlueEFFICIENCY (Efficiency Package)
- Upholstery: Caluma fabric, black
- Radio: MBUX multimedia system (high-resolution 10.25-inch touchscreen, Bluetooth interface with hands-free function, USB-C port, digital radio (DAB), setup of up to 7 profiles via Mercedes me, voice assistant with seat-specific voice recognition, technical requirements for over-the-air updates, satellite view, social navigation, dynamic offboard routing* (additional route alternatives), online music)
- Wheels: Premium complete wheel protection (3 years)
- Headlights: halogen technology
- Sliding door on the right, cargo/passenger compartment
- electromechanical power steering
- Seats: 3-seater bench, 2nd row
- Screw-in towing eye front/rear
- Passenger side airbag
- Driver's side airbag
- Airbag: Thorax airbag - Pelvis side airbag for front passenger
- Active Lane Keeping Assist
- Increased load capacity to 3,100 kg
- Electrically adjustable and heated exterior mirrors, left and right
- Outdoor temperature display
- Fixing points in the roof frame
- Brake assist, active
- Brake lights, adaptive
- Front cupholder
- Diesel particulate filter and SCR
- Entry grab handle for the cargo area sliding door
- Chassis: Comfort chassis
- Misfueling protection
- Left/right window in SW/ Cargo area sliding door
- Front right window fixed in SW/ cargo area sliding door
- electric parking brake
- Generator 14 V / 200 A
- Speed limit 210 km/h
- Transmission: 9G-TRONIC
- Seatbelt warning device for front passenger seat
- Seatbelt warning device for driver's seat
- Grab handle in the rear
- Lockable glove box
- Boot lid
- HOLD function
- Interior lights in the rear
- Interior trim, high-end finish
- Passive child detection in the vehicle
- Tempmatic controlled air conditioning
- Comfort closing (comfort opening and closing of windows)
- Headrests (2), front
- Plastic floor TPO passenger compartment
- Steering wheel adjustable for tilt and height
- Headlight range control
- Navigation accessories: Live Traffic Information
- Package: Aerodynamics
- Breakdown management
- Radio: Digital Radio DAB
- Radio accessories: 2-way speakers front + rear.
- Full wheel cover
- Tires: 225/55R17
- Tires: Tires without specified make
- Tires: Premium protection tires (3 years)
- Tires: Summer tires
- Tire pressure monitoring (on front and rear axles (wireless))
- Wheels: Steel rims 6.5 J x 17
- Sliding door: Active stop



- Seats: Rear seat mounting with quick-release fasteners, 2 rows of seats
- Seats: Driver's seat cushion depth adjustment
- 12V socket
- Ambient lighting tailgate
- Updates to the intelligent speed assistant
- Pre-installation for Remote Services Plus
- Warning triangle
- Immobiliser
- Central locking with radio remote control
- Car registration

Extra equipment

- Towing capacity 2500 kg
- Tinted rear windows, black glass
- Generator 14 V / 250 A
- Paint finish: Metallic
- Navigation
- Package: Parking package with reversing camera
- Package: Smartphone Integration Package
- Package: Winter Package (heated windscreen - heated seats for driver and front passenger - pockets on driver and front passenger seatbacks - heated multifunction steering wheel)
- Key: Multi-button radio remote control
- Seat: Lumbar support driver's seat
- Seats: Passenger compartment 2nd row, 3-seater bench / Comfort (outer seat foldable)
- Seats: Comfort driver's seat
- 12V socket for rear seat rows, right and left
- Bumpers painted in body color
- Traffic Sign Assistant

- Crosswind Assist
- Seats: 3-seater bench in the 1st row of the passenger compartment (with individual seat elements - folding outer seat)
- Seats: Passenger seat cushion depth adjustment
- Start-stop function
- Blind Spot Assist
- Ambient lighting in the exterior mirrors
- First aid kit
- Warm air duct to the passenger compartment
- ASSYST maintenance interval indicator
- Heat-insulating glass
- Auxiliary heater, electric

- Towbar (detachable ball head)
- Double cup holder in the center of the cockpit
- Semi-automatic air conditioning, TEMPMATIC in the rear
- Center console with storage compartment
- Package: Chrome Interior Package (chrome trim: in instrument panel and door trim, air vents, climate control elements, door control panel surround, center console in gloss black)
- Tires: All-season tires
- Electric suction fan, power level 5
- Sliding door on the left (cargo area)
- Seat: Lumbar support, passenger seat
- Seats: Passenger compartment 1st row, 3-seater bench / Comfort (outer seat foldable)
- Seats: Comfort passenger seat
- Seats: Seat attachment opposite 1st rear seat rails
- 12V socket in the trunk/cargo area
- Cruise control

Brief expert findings

| | |
|----------------------|--|
| Documents submitted | At the time of the inspection, the vehicle registration certificate Part 2 (title) was available, but the vehicle registration certificate Part 1 (document) was not. (Copy) |
| VIN comparison | The vehicle identification number (VIN) was read from the vehicle and its conformity with the submitted documents was confirmed by the undersigned during the inspection. |
| Inspection | The inspection conditions were sufficient for the assessment of the vehicle. Lifting equipment and/or a pit were available for examining the vehicle. |
| Test drive | No test drive/shunting maneuver was carried out during the inspection of the vehicle. |
| Engine function test | An engine test run was performed, problem has been detected This is due to the following reason.: Motorkontrollleuchte leuchtet |
| readiness to drive | The vehicle was not capable of driving under its own power at the time of inspection, but can be moved on its own axle with the aid of assistance. |



Value reducing factors

| No. | Component group | Description |
|-----|-------------------------|---|
| 1 | Door - front right side | Door edge - Scratched - Smart repair |
| 2 | Bonnet | Bonnet - dent(s) - Smooth repair work |
| 3 | Instrument panel | Indicator light (Motorkontolleuchte) - on - Perform diagnosis |
| 4 | Headlight | Headlight - left side - Stone chips - Replace |
| 5 | Rear bumper | Rear bumper - Scratch(es) - Paint |
| 6 | Boot lid / rear door | Boot lid - Dent / paintcoat damage - Repair and paint |
| 7 | Front bumper | Front bumper - Scratch(es) - Paint |
| 8 | Vehicle glazing | Windscreen - Broken / torn - repair according to calculation |

Wear and tear

| No. | Component group | Description |
|-----|--------------------------|---|
| 1 | Door - front right side | Door - dent(s) - No deduction |
| 2 | Door - front left side | Door - dent(s) - No deduction |
| 3 | Mudguard - left side | Mudguard - left side - dent(s) - No deduction |
| 4 | Sliding door - left side | Sliding door - dent(s) - No deduction |

The vehicle shows signs of wear and tear commensurate with its age and use.

Paint coat thickness measurement

| | | | |
|------------------------------|--------|-----------------------------|--------|
| Roof | 108 µm | Roof rail - left side | 109 µm |
| Roof rail - right side | 110 µm | Boot lid / rear door | 96 µm |
| Mudguard - left side | 119 µm | Mudguard - right side | 120 µm |
| Bonnet | 105 µm | Side panel - rear left side | 95 µm |
| Side panel - rear right side | 89 µm | Door - rear left side | 91 µm |
| Door - rear right side | 96 µm | Door - front left side | 123 µm |
| Door - front right side | 98 µm | | |

Order/Scope of Order

An order was placed to prepare a sales report for the described vehicle. This report includes the following:

- Description of key vehicle information
- Documentation of equipment features
(*Delivery by third-party service providers*)
- Documentation of damage, defects, missing parts
- Documentation of prior damage, unrepaired prior damage, repainting
- A brief visual or functional inspection of the equipment details, if possible.
(*Functional testing of driver assistance systems is not included in the scope of services!*)
- a photographic documentation of the vehicle



Basis for the order

This product is based on the guidelines for vehicle returns and valuations of light commercial vehicles published by Alphabet Fleet Management GmbH. The expert makes the specific findings in each individual case objectively, within the framework of the prescribed standards, based on their own expertise.

The vehicle inspection takes place in a fully assembled, unassembled state.

Damage or defects that can only be detected during disassembly/diagnostic work or through further investigation remain within the realm of prognostic risk. An increased risk exists due to concealed defects caused by fraudulent misrepresentation and which were not identifiable by the expert.

Damage or defects resulting from normal use or wear and tear of the vehicle will be accepted in accordance with the applicable standard.

There was no explicit identification or monetary consideration of the expected features within the product.

Features which, in their nature and extent, slightly exceed normal use but do not constitute unacceptable damage, will be documented and indicated as signs of wear, if applicable.

Damage or defects that, according to the applicable standard, can no longer be attributed to normal use or wear and tear are listed under "Value Reducing Factors" in the product description.

Depending on the product specification, a monetary ID can be provided. If this takes place, the costs can be 100% d or pro rata depending on the vehicle's age and mileage.

Previous damages

No apparent prior damage that had been repaired could be found on the vehicle.



Figure 1: Diagonal front (left)



Figure 2: Diagonal front (right)



Figure 3: Diagonal rear (left)



Figure 4: Diagonal rear (right)

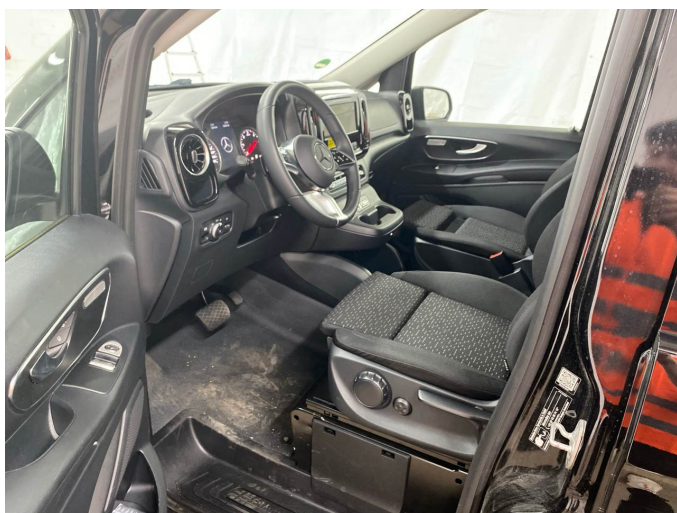


Figure 5: Interior - front



Figure 6: Interior - rear



Figure 7: Instrument cluster



Figure 8: Instrument panel



Figure 9: Interior 360° view



Figure 10: Cargo area



Figure 11: VIN



Figure 12: Mounted tyres



Figure 13: Documents

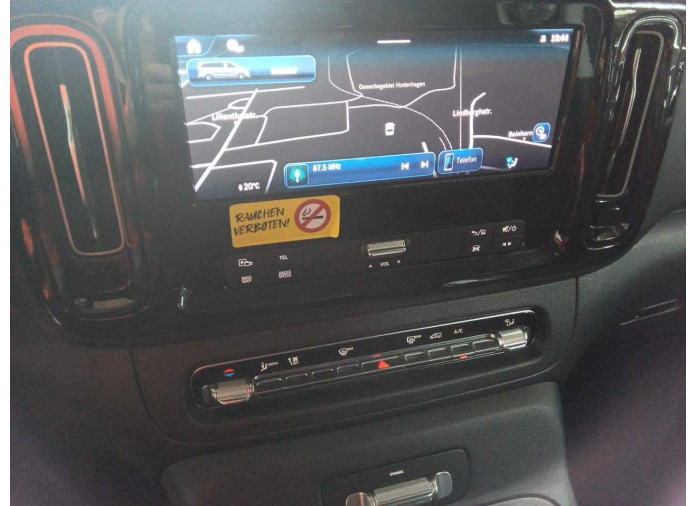


Figure 14: Navigation



Figure 15: Misc.



Figure 16: Misc.



Figure 17: Misc.



Figure 18: Misc.



Figure 19: Misc.



Figure 20: Misc.

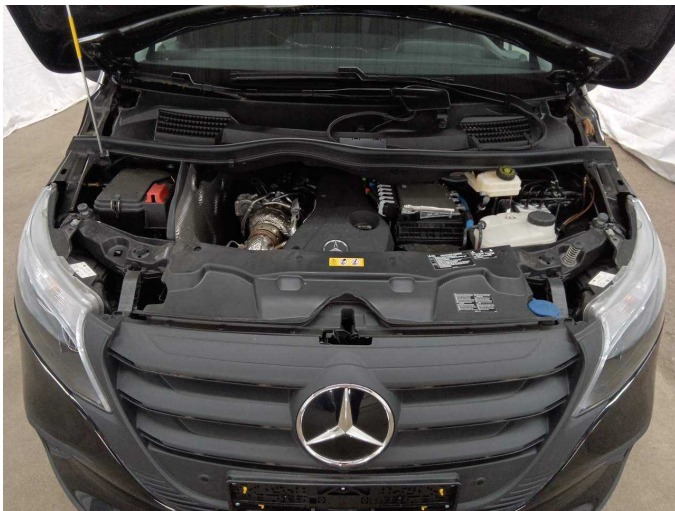


Figure 21: Misc.



Figure 22: Misc.

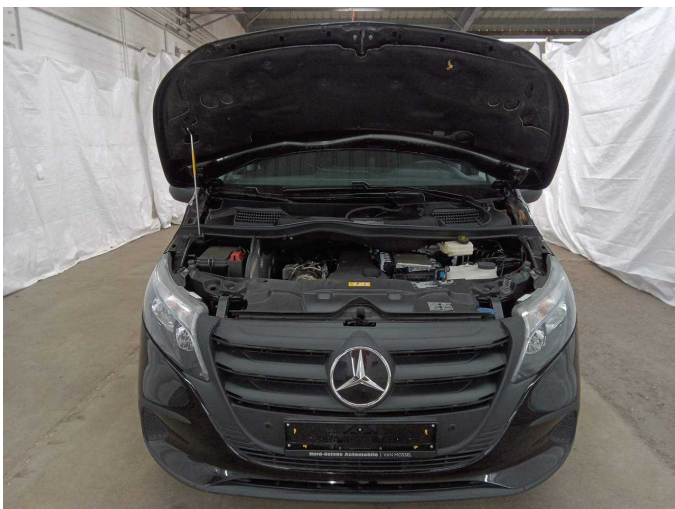


Figure 23: Misc.

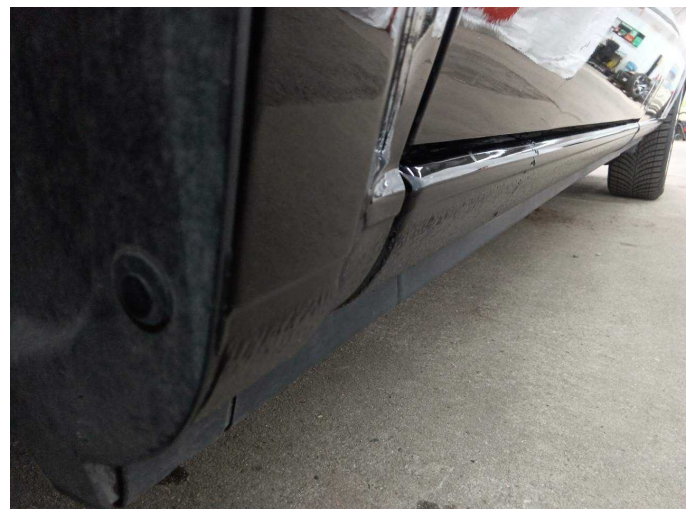


Figure 24: Misc.



Figure 25: Misc.



Figure 26: Misc.



Figure 27: Misc.



Figure 28: Misc.



Figure 29: Misc.



Figure 30: Misc.



Figure 31: Misc.



Figure 32: Misc.



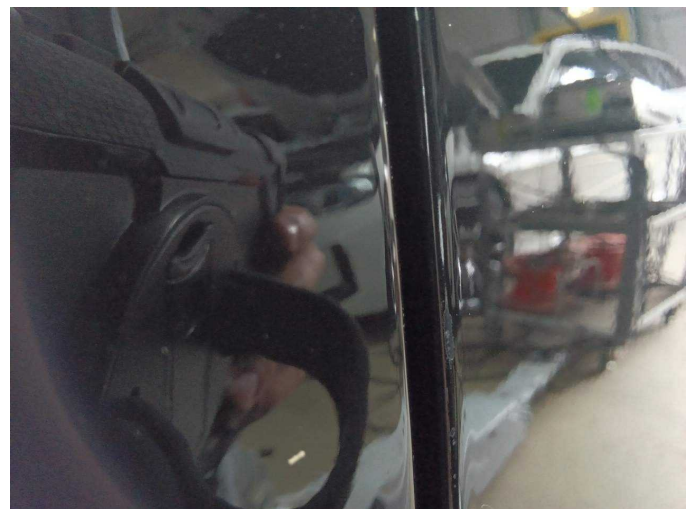
Figure 33: Misc.



Figure 34: Misc.



Figure 35: Misc.



Damage 1: Door - front right side: Door edge - Scratched - Smart repair



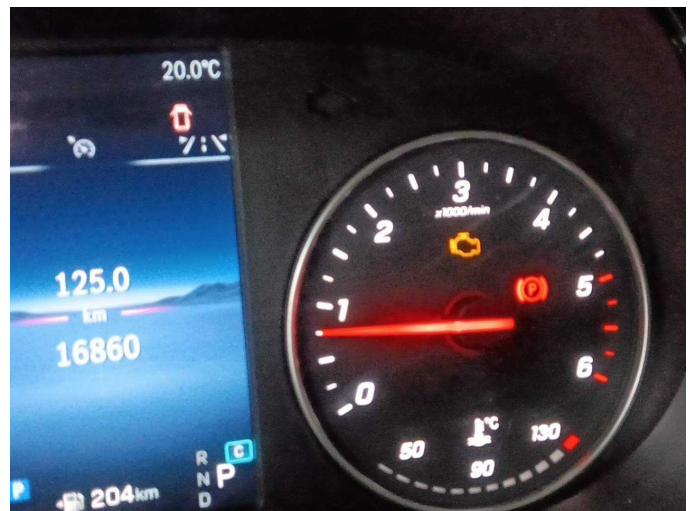
Damage 2: Bonnet: Bonnet - dent(s) - Smooth repair work



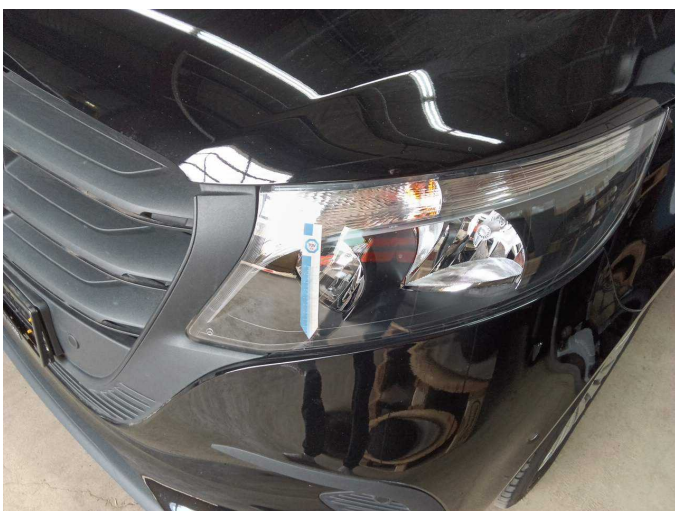
Damage 2: Bonnet: Bonnet - dent(s) - Smooth repair work



Damage 3: Instrument panel: Indicator light (Motorkontolleuchte) - on - Perform diagnosis



Damage 3: Instrument panel: Indicator light (Motorkontolleuchte) - on - Perform diagnosis



Damage 4: Headlight: Headlight - left side - Stone chips - Replace



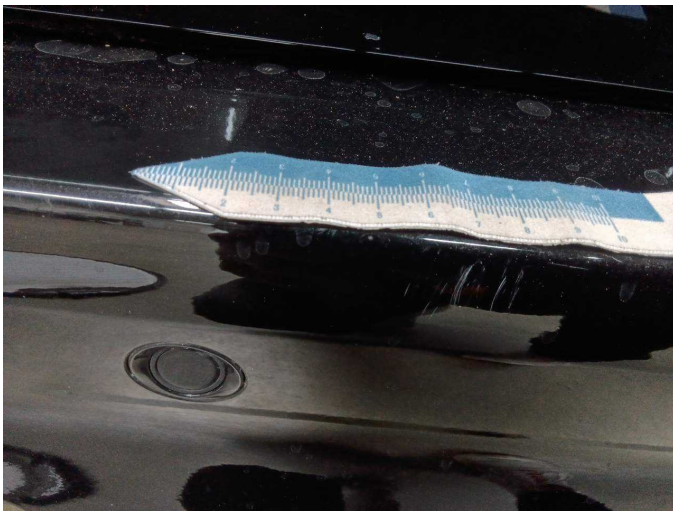
Damage 4: Headlight: Headlight - left side - Stone chips - Replace



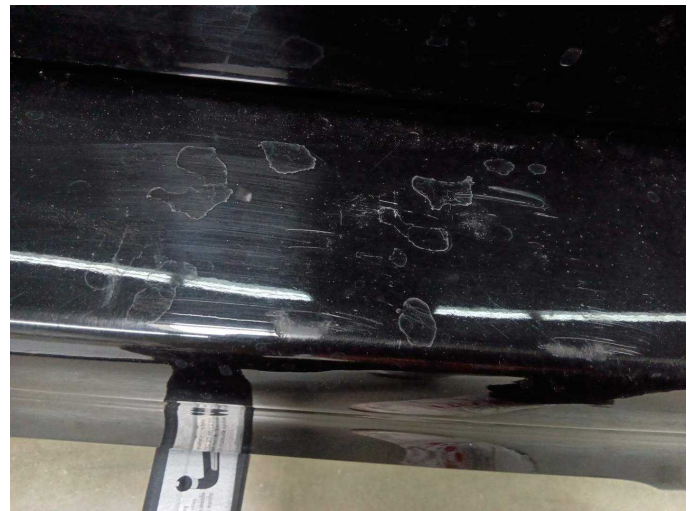
Damage 5: Rear bumper: Rear bumper - Scratch(es) - Paint



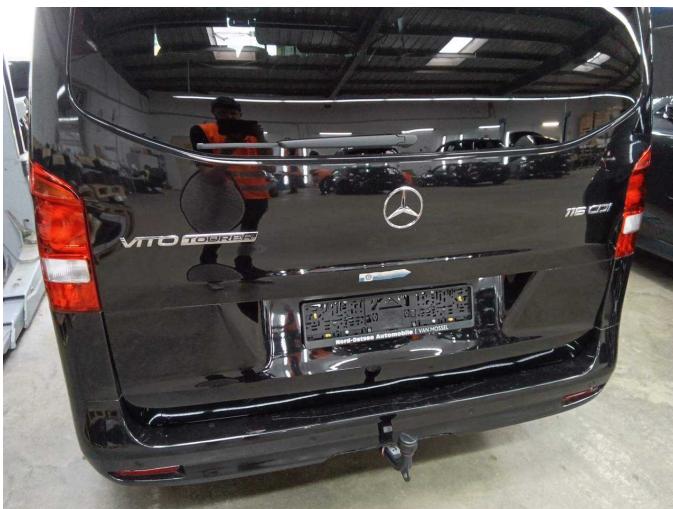
Damage 5: Rear bumper: Rear bumper - Scratch(es) - Paint



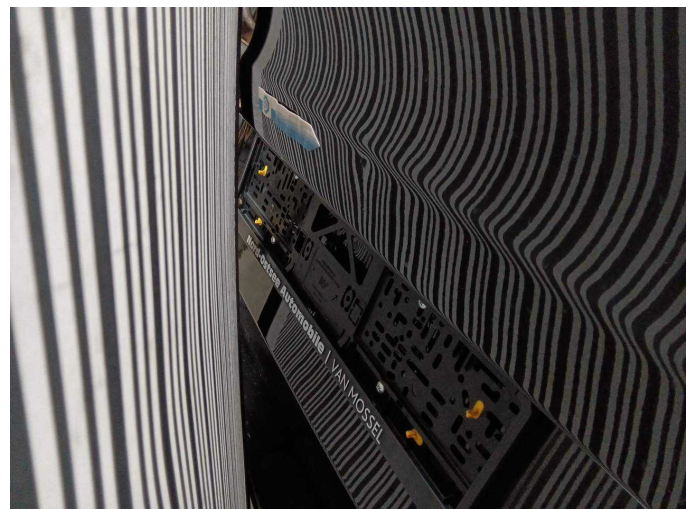
Damage 5: Rear bumper: Rear bumper - Scratch(es) - Paint



Damage 5: Rear bumper: Rear bumper - Scratch(es) - Paint



Damage 6: Boot lid / rear door: Boot lid - Dent / paintcoat damage - Repair and paint



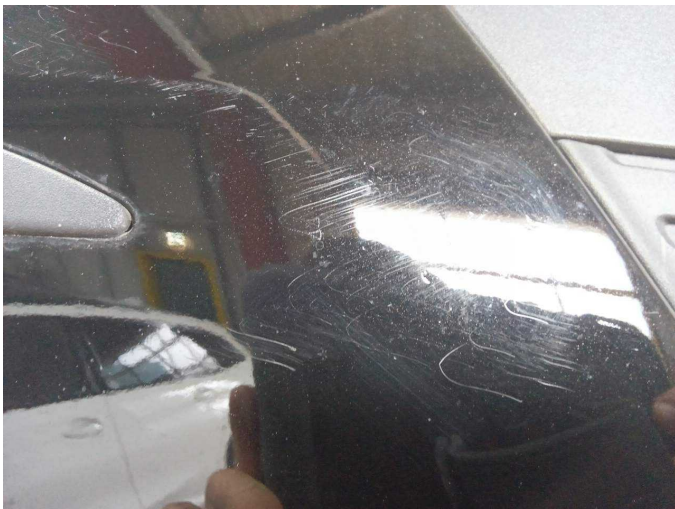
Damage 6: Boot lid / rear door: Boot lid - Dent / paintcoat damage - Repair and paint



Damage 7: Front bumper: Front bumper - Scratch(es) - Paint



Damage 7: Front bumper: Front bumper - Scratch(es) - Paint



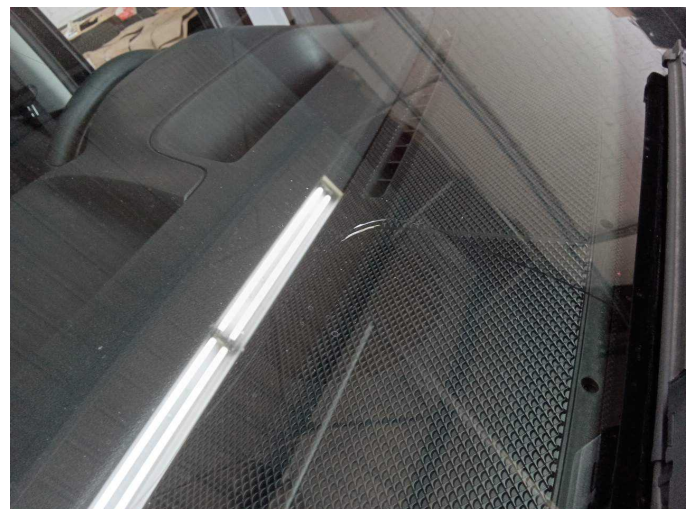
Damage 7: Front bumper: Front bumper - Scratch(es) - Paint



Damage 8: Vehicle glazing: Windscreen - Broken / torn - repair according to calculation



Damage 8: Vehicle glazing: Windscreen - Broken / torn - repair according to calculation



Damage 8: Vehicle glazing: Windscreen - Broken / torn - repair according to calculation



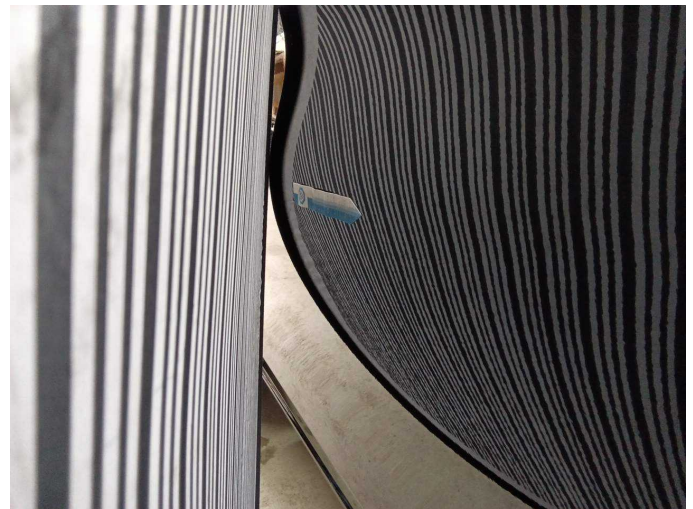
Wear and tear 1: Door - front right side: Door - dent(s) - No deduction



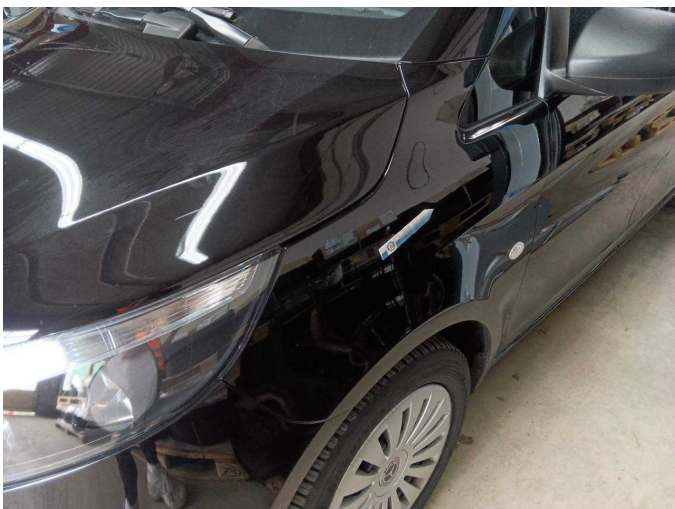
Wear and tear 1: Door - front right side: Door - dent(s) - No deduction



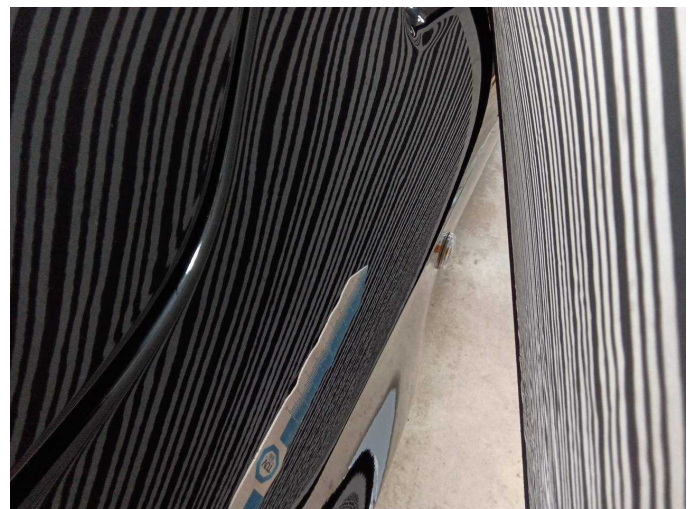
Wear and tear 2: Door - front left side: Door - dent(s) - No deduction



Wear and tear 2: Door - front left side: Door - dent(s) - No deduction



Wear and tear 3: Mudguard - left side: Mudguard - left side - dent(s) - No deduction



Wear and tear 3: Mudguard - left side: Mudguard - left side - dent(s) - No deduction



Wear and tear 4: Sliding door - left side: Sliding door - dent(s) - No deduction



Wear and tear 4: Sliding door - left side: Sliding door - dent(s) - No deduction



Wear and tear 4: Sliding door - left side: Sliding door - dent(s) - No deduction