

Expertise

Protocol number: 46162454
Order No. / Reference: 26533437
Inspection date: 25 Jun 2026

Manufacturer: Ford

Model: Focus 1.0 EcoBoost Hybrid Aut. ST-LINE X

VIN: WF0NXXGCHNNA25741



Vehicle details

Manufacturer / Type / Model / Equipment

Ford Focus 1.0 EcoBoost Hybrid Aut. ST-LINE X

Vehicle Identification number WF0NXXGCHNNA25741

Mileage (Read) 124,635 km

First registration 20 Jan 2023

Number of holders 1

Power / Engine displacement 92 kw / 999 ccm

Fuel type / Cylinder Hybrid Petrol / E / 3

Gearbox / Number of gears Automatic / 7

Type of drive Front drive

Type of vehicle Saloon car

Colour / colour code Agate Black Metallic

Doors / Seats 5 / 5

Upholstery type Cloth

Colour of upholstery Anthracite-Black



Vehicle details

Maintenance booklet / proof	Available / complete	Next maintenance in	86 %
Last service on / at	10/2023 at 30,278 km		
Key is / should be	2 / 2	FZG documents	ZB#2 (B) was available (copy), ZB#1 (S) was not available.
		Letter No.	GP500993
Previous damage / Accident	Detectable	Repainting	Detectable
Inspection conditions	sufficient	Lifting equipment / pit	yes
Test drive	Not performed	Engine function test	Performed
Manufacturer key number/ type code number	8566 / BUB 00145		
Emission standard	EURO6;WLTP;AP;PI/CI; M, N1 I	fine dust sticker	
Permitted total weight	1,910 kg	Empty weight	

Tyres

Mounted tyres

#	Tyre size	Type of tyre	Manufacturer	Tread depth
1)	235/40 R18 95W	Summer tyres on Light alloy	Michelin	4mm / 4mm
2)	235/40 R18 95W	Summer tyres on Light alloy	Michelin	4mm / 4mm

Additional tyres

#	Tyre size	Type of tyre	Manufacturer	Tread depth
1)	205/60 R16 96H	Winter tyres on Light alloy	Michelin	5mm / 5mm
2)	205/60 R16 96H	Winter tyres on Light alloy	Michelin	5mm / 5mm

Replacement

Typ	Tyre size	Type of tyre	Manufacturer	Tread depth
	Tirefit	Expiration date 11/2026		

Legend: Tread depth information for the left tire is listed first, for the right tire it is listed second on the axle in the direction of travel.



Equipment

Standard equipment

- Airbag: Passenger airbag deactivation
- Anti-lock braking system (ABS) with electronic brake force distribution (EBD)
- Hill start assist
- Roof spoiler painted in car color
- Tachometer
- Lane keeping assist including lane keeping assist
- Electric windows front and rear
- FordKeyFree system including Ford Power start function
- Luggage compartment cover
- Speed limiter
- Transmission: 7-speed PowerShift automatic transmission
- rear window wiper
- Interior mirror, automatically dimming
- Isofix bracket
- Knee pads on the center console
- LED taillights
- Steering wheel: Paddle shifters on the steering wheel
- Make-up mirrors in driver and passenger sun visors
- Center console "Premium" front
- Navigation: Ford SYNC 4 including Ford navigation system with AppLink, 13.2" touchscreen and DAB/DAB+
- Front and rear parking pilot system
- Post-Collision Assist
- Tire repair kit
- Rear view camera
- Windscreen wipers with rain sensor (sensitivity adjustable)
- Side windows from the 2nd row of seats and rear window, dark tinted.
- Seats: Passenger seat, 2-way adjustable
- Seats: Rear seat backrest
- Start-stop system
- Carpet floor mats front and rear, velour
- 2 USB ports in the center console, rear
- Warning system for unfastened seat belts for the 1st and 2nd rows of seats
- Ambient lighting, front
- Exterior mirrors painted in body color, electrically adjustable, heated and foldable
- Black woven fabric headliner
- Digital instrument panel 12.3" (31.2 cm screen diagonal)
- Electronic Safety and Stability Program (ESP)
- Chassis: Sport-tuned
- Electric parking brake with auto-hold function
- FordPass Connect including live traffic information
- Luggage compartment lighting
- Cruise control
- Illuminated glove compartment
- Back window, heater
- Interior lighting with LED technology
- Intelligent security system
- Air conditioning with automatic temperature control
- Headrests: 2 front and 3 rear, height adjustable
- Steering wheel: ST-Line design
- Adjustable steering column
- Armrest - centre, rear
- MyKey key system (individually programmable second key)
- Emergency call assistant
- Otto particulate filter
- Upholstery: Cloth
- Pre-Collision Assist
- Tire Pressure Monitoring System (TMPS)
- Gear knob, Sensico in leather look
- Headlight assistant with day/night sensor
- Selective driving mode switch
- Electromechanical speed-dependent power steering
- Seats: Driver's seat height adjustable
- Seats: Front sports seats with enhanced lateral support
- Phone accessories: Inductive charging station for mobile devices
- Variable radiator air intake
- Electronic immobilizer
- Central locking with remote control and remote luggage compartment release



Extra equipment

- Tires: 8 J x 18 light alloy wheels (4) with 235/40 R 18 (in 5x3-spoke Y-design, in pearl grey premium paint finish, diamond-turned)
- Package: Driver Assistance Package II (Drive Assist Intelligent adaptive cruise control Lane keeping assist Traffic jam assist with Stop&Go Traffic sign recognition Wrong-way driver warning radio Evasive steering assist Distance display and distance warning Driver drowsiness detection High beam assist (in conjunction with adaptive LED matrix headlights with glare-free high beam assist) Blind spot assist with cross traffic alert including emergency braking function (when reversing out of parking spaces) and trailer recognition Rear view camera with split view Electrically folding exterior mirrors with surround view)
- eCall
- Paint finish: Metallic
- LED matrix headlights, adaptive (LED matrix low beam - LED matrix high beam - LED matrix cornering light, dynamic - LED daytime running lights incl. integrated LED turn signals at the front - LED cornering light, static, incl. maneuvering and bad weather light - Automatic headlight range control - High beam assist, glare-free)
- Package: ST-Line styling package (red painted brake calipers - large roof spoiler painted in body color - pedals with aluminum covers - front door sill trims, ST-Line design)
- Package: Winter (heated windscreen - heated steering wheel - individually and variably heated front seats)

Brief expert findings

Documents submitted	At the time of the inspection, the vehicle registration certificate Part 2 (title) was available, but the vehicle registration certificate Part 1 (document) was not. (Copy)
VIN comparison	The vehicle identification number (VIN) was read from the vehicle and its conformity with the submitted documents was confirmed by the undersigned during the inspection.
Inspection	The inspection conditions were sufficient for the assessment of the vehicle. Lifting equipment and/or a pit were available for examining the vehicle.
Test drive	No test drive/shunting maneuver was carried out during the inspection of the vehicle.
Engine function test	An engine test run was performed.

Value reducing factors

No.	Component group	Description
1	Trim / covers	Floor mats - Damaged - Replace
2	Door - front left side	Door - Scratch(es) - Smart repair
3	Wheel / tyres	Alloy rim - front right side - Scratched - Loss in value
4	Wheel / tyres	Alloy rim - front left side - Scratched - Loss in value
5	Trim / covers	Boot lid - interior trim - Damaged - Replace
6	Front bumper	Front bumper - Scratch(es) - Paint
7	Mudguard - left side	Mudguard - left side - Dent / paintcoat damage - Repair and paint
8	Door - rear right side	Door - Dent / paintcoat damage - Repair and paint
9	Bonnet	Bonnet - Scratch(es) - Paint

Previous damages

No.	Previous damage	Extent of damage (Net)
1	Side right, Professionally repaired, Invoice of repair done	Non-existent

Repainting

No.	Repainting
1	Side panel - rear left side, Door - rear left side, Door - front left side, Professionally carried out, Invoice of repair done



Order/Scope of Order

An order was placed to prepare a sales report for the described vehicle. This report includes the following:

- Description of key vehicle information
- Documentation of equipment features
(Delivery by third-party service providers)
- Documentation of damage, defects, missing parts
- Documentation of prior damage, unrepaired prior damage, repainting
- A brief visual or functional inspection of the equipment details, if possible.
(Functional testing of driver assistance systems is not included in the scope of services!)
- a photographic documentation of the vehicle

Basis for the order

This product is based on the guidelines for vehicle returns and valuations published by Alphabet Fleet GmbH. The expert makes the specific findings in each individual case objectively, within the framework of the prescribed standards, based on their own expertise.

The vehicle inspection takes place in a fully assembled, unassembled state.

Damage or defects that can only be detected during disassembly/diagnostic work or through further investigation remain within the realm of prognostic risk. An increased risk exists due to concealed defects caused by fraudulent misrepresentation and which were not identifiable by the expert.

Damage or defects resulting from normal use or wear and tear of the vehicle will be accepted in accordance with the applicable standard.

There was no explicit identification or monetary consideration of the expected features within the product.

Features which, in their nature and extent, slightly exceed normal use but do not constitute unacceptable damage, will be documented and indicated as signs of wear, if applicable.

Damage or defects that, according to the applicable standard, can no longer be attributed to normal use or wear and tear are listed under "Value Reducing Factors" in the product description.

Depending on the product specification, a monetary ID can be provided. If this takes place, the costs can be 100% d or pro rata depending on the vehicle's age and mileage.

Previous damages

Professionally repaired previous damages were found at the vehicle.

Comments

- Winterradsatz ist kein Bestandteil des Auslieferungsumfangs.

ALPHABET



Figure 1: Diagonal front (left)

ALPHABET



Figure 2: Diagonal front (right)

ALPHABET



Figure 3: Diagonal rear (left)

ALPHABET



Figure 4: Diagonal rear (right)

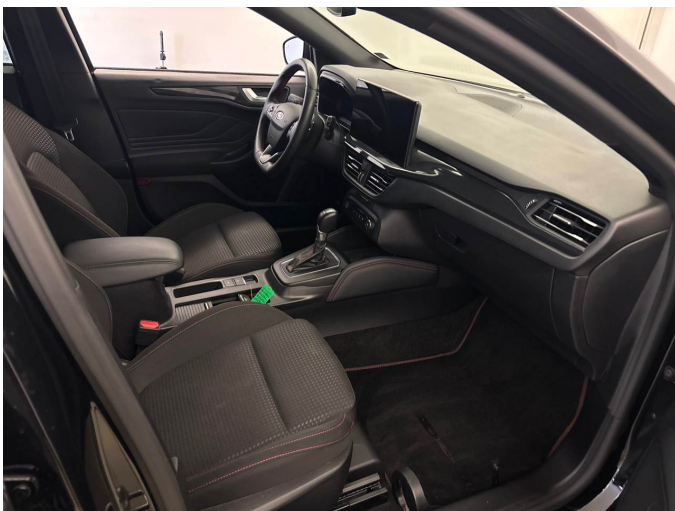


Figure 5: Interior - front



Figure 6: Interior - rear



Figure 7: Instrument cluster



Figure 8: Instrument panel



Figure 9: Interior 360° view



Figure 10: Cargo area



Figure 11: VIN



Figure 12: Mounted tyres



Figure 19: Misc.



Figure 20: Misc.



Figure 21: Misc.



Figure 22: Misc.



Figure 23: Misc.



Figure 24: Misc.



Figure 25: Misc.



Figure 26: Misc.

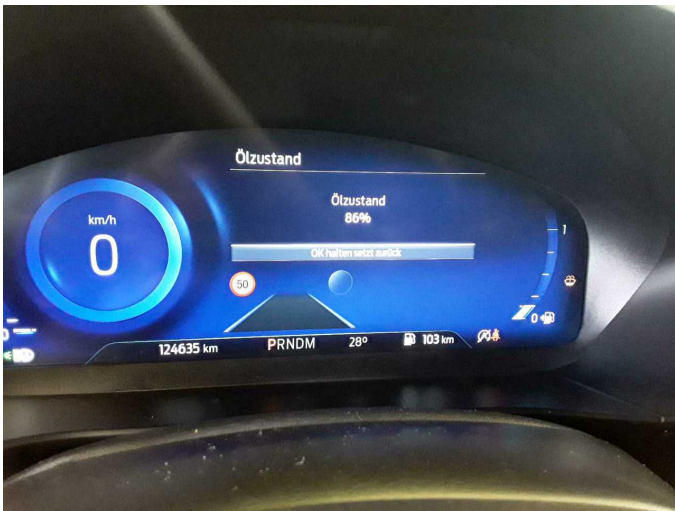


Figure 27: Misc.



Figure 28: Misc.

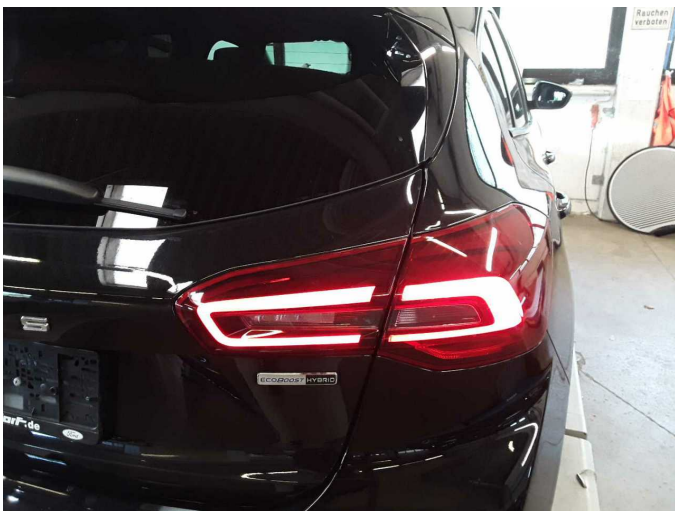


Figure 29: Misc.



Damage 1: Trim / covers: Floor mats - Damaged - Replace



Damage 2: Door - front left side: Door - Scratch(es) - Smart repair



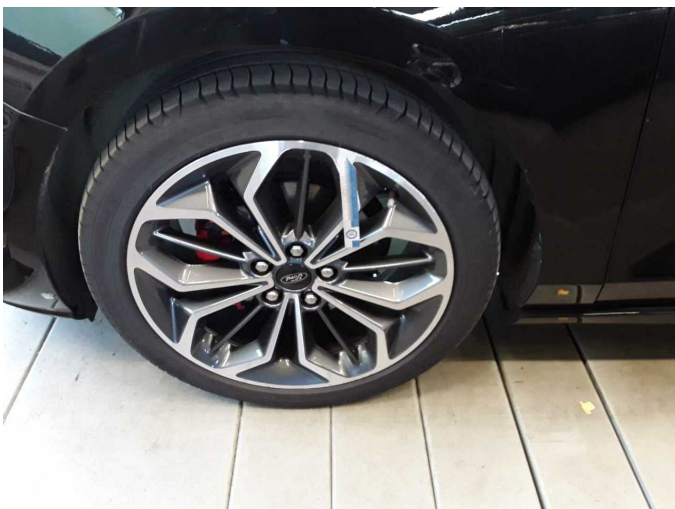
Damage 2: Door - front left side: Door - Scratch(es) - Smart repair



Damage 3: Wheel / tyres: Alloy rim - front right side - Scratched - Loss in value



Damage 3: Wheel / tyres: Alloy rim - front right side - Scratched - Loss in value



Damage 4: Wheel / tyres: Alloy rim - front left side - Scratched - Loss in value



Damage 4: Wheel / tyres: Alloy rim - front left side - Scratched - Loss in value



Damage 5: Trim / covers: Boot lid - interior trim - Damaged - Replace



Damage 5: Trim / covers: Boot lid - interior trim - Damaged - Replace



Damage 5: Trim / covers: Boot lid - interior trim - Damaged - Replace



Damage 6: Front bumper: Front bumper - Scratch(es) - Paint



Damage 6: Front bumper: Front bumper - Scratch(es) - Paint



Damage 7: Mudguard - left side: Mudguard - left side - Dent / paintcoat damage - Repair and paint



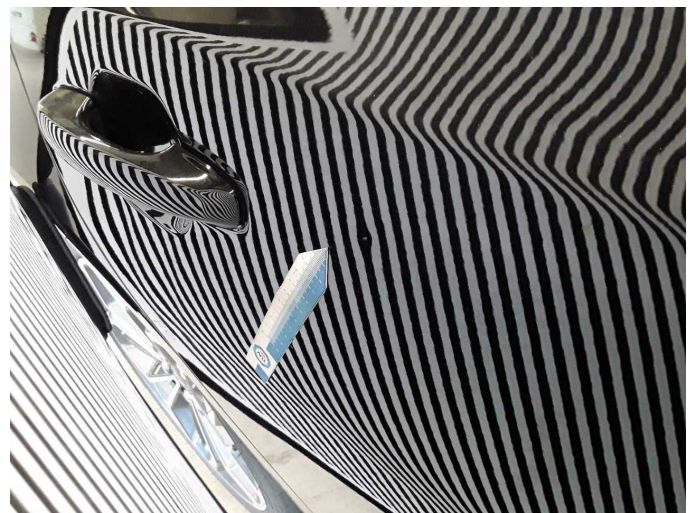
Damage 7: Mudguard - left side: Mudguard - left side - Dent / paintcoat damage - Repair and paint



Damage 7: Mudguard - left side: Mudguard - left side - Dent / paintcoat damage - Repair and paint



Damage 8: Door - rear right side: Door - Dent / paintcoat damage - Repair and paint



Damage 8: Door - rear right side: Door - Dent / paintcoat damage - Repair and paint



Damage 9: Bonnet: Bonnet - Scratch(es) - Paint



Damage 9: Bonnet: Bonnet - Scratch(es) - Paint



Repainting 1: Side panel - rear left side, Door - rear left side, Door - front left side



Repainting 1: Side panel - rear left side, Door - rear left side, Door - front left side



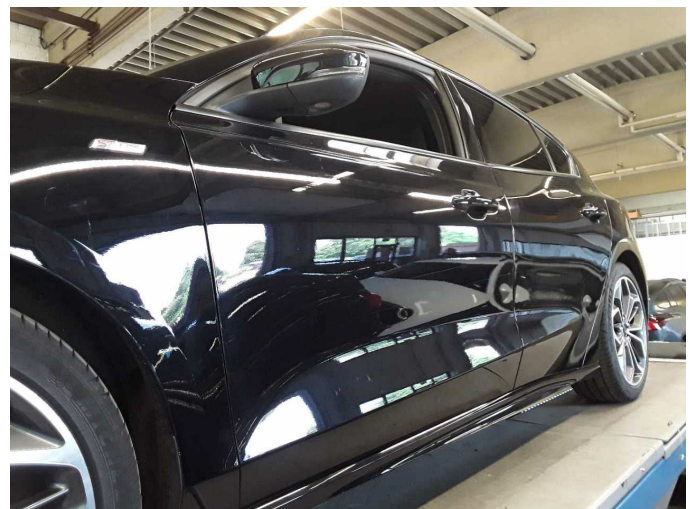
Repainting 1: Side panel - rear left side, Door - rear left side, Door - front left side



Repainting 1: Side panel - rear left side, Door - rear left side, Door - front left side



Repainting 1: Side panel - rear left side, Door - rear left side, Door - front left side



Repainting 1: Side panel - rear left side, Door - rear left side, Door - front left side