

Expertise

Protocol number: 46260915
Order No. / Reference: 26597766
Inspection date: 1 Jul 2026

Manufacturer: Audi

Model: A4 Avant 35 TDI S tronic advanced

VIN: WAUZZZF43PA043499



Vehicle details

Manufacturer / Type / Model / Equipment

Audi A4 Avant 35 TDI S tronic advanced

Vehicle Identification number WAUZZZF43PA043499

Mileage (Read) 192,294 km

First registration 19 Jan 2023

Number of holders 1

Next periodical technical inspection 01/2028
(Report on hand)

Power / Engine displacement 120 kw / 1,968 ccm

Fuel type / Cylinder Hybrid Diesel / E / 4

Gearbox / Number of gears Automatic / 7

Type of drive Front drive

Type of vehicle Station wagon

Colour / colour code Black University

Doors / Seats 5 / 5

Upholstery type Part leather

Colour of upholstery Black

Re-import no

readiness to drive Roadworthy



Vehicle details

Maintenance booklet / proof	digital proof / complete	Next maintenance in	100 km
Last service on / at	05/2026 at 186,122 km		
Key is / should be	2 / 2	FZG documents	ZB#2 (B) was available (copy), ZB#1 (S) was not available.
		Letter No.	GP954290
Previous damage / Accident	None detectable	Repainting	None detectable
Inspection conditions	sufficient	Lifting equipment / pit	yes
Test drive	Not performed	Engine function test	Performed
readiness to drive	Roadworthy		
Manufacturer key number/ type code number	0588 / BPK 01116		
Emission standard	EURO6;WLTP;AP;PI/CI; M, N1 I	fine dust sticker	
Permitted total weight	2,165 kg	Empty weight	

Tyres

Mounted tyres

#	Tyre size	Type of tyre	Manufacturer	Tread depth
1)	245/35 R19 93Y	Summer tyres on Light alloy	Continental	3mm / 3mm
2)	245/35 R19 93Y	Summer tyres on Light alloy	Continental	5mm / 5mm

Additional tyres

#	Tyre size	Type of tyre	Manufacturer	Tread depth
1)	205/60 R16 92H	Winter tyres on Light alloy	Continental	5mm / 5mm
2)	205/60 R16 96H	Winter tyres on Light alloy	Pirelli	7mm / 7mm

Replacement

Typ	Tyre size	Type of tyre	Manufacturer	Tread depth
Tirefit		Expiration date 10/2026		

Legend: Tread depth information for the left tire is listed first, for the right tire it is listed second on the axle in the direction of travel.



Equipment

Standard equipment

- AdBlue tank (12 liters)
- Airbag: Front side airbags and head airbag system
- Anti-lock braking system (ABS)
- Audi connect emergency call & service with Audi connect Remote & Control
- Exterior mirror housings in body color
- third brake light, raised
- Black roof rails
- Tachometer
- Electromechanical parking brake
- Electronic Stability Control (ESC)
- electric window regulator
- Remote key, without SafeLock
- Cruise control system with speed limiter
- rear window wiper
- Interior lighting
- Child lock
- boot floor mat
- Headrests (5)
- Manual cargo cover
- Steering wheel: Leather steering wheel in 3-spoke design with multifunction
- Mild hybrid
- Non-smoking version
- Radio: MMI Radio plus
- Tire pressure monitoring system
- Electromechanical power steering
- Seats: Rear seat backrest foldable
- Start-stop system
- Glazing: Windscreen in heat-insulating and acoustic glazing
- Airbag for driver and front passenger
- Accent areas matte black
- Traction control (ASR)
- Audi pre sense city
- Electrically adjustable and heated exterior mirrors
- Vehicle tool kit
- Fabric headliner
- Diesel particulate filter (DPF)
- Door sill trims with aluminum inlay at the front
- Electronic Differential Lock (EDS)
- Driver Information System
- Window channel strips in black (rubber)
- front and rear floor mats
- Transmission: S tronic 7-speed
- Top speed limited to 210 km/h
- Interior mirror dimming
- ISOFIX child seat attachment and Top Tether for the outer rear seats
- Loading floor
- LED taillights
- Steering column, manually adjustable in height and axis
- Light/rain sensor
- front center armrest
- Wheel: Tires optimized for rolling resistance, speed-limited
- Radio accessories: Digital radio reception (DAB)
- Tire repair kit (compressor and tire sealant, maximum permissible speed 80 km/h)
- Seats: Front seats manually adjustable
- First aid kit with warning triangle
- Electronic immobilizer
- Central locking "Keyless-Go" without deadbolt



Extra equipment

- Towbar, mechanically swiveling
- Parking aid plus (Acoustic and visual parking aid front and rear assists with parking and maneuvering. With selective, visual display of the distance to detected objects in the MMI display, depending on the current steering angle and direction of travel. The virtual lane indicator also provides lateral guide lines that are calculated in advance based on the currently selected steering angle. Measurement is carried out by ultrasonic sensors, discreetly integrated into the bumpers.)
- Paint finish: Solid
- Steering wheel: Leather steering wheel in 3-spoke design with multifunction plus
- Business Package
- Wheel: Audi Sport light alloy wheels, 10-V spokes, diamond-turned finish
- Radio accessories: Audi sound system
- Seat covers in microfiber Dinamica/leather combination
- front sports seats
- Glazing: Sun protection glazing, tinted
- Audi virtual cockpit plus
- Chassis: Sport chassis (with firmer spring and damping for more direct road contact and sportier handling, lowered by 23 mm compared to standard chassis, shock absorbers and coil springs on front and rear axles)
- Hold assist
- 3-zone automatic climate control
- Comfort key with sensor-controlled luggage compartment unlocking including electrically opening/closing luggage compartment lid
- LED matrix headlights, LED taillights and headlight cleaning system
- Assistance Package Tour in conjunction with Business
- Package: Ambient Lighting Package
- Radio accessories: Adapter cable for Audi music interface (Apple-Lightning)
- Rear view camera
- Front seat heating
- Power outlet: USB charging port for rear passengers

Brief expert findings

Documents submitted	At the time of the inspection, the vehicle registration certificate Part 2 (title) was available, but the vehicle registration certificate Part 1 (document) was not. (Copy)
VIN comparison	The vehicle identification number (VIN) was read from the vehicle and its conformity with the submitted documents was confirmed by the undersigned during the inspection.
Inspection	The inspection conditions were sufficient for the assessment of the vehicle. Lifting equipment and/or a pit were available for examining the vehicle.
Test drive	No test drive/shunting maneuver was carried out during the inspection of the vehicle.
Engine function test	An engine test run was performed.
readiness to drive	The vehicle was roadworthy at the time of inspection.

Value reducing factors

No.	Component group	Description
1	Seat - front	Seat cover - left side - Soiled - Clean
2	Door - front left side	Door - Scratch(es) - Smart repair
3	Rear bumper	Rear bumper - Scratch(es) - Repair and paint
4	Wheel / tyres	Alloy rim - rear left side - Scratched - Replace
5	Wheel / tyres	Alloy rim - rear right side - Scratched - Replace
6	Wheel / tyres	Alloy rim - front right side - Scratched - Replace
7	Vehicle glazing	Windscreen - Stone chips - Replace



Wear and tear

No.	Component group	Description
1	Side panel - rear right side	Side panel - Scratch(es) - No deduction
2	Sill - right side	Sill (Zierleiste) - Scratch(es) - No deduction
3	Wheel / tyres	Alloy rim - front left side - Scratch(es) - No deduction
4	Front bumper	Front bumper - Stone chips - No deduction
5	2nd wheel set	1 alloy rim - Scratched - No deduction

The vehicle shows signs of wear and tear commensurate with its age and use.

Order/Scope of Order

An order was placed to prepare a sales report for the described vehicle. This report includes the following:

- Description of key vehicle information
- Documentation of equipment features
(*Delivery by third-party service providers*)
- Documentation of damage, defects, missing parts
- Documentation of prior damage, unrepaired prior damage, repainting
- A brief visual or functional inspection of the equipment details, if possible.
(*Functional testing of driver assistance systems is not included in the scope of services!*)
- a photographic documentation of the vehicle

Basis for the order

This product is based on the guidelines for vehicle returns and valuations published by Alphabet Fleet GmbH. The expert makes the specific findings in each individual case objectively, within the framework of the prescribed standards, based on their own expertise.

The vehicle inspection takes place in a fully assembled, unassembled state.

Damage or defects that can only be detected during disassembly/diagnostic work or through further investigation remain within the realm of prognostic risk. An increased risk exists due to concealed defects caused by fraudulent misrepresentation and which were not identifiable by the expert.

Damage or defects resulting from normal use or wear and tear of the vehicle will be accepted in accordance with the applicable standard.

There was no explicit identification or monetary consideration of the expected features within the product.

Features which, in their nature and extent, slightly exceed normal use but do not constitute unacceptable damage, will be documented and indicated as signs of wear, if applicable.

Damage or defects that, according to the applicable standard, can no longer be attributed to normal use or wear and tear are listed under "Value Reducing Factors" in the product description.

Depending on the product specification, a monetary ID can be provided. If this takes place, the costs can be 100% d or pro rata depending on the vehicle's age and mileage.

Previous damages

No apparent prior damage that had been repaired could be found on the vehicle.

Comments

- Winterradsatz ist kein Bestandteil des Auslieferungsumfangs.



Figure 1: Diagonal front (left)



Figure 2: Diagonal front (right)



Figure 3: Diagonal rear (left)



Figure 4: Diagonal rear (right)



Figure 5: Interior - front



Figure 6: Interior - rear



Figure 7: Instrument cluster



Figure 8: Instrument panel

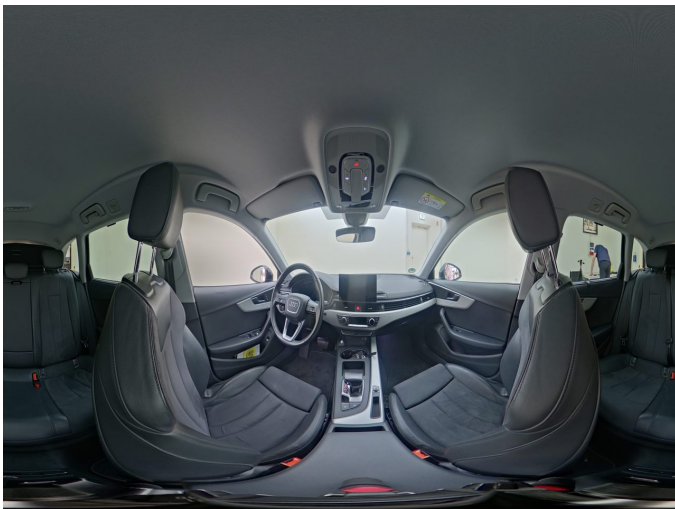


Figure 9: Interior 360° view



Figure 10: Cargo area



Figure 11: VIN



Figure 12: Mounted tyres



Figure 13: Documents



Figure 14: Documents



Figure 15: Documents



Figure 16: Documents



Figure 17: Additional tyres



Figure 18: Navigation



Figure 19: Misc.



Figure 20: Misc.



Figure 21: Misc.



Figure 22: Misc.



Figure 23: Misc.

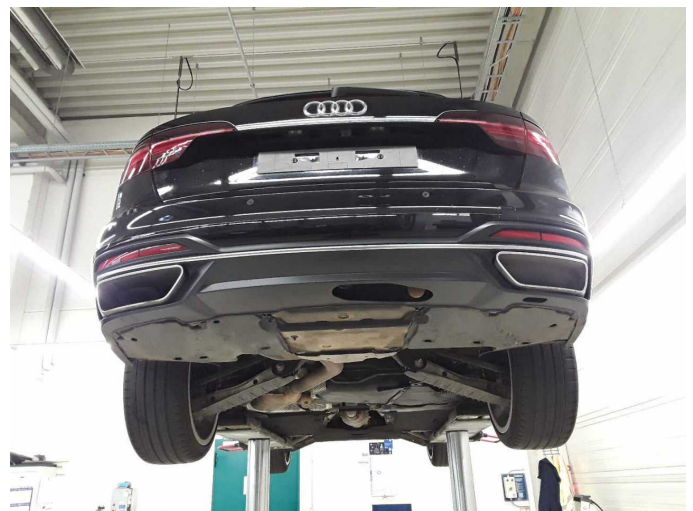


Figure 24: Misc.



Figure 25: Misc.



Figure 26: Misc.



Figure 27: Misc.



Figure 28: Misc.



Figure 29: Misc.



Figure 30: Misc.

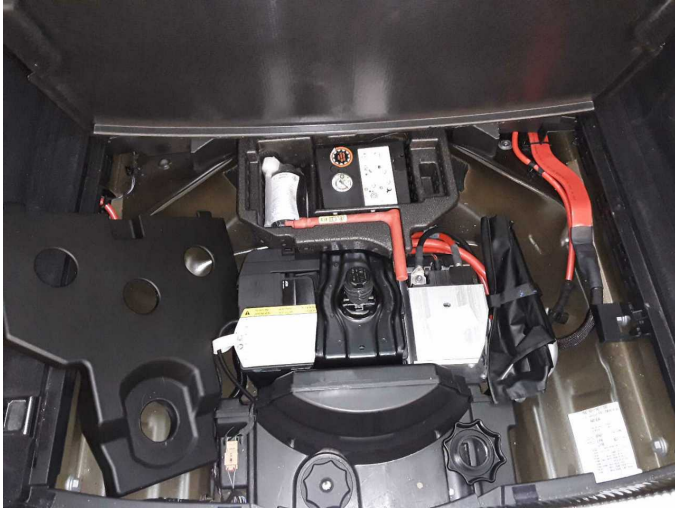
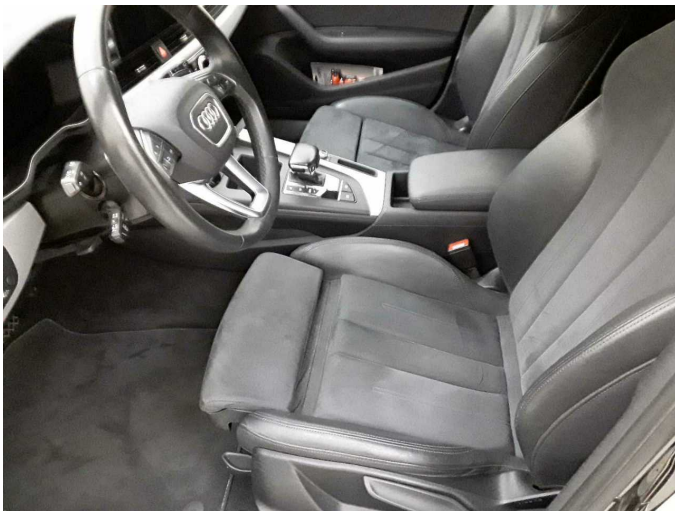


Figure 31: Misc.



Figure 32: Misc.



Damage 1: Seat - front: Seat cover - left side - Soiled - Clean



Damage 1: Seat - front: Seat cover - left side - Soiled - Clean



Damage 2: Door - front left side: Door - Scratch(es) - Smart repair



Damage 2: Door - front left side: Door - Scratch(es) - Smart repair



Damage 2: Door - front left side: Door - Scratch(es) - Smart repair



Damage 2: Door - front left side: Door - Scratch(es) - Smart repair



Damage 3: Rear bumper: Rear bumper - Scratch(es) - Repair and paint



Damage 3: Rear bumper: Rear bumper - Scratch(es) - Repair and paint



Damage 3: Rear bumper: Rear bumper - Scratch(es) - Repair and paint



Damage 3: Rear bumper: Rear bumper - Scratch(es) - Repair and paint



Damage 4: Wheel / tyres: Alloy rim - rear left side - Scratched - Replace



Damage 4: Wheel / tyres: Alloy rim - rear left side - Scratched - Replace



Damage 4: Wheel / tyres: Alloy rim - rear left side - Scratched - Replace



Damage 5: Wheel / tyres: Alloy rim - rear right side - Scratched - Replace



Damage 5: Wheel / tyres: Alloy rim - rear right side - Scratched - Replace



Damage 5: Wheel / tyres: Alloy rim - rear right side - Scratched - Replace



Damage 5: Wheel / tyres: Alloy rim - rear right side - Scratched - Replace



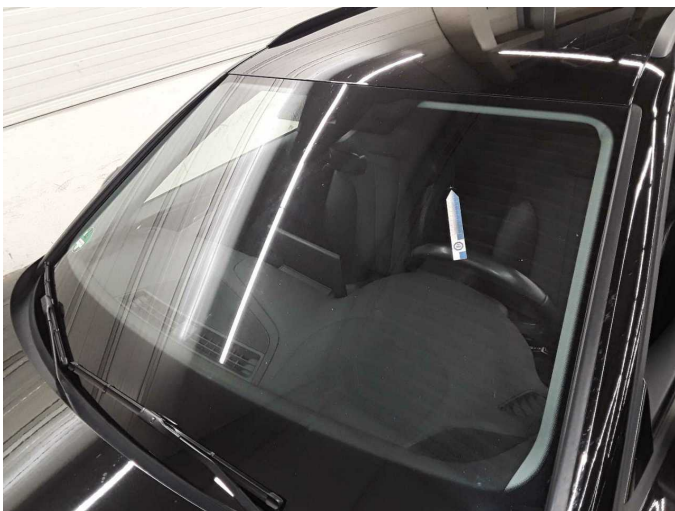
Damage 6: Wheel / tyres: Alloy rim - front right side - Scratched - Replace



Damage 6: Wheel / tyres: Alloy rim - front right side - Scratched - Replace



Damage 6: Wheel / tyres: Alloy rim - front right side - Scratched - Replace



Damage 7: Vehicle glazing: Windscreen - Stone chips - Replace



Damage 7: Vehicle glazing: Windscreen - Stone chips - Replace



Damage 7: Vehicle glazing: Windscreen - Stone chips - Replace



Wear and tear 1: Side panel - rear right side: Side panel - Scratch(es) - No deduction



Wear and tear 2: Sill - right side: Sill (Zierleiste) - Scratch(es) - No deduction



Wear and tear 3: Wheel / tyres: Alloy rim - front left side - Scratch(es) - No deduction



Wear and tear 5: 2nd wheel set: 1 alloy rim - Scratched - No deduction



Wear and tear 5: 2nd wheel set: 1 alloy rim - Scratched - No deduction

Wartungshistorie

(gemäß Auftraggeber Informationen)



Fahrgestellnummer: WAUZZZF43PA043499
Hersteller / Modell: AUDI AUDI A4 Avant 35 TDI S tronic advanced

Datum	KM-Stand	Beschreibung
15.05.2026	186.122	Getriebeöl ern/prüfen; Kraftstofffilter ern; Luftfiltereinsatz ern; Motoröl b. Wartung; Regelwartungsdienst; Reparatur Sonstiges; Wartung Sonstiges
30.01.2026	167.836	AU; Bremsbelagfühler ern; Bremse Sonstiges; Bremsklötze hinten; Bremsklötze vorne; Motoröl b. Wartung; Ölfilter ern; Ölwechsel; Wartung Sonstiges
03.11.2025	154.446	Regelwartungsdienst
19.09.2025	146.599	Motoröl b. Wartung; Ölwechsel
14.08.2025	140.490	Bremsinspektion hi
30.04.2025	122.980	Bremsbelagfühler ern; Bremse Sonstiges; Bremsklötze hinten; Bremsscheiben hinten; Getriebeöl ern/prüfen; Kraftstofffilter ern; Motoröl b. Wartung; Ölfilter ern; Regelwartungsdienst; Reparatur Sonstiges; Wartung Sonstiges
03.04.2025	117.216	Bremse Sonstiges; Bremsklötze vorne; Bremsscheiben vorne
25.11.2024	96.353	Bremsflüssigkeit; Bremsflüssigkeit ern; Motoröl b. Wartung; Ölfilter ern; Ölwechsel; Wartung Sonstiges
14.11.2024	96.353	Wartung Sonstiges
04.10.2024	91.151	Luftfiltereinsatz ern; Regelwartungsdienst; Wartung Sonstiges
07.06.2024	73.531	Motoröl b. Wartung; Ölfilter ern; Ölwechsel; Wartung Sonstiges
15.03.2024	61.363	Getriebeöl ern/prüfen; Kraftstofffilter ern; Regelwartungsdienst; Reparatur Sonstiges; Wartung Sonstiges
14.12.2023	48.022	Bremsbelagfühler ern; Bremse Sonstiges; Bremsklötze hinten; Bremsklötze vorne; Motoröl b. Wartung; Ölfilter ern; Ölwechsel; Wartung Sonstiges
24.08.2023	30.258	Regelwartungsdienst
29.06.2023	21.800	Motoröl b. Wartung; Ölfilter ern; Ölwechsel; Wartung Sonstiges