

Expertise

Protocol number: 45104238
Order No. / Reference: 26291863
Inspection date: 22 Apr 2026

Manufacturer: Ford

Model: Kuga 2.0 EcoBlue 4x4 Aut. VIGNALE

VIN: WF0FXXWPMFNM03925



Vehicle details

Manufacturer / Type / Model / Equipment

Ford Kuga 2.0 EcoBlue 4x4 Aut. VIGNALE

Vehicle Identification number WF0FXXWPMFNM03925

Mileage (Read) 56,489 km

First registration 18 Jan 2023

Number of holders 1

Next periodical technical inspection 01/2028
(Report not on hand)

Power / Engine displacement 140 kw / 1,995 ccm

Fuel type / Cylinder Diesel / 4

Gearbox / Number of gears Automatic / 8

Type of drive All-wheel drive

Type of vehicle SUV

Colour / colour code Agate Black Metallic

Doors / Seats 5 / 5

Upholstery type Artificial leather

Colour of upholstery Black



Vehicle details

| | | | |
|--|------------------------------|--------------------------------|--|
| Maintenance booklet / proof | digital proof / complete | Next maintenance in | 12 % |
| Last service on / at | 07/2024 at 30,360 km | | |
| Key is / should be | 2 / 2 | FZG documents | ZB#2 (B) was available (copy), ZB#1 (S) was not available. |
| | | Letter No. | GK852531 |
| Previous damage / Accident | Detectable | Repainting | Detectable |
| Inspection conditions | sufficient | Lifting equipment / pit | yes |
| Test drive | Not performed | Engine function test | Performed |
| Manufacturer key number/ type code number | 8566 / BTH 00154 | | |
| Emission standard | EURO6;WLTP;AP;PI/CI; M, N1 I | fine dust sticker | |
| Permitted total weight | 2,245 kg | Empty weight | |

Tyres

Mounted tyres

| # | Tyre size | Type of tyre | Manufacturer | Tread depth |
|----|-----------------|-----------------------------|--------------|-------------|
| 1) | 225/65 R17 102H | Winter tyres on Light alloy | Dunlop | 6mm / 6mm |
| 2) | 225/65 R17 102H | Winter tyres on Light alloy | Dunlop | 7mm / 7mm |

Additional tyres

| # | Tyre size | Type of tyre | Manufacturer | Tread depth |
|----|-----------------|-----------------------------|--------------|-------------|
| 1) | 225/60 R18 104V | Summer tyres on Light alloy | Continental | 5mm / 5mm |
| 2) | 225/60 R18 104V | Summer tyres on Light alloy | Continental | 6mm / 6mm |

Replacement

| Typ | Tyre size | Type of tyre | Manufacturer | Tread depth |
|---------|-----------|-------------------------|--------------|-------------|
| Tirefit | | Expiration date 07/2026 | | |

Legend: Tread depth information for the left tire is listed first, for the right tire it is listed second on the axle in the direction of travel.



Equipment

Standard equipment

- All-wheel drive
- Anti-lock braking system
- Passenger airbag deactivation
- Tires: 7.5 J x 18 alloy wheels (4) in 5x4 spoke design, Luster Nickel premium paint finish
- Fabric headliner
- Roof spoiler
- 12.3-inch digital instrument panel
- Tachometer
- Electronic Stability Program (ESP)
- Lane keeping assist including lane keeping assist
- Electric parking brake with Auto Hold function
- Ford EcoCoach
- FordPass Connect
- Luggage compartment lighting
- Transmission: 8-speed automatic
- Electric tailgate, sensor-controlled (opening and closing via foot movement)
- Interior mirror, automatically dimming
- ISOFIX mounts including top tether attachment points on the outer seats of the 2nd row.
- LED taillights
- Steering column, adjustable in height and reach
- Rear center armrest with cup holder
- MyKey key system
- Emergency brake light, pulsating illumination of the brake lights during hard braking
- Front and rear parking pilot system
- Post-Collision Assist
- Pre-Collision Assist
- Wheel arch trim painted in vehicle color
- Rear view camera
- Headlights with delayed shut-off
- Side windows from the 2nd row of seats and rear window, dark tinted.
- Seats: Rear seat, sliding, with split folding backrest
- Seats: Front sports seats with integrated headrest
- Sun visor on driver and passenger side
- Static LED headlights
- Carpet floor mats front and rear
- Immobiliser
- Ambient lighting
- Electrically adjustable, heated and folding exterior mirrors (VIGNALE)
- Tires: Tire repair kit
- third brake light
- Roof rails, silver
- Diesel particulate filter
- Dual exhaust system
- Front door sill trims, Vignale design
- Driving mode switch selective
- Electric windows front and rear
- Ford Easy Fuel
- Ford Power Start Function & Ford Key Free System
- Luggage compartment cover, roller blind, removable
- Cruise control
- Illuminated glove compartment
- Heated rear window
- rear window wiper
- Intelligent Protection System (IPS)
- Air conditioning with automatic temperature control
- Front and rear headrests (5) height adjustable
- Steering wheel: Steering wheel, 3-spoke design, in Sensico synthetic leather
- Front center console with integrated armrest
- Navigation system: Ford navigation system including Ford SYNC 3
- Package: Winter II
- Upholstery: Premium Sensico upholstery in leather look with leather seat center panels
- Radio accessories: B&O Sound System
- Tire Pressure Monitoring System (TPMS)
- Windscreen wipers with rain sensor
- Headlight assistant with day/night sensor
- Power steering
- Seats: Map pockets on the driver's and front passenger's seat backrests
- Seats: Front seats, individually and variably heated
- Start-stop system
- Power outlet: 12-volt connection in the luggage compartment
- Central locking with remote control and remote luggage compartment release

Extra equipment



- Mounting points behind the first and second row of seats according to ISO 27955, (required for the installation of the safety partition available as an accessory from your participating Ford dealer)
- Package: Technology (Adaptive LED headlights with glare-free high beam assist and dynamic cornering lights, automatic headlight range control and LED fog lights - Head-up display)
- Paint finish: Agate Black Metallic
- Safety partition net (including attachment points behind the first and second rows of seats)
- Package: Driver Assistance Package (Automatic Transmission) (Intelligent Adaptive Cruise Control with Traffic Sign Recognition System - Traffic Jam Assist with Stop&Go Function and Lane Keeping Assist - Wrong-Way Driver Warning System - Evasive Steering Assist - Driver Drowsiness Detection - Pre-Collision Assist including Forward Collision Warning System with Cross Traffic Alert - Blind Spot Assist with Emergency Braking Function and Trailer Detection - Active Park Assist with Parking Assist and Semi-Autonomous Vehicle Steering - Front Camera with Split View - Door Edge Protectors - Intelligent Speed Limiter with Speed Limit Display)

Brief expert findings

| | |
|----------------------|--|
| Documents submitted | At the time of the inspection, the vehicle registration certificate Part 2 (title) was available, but the vehicle registration certificate Part 1 (document) was not. (Copy) |
| VIN comparison | The vehicle identification number (VIN) was read from the vehicle and its conformity with the submitted documents was confirmed by the undersigned during the inspection. |
| Inspection | The inspection conditions were sufficient for the assessment of the vehicle. Lifting equipment and/or a pit were available for examining the vehicle. |
| Test drive | No test drive/shunting maneuver was carried out during the inspection of the vehicle. |
| Engine function test | An engine test run was performed. |

Value reducing factors

| No. | Component group | Description |
|-----|-----------------------|--|
| 1 | Boot lid / rear door | Boot lid - Glued / labelled - De-glue / neutralise |
| 2 | Roof | Roof - dent(s) - Smooth repair work |
| 3 | Door - rear left side | Door (Auspolieren) - Scratch(es) - Smart repair |
| 4 | Mudguard - right side | Wheel well extension - Scratched - Smart repair |
| 5 | Rear bumper | Rear bumper - Scratched - Smart repair |

Previous damages

| No. | Previous damage | Extent of damage (Net) |
|-----|---|------------------------|
| 1 | Front, Side - left, Provided by user / customer, from 28 Feb 2025 | 5.012,77 € |
| 2 | Front, Side - left, Provided by user / customer, from 20 Jan 2024 | 7.167,53 € |

Repainting

| No. | Repainting |
|-----|------------------------|
| 1 | Door - front left side |

Paint coat thickness measurement

| | |
|------------------------|--------|
| Door - front left side | 154 µm |
|------------------------|--------|



Order/Scope of Order

An order was placed to prepare a sales report for the described vehicle. This report includes the following:

- Description of key vehicle information
- Documentation of equipment features
(Delivery by third-party service providers)
- Documentation of damage, defects, missing parts
- Documentation of prior damage, unrepaired prior damage, repainting
- A brief visual or functional inspection of the equipment details, if possible.
(Functional testing of driver assistance systems is not included in the scope of services!)
- a photographic documentation of the vehicle

Basis for the order

This product is based on the guidelines for vehicle returns and valuations published by Alphabet Fleet GmbH. The expert makes the specific findings in each individual case objectively, within the framework of the prescribed standards, based on their own expertise.

The vehicle inspection takes place in a fully assembled, unassembled state.

Damage or defects that can only be detected during disassembly/diagnostic work or through further investigation remain within the realm of prognostic risk. An increased risk exists due to concealed defects caused by fraudulent misrepresentation and which were not identifiable by the expert.

Damage or defects resulting from normal use or wear and tear of the vehicle will be accepted in accordance with the applicable standard.

There was no explicit identification or monetary consideration of the expected features within the product.

Features which, in their nature and extent, slightly exceed normal use but do not constitute unacceptable damage, will be documented and indicated as signs of wear, if applicable.

Damage or defects that, according to the applicable standard, can no longer be attributed to normal use or wear and tear are listed under "Value Reducing Factors" in the product description.

Depending on the product specification, a monetary ID can be provided. If this takes place, the costs can be 100% d or pro rata depending on the vehicle's age and mileage.

Previous damages

According to available information previous damages were repaired at the vehicle. Traces of repairs, which allow conclusions about the area of repair, were not recognizable during the inspection.



Figure 1: Diagonal front (left)



Figure 2: Diagonal front (right)



Figure 3: Diagonal rear (left)



Figure 4: Diagonal rear (right)



Figure 5: Interior - front

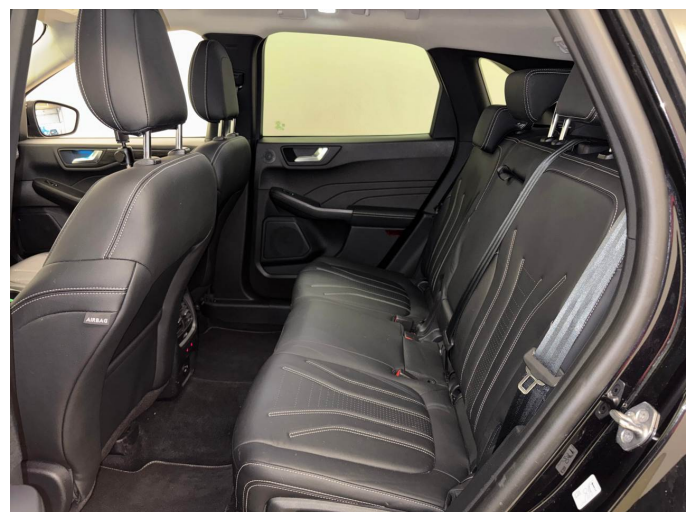


Figure 6: Interior - rear



Figure 7: Instrument cluster



Figure 8: Instrument panel



Figure 9: Interior 360° view



Figure 10: Cargo area

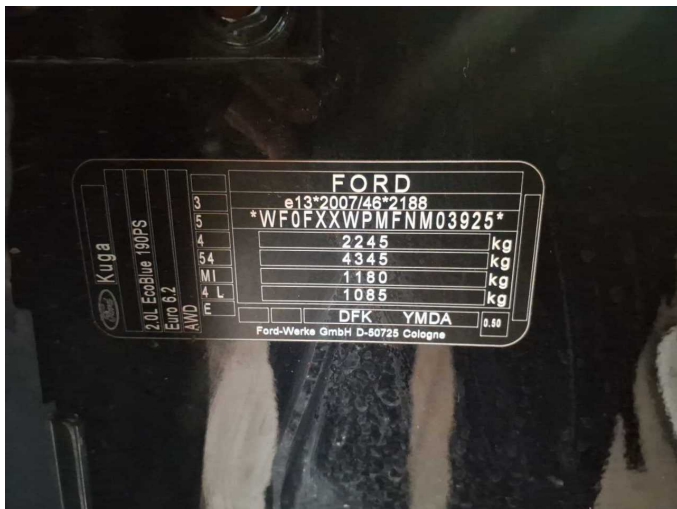


Figure 11: VIN



Figure 12: Mounted tyres

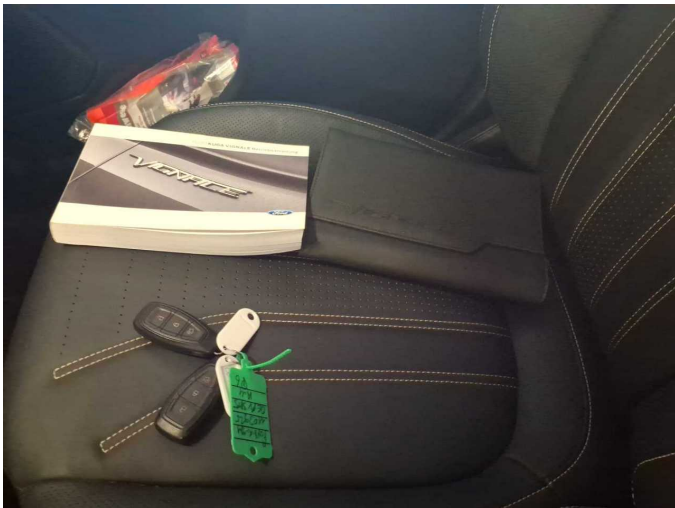


Figure 13: Documents

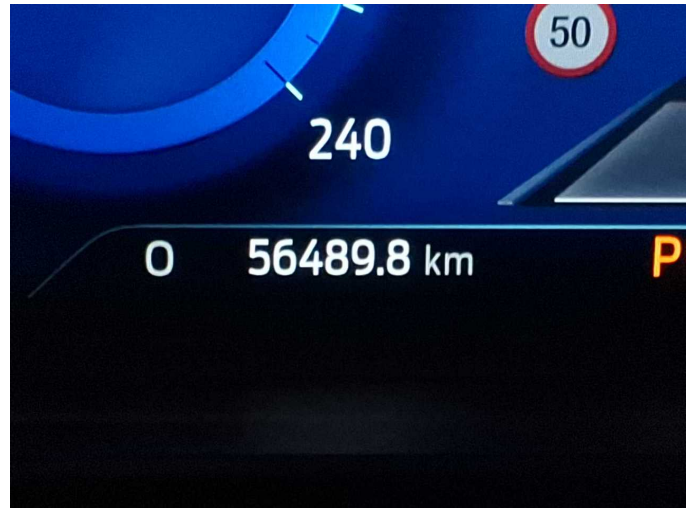


Figure 14: Documents



Figure 15: Documents



Figure 16: Additional tyres



Figure 17: Navigation



Figure 18: Misc.

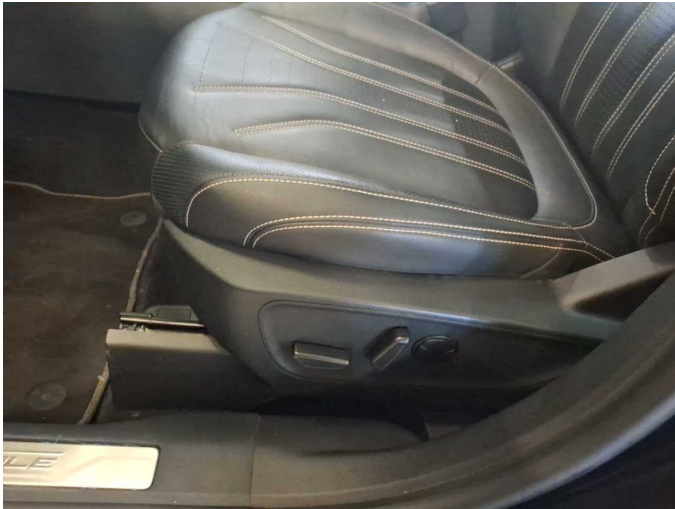


Figure 19: Misc.



Figure 20: Misc.



Figure 21: Misc.



Figure 22: Misc.



Figure 23: Misc.

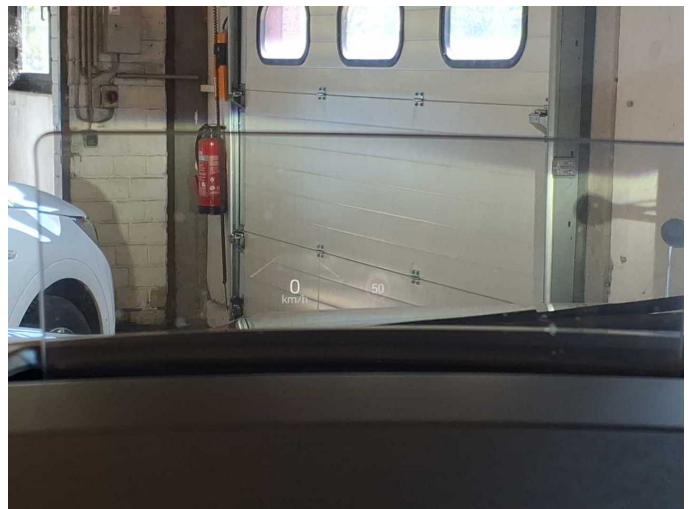


Figure 24: Misc.



Figure 25: Misc.



Figure 26: Misc.



Figure 27: Misc.



Figure 28: Misc.



Figure 29: Misc.



Figure 30: Misc.



Figure 31: Misc.



Figure 32: Misc.

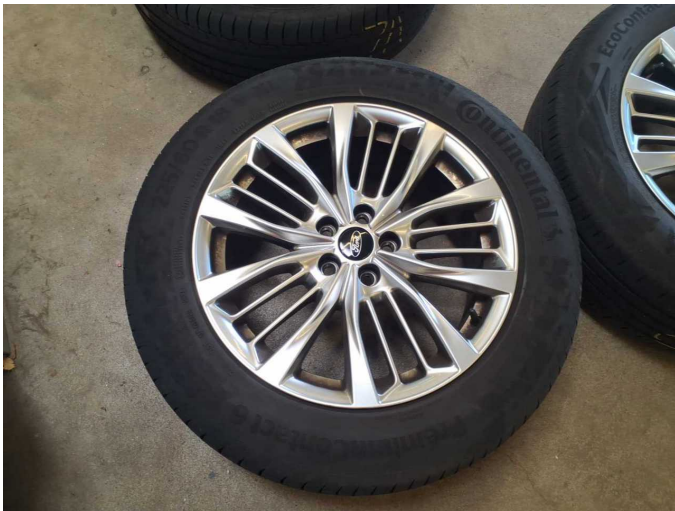


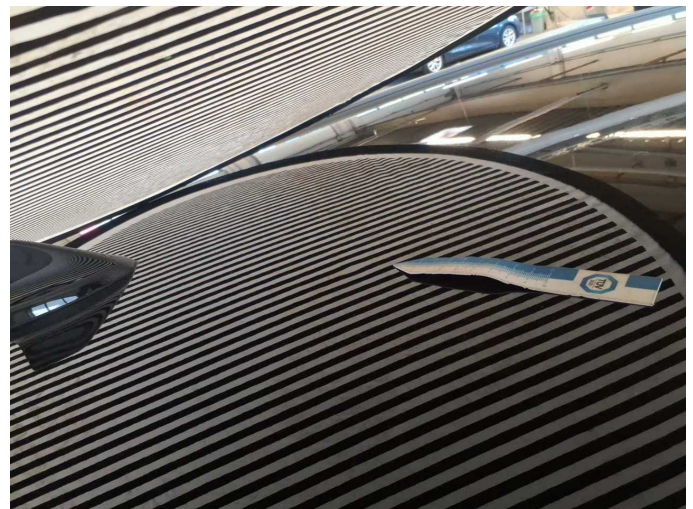
Figure 33: Misc.



Figure 34: Misc.



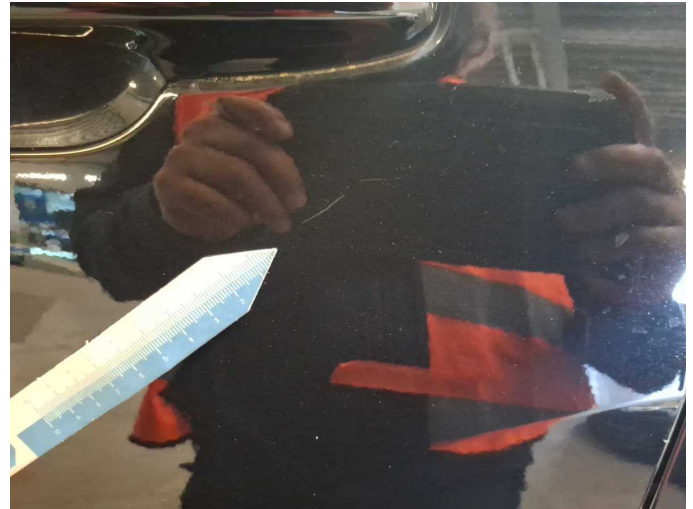
Damage 1: Boot lid / rear door: Boot lid - Glued / labelled - De-glu / neutralise



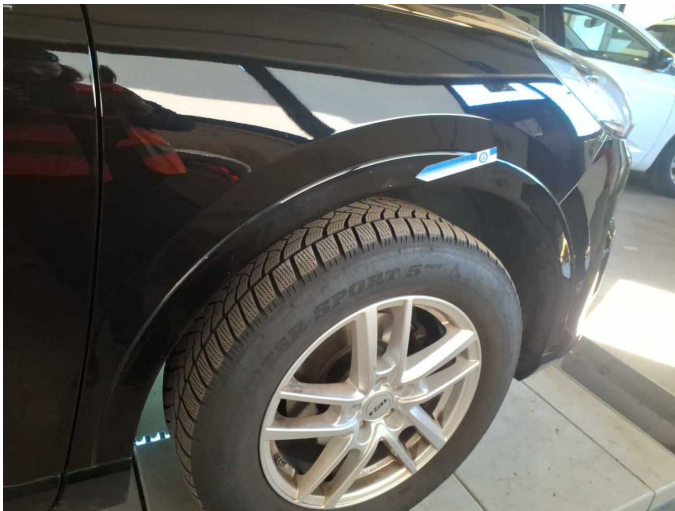
Damage 2: Roof: Roof - dent(s) - Smooth repair work



Damage 3: Door - rear left side: Door (Auspolieren) - Scratch(es) - Smart repair



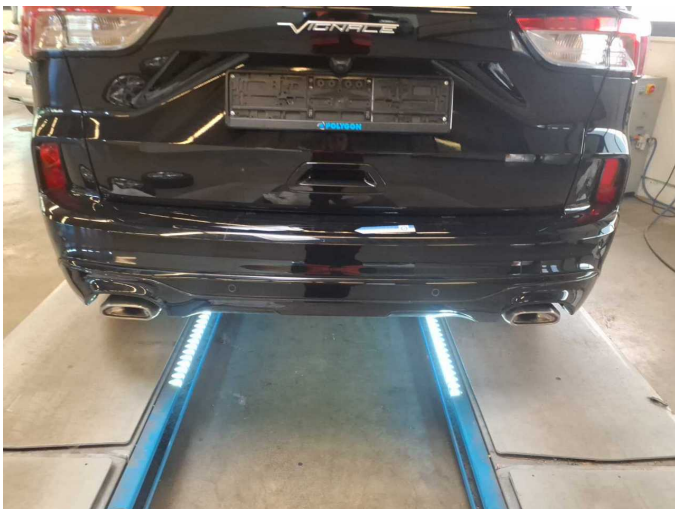
Damage 3: Door - rear left side: Door (Auspolieren) - Scratch(es) - Smart repair



Damage 4: Mudguard - right side: Wheel well extension - Scratched - Smart repair



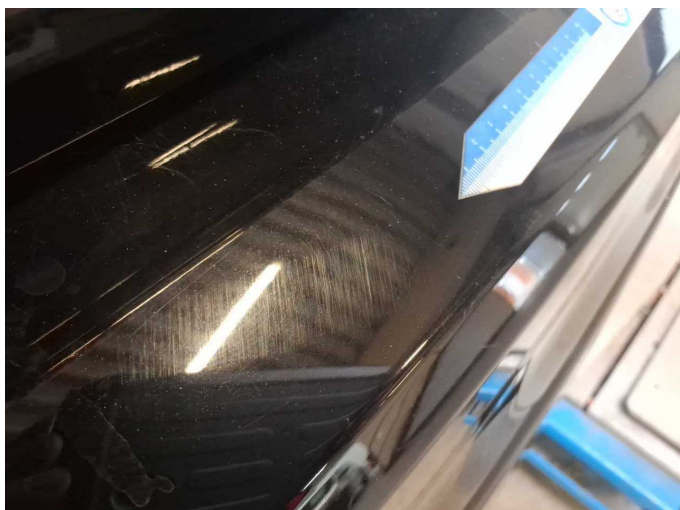
Damage 4: Mudguard - right side: Wheel well extension - Scratched - Smart repair



Damage 5: Rear bumper: Rear bumper - Scratched - Smart repair



Damage 5: Rear bumper: Rear bumper - Scratched - Smart repair



Damage 5: Rear bumper: Rear bumper - Scratched - Smart repair



Repainting 1: Door - front left side



Repainting 1: Door - front left side



Wartungshistorie

(gemäß Auftraggeber Informationen)

Fahrgestellnummer: WF0FXXWPMFNM03925

Hersteller / Modell: FORD FORD Kuga 2.0 EcoBlue 4x4 Aut. VIGNALE

| Datum | KM-Stand | Beschreibung |
|------------|----------|--|
| 16.01.2026 | 53.094 | AU; Bremse Sonstiges; Bremsklötze hinten; Bremsklötze vorne; Bremsscheiben+Beläge v+h; Bremsscheiben hinten; Bremsscheiben vorne |
| 18.07.2024 | 30.360 | Bremsklötze hinten; Motoröl b. Wartung; Ölfilter ern; Regelwartungsdienst; Wartung Sonstiges |