

Expertise

Protocol number: 46179385
Order No. / Reference: 26584771
Inspection date: 26 Jun 2026

Manufacturer: Ford

Model: Mustang Mach-E

VIN: WF0TK1E78NMA62930



Vehicle details

Manufacturer / Type / Model / Equipment

Ford Mustang Mach-E

Vehicle Identification number WF0TK1E78NMA62930

Mileage (Read) 124,344 km

First registration 20 Feb 2023

Number of holders 1

Power / Engine displacement 100 kw /

Fuel type / Cylinder Electric / 0

Gearbox / Number of gears Direct drive / 1

Type of drive Rear drive

Type of vehicle Saloon car

Colour / colour code Dark-Matter Grey

Doors / Seats 5 / 5

Upholstery type Artificial leather

Colour of upholstery Black-Anthracite



Vehicle details

| | | | |
|--|--------------------------------|--------------------------------|--|
| Maintenance booklet / proof | digital proof / complete | Next maintenance in | |
| Last service on / at | 03/2025 at 81,938 km | | |
| Key is / should be | 2 / 2 | FZG documents | ZB#2 (B) was available (copy), ZB#1 (S) was not available. |
| | | Letter No. | GT878520 |
| Previous damage / Accident | Detectable | Repainting | Detectable |
| Inspection conditions | sufficient | Lifting equipment / pit | yes |
| Test drive | Not performed | Engine function test | Performed |
| Manufacturer key number/ type code number | 8566 / BVE 00010 | | |
| Emission standard | 2017/1151;WLTP;reine Elektrofz | fine dust sticker | |
| Permitted total weight | 2,605 kg | Empty weight | |

Tyres

Mounted tyres

| # | Tyre size | Type of tyre | Manufacturer | Tread depth |
|----|-----------------|-----------------------------|--------------|-------------|
| 1) | 225/60 R18 104V | Summer tyres on Light alloy | Continental | 3mm / 3mm |
| 2) | 225/60 R18 104V | Summer tyres on Light alloy | Continental | 3mm / 3mm |

Legend: Tread depth information for the left tire is listed first, for the right tire it is listed second on the axle in the direction of travel.



Equipment

Standard equipment

- Acoustic Vehicle Alerting System (AVAS)
- Anti-lock braking system (ABS)
- Electrically adjustable and heated exterior mirrors
- Tires: 7 J x 18 light alloy wheels (4) in 5-spoke design
- third brake light
- Theft alarm system
- Driver information system with digital instrument panel, 10.2" screen diagonal (25.9 cm)
- High Beam Assist
- Ford Co-Pilot360 incl. Ford Intelligent Drive Assist
- FordPass Connect including eCall, live traffic information and Wi-Fi hotspot
- Flexible luggage compartment cover and luggage compartment lighting
- rear window wiper
- Interior mirror, automatically dimming
- Intelligent Protection System (IPS)
- Air conditioning with automatic temperature control
- Rear headrests (3) height adjustable
- Charging cables: 2 charging cables for charging the high-voltage battery
- Illuminated makeup mirrors in the driver's and passenger's sun visors
- Rear center armrest with two cup holders
- Mustang LED taillights
- Fatigue warning
- One Pedal Drive
- Front and rear parking pilot system
- Pollen and dust filter
- Radio: Ford SYNC 4A audio system with digital radio reception DAB/DAB+, touchscreen and navigation
- Windscreen wipers with rain sensor
- Side windows from the 2nd row of seats and rear window, dark tinted.
- Seat: Rear seat backrests, foldable, 60:40 split
- Seats: Driver and front passenger seats, 6-way manually adjustable
- Pocket on the driver's and passenger's seat backrest
- Telephone: Inductive charging station for mobile devices
- Electric door child safety lock
- Lashing eyes in the luggage compartment
- Central locking system with overall locking function
- Towbar preparation kit
- Electrically folding exterior mirrors
- Exterior mirrors in contrasting black color
- Tires: Tire repair kit
- Light-colored woven fabric headliner
- Electronic Stability Program (ESP)
- Electric front and rear windows with all-around closing function
- Electric parking brake with auto hold function
- Ford EcoCoach
- Front trunk with Ford MegaBox
- Heated windshield
- Transmission: 1-speed direct drive
- Heated rear window
- Rear spoiler
- Intelligent Range
- ISOFIX mounts including top tether attachment points on the outer seats of the 2nd row.
- Front headrests are height-adjustable
- LED headlights in projection lens design
- Steering wheel: Sensico steering wheel in leather look, heated
- Media console with two USB ports at the front and two USB charging ports at the rear of the center console.
- MyKey key system
- Emergency brake light, pulsating illumination of the brake lights during hard braking
- Standard design pedal assembly
- Post-Collision Assist
- Tire Pressure Monitoring System (TPMS)
- Reversing camera with reversing parking assistant
- Keys: Two classic car keys and up to 4 digital keys (Phone as a Key)
- Power steering
- Seats: Front seats, individually and variably heated
- Seats: Comfort seats, front
- Power outlet: 12-volt connection in the luggage compartment
- Carpet floor mats front and rear, velour
- Traffic sign recognition system
- Immobiliser

Extra equipment

- Paint finish: Metallic
- Package: Technology Package+ (B&O Sound System - Electric, sensor-controlled tailgate - Premium Sensico upholstery in leather look, perforated, in black with grey decorative stitching - Front seats, 8-way electrically adjustable, with adjustable lumbar support and memory function)



Brief expert findings

| | |
|----------------------|--|
| Documents submitted | At the time of the inspection, the vehicle registration certificate Part 2 (title) was available, but the vehicle registration certificate Part 1 (document) was not. (Copy) |
| VIN comparison | The vehicle identification number (VIN) was read from the vehicle and its conformity with the submitted documents was confirmed by the undersigned during the inspection. |
| Inspection | The inspection conditions were sufficient for the assessment of the vehicle. Lifting equipment and/or a pit were available for examining the vehicle. |
| Test drive | No test drive/shunting maneuver was carried out during the inspection of the vehicle. |
| Engine function test | An engine test run was performed. |

Value reducing factors

| No. | Component group | Description |
|-----|-----------------|------------------------------|
| 1 | Bonnet | Bonnet - Scratch(es) - Paint |

Wear and tear

| No. | Component group | Description |
|-----|-----------------|---|
| 1 | Vehicle glazing | Windscreen - Stone chips - No deduction |
| 2 | Front bumper | Front bumper - Stone chips - No deduction |

The vehicle shows signs of wear and tear commensurate with its age and use.

Previous damages

| No. | Previous damage | Extent of damage (Net) |
|-----|--|------------------------|
| 1 | Front, Provided by user / customer, from 22 Nov 2024 | 2.394,88 € |
| 2 | Side right, Professionally repaired, Invoice of repair done Non-existent | |

Repainting

| No. | Repainting |
|-----|---|
| 1 | Mudguard - right side, Door - rear right side, Door - front right side, Professionally carried out, Invoice of repair done Non-existent |

Order/Scope of Order

An order was placed to prepare a sales report for the described vehicle. This report includes the following:

- Description of key vehicle information
- Documentation of equipment features
(*Delivery by third-party service providers*)
- Documentation of damage, defects, missing parts
- Documentation of prior damage, unrepaired prior damage, repainting
- A brief visual or functional inspection of the equipment details, if possible.
(*Functional testing of driver assistance systems is not included in the scope of services!*)
- a photographic documentation of the vehicle



Basis for the order

This product is based on the guidelines for vehicle returns and valuations published by Alphabet Fleet GmbH. The expert makes the specific findings in each individual case objectively, within the framework of the prescribed standards, based on their own expertise.

The vehicle inspection takes place in a fully assembled, unassembled state.

Damage or defects that can only be detected during disassembly/diagnostic work or through further investigation remain within the realm of prognostic risk. An increased risk exists due to concealed defects caused by fraudulent misrepresentation and which were not identifiable by the expert.

Damage or defects resulting from normal use or wear and tear of the vehicle will be accepted in accordance with the applicable standard.

There was no explicit identification or monetary consideration of the expected features within the product.

Features which, in their nature and extent, slightly exceed normal use but do not constitute unacceptable damage, will be documented and indicated as signs of wear, if applicable.

Damage or defects that, according to the applicable standard, can no longer be attributed to normal use or wear and tear are listed under "Value Reducing Factors" in the product description.

Depending on the product specification, a monetary ID can be provided. If this takes place, the costs can be 100% d or pro rata depending on the vehicle's age and mileage.

Previous damages

Professionally repaired previous damages were found at the vehicle.

Comments

Wartungshistorie gemäß Auftraggeber Informationen.

-Wartung lässt sich nicht abfragen.



Figure 1: Diagonal front (left)



Figure 2: Diagonal front (right)



Figure 3: Diagonal rear (left)



Figure 4: Diagonal rear (right)



Figure 5: Interior - front



Figure 6: Interior - rear



Figure 7: Instrument cluster



Figure 8: Instrument panel



Figure 9: Interior 360° view



Figure 10: Cargo area



Figure 11: Cargo area



Figure 12: VIN



Figure 13: Mounted tyres



Figure 14: Documents



Figure 15: Navigation



Figure 16: Misc.



Figure 17: Misc.



Figure 18: Misc.



Figure 19: Misc.



Figure 20: Misc.

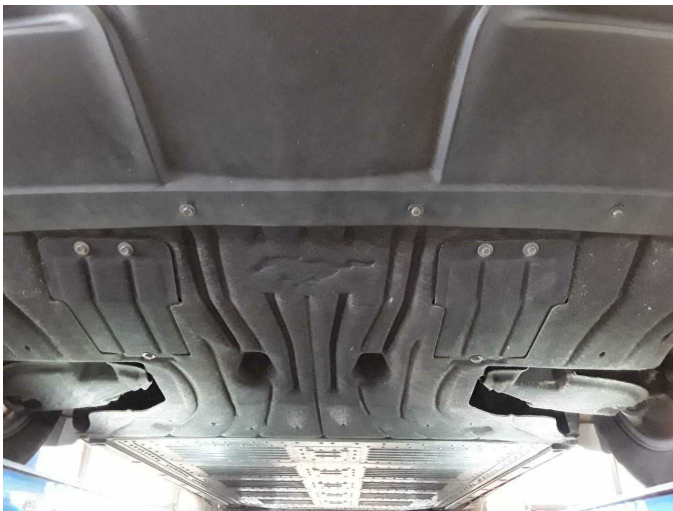


Figure 21: Misc.



Figure 22: Misc.



Figure 23: Misc.



Figure 24: Misc.



Figure 25: Misc.



Figure 26: Misc.



Figure 27: Misc.



Figure 28: Misc.



Figure 29: Misc.



Figure 30: Misc.



Figure 31: Misc.



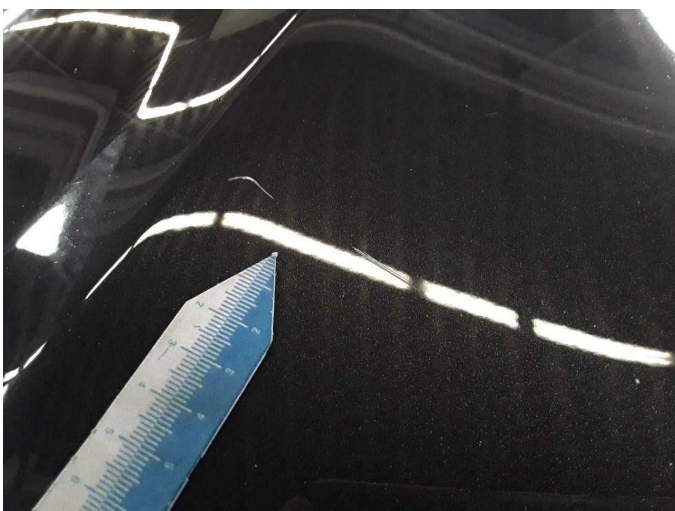
Figure 32: Misc.



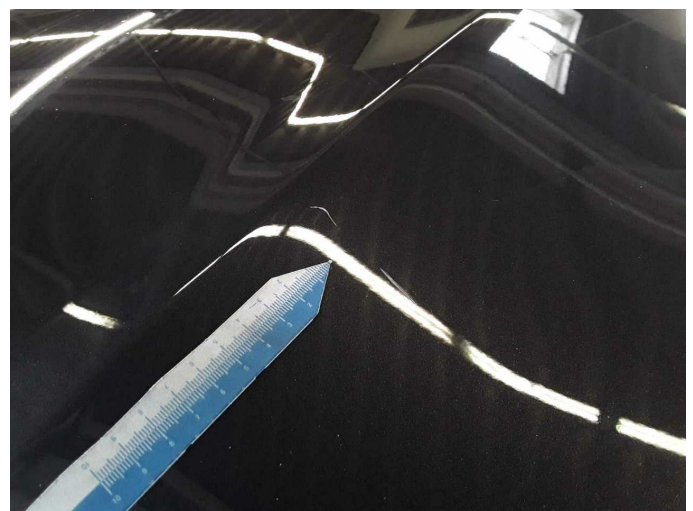
Figure 33: Misc.



Damage 1: Bonnet: Bonnet - Scratch(es) - Paint



Damage 1: Bonnet: Bonnet - Scratch(es) - Paint



Damage 1: Bonnet: Bonnet - Scratch(es) - Paint



Repainting 1: Mudguard - right side, Door - rear right side, Door - front right side



Repainting 1: Mudguard - right side, Door - rear right side, Door - front right side



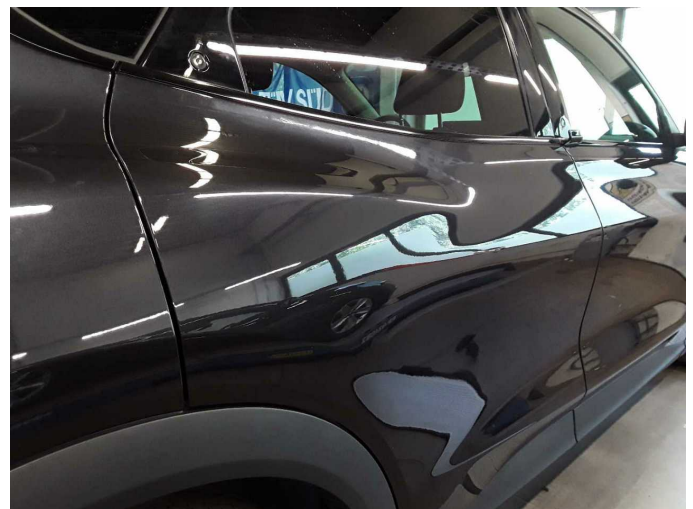
Repainting 1: Mudguard - right side, Door - rear right side, Door - front right side



Repainting 1: Mudguard - right side, Door - rear right side, Door - front right side



Repainting 1: Mudguard - right side, Door - rear right side, Door - front right side



Repainting 1: Mudguard - right side, Door - rear right side, Door - front right side



Wartungshistorie

(gemäß Auftraggeber Informationen)

Fahrgestellnummer: WF0TK1E78NMA62930

Hersteller / Modell: FORD FORD Mustang Mach-E

| Datum | KM-Stand | Beschreibung |
|------------|----------|---|
| 03.03.2025 | 81.938 | Bremsflüssigkeit; Bremsflüssigkeit ern; Regelwartungsdienst |