

Expertise

Protocol number: 46054429
Order No. / Reference: 26059878
Inspection date: 19 Jun 2026

Manufacturer: Mercedes-Benz

Model: V 300 d lang 4Matic 9G-TRONIC Avantgarde Edition 2023

VIN: W1VVKSZ5P4286714



Vehicle details

Manufacturer / Type / Model / Equipment

Mercedes-Benz V 300 d lang 4Matic 9G-TRONIC Avantgarde Edition 2023

Vehicle Identification number W1VVKSZ5P4286714

Mileage (Read) 72,202 km

First registration 20 Jul 2023

Number of holders 1

Power / Engine displacement 174 kw / 1,950 ccm

Fuel type / Cylinder Diesel / 4

Gearbox / Number of gears Automatic / 9

Type of drive All-wheel drive

Type of vehicle Van

Colour / colour code Grafitgrau Dunkel

Doors / Seats 5 / 7

Upholstery type Leather

Colour of upholstery Black-Anthracite



Vehicle details

Maintenance booklet / proof	digital evidence / incomplete	Next maintenance in	-2,500 km
Last service on / at	01/2025 at 33,442 km		
Key is / should be	2 / 2	FZG documents	ZB#2 (B) was available (copy), ZB#1 (S) was not available.
		Letter No.	GX057910
Previous damage / Accident	Detectable	Repainting	Detectable
Inspection conditions	sufficient	Lifting equipment / pit	yes
Test drive	Not performed	Engine function test	Performed
Manufacturer key number/ type code number	2222 / BBV 01631		
Emission standard	EURO6;WLTP;AP;PI/CI; M, N1 I	fine dust sticker	
Permitted total weight	3,100 kg	Empty weight	

Tyres

Mounted tyres

#	Tyre size	Type of tyre	Manufacturer	Tread depth
1)	245/45 R19 102Y	Summer tyres on Light alloy	Continental	4mm / 4mm
2)	245/45 R19 102Y	Summer tyres on Light alloy	Continental	4mm / 4mm

Additional tyres

#	Tyre size	Type of tyre	Manufacturer	Tread depth
1)	235/55 R17 103V	All-season tyres on Light alloy	Michelin	5mm / 5mm
2)	235/55 R17 103V	All-season tyres on Light alloy	Michelin	4mm / 4mm

Legend: Tread depth information for the left tire is listed first, for the right tire it is listed second on the axle in the direction of travel.

TÜV SÜD Auto Partner GmbH
Wiesenring 2
04159 Leipzig

Inspection location
Hartmann Compound Professionals
Arnoldschacht 9-11
44894 Bochum



Equipment



Standard equipment

- Exhaust gas purification SCR Generation 4
- ADAPTIVE BRAKE with dry braking in wet conditions and hill start assist
- Driver airbag
- Airbag: Windowbag for driver and front passenger
- 4MATIC all-wheel drive
- Ambient lighting in the cockpit
- Armrests for seating in the passenger compartment
- Attention Assistant
- Heated exterior mirrors (left and right), electrically adjustable from inside
- Illuminated mirrors for sun visor
- Lighting in the rear grab handle with reading light
- BlueEFFICIENCY package
- Diesel particulate filter
- Display: 26 cm (10.25") HD touch display
- Third brake light
- Electrical components for trailer socket
- Driving light assistant
- Front left window, fixed in side wall/sliding door
- Electric window regulator comfort front/front.
- electric parking brake
- Generator 14 V / 250 A
- Generator management
- Seatbelt warning device for front passenger seat
- Grab handle for entry
- Lockable and illuminated glove compartment
- Mechanical child safety lock in the sliding doors
- TEMPMATIC automatic climate control in the rear
- THERMOTRONIC automatic climate control with 2 zones
- Comfort roof control unit
- Communication module (LTE) for digital services
- Front headrests
- LED Intelligent Light System
- Steering wheel: Multifunction steering wheel with trip computer
- trunk light
- Mercedes-Benz emergency call system
- Navigation accessories: Pre-installation for navigation
- Package: Aerodynamics
- Package: Assistance
- Package: Parking package with 360° camera
- Package: Mirror Package
- Upholstery: Lugano leather
- Radio accessories: Digital radio (DAB)
- Radio: MBUX multimedia system Mid
- Wheels: Comfort tires
- Windscreen wipers with rain sensor
- Sliding door, right
- Sliding door: electric operation for right-hand sliding door
- Crosswind Assist
- Screw-in towing eye front/rear
- Adaptive brake light flashing
- Passenger airbag
- Airbag: Thorax-pelvis sidebags for driver and front passenger
- Ambient lighting
- Outer armrests for individual seats, 2nd rear row
- Increased gross vehicle weight to 3,100 kg
- Exit lights in the side doors
- Outdoor temperature display
- Battery: fleece battery 12 V / 92 Ah
- Front footwell lighting
- Hill start assist
- Tinted rear windows, black glass
- Direct steering
- Tachometer
- ECO start/stop function
- Electronic Stability Program (ESP)
- Vehicle key: Electronic key in chrome look
- Front right window, fixed in side wall/sliding door
- High Beam Assist Plus
- Velour floor mats for driver and front passenger, AMG design
- Transmission: 9-speed automatic, 9G-TRONIC
- Seatbelt warning device for driver's seat
- Grab handle in the rear
- ISOFIX child seat attachment points in the rear and Top Tether attachment points on the back of the rear seat backrest
- Instrument cluster with color display
- Convenient opening and closing with IR radio remote control
- Paint finish: Metallic
- leather steering wheel
- Steering column mechanically adjustable in height and length
- Headlight range control
- Center console with roller blind
- Navigation: Navigation including live traffic information
- Package: AMG Line (4Matic)
- Package: Interior lighting package
- Package: Seat Comfort Package
- Breakdown management
- Radio accessories: Burmester surround sound system
- Radio accessories: Media interface cable kit
- Tire pressure monitoring
- Disc brakes on front and rear axles
- Sliding door - left side
- Sliding door: electric operation for left-hand sliding door
- Illuminated "Mercedes-Benz" lettering on the entrance
- Separately opening rear window
- 3-point seat belts
- Seat: Single seat, 1st rear row, right
- Seat: Single seat, 2nd rear row, right
- Seat: Comfort driver's seat



- electric power steering
- Seat: Single seat, 1st rear row, left
- Seat: Single seat, 2nd rear row, left
- Seat: Comfort passenger seat
- Seats: Seat rail system with quick-release fasteners
- Heated driver's seat
- Storage net for driver's seat backrest
- 12V socket
- 12V socket in the trunk/cargo area
- Bumpers and attachments painted in body color
- Cruise control and variable speed limiter SPEEDTRONIC
- Carpet in the rear
- Ambient lighting tailgate
- Traffic Sign Assistant
- Warm air duct to the passenger compartment
- Maintenance interval indicator "ASSYST"
- Heat-insulating glass all around

Extra equipment

- Active Distance Assist DISTRONIC (accelerates independently and brakes with a maximum of half braking power - can be activated by operating the cruise control lever from a speed of 20 km/h - operates in a speed range of 0 to 200 km/h - incl. Active Brake Assist and HOLD function)
- Interior headliner in black fabric
- Package: Night package in conjunction with AMG Line package (exterior mirrors painted in black - AMG front bumper with trim elements in black - radiator grille painted in black - beltline trim strip in black anodized)
- Projection brand logo
- Wheels: AMG light-alloy wheels 8 J x 19 black
- Seat: Lumbar support driver's seat
- Hot water auxiliary heater with parking heater function

- Passenger seat heating
- Storage net on the passenger seat backrest
- Storage nets on the backrests of the individual seats in the rear
- 12V power outlets for the rear seat rows, right and left
- Phone accessories: Smartphone integration
- Carpet for vehicle interior front
- Touchpad
- First aid kit
- Pre-installation for Remote Services Plus
- Warning triangle
- Electronic immobilizer

- AMG spoiler edge
- Electric vent windows in the rear passenger compartment (left and right in the passenger compartment)
- Chassis: AIRMATIC (with adaptive damping system (ADS) and all-round level control)
- Windscreen washer system heater
- Fuel tank with larger volume 70 l
- Package: Table package (folding table - 2 cupholders attachable to rear armrests - 12V sockets for rear seat rows right and left - storage net driver's seat backrest - storage net passenger seat backrest - storage nets on backrests of individual rear seats)
- Seat: Lumbar support, passenger seat
- Seats: 3-seater comfort bench seat, 2nd row (with folding outer seat)

Brief expert findings

Documents submitted	At the time of the inspection, the vehicle registration certificate Part 2 (title) was available, but the vehicle registration certificate Part 1 (document) was not. (Copy)
VIN comparison	The vehicle identification number (VIN) was read from the vehicle and its conformity with the submitted documents was confirmed by the undersigned during the inspection.
Inspection	The inspection conditions were sufficient for the assessment of the vehicle. Lifting equipment and/or a pit were available for examining the vehicle.
Test drive	No test drive/shunting maneuver was carried out during the inspection of the vehicle.
Engine function test	An engine test run was performed.



Value reducing factors

No.	Component group	Description
1	Front bumper	Front bumper - Scratch(es) - Smart repair
2	Wheel / tyres	Alloy rim - front right side - Scratch(es) - Loss in value
3	Wheel / tyres	Alloy rim - front right side - Scratched - Loss in value
4	Misc.	Inspection / maintenance - Due - Perform
5	Rear bumper	Rear bumper - Dent / paintcoat damage - Repair and paint
6	Door - rear right side	Door - Deformed - Repair and paint
7	Vehicle glazing	Windscreen (Rissbildung) - Stone chips - Replace

Wear and tear

No.	Component group	Description
1	Bonnet	Bonnet - Stone chips - No deduction
2	2nd wheel set	3 alloy rims - Scratched - No deduction
3	Interior	Interior - Scratch(es) - No deduction
4	Door - front left side	Door - dent(s) - No deduction

The vehicle shows signs of wear and tear commensurate with its age and use.

Previous damages

No.	Previous damage	Extent of damage (Net)
1	Front, Provided by user / customer, from 16 Jul 2025	1.610,03 €
2	Side right, Provided by user / customer, from 28 May 2025	2.090,71 €
3	Side - left, Provided by user / customer, from 12 Aug 2025	4.532,44 €

Repainting

No.	Repainting
1	Bonnet, Side panel - rear right side, Door - rear left side, Door - rear right side, Door - front left side, Professionally carried out, Invoice of repair done Non-existent

Paint coat thickness measurement

Bonnet	257 µm	Side panel - rear right side	204 µm
Door - rear left side	177 µm	Door - rear right side	220 µm
Door - front left side	196 µm		

Order/Scope of Order

An order was placed to prepare a sales report for the described vehicle. This report includes the following:

- Description of key vehicle information
- Documentation of equipment features
(*Delivery by third-party service providers*)
- Documentation of damage, defects, missing parts
- Documentation of prior damage, unrepaired prior damage, repainting
- A brief visual or functional inspection of the equipment details, if possible.
(*Functional testing of driver assistance systems is not included in the scope of services!*)
- a photographic documentation of the vehicle



Basis for the order

This product is based on the guidelines for vehicle returns and valuations published by Alphabet Fleet GmbH. The expert makes the specific findings in each individual case objectively, within the framework of the prescribed standards, based on their own expertise.

The vehicle inspection takes place in a fully assembled, unassembled state.

Damage or defects that can only be detected during disassembly/diagnostic work or through further investigation remain within the realm of prognostic risk. An increased risk exists due to concealed defects caused by fraudulent misrepresentation and which were not identifiable by the expert.

Damage or defects resulting from normal use or wear and tear of the vehicle will be accepted in accordance with the applicable standard.

There was no explicit identification or monetary consideration of the expected features within the product.

Features which, in their nature and extent, slightly exceed normal use but do not constitute unacceptable damage, will be documented and indicated as signs of wear, if applicable.

Damage or defects that, according to the applicable standard, can no longer be attributed to normal use or wear and tear are listed under "Value Reducing Factors" in the product description.

Depending on the product specification, a monetary ID can be provided. If this takes place, the costs can be 100% d or pro rata depending on the vehicle's age and mileage.

Previous damages

According to available information previous damages were repaired at the vehicle. Traces of repairs, which allow conclusions about the area of repair, were not recognizable during the inspection.

Comments

Wartungshistorie gemäß Auftraggeber Informationen.



Figure 1: Diagonal front (left)



Figure 2: Diagonal front (right)



Figure 3: Diagonal rear (left)



Figure 4: Diagonal rear (right)



Figure 5: Interior - front

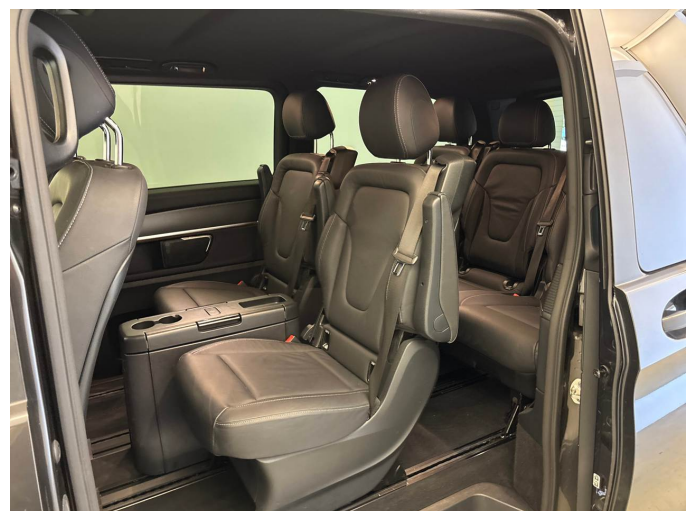


Figure 6: Interior - rear



Figure 7: Instrument cluster



Figure 8: Instrument panel



Figure 9: Interior 360° view



Figure 10: Cargo area



Figure 11: VIN



Figure 12: Mounted tyres



Figure 13: Documents



Figure 14: Additional tyres



Figure 15: Navigation



Figure 16: Misc.

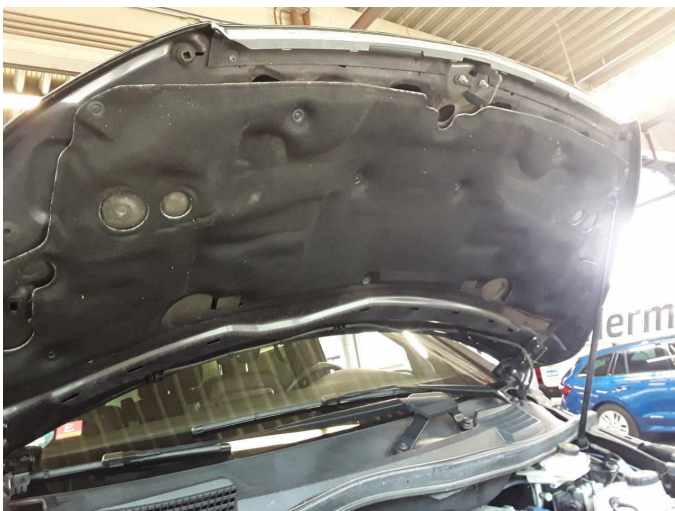


Figure 17: Misc.



Figure 18: Misc.



Figure 19: Misc.



Figure 20: Misc.



Figure 21: Misc.



Figure 22: Misc.



Figure 23: Misc.

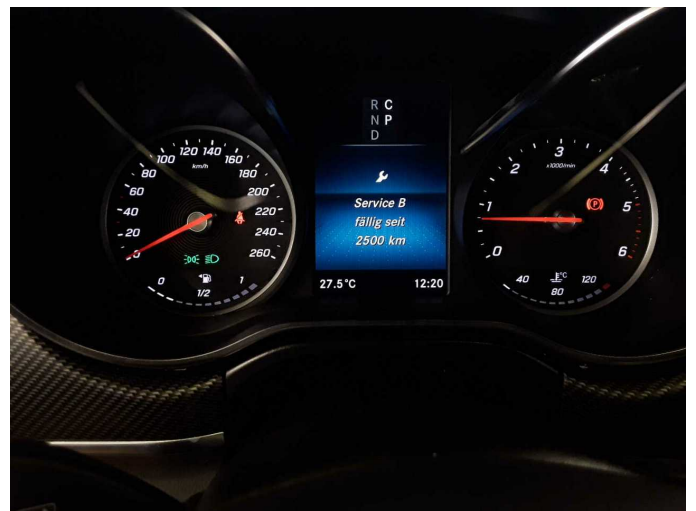


Figure 24: Misc.



Figure 25: Misc.



Figure 26: Misc.



Figure 27: Misc.

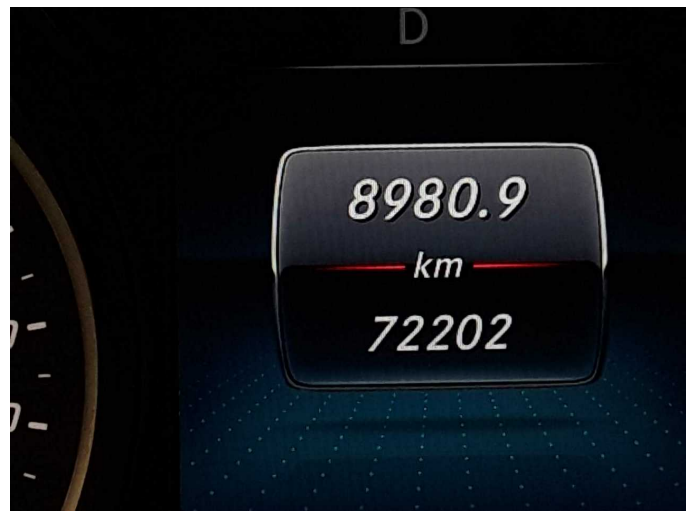
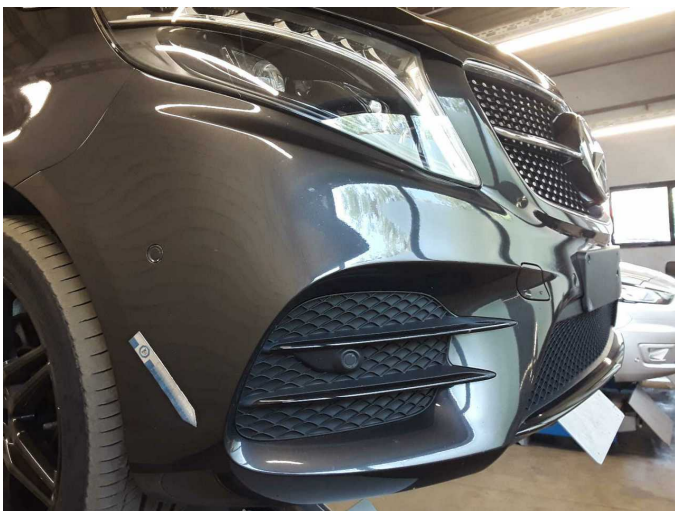
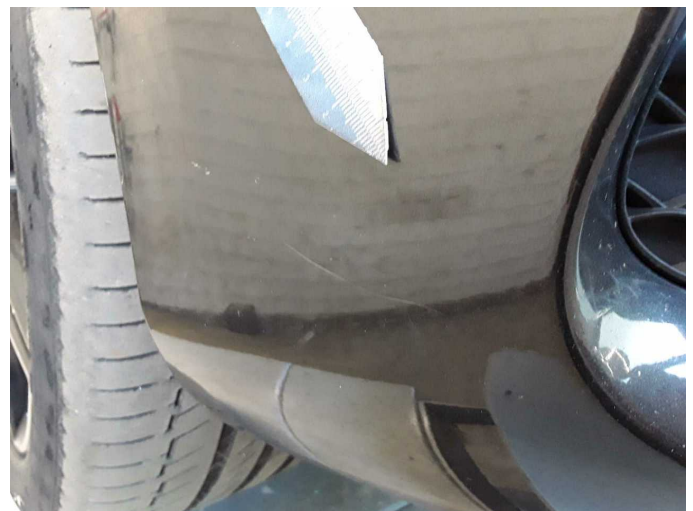


Figure 28: Misc.



Damage 1: Front bumper: Front bumper - Scratch(es) - Smart repair



Damage 1: Front bumper: Front bumper - Scratch(es) - Smart repair



Damage 2: Wheel / tyres: Alloy rim - front right side - Scratch(es) - Loss in value



Damage 2: Wheel / tyres: Alloy rim - front right side - Scratch(es) - Loss in value



Damage 3: Wheel / tyres: Alloy rim - front right side - Scratched - Loss in value



Damage 3: Wheel / tyres: Alloy rim - front right side - Scratched - Loss in value



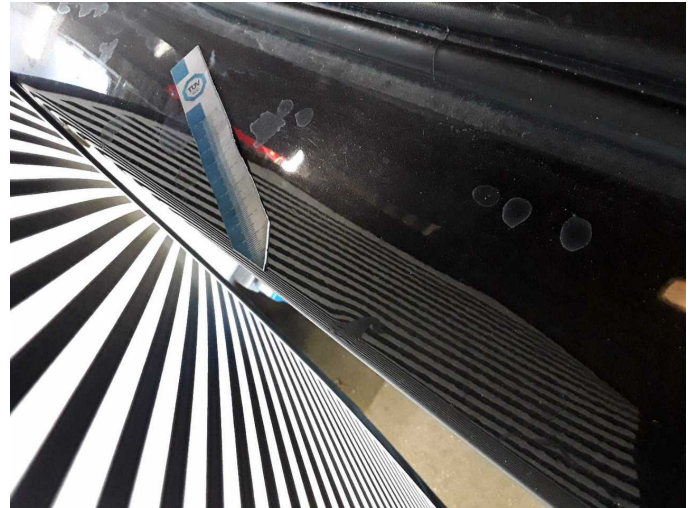
Damage 4: Misc.: Inspection / maintenance - Due - Perform



Damage 5: Rear bumper: Rear bumper - Dent / paintcoat damage - Repair and paint



Damage 5: Rear bumper: Rear bumper - Dent / paintcoat damage - Repair and paint



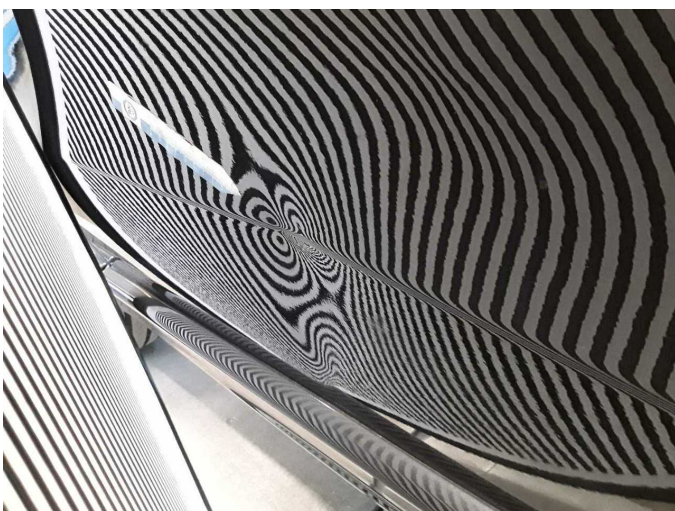
Damage 5: Rear bumper: Rear bumper - Dent / paintcoat damage - Repair and paint



Damage 6: Door - rear right side: Door - Deformed - Repair and paint



Damage 6: Door - rear right side: Door - Deformed - Repair and paint



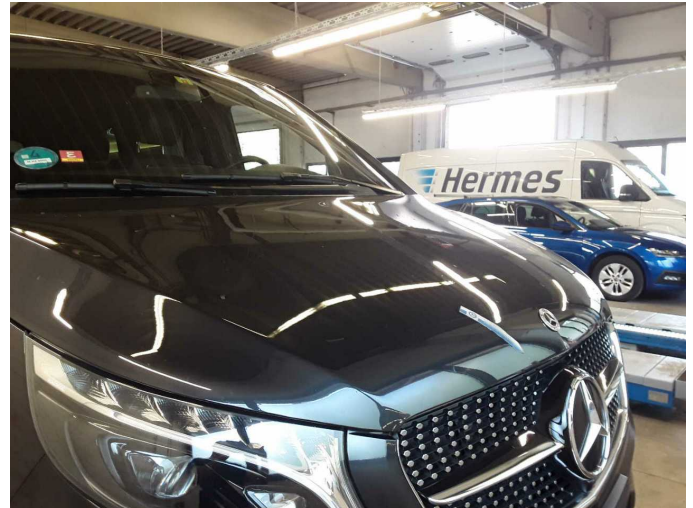
Damage 6: Door - rear right side: Door - Deformed - Repair and paint



Damage 7: Vehicle glazing: Windscreen (Rissbildung) - Stone chips - Replace



Damage 7: Vehicle glazing: Windscreen (Rissbildung) - Stone chips - Replace



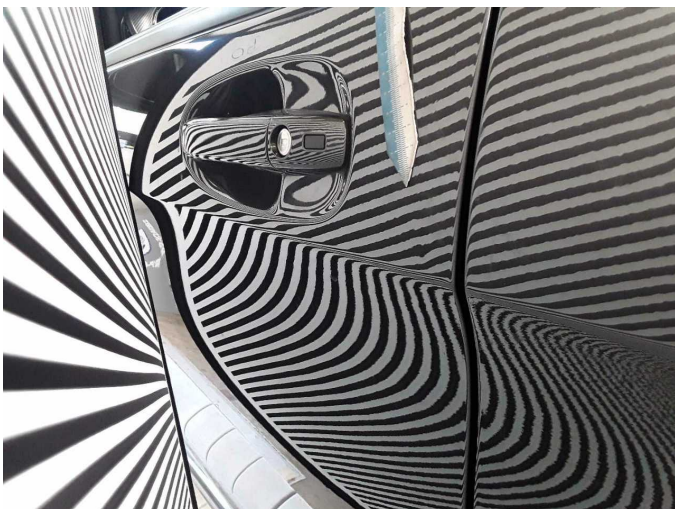
Wear and tear 1: Bonnet: Bonnet - Stone chips - No deduction



Wear and tear 1: Bonnet: Bonnet - Stone chips - No deduction



Wear and tear 4: Door - front left side: Door - dent(s) - No deduction



Wear and tear 4: Door - front left side: Door - dent(s) - No deduction



Repainting 1: Bonnet, Side panel - rear right side, Door - rear left side, Door - rear right side, Door - front left side



Repainting 1: Bonnet, Side panel - rear right side, Door - rear left side, Door - rear right side, Door - front left side



Repainting 1: Bonnet, Side panel - rear right side, Door - rear left side, Door - rear right side, Door - front left side



Repainting 1: Bonnet, Side panel - rear right side, Door - rear left side, Door - rear right side, Door - front left side



Repainting 1: Bonnet, Side panel - rear right side, Door - rear left side, Door - rear right side, Door - front left side



Repainting 1: Bonnet, Side panel - rear right side, Door - rear left side, Door - rear right side, Door - front left side



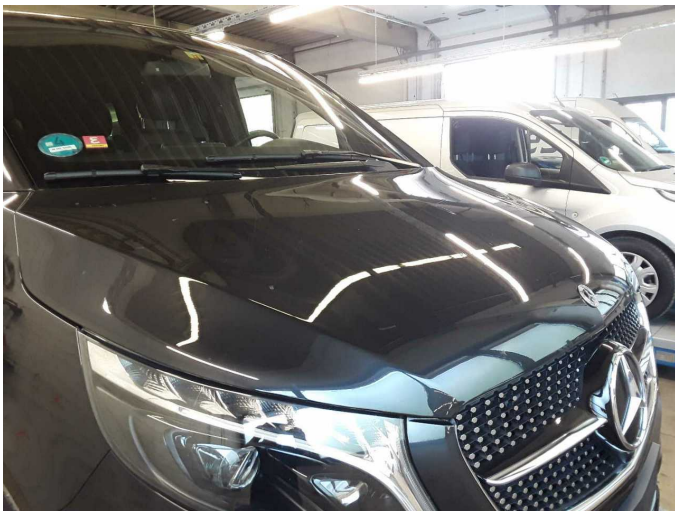
Repainting 1: Bonnet, Side panel - rear right side, Door - rear left side, Door - rear right side, Door - front left side



Repainting 1: Bonnet, Side panel - rear right side, Door - rear left side, Door - rear right side, Door - front left side



Repainting 1: Bonnet, Side panel - rear right side, Door - rear left side, Door - rear right side, Door - front left side



Repainting 1: Bonnet, Side panel - rear right side, Door - rear left side, Door - rear right side, Door - front left side



Wartungshistorie

(gemäß Auftraggeber Informationen)

Fahrgestellnummer: W1VVKNSZ5P4286714

Hersteller / Modell: MERCEDES-BENZ MERCEDES-BENZ V 300 d lang 4Matic 9G-TRONIC Avantgarde Edition 2023

Datum	KM-Stand	Beschreibung
30.01.2025	33.442	Bremsklötze vorne; Regelwartungsdienst