

Expertise

Protocol number: 46042154
Order No. / Reference: 26154198
Inspection date: 16 Jun 2026

Manufacturer: Mercedes-Benz

Model: 317 CDI Sprinter Standard HA 9G-TRONIC PRO

VIN: W1V3KBFZ0TP864107



Vehicle details	
Manufacturer / Type / Model / Equipment	
Mercedes-Benz 317 CDI Sprinter Standard HA 9G-TRONIC PRO	
Vehicle Identification number	W1V3KBFZ0TP864107
Mileage (Read)	8,894 km
First registration	2 Oct 2025
Number of holders	1
Power / Engine displacement	125 kw / 1,950 ccm
Fuel type / Cylinder	Diesel / 4
Gearbox / Number of gears	Automatic / 9
Type of drive	Rear drive
Type of vehicle	Van
Colour / colour code	ARKTIKWEISS
Doors / Seats	4 / 3
Upholstery type	Cloth
Colour of upholstery	Black-Dark grey
Type of use	rental car



Vehicle details

Maintenance booklet / proof	digital proof / complete	Next maintenance in	405 Tag(e)
Key is / should be	2 / 2	FZG documents	ZB#2 (B) was available (copy), ZB#1 (S) was not available.
		Letter No.	HP676283
Previous damage / Accident	None detectable	Repainting	None detectable
Inspection conditions	sufficient	Lifting equipment / pit	yes
Test drive	Not performed	Engine function test	Performed
Manufacturer key number/ type code number	2222 / BSU 63509		
Emission standard	EURO6;WLTP;EB;PI/CI;M, N1, N2	fine dust sticker	
Permitted total weight	3,500 kg	Empty weight	
Dimensions	5932 x 2020 x 2620		

Tyres

Mounted tyres

#	Tyre size	Type of tyre	Manufacturer	Tread depth
1)	235/65 R16 115R	All-season tyres on Steel rim with wheel cover	Falken	7mm / 7mm
2)	235/65 R16 115R	All-season tyres on Steel rim with wheel cover	Falken	7mm / 7mm

Legend: Tread depth information for the left tire is listed first, for the right tire it is listed second on the axle in the direction of travel.

TÜV SÜD Auto Partner GmbH
Gutenbergstraße 13
70771 Leinfelden-Echterdingen

Inspection location
ARS Altmann AG Automobillogistik
Lilienthalstraße 2
29693 Hodenhagen



Equipment



Standard equipment

- Storage compartment above windshield
- Rear towing eye
- ADAPTIVE ESP (latest generation) with load- and speed-dependent driving dynamics control (Anti-lock Braking System (ABS) - Traction Control System (ASR) - Electronic Brakeforce Distribution (EBD) - Hydraulic Brake Assist (BAS) - Load Adaptive Control (LAC) - Roll Over Mitigation (ROM) - Roll Movement Intervention (RMI) - Enhanced Understeering Control (EUC) - Brake Disc Wiping/Drying (BDW) - Electronic Brake Prefill (EBP) - Easy Lane Change (ELC))
- Electrically folding exterior mirrors
- Battery: fleece battery 12 V / 92 Ah
- Brake assist, active
- Brake lights, adaptive
- Roof: High roof
- Diesel particulate filter and SCR
- Digital operating instructions
- Entry handle on rear right corner pillar
- Driving light assistant
- Electric window regulator for driver and passenger door
- Noise measures
- Seatbelt warning device for front passenger seat
- Grab handle for entry to the cargo area sliding door on the partition wall
- HOLD function
- Clothes hooks in the driver's cab
- Instrument cluster with color display
- Paint finish: Solid color paint
- Cable duct on side wall
- Steering wheel: Multifunction steering wheel
- Longitudinal beam reinforcement
- Mercedes-Benz emergency call system
- Without weight increase/decrease: 3,500 kg
- Breakdown Management (By pressing the breakdown button or via the phone book entry in the vehicle's address book, the disabled vehicle automatically establishes a voice connection with the Customer Assistance Center (CAC). It transmits the current location and all relevant vehicle information. The CAC staff immediately inform the nearest Mercedes-Benz Service24h, which dispatches a repair service.)
- Tires: Summer tires
- Wheels: Tires 235/65 R 16 C
- Wheels: Premium complete wheel protection (3 years)
- Rear view camera
- Crosswind Assist
- Seats: Passenger seat, two-seater
- Start-stop function
- USB 5V socket
- Speedometer km/h
- Cruise control
- Blind Spot Assist
- Storage compartment under cockpit
- Axle ratio $i = 3.923$
- Passenger side airbag
- Driver's side airbag
- Active Lane Keeping Assist
- ATTENTION ASSIST (ATTENTION ASSIST can assist the driver on long, monotonous journeys by monitoring attention. If signs of fatigue or increasing inattention are detected, it suggests a break.)
- Electrically adjustable and heated exterior mirrors, left and right
- Outdoor temperature display
- Hill start assist
- third brake light
- COC documents
- Ceiling light in the cargo/passenger compartment (with door contact)
- Tachometer
- Electrical components for trailer socket
- HVO-capable vehicle
- Generator 14 V / 250 A
- Transmission: 9G-TRONIC
- Seatbelt warning device for driver's seat
- Grab handle for entry of driver and passenger
- Main tank 93 liters
- Intelligent speed assistant
- Tempmatic controlled air conditioning
- Headrests (2), front
- Cable duct at rear portal
- Steering wheel adjustable for tilt and height
- Headlight range control
- Marker lights, side
- Navigation: Navigation pre-installation
- Package: Acoustics
- Upholstery: Cloth
- Radio: Digital Radio DAB
- Radio: MBUX multimedia system
- Radio accessories: Communication module (LTE) for digital services
- Rain sensor
- Tires: Tires without specified make
- Tires: Tires optimized for rolling resistance
- Tire pressure monitoring (on front and rear axles (wireless))
- Wheels: Steel rims 6.5 J x 16
- Sliding door on the right, cargo/passenger compartment
- Power steering
- Seats: Driver's seat
- Jump start contact (The jump start contact facilitates jump-starting the vehicle and externally charging the starter battery. The contact is located in the engine compartment on the air filter box.)
- continuous partition wall
- Lashing eyes (according to DIN 7510-3 in the floor and in the B-pillars)
- Warning triangle



- First aid kit
- Front axle with increased load capacity
- Pre-installation for Remote Services Plus
- Immobiliser
- Heat-insulating glass with band filter on the windshield
- Approval N1

- Parking light removed
- Central locking with radio remote control
- Registration certificate, Part II

Extra equipment

- Storage for smartphones including wireless charging
- Wooden floor (cargo area)
- Hinged lid for storage compartment
- Load securing: Lashing rails on the side wall to the side railing.
- Radio: MBUX multimedia system with 10.25-inch touchscreen
- Seats: Driver's seat armrest
- Seats: Suspension seat comfort version, driver's seat
- Long-throw nozzles in I-panel

- Entrance rear door
- Interior lining of the cargo area up to roof height, washable in conjunction with partition wall, continuous along pillar C
- LED light strip in the cargo area
- Package: Parking package with 360° camera (Parking Assistant Rear Cross Traffic Alert Drive Away Assist)
- Wheel arch loadable
- Seats: Driver's seat box, low
- Phone: Smartphone integration package

Brief expert findings

Documents submitted	At the time of the inspection, the vehicle registration certificate Part 2 (title) was available, but the vehicle registration certificate Part 1 (document) was not. (Copy)
VIN comparison	The vehicle identification number (VIN) was read from the vehicle and its conformity with the submitted documents was confirmed by the undersigned during the inspection.
Inspection	The inspection conditions were sufficient for the assessment of the vehicle. Lifting equipment and/or a pit were available for examining the vehicle.
Test drive	No test drive/shunting maneuver was carried out during the inspection of the vehicle.
Engine function test	An engine test run was performed.

Value reducing factors

No.	Component group	Description
1	Wheel / tyres	Tyres - complete set (Allwetter- statt Sommerreifen) - Differs from the original configuration - No deduction
2	Rear bumper	Parking sensors - right side - Broken / torn - Replace
3	Front bumper	Front bumper - Scratched - Replace

Wear and tear

No.	Component group	Description
1	Vehicle glazing	Windscreen - Stone chips - No deduction

The vehicle shows signs of wear and tear commensurate with its age and use.

Paint coat thickness measurement

Roof	99 µm	Roof rail - left side	88 µm
Roof rail - right side	70 µm	Boot lid / rear door	78 µm
Mudguard - left side	99 µm	Mudguard - right side	80 µm
Bonnet	90 µm	Side panel - rear left side	98 µm
Side panel - rear right side	77 µm	Door - rear left side	101 µm
Door - rear right side	100 µm	Door - front left side	90 µm
Door - front right side	101 µm		



Order/Scope of Order

An order was placed to prepare a sales report for the described vehicle. This report includes the following:

- Description of key vehicle information
- Documentation of equipment features
(Delivery by third-party service providers)
- Documentation of damage, defects, missing parts
- Documentation of prior damage, unrepaired prior damage, repainting
- A brief visual or functional inspection of the equipment details, if possible.
(Functional testing of driver assistance systems is not included in the scope of services!)
- a photographic documentation of the vehicle

Basis for the order

This product is based on the guidelines for vehicle returns and valuations of light commercial vehicles published by Alphabet Fleet Management GmbH. The expert makes the specific findings in each individual case objectively, within the framework of the prescribed standards, based on their own expertise.

The vehicle inspection takes place in a fully assembled, unassembled state.

Damage or defects that can only be detected during disassembly/diagnostic work or through further investigation remain within the realm of prognostic risk. An increased risk exists due to concealed defects caused by fraudulent misrepresentation and which were not identifiable by the expert.

Damage or defects resulting from normal use or wear and tear of the vehicle will be accepted in accordance with the applicable standard.

There was no explicit identification or monetary consideration of the expected features within the product.

Features which, in their nature and extent, slightly exceed normal use but do not constitute unacceptable damage, will be documented and indicated as signs of wear, if applicable.

Damage or defects that, according to the applicable standard, can no longer be attributed to normal use or wear and tear are listed under "Value Reducing Factors" in the product description.

Depending on the product specification, a monetary ID can be provided. If this takes place, the costs can be 100% or pro rata depending on the vehicle's age and mileage.

Previous damages

No apparent prior damage that had been repaired could be found on the vehicle.



Figure 1: Diagonal front (left)



Figure 2: Diagonal front (right)



Figure 3: Diagonal rear (left)



Figure 4: Diagonal rear (right)



Figure 5: Interior - front



Figure 6: Interior - rear



Figure 7: Instrument cluster



Figure 8: Instrument panel



Figure 9: Interior 360° view



Figure 10: Cargo area



Figure 11: VIN



Figure 12: Mounted tyres



Figure 13: Mounted tyres



Figure 14: Documents



Figure 15: Misc.



Figure 16: Misc.



Figure 17: Misc.

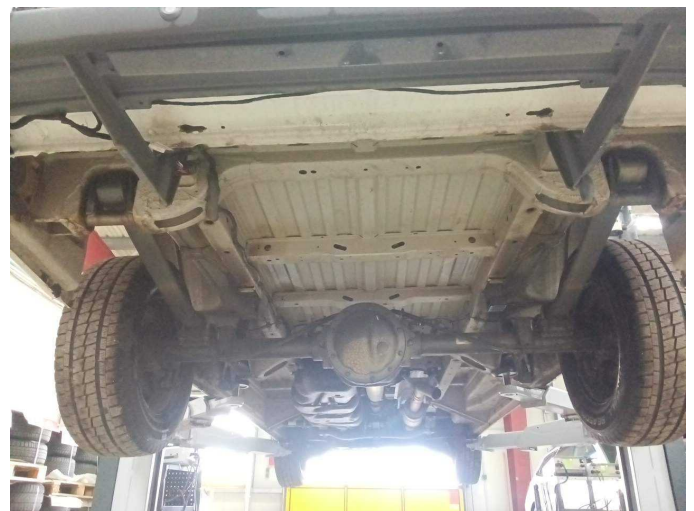


Figure 18: Misc.



Figure 19: Misc.



Figure 20: Misc.



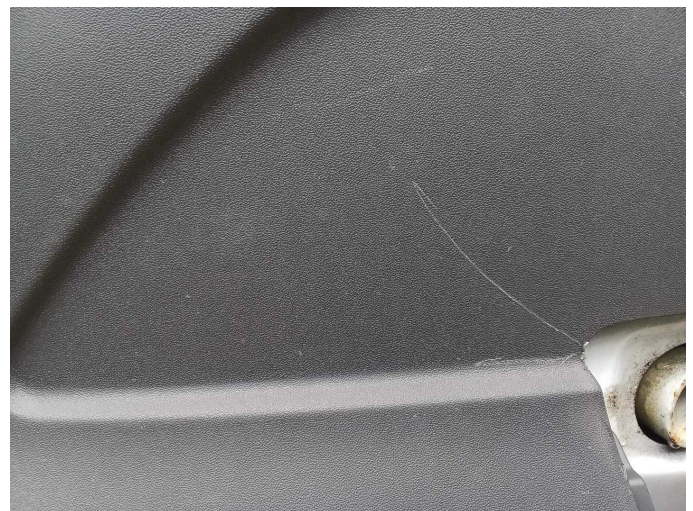
Damage 2: Rear bumper: Parking sensors - right side - Broken / torn - Replace



Damage 2: Rear bumper: Parking sensors - right side - Broken / torn - Replace



Damage 3: Front bumper: Front bumper - Scratched - Replace



Damage 3: Front bumper: Front bumper - Scratched - Replace



Damage 3: Front bumper: Front bumper - Scratched - Replace