

Expertise

Protocol number: 45576144
Order No. / Reference: 26116466
Inspection date: 11 May 2026

Manufacturer: Ford

Model: Focus Turnier 1.5 EcoBlue Start-Stopp-System Aut.
COOL&CONNECT

VIN: WF0PXXGCHPMA53367



Vehicle details

Manufacturer / Type / Model / Equipment

Ford Focus Turnier 1.5 EcoBlue Start-Stopp-System Aut.
COOL&CONNECT

Vehicle Identification number	WF0PXXGCHPMA53367
Mileage (Read)	193,334 km
First registration	26 Aug 2021
Number of holders	1
Next periodical technical inspection	08/2026 (Report on hand)

Power / Engine displacement	88 kw / 1,499 ccm
Fuel type / Cylinder	Diesel / 4
Gearbox / Number of gears	Automatic / 8
Type of drive	Front drive
Type of vehicle	Station wagon

Colour / colour code	Frozen White
Doors / Seats	5 / 5
Upholstery type	Cloth
Colour of upholstery	Black-Anthracite



Vehicle details			
Maintenance booklet / proof	digital proof / complete	Next maintenance in	71 %
Last service on / at	10/2025 at 184,565 km		
Key is / should be	2 / 2	FZG documents	ZB#2 (B) was available (copy), ZB#1 (S) was not available.
		Letter No.	GD560259
Previous damage / Accident	Detectable	Repainting	Detectable
Inspection conditions	Conditional: Light/moisture/dirt	Lifting equipment / pit	No
Test drive	Not performed	Engine function test	Not possible
Manufacturer key number/ type code number	8566 / BPV 00579		
Emission standard	EURO6;WLTP;AP;PI/CI; M, N1 I	fine dust sticker	
Permitted total weight	1,995 kg	Empty weight	

Tyres

Mounted tyres				
#	Tyre size	Type of tyre	Manufacturer	Tread depth
1)	205/60 R16 96H	Winter tyres on Light alloy	Continental	4mm / 4mm
2)	205/60 R16 96H	Winter tyres on Light alloy	Continental	4mm / 4mm
Additional tyres				
#	Tyre size	Type of tyre	Manufacturer	Tread depth
1)	205/60 R16 92H	Summer tyres on Light alloy	Continental	3mm / 3mm
2)	205/60 R16 92H	Summer tyres on Light alloy	Continental	4mm / 4mm
Replacement				
Typ	Tyre size	Type of tyre	Manufacturer	Tread depth
	Tirefit	Expiration date 05/2025		

Legend: Tread depth information for the left tire is listed first, for the right tire it is listed second on the axle in the direction of travel.



Equipment

Standard equipment

- Airbag: Passenger airbag deactivation
- Exterior mirrors in body color, driver and passenger side, electrically adjustable and heated
- Tires: 6.5 J x 16 alloy wheels (4) with 205/60 R 16 tires
- Fabric headliner
- Roof spoiler painted in car color
- Tachometer
- Electronic Safety and Stability Program (ESP)
- Driving mode switch, selective
- Electric windows front and rear
- Ford Easy Fuel
- FordPass Connect including eCall, live traffic information (only with navigation) and Wi-Fi hotspot
- Speed limiter
- Transmission: 8-speed automatic transmission
- Back window, heater
- Interior lighting with LED technology
- Intelligent security system
- air conditioning, manual
- LED daytime running lights
- Adjustable steering column
- Center console "Premium" front
- Navigation: Ford Navigation
- Emergency brake light
- Pollen filter and dust filter
- Post-Collision Assist
- Tire repair kit
- Rear view camera
- Electromechanical power steering
- Seats: Driver's seat height adjustable
- Seats: Rear seat backrest
- Seats: Front sports seats with enhanced lateral support
- 12-volt power outlet in the luggage compartment
- Child safety lock on the rear doors, manual
- Lashing eyes in the luggage compartment
- Electronic immobilizer
- Heat-insulating glazing, tinted
- Additional heating
- Anti-lock braking system (ABS) with electronic brake force distribution (EBD)
- Mounting points behind the second row of seats
- Chrome decor
- Roof rails, aluminum
- Diesel particulate filter (DPF)
- Electronic Shifter
- Driver information system
- Lane keeping assist including lane keeping assist
- Electric parking brake with auto-hold function
- Ford ECO-Coach
- Luggage compartment lighting
- Luggage compartment floor, adjustable in two ways
- Cruise control
- Illuminated glove compartment
- rear window wiper
- Instrument lighting, adjustable
- Isofix bracket
- Headrests: 2 front and 3 rear, height adjustable
- Steering wheel: 3-spoke design
- Make-up mirrors in driver and passenger sun visors
- MyKey key system (individually programmable second key)
- Fog light
- Front and rear parking pilot system
- Upholstery: Cloth
- Pre-Collision Assist
- Tire Pressure Monitoring System (TPMS)
- Headlight assistant with day/night sensor
- Seats: Passenger seat, 2-way adjustable
- Seats: Map grid on the driver's and front passenger's seat backrests
- Start-stop system
- Carpet floor mats in the front
- Black trim around the side windows
- Warning system for unfastened seat belts for the 1st and 2nd rows of seats
- Central/Double Locking

Extra equipment

- Paint finish: Frost White
- Safety partition net for luggage compartment
- Package: Winter (heated windscreen - heated steering wheel - individually and variably heated front seats)



Brief expert findings

Documents submitted	At the time of the inspection, the vehicle registration certificate Part 2 (title) was available, but the vehicle registration certificate Part 1 (document) was not. (Copy)
VIN comparison	The vehicle identification number (VIN) was read from the vehicle and its conformity with the submitted documents was confirmed by the undersigned during the inspection.
Inspection	A proper visual inspection of the paintwork and bodywork was only possible to a limited extent due to insufficient lighting conditions/dampness or dirt. No lifting equipment or pit was available for inspecting the vehicle. Therefore, inspection of the vehicle's underside was only possible to a limited extent.
Test drive	No test drive/shunting maneuver was carried out during the inspection of the vehicle.
Engine function test	An engine test run could not be performed. This is due to the following reason.: Getriebeschaden

Value reducing factors

No.	Component group	Description
1	Equipment	Tirefit filler - Expired - Replace
2	Roof	Roof rail - left side - dent(s) - Smooth repair work
3	Boot lid / rear door	Boot lid (Lässt sich nichtöffnen) - Functional / admissibility - Perform diagnosis
4	Boot lid / rear door	Boot lid - dent(s) - Smooth repair work
5	Engine	Engine cover - Damage caused by marten / rodent - Replace
6	Trim / covers	Floor covering - front left side - Broken / torn - Smart repair
7	Interior	Interior - Soiled - Clean
8	Engine	Engine (Startet auch mit Booster nicht) - Functional / admissibility - Perform diagnosis
9	Braking system	Brake discs and brake pads - front - Corrosion - Replace
10	Braking system	Brake discs and pads - rear - Corrosion - Replace
11	Vehicle glazing	Windscreen (Rissbildung, keinStaubschutz) - Stone chips - repair according to calculation
12	Gearbox	Gearbox - Non-operational - repair according to calculation

Wear and tear

No.	Component group	Description
1	Rear bumper	Rear bumper - Scratch(es) - No deduction
2	Trim / covers	Floor mats - Broken / torn - No deduction

The vehicle shows signs of wear and tear commensurate with its age and use.

Previous damages

No.	Previous damage	Extent of damage (Net)
1	Front, Provided by user / customer, from 19 Mar 2025	2.215,37 €
2	Front, Side right, Provided by user / customer, from 15 Dec 2023	4.160,14 €
3	Rear, Side - left, Provided by user / customer, from 2 Oct 2023	4.867,60 €

Repainting

No.	Repainting
1	Side panel - rear left side, Professionally carried out, Invoice of repair done Non-existent
2	Door - rear left side, Professionally carried out, Invoice of repair done Non-existent
3	Door - front right side, Professionally carried out, Invoice of repair done Non-existent



Paint coat thickness measurement

Side panel - rear left side	231 µm	Door - rear left side	190 µm
Door - front right side	196 µm		

Order/Scope of Order

An order was placed to prepare a sales report for the described vehicle. This report includes the following:

- Description of key vehicle information
- Documentation of equipment features
(*Delivery by third-party service providers*)
- Documentation of damage, defects, missing parts
- Documentation of prior damage, unrepaired prior damage, repainting
- A brief visual or functional inspection of the equipment details, if possible.
(*Functional testing of driver assistance systems is not included in the scope of services!*)
- a photographic documentation of the vehicle

Basis for the order

This product is based on the guidelines for vehicle returns and valuations published by Alphabet Fleet GmbH. The expert makes the specific findings in each individual case objectively, within the framework of the prescribed standards, based on their own expertise.

The vehicle inspection takes place in a fully assembled, unassembled state.

Damage or defects that can only be detected during disassembly/diagnostic work or through further investigation remain within the realm of prognostic risk. An increased risk exists due to concealed defects caused by fraudulent misrepresentation and which were not identifiable by the expert.

Damage or defects resulting from normal use or wear and tear of the vehicle will be accepted in accordance with the applicable standard.

There was no explicit identification or monetary consideration of the expected features within the product.

Features which, in their nature and extent, slightly exceed normal use but do not constitute unacceptable damage, will be documented and indicated as signs of wear, if applicable.

Damage or defects that, according to the applicable standard, can no longer be attributed to normal use or wear and tear are listed under "Value Reducing Factors" in the product description.

Depending on the product specification, a monetary ID can be provided. If this takes place, the costs can be 100% d or pro rata depending on the vehicle's age and mileage.

Previous damages

According to available information previous damages were repaired at the vehicle. Traces of repairs, which allow conclusions about the area of repair, were not recognizable during the inspection.

Comments

Unterbodenbesichtigung nicht möglich-Mehrkosten können entstehen.



Figure 1: Diagonal front (left)



Figure 2: Diagonal front (right)



Figure 3: Diagonal rear (left)



Figure 4: Diagonal rear (right)



Figure 5: Interior - front

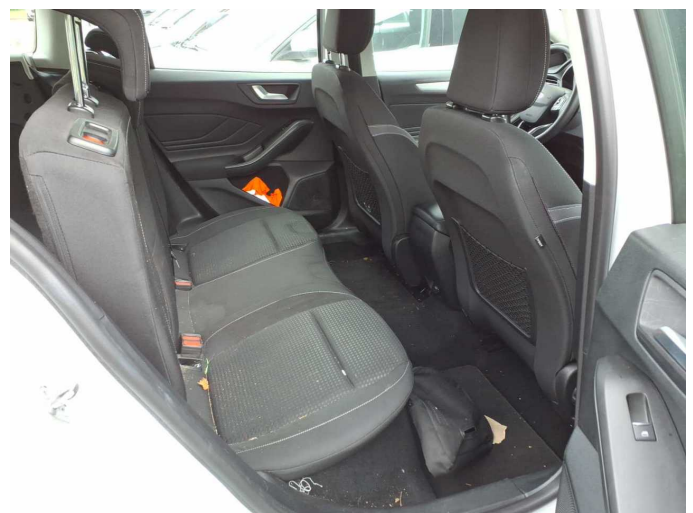


Figure 6: Interior - rear



Figure 7: Instrument cluster



Figure 8: Instrument panel



Figure 9: Interior 360° view



Figure 10: Cargo area



Figure 11: VIN



Figure 12: Mounted tyres



Figure 13: Documents



Figure 14: Documents

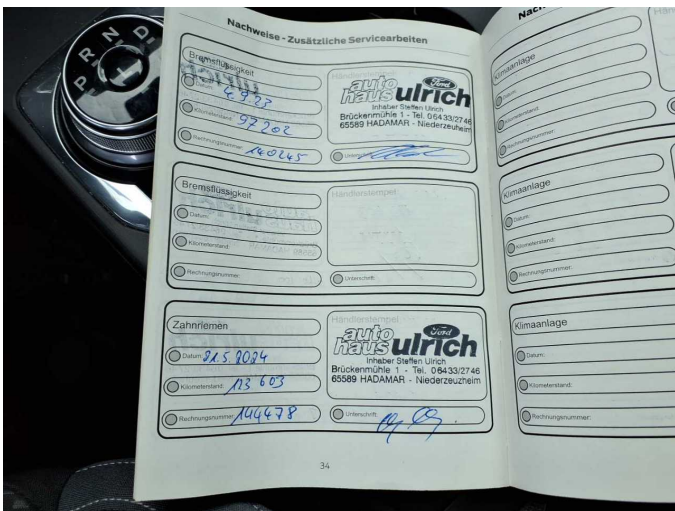


Figure 15: Documents



Figure 16: Documents

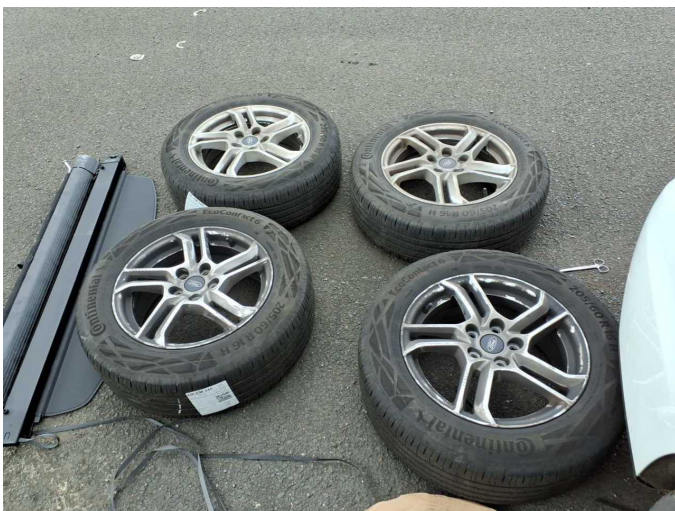


Figure 17: Additional tyres



Figure 18: Navigation



Figure 19: Misc.



Figure 20: Misc.

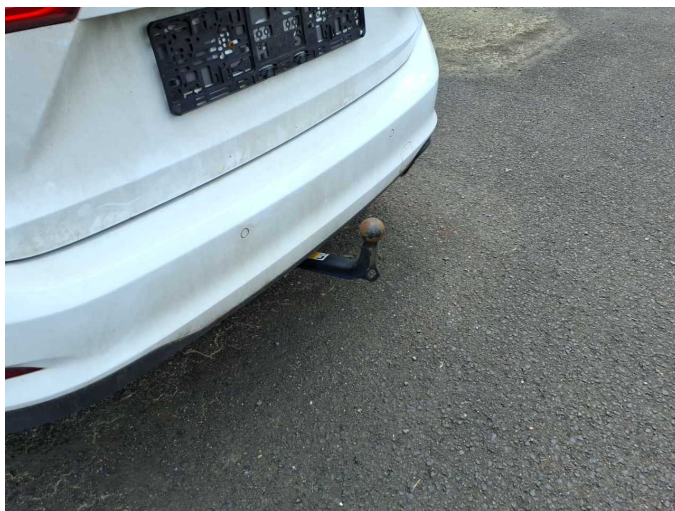


Figure 21: Misc.



Figure 22: Misc.



Figure 23: Misc.



Figure 24: Misc.



Figure 25: Misc.



Figure 26: Misc.



Figure 27: Misc.



Figure 28: Misc.

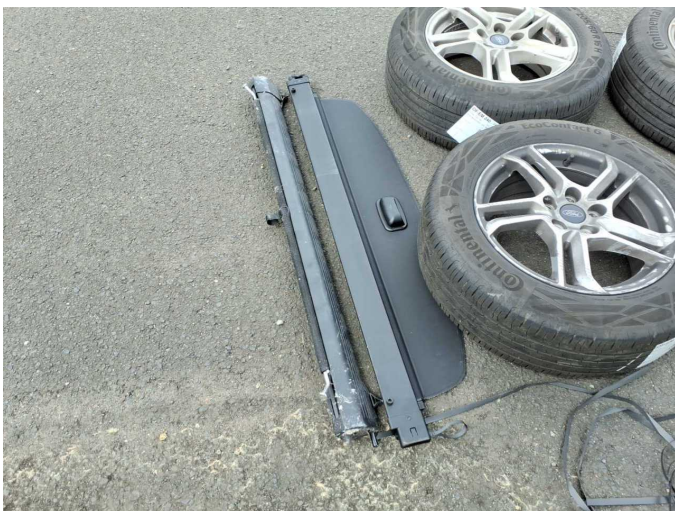


Figure 29: Misc.



Damage 1: Equipment: Tirefit filler - Expired - Replace



Damage 2: Roof: Roof rail - left side - dent(s) - Smooth repair work



Damage 2: Roof: Roof rail - left side - dent(s) - Smooth repair work



Damage 3: Boot lid / rear door: Boot lid (Lässt sich nichtöffnen) - Functional / admissibility - Perform diagnosis



Damage 4: Boot lid / rear door: Boot lid - dent(s) - Smooth repair work



Damage 4: Boot lid / rear door: Boot lid - dent(s) - Smooth repair work



Damage 4: Boot lid / rear door: Boot lid - dent(s) - Smooth repair work



Damage 4: Boot lid / rear door: Boot lid - dent(s) - Smooth repair work



Damage 5: Engine: Engine cover - Damage caused by marten / rodent - Replace



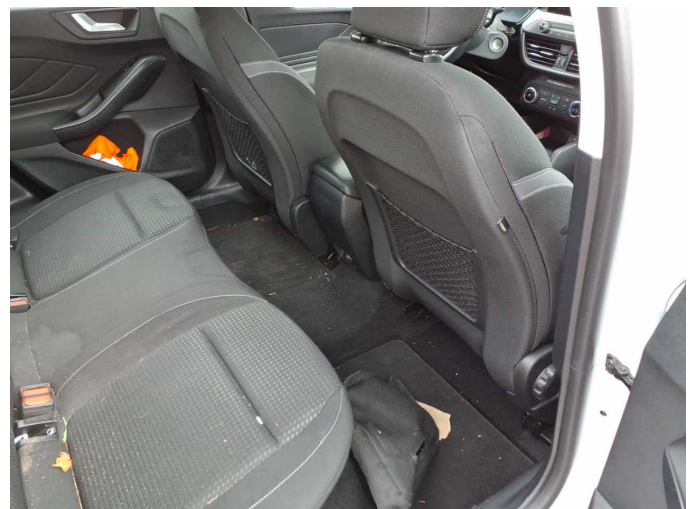
Damage 5: Engine: Engine cover - Damage caused by marten / rodent - Replace



Damage 6: Trim / covers: Floor covering - front left side - Broken / torn - Smart repair



Damage 7: Interior: Interior - Soiled - Clean



Damage 7: Interior: Interior - Soiled - Clean



Damage 8: Engine: Engine (Startet auch mit Booster nicht) - Functional / admissibility - Perform diagnosis



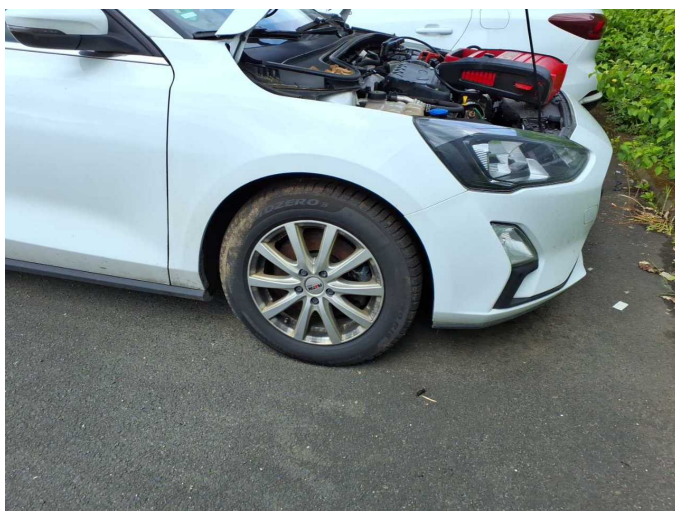
Damage 8: Engine: Engine (Startet auch mit Booster nicht) - Functional / admissibility - Perform diagnosis



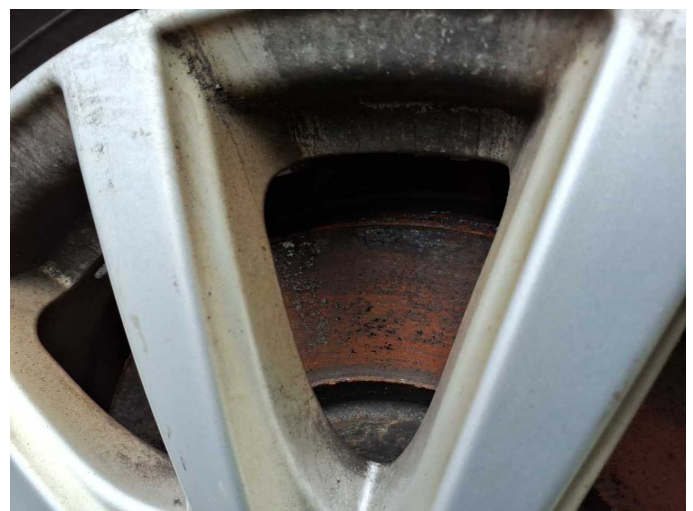
Damage 8: Engine: Engine (Startet auch mit Booster nicht) - Functional / admissibility - Perform diagnosis



Damage 8: Engine: Engine (Startet auch mit Booster nicht) - Functional / admissibility - Perform diagnosis



Damage 9: Braking system: Brake discs and brake pads - front - Corrosion - Replace



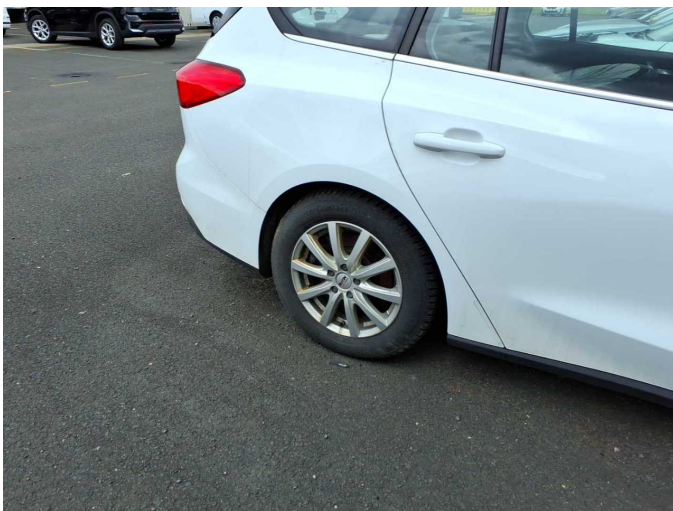
Damage 9: Braking system: Brake discs and brake pads - front - Corrosion - Replace



Damage 9: Braking system: Brake discs and brake pads - front - Corrosion - Replace



Damage 9: Braking system: Brake discs and brake pads - front - Corrosion - Replace



Damage 10: Braking system: Brake discs and pads - rear - Corrosion - Replace



Damage 10: Braking system: Brake discs and pads - rear - Corrosion - Replace



Damage 10: Braking system: Brake discs and pads - rear - Corrosion - Replace



Damage 11: Vehicle glazing: Windscreen (Rissbildung, kein Staubschutz) - Stone chips - repair according to calculation



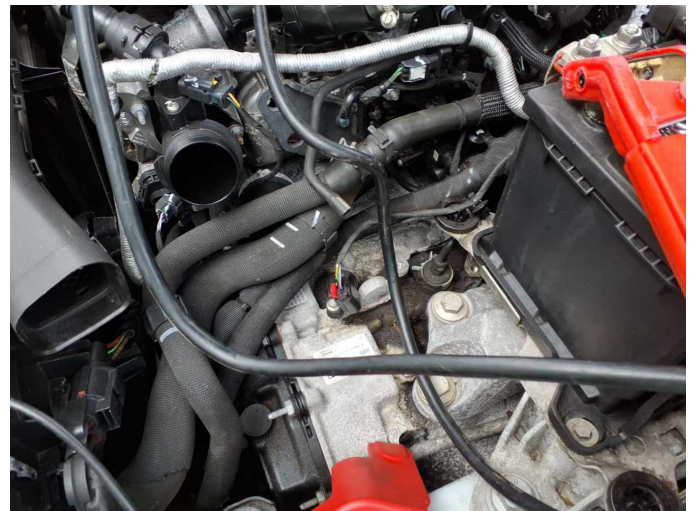
Damage 11: Vehicle glazing: Windscreen (Rissbildung, keinStaubschutz)
- Stone chips - repair according to calculation



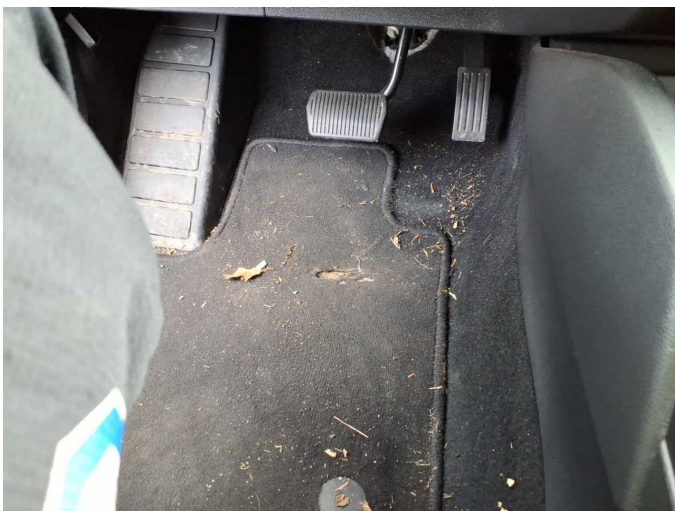
Damage 11: Vehicle glazing: Windscreen (Rissbildung, keinStaubschutz)
- Stone chips - repair according to calculation



Damage 12: Gearbox: Gearbox - Non-operational - repair according to calculation



Damage 12: Gearbox: Gearbox - Non-operational - repair according to calculation



Wear and tear 2: Trim / covers: Floor mats - Broken / torn - No deduction



Repainting 1: Side panel - rear left side



Repainting 2: Door - rear left side



Repainting 3: Door - front right side

Wartungshistorie

(gemäß Auftraggeber Informationen)



Fahrgestellnummer: WF0PXXGCHPMA53367
Hersteller / Modell: FORD FORD Focus Turnier 1.5 EcoBlue Start-Stopp-System Aut.
COOL&CONNECT

Datum	KM-Stand	Beschreibung
03.02.2026	193.334	Systemtest/Eigendiagnose
24.10.2025	1.126	Bremsflüssigkeit; Bremsflüssigkeit ern; Bremsklötze hinten; Bremsscheiben + Klötze h; Bremsscheiben hinten; Kraftstofffilter ern; Luftfiltereinsatz ern; Motoröl b. Wartung; Ölfilter ern; Regelwartungsdienst; Wartung Sonstiges
19.02.2025	156.717	Motoröl b. Wartung; Ölfilter ern; Regelwartungsdienst; Wartung Sonstiges
05.11.2024	136.242	HU + AU
24.06.2024	123.603	Bremsklötze hinten; Bremsklötze vorne; Bremsscheiben + Klötze h; Bremsscheiben + Klötze v; Bremsscheiben hinten; Bremsscheiben vorne; Kraftstofffilter ern; Luftfiltereinsatz ern; Motoröl b. Wartung; Ölfilter ern; Regelwartungsdienst; Reparatur Sonstiges; Systemtest/Eigendiagnose; Wartung Sonstiges; Wasserpumpe ern; Zahnriemen/Steuerkett ern; Zahnriemen/Steuerkett ern
25.09.2023	97.202	Bremsflüssigkeit; Bremsflüssigkeit ern; Motoröl b. Wartung; Ölfilter ern; Regelwartungsdienst; Wartung Sonstiges
07.12.2022	65.507	Bremsklötze hinten; Bremsklötze vorne; Kraftstofffilter ern; Luftfiltereinsatz ern; Motoröl b. Wartung; Regelwartungsdienst
05.05.2022	33.672	Motoröl b. Wartung; Regelwartungsdienst