

Expertise

Protocol number: 46322217
Order No. / Reference: 26512570
Inspection date: 3 Jul 2026

Manufacturer: Skoda

Model: Octavia Combi 2.0 TDI DSG Style

VIN: TMBJG0NX6NY056961



Vehicle details

Manufacturer / Type / Model / Equipment

Skoda Octavia Combi 2.0 TDI DSG Style

Vehicle Identification number TMBJG0NX6NY056961

Mileage (Read) 124,448 km

First registration 11 Jan 2022

Number of holders 1

Next periodical technical inspection 01/2027
(Report on hand)

Power / Engine displacement 85 kw / 1,968 ccm

Fuel type / Cylinder Diesel / 4

Gearbox / Number of gears Automatic / 7

Type of drive Front drive

Type of vehicle Station wagon

Colour / colour code Moon-Weiß Perleffekt

Doors / Seats 5 / 5

Upholstery type Cloth

Colour of upholstery Grey-Black



Vehicle details

Maintenance booklet / proof	digital proof / complete	Next maintenance in	20,700 km
Last service on / at	03/2026 at 122,424 km		
Key is / should be	3 / 3	FZG documents	ZB#2 (B) was available (copy), ZB#1 (S) was not available.
		Letter No.	GG209063
Previous damage / Accident	Detectable	Repainting	None detectable
Inspection conditions	sufficient	Lifting equipment / pit	No
Test drive	Not performed	Engine function test	Performed
Manufacturer key number/ type code number	8004 / AWK 00201		
Emission standard	EURO6;WLTP;AP;PI/CI; M, N1 I	fine dust sticker	
Permitted total weight	1,970 kg	Empty weight	

Tyres

Mounted tyres

#	Tyre size	Type of tyre	Manufacturer	Tread depth
1)	205/55 R17 91V	Summer tyres on Light alloy	Goodyear	4mm / 4mm
2)	205/55 R17 91V	Summer tyres on Light alloy	Goodyear	5mm / 5mm

Additional tyres

#	Tyre size	Type of tyre	Manufacturer	Tread depth
1)	205/60 R16 92H	Winter tyres on Light alloy	Dunlop	7mm / 7mm
2)	205/60 R16 92H	Winter tyres on Light alloy	Dunlop	7mm / 7mm

Replacement

Typ	Tyre size	Type of tyre	Manufacturer	Tread depth
	Tirefit	Expiration date 11/2025		

Legend: Tread depth information for the left tire is listed first, for the right tire it is listed second on the axle in the direction of travel.

TÜV SÜD Auto Partner GmbH
Wiesenring 2
04159 Leipzig

Inspection location
ARS Altmann AG Automobillogistik
Römerstraße 3
64560 Riedstadt



Equipment



Standard equipment

- Storage compartment in the luggage compartment with cargo element
- Airbag for driver and front passenger (passenger airbag can be deactivated)
- Airbag, driver's knee airbag
- Airbag, head airbags
- Airbag, front side airbags
- Ambient lighting (dashboard, front trim strips and footwell with selectable color climate) in the interior as well as logo projector on the outside)
- Automatically dimming exterior mirror (driver's side)
- Exterior mirrors with memory function (boarding spots in the exterior mirrors as well as memory function and mirror lowering)
- Hill start assist including auto-hold function
- Glasses compartment in the headliner
- Roof rails, anodized
- Diesel particulate filter
- Tachometer
- Electronic parking brake
- Electronic Stability Control (ESC)
- Driving profile selection
- Electric windows front and rear, including anti-pinch protection and child safety lock
- Cruise control system
- Tinted windows
- Heated rear window
- Rear window wiper including windshield washer system
- ISOFIX preparations on the front passenger seat and the outer rear seats including top tether anchorage
- Climatronic air conditioning (2-zone) (fully automatic, separately adjustable for driver and front passenger and anti-allergen filter & activated carbon filter - air-conditioned and illuminated glove compartment)
- LED license plate lights
- LED headlights with LED daytime running lights
- Steering wheel: height and reach adjustable
- Manual headlight range adjustment
- Rear center armrest with pass-through option
- Front center armrest, including storage compartment
- Engine drag torque control (MSR)
- Upholstery: Cloth
- Radio accessories: 2 USB-C ports on the front
- Radio accessories: 8 speakers
- Radio accessories: Digital radio reception DAB+
- Radio accessories: Voice control
- Rain sensor
- Tire mobility kit (tire repair spray incl. compressor)
- Electromechanical power steering
- Seat belts (Three three-point seat belts in the rear)
- Seats: Heated front seats
- Storage compartments (Four roof grab handles, rear with coat hooks; holder for the warning vest under the driver's seat; storage compartments in the front door panels with 1.5l bottle holders; storage compartments in the rear door panels with 0.5l bottle holders; ticket holder on the windshield; coat hooks on the B-pillars; storage compartments in the doors with felt lining)
- Anti-lock braking system (ABS)
- Traction control (ASR)
- Center section of the dashboard with fabric covering
- Electrically adjustable and heated exterior mirrors
- Electrically folding exterior mirrors
- Heated windshield washer nozzles including 5l washer fluid reservoir
- Hydraulic brake assist (HBA)
- Grey headliner
- Decorative strip in silver finish with ambient lighting
- Digital instrument cluster (Virtual Cockpit) 10.2"
- Third brake light
- Electronic transverse differential lock (XDS+)
- Driving light assistant (Coming Home / Leaving Home function)
- Front radar assistant including city emergency braking function and pedestrian and cyclist detection
- Transmission: 7-speed dual-clutch transmission (DSG)
- Green tec: Start/stop system including brake energy recuperation
- Interior mirror automatically dimming
- Kessy, keyless entry and start-stop system
- Child safety lock for the rear doors and windows
- Removable boot cover
- Headrests (5) front and rear height adjustable
- LED fog lights
- LED taillights in crystal glass look and animated turn signals
- Remote release of the rear seat backrests in the trunk
- Steering wheel: Leather steering wheel with multifunction buttons and paddle shifters (leather steering wheel and gearshift lever with leather elements - infotainment and driver assistance system operation)
- Front and rear parking sensors
- Radio: Bolero music system with capacitive 10" color display
- Radio accessories: Bluetooth hands-free system
- Radio accessories: SmartLink (Apple CarPlay - Android Auto)
- Tire pressure monitoring
- Wheels: 17" alloy wheels Rotare AERO (7J x 17, ET 46 with tires 205/55 R17)
- Safety lights in the front side doors
- Seats: Electrically adjustable front seats with memory function
- Seats: Rear seat backrest split 60:40, foldable
- Speed limiter
- Lane keeping assistant (Lane Assist)
- 12V socket in the trunk
- Telephone: Phonebox with inductive charging function (connection via external antenna)



- Seats: Height-adjustable driver and passenger seats (including lumbar support)
- SKODA Care Connect (SOS emergency call function (eCall+ including automatic activation in the event of an accident with airbag deployment) - Mobility service (connection option for rapid assistance in case of breakdown) - Information service (connection option to the hotline for all questions relating to vehicle functions) - Free remote vehicle access for 1 year (Remote Access) with access to vehicle data and functions via smartphone, e.g. parking position, activating hazard warning lights, current fuel level)

- Phone: Wireless SmartLink for Apple CarPlay
- Lashing eyes in the trunk
- Immobiliser
- Central locking including remote control integrated into the key and EASY Start

Extra equipment

- Luggage net partition
- Paint finish: Pearl effect
- Package: Light & Sight (cornering lights in the fog lights - headlight cleaning system - LED ambient lighting - LED main headlights matrix and dynamic high beam assist (AFS) - taillights in crystal glass look and animated turn signals)
- Package: Transport (Combi) (Double-sided boot mat - Media holder - Tablet holder - Waste bin - 3rd vehicle key - Net program in the luggage compartment and cargo elements - Luggage net partition - Variable loading floor)

- Comfort opening with electric tailgate operation (Combi)
- Package: Columbus infotainment package (Style, RS, Scout) (Columbus navigation system - Infotainment Online (3-year term) - 3 USB charging ports)
- Package: Safety (Style) (Fatigue detection - Front center airbag - Rear side airbags - Proactive occupant protection with rear impact detection)
- Wheels: 17" Pulsar AERO alloy wheels, black gloss turned (7J x 17, ET 46 with 205/55 R17 tires)
- Sunset (rear window and rear side windows tinted dark)

Brief expert findings

Documents submitted	At the time of the inspection, the vehicle registration certificate Part 2 (title) was available, but the vehicle registration certificate Part 1 (document) was not. (Copy)
VIN comparison	The vehicle identification number (VIN) was read from the vehicle and its conformity with the submitted documents was confirmed by the undersigned during the inspection.
Inspection	The inspection conditions were sufficient for the assessment of the vehicle. No lifting equipment or pit was available for inspecting the vehicle. Therefore, inspection of the vehicle's underside was only possible to a limited extent.
Test drive	No test drive/shunting maneuver was carried out during the inspection of the vehicle.
Engine function test	An engine test run was performed.

Value reducing factors

No.	Component group	Description
1	Front bumper	Front bumper (im Unfall Kalk. erhalten) - Scratch(es) - Paint
2	Rear bumper	Rear bumper (im Unfall Kalk. erhalten) - Scratch(es) - Paint
3	Equipment	Tirefit filler - Expired - Replace
4	Wheel / tyres	Alloy rim - rear right side - Scratch(es) - Loss in value
5	Side panel - rear right side	Side panel - Dent / paintcoat damage - Smart repair
6	Sill - right side	Sill - Deformed - Repair and paint
7	Headlight	Headlight - right side - Broken / torn - Replace

Missing parts

Description

Equipment - Umbrella



Accident damages

No. Accident

1 Side - left

Order/Scope of Order

An order was placed to prepare a sales report for the described vehicle. This report includes the following:

- Description of key vehicle information
- Documentation of equipment features
(*Delivery by third-party service providers*)
- Documentation of damage, defects, missing parts
- Documentation of prior damage, unrepaired prior damage, repainting
- A brief visual or functional inspection of the equipment details, if possible.
(*Functional testing of driver assistance systems is not included in the scope of services!*)
- a photographic documentation of the vehicle

Basis for the order

This product is based on the guidelines for vehicle returns and valuations published by Alphabet Fleet GmbH. The expert makes the specific findings in each individual case objectively, within the framework of the prescribed standards, based on their own expertise.

The vehicle inspection takes place in a fully assembled, unassembled state.

Damage or defects that can only be detected during disassembly/diagnostic work or through further investigation remain within the realm of prognostic risk. An increased risk exists due to concealed defects caused by fraudulent misrepresentation and which were not identifiable by the expert.

Damage or defects resulting from normal use or wear and tear of the vehicle will be accepted in accordance with the applicable standard.

There was no explicit identification or monetary consideration of the expected features within the product.

Features which, in their nature and extent, slightly exceed normal use but do not constitute unacceptable damage, will be documented and indicated as signs of wear, if applicable.

Damage or defects that, according to the applicable standard, can no longer be attributed to normal use or wear and tear are listed under "Value Reducing Factors" in the product description.

Depending on the product specification, a monetary ID can be provided. If this takes place, the costs can be 100% d or pro rata depending on the vehicle's age and mileage.

Previous damages

Non-repaired previous damages were found at the vehicle. The necessary repair costs are listed in the expert report or if necessary, are listed in detail in a separately enclosed repair cost calculation.

Comments

- Die Unterbodenbesichtigung war nur ebenerdig & eingeschränkt möglich. Mehrkosten möglich.

- Winterradsatz ist kein Bestandteil des Auslieferungsumfangs.



Figure 1: Diagonal front (left)



Figure 2: Diagonal front (right)



Figure 3: Diagonal rear (left)



Figure 4: Diagonal rear (right)



Figure 5: Interior - front



Figure 6: Interior - rear



Figure 7: Instrument cluster



Figure 8: Instrument panel



Figure 9: Interior 360° view



Figure 10: Cargo area

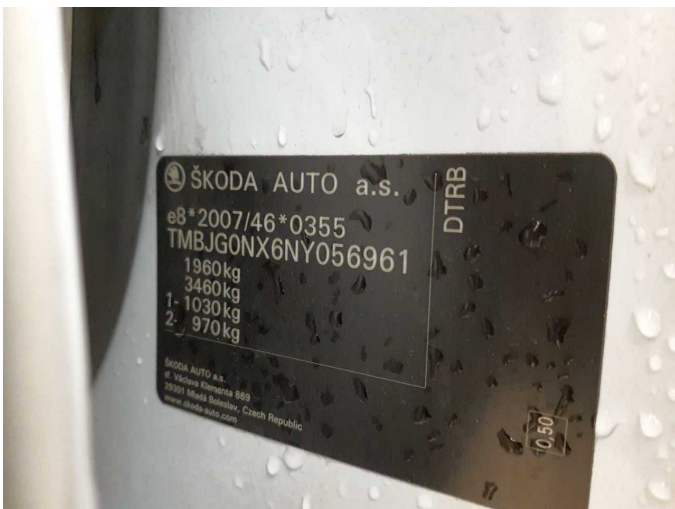


Figure 11: VIN



Figure 12: Mounted tyres



Figure 13: Documents



Figure 14: Documents



Figure 15: Documents



Figure 16: Additional tyres



Figure 17: Navigation



Figure 18: Misc.



Figure 19: Misc.



Figure 20: Misc.



Figure 21: Misc.



Figure 22: Misc.



Figure 23: Misc.



Figure 24: Misc.



Figure 25: Misc.



Figure 26: Misc.



Figure 27: Misc.

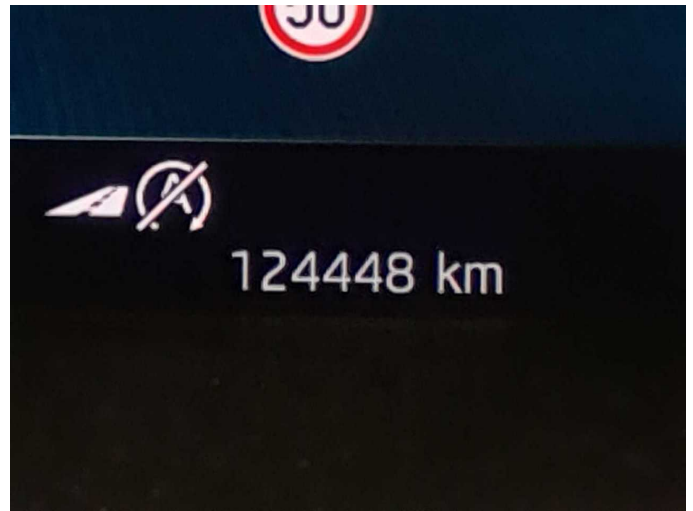


Figure 28: Misc.

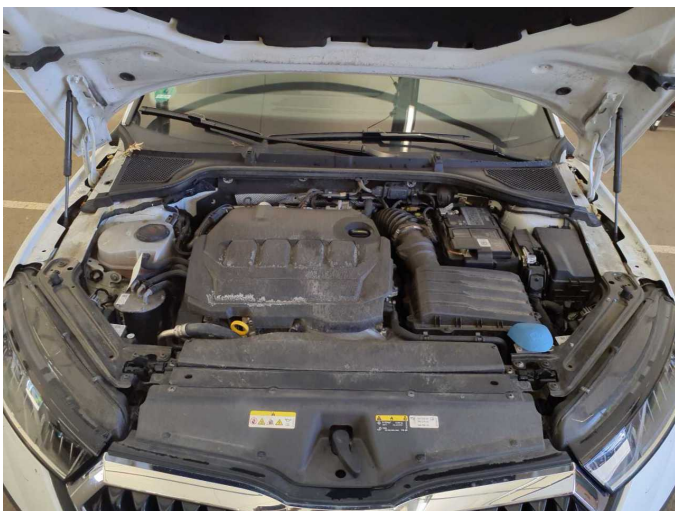


Figure 29: Misc.



Figure 30: Misc.



Figure 31: Misc.



Figure 32: Misc.

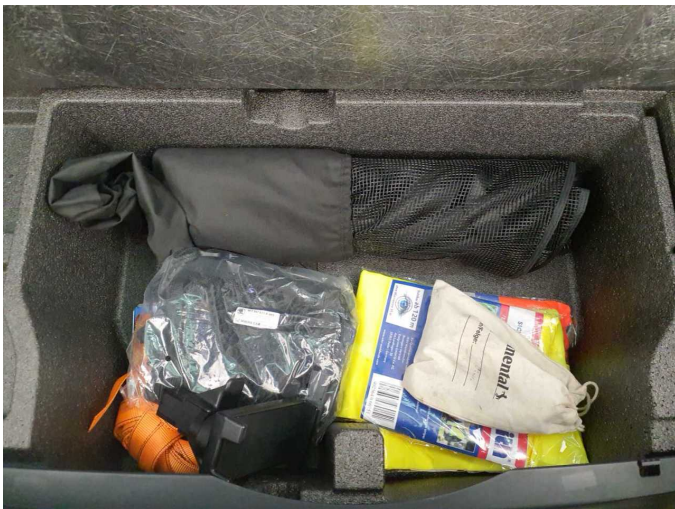


Figure 33: Misc.



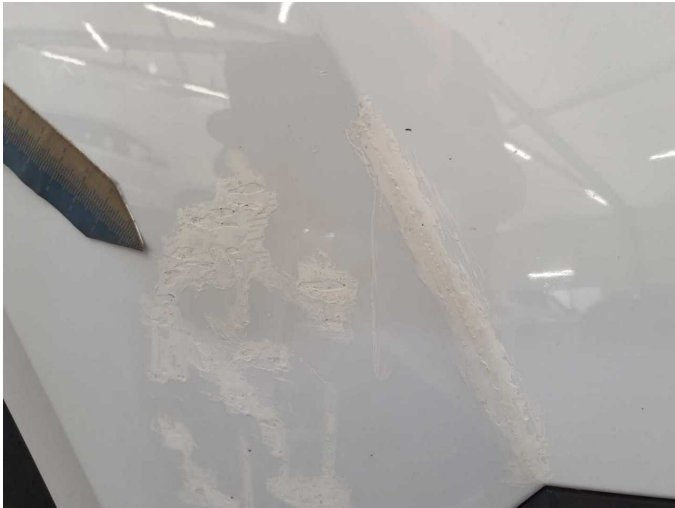
Figure 34: Misc.



Figure 35: Misc.



Damage 1: Front bumper: Front bumper (im Unfall Kalk. erhalten) - Scratch(es) - Paint



Damage 1: Front bumper: Front bumper (im Unfall Kalk. erhalten) - Scratch(es) - Paint



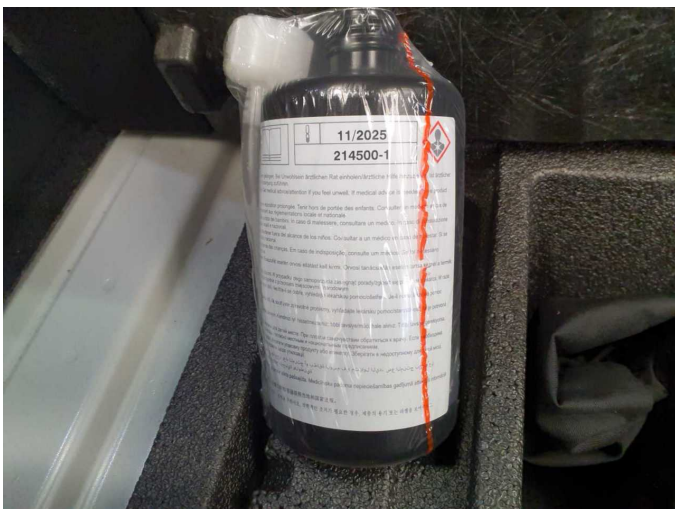
Damage 1: Front bumper: Front bumper (im Unfall Kalk. erhalten) - Scratch(es) - Paint



Damage 2: Rear bumper: Rear bumper (im Unfall Kalk. erhalten) - Scratch(es) - Paint



Damage 2: Rear bumper: Rear bumper (im Unfall Kalk. erhalten) - Scratch(es) - Paint



Damage 3: Equipment: Tirefit filler - Expired - Replace



Damage 4: Wheel / tyres: Alloy rim - rear right side - Scratch(es) - Loss in value



Damage 4: Wheel / tyres: Alloy rim - rear right side - Scratch(es) - Loss in value



Damage 5: Side panel - rear right side: Side panel - Dent / paintcoat damage - Smart repair



Damage 5: Side panel - rear right side: Side panel - Dent / paintcoat damage - Smart repair



Damage 5: Side panel - rear right side: Side panel - Dent / paintcoat damage - Smart repair



Damage 6: Sill - right side: Sill - Deformed - Repair and paint



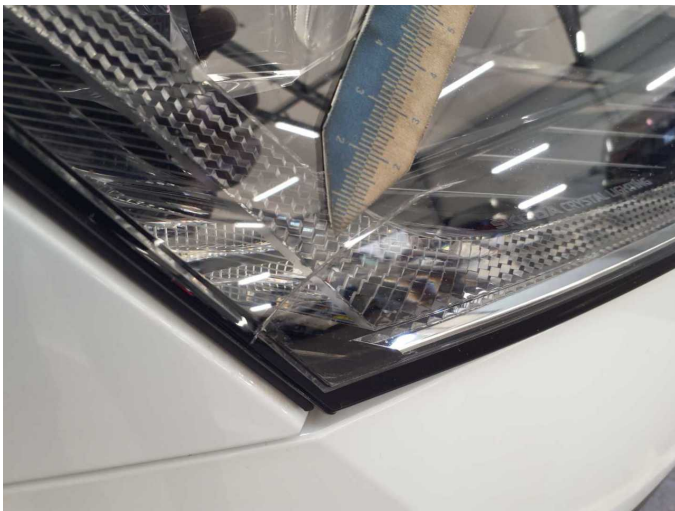
Damage 6: Sill - right side: Sill - Deformed - Repair and paint



Damage 6: Sill - right side: Sill - Deformed - Repair and paint



Damage 7: Headlight: Headlight - right side - Broken / torn - Replace



Damage 7: Headlight: Headlight - right side - Broken / torn - Replace



Damage 7: Headlight: Headlight - right side - Broken / torn - Replace



Missing part 1: Equipment: Umbrella - Missing - No deduction



Accident 1: Side - left



Accident 1: Side - left



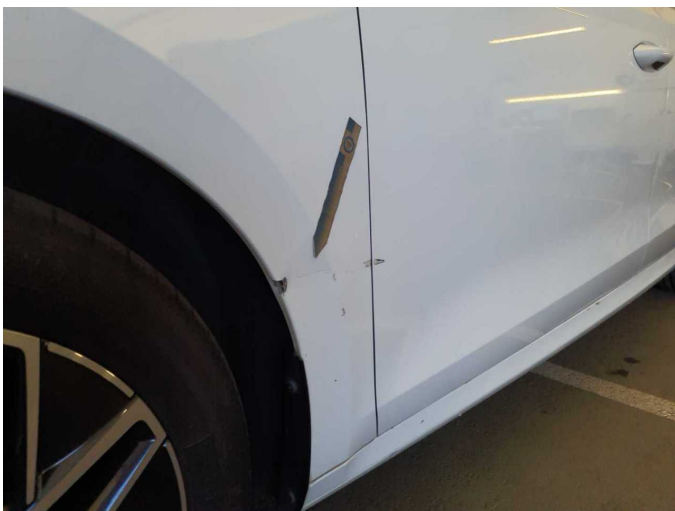
Accident 1: Side - left



Accident 1: Side - left



Accident 1: Side - left



Accident 1: Side - left



Accident 1: Side - left



Accident 1: Side - left



Accident 1: Side - left



Accident 1: Side - left



Accident 1: Side - left



Accident 1: Side - left



Accident 1: Side - left



Accident 1: Side - left



Accident 1: Side - left



Accident 1: Side - left



Accident 1: Side - left



Accident 1: Side - left



Accident 1: Side - left



Accident 1: Side - left



Accident 1: Side - left



Wartungshistorie

(gemäß Auftraggeber Informationen)

Fahrgestellnummer: TMBJG0NX6NY056961

Hersteller / Modell: SKODA SKODA Octavia Combi 2.0 TDI DSG Style

Datum	KM-Stand	Beschreibung
31.03.2026	122.424	Motoröl b. Wartung; Ölfilter ern; Regelwartungsdienst; Wartung Sonstiges
05.11.2025	76.294	HU + AU
02.07.2025	92.691	Kraftstofffilter ern; Luftfiltereinsatz ern; Motoröl b. Wartung; Ölfilter ern; Regelwartungsdienst; Systemtest/Eigendiagnose; Wartung Sonstiges
24.02.2025	79.903	Systemtest/Eigendiagnose
08.10.2024	61.938	Bremse Sonstiges; Bremsflüssigkeit; Bremsflüssigkeit ern; Bremsklötze hinten; Bremsklötze vorne; Motoröl b. Wartung; Ölfilter ern; Regelwartungsdienst; Wartung Sonstiges
04.08.2023	30.525	Motoröl b. Wartung; Regelwartungsdienst