

## Expertise

Protocol number: 46070413  
Order No. / Reference: 26553193  
Inspection date: 22 Jun 2026

Manufacturer: Ford

Model: Focus Turnier 1.5 EcoBlue Start-Stopp-System Aut. TITANIUM  
STYLE

VIN: WF0PXXGCHPNT50816



### Vehicle details

#### Manufacturer / Type / Model / Equipment

Ford Focus Turnier 1.5 EcoBlue Start-Stopp-System Aut. TITANIUM  
STYLE

**Vehicle Identification number** WF0PXXGCHPNT50816

**Mileage (Read)** 148,685 km

**First registration** 26 Jul 2022

**Number of holders** 1

**Next periodical technical inspection** 07/2027

(Report not on hand)

**Power / Engine displacement** 88 kw / 1,499 ccm

**Fuel type / Cylinder** Diesel / 4

**Gearbox / Number of gears** Automatic / 8

**Type of drive** Front drive

**Type of vehicle** Station wagon

**Colour / colour code** Frozen White

**Doors / Seats** 5 / 5

**Upholstery type** Cloth

**Colour of upholstery** Anthracite

**Re-import** no

**readiness to drive** Roadworthy





## Equipment

### Standard equipment

- Airbag: Passenger airbag deactivation
- Anti-lock braking system (ABS) with electronic brake force distribution (EBD)
- Tires: 6.5 J x 16 design wheels (4) with 205/60 R16 tires
- Hill start assist
- Roof rails, aluminum
- Diesel particulate filter (DPF)
- Third brake light
- Electronic Safety and Stability Program (ESP)
- Driver information system with on-board computer, color (10.7 cm screen diagonal)
- Electric parking brake with auto-hold function
- Ford EcoCoach
- FordPass Connect including eCall and Wi-Fi hotspot
- Speed limiter
- Transmission: 8-speed automatic transmission
- Back window, heater
- Interior lighting with LED technology
- Intelligent security system
- Air conditioning with automatic temperature control
- Radiator grille in titanium design
- LED taillights
- Steering wheel: 3-spoke design
- Make-up mirrors in driver and passenger sun visors
- Center console "Premium" front
- Navigation: Ford SYNC 3 with AppLink, 8" touchscreen and DAB/DAB+
- Upholstery: Cloth
- Pre-Collision Assist
- Tire Pressure Monitoring System (TPMS)
- paddle shifters on the steering wheel
- Headlight low beam
- Selective driving mode switch
- Seats: Passenger seat height adjustment, manual
- Seats: Driver's seat manually height-adjustable
- Seats: Driver's seat with adjustable lumbar support
- Start-stop system
- Carpet floor mats in the front
- Lashing eyes in the luggage compartment
- Immobiliser
- Central locking with remote control and remote luggage compartment release
- Ambient lighting, front
- Electrically folding exterior mirrors
- Attachment points behind the second row of seats for mounting the safety partition net
- Fabric headliner
- Roof spoiler painted in car color
- Tachometer
- Electronic shifter - rotary switch for automatic transmissions
- Lane keeping assist including lane keeping assist
- Electric windows front and rear
- Ford Easy Fuel
- Ford Power Start function
- luggage compartment cover
- Cruise control
- Illuminated glove compartment
- rear window wiper
- Interior mirror automatically dimming
- Isofix bracket
- Headrests (5)
- Paint finish: Solid
- LED headlights
- Steering wheel: Steering column, adjustable in height and reach
- MyKey key system (individually programmable second key)
- Emergency brake light
- Front and rear parking pilot system
- Post-Collision Assist
- Tire repair kit
- Rear seat backrest, foldable, 60:40 split
- Windscreen wipers with rain sensor
- Headlight assistant with day/night sensor
- Electromechanical speed-dependent power steering
- Seats: Driver and front passenger seat backrests with map mesh
- Seats: Front sports seats
- 12-volt power outlet in the luggage compartment
- Variable radiator air intake
- Warning system for unfastened seat belts for the 1st and 2nd rows of seats

### Extra equipment

- 3. KEYS/COVERS/MATS
- Paint finish: Solid color, special paint finish
- Safety partition net for luggage compartment
- SORTIMO RG 91501040
- Swiveling towbar (incl. ESP trailer stabilization)
- Package: Winter (heated windscreen - heated steering wheel - individually and variably heated front seats)



## Brief expert findings

Documents submitted	At the time of the inspection, the vehicle registration certificate Part 2 (title) was available, but the vehicle registration certificate Part 1 (document) was not. (Copy)
VIN comparison	The vehicle identification number (VIN) was read from the vehicle and its conformity with the submitted documents was confirmed by the undersigned during the inspection.
Inspection	The inspection conditions were sufficient for the assessment of the vehicle. Lifting equipment and/or a pit were available for examining the vehicle.
Test drive	No test drive/shunting maneuver was carried out during the inspection of the vehicle.
Engine function test	An engine test run was performed.
readiness to drive	The vehicle was roadworthy at the time of inspection.

## Value reducing factors

No.	Component group	Description
1	Seat - front	Protective cover - right side - Soiled - Replace
2	Seat - front	Protective Cover - left side - Broken / torn - Replace
3	Wheel / tyres	Wheel cover - rear right side - Scratched - Replace
4	Equipment	Vehicle key - Empty - Replace
5	Rear bumper	Rear bumper - Glued / labelled - De-glue / neutralise
6	Vehicle glazing	Windscreen (Mehrkosten möglich) - Stone chips - Smart repair
7	Engine	Engine (Ölspuren erkennbar) - Soiled - Diagnosed and repair if necessary
8	Side panel - rear right side	Side panel - Scratch(es) - Smart repair
9	Rear bumper	Rear bumper - Scratch(es) - Smart repair
10	Misc.	Inspection / maintenance - Due - Perform
11	Body	Body (Hagelschaden) - dent(s) - Repair

## Wear and tear

No.	Component group	Description
1	Vehicle glazing	Rear window (+Seitenscheiben, Tönungsfolie, ohne Nachweis) - Glued / labelled - No deduction
2	Trim / covers	Door trim - front left side - dent(s) - No deduction

The vehicle shows signs of wear and tear commensurate with its age and use.

## Order/Scope of Order

An order was placed to prepare a sales report for the described vehicle. This report includes the following:

- Description of key vehicle information
- Documentation of equipment features  
(*Delivery by third-party service providers*)
- Documentation of damage, defects, missing parts
- Documentation of prior damage, unrepaired prior damage, repainting
- A brief visual or functional inspection of the equipment details, if possible.  
(*Functional testing of driver assistance systems is not included in the scope of services!*)
- a photographic documentation of the vehicle



## Basis for the order

This product is based on the guidelines for vehicle returns and valuations published by Alphabet Fleet GmbH. The expert makes the specific findings in each individual case objectively, within the framework of the prescribed standards, based on their own expertise.

The vehicle inspection takes place in a fully assembled, unassembled state.

Damage or defects that can only be detected during disassembly/diagnostic work or through further investigation remain within the realm of prognostic risk. An increased risk exists due to concealed defects caused by fraudulent misrepresentation and which were not identifiable by the expert.

Damage or defects resulting from normal use or wear and tear of the vehicle will be accepted in accordance with the applicable standard.

There was no explicit identification or monetary consideration of the expected features within the product.

Features which, in their nature and extent, slightly exceed normal use but do not constitute unacceptable damage, will be documented and indicated as signs of wear, if applicable.

Damage or defects that, according to the applicable standard, can no longer be attributed to normal use or wear and tear are listed under "Value Reducing Factors" in the product description.

Depending on the product specification, a monetary ID can be provided. If this takes place, the costs can be 100% d or pro rata depending on the vehicle's age and mileage.

## Previous damages

No apparent prior damage that had been repaired could be found on the vehicle.

## Comments

- Die beigefügte Reparaturkostenkalkulation wurde nach bestem Wissen und Gewissen unter eingeschränkter Besichtigungsbedingung im demontagefreien Zustand erstellt. Es können aufgrund verdeckter Beschädigung erhebliche Mehrkosten und somit Abweichung der für den Unfall ausgewiesenen Reparaturkosten nicht ausgeschlossen werden.

- Winterradsatz ist kein Bestandteil des Auslieferungsumfanges.



Figure 1: Diagonal front (left)



Figure 2: Diagonal front (right)



Figure 3: Diagonal rear (left)



Figure 4: Diagonal rear (right)



Figure 5: Interior - front



Figure 6: Interior - rear



Figure 7: Instrument cluster



Figure 8: Instrument panel



Figure 9: Interior 360° view



Figure 10: Cargo area



Figure 11: VIN



Figure 12: Mounted tyres



Figure 13: Documents



Figure 14: Documents



Figure 15: Additional tyres

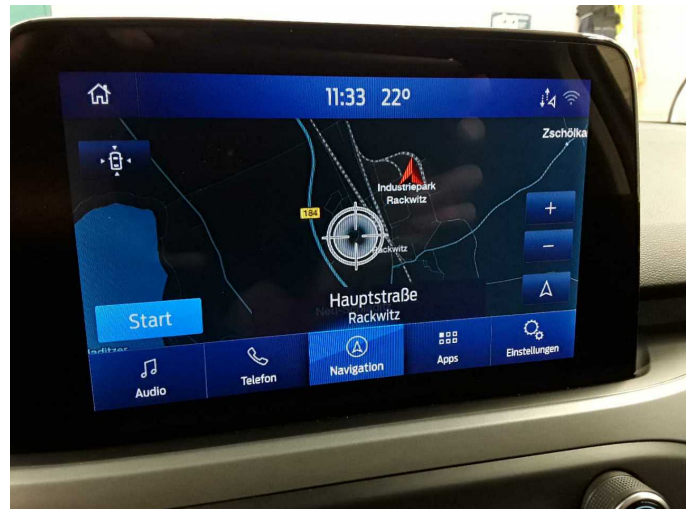


Figure 16: Navigation



Figure 17: Misc.



Figure 18: Misc.



Figure 19: Misc.



Figure 20: Misc.



Figure 21: Misc.



Figure 22: Misc.



Figure 23: Misc.



Figure 24: Misc.



Figure 25: Misc.



Figure 26: Misc.



Figure 27: Misc.



Figure 28: Misc.



Figure 29: Misc.



Figure 30: Misc.



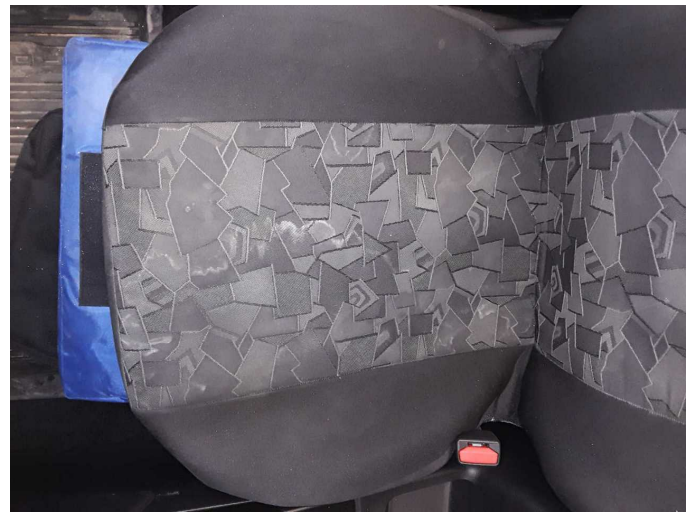
Figure 31: Misc.



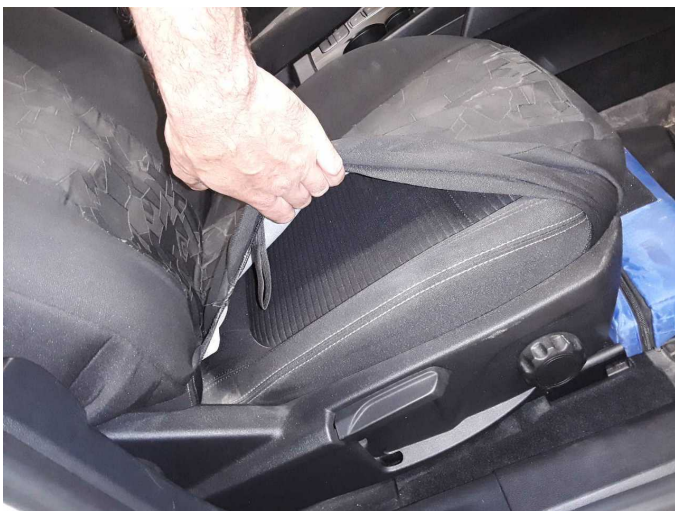
Figure 32: Misc.



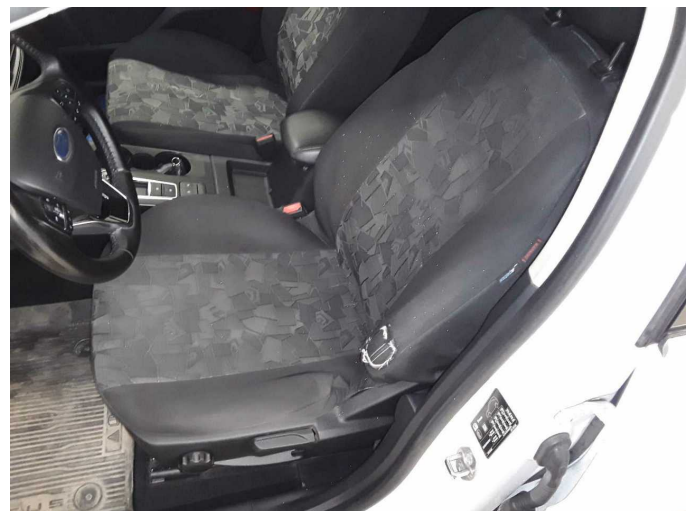
Damage 1: Seat - front: Protective cover - right side - Soiled - Replace



Damage 1: Seat - front: Protective cover - right side - Soiled - Replace



Damage 1: Seat - front: Protective cover - right side - Soiled - Replace



Damage 2: Seat - front: Protective Cover - left side - Broken / torn - Replace



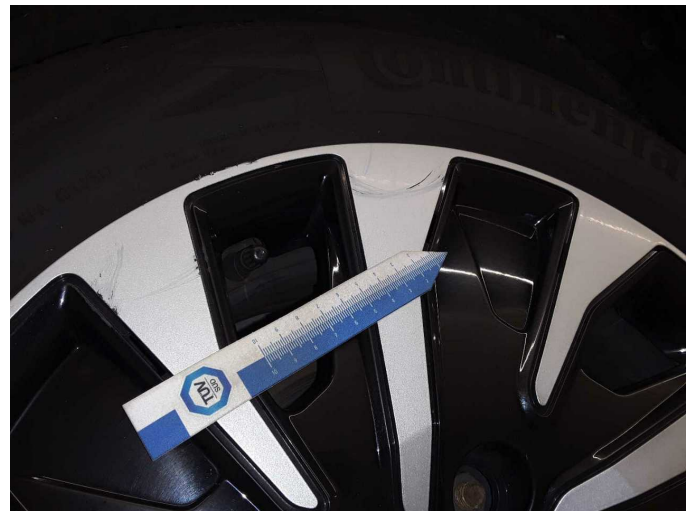
**Damage 2:** Seat - front: Protective Cover - left side - Broken / torn - Replace



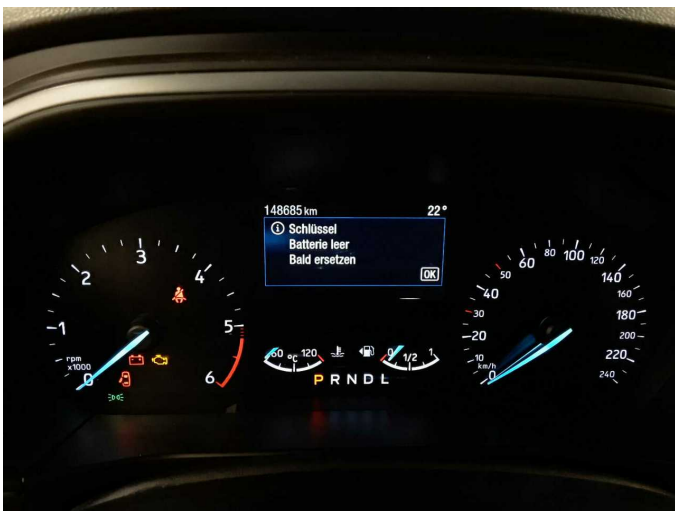
**Damage 2:** Seat - front: Protective Cover - left side - Broken / torn - Replace



**Damage 3:** Wheel / tyres: Wheel cover - rear right side - Scratched - Replace



**Damage 3:** Wheel / tyres: Wheel cover - rear right side - Scratched - Replace



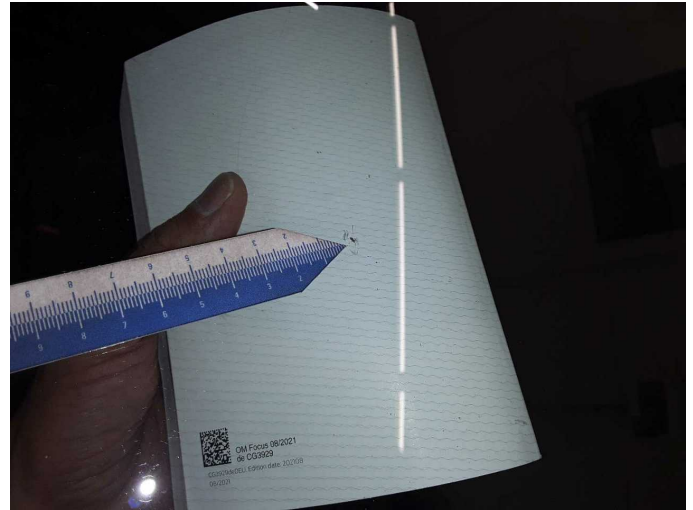
**Damage 4:** Equipment: Vehicle key - Empty - Replace



**Damage 5:** Rear bumper: Rear bumper - Glued / labelled - De-glue / neutralise



**Damage 6:** Vehicle glazing: Windscreen (Mehrkosten möglich) - Stone chips - Smart repair



**Damage 6:** Vehicle glazing: Windscreen (Mehrkosten möglich) - Stone chips - Smart repair



**Damage 7:** Engine: Engine (Ölspuren erkennbar) - Soiled - Diagnosed and repair if necessary



**Damage 7:** Engine: Engine (Ölspuren erkennbar) - Soiled - Diagnosed and repair if necessary



**Damage 7:** Engine: Engine (Ölspuren erkennbar) - Soiled - Diagnosed and repair if necessary



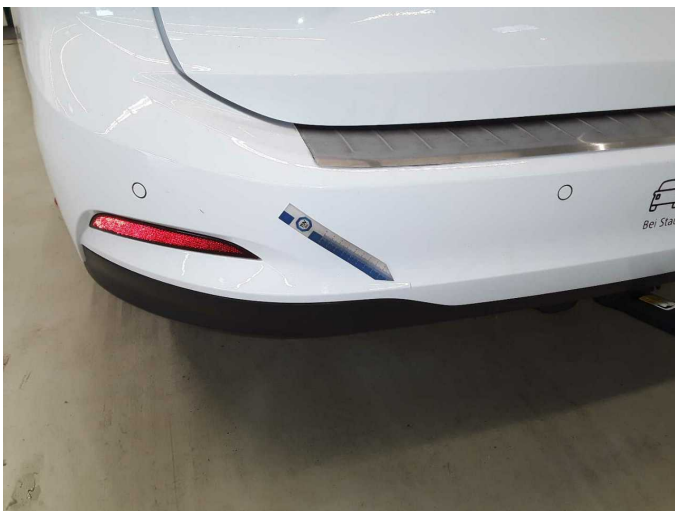
**Damage 7:** Engine: Engine (Ölspuren erkennbar) - Soiled - Diagnosed and repair if necessary



**Damage 8:** Side panel - rear right side: Side panel - Scratch(es) - Smart repair



**Damage 8:** Side panel - rear right side: Side panel - Scratch(es) - Smart repair



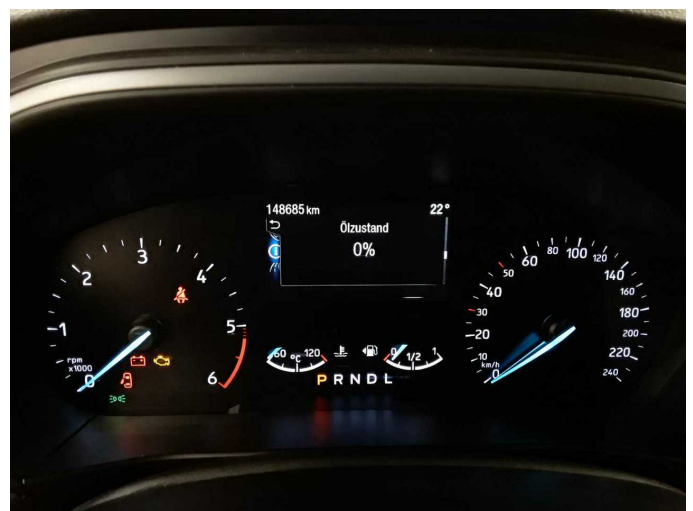
**Damage 9:** Rear bumper: Rear bumper - Scratch(es) - Smart repair



**Damage 9:** Rear bumper: Rear bumper - Scratch(es) - Smart repair



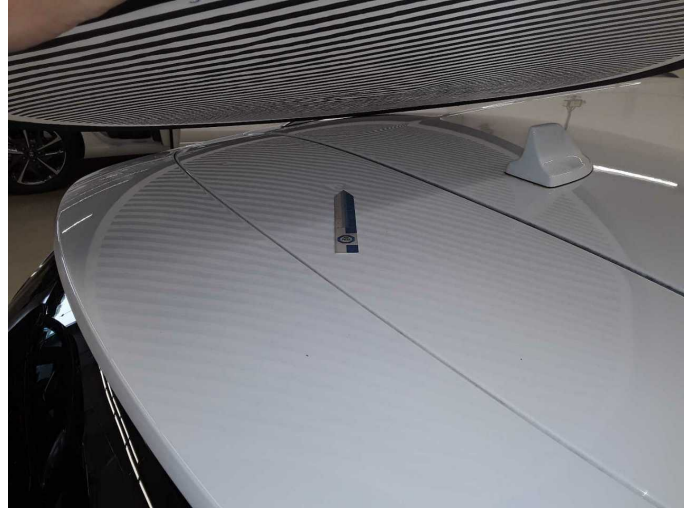
**Damage 9:** Rear bumper: Rear bumper - Scratch(es) - Smart repair



**Damage 10:** Misc.: Inspection / maintenance - Due - Perform



**Damage 11:** Body: Body (Hagelschaden) - dent(s) - Repair



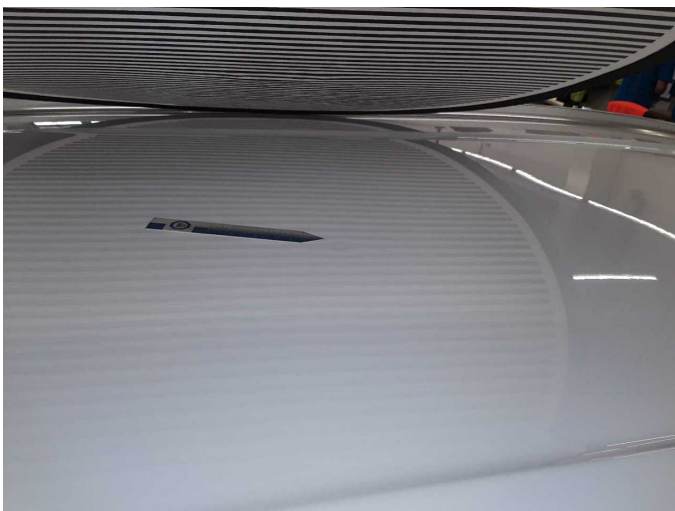
**Damage 11:** Body: Body (Hagelschaden) - dent(s) - Repair



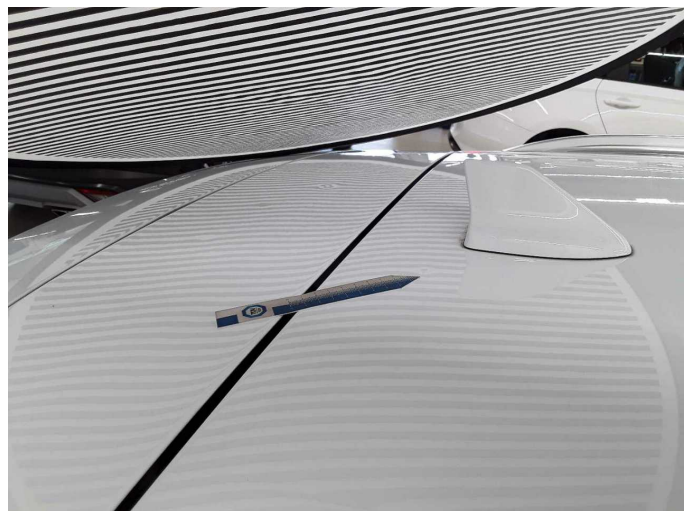
**Damage 11:** Body: Body (Hagelschaden) - dent(s) - Repair



**Damage 11:** Body: Body (Hagelschaden) - dent(s) - Repair



**Damage 11:** Body: Body (Hagelschaden) - dent(s) - Repair



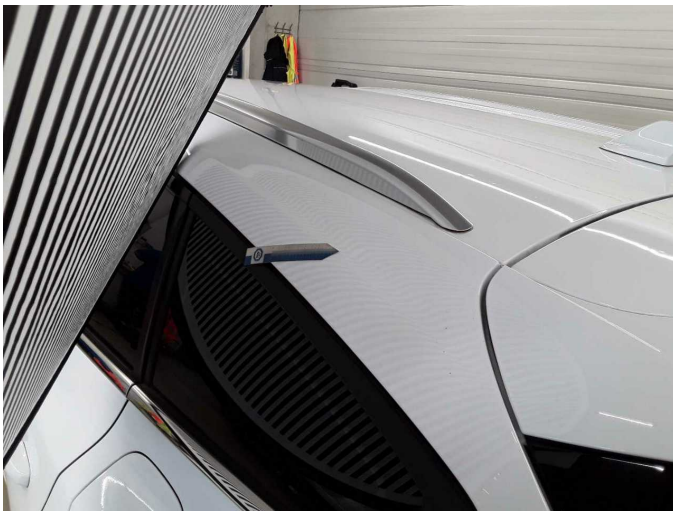
**Damage 11:** Body: Body (Hagelschaden) - dent(s) - Repair



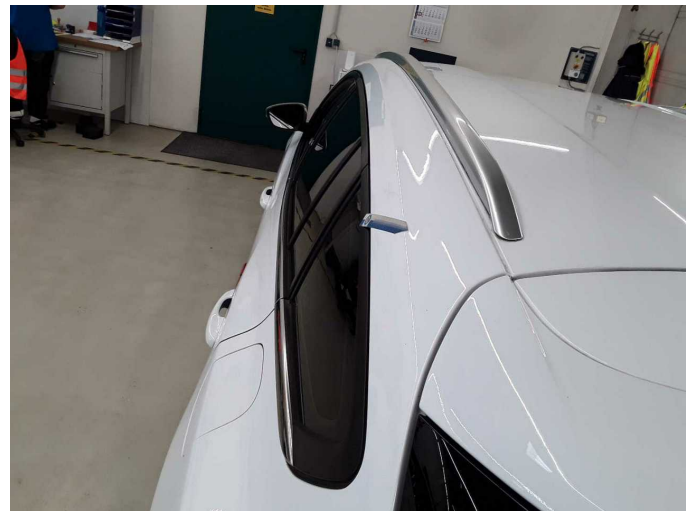
**Damage 11:** Body: Body (Hagelschaden) - dent(s) - Repair



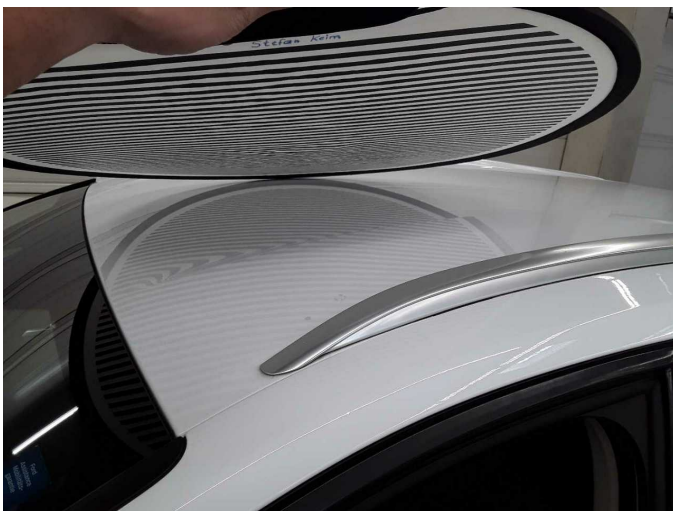
**Damage 11:** Body: Body (Hagelschaden) - dent(s) - Repair



**Damage 11:** Body: Body (Hagelschaden) - dent(s) - Repair



**Damage 11:** Body: Body (Hagelschaden) - dent(s) - Repair



**Damage 11:** Body: Body (Hagelschaden) - dent(s) - Repair



**Damage 11:** Body: Body (Hagelschaden) - dent(s) - Repair



**Damage 11:** Body: Body (Hagelschaden) - dent(s) - Repair



**Damage 11:** Body: Body (Hagelschaden) - dent(s) - Repair



**Damage 11:** Body: Body (Hagelschaden) - dent(s) - Repair



**Damage 11:** Body: Body (Hagelschaden) - dent(s) - Repair



**Damage 11:** Body: Body (Hagelschaden) - dent(s) - Repair



**Wear and tear 1:** Vehicle glazing: Rear window (+Seitenscheiben, Tönungsfolie, ohne Nachweis) - Glued / labelled - No deduction



**Wear and tear 1:** Vehicle glazing: Rear window (+Seitenscheiben, Tönungsfolie, ohne Nachweis) - Glued / labelled - No deduction



**Wear and tear 1:** Vehicle glazing: Rear window (+Seitenscheiben, Tönungsfolie, ohne Nachweis) - Glued / labelled - No deduction



**Wear and tear 2:** Trim / covers: Door trim - front left side - dent(s) - No deduction



# Wartungshistorie

(gemäß Auftraggeber Informationen)

Fahrgestellnummer: WF0PXXGCHPNT50816  
Hersteller / Modell: FORD FORD Focus Turnier 1.5 EcoBlue Start-Stopp-System Aut.  
TITANIUM STYLE

Datum	KM-Stand	Beschreibung
15.01.2026	132.154	Bremsklötze hinten; Bremsscheiben + Klötze h; Bremsscheiben hinten
24.09.2025	120.352	Batterie ern
01.09.2025	117.221	Kraftstofffilter ern; Luftfiltereinsatz ern; Motoröl b. Wartung; Ölfilter ern; Regelwartungsdienst; Wartung Sonstiges
22.07.2025	112.140	AU
11.06.2025	108.557	Bremsscheiben + Klötze v
11.12.2024	91.260	Bremsflüssigkeit; Bremsflüssigkeit ern; Motoröl b. Wartung; Ölfilter ern; Regelwartungsdienst; Wartung Sonstiges
25.04.2024	59.747	Kraftstofffilter ern; Luftfiltereinsatz ern; Motoröl b. Wartung; Ölfilter ern; Regelwartungsdienst; Wartung Sonstiges
24.11.2023	30.575	Motoröl b. Wartung; Ölfilter ern; Regelwartungsdienst; Wartung Sonstiges