

## Expertise

Protocol number: 45519027  
Order No. / Reference: 26427231  
Inspection date: 12 May 2026

Manufacturer: Audi

Model: A4 Avant 35 TDI S tronic advanced

VIN: WAUZZZF43PA017727



### Vehicle details

#### Manufacturer / Type / Model / Equipment

Audi A4 Avant 35 TDI S tronic advanced

**Vehicle Identification number** WAUZZZF43PA017727

**Mileage (Read)** 160,599 km

**First registration** 14 Oct 2022

**Number of holders** 1

**Power / Engine displacement** 120 kw / 1,968 ccm

**Fuel type / Cylinder** Hybrid Diesel / E / 4

**Gearbox / Number of gears** Automatic / 7

**Type of drive** Front drive

**Type of vehicle** Station wagon

**Colour / colour code** Florettsilber Metallic

**Doors / Seats** 5 / 5

**Upholstery type** Artificial leather

**Colour of upholstery** Black-Anthracite

**Vehicle with smoke odor** no

**readiness to drive** Roadworthy



Vehicle details			
<b>Maintenance booklet / proof</b>	digital proof / complete	<b>Next maintenance in</b>	8,900 km
<b>Last service on / at</b>	03/2026 at 156,819 km		
<b>Key is / should be</b>	2 / 2	<b>FZG documents</b>	ZB#2 (B) was available (copy), ZB#1 (S) was not available.
		<b>Letter No.</b>	GM771128
<b>Previous damage / Accident</b>	Detectable	<b>Repainting</b>	None detectable
<b>Inspection conditions</b>	sufficient	<b>Lifting equipment / pit</b>	yes
<b>Test drive</b>	short drive on the company premises	<b>Engine function test</b>	Performed
<b>readiness to drive</b>	Roadworthy		
<b>Manufacturer key number/ type code number</b>	0588 / BPK 00980		
<b>Emission standard</b>	EURO6;WLTP;AP;PI/CI; M, N1 I	<b>fine dust sticker</b>	
<b>Permitted total weight</b>	2,165 kg	<b>Empty weight</b>	

## Tyres

Mounted tyres				
#	Tyre size	Type of tyre	Manufacturer	Tread depth
1)	225/50 R17 98Y	Summer tyres on Light alloy	Pirelli	7mm / 7mm
2)	225/50 R17 98Y	Summer tyres on Light alloy	Pirelli	5mm / 5mm
Additional tyres				
#	Tyre size	Type of tyre	Manufacturer	Tread depth
1)	225/50 R17 98H	Winter tyres on Light alloy	Pirelli	5mm / 5mm
2)	225/50 R17 98H	Winter tyres on Light alloy	Pirelli	5mm / 3mm
Replacement				
Typ	Tyre size	Type of tyre	Manufacturer	Tread depth
	Tirefit	Expiration date 07/2026		

**Legend:** Tread depth information for the left tire is listed first, for the right tire it is listed second on the axle in the direction of travel.



## Equipment

### Standard equipment

- AdBlue tank (12 liters)
- Airbag: Front side airbags and head airbag system
- Anti-lock braking system (ABS)
- Audi connect emergency call & service with Audi connect Remote & Control
- Exterior mirror housings in body color
- third brake light, raised
- Black roof rails
- Diesel particulate filter (DPF)
- Door sill trims with aluminum inlay at the front
- Electronic Differential Lock (EDS)
- Driver Information System
- electric window regulator
- Remote key, without SafeLock
- Cruise control system with speed limiter
- rear window wiper
- Interior lighting
- Child lock
- Automatic air conditioning
- boot floor mat
- Loading floor
- LED taillights
- Steering column, manually adjustable in height and axis
- Light/rain sensor
- front center armrest
- Wheel: Alloy wheels, 5-arm dynamic
- Radio: MMI Radio plus
- Radio accessories: Digital radio reception (DAB)
- Tire repair kit
- Electromechanical power steering
- Seats: Standard front seats
- Seats: Front seats manually adjustable
- First aid kit with warning triangle
- Electronic immobilizer
- Central locking "Keyless-Go" without deadbolt
- Airbag for driver and front passenger
- Accent areas matte black
- Traction control (ASR)
- Audi pre sense city
- Electrically adjustable and heated exterior mirrors
- Vehicle tool kit
- Fabric headliner
- Decorative inlays diamond lacquer silver grey
- Tachometer
- Electromechanical parking brake
- Electronic Stability Control (ESC)
- Chassis: Standard chassis
- Window channel strips in black (rubber)
- front and rear floor mats
- Transmission: S tronic 7-speed
- Top speed limited to 210 km/h
- Interior mirror dimming
- ISOFIX child seat attachment and Top Tether for the outer rear seats
- Headrests (5)
- Manual cargo cover
- Steering wheel: Leather steering wheel in 3-spoke design with multifunction
- Mild hybrid
- Non-smoking version
- Wheel: Tires optimized for rolling resistance, speed-limited
- Radio accessories: 8 speakers (passive) front and rear
- Tire pressure monitoring system
- Headlights using LED technology
- Fabric seat covers Index
- Seats: Rear seat backrest foldable
- Start-stop system
- Glazing: Windscreen in heat-insulating and acoustic glazing



## Extra equipment

- Business Package (MMI Navigation plus with MMI touch (including driver information system with color display) - Audi phone box - Leather steering wheel in 3-spoke design with multifunction plus - Heated front seats - Automatically dimming, frameless interior mirror - Electrically adjustable, heated and folding exterior mirrors, automatically dimming on both sides - Rear parking aid - High-beam assistant - Manual sunshade for the rear door windows)
- Comfort center armrest at the front (adjustable in tilt and longitudinally sliding or completely foldable)
- Electrically operated tailgate (The tailgate can be opened electrically by pressing the button on the vehicle key, in the driver's door, or the soft-touch button on the tailgate handle. Closing the tailgate is just as easy and convenient: simply press the button on the inside of the tailgate, the button in the driver's door, or the button on the vehicle key. A soft-close mechanism makes manual closing easier when necessary.)
- Gloss package (roof frame and window channel strips in anodized aluminum)
- Headrests: variable headrests for front seats (with manual adjustment of headrest height and distance)
- High beam assist
- Paint finish: Metallic
- Roof rails in aluminium (for transport, stable and aerodynamically shaped, in aluminium)
- Seat covers in leather/artificial leather mono.pur 550 combination (for standard seats: - center section of the front seats and outer rear seats, driver's side bolster in the entry area in leather - side bolsters, headrests, center armrest and middle rear seat in artificial leather mono.pur 550)
- Seats: 4-way lumbar support (electrically adjustable, horizontally and vertically)
- Seats: Driver's seat electrically adjustable (with electric adjustment of seat height, seat longitudinal position, seat tilt and backrest tilt for the driver's seat - passenger seat manually adjustable)
- Extendable sun visor (on driver and passenger side)
- Front seat heating
- Hold assist (holds the vehicle indefinitely after stopping on typical road inclines and declines. The system is activated by pressing a button and allows the driver to start off comfortably.)
- LED headlights and LED taillights with dynamic turn signals (daytime running lights - low beam - high beam - position lights - turn signals - cornering lights (lateral illumination in tight curves and when turning) - all-weather lights (to reduce glare in poor visibility conditions) - maneuvering lights (illuminating the swivel area when reversing) - motorway lights (extended range at high speeds) - static cornering lights - automatic dynamic headlight range control - intersection lights (in conjunction with MMI Navigation plus))
- Package: Ambient Lighting Package Plus (3 predefined color profiles; additional interactive and individual color profiles. The interactive color profile is controlled by the Audi drive select modes. 30 colors are available for the individual color profile. The color adjustments apply to the following contour and ambient lighting elements: - Entry lights on the underside of the rear doors (white) - Rear footwell lighting - Front cupholders (multicolor) - Ambient door lighting front/rear (multicolor) - Contour lighting (multicolor))
- Parking aid plus (Acoustic and visual parking aid front and rear assists with parking and maneuvering. With selective, visual display of the distance to detected objects in the MMI display, depending on the current steering angle and direction of travel. The virtual lane indicator also provides lateral guide lines that are calculated in advance based on the currently selected steering angle. Measurement is carried out by ultrasonic sensors, discreetly integrated into the bumpers.)
- Power outlet: USB charging port for rear passengers (2 USB charging ports for rear passengers in the rear center console - instead of 12-volt socket in the rear (from non-smoking version))

## Retrofitted equipment

- Audi phone box deactivation

## Brief expert findings

Documents submitted	At the time of the inspection, the vehicle registration certificate Part 2 (title) was available, but the vehicle registration certificate Part 1 (document) was not. (Copy)
VIN comparison	The vehicle identification number (VIN) was read from the vehicle and its conformity with the submitted documents was confirmed by the undersigned during the inspection.
Inspection	The inspection conditions were sufficient for the assessment of the vehicle. Lifting equipment and/or a pit were available for examining the vehicle.
Test drive	A short maneuvering and shunting exercise was carried out on the company premises.
Engine function test	An engine test run was performed.
readiness to drive	The vehicle was roadworthy at the time of inspection.



## Value reducing factors

No.	Component group	Description
1	Misc.	Main inspection - No evidence - No deduction
2	Door - rear left side	Door - dent(s) - Smart repair
3	Roof	Roof rail - left side - Stone chips - Smart repair
4	Vehicle glazing	Windscreen - Stone chips - Smart repair
5	Front bumper	Cover bumper - front (Rechts) - Broken / torn - Replace
6	Side panel - rear right side	Side panel (An Kante) - dent(s) - Repair and paint

## Wear and tear

No.	Component group	Description
1	2nd wheel set	1 tyre (Profiltiefe 3mm) - Does not meet the leasing specifications - No deduction
2	Door - front left side	Door - dent(s) - No deduction

The vehicle shows signs of wear and tear commensurate with its age and use.

## Previous damages

No.	Previous damage	Extent of damage (Net)
1	Underbody, Provided by user / customer, from 19 Mar 2026	1.470,57 €
2	Front, Provided by user / customer, from 24 Mar 2025	1.582,51 €

## Order/Scope of Order

An order was placed to prepare a sales report for the described vehicle. This report includes the following:

- Description of key vehicle information
- Documentation of equipment features  
(*Delivery by third-party service providers*)
- Documentation of damage, defects, missing parts
- Documentation of prior damage, unrepaired prior damage, repainting
- A brief visual or functional inspection of the equipment details, if possible.  
(*Functional testing of driver assistance systems is not included in the scope of services!*)
- a photographic documentation of the vehicle



## Basis for the order

This product is based on the guidelines for vehicle returns and valuations published by Alphabet Fleet GmbH. The expert makes the specific findings in each individual case objectively, within the framework of the prescribed standards, based on their own expertise.

The vehicle inspection takes place in a fully assembled, unassembled state.

Damage or defects that can only be detected during disassembly/diagnostic work or through further investigation remain within the realm of prognostic risk. An increased risk exists due to concealed defects caused by fraudulent misrepresentation and which were not identifiable by the expert.

Damage or defects resulting from normal use or wear and tear of the vehicle will be accepted in accordance with the applicable standard.

There was no explicit identification or monetary consideration of the expected features within the product.

Features which, in their nature and extent, slightly exceed normal use but do not constitute unacceptable damage, will be documented and indicated as signs of wear, if applicable.

Damage or defects that, according to the applicable standard, can no longer be attributed to normal use or wear and tear are listed under "Value Reducing Factors" in the product description.

Depending on the product specification, a monetary ID can be provided. If this takes place, the costs can be 100% d or pro rata depending on the vehicle's age and mileage.

## Previous damages

According to available information previous damages were repaired at the vehicle. Traces of repairs, which allow conclusions about the area of repair, were not recognizable during the inspection.

## Comments

Fahrzeug weist erhöhte Lackwerte auf.



Figure 1: Diagonal front (left)



Figure 2: Diagonal front (right)



Figure 3: Diagonal rear (left)



Figure 4: Diagonal rear (right)



Figure 5: Interior - front



Figure 6: Interior - rear



Figure 7: Instrument cluster



Figure 8: Instrument panel



Figure 9: Interior 360° view



Figure 10: Cargo area

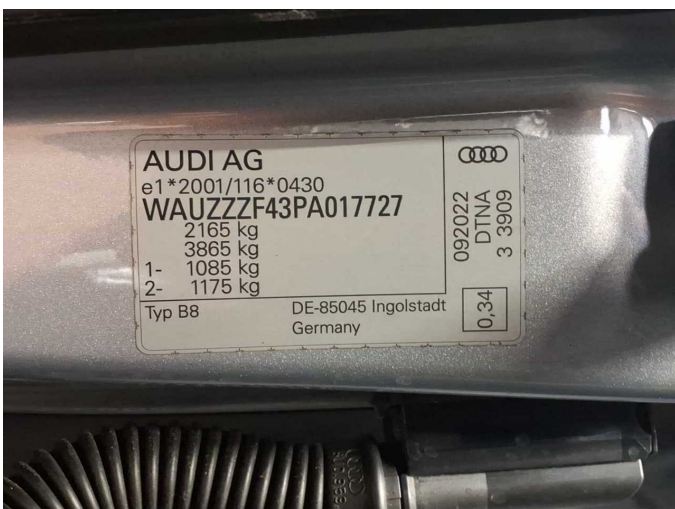


Figure 11: VIN



Figure 12: Mounted tyres



Figure 13: Documents

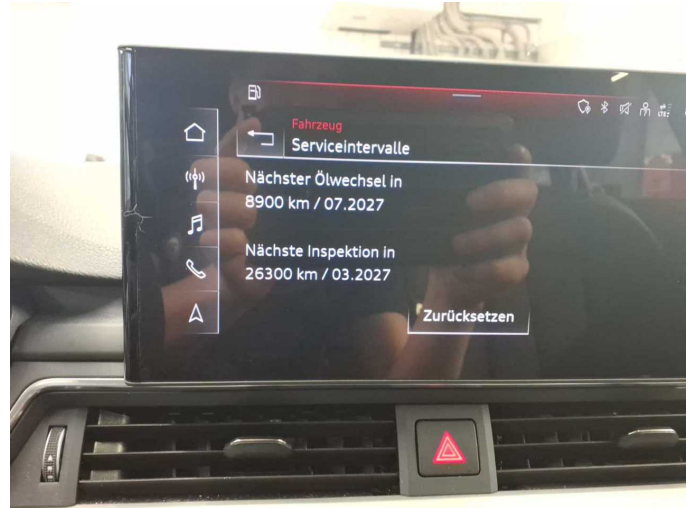


Figure 14: Documents



Figure 15: Additional tyres

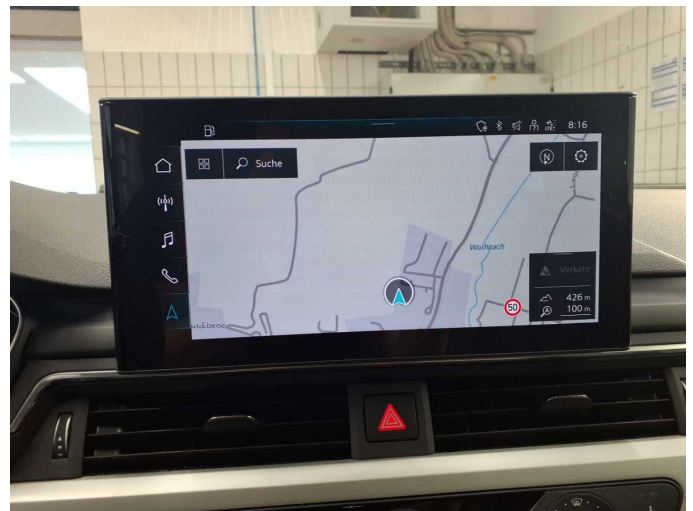


Figure 16: Navigation



Figure 17: Misc.



Figure 18: Misc.



Figure 19: Misc.



Figure 20: Misc.



Figure 21: Misc.



Figure 22: Misc.

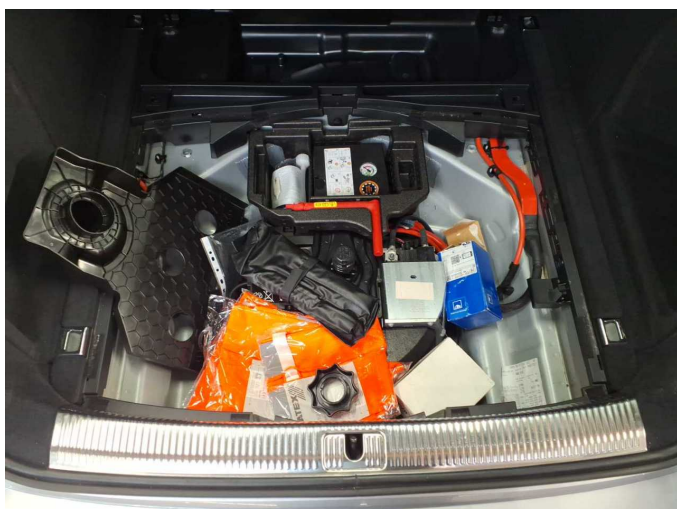


Figure 23: Misc.



Figure 24: Misc.



Figure 25: Misc.



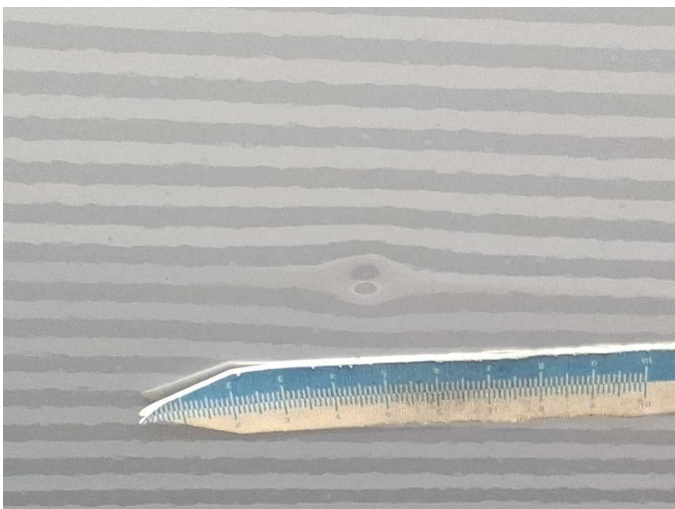
Figure 26: Misc.



Damage 2: Door - rear left side: Door - dent(s) - Smart repair



Damage 2: Door - rear left side: Door - dent(s) - Smart repair



Damage 2: Door - rear left side: Door - dent(s) - Smart repair



Damage 3: Roof: Roof rail - left side - Stone chips - Smart repair



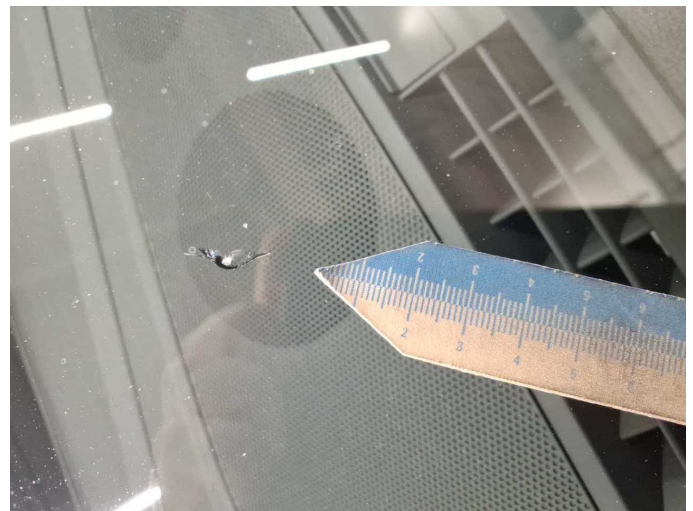
**Damage 3:** Roof: Roof rail - left side - Stone chips - Smart repair



**Damage 4:** Vehicle glazing: Windscreen - Stone chips - Smart repair



**Damage 4:** Vehicle glazing: Windscreen - Stone chips - Smart repair



**Damage 4:** Vehicle glazing: Windscreen - Stone chips - Smart repair



**Damage 5:** Front bumper: Cover bumper - front (Rechts) - Broken / torn - Replace



**Damage 5:** Front bumper: Cover bumper - front (Rechts) - Broken / torn - Replace



**Damage 6:** Side panel - rear right side: Side panel (An Kante) - dent(s) - Repair and paint



**Damage 6:** Side panel - rear right side: Side panel (An Kante) - dent(s) - Repair and paint



**Damage 6:** Side panel - rear right side: Side panel (An Kante) - dent(s) - Repair and paint



# Wartungshistorie

(gemäß Auftraggeber Informationen)

Fahrgestellnummer: WAUZZZF43PA017727  
Hersteller / Modell: AUDI AUDI A4 Avant 35 TDI S tronic advanced

Datum	KM-Stand	Beschreibung
19.03.2026	156.819	Regelwartungsdienst; Wartung Sonstiges
20.01.2026	146.999	Motoröl b. Wartung; Ölwechsel
20.11.2025	140.830	Bremse Sonstiges; Bremsklötze hinten; Bremsklötze vorne; Bremsscheiben hinten; Bremsscheiben vorne
21.10.2025	134.469	Getriebeöl ern/prüfen
10.10.2025	132.595	AU
26.08.2025	126.880	Kraftstofffilter ern; Motoröl b. Wartung; Ölfilter ern; Regelwartungsdienst; Wartung Sonstiges; Wartung Sonstiges
10.04.2025	106.360	Motoröl b. Wartung; Ölfilter ern; Ölwechsel; Wartung Sonstiges
16.12.2024	95.376	Bremsflüssigkeit; Bremsflüssigkeit ern; Luftfiltereinsatz ern; Regelwartungsdienst
23.10.2024	86.106	Bremsbelagfühler ern; Bremse Sonstiges; Bremsklötze hinten; Bremsscheiben hinten
20.09.2024	83.165	Motoröl b. Wartung; Ölfilter ern; Regelwartungsdienst; Wartung Sonstiges
17.06.2024	70.865	Bremse Sonstiges; Bremsklötze vorne; Bremsscheiben vorne
20.03.2024	61.301	Kraftstofffilter ern; Motoröl b. Wartung; Ölfilter ern; Regelwartungsdienst; Wartung Sonstiges
18.09.2023	41.385	Motoröl b. Wartung; Ölfilter ern; Ölwechsel; Wartung Sonstiges
06.07.2023	30.325	Motoröl b. Wartung; Regelwartungsdienst
05.05.2023	22.290	Motoröl b. Wartung; Regelwartungsdienst