

Expertise

Protocol number: 45762109
Order No. / Reference: 26166054
Inspection date: 28 May 2026

Manufacturer: Volvo

Model: XC60 B4 D AWD Geartronic Momentum Pro

VIN: YV1UZZK5VCM1819536



Vehicle details

Manufacturer / Type / Model / Equipment

Volvo XC60 B4 D AWD Geartronic Momentum Pro

Vehicle Identification number	YV1UZZK5VCM1819536
Mileage (Read)	174,364 km
First registration	25 Mar 2021
Number of holders	1
Next periodical technical inspection	03/2026 (Report not on hand)

Power / Engine displacement	145 kw / 1,969 ccm
Fuel type / Cylinder	Hybrid Diesel / E / 4
Gearbox / Number of gears	Automatic / 8
Type of drive	All-wheel drive
Type of vehicle	SUV

Colour / colour code	Black Stone
Doors / Seats	5 / 5
Upholstery type	Cloth
Colour of upholstery	Anthracite

Re-import	no
readiness to drive	Not roadworthy / not moveable



Vehicle details

Maintenance booklet / proof	digital proof / complete	Next maintenance in	17,251 km
Last service on / at	08/2025 at 161,614 km		
Key is / should be	1 / 2	FZG documents	ZB#2 (B) was available (copy), ZB#1 (S) was not available.
		Letter No.	GA550027
Previous damage / Accident	Detectable	Repainting	None detectable
Inspection conditions	Conditional: Light/moisture/dirt	Lifting equipment / pit	No
Test drive	Not performed	Engine function test	Not possible
readiness to drive	Not roadworthy / not moveable		
Manufacturer key number/ type code number	9101 / BPQ 00018		
Emission standard	EURO6;WLTP;AP;PI/CI; M, N1 I	fine dust sticker	
Permitted total weight	2,540 kg	Empty weight	

Tyres

Mounted tyres

#	Tyre size	Type of tyre	Manufacturer	Tread depth
1)	235/60 R18 107H	Winter tyres on Light alloy	Continental	7mm / 7mm
2)	235/60 R18 107H	Winter tyres on Light alloy	Continental	7mm / 7mm

Legend: Tread depth information for the left tire is listed first, for the right tire it is listed second on the axle in the direction of travel.

TÜV SÜD Auto Partner GmbH
Wiesenring 2
04159 Leipzig

Inspection location
Hartmann Fleet Professionals GmbH
Industriestraße 11
36272 Niederaula



Equipment



Standard equipment

- ABS - Anti-lock braking system with electronic brake-force distribution (EBD)
- Passenger side airbag can be deactivated
- Airbag, side airbags for driver and front passenger and head/shoulder airbags (iC) for all occupants
- Exhaust system with two chrome-plated tailpipes
- Electrically adjustable and heated exterior mirrors on the left and right sides, driver and passenger side with wide-angle optics
- Fog sensor for automatic activation of the defroster function
- On-board computer with vehicle control functions
- Chrome trim on the side windows
- CleanZone air quality system with activated carbon filter - automatic recirculation and pre-ventilation of the interior when the vehicle is unlocked.
- Connected Safety: Cloud-based warning of slippery road conditions and vehicles with hazard warning lights activated.
- Diesel particulate filter
- Drive Mode settings for engine, transmission, steering, brakes and suspension: Comfort, Eco, Dynamic, Off Road, Individual
- Aluminum inlay Iron Ore
- Aluminum door sill plates with Volvo lettering at the front
- ESC - Vehicle Dynamics Control
- Front grille in waterfall design in high-gloss black
- Luggage compartment partition net
- Transmission: 8-speed Geartronic automatic transmission
- Heated rear window
- Interior and exterior mirrors automatically dimming
- Interior lighting: headliner, front reading lights, front ambient lighting, front footwell, storage compartment behind center console, glove compartment and luggage compartment
- Keyless start electronic engine start system
- Child safety lock (rear doors)
- Headrests (5) front and rear
- Rear headrests foldable electrically
- Paint finish: Solid
- Charging box under the cargo floor
- Stainless steel loading sill protector in the luggage compartment
- Lane Keeping Aid (LKA) Active lane keeping assistant
- LED headlights "Thor's Hammer" with high beam assist and integrated LED daytime running lights
- Leather gearshift lever
- Steering wheel: Leather steering wheel, 3-spoke design (anthracite) - Multifunction buttons on the steering wheel in black
- Sensus navigation system - 3D navigation - Destination input via natural voice control - Dynamic route guidance with real-time traffic information - Local search (search for surroundings using keywords with information, reviews and photos) - Volvo Lifetime MapCare
- Electric parking brake
- Upholstery: Textile
- Radio accessories: Digital radio reception (DAB+)
- Driver and passenger side airbags with two-stage deployment system
- Airbag, driver's knee airbag
- All-wheel drive (AWD) via electronically controlled multi-plate clutch (5th generation) with Instant Traction
- Electrically folding exterior mirrors
- Outdoor temperature display
- Hill Descent Control (HDC)
- Hill Start Assist (HSA)
- LED turn signals integrated into the exterior mirrors
- third brake light
- City Safety automatic emergency braking system with detection of vehicles, cyclists, pedestrians and large animals, including intersection braking assistant, emergency braking assistant for oncoming traffic and steering support during evasive maneuvers.
- Roof edge spoiler
- Aluminum roof rails (integrated)
- Digital instrumentation: 12.3" full-graphic display (31.2 cm diagonal) with two variable round instruments and information display (e.g. for navigation map view)
- Driver Alert - Attention Warning
- Rear parking assist
- Electronic differential lock Corner Traction Control (CTC)
- Electric windows front and rear with auto-down and auto-up function
- Cruise control and variable speed limiter
- Electric automatic tailgate
- IDIS - Intelligent Driver Information System - delays incoming calls or vehicle information in impending dangerous situations.
- ISOFIX mounting for the outer rear seats
- Keyless Drive (electronic access system) with sensor-controlled tailgate, waterproof micro key and illuminated door handles and puddle lights
- Automatic climate control with separate temperature control for driver and front passenger and additional air vents for the 2nd row of seats (integrated in the B-pillar) including pre-ventilation and post-heating of the interior when the engine is switched off via Volvo On Call smartphone app or menu.
- Cargo area roller blind
- LED fog lights integrated into the front spoiler - Only when selecting the "Full LED headlights - Thor's Hammer" option including cornering lights
- Steering wheel adjustable for height and reach
- Illuminated makeup mirror for driver and front passenger
- Rear center armrest (foldable) with cup holders
- Front center armrest with integrated storage compartment and cup holders
- Emergency brake lights: rapid illumination of the brake lights during heavy deceleration; automatic activation of the hazard warning lights at speeds below 10 km/h.



- Radio accessories: Two USB-C ports on the back of the center console
- Rain sensor
- Road Edge Detection System to protect against unintentional roadway exits through steering and braking interventions
- Wheels: 18" alloy wheels, 5-Y-spoke design; tires 235/60 R18 with rims 7.5 Jx 18"
- Wheels: Tire sealant included, 12-volt compressor included, maximum speed 80 km/h
- Rear seats in a 40/60 split or completely foldable with pass-through function
- Seat belts - Active seat belts with pretensioners; pre-activation of the pretensioners only in conjunction with IntelliSafe Surround - Front seat belt height adjustment - Warning tone/indicator when seat belts are not fastened (for all seats)
- Start/Stop technology
- 12-volt power outlet in the luggage compartment
- First aid kit and warning triangle
- Lashing eyes in the luggage compartment (foldable)
- Preparation for Trailer Stability Assist (TSA)
- Immobiliser
- WHIPS whiplash protection system including immersion protection on all seats and energy-absorbing front seat cushions
- Central locking with two remote controls and integrated emergency keys - automatic locking of doors while driving (can be deactivated) - comfort opening/closing of side windows and, if applicable, sunroof via remote control - panic function integrated into the remote control
- Oncoming Lane Mitigation - Preventive protection system when crossing the center line and approaching oncoming traffic, including steering intervention towards the own lane.
- Radio accessories: Smartphone integration Apple CarPlay and Android Auto. Integration of Apple iPhones and Android smartphones into the Sensus operating system.
- Tire pressure monitoring system with tire-specific pressure loss warning
- Road Sign Information (RSI) - Traffic Sign Recognition
- Run-off Road Protection: Preventive protection system in case of unintentional road departure or impending rollover, including pre-activation of the seatbelt pretensioners, battery deactivation (plug-in hybrid only), emergency call via Volvo On Call and door unlocking.
- Speed-sensitive power steering
- Safety braking system with disc brakes all around (internally ventilated), automatic brake system pre-tensioning, brake assist and automatic hold function
- Seats: Driver and front passenger seats height-adjustable (electrically) including manual tilt adjustment
- Seats: Lumbar support (2-way adjustable) for driver and front passenger seats
- 12-volt socket at the front
- Glazing: Colored glazing
- Volvo On Call with Wi-Fi hotspot including integrated modem, external antenna, and Wi-Fi hotspot for mobile devices. Volvo On Call features: automatic emergency call function with transmission of vehicle position and data, and alerting the Volvo On Call service center at the touch of a button (10-year subscription). Additionally, various convenience services are available via the smartphone app (3-year subscription, extendable upon request; includes extension of the emergency call function).



Extra equipment

- Towbar (semi-electric)
- Head-up display: Graphic projection of driving information onto the windshield
- Package: IntelliSafe Package Pro - Pilot Assist: Adaptive cruise control with distance warning and lane keeping assist up to speeds of 130 km/h - IntelliSafe Surround: Blind Spot Information System (BLIS) including lane departure warning for rapidly approaching vehicles and steering intervention - Cross Traffic Alert with braking intervention - Rear impact mitigation warning for vehicles, cyclists and pedestrians when reversing out of parking spaces
- Package: Winter Package - Heated front seats - Heated wiper blades and windshield washer nozzles - Heated steering wheel
- Package: Xenium Package - Front and rear parking sensors - Rearview camera - Sensus Connect infotainment system with HIGH PERFORMANCE SOUND PRO by Harman Kardon, 9" touchscreen, 600 watts, 14 speakers, Fresh Air Subwoofer, Dirac Unison sound optimization, 2 USB ports (compatible with iPod, iPhone, iPad), Bluetooth hands-free system incl. audio streaming, Internet access incl. internet radio and apps (via paired smartphone), voice control, digital vehicle owner's manual, Connected Service Booking
- Phone: Inductive smartphone charging system. Wirelessly charges smartphones that support the Qi standard on a charging pad.
- Parking assistance, front and rear
- IntelliSafe Surround - Blind Spot Information System (BLIS) Blind Spot Assist including Lane Departure Warning for rapidly approaching vehicles, including steering intervention if warning signals are ignored - Cross Traffic Alert (CTA) Cross Traffic Warning with braking intervention - Warning of vehicles, cyclists, and pedestrians approaching from the side when reversing out of parking spaces, including braking to a standstill if warning signals are ignored - Rear Impact Mitigation - Preventive protection against impending rear-end collisions
- Package: Lighting Package - Headlight cleaning system - Full LED headlights "Thor's Hammer" Active High Beam with extended high beam, dynamic cornering lights, intelligent high beam assist with adaptive headlight range control and integrated LED daytime running lights - Ambient lighting Extended ambient lighting (multicolor) front/ rear tailgate Exit lights front/rear Illuminated door pockets - openers front/rear Illuminated cup holders front Footwell lighting rear Reading lights rear
- Pilot Assist - Adaptive cruise control with distance warning and lane keeping assist up to speeds of 130 km/h - Curve Speed Assist (CSA) - Adjustment of vehicle speed before curves based on map data
- Rear view camera
- Glazing: Side and rear windows tinted (from the B-pillar back)

Brief expert findings

Documents submitted	At the time of the inspection, the vehicle registration certificate Part 2 (title) was available, but the vehicle registration certificate Part 1 (document) was not. (Copy)
VIN comparison	The vehicle identification number (VIN) was read from the vehicle and its conformity with the submitted documents was confirmed by the undersigned during the inspection.
Inspection	A proper visual inspection of the paintwork and bodywork was only possible to a limited extent due to insufficient lighting conditions/dampness or dirt. No lifting equipment or pit was available for inspecting the vehicle. Therefore, inspection of the vehicle's underside was only possible to a limited extent.
Test drive	No test drive/shunting maneuver was carried out during the inspection of the vehicle.
Engine function test	An engine test run could not be performed. This is due to the following reason.: Motor zerlegt
readiness to drive	The vehicle was not roadworthy at the time of inspection, but only capable of being towed.

Value reducing factors

No.	Component group	Description
1	Door - front right side	Brightware - lower - Scratch(es) - Smart repair
2	Misc.	Main inspection - Due - Perform
3	Rear bumper	Rear bumper - Scratched - Paint
4	Front bumper	Front bumper - Scratched - Paint
5	Engine	Engine - Non-operational - Replace



Missing parts

Description

2nd wheel set - 2nd wheel set (Original 18 Zoll)
Documents - Log book
Equipment - Vehicle key

Previous damages

No.	Previous damage	Extent of damage (Net)
1	Side - left, Provided by user / customer, from 1 Jul 2025	3.555,60 €

Order/Scope of Order

An order was placed to prepare a sales report for the described vehicle. This report includes the following:

- Description of key vehicle information
- Documentation of equipment features
(*Delivery by third-party service providers*)
- Documentation of damage, defects, missing parts
- Documentation of prior damage, unrepaired prior damage, repainting
- A brief visual or functional inspection of the equipment details, if possible.
(*Functional testing of driver assistance systems is not included in the scope of services!*)
- a photographic documentation of the vehicle

Basis for the order

This product is based on the guidelines for vehicle returns and valuations published by Alphabet Fleet GmbH. The expert makes the specific findings in each individual case objectively, within the framework of the prescribed standards, based on their own expertise.

The vehicle inspection takes place in a fully assembled, unassembled state.

Damage or defects that can only be detected during disassembly/diagnostic work or through further investigation remain within the realm of prognostic risk. An increased risk exists due to concealed defects caused by fraudulent misrepresentation and which were not identifiable by the expert.

Damage or defects resulting from normal use or wear and tear of the vehicle will be accepted in accordance with the applicable standard.

There was no explicit identification or monetary consideration of the expected features within the product.

Features which, in their nature and extent, slightly exceed normal use but do not constitute unacceptable damage, will be documented and indicated as signs of wear, if applicable.

Damage or defects that, according to the applicable standard, can no longer be attributed to normal use or wear and tear are listed under "Value Reducing Factors" in the product description.

Depending on the product specification, a monetary ID can be provided. If this takes place, the costs can be 100% d or pro rata depending on the vehicle's age and mileage.

Previous damages

According to available information previous damages were repaired at the vehicle. Traces of repairs, which allow conclusions about the area of repair, were not recognizable during the inspection.



Comments

- Fhgz. und Motor zum Teil zerlegt.
- Die beigefügte Reparaturkostenkalkulation wurde nach bestem Wissen und Gewissen unter eingeschränkter Besichtigungsbedingung im demontagefreien Zustand erstellt. Es können aufgrund verdeckter Beschädigung erhebliche Mehrkosten und somit Abweichungen der für den Defekt ausgewiesenen Reparaturkosten nicht ausgeschlossen werden.
- Für den montierten Radsatz wurde kein Nachweis erbracht.
- Winterradsatz ist kein Bestandteil des Auslieferungsumfanges.



Figure 1: Diagonal front (left)

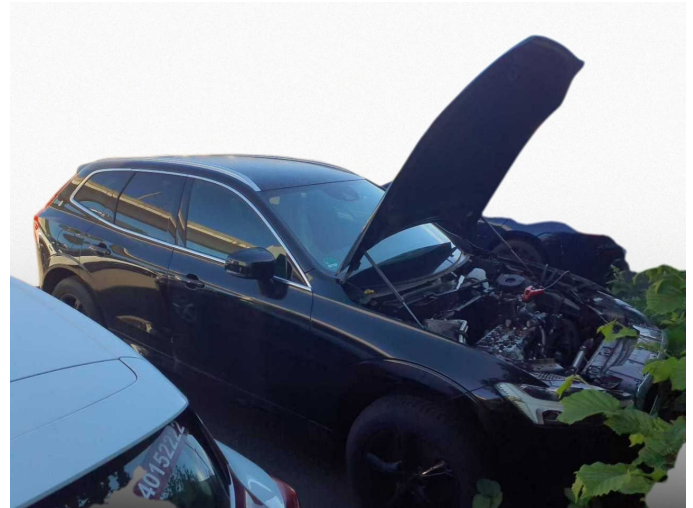


Figure 2: Diagonal front (right)



Figure 3: Diagonal rear (left)



Figure 4: Diagonal rear (right)



Figure 5: Interior - front



Figure 6: Interior - rear



Figure 7: Instrument cluster



Figure 8: Instrument panel



Figure 9: Interior 360° view



Figure 10: Cargo area



Figure 11: VIN



Figure 12: Mounted tyres

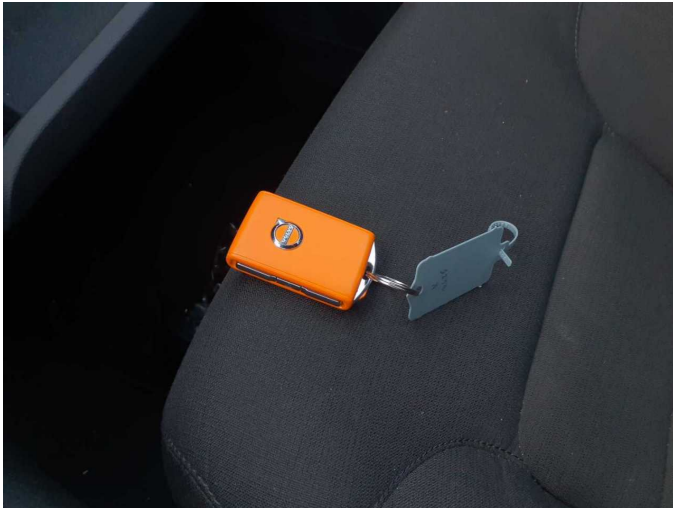


Figure 13: Documents

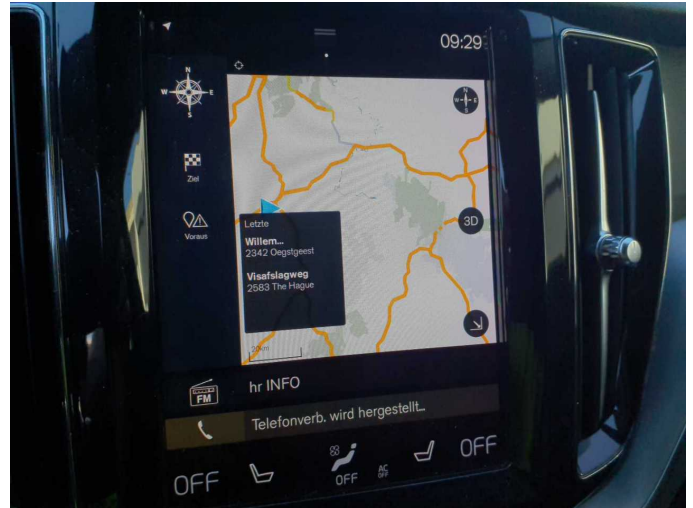


Figure 14: Navigation



Figure 15: Misc.



Figure 16: Misc.



Figure 17: Misc.



Figure 18: Misc.



Figure 19: Misc.



Figure 20: Misc.



Figure 21: Misc.

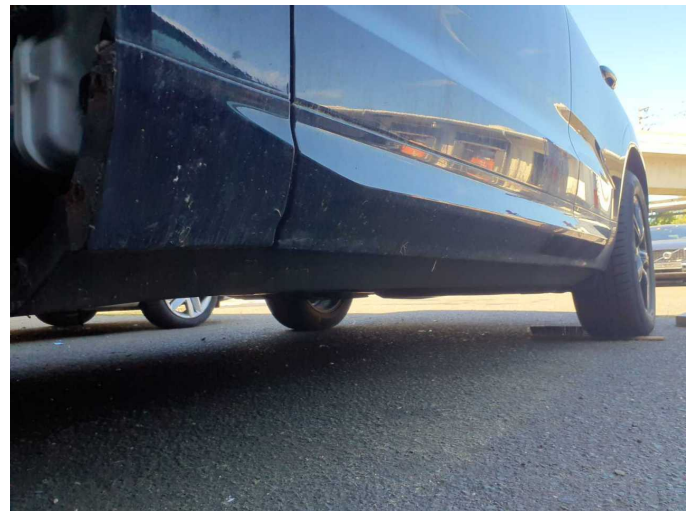


Figure 22: Misc.

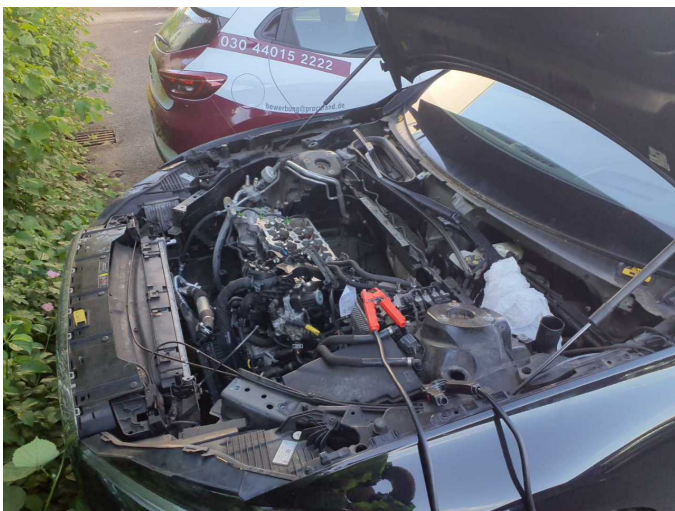


Figure 23: Misc.



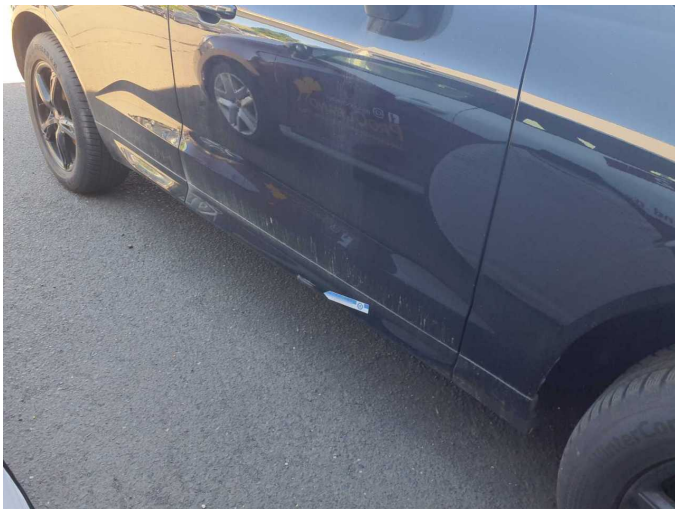
Figure 24: Misc.



Figure 25: Misc.



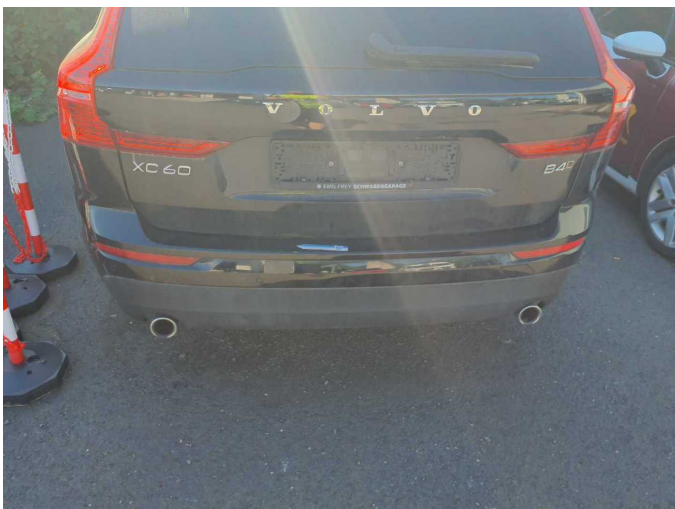
Figure 26: Misc.



Damage 1: Door - front right side: Brightware - lower - Scratch(es) - Smart repair



Damage 1: Door - front right side: Brightware - lower - Scratch(es) - Smart repair



Damage 3: Rear bumper: Rear bumper - Scratched - Paint



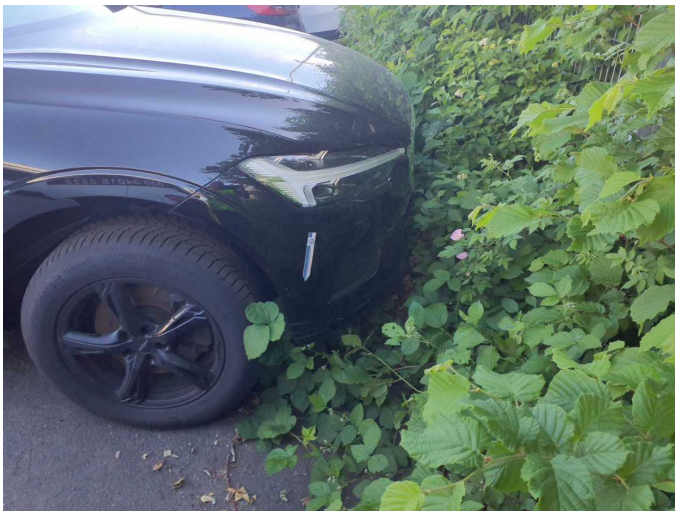
Damage 3: Rear bumper: Rear bumper - Scratched - Paint



Damage 3: Rear bumper: Rear bumper - Scratched - Paint



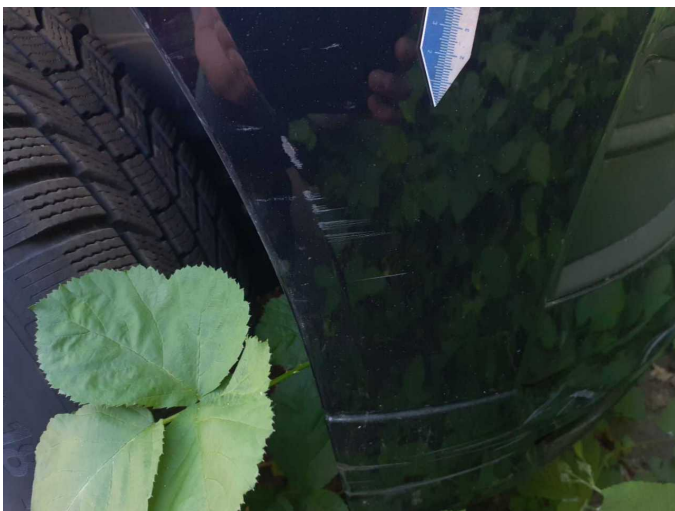
Damage 3: Rear bumper: Rear bumper - Scratched - Paint



Damage 4: Front bumper: Front bumper - Scratched - Paint



Damage 4: Front bumper: Front bumper - Scratched - Paint



Damage 4: Front bumper: Front bumper - Scratched - Paint



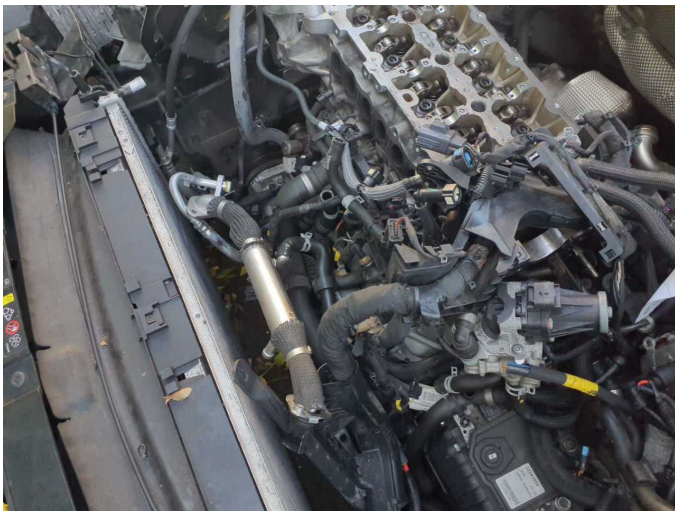
Damage 4: Front bumper: Front bumper - Scratched - Paint



Damage 5: Engine: Engine - Non-operational - Replace



Damage 5: Engine: Engine - Non-operational - Replace



Damage 5: Engine: Engine - Non-operational - Replace



Damage 5: Engine: Engine - Non-operational - Replace



Damage 5: Engine: Engine - Non-operational - Replace



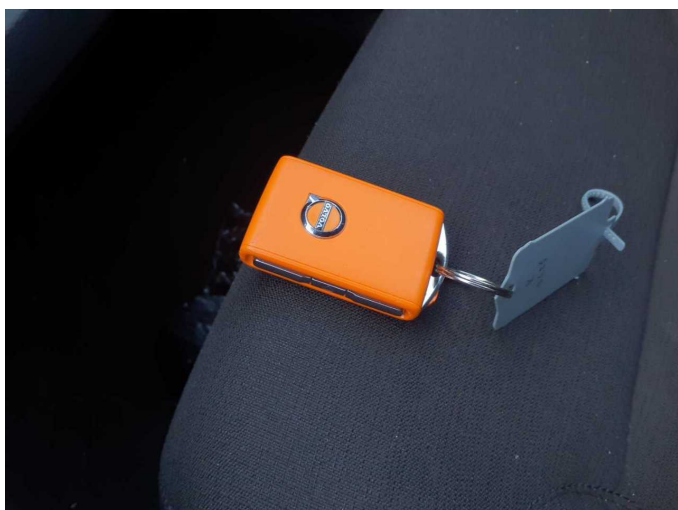
Damage 5: Engine: Engine - Non-operational - Replace



Damage 5: Engine: Engine - Non-operational - Replace



Damage 5: Engine: Engine - Non-operational - Replace



Missing part 3: Equipment: Vehicle key - Missing - Replace



Wartungshistorie

(gemäß Auftraggeber Informationen)

Fahrgestellnummer: YV1UZK5VCM1819536

Hersteller / Modell: VOLVO VOLVO XC60 B4 D AWD Geartronic Momentum Pro

Datum	KM-Stand	Beschreibung
07.03.2026	174.364	Systemtest/Eigendiagnose
29.08.2025	162.058	Keilrippenriemen; Reparatur Sonstiges; Systemtest/Eigendiagnose; Wasserpumpe ern
22.08.2025	161.614	Bremsflüssigkeit; Bremsflüssigkeit ern; Motoröl b. Wartung; Ölfilter ern; Regelwartungsdienst; Wartung Sonstiges
06.09.2024	132.641	Keilriemen ern; Kraftstofffilter ern; Luftfiltereinsatz ern; Motoröl b. Wartung; Ölfilter ern; Regelwartungsdienst; Wartung Sonstiges
29.05.2024	125.586	Bremsklötze hinten; Bremsklötze vorne; Bremsscheiben + Klötze h; Bremsscheiben + Klötze v; Bremsscheiben hinten; Bremsscheiben vorne
07.09.2023	108.712	Bremsflüssigkeit; Bremsflüssigkeit ern; Motoröl b. Wartung; Ölfilter ern; Regelwartungsdienst; Wartung Sonstiges
16.11.2022	68.575	Kraftstofffilter ern; Luftfiltereinsatz ern; Motoröl b. Wartung; Ölfilter ern; Regelwartungsdienst; Wartung Sonstiges
10.02.2022	31.685	Kleine Inspektion; Motoröl b. Wartung; Ölfilter ern; Wartung Sonstiges