

Expertise

Protocol number: 46322995
Order No. / Reference: 26637744
Inspection date: 6 Jul 2026

Manufacturer: Volkswagen

Model: Golf Variant 2.0 TDI 4Motion SCR DSG Alltrack

VIN: WVVZZZCD6PW544185



Vehicle details

Manufacturer / Type / Model / Equipment

Volkswagen Golf Variant 2.0 TDI 4Motion SCR DSG Alltrack

Vehicle Identification number WVVZZZCD6PW544185

Mileage (Read) 109,187 km

First registration 12 Jun 2023

Number of holders 1

Next periodical technical inspection 06/2026

(Report not on hand)

Power / Engine displacement 147 kw / 1,968 ccm

Fuel type / Cylinder Diesel / 4

Gearbox / Number of gears Automatic / 7

Type of drive All-wheel drive

Type of vehicle Station wagon

Colour / colour code Atlantic Blue Metallic (C5B)

Doors / Seats 5 / 5

Upholstery type Cloth

Colour of upholstery Black-Grey

Vehicle with smoke odor no



Vehicle details

Maintenance booklet / proof	digital proof / complete	Next maintenance in	11,300 km
Last service on / at	02/2026 at 98,145 km		
Key is / should be	2 / 2	FZG documents	ZB#2 (B) was available (copy), ZB#1 (S) was not available.
		Letter No.	GV178902
Previous damage / Accident	Detectable	Repainting	Detectable
Inspection conditions	sufficient	Lifting equipment / pit	yes
Test drive	Not performed	Engine function test	Performed
Manufacturer key number/ type code number	0603 / COL 00621		
Emission standard	EURO6;WLTP;AP;PI/CI; M, N1 I	fine dust sticker	
Permitted total weight	2,110 kg	Empty weight	

Tyres

Mounted tyres

#	Tyre size	Type of tyre	Manufacturer	Tread depth
1)	225/45 R18 95Y	Summer tyres on Light alloy	Continental	7mm / 7mm
2)	225/45 R18 95Y	Summer tyres on Light alloy	Continental	7mm / 7mm

Additional tyres

#	Tyre size	Type of tyre	Manufacturer	Tread depth
1)	225/45 R18 95V	Winter tyres on Light alloy	Goodyear	5mm / 5mm
2)	225/45 R18 95V	Winter tyres on Light alloy	Goodyear	7mm / 7mm

Replacement

Typ	Tyre size	Type of tyre	Manufacturer	Tread depth
Tirefit		Expiration date 03/2027		

Legend: Tread depth information for the left tire is listed first, for the right tire it is listed second on the axle in the direction of travel.



Equipment

Standard equipment

- Airbag for driver and front passenger
- Permanent all-wheel drive
- 30-color ambient lighting
- Electrically adjustable and heated exterior mirrors with memory function and passenger-side mirror lowering function.
- Chrome strip at the bottom of the side windows
- Decorative inlays "Nature Cross Brushed"
- Digital Cockpit Pro, multicolor
- Electronic differential lock XDS
- Electronic stability program and electromechanical brake booster
- Driving profile selection
- Windscreen made of laminated safety glass, heat and sound insulating
- Speed limiter
- Rear window heated
- ISOFIX mounting points
- Rear headrests (3)
- Paint finish: Solid
- LED Plus headlights
- Illuminated strip between headlights and door handle recesses
- Fatigue detection
- Non-smoking version
- Emergency call service
- Package: Seat Comfort Package
- Radio: Radio "Ready 2 Discover" incl. "Streaming & Internet"
- Wheels: Tire Mobility Set
- Keyless start system without safe locking
- electromechanical power steering
- Seat belts: Three-point automatic seat belts for the outer rear seats
- Seat covers in "Alltrack" fabric
- Seats: Comfort seats in the front
- Start-stop system
- Telephone interface with inductive charging function
- Engine underguard
- Prepared for later activation: Navigation function "Discover Media" incl. "Streaming & Inter"
- Central locking without safe locking, with remote control and 2 remote folding keys
- Airbags: Front and rear head airbags, front side airbags, center airbag
- App-Connect Wireless for Apple CarPlay and Android Auto
- Exterior mirror housings and door handles in body color
- third brake light
- Car2X
- Roof rails, silver anodized
- Diesel particulate filter and SCR catalyst
- Parking assistance
- Electronic parking brake including auto-hold function
- Automatic headlight control, with LED daytime running lights
- Electric windows, front and rear
- Pedestrian protection measures expanded
- luggage compartment cover
- Transmission: 7-speed DSG
- Rear window wiper with intermittent function
- "Climatronic" air conditioning system
- Front headrests
- LED reading lights at the front (2) and 2 at the rear
- LED taillights
- Steering wheel: Multifunction leather steering wheel with paddle shifters
- Fog lights with cornering lights
- Emergency braking assistant "Front Assist" with pedestrian and cyclist detection
- Brushed stainless steel pedals
- Tire pressure monitoring system (passive)
- Wheels: Alloy wheels (4) "Ronda" 7 J x 17
- Rear bench seat undivided, backrest asymmetrically split and foldable with center armrest
- Seat belts: Three-point automatic seat belt for the middle rear seat
- Seat belts: Three-point automatic seat belts at the front with height adjustment and belt tensioner
- Lane keeping assistant "Lane Assist"
- 12-volt power outlet in the luggage compartment
- Textile floor mats front and rear
- Ambient lighting with logo projection
- Electronic immobilizer
- Green thermal insulation glazing, sides and rear



Extra equipment

- Lane change assistant "Side Assist", parking assistant and exit warning (alerts the driver with visual signals in the respective exterior mirror to vehicles that could pose a danger when changing lanes - Parking assistant: monitors the area behind and beside the vehicle when reversing out of a parking space, issues visual and acoustic warning signals if a vehicle is detected crossing the parking space path, can initiate emergency braking to reduce the severity of a collision or to prevent a collision altogether)
- Package: Business Premium incl. navigation system (DSG) (6+1 speakers, App-Connect incl. App-Connect Wireless for Apple CarPlay, Android Auto, automatic distance control, adaptive cruise control (ACC) stop/go, speed limiter, emergency brake, pedestrian detection, travel assist, lane assist, emergency assist, leather multifunction steering wheel, heated, with shift paddles, multifunction camera, Discover Media navigation incl. streaming & internet (MP3, touchscreen, USB), cargo net partition, radio, heated windshield washer system, voice control, telephone interface, Comfort with inductive charging, textile floor mats, traffic sign recognition, heated front seats)
- Package: Top Package (Alltrack) (2 LED reading lights front, 2 rear, Dynamic High Beam Control, Dynamic Light Assist, Automatically dimming interior mirror, IQ.LIGHT - LED matrix headlights with LED daytime running lights, cornering lights and dynamic turn signals, Air Care Climatronic air conditioning with 3-zone temperature control, allergen filter and rear controls, LED taillights with dynamic turn signals, Dynamic headlight range control with dynamic cornering lights, Multifunction camera, Panoramic tilt/slide sunroof, Rain sensor)
- Rear side windows and rear window tinted
- Rear View reversing camera
- Easy Open & Close - tailgate with sensor-controlled opening and closing, with remote unlocking
- Head-up display
- Navigation system "Discover Pro" incl. "Streaming & Internet" (6+1 speakers - App-Connect incl. App-Connect Wireless for Apple CarPlay and Android Auto - Navigation system "Discover Pro" incl. "Streaming & Internet" - Radio - Voice control - Traffic sign recognition)
- Package: Comfort package including front center airbag (electrically adjustable, folding, and heated exterior mirrors with memory function and passenger-side mirror lowering function - anti-theft alarm system with interior monitoring, backup horn and tow-away protection - front and rear head and side airbags, center airbag - "Park Assist" parking assistant including parking aid - proactive occupant protection system in conjunction with "Front Assist" and "Side Assist" - keyless locking and starting system "Keyless Access", with safe locking function)
- Package: Winter "Premium" (DSG) (Air Care Climatronic air conditioning with active combination filter, rear controls and 3-zone temperature control - leather multifunction steering wheel, heated, with shift paddles - automatically heated front windscreen washer nozzles - auxiliary heating and ventilation with remote control and timer - heated front seats and outer rear seats)
- Paint finish: Metallic
- Park Assist system including parking aid
- Power outlet in the luggage compartment, 230 V
- Towbar, foldable with electric release
- Wheels: Alloy wheels (4) "Mount Vernon" 7.5 J x 18, polished surface (tires 225/45 R 18 - wheel locks with enhanced theft protection)

Brief expert findings

Documents submitted	At the time of the inspection, the vehicle registration certificate Part 2 (title) was available, but the vehicle registration certificate Part 1 (document) was not. (Copy)
VIN comparison	The vehicle identification number (VIN) was read from the vehicle and its conformity with the submitted documents was confirmed by the undersigned during the inspection.
Inspection	The inspection conditions were sufficient for the assessment of the vehicle. Lifting equipment and/or a pit were available for examining the vehicle.
Test drive	No test drive/shunting maneuver was carried out during the inspection of the vehicle.
Engine function test	An engine test run was performed.



Value reducing factors

No.	Component group	Description
1	Roof	Roof - dent(s) - Smooth repair work
2	Side panel - rear left side	Sill - Scratch(es) - Smart repair
3	Trim / covers	Door trim - rear left side - dent(s) - Loss in value
4	Wheel / tyres	Alloy rim - front right side - Scratch(es) - Loss in value
5	Door - front right side	Brightware - lower - Deformed - Replace
6	Side panel - rear right side	Side panel - Scratch(es) - Smart repair
7	Side panel - rear left side	Side panel - Dent / paintcoat damage - Smart repair
8	Wheel / tyres	Alloy rim - rear left side - Scratch(es) - Loss in value
9	Wheel / tyres	Alloy rim - front left side - Scratch(es) - Replace
10	Door - rear right side	Door - Scratch(es) - Paint
11	Bonnet	Bonnet - Stone chips - Paint

Wear and tear

No.	Component group	Description
1	Trim / covers	Door trim - rear right side - Scratch(es) - No deduction
2	Door - rear left side	Door - Scratch(es) - No deduction

The vehicle shows signs of wear and tear commensurate with its age and use.

Previous damages

No.	Previous damage	Extent of damage (Net)
1	Side right, Provided by user / customer, from 19 Apr 2026	1.005,04 €
2	Rear, Provided by user / customer, from 19 Apr 2026	2.019,59 €

Repainting

No.	Repainting
1	Roof rail - right side, Professionally carried out, Invoice of repair done Non-existent
2	Side panel - rear right side, Professionally carried out, Invoice of repair done Non-existent

Paint coat thickness measurement

Roof rail - right side	297 µm	Side panel - rear right side	262 µm
------------------------	--------	------------------------------	--------

Order/Scope of Order

An order was placed to prepare a sales report for the described vehicle. This report includes the following:

- Description of key vehicle information
- Documentation of equipment features
(*Delivery by third-party service providers*)
- Documentation of damage, defects, missing parts
- Documentation of prior damage, unrepaired prior damage, repainting
- A brief visual or functional inspection of the equipment details, if possible.
(*Functional testing of driver assistance systems is not included in the scope of services!*)
- a photographic documentation of the vehicle



Basis for the order

This product is based on the guidelines for vehicle returns and valuations published by Alphabet Fleet GmbH. The expert makes the specific findings in each individual case objectively, within the framework of the prescribed standards, based on their own expertise.

The vehicle inspection takes place in a fully assembled, unassembled state.

Damage or defects that can only be detected during disassembly/diagnostic work or through further investigation remain within the realm of prognostic risk. An increased risk exists due to concealed defects caused by fraudulent misrepresentation and which were not identifiable by the expert.

Damage or defects resulting from normal use or wear and tear of the vehicle will be accepted in accordance with the applicable standard.

There was no explicit identification or monetary consideration of the expected features within the product.

Features which, in their nature and extent, slightly exceed normal use but do not constitute unacceptable damage, will be documented and indicated as signs of wear, if applicable.

Damage or defects that, according to the applicable standard, can no longer be attributed to normal use or wear and tear are listed under "Value Reducing Factors" in the product description.

Depending on the product specification, a monetary ID can be provided. If this takes place, the costs can be 100% d or pro rata depending on the vehicle's age and mileage.

Previous damages

According to available information previous damages were repaired at the vehicle. Traces of repairs, which allow conclusions about the area of repair, were not recognizable during the inspection.

Comments

Der beiliegende Winterradsatz ist kein Bestandteil der Auslieferungsumfangs.



Figure 1: Diagonal front (left)



Figure 2: Diagonal front (right)



Figure 3: Diagonal rear (left)



Figure 4: Diagonal rear (right)



Figure 5: Interior - front



Figure 6: Interior - rear



Figure 7: Instrument cluster



Figure 8: Instrument panel



Figure 9: Interior 360° view



Figure 10: Cargo area

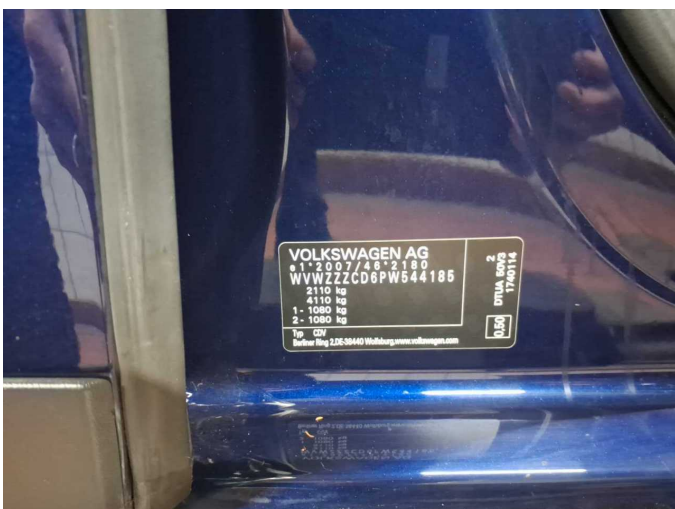


Figure 11: VIN



Figure 12: Mounted tyres

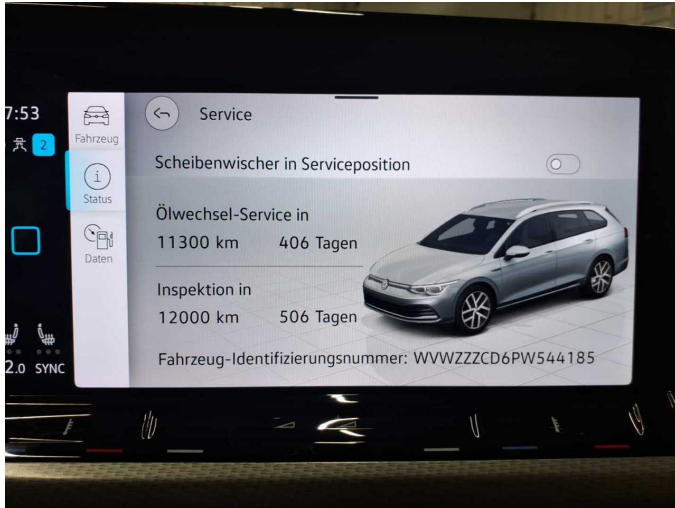


Figure 13: Documents



Figure 14: Documents



Figure 15: Additional tyres

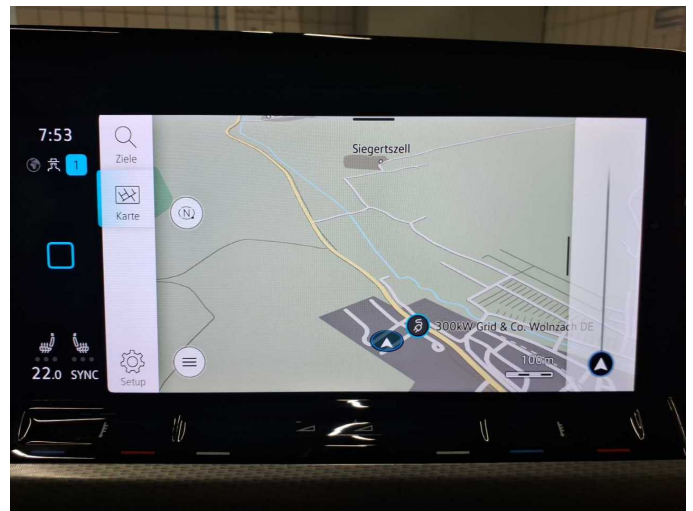


Figure 16: Navigation



Figure 17: Misc.

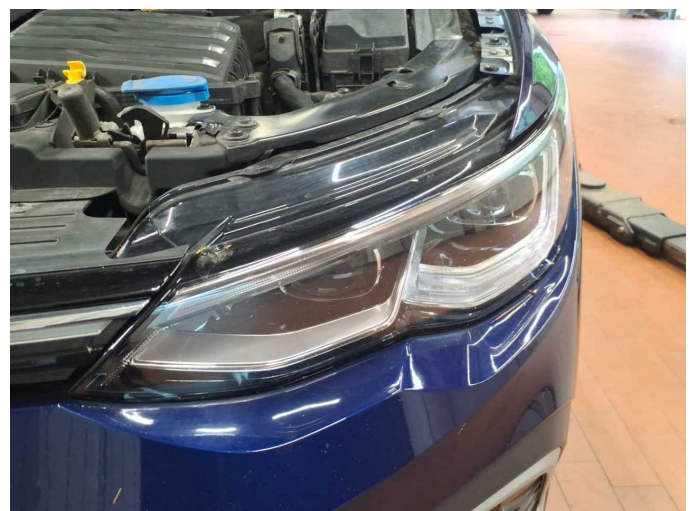


Figure 18: Misc.



Figure 19: Misc.



Figure 20: Misc.



Figure 21: Misc.



Figure 22: Misc.



Figure 23: Misc.



Figure 24: Misc.



Figure 25: Misc.



Figure 26: Misc.



Figure 27: Misc.



Figure 28: Misc.

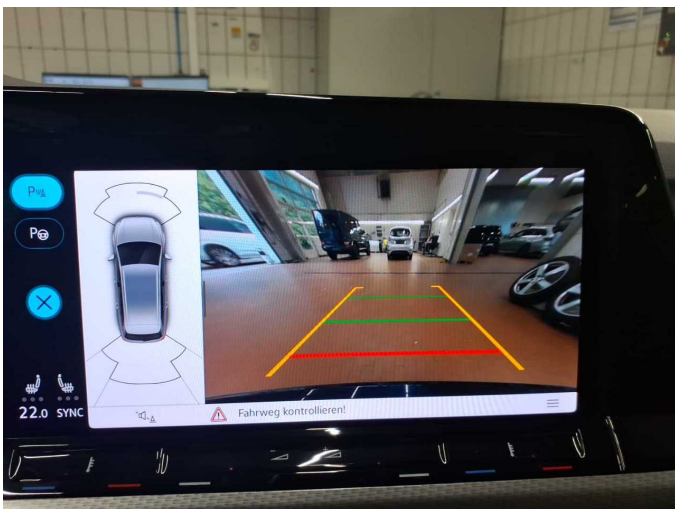


Figure 29: Misc.



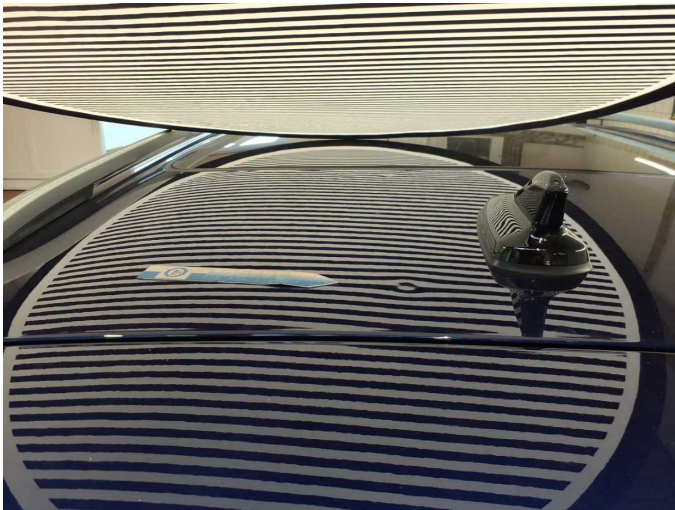
Figure 30: Misc.



Figure 31: Misc.



Figure 32: Misc.



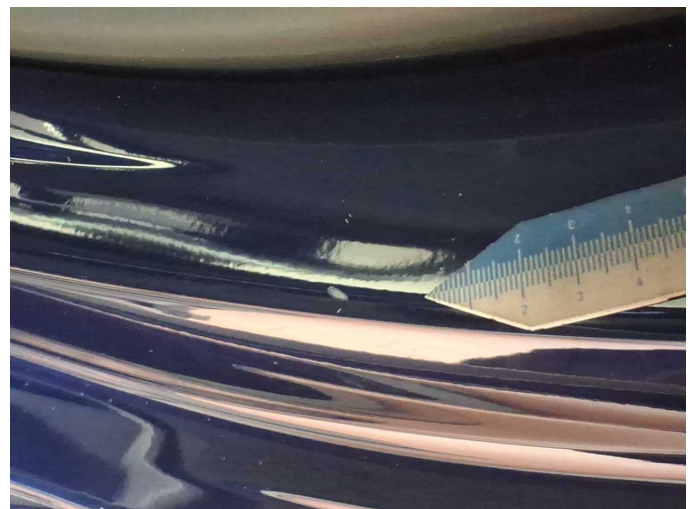
Damage 1: Roof: Roof - dent(s) - Smooth repair work



Damage 1: Roof: Roof - dent(s) - Smooth repair work



Damage 2: Side panel - rear left side: Sill - Scratch(es) - Smart repair



Damage 2: Side panel - rear left side: Sill - Scratch(es) - Smart repair



Damage 3: Trim / covers: Door trim - rear left side - dent(s) - Loss in value



Damage 3: Trim / covers: Door trim - rear left side - dent(s) - Loss in value



Damage 4: Wheel / tyres: Alloy rim - front right side - Scratch(es) - Loss in value



Damage 4: Wheel / tyres: Alloy rim - front right side - Scratch(es) - Loss in value



Damage 5: Door - front right side: Brightware - lower - Deformed - Replace



Damage 5: Door - front right side: Brightware - lower - Deformed - Replace



Damage 6: Side panel - rear right side: Side panel - Scratch(es) - Smart repair



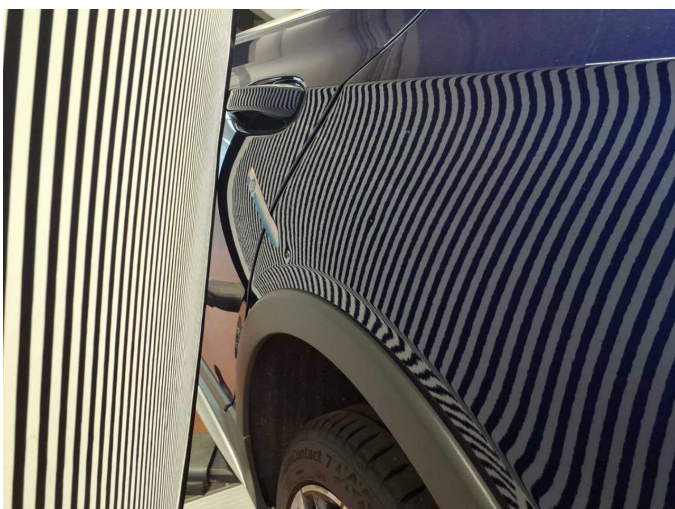
Damage 6: Side panel - rear right side: Side panel - Scratch(es) - Smart repair



Damage 7: Side panel - rear left side: Side panel - Dent / paintcoat damage - Smart repair



Damage 7: Side panel - rear left side: Side panel - Dent / paintcoat damage - Smart repair



Damage 7: Side panel - rear left side: Side panel - Dent / paintcoat damage - Smart repair



Damage 8: Wheel / tyres: Alloy rim - rear left side - Scratch(es) - Loss in value



Damage 8: Wheel / tyres: Alloy rim - rear left side - Scratch(es) - Loss in value



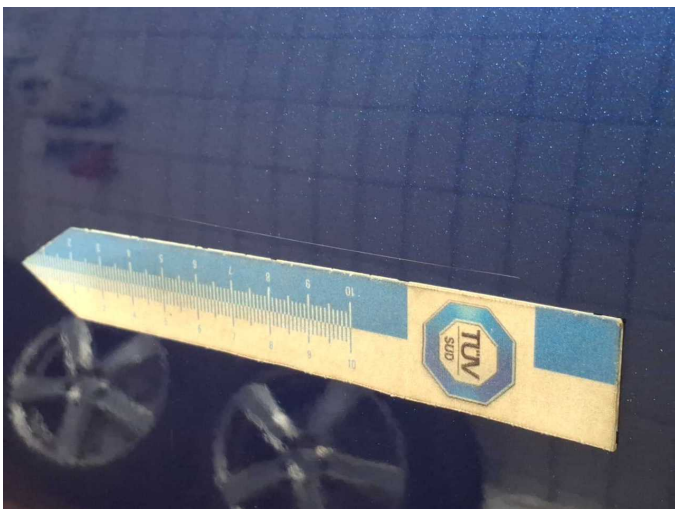
Damage 9: Wheel / tyres: Alloy rim - front left side - Scratch(es) - Replace



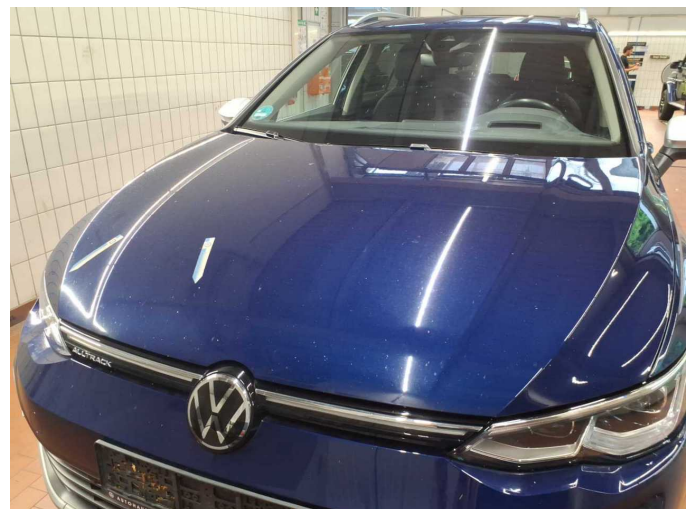
Damage 9: Wheel / tyres: Alloy rim - front left side - Scratch(es) - Replace



Damage 10: Door - rear right side: Door - Scratch(es) - Paint



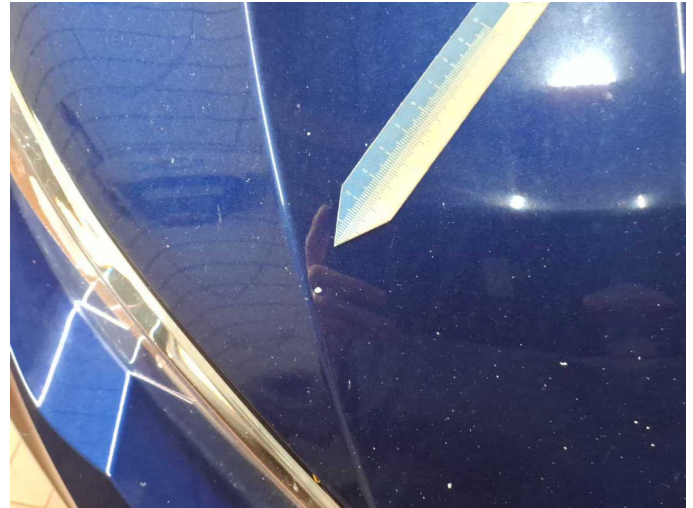
Damage 10: Door - rear right side: Door - Scratch(es) - Paint



Damage 11: Bonnet: Bonnet - Stone chips - Paint



Damage 11: Bonnet: Bonnet - Stone chips - Paint



Damage 11: Bonnet: Bonnet - Stone chips - Paint



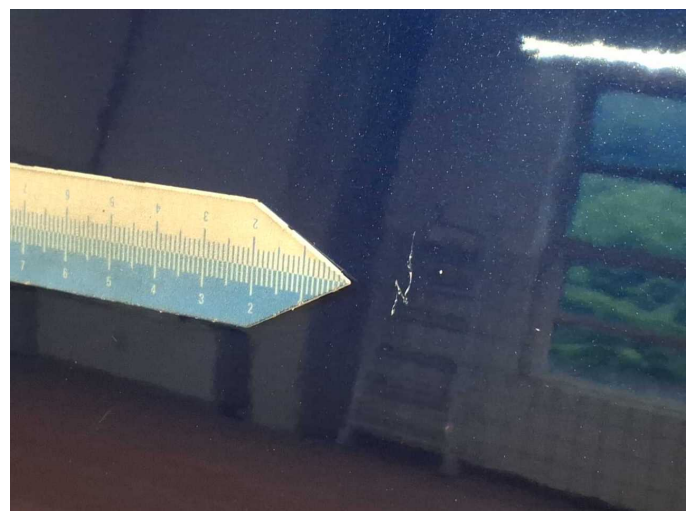
Wear and tear 1: Trim / covers: Door trim - rear right side - Scratch(es) - No deduction



Wear and tear 1: Trim / covers: Door trim - rear right side - Scratch(es) - No deduction



Wear and tear 2: Door - rear left side: Door - Scratch(es) - No deduction



Wear and tear 2: Door - rear left side: Door - Scratch(es) - No deduction



Repainting 1: Roof rail - right side



Repainting 2: Side panel - rear right side



Wartungshistorie

(gemäß Auftraggeber Informationen)

Fahrgestellnummer: WVWZZZCD6PW544185
Hersteller / Modell: VOLKSWAGEN VOLKSWAGEN Golf Variant 2.0 TDI 4Motion SCR
DSG Alltrack

Datum	KM-Stand	Beschreibung
19.02.2026	98.145	Batterie ern; Luftfiltereinsatz ern; Motoröl b. Wartung; Ölfilter ern; Ölwechsel; Systemtest/Eigendiagnose; Wartung Sonstiges
09.01.2026	94.580	Systemtest/Eigendiagnose
24.11.2025	91.100	Luftfiltereinsatz ern; Regelwartungsdienst; Wartung Sonstiges
06.06.2025	72.865	Bremsflüssigkeit; Bremsflüssigkeit ern; Getriebeöl ern/prüfen; Motoröl b. Wartung; Ölfilter ern; Ölwechsel; Ölwechsel - Hinterachse; Reparatur Sonstiges; Wartung Sonstiges
20.01.2025	60.224	Bremse Sonstiges; Bremsklötze hinten; Bremsklötze vorne; Bremsscheiben vorne; Regelwartungsdienst; Wartung Sonstiges
08.10.2024	50.076	Motoröl b. Wartung; Ölfilter ern; Ölwechsel; Wartung Sonstiges
11.04.2024	29.697	Regelwartungsdienst
07.03.2024	24.861	Motoröl b. Wartung; Ölfilter ern; Ölwechsel; Wartung Sonstiges