

Expertise

Protocol number: 46161280
Order No. / Reference: 26437526
Inspection date: 24 Jun 2026

Manufacturer: Citroën

Model: Jumpy e-Spacetourer XL (75 kWh) Feel

VIN: VF7VZZKXZPZ088528



Vehicle details

Manufacturer / Type / Model / Equipment

Citroën Jumpy e-Spacetourer XL (75 kWh) Feel

Vehicle Identification number	VF7VZZKXZPZ088528
Mileage (Read)	105,656 km
First registration	8 May 2024
Number of holders	1
Next periodical technical inspection	05/2027 (Report not on hand)

Power / Engine displacement	57 kw / 0 ccm
------------------------------------	---------------

Fuel type / Cylinder	Electric / 0
-----------------------------	--------------

Gearbox / Number of gears	Direct drive / 1
----------------------------------	------------------

Type of drive	Front drive
----------------------	-------------

Type of vehicle	Van
------------------------	-----

Colour / colour code	Eis-Weiß
-----------------------------	----------

Doors / Seats	5 / 7
----------------------	-------

Upholstery type	Cloth
------------------------	-------

Colour of upholstery	Anthracite-Black
-----------------------------	------------------

Re-import	no
------------------	----

readiness to drive	Roadworthy
---------------------------	------------



Vehicle details

Maintenance booklet / proof	Non-existent	Next maintenance in	0 km
Key is / should be	1 / 2	FZG documents	ZB#2 (B) was available (copy), ZB#1 (S) was not available.
		Letter No.	HB974882
Previous damage / Accident	None detectable	Repainting	None detectable
Inspection conditions	sufficient	Lifting equipment / pit	yes
Test drive	Not performed	Engine function test	Performed
readiness to drive	Roadworthy		
Manufacturer key number/ type code number	3001 / BBW 00274		
Emission standard	2017/1151;WLTP;reine Elektrofz	fine dust sticker	
Permitted total weight	3,100 kg	Empty weight	

Tyres

Mounted tyres

#	Tyre size	Type of tyre	Manufacturer	Tread depth
1)	225/55 R17 101Y	All-season tyres on Steel rim with wheel cover	Pirelli	3mm / 3mm
2)	225/55 R17 101Y	All-season tyres on Steel rim with wheel cover	Pirelli	5mm / 5mm

Replacement

Typ	Tyre size	Type of tyre	Manufacturer	Tread depth
Tirefit		Expiration date 06/2028		

Legend: Tread depth information for the left tire is listed first, for the right tire it is listed second on the axle in the direction of travel.



Equipment

Standard equipment

- ABS and ESC
- Airbag: Side and head airbags in row 1
- Exterior mirrors, electrically adjustable, heated and foldable
- On-board computer
- CITROËN Connect Box: Emergency call and assistance system
- Windows: Side windows in rows 2 and 3, as well as the rear window, are more heavily tinted.
- Cruise control system with speed limiter
- Glazed tailgate, heated and with windshield wiper
- Charging unit: Onboard charger (vehicle-integrated charging unit), 3-phase (11 kW)
- LED daytime running lights
- Reading lamps (individually) in rows 2 and 3
- Engine guard (metal underdrive guard)
- Radio: RCC DAB audio system
- Tire pressure monitoring system
- Wheels: 17-inch steel rims with "Pentagon" wheel trims
- Power steering
- Front and rear bumpers painted in body color
- Doors: Sliding door on the right, manual
- Central locking with remote control
- Driver and passenger side airbags
- Airbag: Curtain airbags in rows 2 and 3
- Exterior mirror caps painted in Perla Nera black
- Hill start assist
- third brake light
- Color glass
- Rear parking aid, acoustic
- Electric front windows
- electric parking brake
- Transmission: 1-speed direct drive
- Paint finish: Solid color paint
- Charging cable: Mode 3 charging cable (11 kW, 3-phase), 6 meters long
- Steering wheel with height and reach adjustment
- light sensor
- Fog light
- Rain sensor
- Tire repair kit with puncture spray
- Side skirts painted in car color
- Sunshades with lighting
- Doors: Sliding door on the left, manual
- Immobiliser

Extra equipment

- All-season tyres
- Conversion for people with disabilities
- Package: Connect (CITROËN Connect NAV DAB incl. 17-cm / 7" touchscreen; Bluetooth; USB; Tri-Tuner; Mirror Screen; voice control - multifunction leather steering wheel - rear parking aid with reversing camera)
- Package: Safety (Active Emergency Brake with Collision Warning - Automatic Emergency Braking - Blind Spot Assist - Front Parking Aid with Acoustic Signals - Multifunction Steering Wheel - Lane Keeping Assist - Traffic Sign Recognition - Attention Assist - High Beam Assist)
- Package: Climate control (additional rear air conditioning - automatic climate control (2 zones) including heated rear window - 12V socket in row 2)
- Package: Comfort (Electric sliding doors right and left with opening sensor - Keyless system - Multifunction steering wheel - 12V socket in row 2)
- Seat: Heated front seats
- Seats: 6-seater in "Curitiba triton" fabric (Row 1: Driver's seat with armrest, height adjustable and double passenger seat with storage compartments; Row 2: Split bench seat (60/40), foldable and removable; Row 3: No seats)

Brief expert findings

Documents submitted	At the time of the inspection, the vehicle registration certificate Part 2 (title) was available, but the vehicle registration certificate Part 1 (document) was not. (Copy)
VIN comparison	The vehicle identification number (VIN) was read from the vehicle and its conformity with the submitted documents was confirmed by the undersigned during the inspection.
Inspection	The inspection conditions were sufficient for the assessment of the vehicle. Lifting equipment and/or a pit were available for examining the vehicle.
Test drive	No test drive/shunting maneuver was carried out during the inspection of the vehicle.
Engine function test	An engine test run was performed.
readiness to drive	The vehicle was roadworthy at the time of inspection.



Value reducing factors

No.	Component group	Description
1	Misc.	Inspection / maintenance - No evidence - No deduction
2	Wheel / tyres	Wheel cover - front right side - Broken / torn - Replace
3	Rear bumper	Rear bumper - Scratch(es) - Smart repair
4	Door - rear right side	Brightware - lower - Scratched - Smart repair
5	Rear bumper	Rear bumper (Abdeckung, Umbau, Be-Entladespuren) - Damaged - Loss in value
6	Wheel / tyres	Tyre - front - Worn - Replace
7	Misc.	Inspection / maintenance - Due - Perform
8	Boot lid / rear door	Boot lid - Deformed - Repair and paint

Wear and tear

No.	Component group	Description
1	Sliding door - left side	Sliding door - Stone chips - No deduction
2	Vehicle glazing	Windscreen - Stone chips - No deduction
3	Interior	Cargo space partition (Behindertentransportumbau) - Differs from the original configuration - No deduction

The vehicle shows signs of wear and tear commensurate with its age and use.

Order/Scope of Order

An order was placed to prepare a sales report for the described vehicle. This report includes the following:

- Description of key vehicle information
- Documentation of equipment features
(*Delivery by third-party service providers*)
- Documentation of damage, defects, missing parts
- Documentation of prior damage, unrepaired prior damage, repainting
- A brief visual or functional inspection of the equipment details, if possible.
(*Functional testing of driver assistance systems is not included in the scope of services!*)
- a photographic documentation of the vehicle

Basis for the order

This product is based on the guidelines for vehicle returns and valuations published by Alphabet Fleet GmbH. The expert makes the specific findings in each individual case objectively, within the framework of the prescribed standards, based on their own expertise.

The vehicle inspection takes place in a fully assembled, unassembled state.

Damage or defects that can only be detected during disassembly/diagnostic work or through further investigation remain within the realm of prognostic risk. An increased risk exists due to concealed defects caused by fraudulent misrepresentation and which were not identifiable by the expert.

Damage or defects resulting from normal use or wear and tear of the vehicle will be accepted in accordance with the applicable standard.

There was no explicit identification or monetary consideration of the expected features within the product.

Features which, in their nature and extent, slightly exceed normal use but do not constitute unacceptable damage, will be documented and indicated as signs of wear, if applicable.

Damage or defects that, according to the applicable standard, can no longer be attributed to normal use or wear and tear are listed under "Value Reducing Factors" in the product description.

Depending on the product specification, a monetary ID can be provided. If this takes place, the costs can be 100% d or pro rata depending on the vehicle's age and mileage.



Previous damages

No apparent prior damage that had been repaired could be found on the vehicle.

Comments

- Spezialtransportumbau



Figure 1: Diagonal front (left)



Figure 2: Diagonal front (right)



Figure 3: Diagonal rear (left)



Figure 4: Diagonal rear (right)



Figure 5: Interior - front



Figure 6: Interior - rear



Figure 7: Instrument cluster



Figure 8: Instrument panel



Figure 9: Interior 360° view



Figure 10: Cargo area

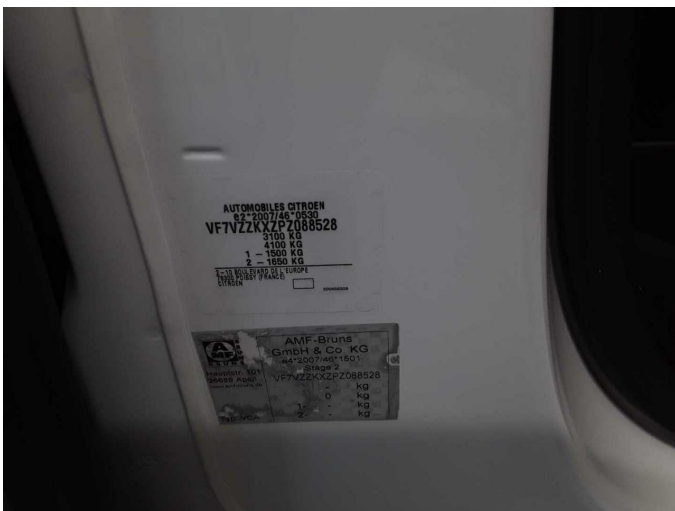


Figure 11: VIN



Figure 12: Mounted tyres



Figure 13: Documents



Figure 14: Navigation

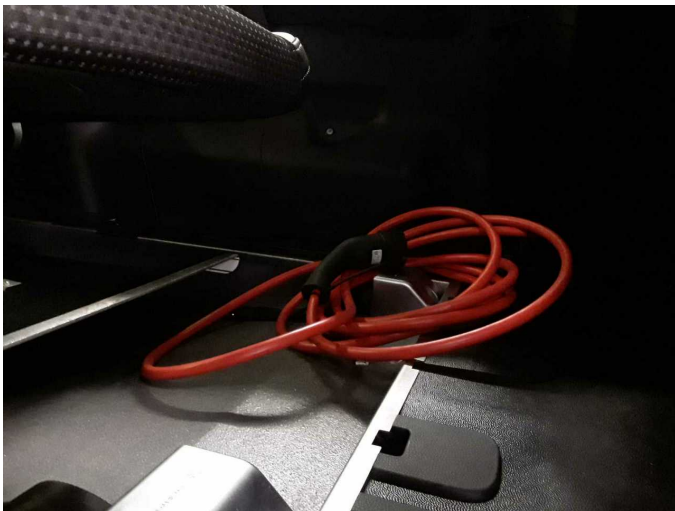


Figure 15: Misc.



Figure 16: Misc.

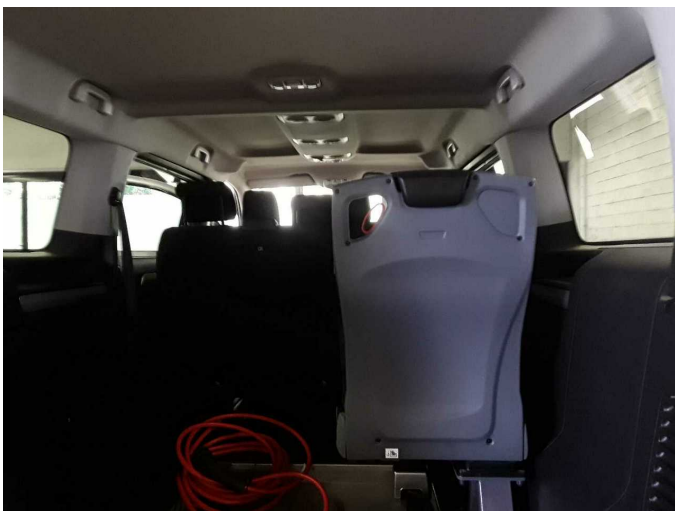


Figure 17: Misc.



Figure 18: Misc.



Figure 19: Misc.



Figure 20: Misc.



Figure 21: Misc.



Figure 22: Misc.

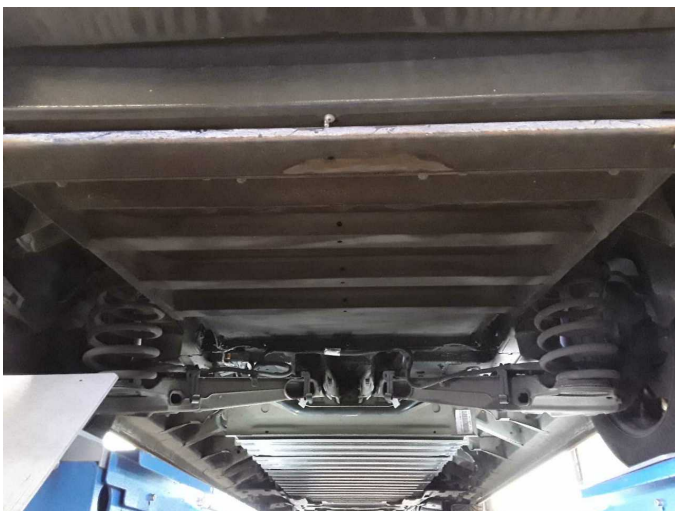


Figure 23: Misc.



Figure 24: Misc.



Figure 25: Misc.



Figure 26: Misc.



Figure 27: Misc.



Figure 28: Misc.



Figure 29: Misc.



Damage 2: Wheel / tyres: Wheel cover - front right side - Broken / torn - Replace



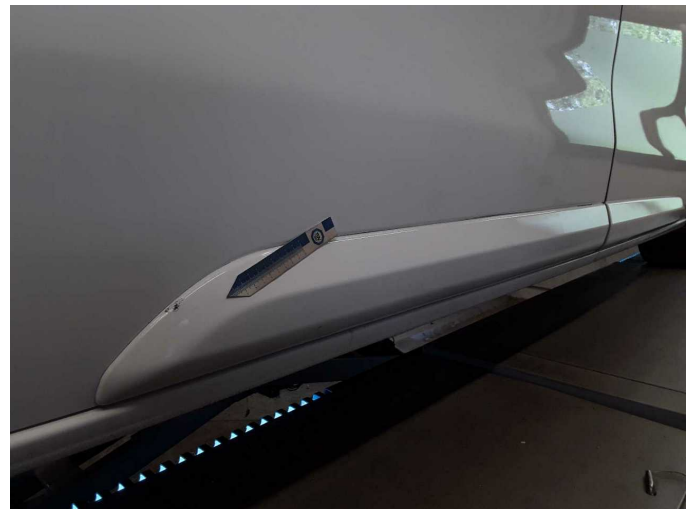
Damage 2: Wheel / tyres: Wheel cover - front right side - Broken / torn - Replace



Damage 3: Rear bumper: Rear bumper - Scratch(es) - Smart repair



Damage 3: Rear bumper: Rear bumper - Scratch(es) - Smart repair



Damage 4: Door - rear right side: Brightware - lower - Scratched - Smart repair



Damage 4: Door - rear right side: Brightware - lower - Scratched - Smart repair



Damage 5: Rear bumper: Rear bumper (Abdeckung, Umbau, Be-Entladespuren) - Damaged - Loss in value



Damage 5: Rear bumper: Rear bumper (Abdeckung, Umbau, Be-Entladespuren) - Damaged - Loss in value



Damage 6: Wheel / tyres: Tyre - front - Worn - Replace



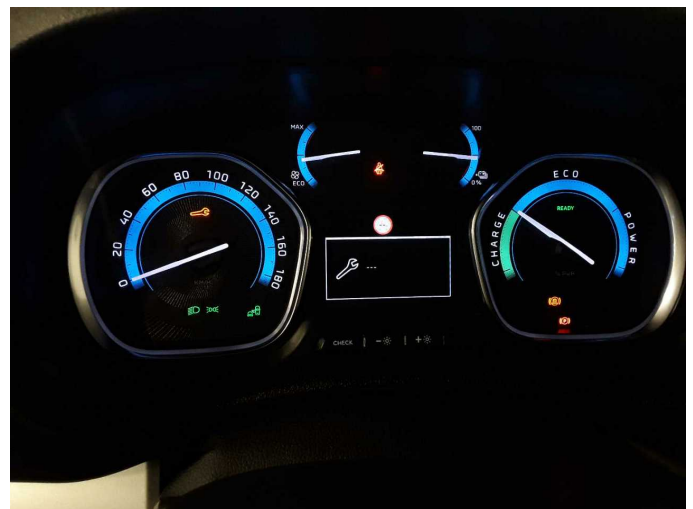
Damage 6: Wheel / tyres: Tyre - front - Worn - Replace



Damage 6: Wheel / tyres: Tyre - front - Worn - Replace



Damage 6: Wheel / tyres: Tyre - front - Worn - Replace



Damage 7: Misc.: Inspection / maintenance - Due - Perform



Damage 8: Boot lid / rear door: Boot lid - Deformed - Repair and paint



Damage 8: Boot lid / rear door: Boot lid - Deformed - Repair and paint



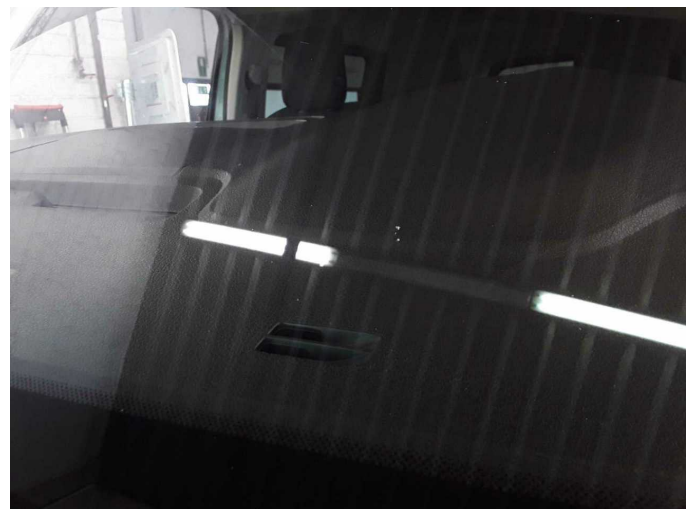
Wear and tear 1: Sliding door - left side: Sliding door - Stone chips - No deduction



Wear and tear 1: Sliding door - left side: Sliding door - Stone chips - No deduction



Wear and tear 2: Vehicle glazing: Windscreen - Stone chips - No deduction



Wear and tear 2: Vehicle glazing: Windscreen - Stone chips - No deduction