

Expertise

Protocol number: 46193319
Order No. / Reference: 25933671
Inspection date: 27 May 2026

Manufacturer: Mercedes-Benz

Model: Vito 116 CDI Lang HA PRO

VIN: W1VVLBEZ7T4565206



Vehicle details

Manufacturer / Type / Model / Equipment

Mercedes-Benz Vito 116 CDI Lang HA PRO

Vehicle Identification number W1VVLBEZ7T4565206

Mileage (Read) 4,720 km

First registration 8 Sept 2025

Number of holders 1

Power / Engine displacement 120 kw / 1,950 ccm

Fuel type / Cylinder Diesel / 4

Gearbox / Number of gears Manual / 6

Type of drive Rear drive

Type of vehicle Van

Colour / colour code Aktisweiß

Doors / Seats 4 / 3

Upholstery type Cloth

Colour of upholstery Black-Grey

Type of use rental car



Vehicle details

Maintenance booklet / proof	digital proof / complete	Next maintenance in	369 Tag(e)
Key is / should be	2 / 2	FZG documents	ZB#2 (B) was available (copy), ZB#1 (S) was not available.
		Letter No.	HN441624
Previous damage / Accident	None detectable	Repainting	None detectable
Inspection conditions	sufficient	Lifting equipment / pit	yes
Test drive	Not performed	Engine function test	Performed
Manufacturer key number/ type code number	2222 / BBJ 11527		
Emission standard	EURO6;WLTP;EB;PI/CI;M, N1, N2	fine dust sticker	
Permitted total weight	2,800 kg	Empty weight	

Tyres

Mounted tyres

#	Tyre size	Type of tyre	Manufacturer	Tread depth
1)	225/55 R17 107H	All-season tyres on Steel rim with wheel cover	Goodyear	6mm / 6mm
2)	225/55 R17 107H	All-season tyres on Steel rim with wheel cover	Goodyear	7mm / 7mm

Legend: Tread depth information for the left tire is listed first, for the right tire it is listed second on the axle in the direction of travel.

TÜV SÜD Auto Partner GmbH
Gutenbergstraße 13
70771 Leinfelden-Echterdingen

Inspection location
ARS Altmann AG Automobillogistik
Lilienthalstraße 2
29693 Hodenhagen



Equipment



Standard equipment

- Screw-in towing eye front/rear
- Passenger side airbag
- Towing capacity 0 kg/lbs
- Electrically adjustable and heated exterior mirrors, left and right
- Outdoor temperature display
- Battery: fleece battery 12 V / 92 Ah
- Hill start assist
- third brake light
- COC documents
- Diesel particulate filter
- Electrical components for trailer socket (electrical lines for power supply of the trailer - without trailer hitch control unit)
- Driving light assistant (automatically switching on driving lights)
- Chassis: Standard chassis
- Parking brake
- Generator 14 V / 250 A
- Speed limit 210 km/h
- Transmission: 6-speed manual transmission TSG 380
- Weight variant 2,800 kg
- Seatbelt warning device for front passenger seat
- Seatbelt warning device for driver's seat
- Lockable glove box
- Rear camera not foldable
- Boot lid
- Interior trim of cargo area, side
- Tempmatic controlled air conditioning
- Comfort closing (comfort opening and closing of windows)
- Headrests (2), front
- Paint finish: Solid color paint
- Steering wheel: Multifunction steering wheel
- Mercedes-Benz emergency call system (communication module (LTE) for digital services breakdown management)
- Breakdown management
- Radio: Digital Radio DAB
- Full wheel cover
- Tires: Tires without specified make
- Wheels: Premium complete wheel protection (3 years)
- Wheels: Steel rims 6.5 J x 17
- Electric suction fan, power level 5
- Sliding door on the right, cargo/passenger compartment
- Crosswind Assist
- Seat: Lumbar support, passenger seat
- Seats: Driver's seat Plus with flat seat surface (with Rawson Plus fabric)
- Seats: Passenger seat cushion depth adjustment
- Lane Keeping Assist active
- 12V socket
- Blind Spot Assist
- Updates to the intelligent speed assistant
- Pre-installation for Remote Services Plus
- Axle ratio i = 3.267
- Driver's side airbag
- ATTENTION ASSIST (ATTENTION ASSIST can assist the driver on long, monotonous journeys by monitoring attention. If signs of fatigue or increasing inattention are detected, it suggests a break.)
- Fixing points in the roof frame
- Brake assist, active
- Brake lights, adaptive
- Front cupholder
- Electronic tachometer
- Electronic Stability Program (ADAPTIVE ESP) with integrated anti-lock braking system (ABS) (traction control (ASR) - electronic brake force distribution (EBD) - brake assist (BAS))
- Electric window regulator driver/passenger (with anti-pinch protection, quick lowering and raising)
- Generator management (Generator management helps reduce fuel consumption and CO2 emissions. The generator is switched off and the vehicle's electrical system is powered by the battery when it is sufficiently charged. This relieves the engine of the burden of charging the battery, for example, during acceleration. - When braking and during coasting downhill, the generator is switched on and the vehicle's kinetic energy is recuperated to charge the battery.)
- Intelligent speed assistant
- Instrument cluster with color display
- Communication module (LTE) for digital services
- Large fuel tank, approx. 70 liters
- Steering wheel adjustable for tilt and height
- Headlight range control
- Navigation: Navigation pre-installation
- Package: BlueEFFICIENCY (Efficiency Package)
- Upholstery: Caluma fabric, black
- Radio: MBUX multimedia system
- Tires: 225/55R17
- Tire pressure monitoring (on front and rear axles (wireless))
- High-resolution reversing camera with guide lines
- Headlights: halogen technology
- Key: Multi-button remote control
- electromechanical power steering
- Seat: Lumbar support driver's seat
- Seats: Comfort passenger seat
- Seats: Comfort driver's seat
- Seats: Driver's seat cushion depth adjustment
- Start-stop function
- Cruise control
- continuous partition wall
- First aid kit
- Warning triangle
- Immobiliser
- Central locking with radio remote control



- ASSYST maintenance interval indicator
- Heat-insulating glass all around
- Registration as a truck

Extra equipment

- | | |
|---|---|
| <ul style="list-style-type: none"> • Airbag: Thorax airbag - Pelvis side airbag for front passenger • Comfort roof control unit • Interior trim of cargo area, upper panels • Multibeam LED with High Beam Assist PLUS • Navigation • Tires: All-season tires • Weld nuts side wall for extensions • Traffic Sign Assistant | <ul style="list-style-type: none"> • Airbag: Thorax-pelvis-sidebag for driver • Towbar (fixed ball head) • Wooden floor (cargo area) • LED light strip in the cargo area • Night lighting rear • Navigation accessories: Live Traffic Information • Rear door, double-leaf, 180° opening, without window • Seats: Passenger seat, two-seater • Lashing rails on side wall to parapet strap |
|---|---|

Brief expert findings

Documents submitted	At the time of the inspection, the vehicle registration certificate Part 2 (title) was available, but the vehicle registration certificate Part 1 (document) was not. (Copy)
VIN comparison	The vehicle identification number (VIN) was read from the vehicle and its conformity with the submitted documents was confirmed by the undersigned during the inspection.
Inspection	The inspection conditions were sufficient for the assessment of the vehicle. Lifting equipment and/or a pit were available for examining the vehicle.
Test drive	No test drive/shunting maneuver was carried out during the inspection of the vehicle.
Engine function test	An engine test run was performed.

Value reducing factors

No.	Component group	Description
1	Misc.	Main inspection - No evidence - No deduction
2	Seat - front	Seat - Soiled - Clean
3	Sliding door, right	Sliding door - dent(s) - Smooth repair work
4	Sliding door, right	Door seal - Broken / torn - Replace
5	Front bumper	Front bumper - Scratched - Replace

Wear and tear

No.	Component group	Description
1	Body	Underbody panelling - Scratch(es) - No deduction
2	Door - front right side	Door edge - Scratch(es) - No deduction
3	Wing mirror - left side	Mirror housing - Scratch(es) - No deduction
4	Boot lid / rear door	Rear door - left side - Scratch(es) - No deduction
5	Boot lid / rear door	Rear door - right side - Scratch(es) - No deduction
6	Rear bumper	Rear bumper (unpainted) - Scratch(es) - No deduction
7	Door - front right side	Door - dent(s) - No deduction

The vehicle shows signs of wear and tear commensurate with its age and use.



Paint coat thickness measurement

Roof	102 µm	Roof rail - left side	107 µm
Roof rail - right side	96 µm	Boot lid / rear door	95 µm
Mudguard - left side	96 µm	Mudguard - right side	98 µm
Bonnet	97 µm	Side panel - rear left side	98 µm
Side panel - rear right side	91 µm	Door - rear left side	105 µm
Door - rear right side	100 µm	Door - front left side	98 µm
Door - front right side	100 µm		

Order/Scope of Order

An order was placed to prepare a sales report for the described vehicle. This report includes the following:

- Description of key vehicle information
- Documentation of equipment features
(Delivery by third-party service providers)
- Documentation of damage, defects, missing parts
- Documentation of prior damage, unrepaired prior damage, repainting
- A brief visual or functional inspection of the equipment details, if possible.
(Functional testing of driver assistance systems is not included in the scope of services!)
- a photographic documentation of the vehicle

Basis for the order

This product is based on the guidelines for vehicle returns and valuations of light commercial vehicles published by Alphabet Fleet Management GmbH. The expert makes the specific findings in each individual case objectively, within the framework of the prescribed standards, based on their own expertise.

The vehicle inspection takes place in a fully assembled, unassembled state.

Damage or defects that can only be detected during disassembly/diagnostic work or through further investigation remain within the realm of prognostic risk. An increased risk exists due to concealed defects caused by fraudulent misrepresentation and which were not identifiable by the expert.

Damage or defects resulting from normal use or wear and tear of the vehicle will be accepted in accordance with the applicable standard.

There was no explicit identification or monetary consideration of the expected features within the product.

Features which, in their nature and extent, slightly exceed normal use but do not constitute unacceptable damage, will be documented and indicated as signs of wear, if applicable.

Damage or defects that, according to the applicable standard, can no longer be attributed to normal use or wear and tear are listed under "Value Reducing Factors" in the product description.

Depending on the product specification, a monetary ID can be provided. If this takes place, the costs can be 100% d or pro rata depending on the vehicle's age and mileage.

Previous damages

No apparent prior damage that had been repaired could be found on the vehicle.

Comments

- Das Fahrzeug weist die fahrzeug- und nutzungsbedingt transsportertypischen Gebrauchsspuren auf.



Figure 1: Diagonal front (left)



Figure 2: Diagonal front (right)



Figure 3: Diagonal rear (left)



Figure 4: Diagonal rear (right)



Figure 5: Interior - front



Figure 6: Interior - rear



Figure 7: Instrument cluster



Figure 8: Instrument panel



Figure 9: Interior 360° view

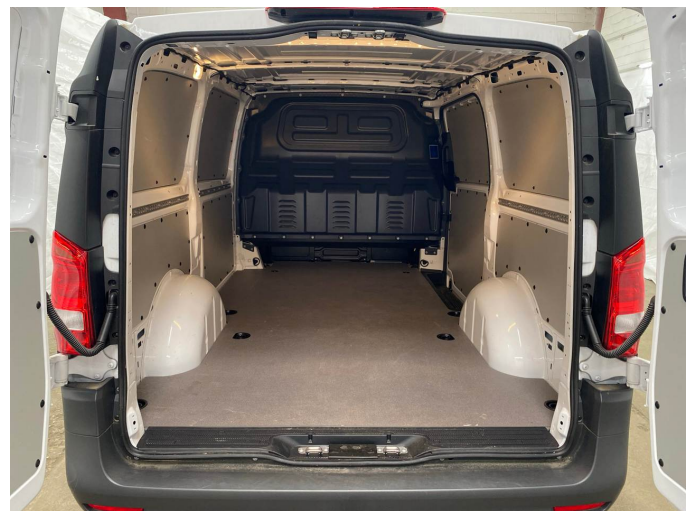


Figure 10: Cargo area



Figure 11: VIN



Figure 12: Mounted tyres



Figure 13: Documents



Figure 14: Navigation



Figure 15: Misc.



Figure 16: Misc.

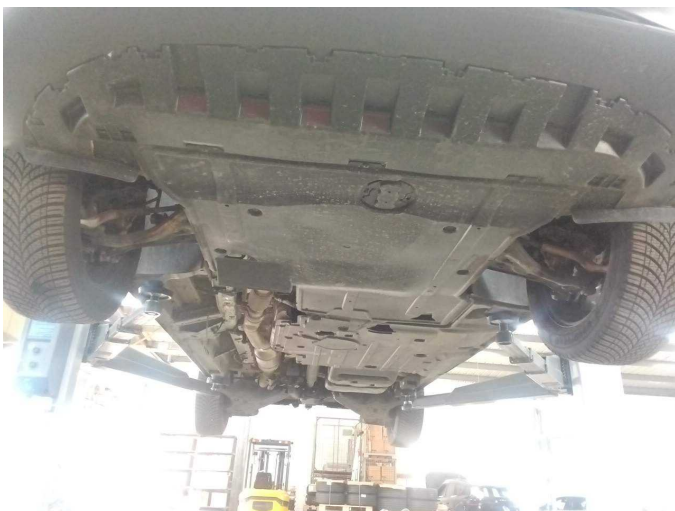


Figure 17: Misc.

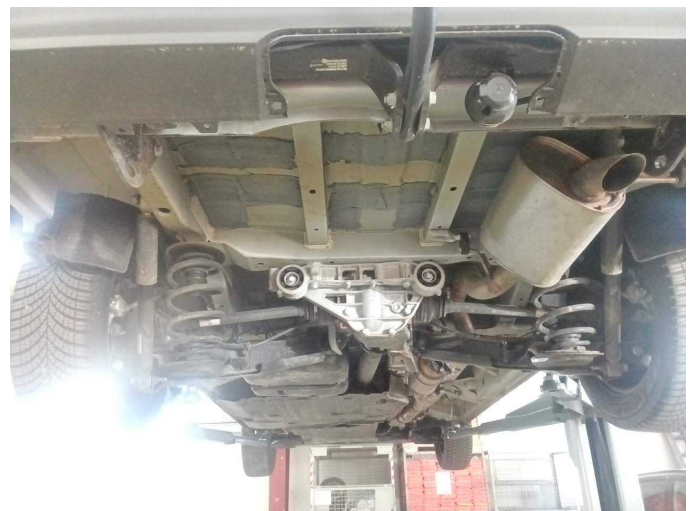


Figure 18: Misc.



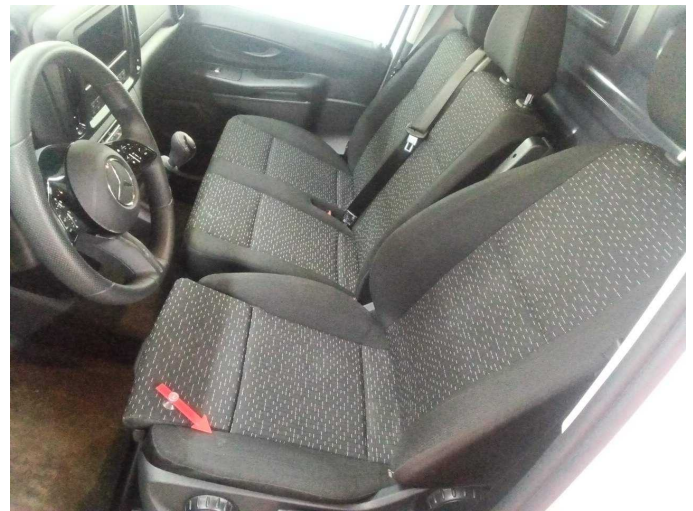
Figure 19: Misc.



Figure 20: Misc.



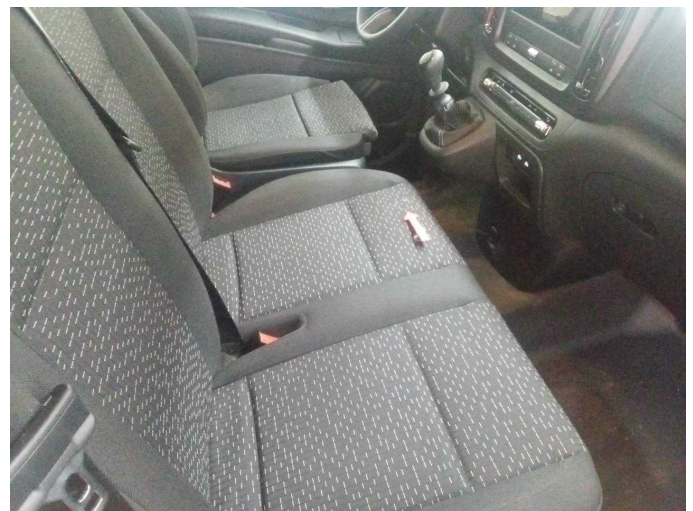
Figure 21: Misc.



Damage 2: Seat - front: Seat - Soiled - Clean



Damage 2: Seat - front: Seat - Soiled - Clean



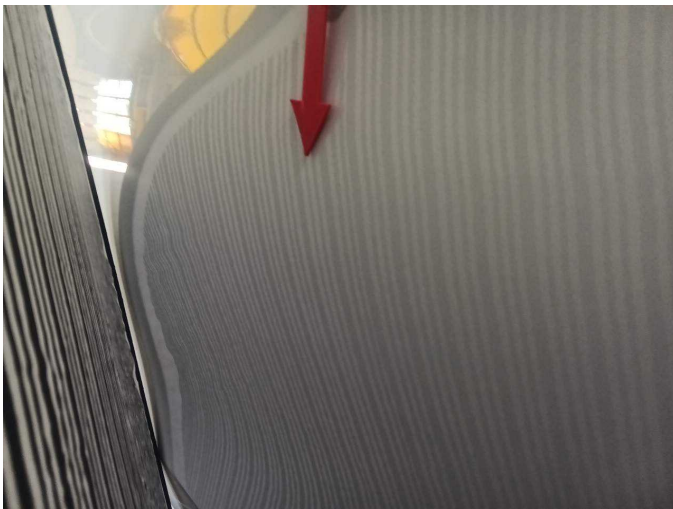
Damage 2: Seat - front: Seat - Soiled - Clean



Damage 2: Seat - front: Seat - Soiled - Clean



Damage 3: Sliding door, right: Sliding door - dent(s) - Smooth repair work



Damage 3: Sliding door, right: Sliding door - dent(s) - Smooth repair work



Damage 4: Sliding door, right: Door seal - Broken / torn - Replace



Damage 4: Sliding door, right: Door seal - Broken / torn - Replace



Damage 5: Front bumper: Front bumper - Scratched - Replace



Damage 5: Front bumper: Front bumper - Scratched - Replace



Damage 5: Front bumper: Front bumper - Scratched - Replace